

PROJECT NAME AND LOCATION:

**NEW SNOW REMOVAL  
EQUIPMENT BUILDING**  
VERMONT AGENCY OF TRANSPORTATION  
CLARENDON, VERMONT

REVISIONS

NO.	DESCRIPTION	DATE

UNAUTHORIZED ALTERATION OF THIS DOCUMENT IS PROHIBITED BY NEW YORK STATE EDUCATION DEPARTMENT LAW ARTICLE 145.

DATE: 06/29/2006

DRAWN BY: MDC

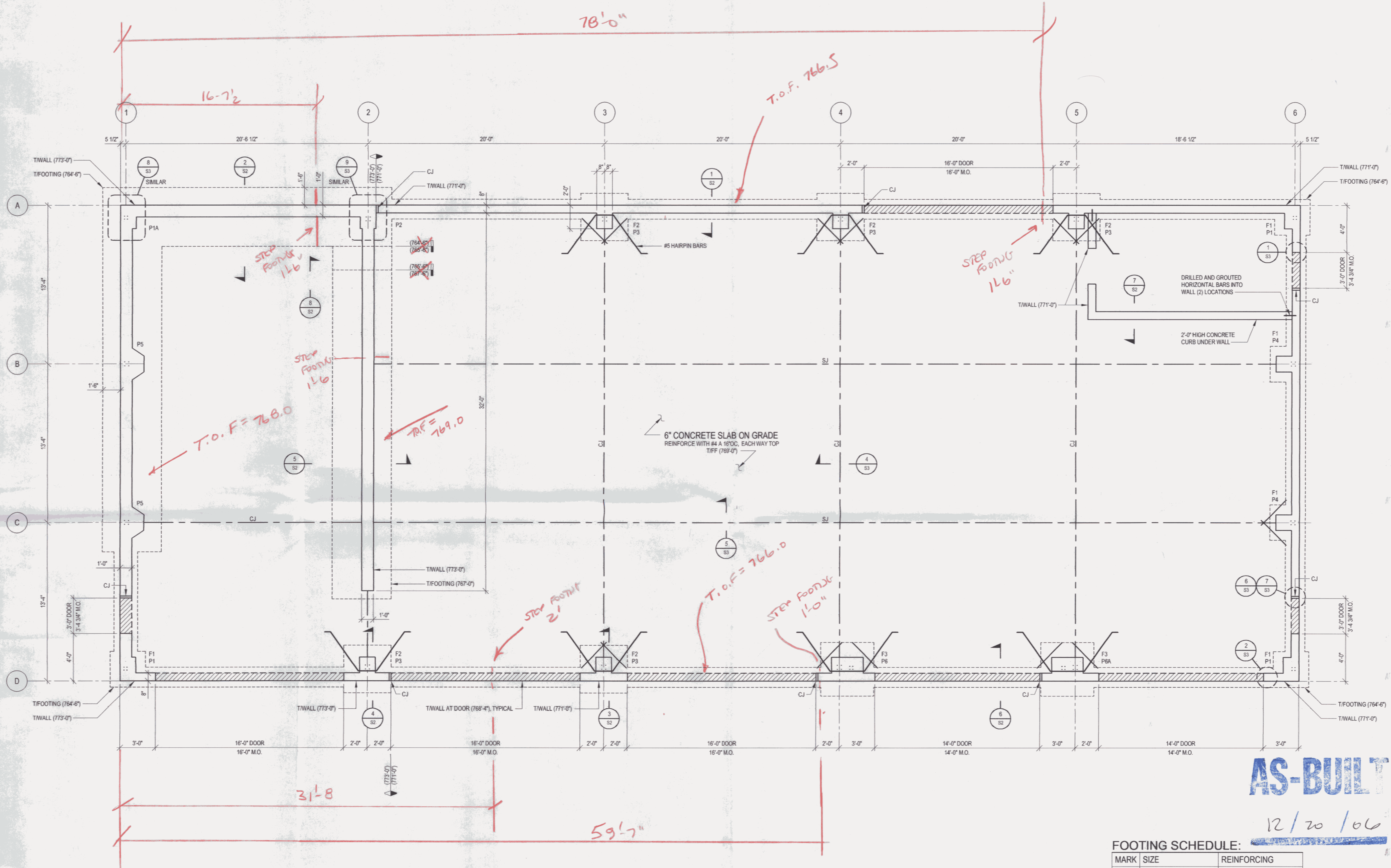
CHECKED BY: SJS

SHEET TITLE:

**FOUNDATION PLAN**

SHEET NUMBER:

**S1**



**AS-BUILT**

12/20/06

FOOTING SCHEDULE:

MARK	SIZE	REINFORCING
F1	3'-0" x 3'-0" x 1'-0"	(4) #5 EACH WAY BOTTOM
F2	4'-0" x 4'-0" x 1'-0"	(5) #5 EACH WAY BOTTOM
F3	4'-6" x 4'-6" x 1'-0"	(6) #5 EACH WAY BOTTOM

PLAN: FOUNDATION

1/4" = 1'-0"

NOTES:

- CJ - INDICATES CONSTRUCTION JOINT WITH DOWELS
- SJ - INDICATES CONTRACTION JOINT - STOP BARS EACH SIDE
- (LOW SIDE) - INDICATES FOOTING STEP.  
(HIGH SIDE) - INDICATES WALL STEP.
- (LOW SIDE) - INDICATES WALL STEP.  
(HIGH SIDE) - INDICATES WALL STEP.
- F# - INDICATES FOOTING TYPE. SEE FOOTING SCHEDULE.
- P# - INDICATES PIER TYPE. SEE DRAWING S4 FOR PIER DETAILS.

FOOTING STEPS ARE AS INDICATED DUE TO LEDGE THAT WAS ENCOUNTERED.

RECEIVED

JUN 30 2006

THE QUINN COMPANY