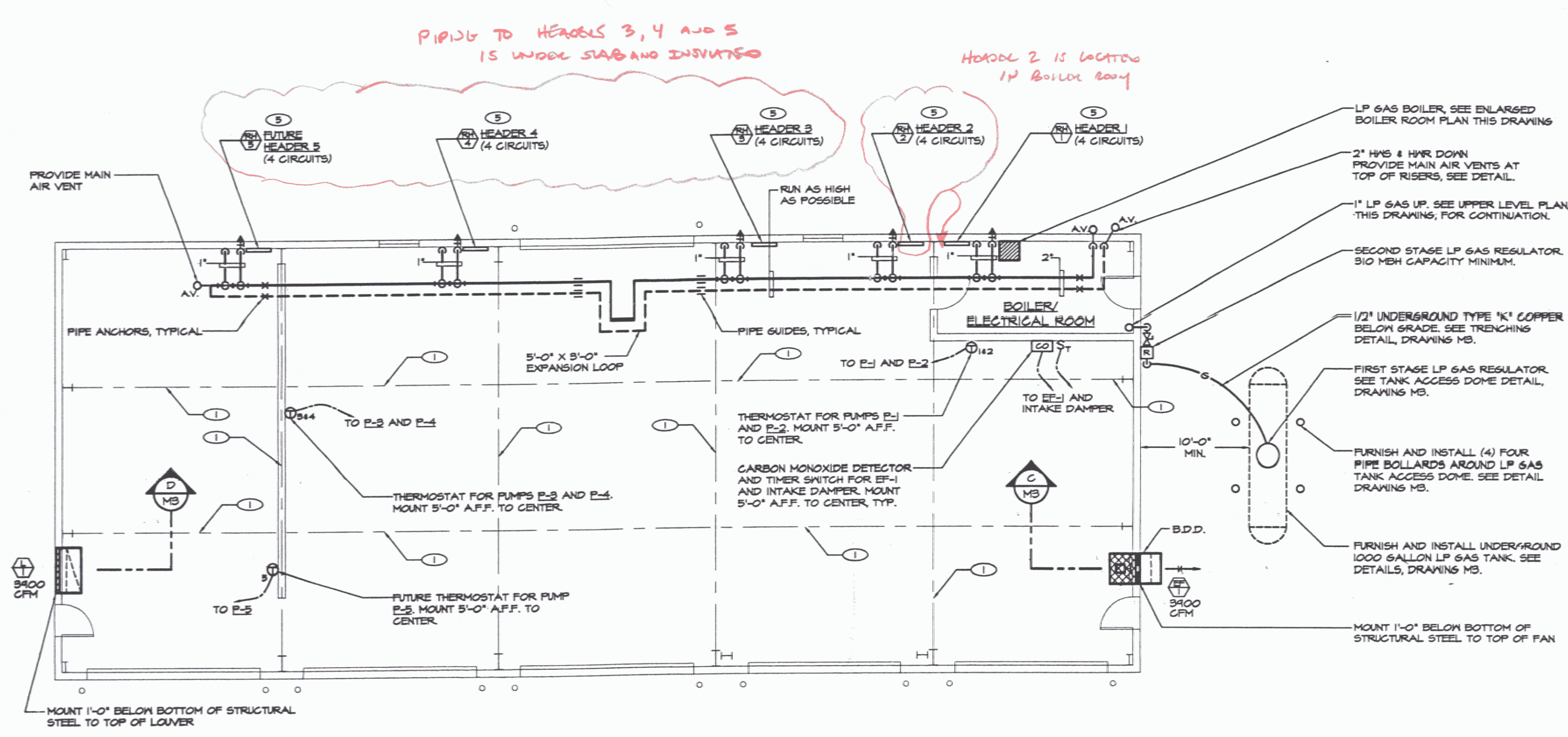


FLOOR PLAN - RADIANT TUBING
SCALE: 1/8"=1'-0"



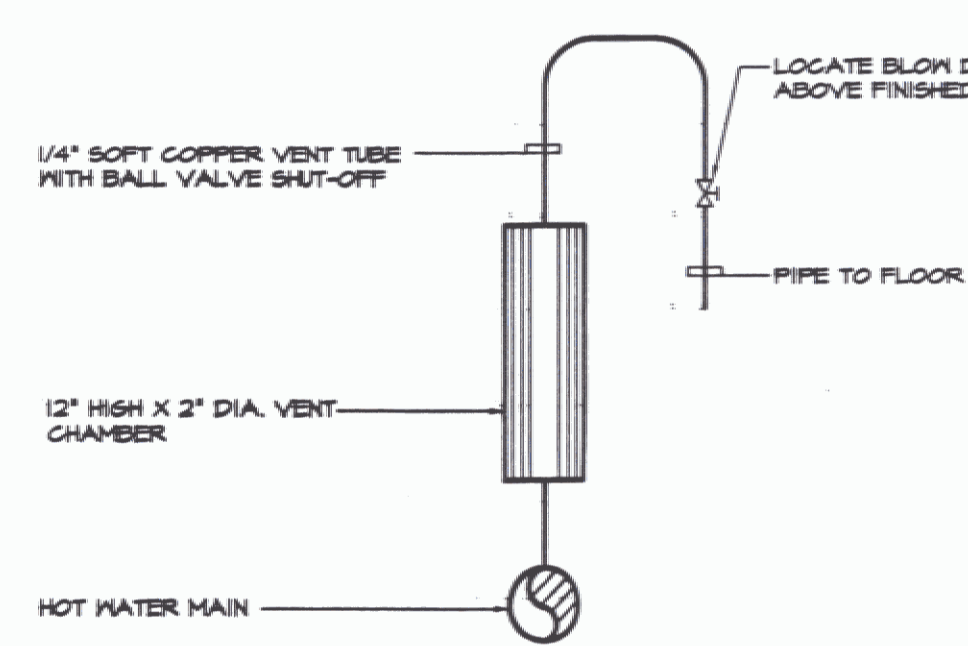
FLOOR PLAN - HEATING PIPING AND VENTILATION
SCALE: 1/8"=1'-0"

RADIANT TUBING NOTES:

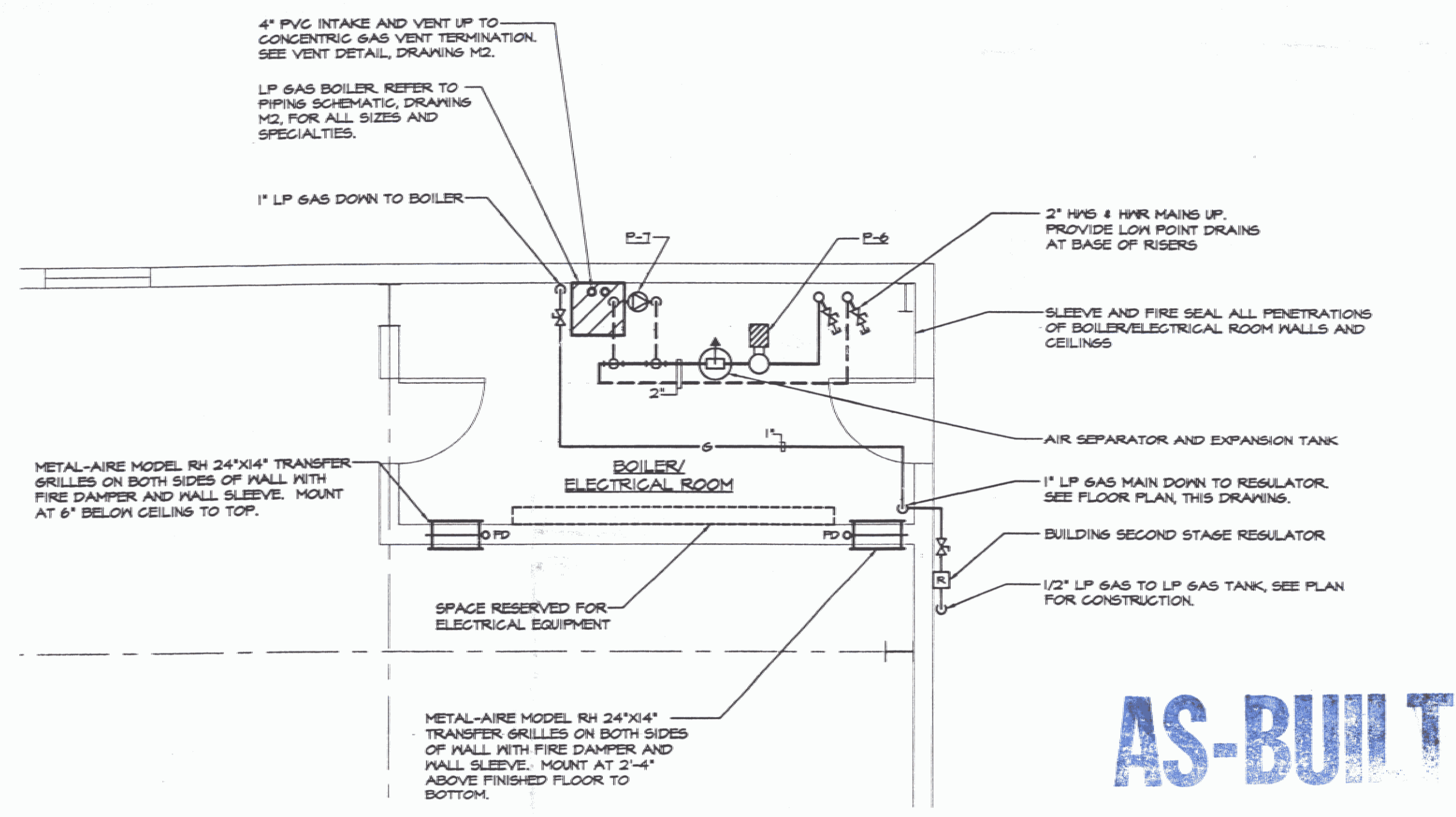
- 1) THE INSTALLING CONTRACTOR SHALL INSTALL ALL TUBING BELOW REINFORCING, DIRECTLY TO RIGID INSULATION BOARD IN ACCORDANCE WITH THE MANUFACTURER'S PUBLISHED INSTALLATION MANUAL.
- 2) NO TUBING JOINTS ARE PERMITTED BELOW SLAB.
- 3) LOCATIONS OF STRUCTURAL CONTROL JOINTS AND COLLINGS ARE INDICATED ON THIS DRAWING FOR COORDINATION AND DESIGN PURPOSES. OBTAIN A FINAL APPROVED SET OF STRUCTURAL DRAWINGS TO LOCATE ALL FINAL STRUCTURAL ITEMS PRIOR TO INSTALLING TUBING.

DRAWING NOTES: (APPLY TO THIS DRAWING ONLY)

- 1) SLAB CONTROL JOINT, TYPICAL.
- 2) PROVIDE 1'-0" LONG ARMAFLEX INSULATION CENTERED ON ALL CONTROL JOINTS. SEE STRUCTURAL DRAWINGS FOR EXACT LOCATIONS OF CONTROL JOINTS.
- 3) 1/2" I.D. PEX TUBING, TYPICAL FOR ALL CIRCUITS. TUBING SPACING SHALL BE 1'-0" UNLESS OTHERWISE SPECIFIED.
- 4) TUBING IN FRONT OF DOORS SHALL BE 6" O.C. SEE SECTION A-M2.
- 5) MOUNT HEADER MINIMUM 10'-0" ABOVE FINISHED FLOOR TO CENTER.
- 6) PROVIDE 14 GAUGE GALVANIZED ENCLOSURE AROUND ALL PEX TUBING FROM FLOOR TO HEADERS. SEE DETAIL B-M2.



MAIN AIR VENT DETAIL
NOT TO SCALE



ENLARGED BOILER/ELECTRICAL ROOM FLOOR PLAN
SCALE: 1/4"=1'-0"

AS-BUILT

12 / 20 / 06

	BIDDING	04/15/2006
NO.	ISSUED FOR	DATE

LANE ASSOCIATES
CONSULTING ENGINEERS, P.C.

HEATING, VENTILATION, & AIR CONDITIONING, PLUMBING, FIRE PROTECTION, & ELECTRICAL

CHARLES F. LANE, P.E.
DANIEL W. DUPRAS, P.E.

51 KILLINGTON AVENUE,
RUTLAND, VERMONT 05701
TELEPHONE: (802)747-3346
FAX/MODEM: (802)747-3356

FLOOR PLANS - HEATING AND VENTILATION

NEW SNOW REMOVAL EQUIPMENT BUILDING
VERMONT AGENCY OF TRANSPORTATION
CLARENDON, VERMONT

M
1