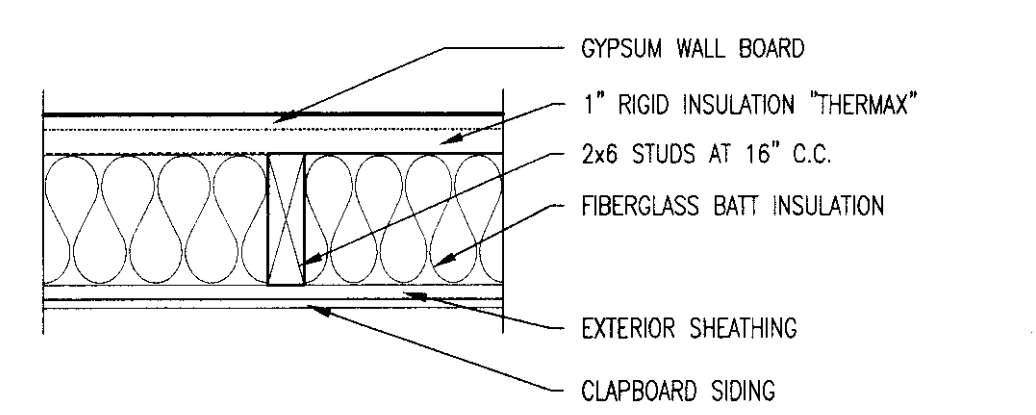
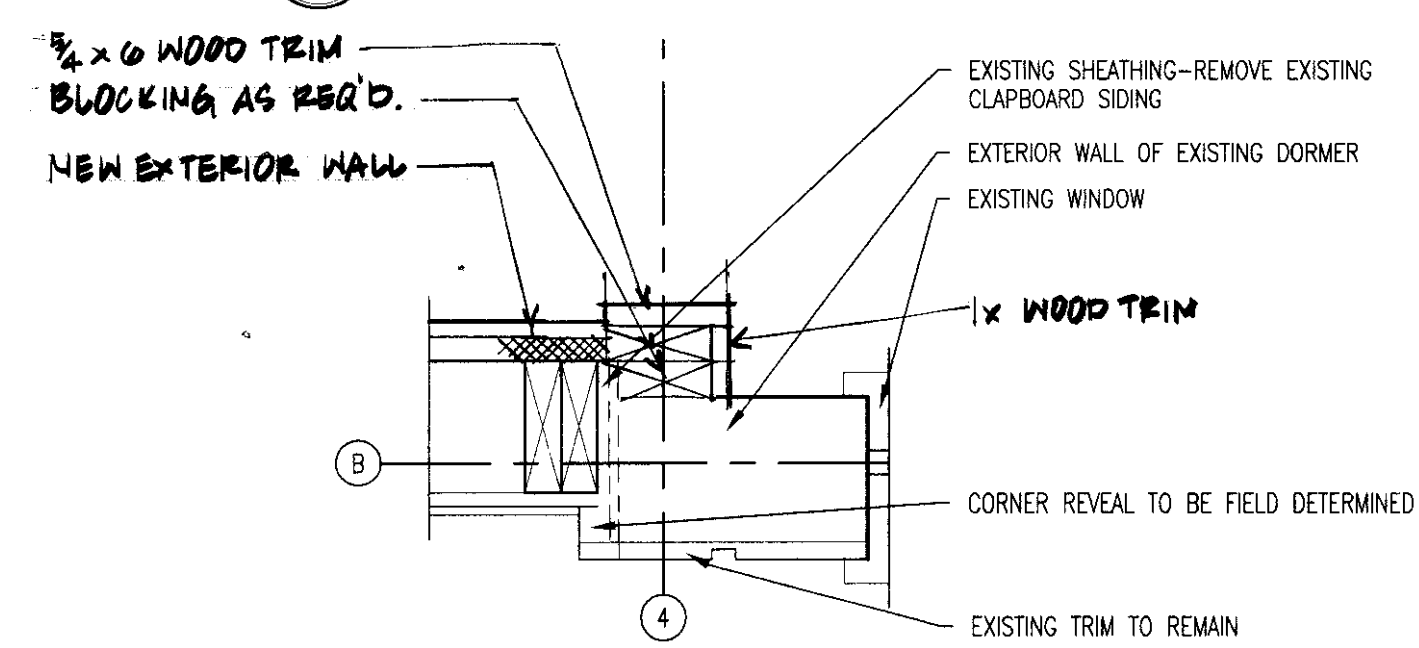


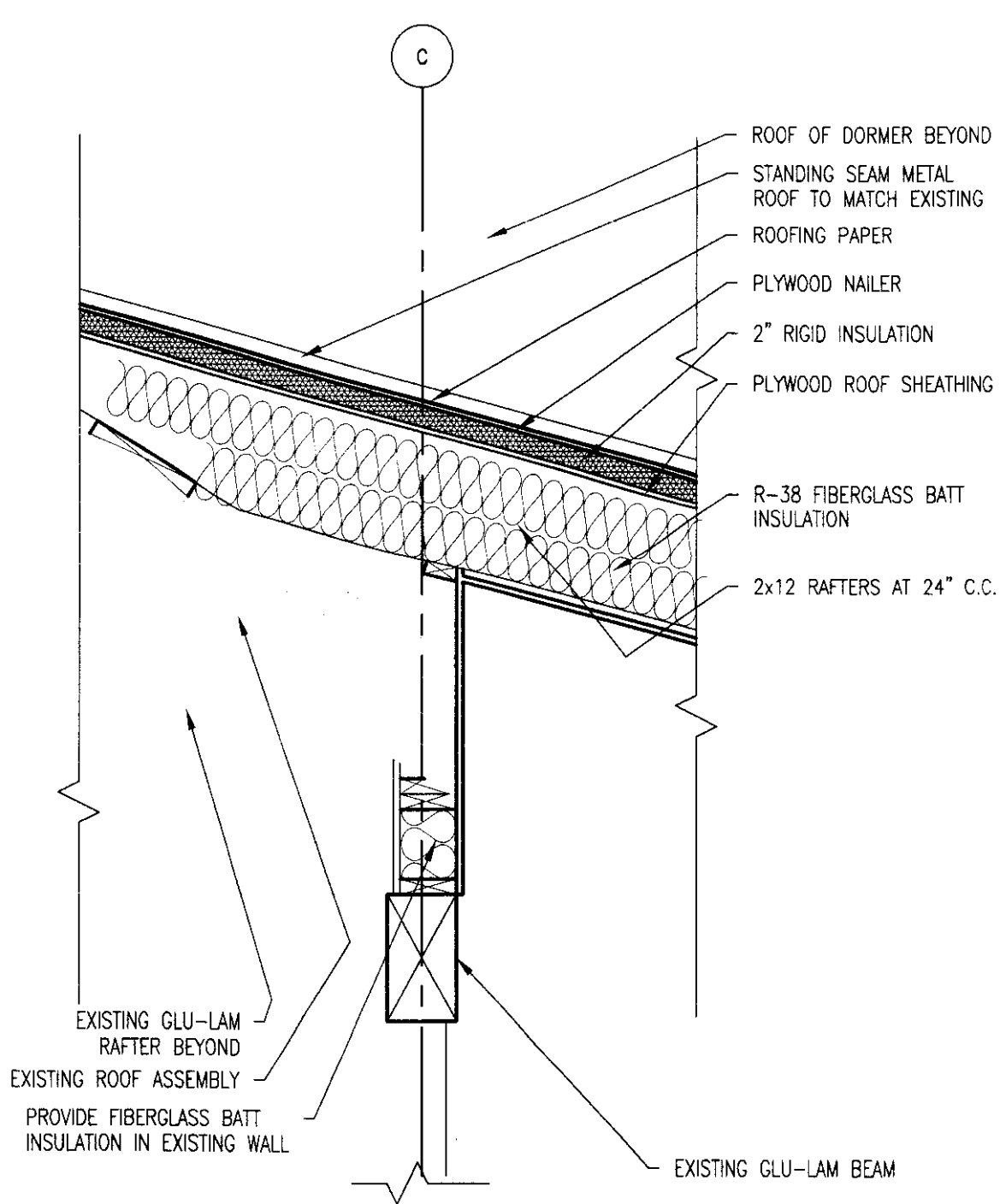
1 WALL SECTION AT WINDOW
SCALE: 3/4" = 1'-0"



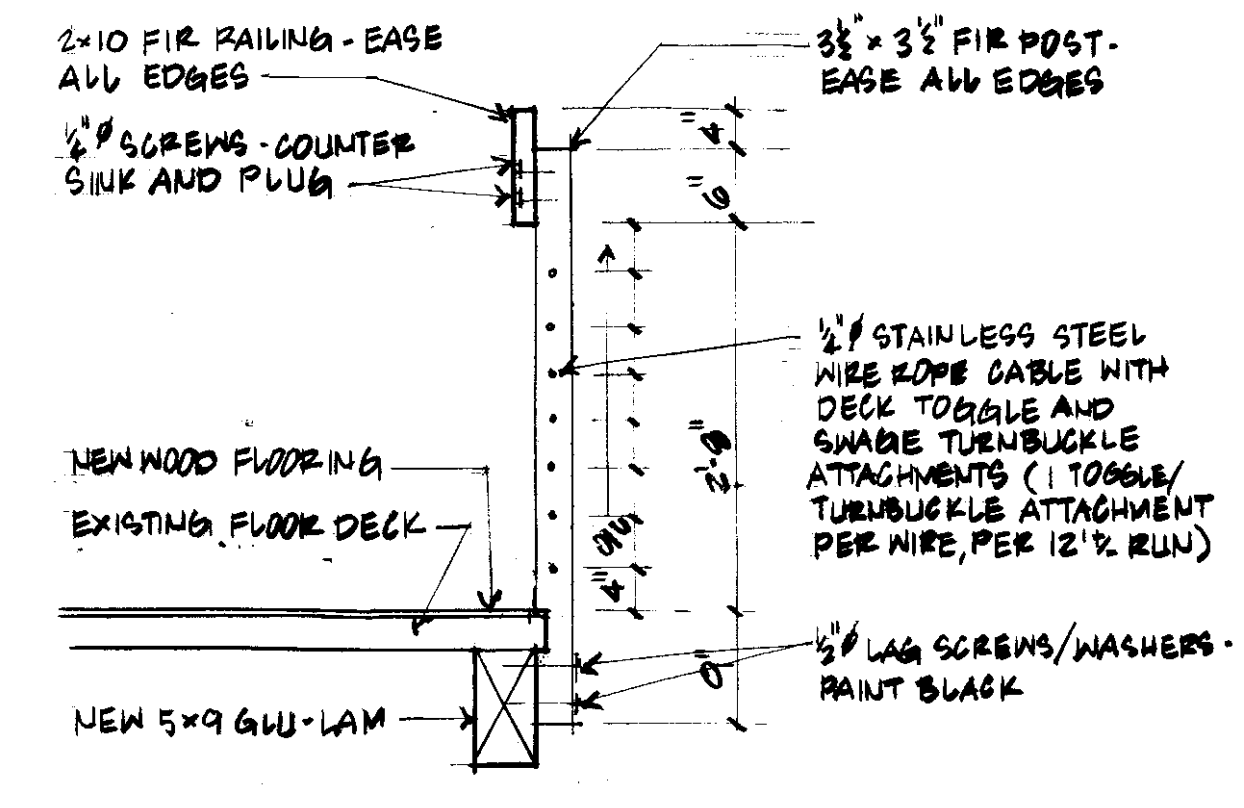
6 NEW EXTERIOR WALL
SCALE: 1 1/2" = 1'-0"



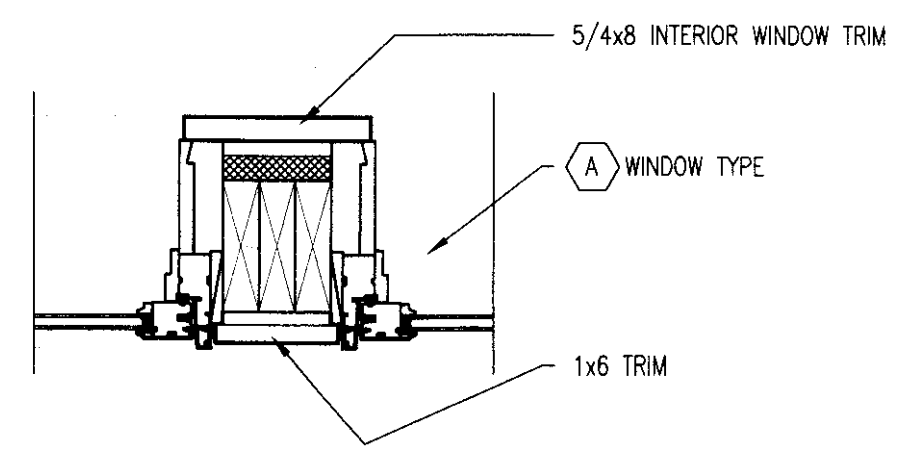
7 CORNER DETAIL - NEW DORMER
SCALE: 1 1/2" = 1'-0"



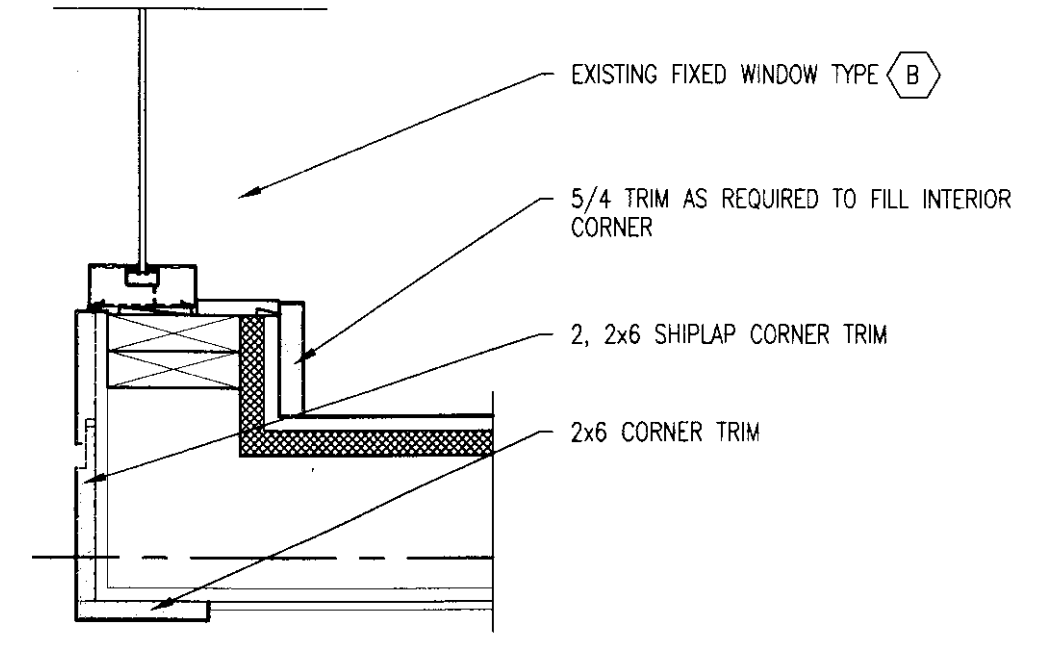
2 DETAIL AT EXISTING ROOF BEAM
SCALE: 3/4" = 1'-0"



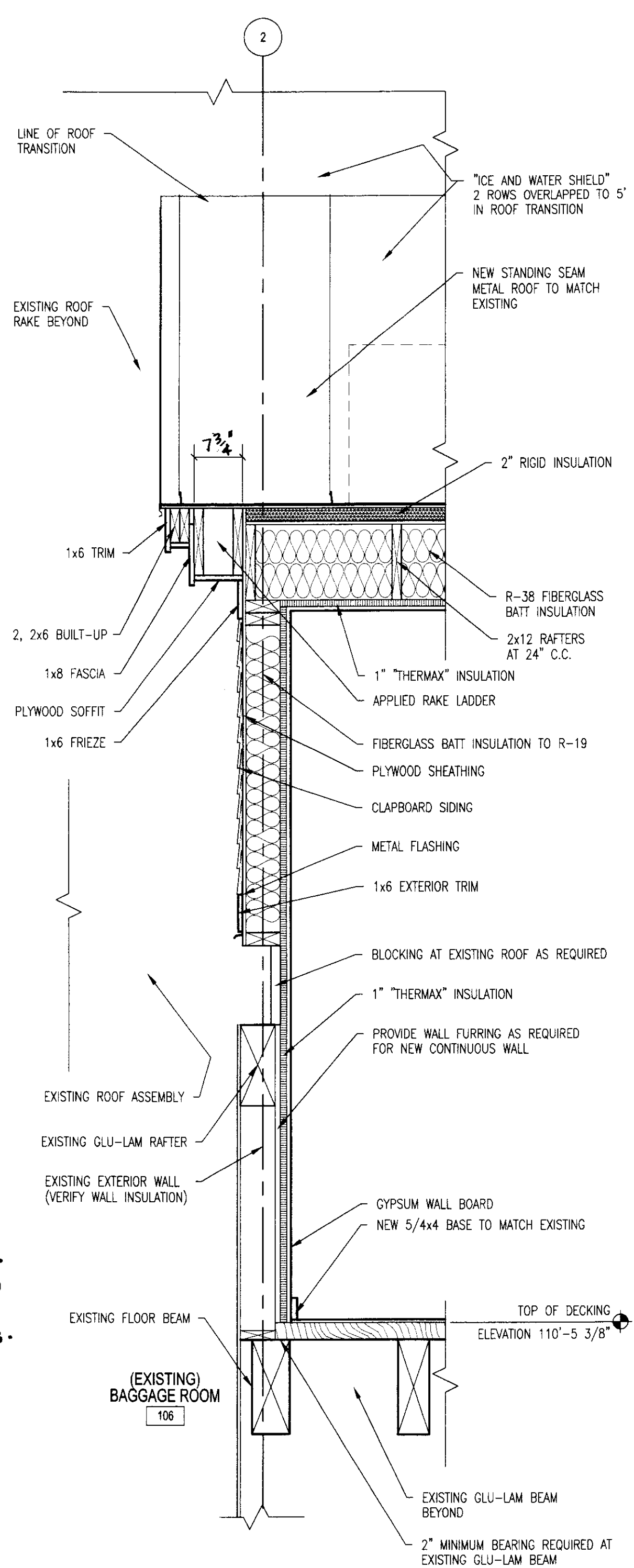
3 DETAIL AT NEW FLOOR OPENING
SCALE: 3/4" = 1'-0"



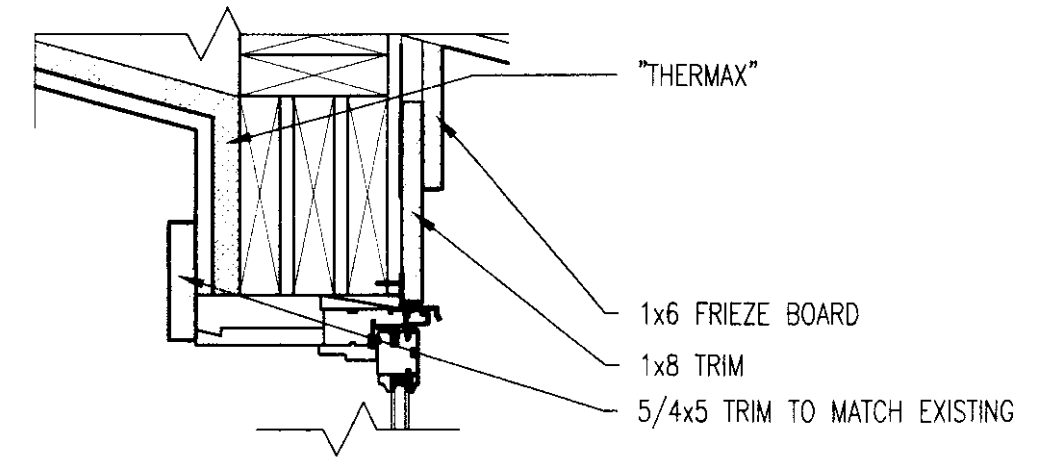
8 CENTER POST AT NEW WINDOWS
SCALE: 1 1/2" = 1'-0"



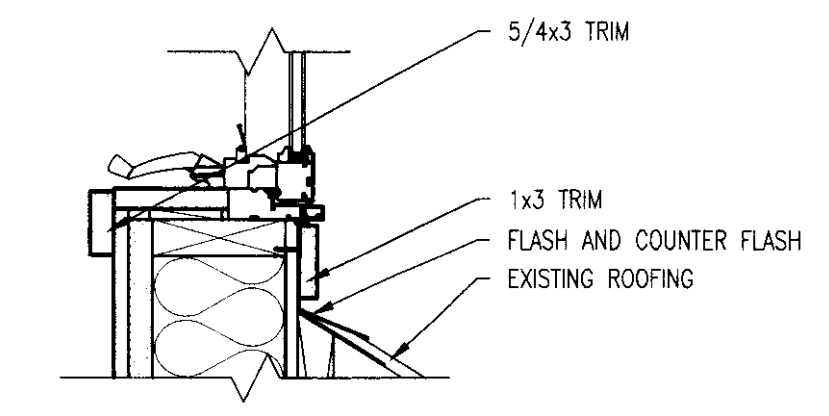
9 CORNER DETAIL - NEW DORMER
SCALE: 1 1/2" = 1'-0"



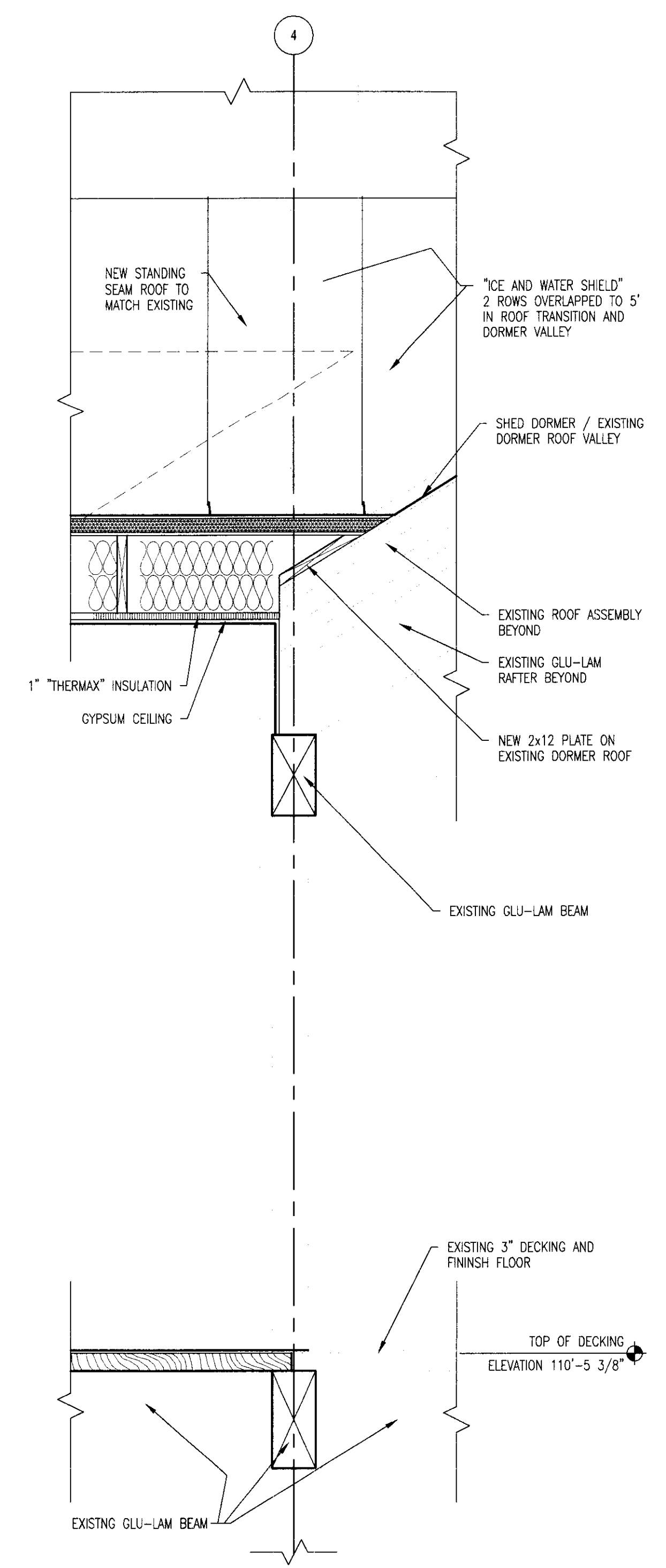
4 SHED DORMER WALL SECTION
SCALE: 3/4" = 1'-0"



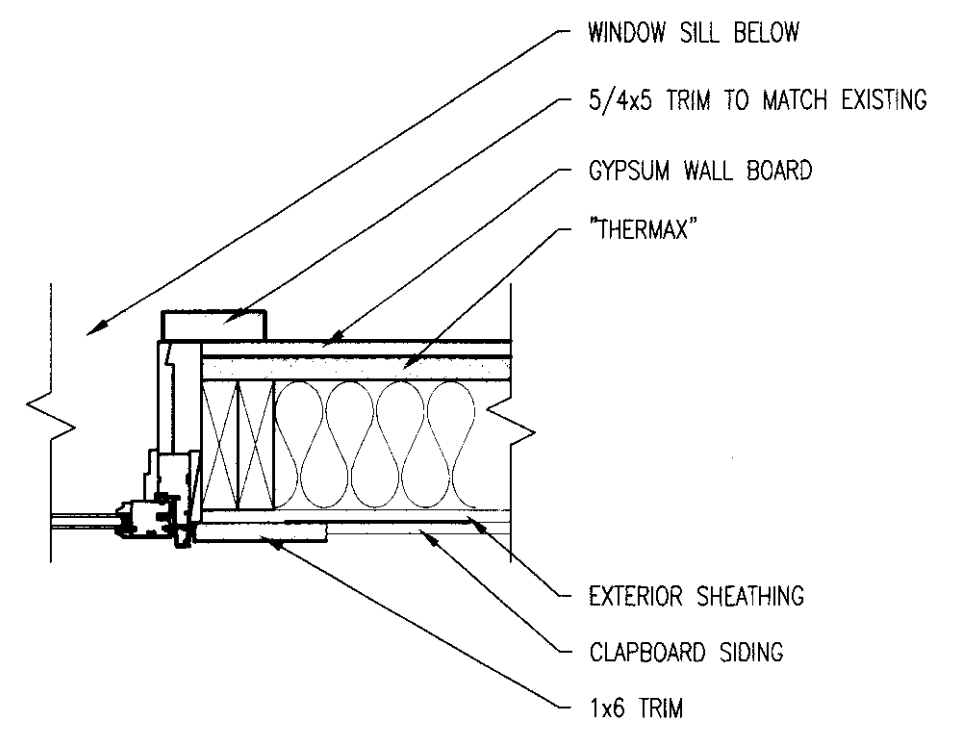
10 NEW WINDOW HEAD DETAIL
SCALE: 1 1/2" = 1'-0"



11 NEW WINDOW SILL DETAIL
SCALE: 1 1/2" = 1'-0"



5 WALL SECTION AT EXISTING WALL
SCALE: 3/4" = 1'-0"



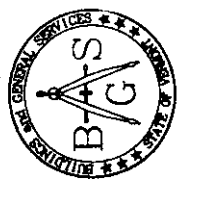
12 TYPICAL WINDOW JAMB
SCALE: 1 1/2" = 1'-0"



GBA

GOSSENS BACHMAN ARCHITECTS

85 Granite Shed Lane
Montpelier, Vermont 05602
P 802.229.1664 F 802.229.4822



STATE OF VERMONT
DEPARTMENT OF BUILDINGS
AND GENERAL SERVICES
AGENCY OF ADMINISTRATION
MONTPELIER, VERMONT



Rutland Airport

New Terminal
Rutland, Vermont

Revisions:

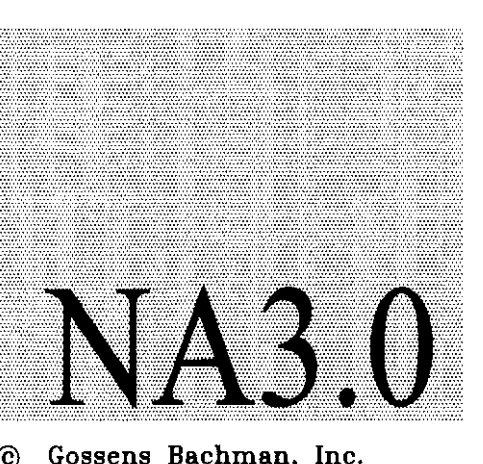
Job Number: 0302-105

File Name: 0302-NTdetails.dwg

Scale: As Noted

Date: March, 2005

DETAILS



© Gossens Bachman, Inc.

0:\p\0302-105-02-01.dwg 9/18/05 9:14:00 AM 12 08' 25" 41 5003