

**GBA**  
**GOSSENS**  
**BACHMAN**  
**ARCHITECTS**

85 Granite Shed Lane  
 Montpelier, Vermont 05602  
 P 802.229.1664 F 802.229.4822

**Rutland Airport**  
 Old Terminal

Rutland, Vermont

Revisions:

Job Number: 0302-10f

File Name: 0302-Details.dwg

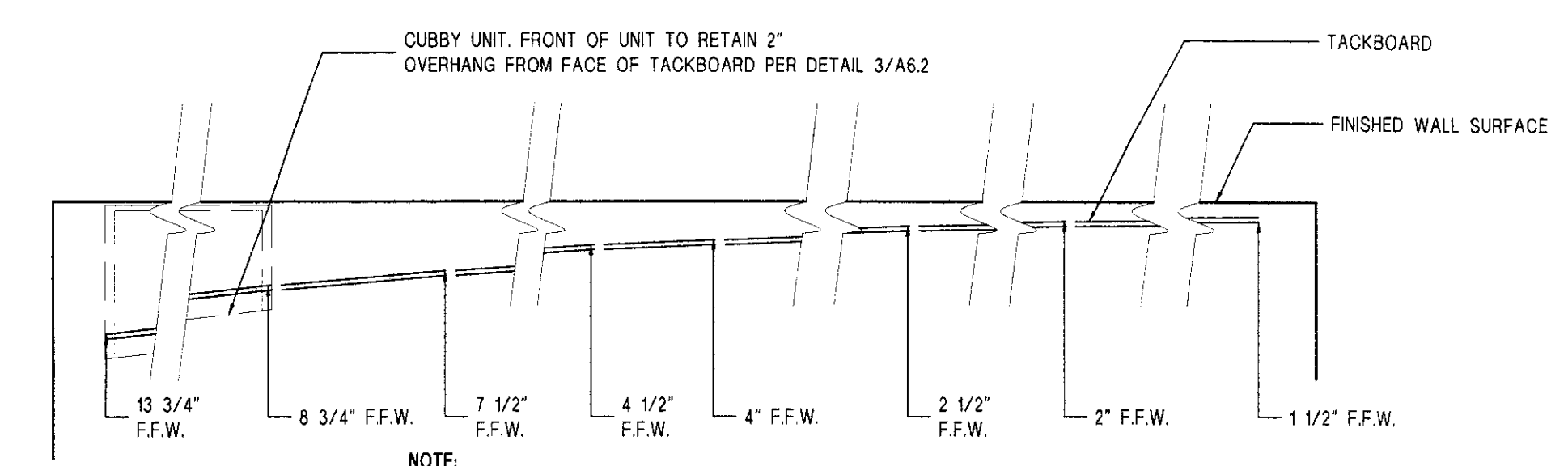
Scale: As Noted

Date: March 2007

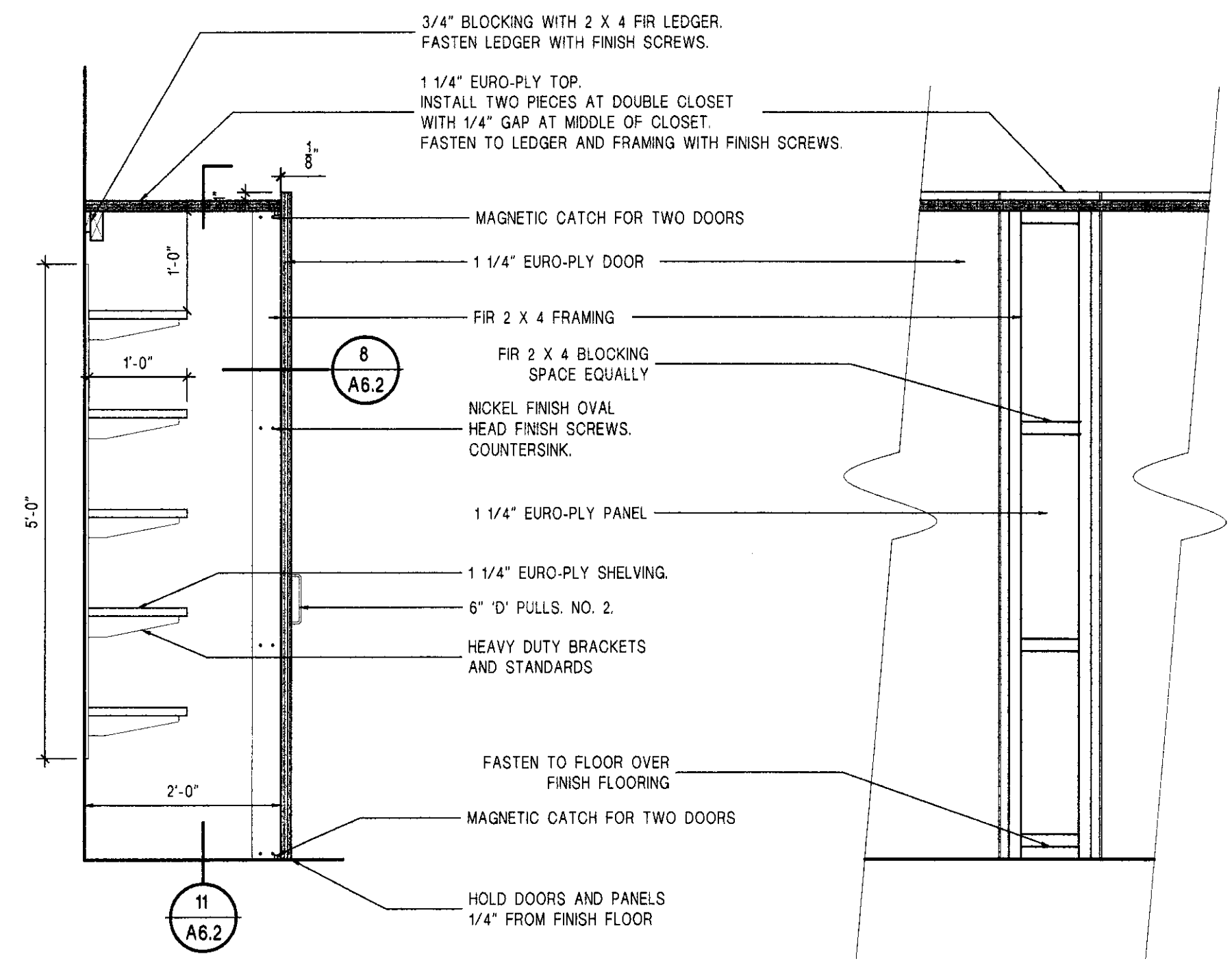
**DETAILS**

**A6.2**

© Gossens Bachman, Inc.

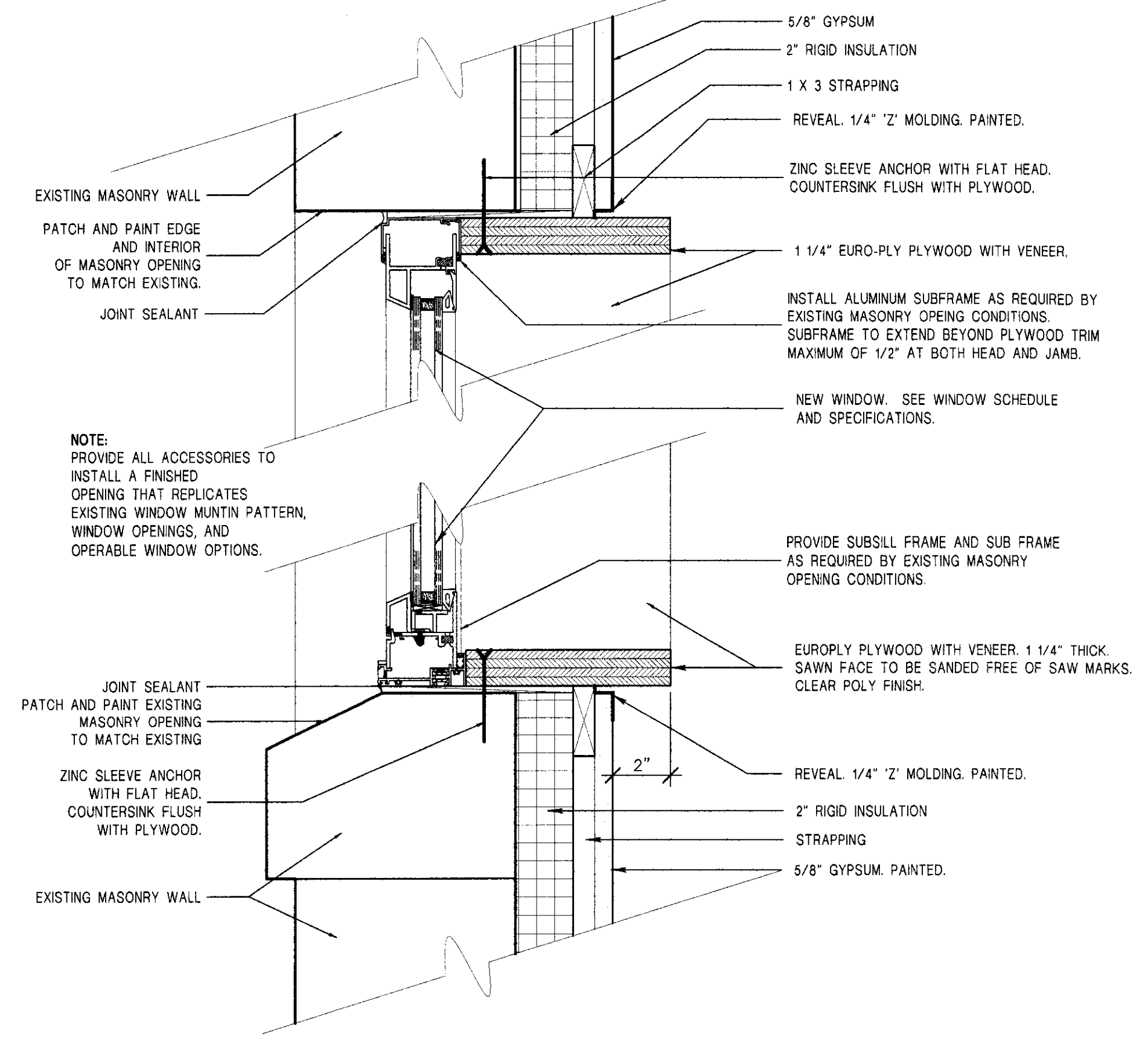


**9 PLAN DETAIL- TACKBOARD ARC**  
 SCALE: 3/4" = 1'-0"

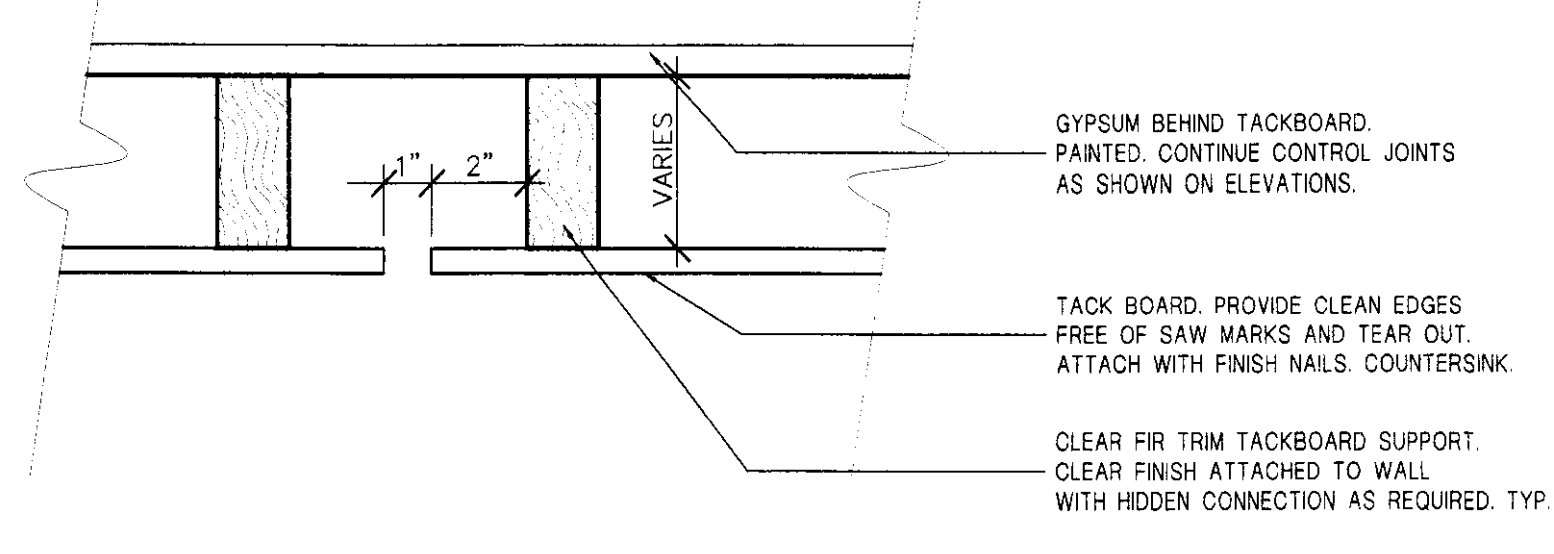


**10 SECTION-CLOSET AT TSA-OFFICE 111**  
 SCALE: 3/4" = 1'-0"

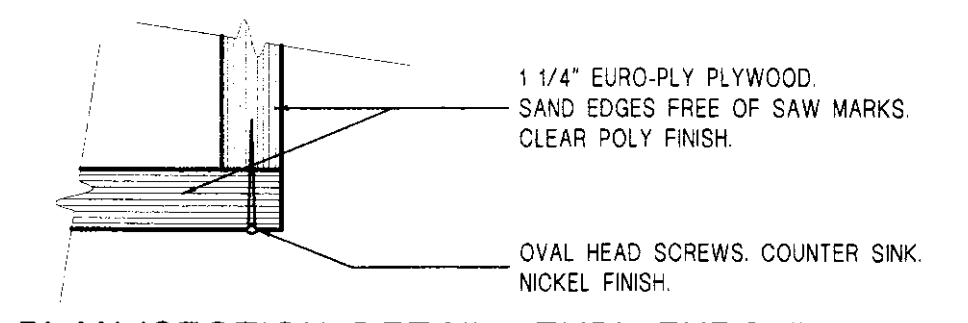
**11 SECTION-CLOSET AT TSA-OFFICE 111**  
 SCALE: 3/4" = 1'-0"



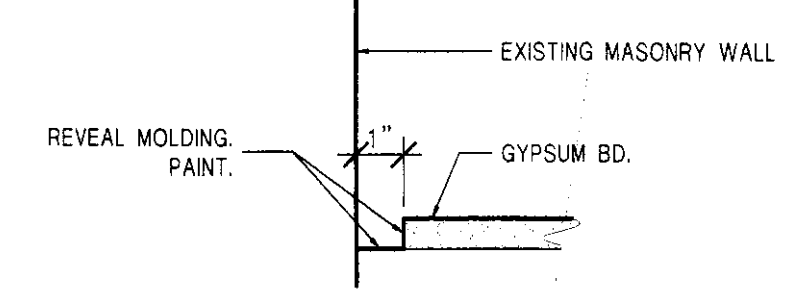
**12 SECTION DETAIL- TYPICAL WINDOW HEAD/JAMB AND SILL**  
 SCALE: 3" = 1'-0"



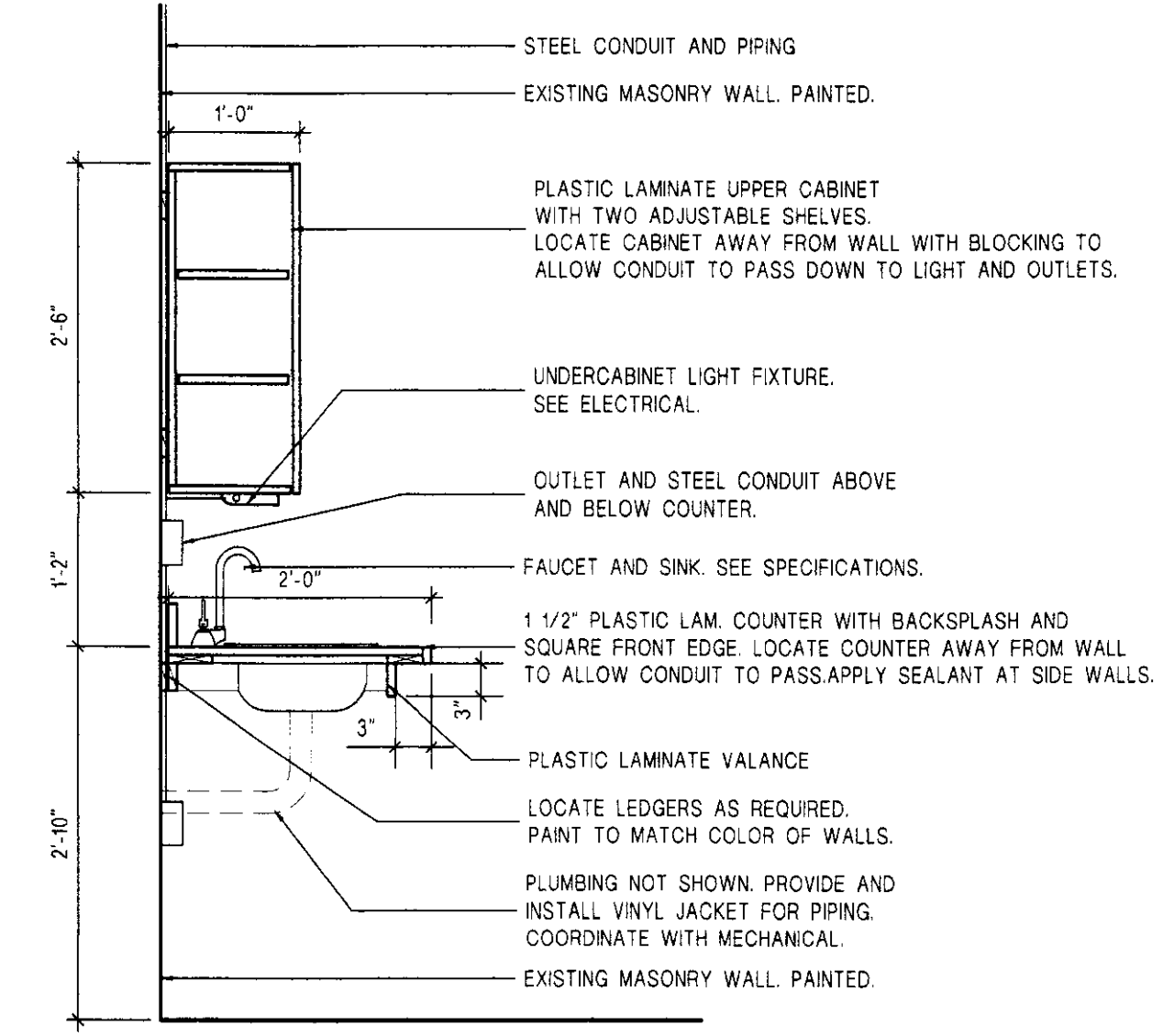
**4 PLAN DETAIL- TYPICAL TACKBOARD CONNECTION**  
 SCALE: 3" = 1'-0"



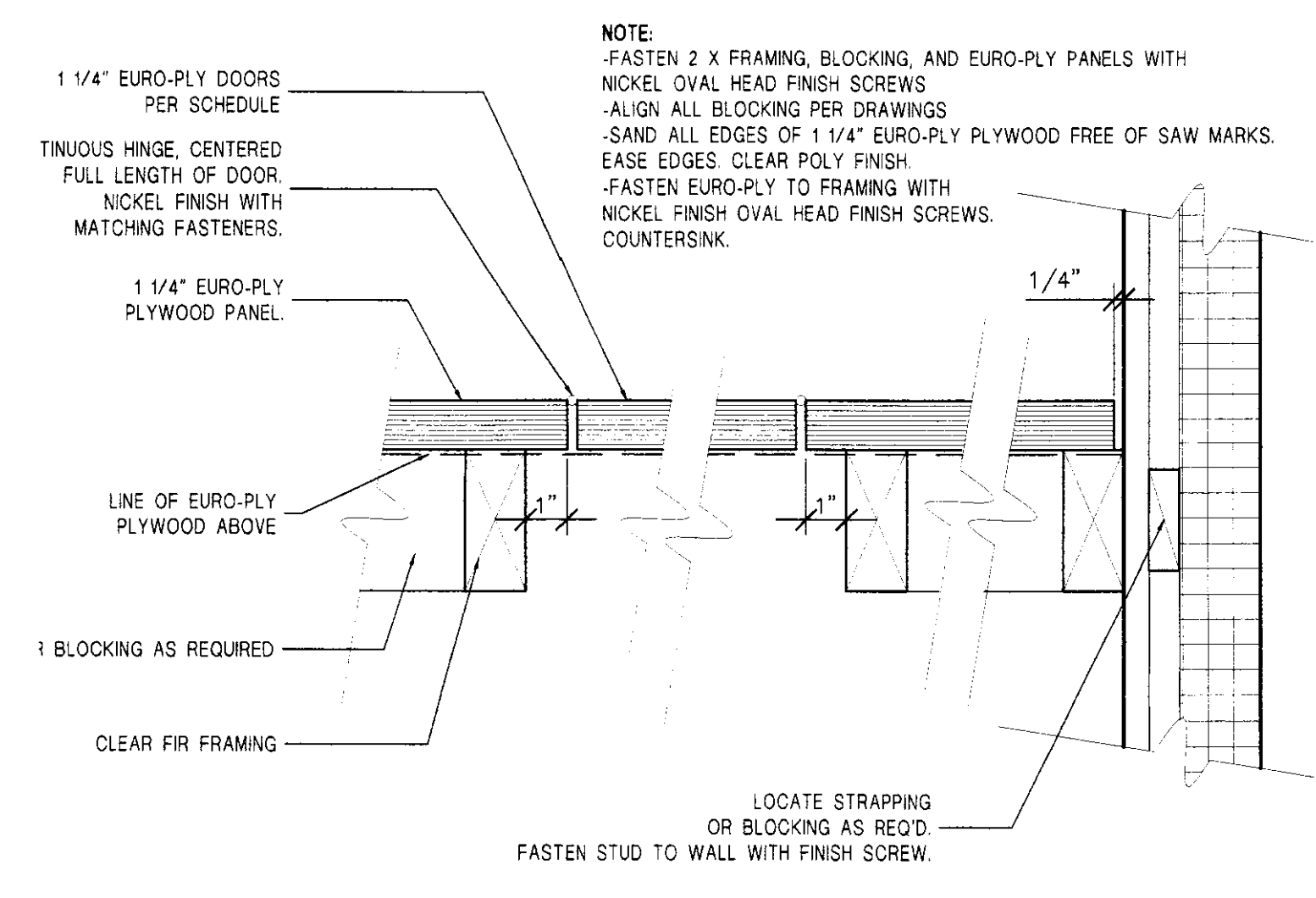
**5 PLAN/SECTION DETAIL- TYPICAL EURO-PLY PLYWOOD CORNER CONNECTION**  
 SCALE: 3" = 1'-0"



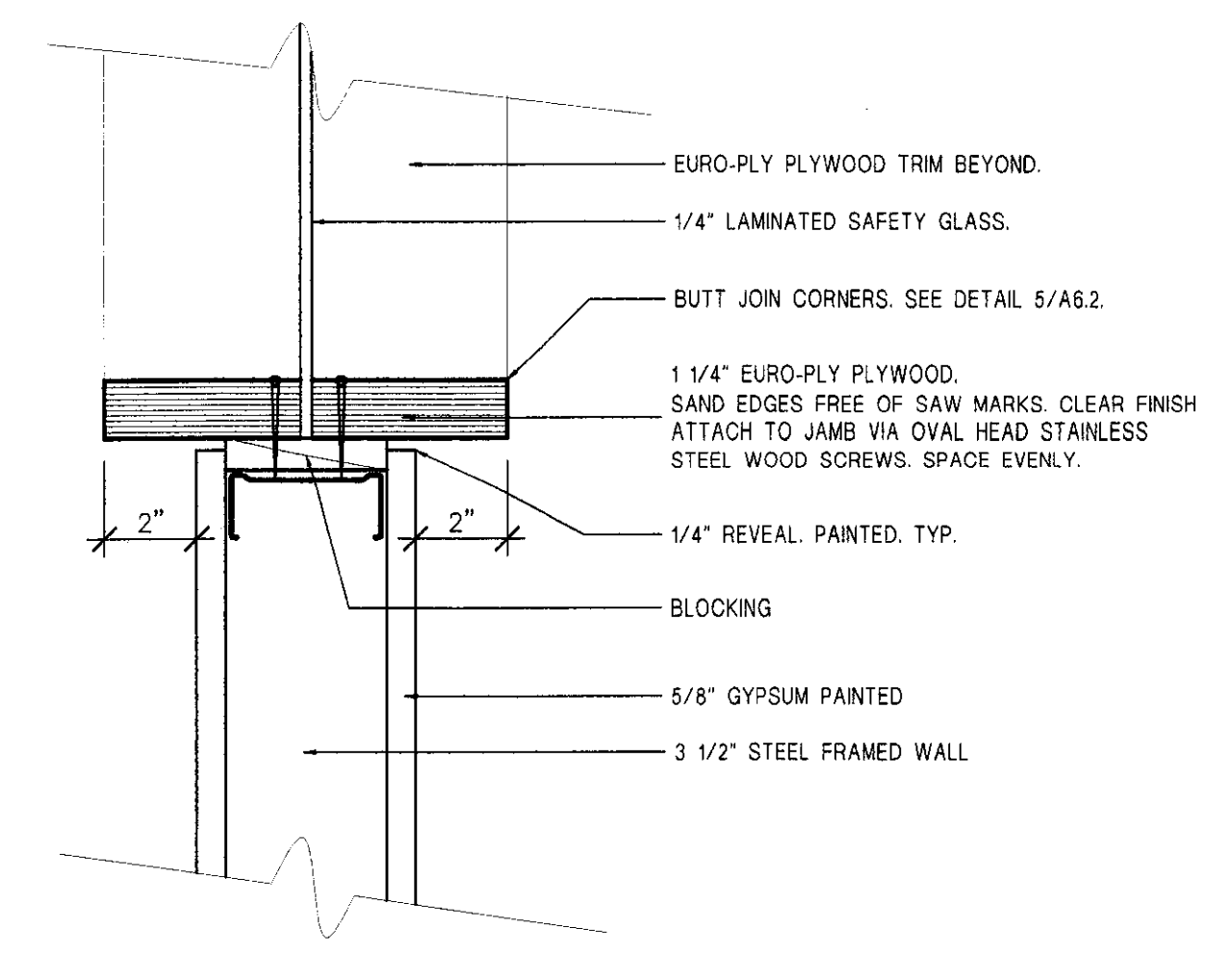
**6 PLAN DETAIL- TYPICAL 1" REVEAL AT FRAMED WALLS**  
 SCALE: 3" = 1'-0"



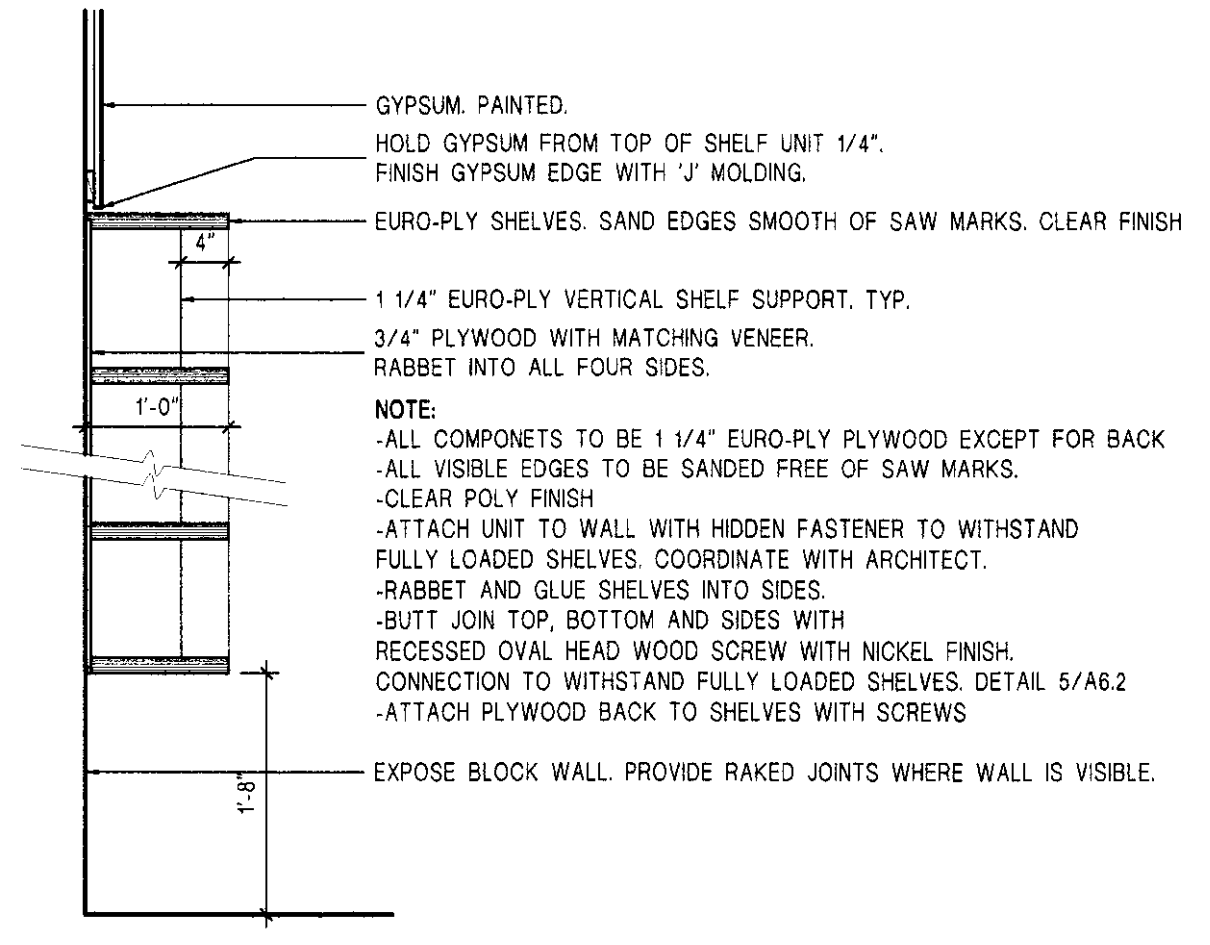
**7 SECTION- COUNTER AND UPPER CABINETS AT HALL 107**  
 SCALE: 3/4" = 1'-0"



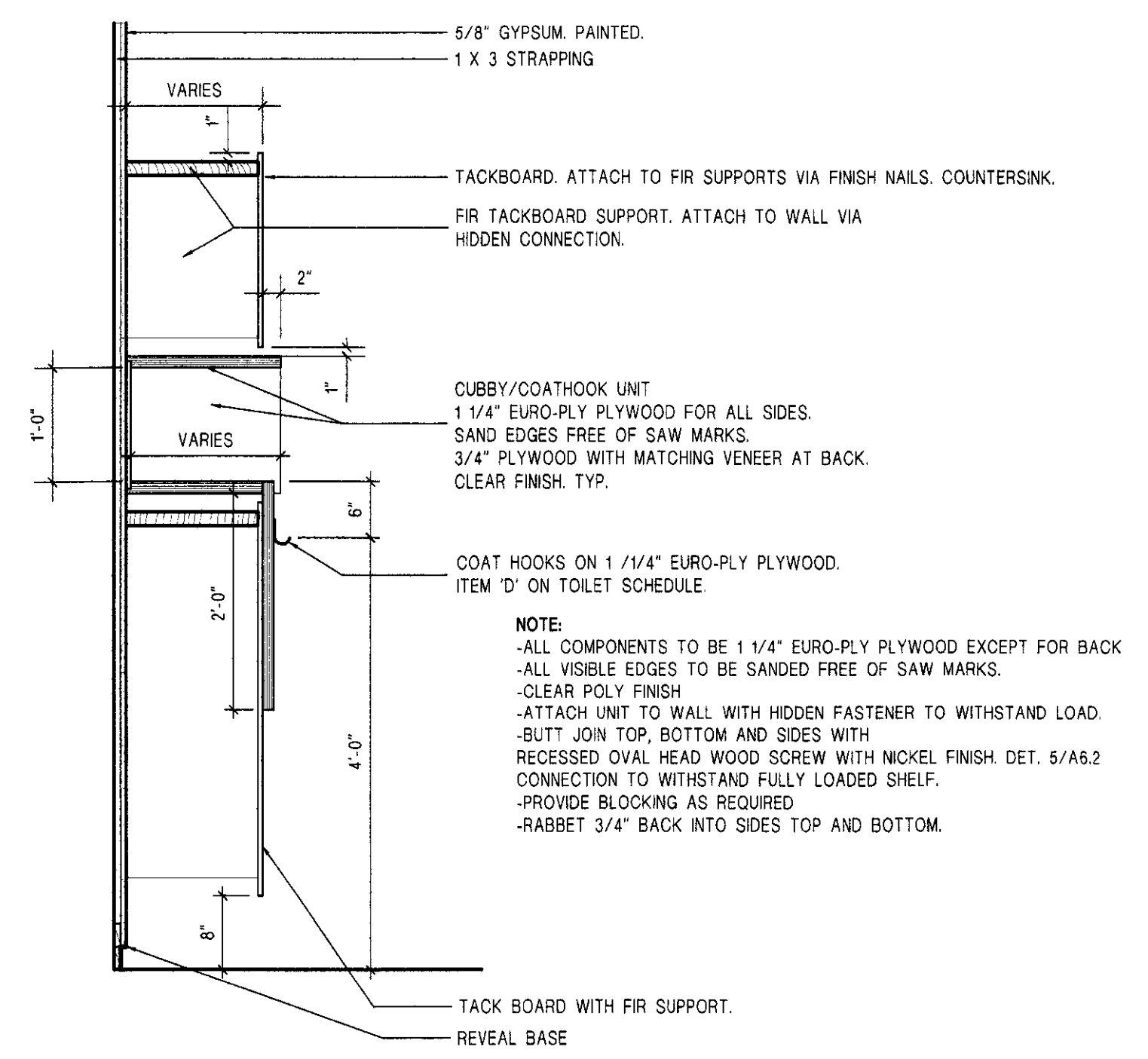
**8 PLAN DETAIL- CLOSET AT TSA-OFFICE 111**  
 SCALE: 3" = 1'-0"



**1 PLAN/SECTION DETAIL- TYPICAL HEAD/JAMB AT FIXED INT. WINDOW**  
 SCALE: 3" = 1'-0"



**2 SECTION- BOOK SHELVES IN HALL 112**  
 SCALE: 3/4" = 1'-0"



**3 SECTION- CUBBY/COAT HOOK UNIT**  
 SCALE: 3/4" = 1'-0"