



**GBA**

**GOSSENS  
BACHMAN  
ARCHITECTS**

85 Granite Shed Lane  
Montpelier, Vermont 05602  
P 802.229.1664 F 802.229.4822

DUCTWORK WITH ESCUTCHEON. PAINTED.  
LOCATE WITHIN EXISTING TRUSS SPACE  
ABOVE GYPSUM REVEAL CLOSE TO CEILING.  
GROUT METALY AROUND DUCT. FIRESTOP AS REQ'D.

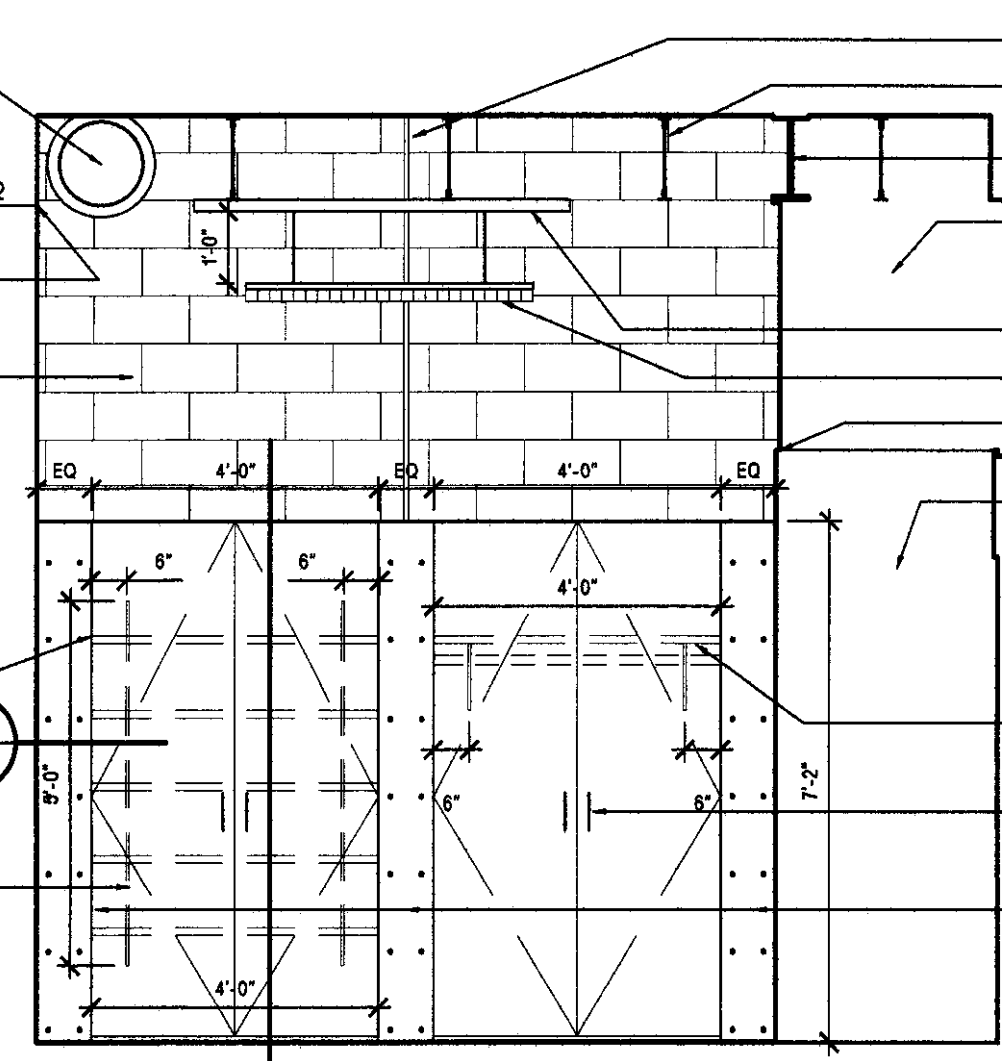
GYPSUM DATUM HALL 112  
GYPSUM REVEAL PAINT ABOVE.

EXISTING MASONRY WALL.  
CLEAN AND PATCH DEMO HOLES  
AND EXISTING THRU HOLES AND CRACKS.

NOTE:  
SPACE SCREWS EVENLY PER DRAWING.  
USE 1/8" OVAL HEAD NICKEL FINISH  
COUNTERSINK.

ALIGN TOP SHELF TO CLOSET ROD SHELF.  
SPACE REMAINING SHELVES EQUALLY

HEAVY DUTY STANDARDS AND BRACKETS  
FOR ADJUSTABLE SHELVES.  
1 1/4" EURO-PLY SHELVING.  
ALL EDGES TO BE FREE OF SAW MARKS.  
CENTER IN CLOSET.



**1 SOUTH ELEVATION- TSA-OFFICE 111**  
SCALE: 3/8" = 1'-0"

STEEL CONDUIT TO LIGHTS FROM STOR. 108.  
EXISTING ROOF STRUCTURE

EXISTING STEEL BEAM  
GYPSUM BOARD - PAINTED.

LAMINATED GLASS  
STEEL UNISTRUT LIGHT SUPPORT. PAINTED.

TOP OF GYPSUM  
GYPSUM BOARD - PAINTED.

HEAVY DUTY CLOSET SHELF  
AND ROD SUPPORTS (2)  
1 1/4" EURO-PLY SHELF.  
FIR CLOSET ROD.

6" D" PULLS NO. 2 TYP.  
CLOSET. EURO-PLY PLYWOOD DOORS  
(SEE SCHEDULE) AND PANELS.  
ALL EDGES TO BE FREE OF SAW MARKS.  
CLEAR POLY FINISH. NOTE FINISH SCREW LAYOUT.

RELOCATED VENT PIPE WITH ESCUTCHEON.  
PAINTED. KEEP ABOVE GYPSUM DATUM  
IN HALL 112.

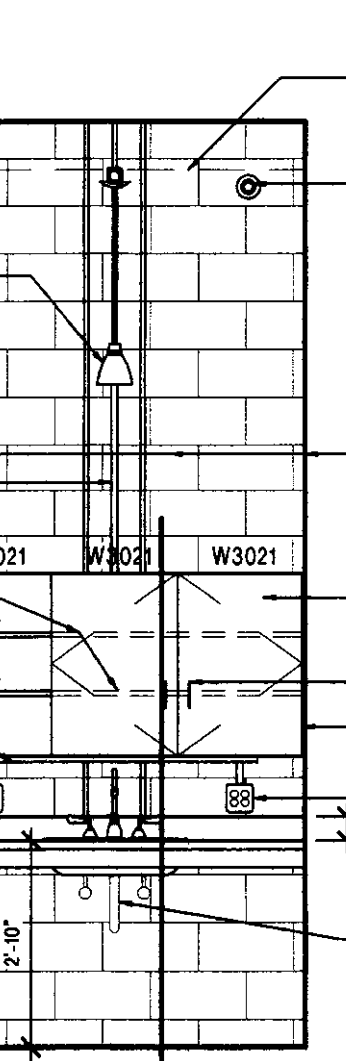
EXISTING MASONRY WALL.  
CLEAN. PATCH AND PAINT TO CEILING.  
PATCH DEMO HOLES AND  
EXISTING THRU HOLES AND CRACKS.

PLASTIC LAMINATE CABINET  
AND ADJUSTABLE SHELVES.

4" D" PULLS NO. 1.  
FILLER PANELS BOTH SIDES TYP.

OUTLETS. CENTER ON CABINET ABOVE.  
SEE ELEC.

SINK AND FAUCET. SEE SPEC.  
WHITE VINYL JACKET ON PIPES BELOW.



**2 WEST ELEVATION- HALL 107**  
SCALE: 3/8" = 1'-0"

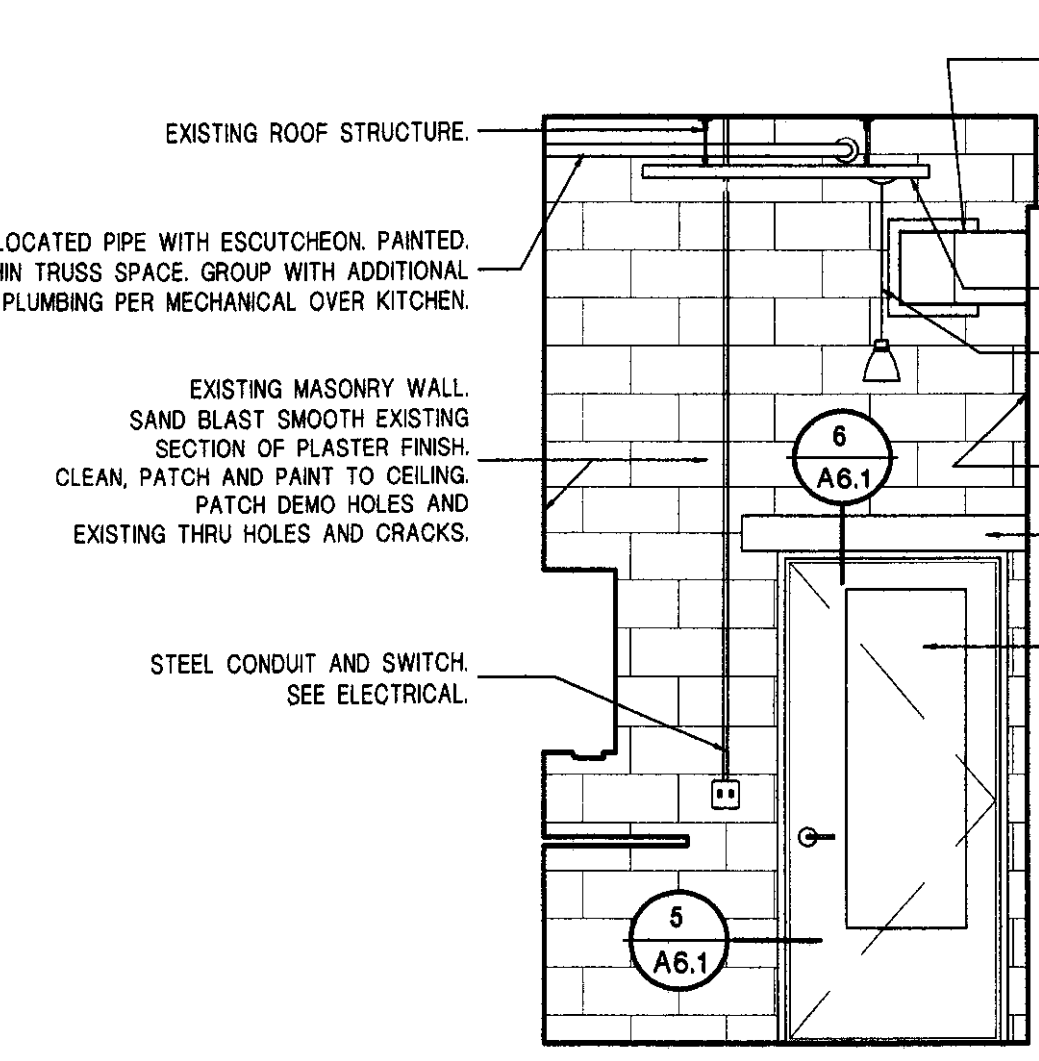
EXISTING ROOF STRUCTURE.  
RELOCATED PIPE WITH ESCUTCHEON. PAINTED.  
KEEP WITHIN TRUSS SPACE. GROUP WITH ADDITIONAL  
PLUMBING PER MECHANICAL OVER KITCHEN.

EXISTING MASONRY WALL.  
SAND BLAST SMOOTH EXISTING  
SECTION OF PLASTER FINISH.  
CLEAN. PATCH AND PAINT TO CEILING.  
PATCH DEMO HOLES AND  
EXISTING THRU HOLES AND CRACKS.

EXISTING MASONRY WALL.  
SAND BLAST SMOOTH EXISTING  
SECTION OF PLASTER FINISH.  
CLEAN. PATCH AND PAINT TO CEILING.  
PATCH DEMO HOLES AND  
EXISTING THRU HOLES AND CRACKS.

STEEL CONDUIT AND SWITCH.  
SEE ELECTRICAL.

NEW DOOR AND DOOR OPENING  
WITH METAL FRAME



**3 NORTH ELEVATION- HALL 107**  
SCALE: 3/8" = 1'-0"

NOTE:  
ALL PIPING TO HAVE MATCHING  
ESCUTCHEONS AT ALL VISIBLE  
WALL PENETRATIONS.

DUCTWORK WITH ESCUTCHEON. PAINTED.  
LOCATE BELOW GYPSUM DATUM.  
FIRESTOP PENETRATION AS REQ'D.

GYPSUM DATUM HALL 112

EXISTING MASONRY.  
SAND EXISTING PLASTER FINISH SMOOTH.  
CLEAN. PATCH AND PAINT TO CEILING.  
PATCH DEMO HOLES AND EXISTING  
THRU HOLES AND CRACKS.

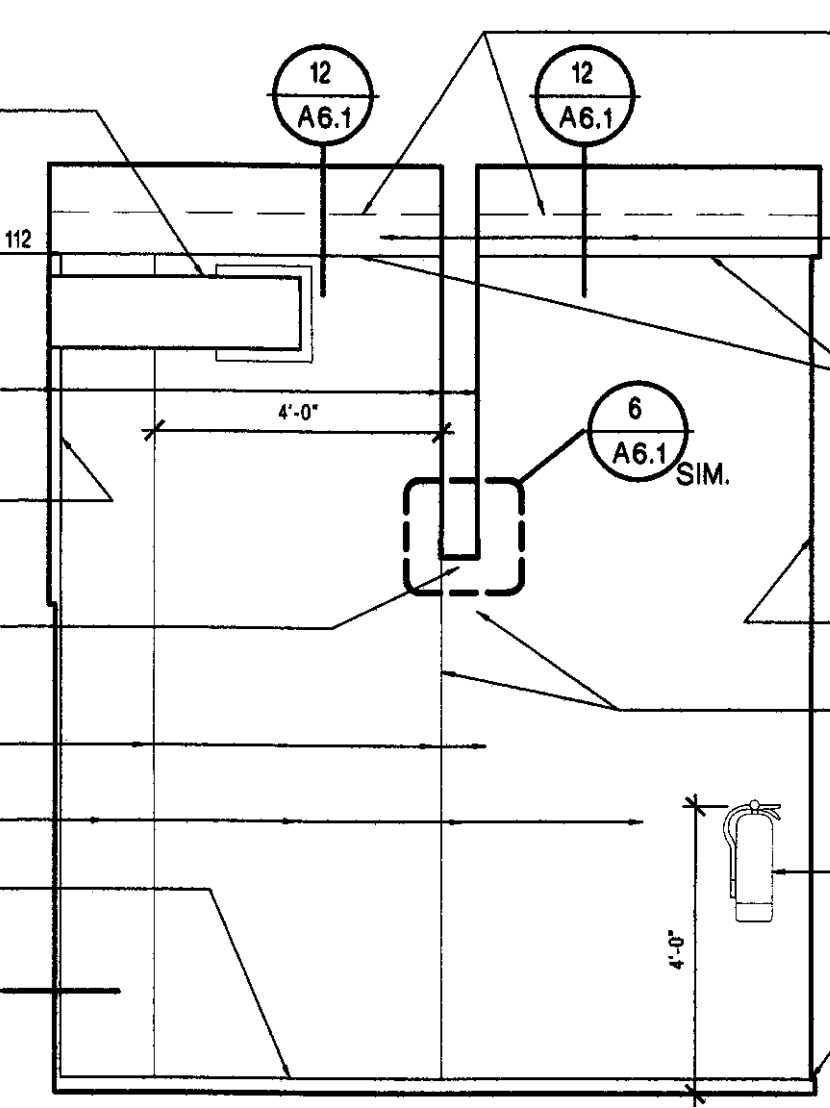
1" REVEAL. PAINTED.

NEW STEEL LINTEL AT HEIGHT OF  
EXISTING OPENING. ENLARGE MASONRY  
OPENING PER PLAN AND ELEVATION.  
MORTAR AND PAINT GAP BETWEEN ANGLES.  
SEE STRUCTURAL.

VERTICAL CONTROL JOINTS.  
CONTINUE VERTICAL CONTROL JOINTS  
UP TO GYPSUM DATUM.

GYPSUM OVER STRAPPING. PAINTED.

REVEAL BASE



**4 EAST ELEVATION-HALL 106 AND 107**  
SCALE: 3/8" = 1'-0"

BOTTOM OF EXISTING STEEL TRUSS  
IN FOREGROUND.

EXISTING MASONRY WALL.  
PAINT ABOVE GYPSUM.

TOP OF GYPSUM WITH 'J' MOLDING.  
ALIGN WITH TOP OF GYPSUM IN HALL 112.  
1 X 3 STRAPPING 16" O.C. BEHIND ON EXISTING  
MASONRY WALL.

GYPSUM. PAINTED.

CONTINUE VERTICAL CONTROL JOINTS  
UP TO GYPSUM DATUM.

FIRE EXTINGUISHER WITH HANGAR

REVEAL BASE

EXISTING MASONRY WALL  
PAINTED ABOVE  
TOP OF GYPSUM

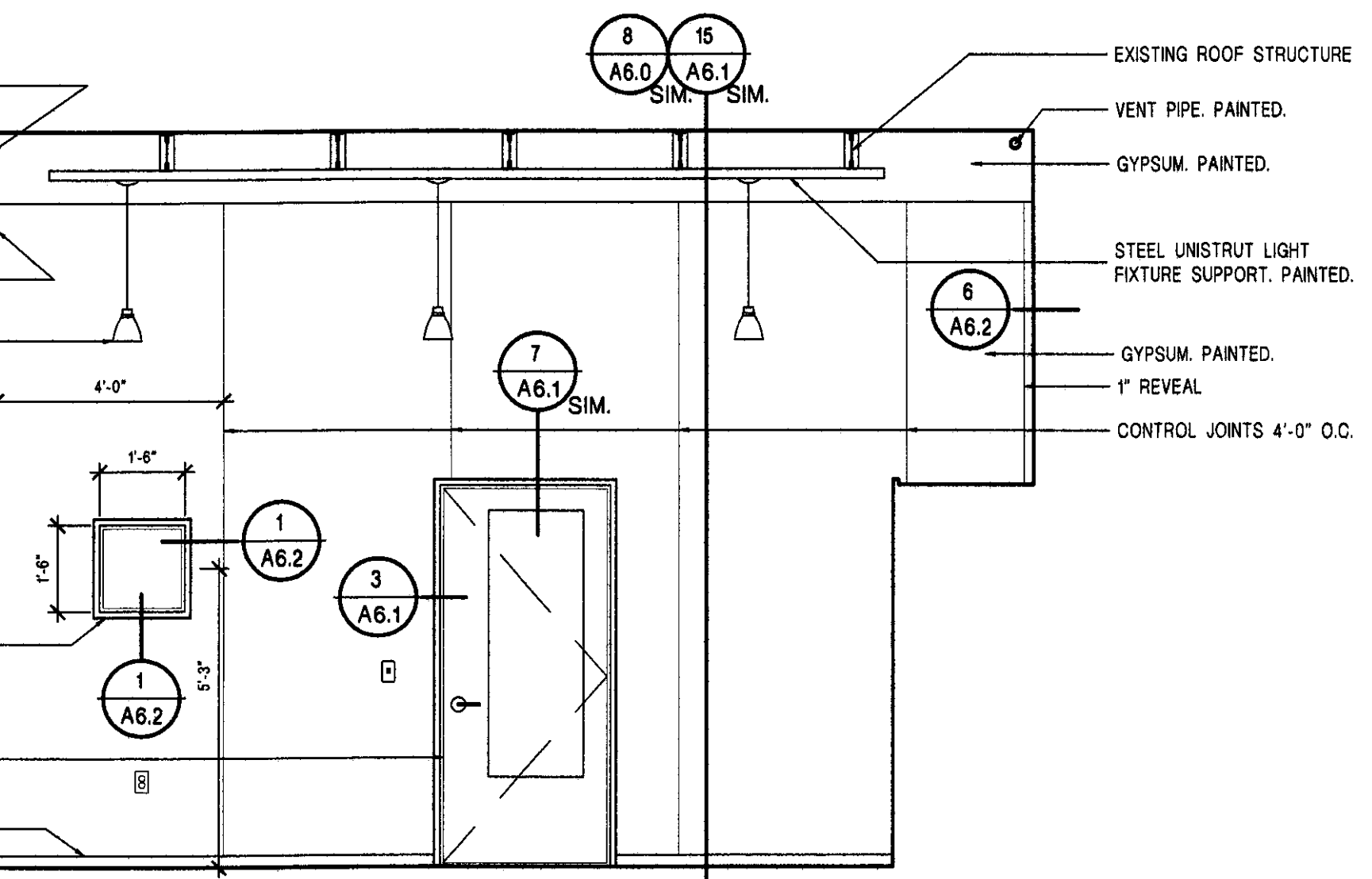
GYPSUM. PAINTED.

LIGHT FIXTURES.  
LOCATE AT SAME HEIGHT  
AS FIXTURES IN HALLWAY 112

WINDOW WITH 1 1/4" EURO-PLY TRIM.  
CENTER ON KITCHEN LIGHT.  
SEE ELEV. 7/A5.1

NEW DOOR WITH METAL FRAME  
SEE SCHEDULE.

REVEAL BASE



**5 SOUTH ELEVATION-HALL 106**  
SCALE: 3/8" = 1'-0"

GYPSUM. PAINT  
ABOVE 'J' MOLD.

TOP OF GYPSUM  
WITH 'J' MOLDING

CURVED GYPSUM WALL.  
PAINTED.

1 1/4" EURO-PLY PLYWOOD DOORS (SEE SCHEDULE)  
AND PANELS. SAND ALL EDGES FREE OF SAW MARKS.  
CLEAR POLY FINISH.

1 1/4" EURO-PLY PLYWOOD 18" DEEP ADJUSTABLE SHELVES (5)  
ON HEAVY DUTY STANDARDS. CENTER ON REAR WALL.

6" D" PULLS NO. 2

NOTE:  
SPACE SCREWS EVENLY PER DRAWING.  
USE 1/8" OVAL HEAD NICKEL FINISH.  
COUNTERSINK.

**6 WEST ELEVATION-HALL 106**  
SCALE: 3/8" = 1'-0"

VENT PIPE. PAINTED.

BOTTOM OF EXISTING ROOF STRUCTURE IN FOREGROUND.

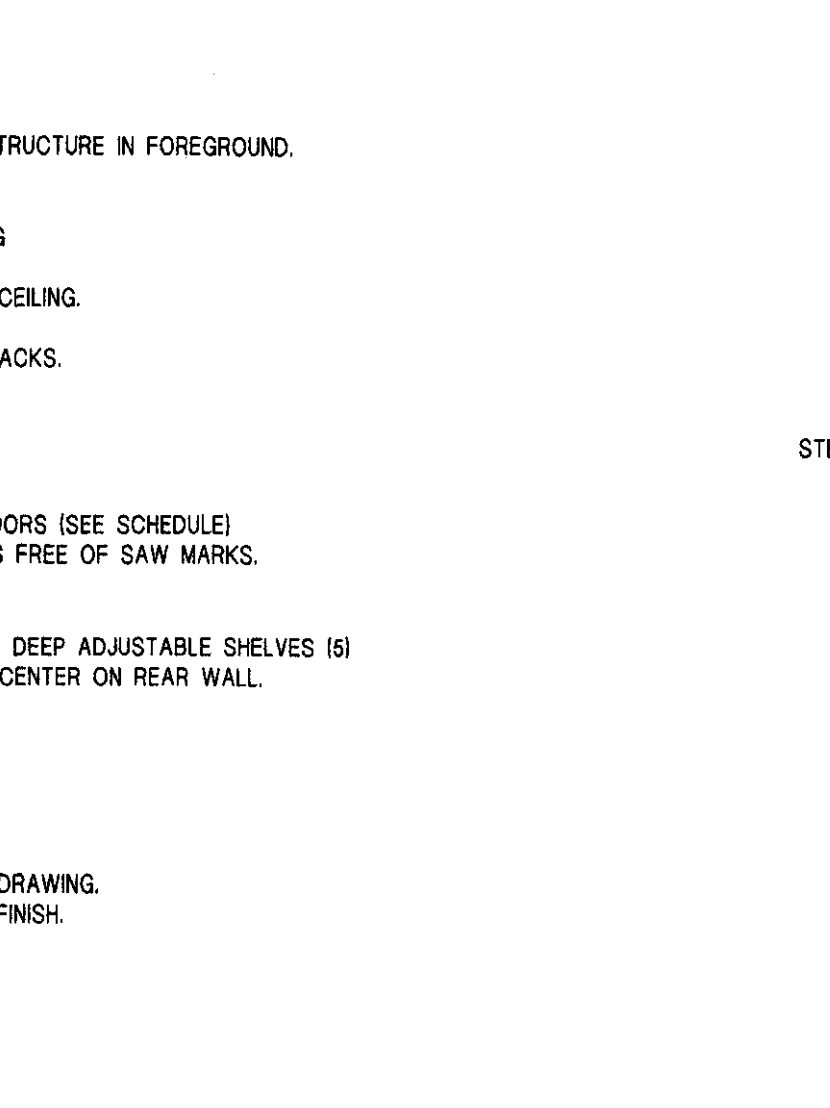
EXISTING MASONRY WALL.  
SAND BLAST SMOOTH EXISTING  
SECTION OF PLASTER FINISH.  
CLEAN. PATCH AND PAINT TO CEILING.  
PATCH DEMO HOLES AND  
EXISTING THRU HOLES AND CRACKS.

1 1/4" EURO-PLY PLYWOOD DOORS (SEE SCHEDULE)  
AND PANELS. SAND ALL EDGES FREE OF SAW MARKS.  
CLEAR POLY FINISH.

1 1/4" EURO-PLY PLYWOOD 18" DEEP ADJUSTABLE SHELVES (5)  
ON HEAVY DUTY STANDARDS. CENTER ON REAR WALL.

6" D" PULLS NO. 2

NOTE:  
SPACE SCREWS EVENLY PER DRAWING.  
USE 1/8" OVAL HEAD NICKEL FINISH.  
COUNTERSINK.



EXISTING MASONRY WALL.  
SAND BLAST SMOOTH EXISTING  
SECTION OF PLASTER FINISH.  
CLEAN. PATCH AND PAINT TO CEILING.  
PATCH DEMO HOLES AND  
EXISTING THRU HOLES AND CRACKS.

STEEL HEADER. PAINTED. SEE STRUCTURAL.

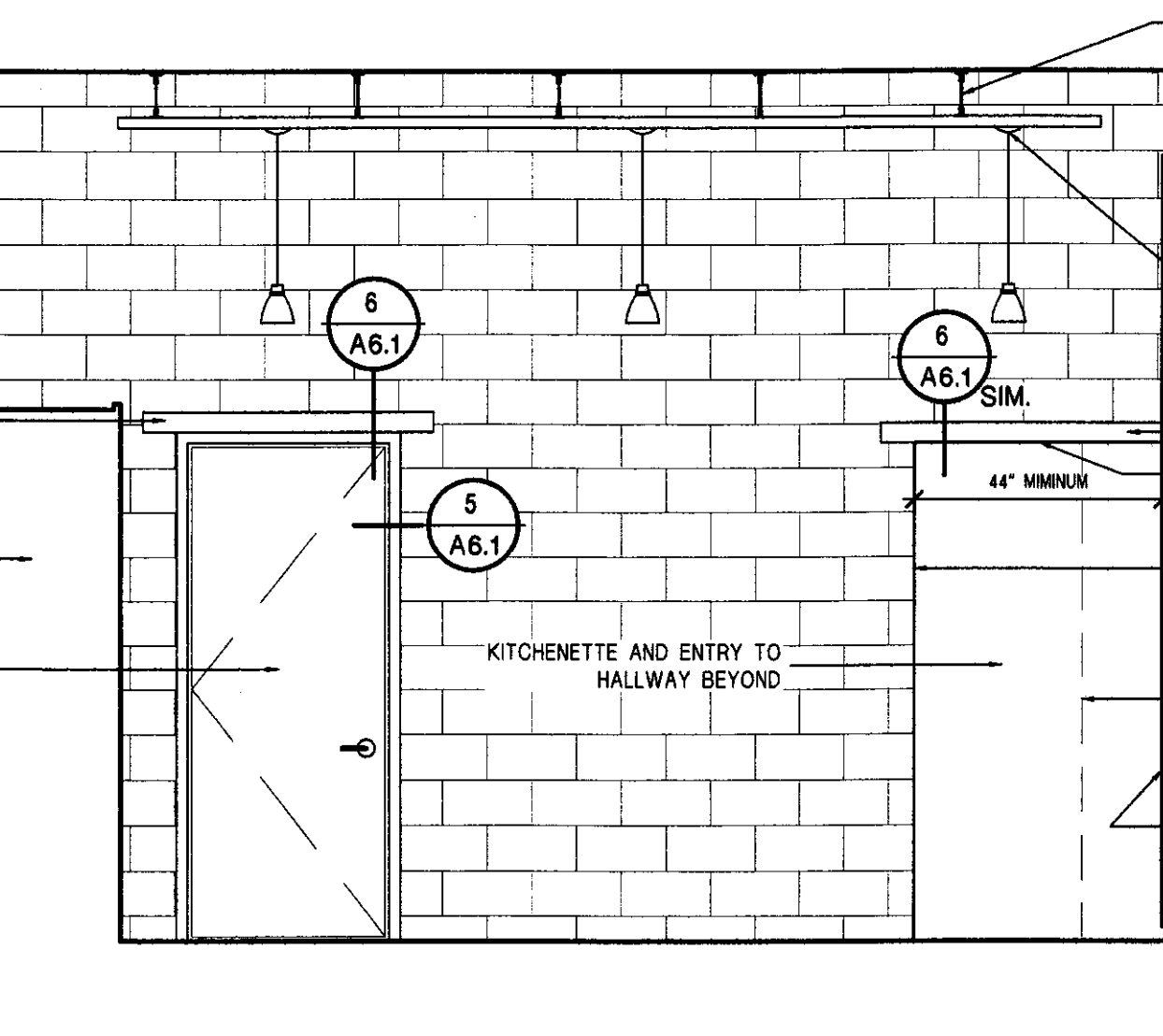
CLOSET

NEW DOOR WITH METAL FRAME. SEE SCHEDULE.  
ENLARGE EXISTING OPENING AS REQUIRED.

KITCHENETTE AND ENTRY TO  
HALLWAY BEYOND

GYPSUM. PAINTED.

REVEAL BASE



**7 NORTH ELEVATION- HALL 106**  
SCALE: 3/8" = 1'-0"

**Rutland  
Airport**

Old Terminal

Rutland, Vermont

Revisions:

Job Number: 0302-105

File Name: 0302-InteriorElev.dwg

Scale: As Noted

Date: March 2005

**INTERIOR  
ELEVATIONS**

**A5.1**

© Gossens Bachman, Inc.