

**1 DEMOLITION PLAN**  
SCALE: 1/8" = 1'-0"

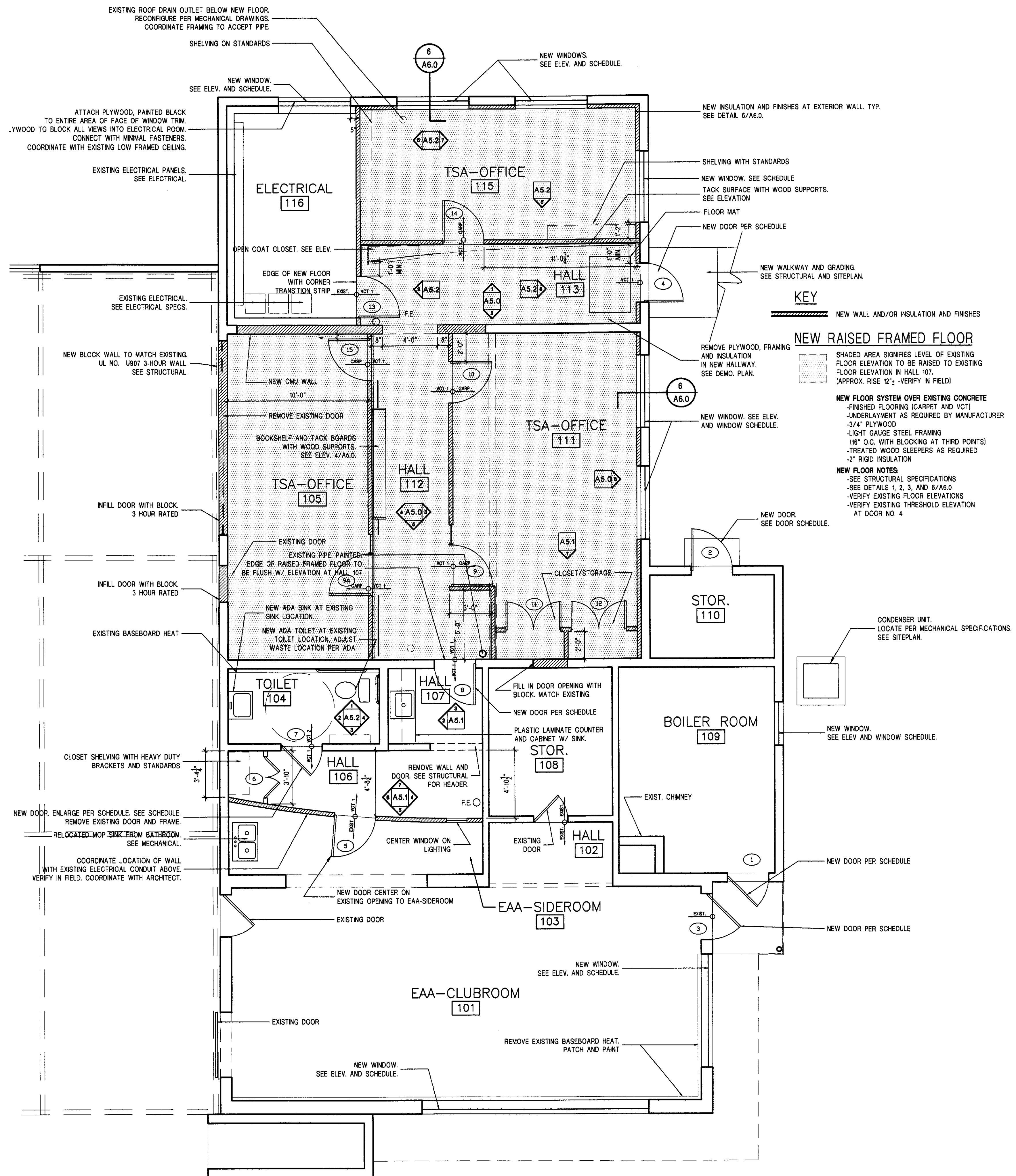
**DEMOLITION KEY**

(SEE SHEET A1.0 FOR GENERAL DEMOLITION NOTES)

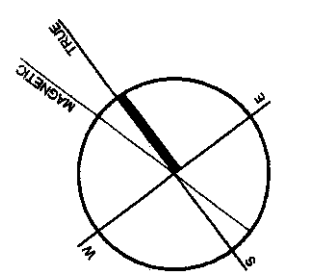
----- ITEMS TO BE REMOVED

- ▲ REMOVE ELECTRICAL AND MECHANICAL COMPONENTS PER MECHANICAL AND ELECTRICAL SPECIFICATIONS.
- ▲ REMOVE CEILING GRID.
- ▲ REMOVE FLOOR TILE. DO NOT REMOVE EXISTING FLOOR TILE SOUTH OF ARCED WALL IN HALL 106. SEE PLAN.
- ▲ REMOVE ALL BATHROOM ACCESSORIES AND METAL CEILING GRID EXCEPT MIRROR. MIRROR TO BE RELOCATED. SEE INTERIOR ELEVATIONS.
- ▲ REMOVE METAL CEILING GRID AND SUSPENDED 12 X 12 CEILING ABOVE METAL GRID.
- ▲ REMOVE MISCELLANEOUS ITEMS NOT ATTACHED TO WALLS AND CEILING. COORDINATE WITH ARCHITECT AND OWNER.
- ▲ REMOVE METAL CEILING GRID AND 12 X 12 SUSPENDED CEILING FARTHER ABOVE NORTH OF FUTURE ARCED WALL.
- ▲ REMOVE EXTERIOR MECHANICAL AND ELECTRICAL COMPONENTS PER MECHANICAL AND ELECTRICAL SPECIFICATIONS.

**NOTE:**  
INTENTION OF DEMOLITION NOTES ON ARCHITECTURAL, MECHANICAL AND ELECTRICAL ARE TO REMOVE OBSOLETE COMPONENTS TO BE UNCLUTTERED FOR VISUAL EXPOSURE.



**1 PLAN**  
SCALE: 1/4" = 1'-0"



**GBA**  
**GOSSENS BACHMAN ARCHITECTS**  
85 Granite Shed Lane  
Montpelier, Vermont 05602  
P 802.229.1664 F 802.229.4822



**KEY**  
NEW WALL AND/OR INSULATION AND FINISHES  
**NEW RAISED FRAMED FLOOR**  
SHADED AREA SIGNIFIES LEVEL OF EXISTING FLOOR ELEVATION TO BE RAISED TO EXISTING FLOOR ELEVATION IN HALL 107. (APPROX. RISE 12"; -VERIFY IN FIELD)  
**NEW FLOOR SYSTEM OVER EXISTING CONCRETE**  
-FINISHED FLOORING (CARPET AND VCT)  
-UNDERLAYMENT AS REQUIRED BY MANUFACTURER  
-3/4" PLYWOOD  
-LIGHT GAUGE STEEL FRAMING (16" O.C. WITH BLOCKING AT THIRD POINTS)  
-TREATED WOOD SLEEPERS AS REQUIRED  
-2" RIGID INSULATION  
**NEW FLOOR NOTES:**  
-SEE STRUCTURAL SPECIFICATIONS  
-SEE DETAILS 1, 2, 3, AND 6/A6.0  
-VERIFY EXISTING FLOOR ELEVATIONS  
-VERIFY EXISTING THRESHOLD ELEVATION AT DOOR NO. 4

**Rutland Airport**  
Old Terminal  
Rutland, Vermont

Revisions:  
Job Number: 0302-105  
File Name: 0302-Plan.dwg  
Scale: As Noted  
Date: March 2005

**PLAN AND DEMO PLAN**

**A2.0**