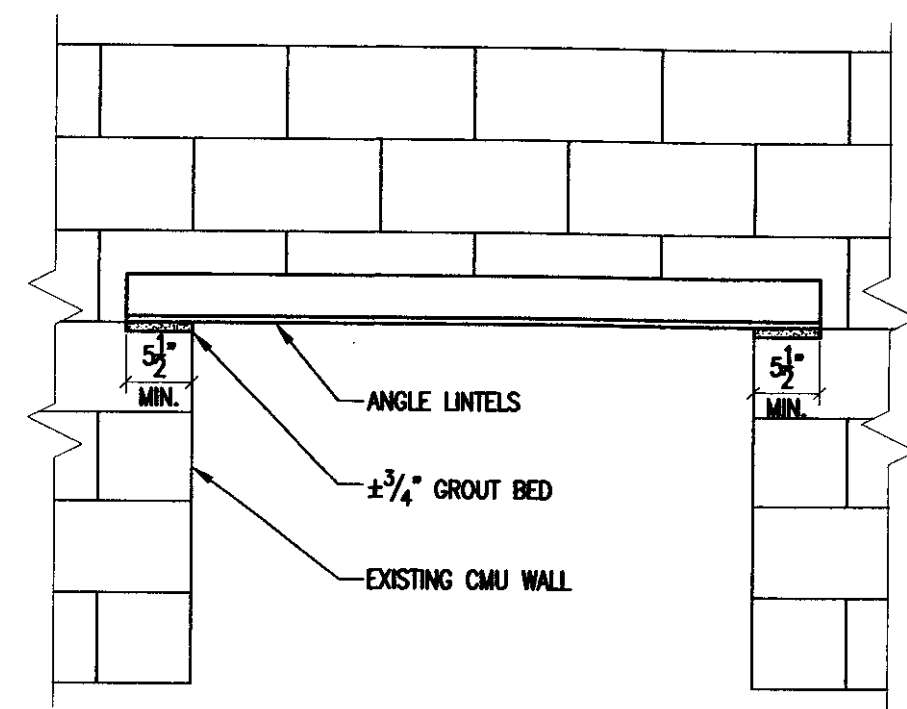


PLAN VIEW

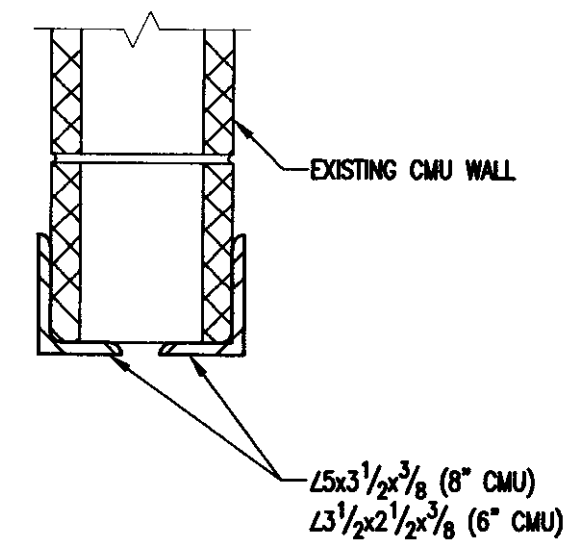
3/32"=1'-0"



TYPICAL LINTEL ELEVATION

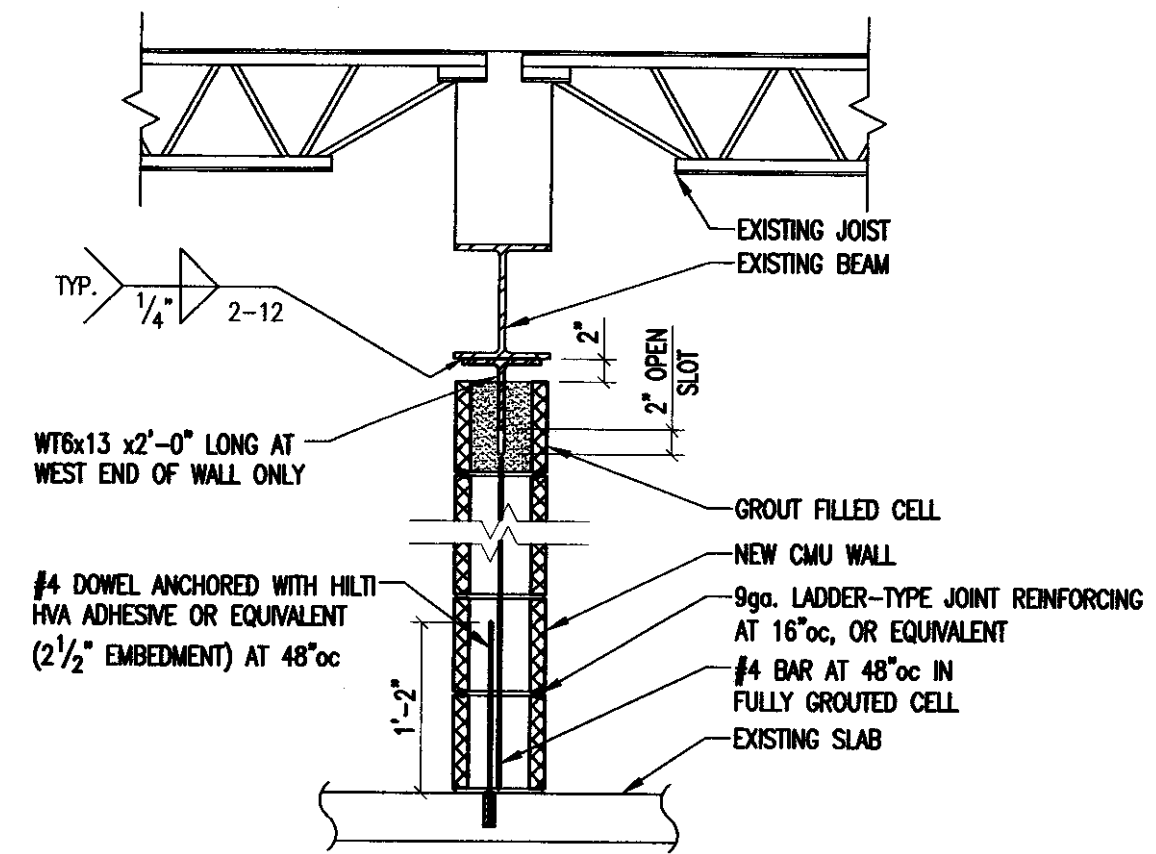
3/4"=1'-0"

SEE ARCHITECTURAL DRAWINGS FOR HEIGHT OF LINTELS



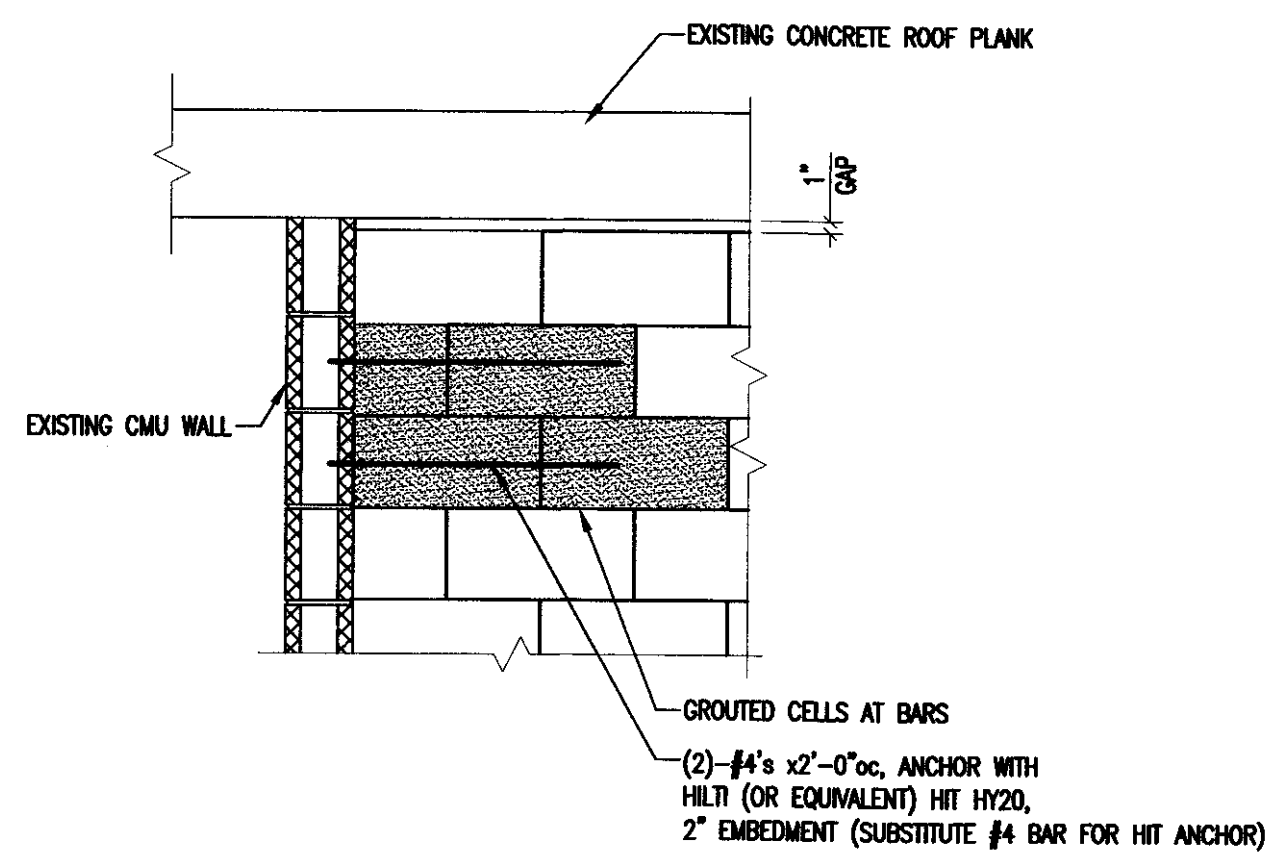
SECTION

1 1/2"=1'-0"



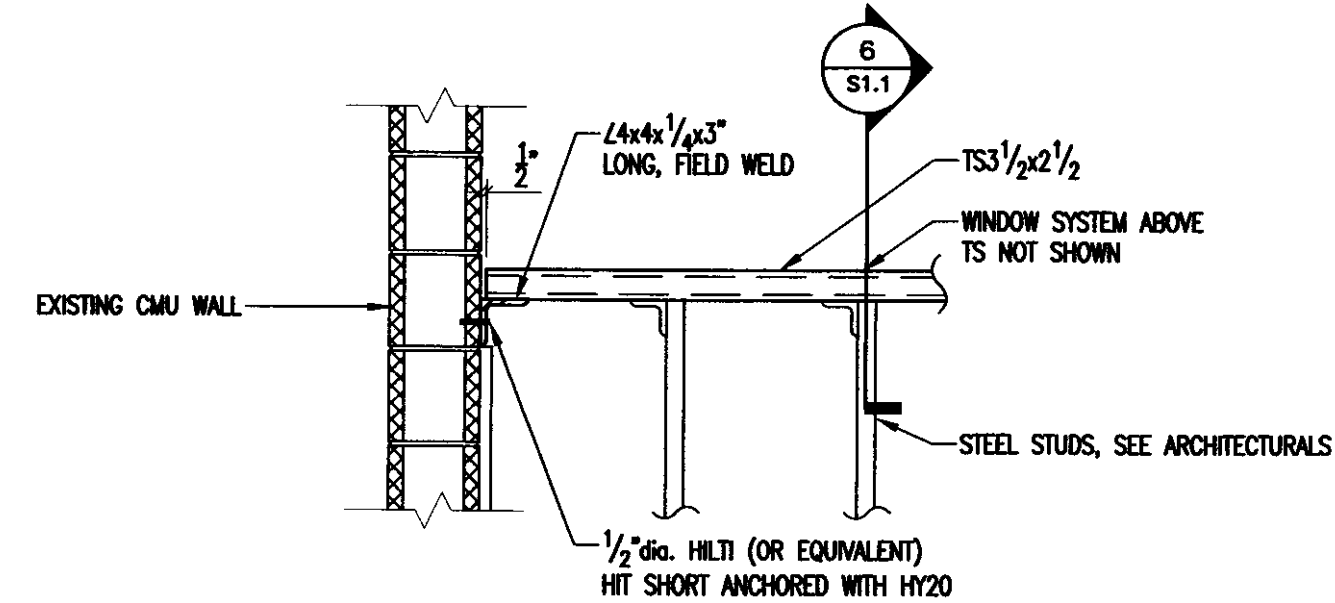
SECTION

3/4"=1'-0"



SECTION

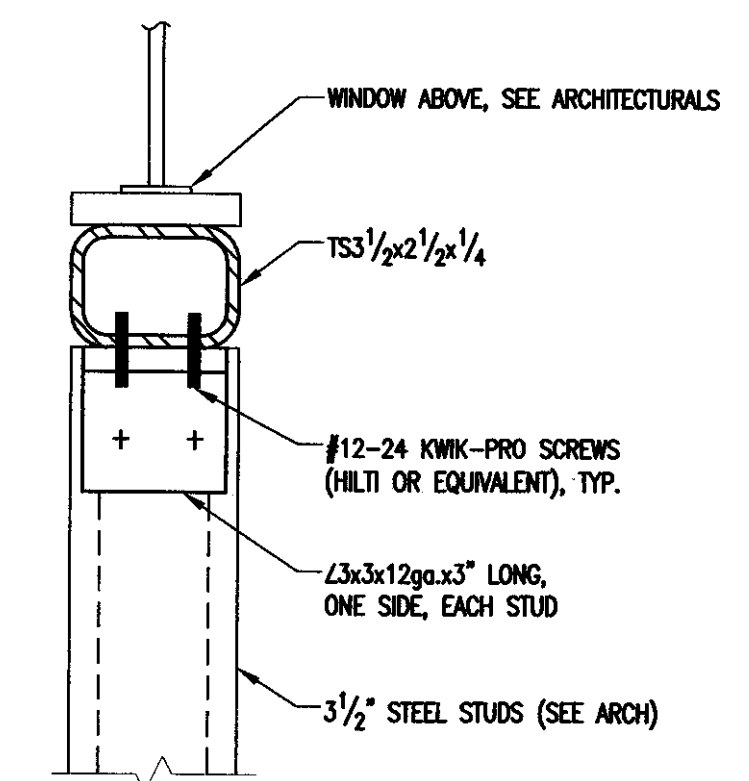
3/4"=1'-0"



SECTION

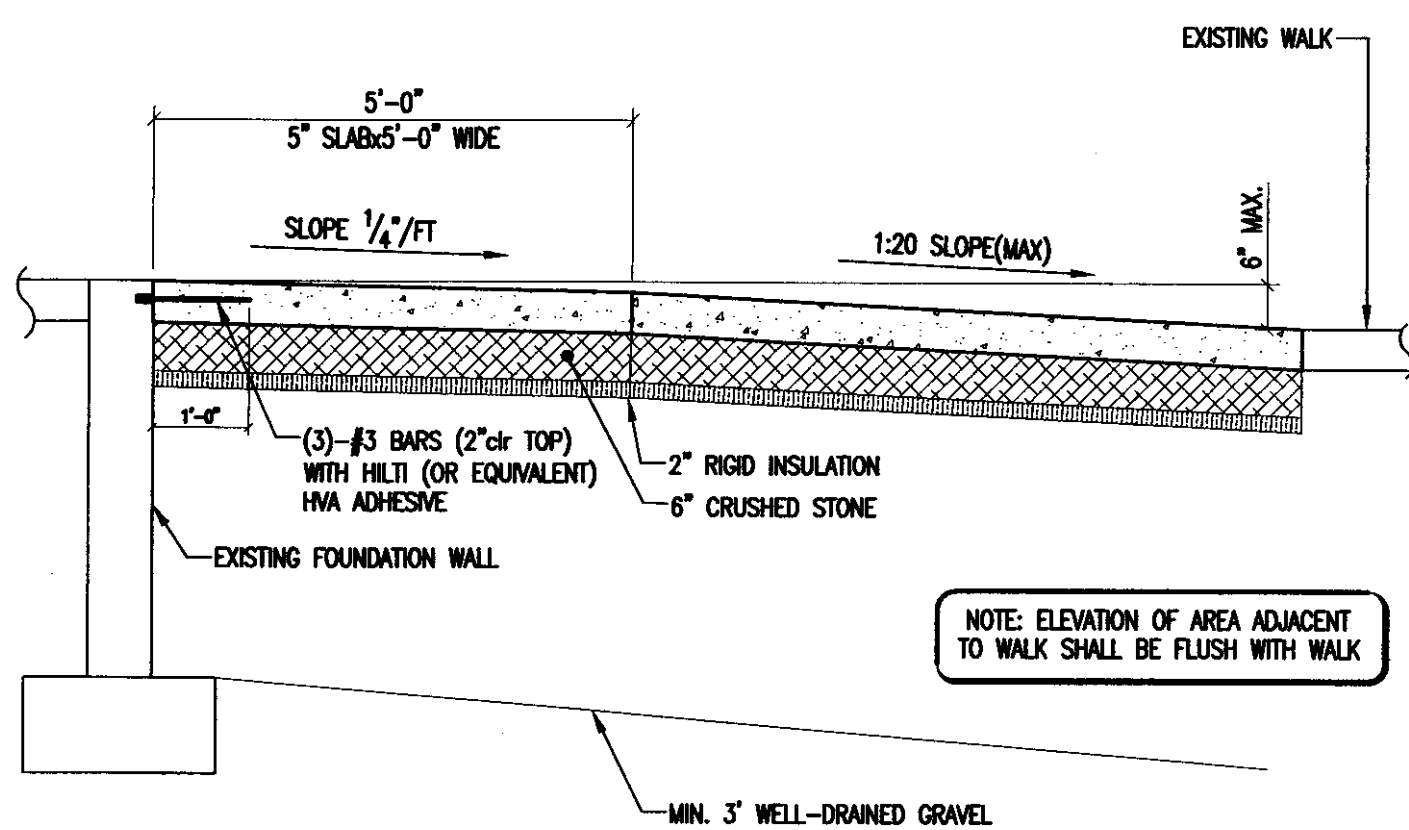
3/4"=1'-0"

SEE ARCHITECTURAL DRAWINGS FOR ADDITIONAL INFORMATION



SECTION

3"=1'-0"

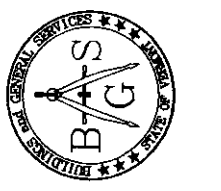
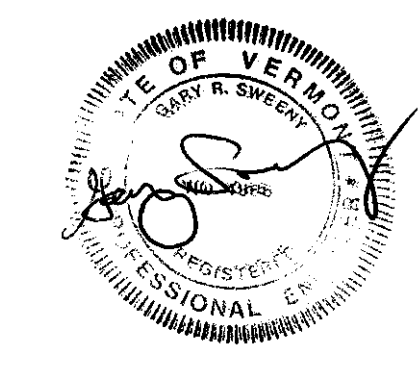


SECTION

1/2"=1'-0"

NOTE: CONCRETE SHALL MEET THE REQUIREMENTS OF ACI 318-95, AND SHALL HAVE 4,000 PSI COMPRESSIVE STRENGTH AT 28 DAYS. PROVIDE 5-7% AIR ENTRAINMENT, AND SLUMP SHALL NOT EXCEED 4" BEFORE THE ADDITION OF WATER REDUCING ADMIXTURE.

FOR REVIEW ONLY
NOT FOR CONSTRUCTION
AUGUST 12, 2003



Revisions:

Job Number: 03558

File Name: 03558 S1-1.DWG

Scale: As Noted

Date: March, 2005