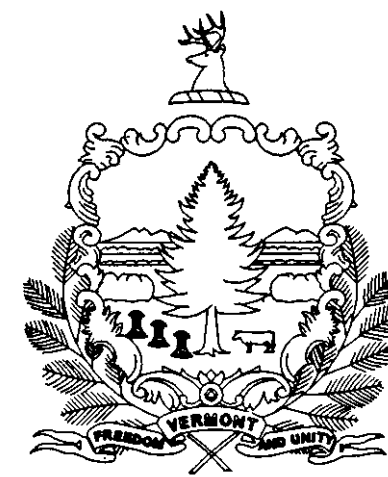


INDEX OF SHEETS

TITLE SHEET	1
QUANTITY SHEET, STANDARD SHEETS	2
TYPICAL SECTIONS	3
GENERAL PLAN	4
LAYOUT & MARKING PLAN	5
PHASE I- GRADING PLAN	6
EXTENDED DETENTION BASIN GRADING PLAN	7
PROFILES	8
MISC.ELLANEOUS DETAILS	9
DRAINAGE TABLES	10
EXTENDED DETENTION BASIN DETAILS	11
EROSION CONTROL PLAN	12
FULL FUTURE IMPROVEMENTS	13

FOR STANDARD SHEETS, SEE SHEET 2

STATE OF VERMONT AGENCY OF TRANSPORTATION

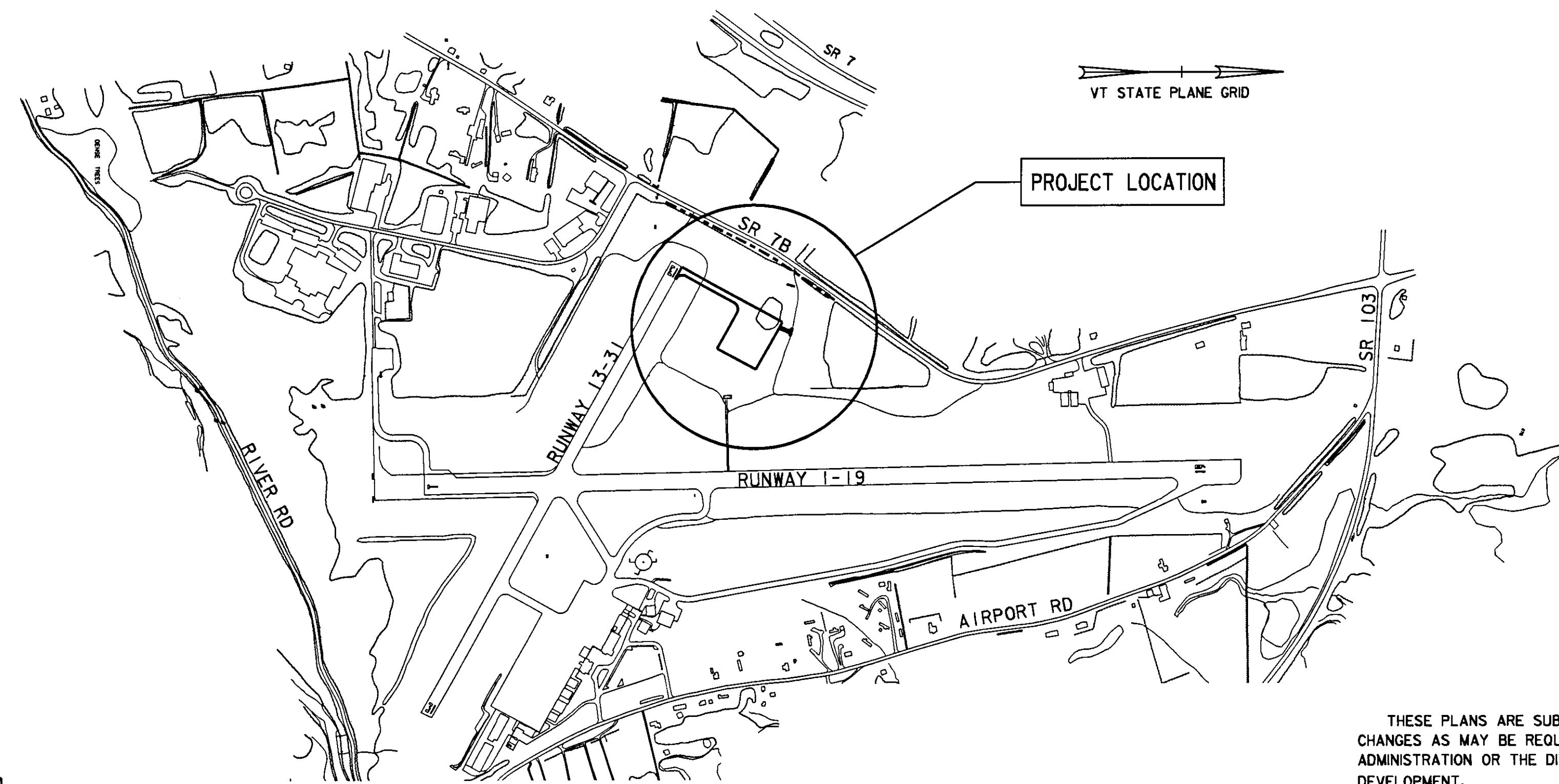
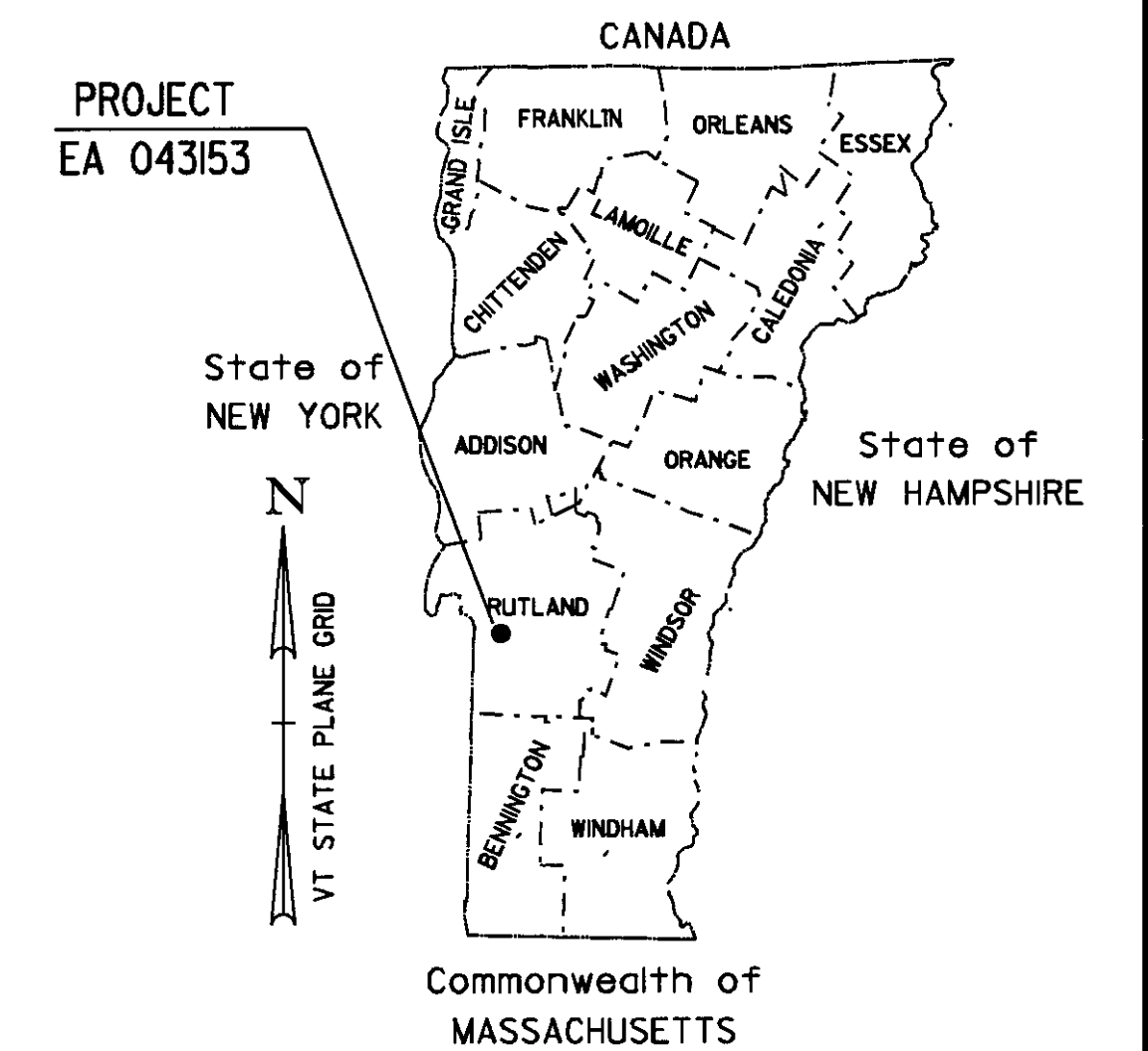


PROPOSED IMPROVEMENT RUTLAND STATE AIRPORT CLARENDON, VT.

EA 043153

PROJECT IS LOCATED AT THE RUTLAND STATE AIRPORT IN THE TOWN OF CLARENDON, VERMONT
TAXIWAY - 700 FEET X 35 FEET
APRON 78,350 S.F.

WORK TO BE PERFORMED UNDER THIS PROJECT INCLUDES THE CONSTRUCTION OF A STUB
TAXIWAY AND AN AIRCRAFT APRON WITH NEW ASPHALT, SUBBASE, DRAINAGE, APRON AND
TAXIWAY PAVEMENT MARKINGS, AIRFIELD LIGHTING, AND EARTHWORK



CONVENTIONAL SYMBOLS

COUNTY LINE		COUNTY LINE	
TOWN LINE		TOWN LINE	
LIMITS OF ACCESS		LIMITS OF ACCESS	
POINT OF ACCESS		POINT OF ACCESS	
FENCE LINE		FENCE LINE	
STONE WALL		STONE WALL	
TRAVELED WAY		TRAVELED WAY	
GUARD RAIL		GUARD RAIL	
RAILROAD		RAILROAD	
SURVEY LINE		SURVEY LINE	
CULVERT		CULVERT	
POWER POLE		POWER POLE	
TELEPHONE POLE		TELEPHONE POLE	
TREES		TREES	
CONTROL OF ACCESS		CONTROL OF ACCESS	
PROPERTY LINE		PROPERTY LINE	
R.O.W. TAKING LINE		R.O.W. TAKING LINE	
SLOPE RIGHTS		SLOPE RIGHTS	
TOP OF CUT		TOP OF CUT	
TOE OF SLOPE		TOE OF SLOPE	

SURVEYED BY : EIV TECHNICAL SERVICES, LLC
SURVEYED DATE : APRIL, 2000

DATUM
VERTICAL NAVD 88
HORIZONTAL NAD 83 (96)



McFARLAND-JOHNSON, INC
BINGHAMTON, NEW YORK

THESE PLANS ARE SUBJECT TO SUCH ENGINEERING CHANGES AS MAY BE REQUIRED BY THE FEDERAL HIGHWAY ADMINISTRATION OR THE DIRECTOR OF PROJECT DEVELOPMENT.

CONSTRUCTION IS TO BE CARRIED ON IN ACCORDANCE WITH THESE PLANS AND THE STANDARD SPECIFICATIONS FOR CONSTRUCTION DATED 1990, AS APPROVED BY THE FEDERAL HIGHWAY ADMINISTRATION ON MARCH 15, 1990 FOR USE ON THIS PROJECT, INCLUDING ALL SUBSEQUENT REVISIONS AND SUCH REVISED SPECIFICATIONS AND SPECIAL PROVISIONS AS ARE INCORPORATED IN THESE PLANS.

DIRECTOR OF PROJECT DEVELOPMENT

APPROVED _____ DATE _____

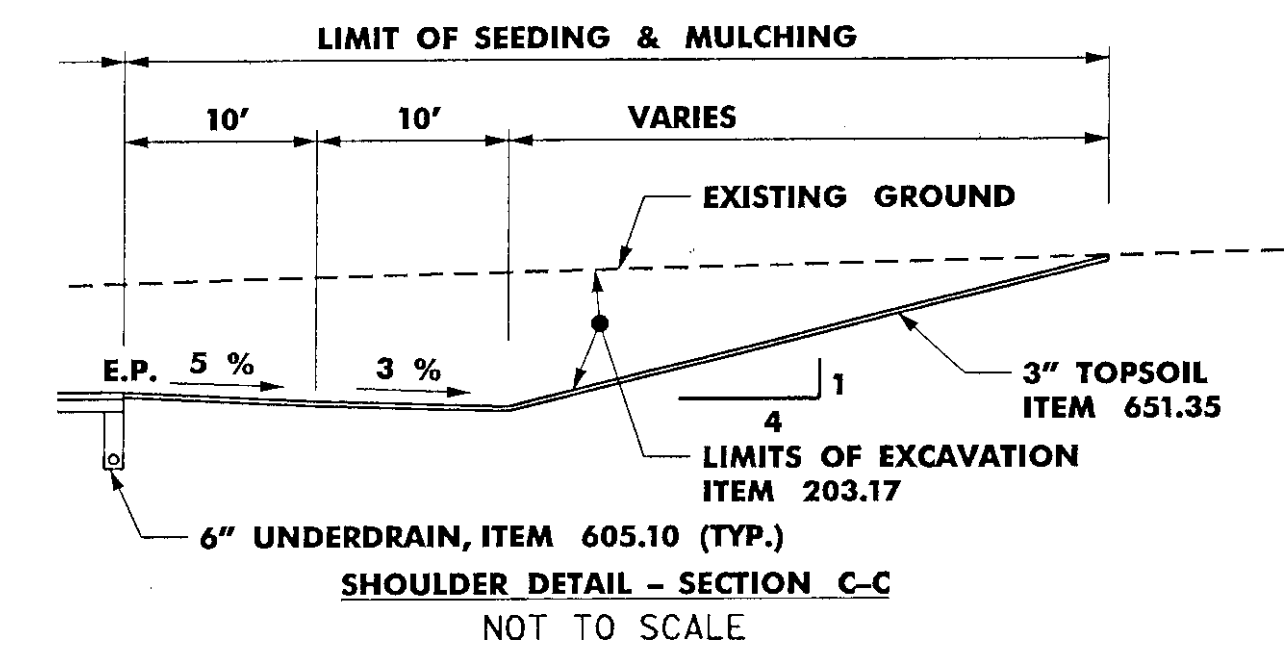
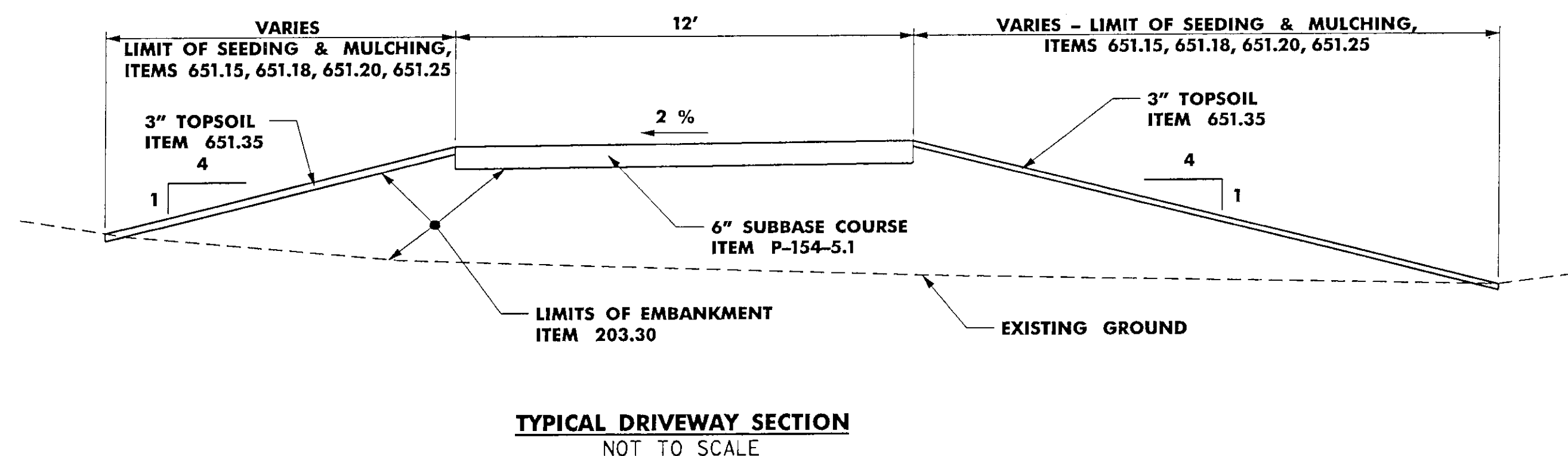
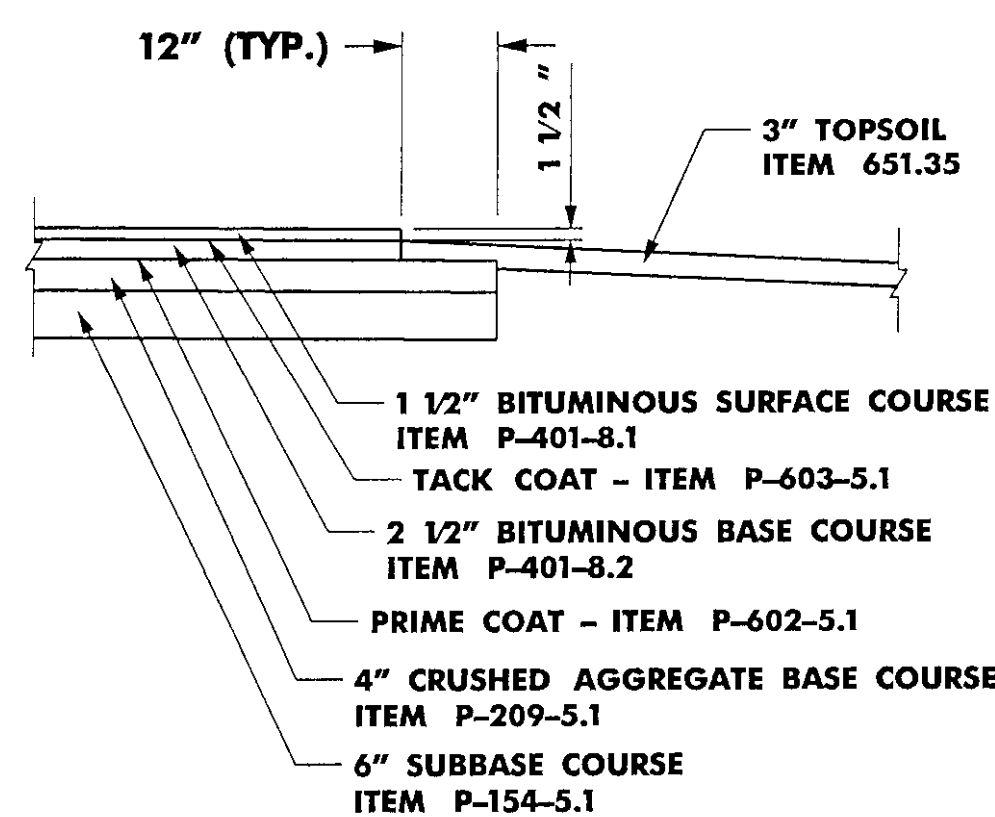
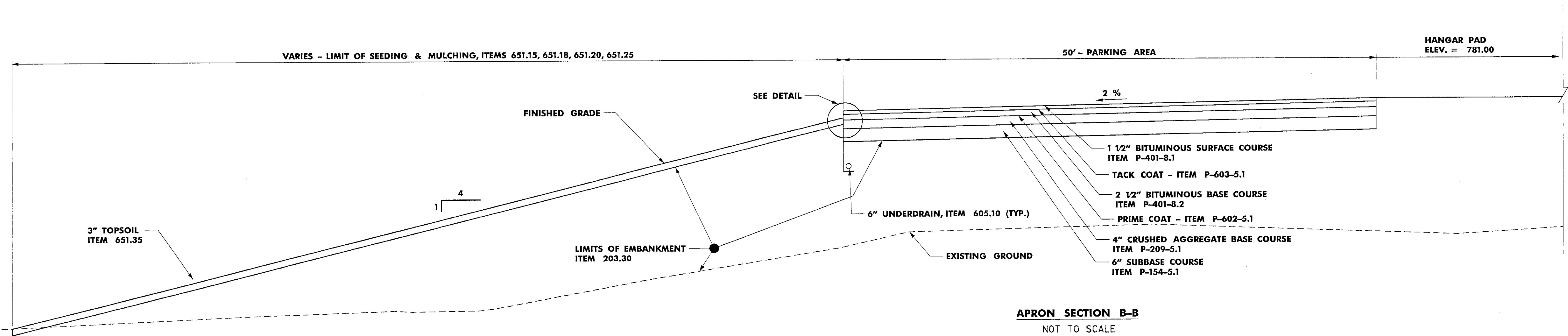
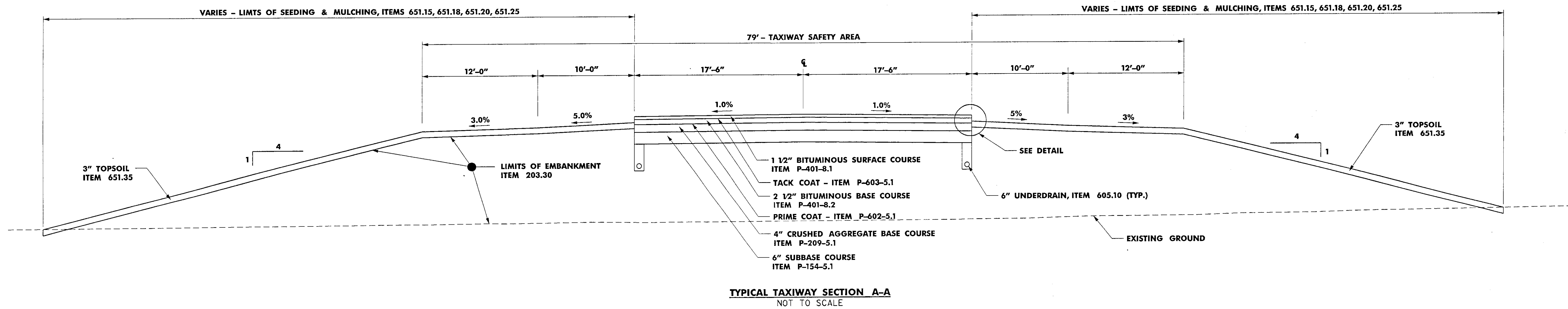
PROJECT MANAGER :

PROJECT NAME : RUTLAND AIRPORT APRON

PROJECT NUMBER : 15639.00

FILE NAME: TITLE3D.DGN

SHEET 1 OF 13 SHEETS

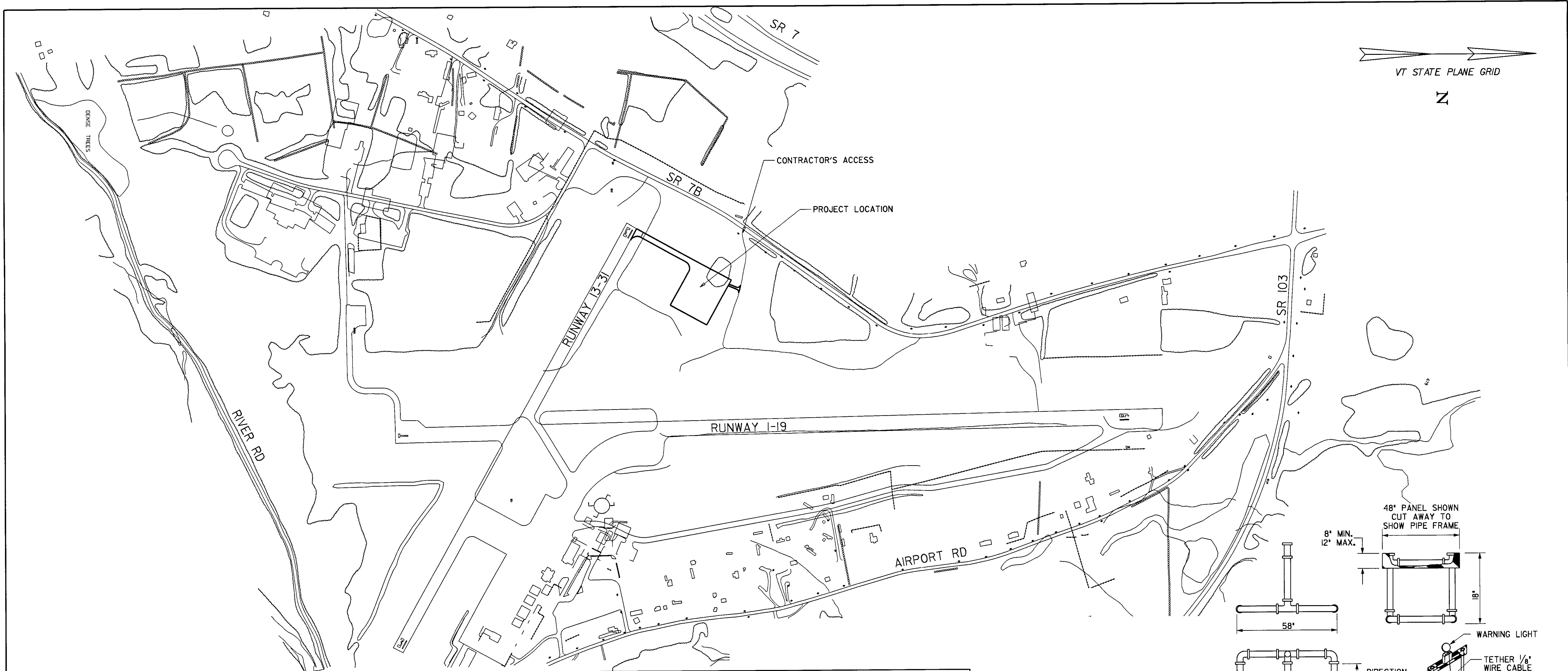


NOTE:
SEE SHEET 5 FOR
SECTION A-A, B-B,
AND C-C LOCATIONS.

PROJECT NAME: RUTLAND AIRPORT APRON
PROJECT NUMBER: 15639.00

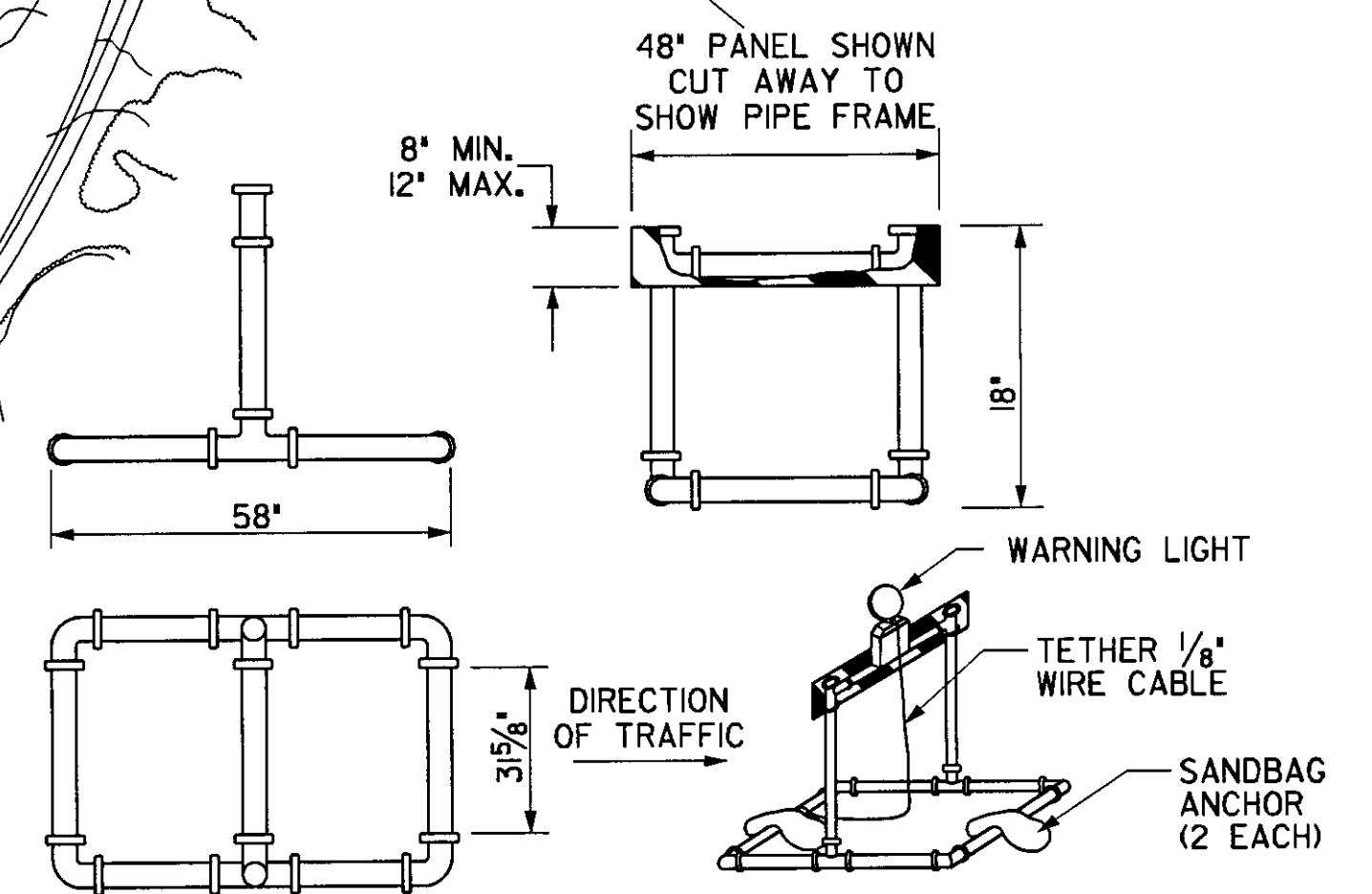
FILE NAME: Z15639TYP.DGN
PROJECT LEADER: E. NASSAR
DESIGNED BY: R. PERKINS
TYPICAL SECTIONS

PLOT DATE: 16-FEB-2001
DRAWN BY: R. PERKINS
CHECKED BY: E. NASSAR
SHEET 3 OF 12

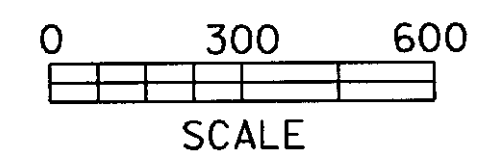


GENERAL NOTES

- I. CONTRACTOR SHALL COORDINATE ALL ACTIVITIES TO MINIMIZE INTERFERENCE WITH AIRPORT OPERATIONS.
2. POINTS OF ACCESS TO THE PROJECT OTHER THAN THOSE SHOWN ON THE GENERAL SITE PLAN SHALL BE AT THE DISCRETION OF THE OWNER.
3. THE BID PRICES SHALL INCLUDE ALL CONTRACTOR OPERATIONS AS SHOWN ON THE PLANS, ESTIMATE OF QUANTITIES AND IN THE PROJECT SPECIFICATIONS.
4. ALL WORK UNDER THIS CONTRACT SHALL BE CARRIED OUT IN STRICT CONFORMANCE WITH FAA AC 150/5370-2C 'OPERATIONAL SAFETY ON AIRPORTS DURING CONSTRUCTION' AND ALL RELATED ORDERS. COMPLIANCE SHALL BE AT NO COST TO THE OWNER.
5. THE INFORMATION SHOWN ON THE DRAWINGS CONCERNING TYPE AND LOCATION OF UNDERGROUND UTILITIES IS NOT GUARANTEED TO BE ACCURATE OR ALL INCLUSIVE. THE CONTRACTOR IS RESPONSIBLE FOR MAKING HIS OR HER OWN DETERMINATIONS AS TO THE TYPE AND LOCATION OF UNDERGROUND UTILITIES AS MAY BE NECESSARY TO AVOID DAMAGE THERETO. DAMAGE TO EXISTING UTILITIES CAUSED BY THE CONTRACTOR'S OPERATIONS SHALL BE PROMPTLY REPAIRED BY THE CONTRACTOR AT NO ADDITIONAL COST TO THE OWNER AND TO THE SATISFACTION OF THE OWNER AND ENGINEER.
6. THE CONTRACTOR SHALL CONDUCT HIS OR HER OPERATIONS SO AS TO AFFORD COMPLETE UNRESTRICTED ACCESS BY EMERGENCY PERSONNEL AND EQUIPMENT.
7. THE CONTRACTOR SHALL COORDINATE AND COOPERATE WITH OTHER CONTRACTORS AND AGENCIES WORKING ON THE AIRFIELD TO MINIMIZE DISRUPTIONS TO AIRPORT OPERATIONS.
8. THE CONTRACTOR SHALL CLEAN AND MAINTAIN EXISTING PAVEMENT SURFACES DURING HAULING OPERATIONS. DAMAGE TO PAVEMENT CAUSED BY CONSTRUCTION OPERATIONS SHALL BE REPAIRED BY THE CONTRACTOR AT NO COST TO THE OWNER.
9. PAYMENT FOR HAUL ROUTES, BARRICADES, FLAG PERSONS, RADIO TRANSCEIVERS, AIRFIELD LIGHTING MAINTENANCE AND CLEANING OF PAVEMENT AND RESTORATION OF HAUL ROUTES SHALL BE INCLUDED IN THE PRICE BID FOR ITEM 641J0 - TRAFFIC CONTROL (MOD.).
10. ALL RUNWAY SAFETY AREAS SHALL BE GRADED AND RESTORED PRIOR TO OPENING THE RUNWAY TO AIRCRAFT. CONTRACTOR SHALL MAINTAIN ALL AIRFIELD LIGHTING.
11. CONTRACTOR SHALL NOT PERFORM WORK WITHIN RUNWAY SAFETY AREAS OF ACTIVE RUNWAYS
12. REFER TO GRADING PLANS FOR LOCATION OF WORK AREA LIMITS.
13. CONTRACTOR SHALL NOT ALLOW CONSTRUCTION EQUIPMENT OR VEHICLES TO ENTER ACTIVE RUNWAYS.
14. TOPOGRAPHICAL SURVEY FOR THIS PROJECT WAS PERFORMED BY EIV TECHNICAL SERVICES, JUNE 2000.
15. THE CONTRACTOR SHALL CLOSE THE RUNWAY WHENEVER CONSTRUCTION OPERATIONS ARE CLOSER THAN 200 FEET FROM THE CENTERLINE OF RUNWAY 13-31. ALL TRENCHES INSIDE 200 FEET OF RUNWAY WILL BE FILLED IN ON AN AS YOU GO BASIS. THE LIMIT OF ANY OPEN TRENCHES WILL BE 200 FEET FROM RUNWAY.
16. THE CONTRACTOR SHALL TURN OFF THE RUNWAY LIGHTS, PAPI AND REILS AND BLOCK OUT RUNWAY NUMERALS 13 & 31 AS PER STD. SH. AP-10 FOR RUNWAY 13-31 WHEN THE RUNWAY IS TO BE CLOSED. IF RUNWAY CLOSURE IS ANTICIPATED OVERNIGHT, UNUSABLE OR CLOSED RUNWAY LIGHTS WILL BE DISABLED AND TAGGED OUT.
17. THE CONTRACTOR SHALL ACCOMPLISH ALL NECESSARY EARTHWORK AT THE APRON LOCATION PRIOR TO WORKING ON THE TAXIWAY AREA IN ORDER TO REDUCE THE CLOSURE TIME OF RUNWAY 13-31.
18. RADIO WATCH WILL BE REQUIRED WHEN JOINING THE STUB IN TAXIWAY TO THE END OF RUNWAY 13, EVEN WHEN RUNWAY 13/31 IS CLOSED.
19. CONES OR BARRICADES (LIGHTED AT NIGHT) SHOULD BE PLACED WHERE REQUIRED TO DIRECT AIRCRAFT AWAY FROM UNSTABLE OR HAZARDOUS AREAS OF THE AIRPORT. CONSTRUCTION EQUIPMENT LEFT AT NIGHT OUTSIDE THE ESTABLISHED STAGING AREA SHALL BE MARKED WITH AN AMBER FLASHING LIGHT.
20. GATES/ACCESS POINTS SHALL BE SECURED AND ALL DEBRIS ON THE AIRPORT SHALL BE CLEANED UP AT THE END OF EACH WORK DAY.



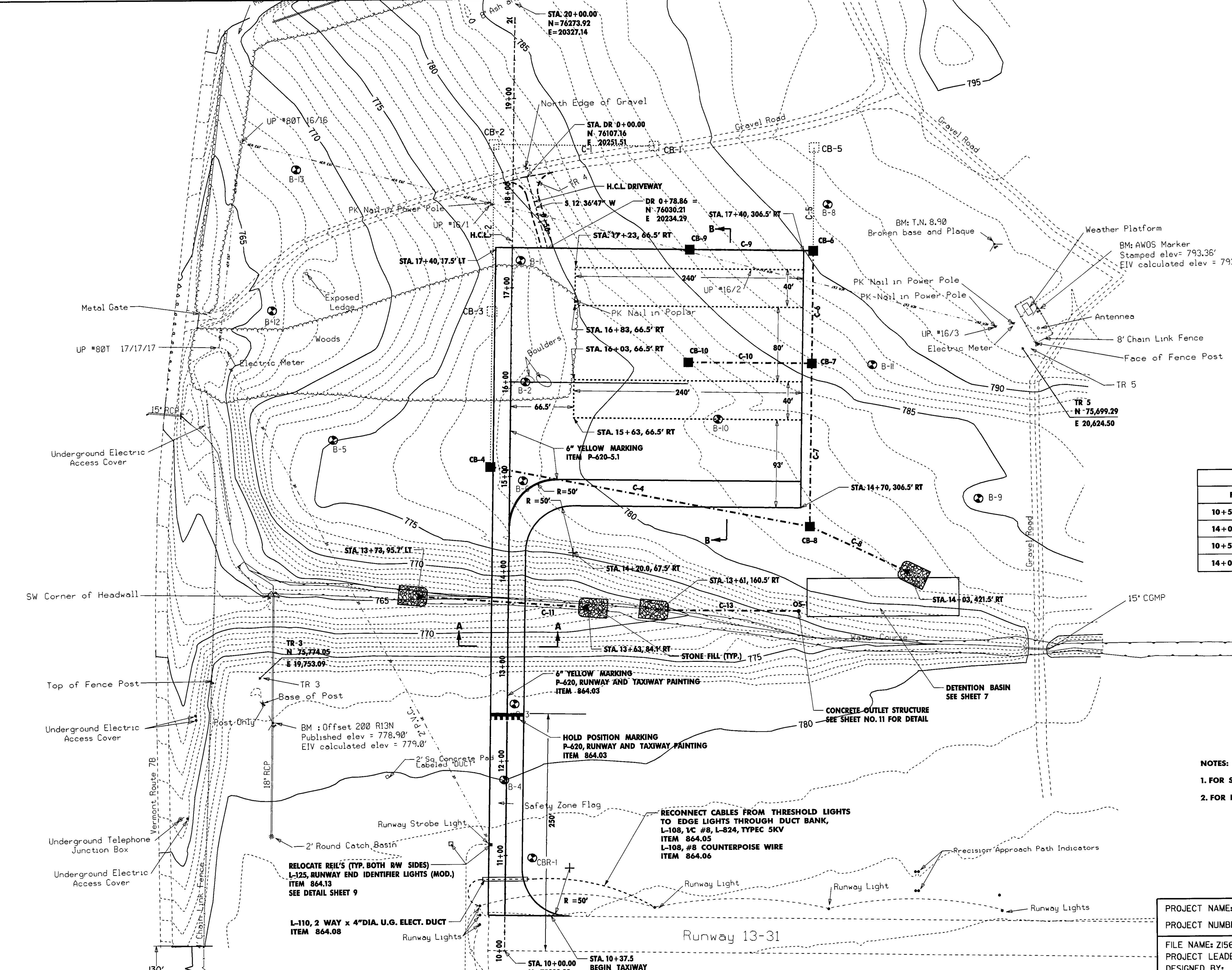
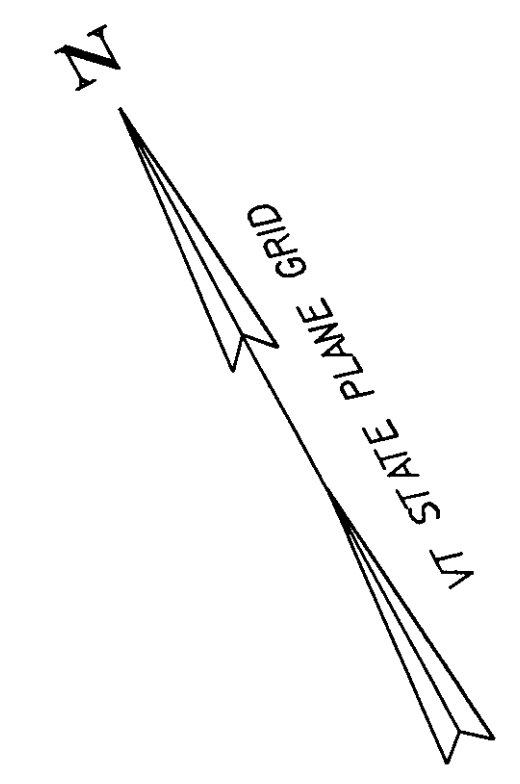
CONSTRUCTION BARRICADE
ITEM 641J0
NOT TO SCALE



PROJECT NAME: RUTLAND AIRPORT APRON
PROJECT NUMBER: 15639.00

FILE NAME: Z15639GEN.DGN
PROJECT LEADER: E. NASSAR
DESIGNED BY: R. PERKINS
GENERAL PLAN

PLOT DATE: 31-MAY-2001
DRAWN BY: R. PERKINS
CHECKED BY: E. NASSAR
SHEET 4 OF 13

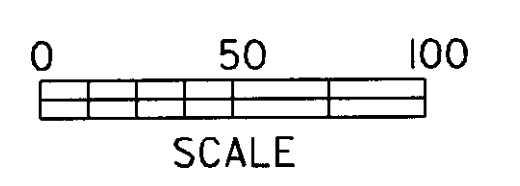


CB #	STATION	OFFSET	SIDE
CB-4	15+10	20.5	LEFT
CB-6	17+40	314.5	RIGHT
CB-7	16+33	316.5	RIGHT
CB-8	14+50	316.5	RIGHT
CB-9	17+40	175.9	RIGHT
CB-10	16+23	175.9	RIGHT
OS-1	13+61	305.5	RIGHT

FROM	TO	INVERT	INVERT
10+50, 17.5' LT	14+00, 17.5' LT	772.5	774.0
14+00, 17.5' LT	15+10, 17.5' LT	774.0	774.7
10+50, 17.5' RT	14+00, 17.5' RT	777.5	774.0
14+00, 17.5' RT	14+70, 306.5' RT	774.0	772.2

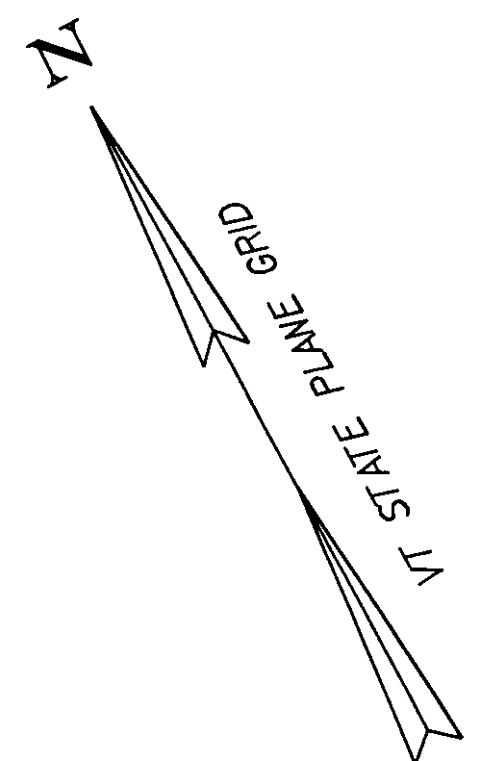
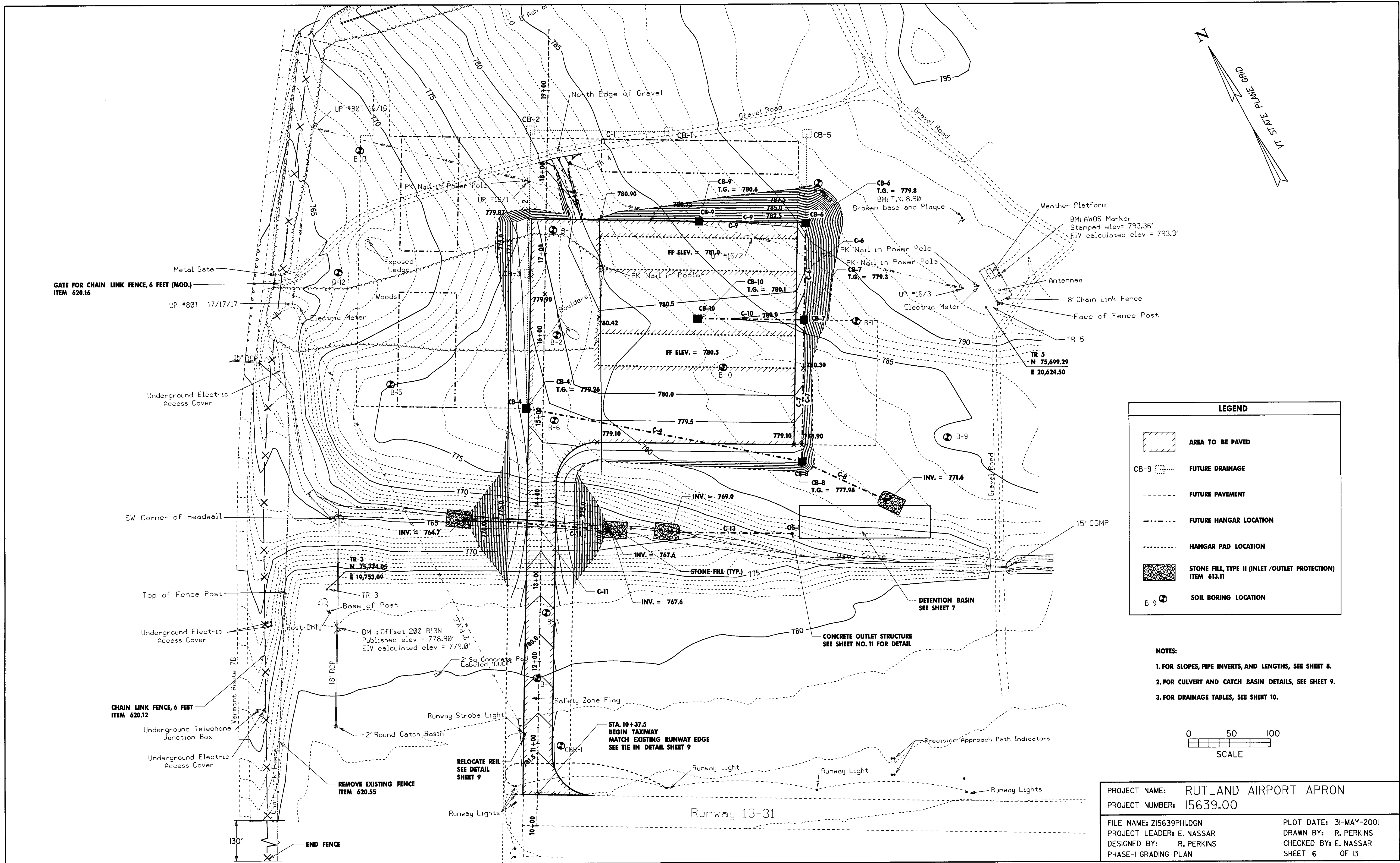
LEGEND
..... HANGAR PAD LOCATION TO BE CONSTRUCTED BY OTHERS

- NOTES:**
- FOR SECTIONS A-A AND B-B, SEE SHEET 3.
 - FOR DRAINAGE TABLES, SEE SHEET 10



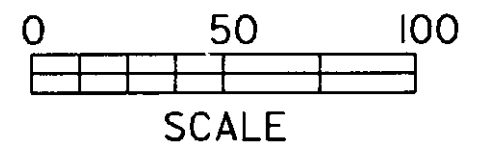
PROJECT NAME: RUTLAND AIRPORT APRON
PROJECT NUMBER: 15639.00
FILE NAME: Z15639LAY.DGN
PROJECT LEADER: E. NASSAR
DESIGNED BY: R. PERKINS
LAYOUT & MARKING PLAN
PLOT DATE: 31-MAY-2001
DRAWN BY: R. PERKINS
CHECKED BY: E. NASSAR
SHEET 5 OF 13

END FENCE

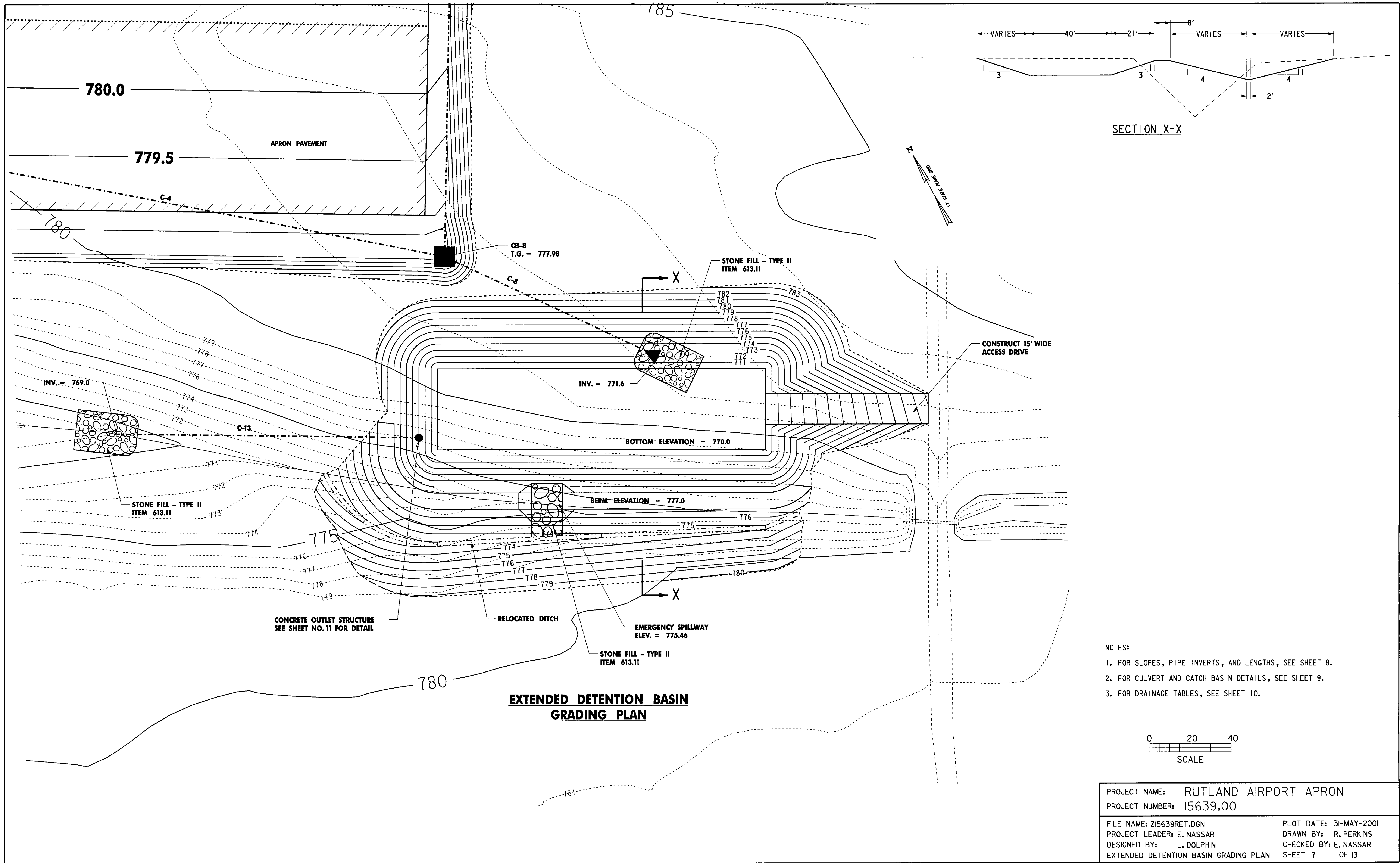


LEGEND	
	AREA TO BE PAVED
	FUTURE DRAINAGE
	FUTURE PAVEMENT
	FUTURE HANGAR LOCATION
	HANGAR PAD LOCATION
	STONE FILL, TYPE II (INLET / OUTLET PROTECTION) ITEM 613.11
	SOIL BORING LOCATION

- NOTES:**
1. FOR SLOPES, PIPE INVERTS, AND LENGTHS, SEE SHEET 8.
 2. FOR CULVERT AND CATCH BASIN DETAILS, SEE SHEET 9.
 3. FOR DRAINAGE TABLES, SEE SHEET 10.



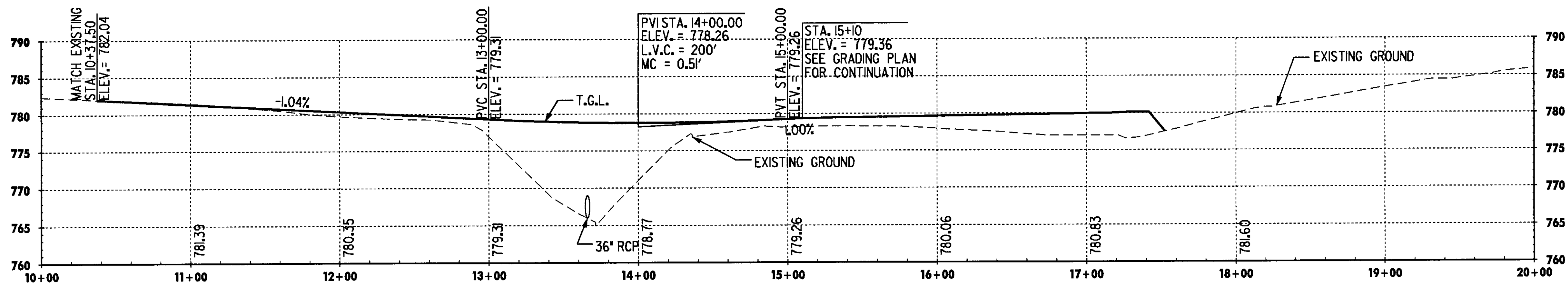
PROJECT NAME:	RUTLAND AIRPORT APRON
PROJECT NUMBER:	15639.00
FILE NAME:	Z15639PHI.DGN
PROJECT LEADER:	E. NASSAR
DESIGNED BY:	R. PERKINS
PHASE-I GRADING PLAN	
PLOT DATE:	31-MAY-2001
DRAWN BY:	R. PERKINS
CHECKED BY:	E. NASSAR
SHEET	6 OF 13



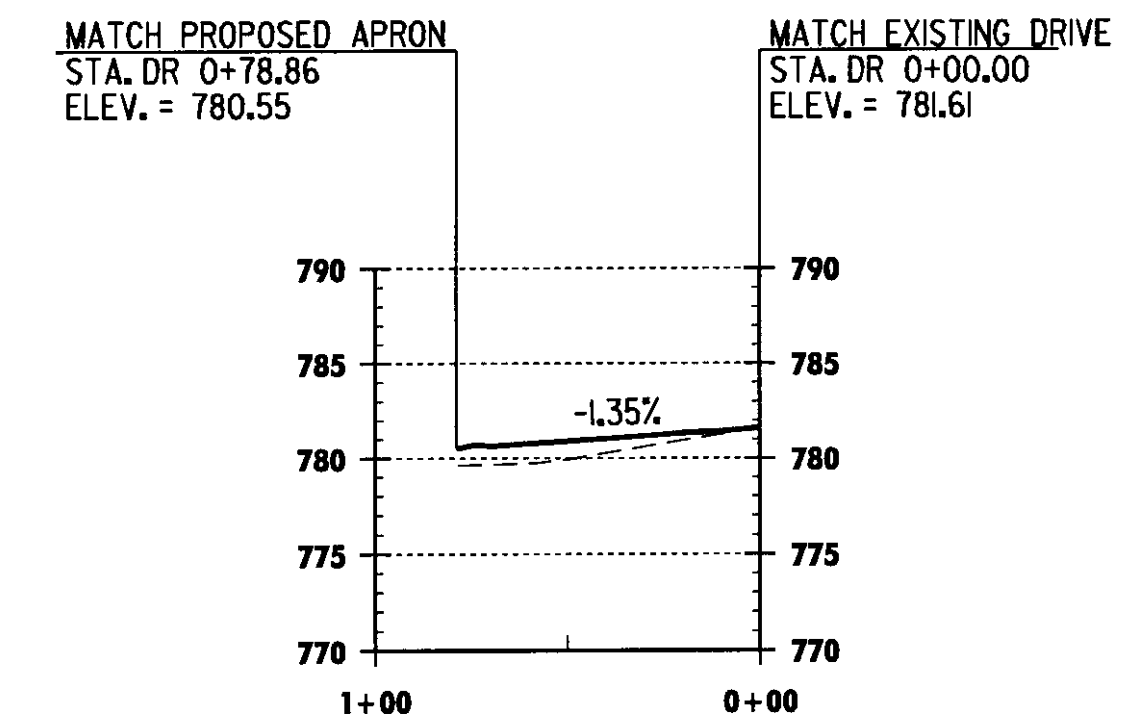
**EXTENDED DETENTION BASIN
GRADING PLAN**

- NOTES:
1. FOR SLOPES, PIPE INVERTS, AND LENGTHS, SEE SHEET 8.
 2. FOR CULVERT AND CATCH BASIN DETAILS, SEE SHEET 9.
 3. FOR DRAINAGE TABLES, SEE SHEET 10.

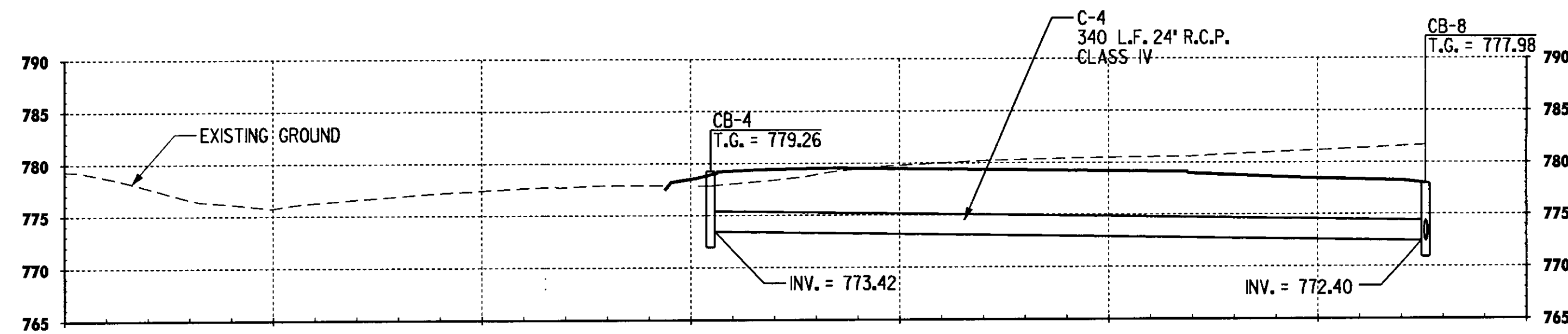
PROJECT NAME:	RUTLAND AIRPORT APRON
PROJECT NUMBER:	15639.00
FILE NAME:	Z15639RET.DGN
PROJECT LEADER:	E. NASSAR
DESIGNED BY:	L. DOLPHIN
EXTENDED DETENTION BASIN GRADING PLAN	PLOT DATE: 31-MAY-2001
	DRAWN BY: R. PERKINS
	CHECKED BY: E. NASSAR
	SHEET 7 OF 13



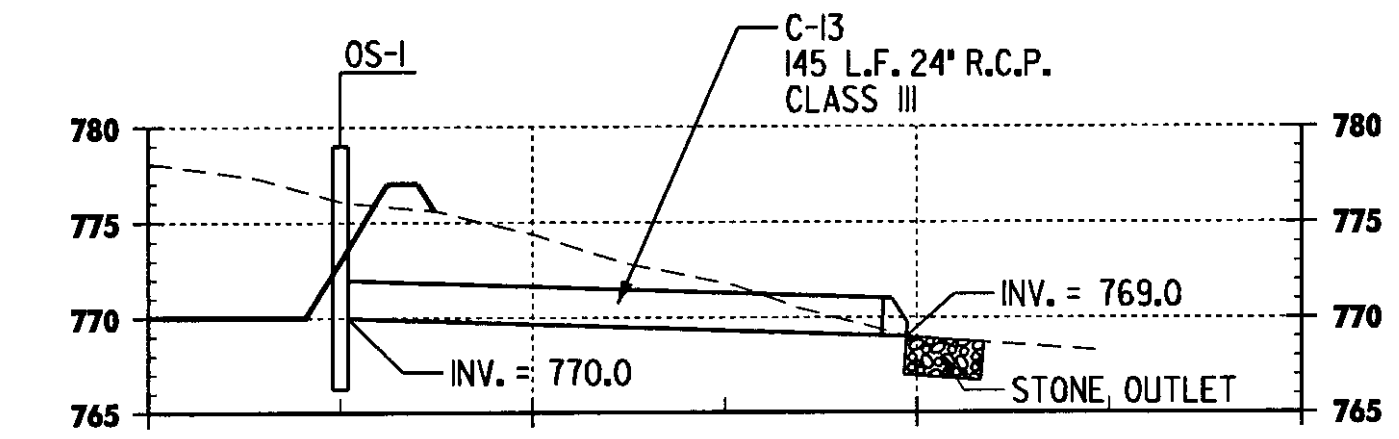
PROFILE ALONG STUB TAXIWAY



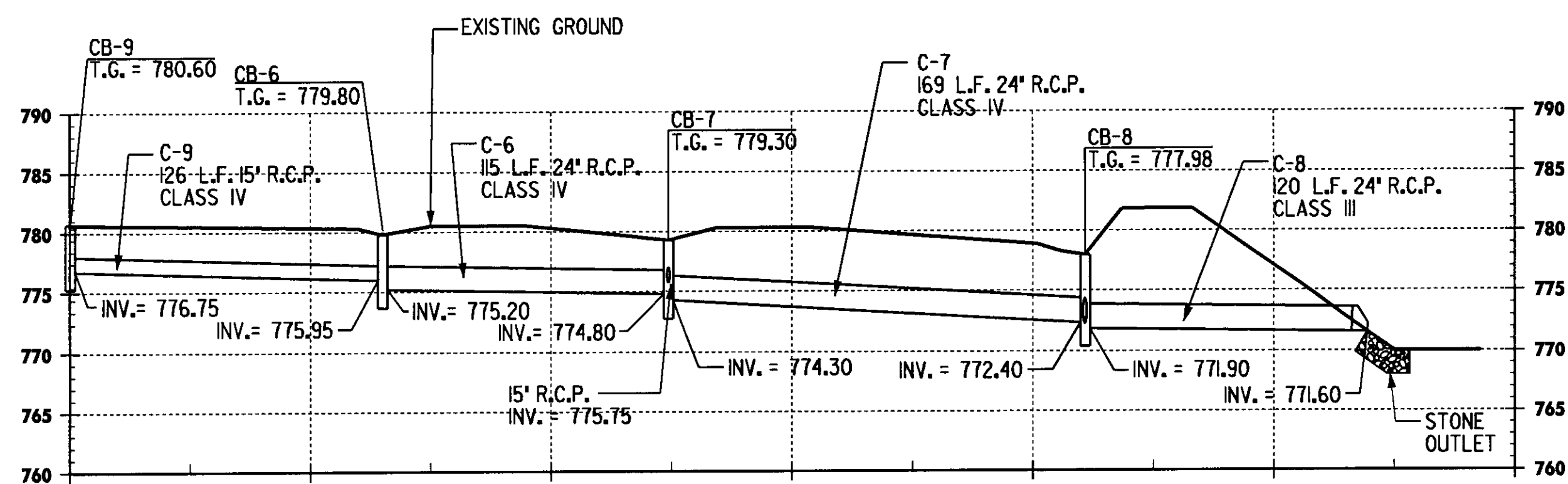
PROFILE ALONG PHASE 1 GRAVEL DRIVE



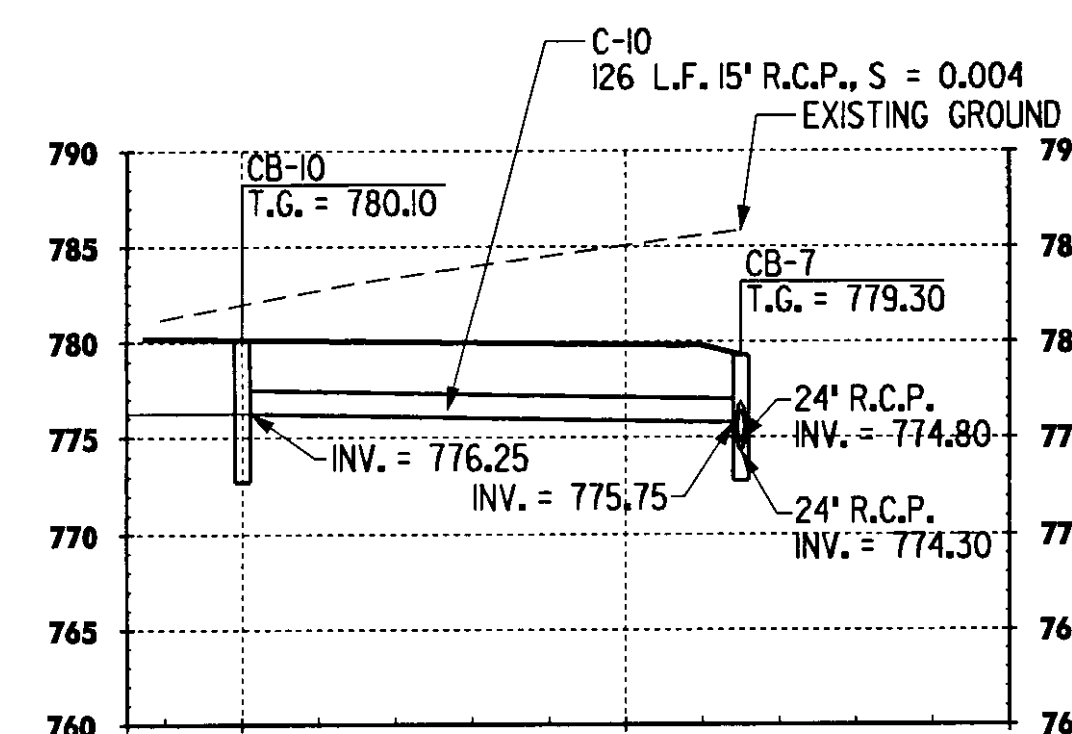
CULVERT PROFILE



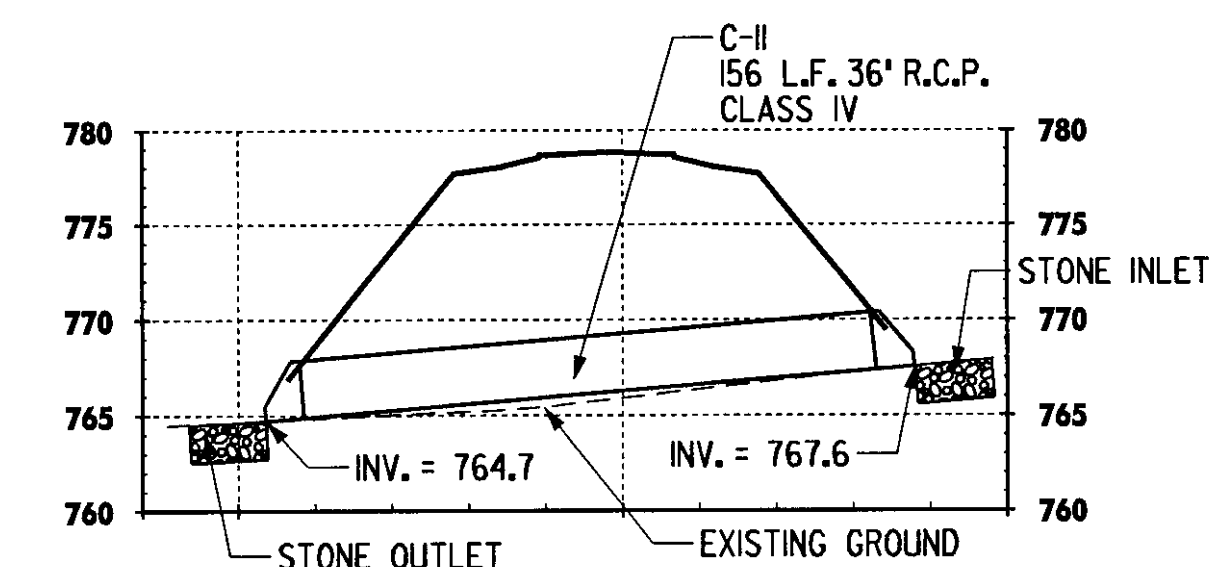
CULVERT PROFILE



CULVERT PROFILE

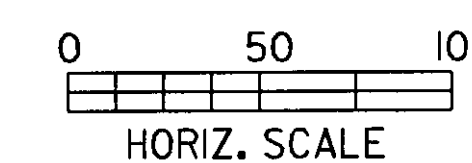
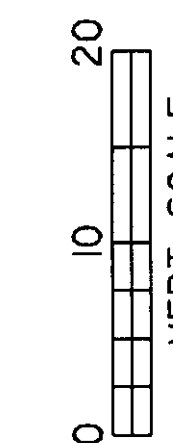


CULVERT PROFILE



CULVERT PROFILE

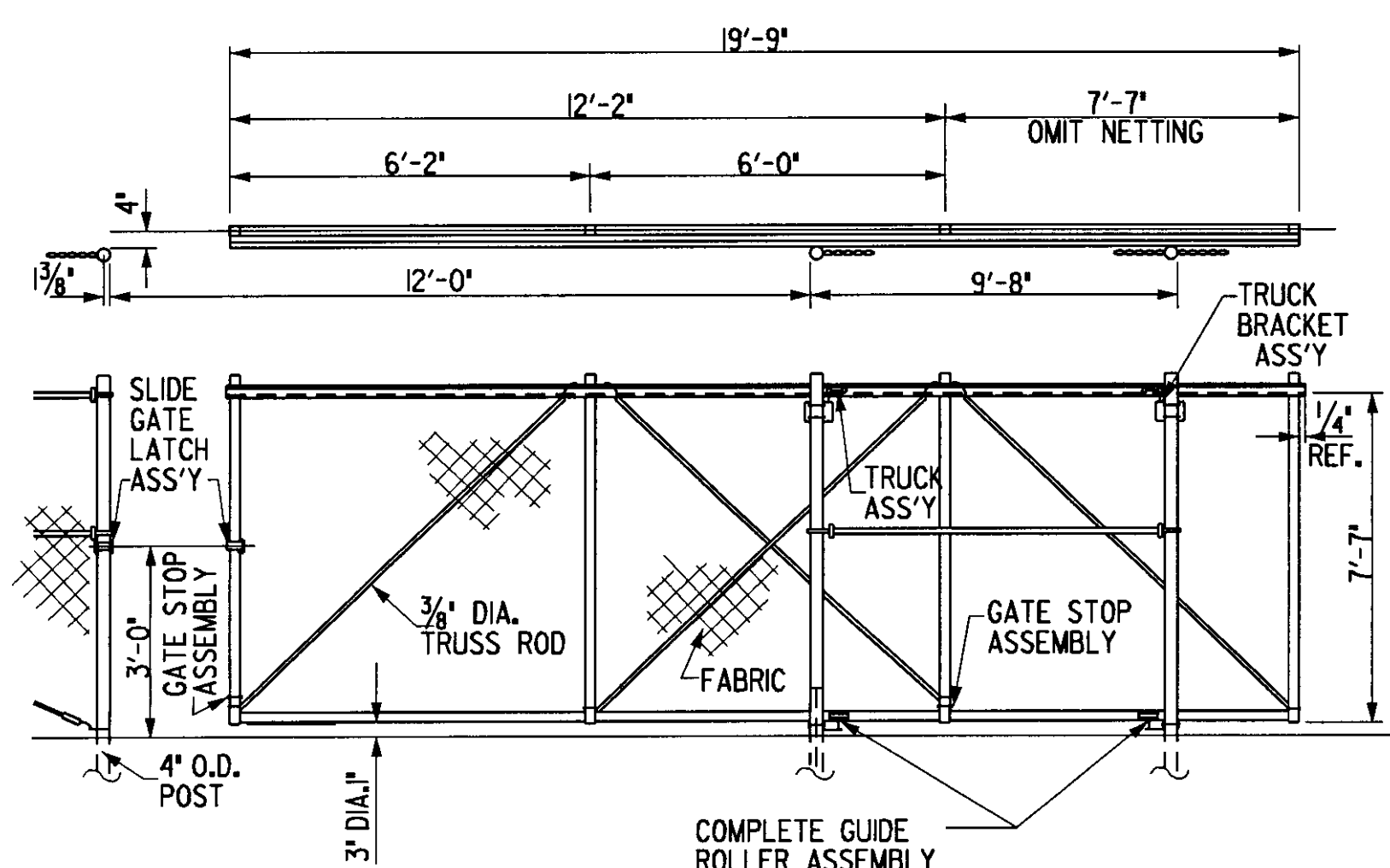
NOTE:
FOR DRAINAGE TABLES, SEE SHEET 10.



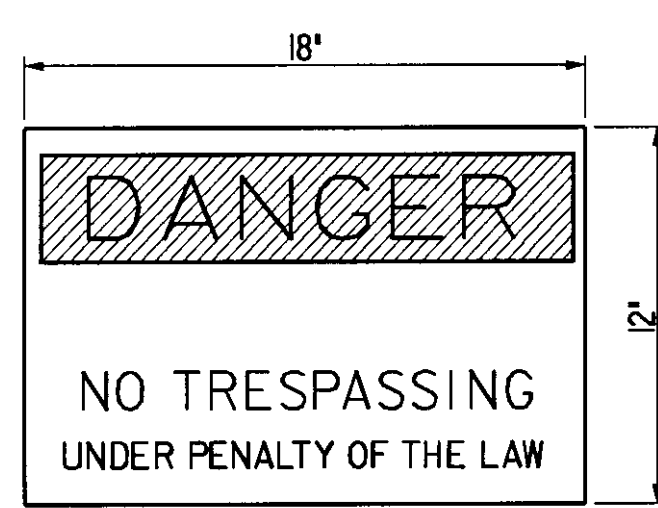
PROJECT NAME: RUTLAND AIRPORT APRON
PROJECT NUMBER: 15639.00

FILE NAME: Z15639PRO.DGN
PROJECT LEADER: E. NASSAR
DESIGNED BY: R. PERKINS
PROFILES

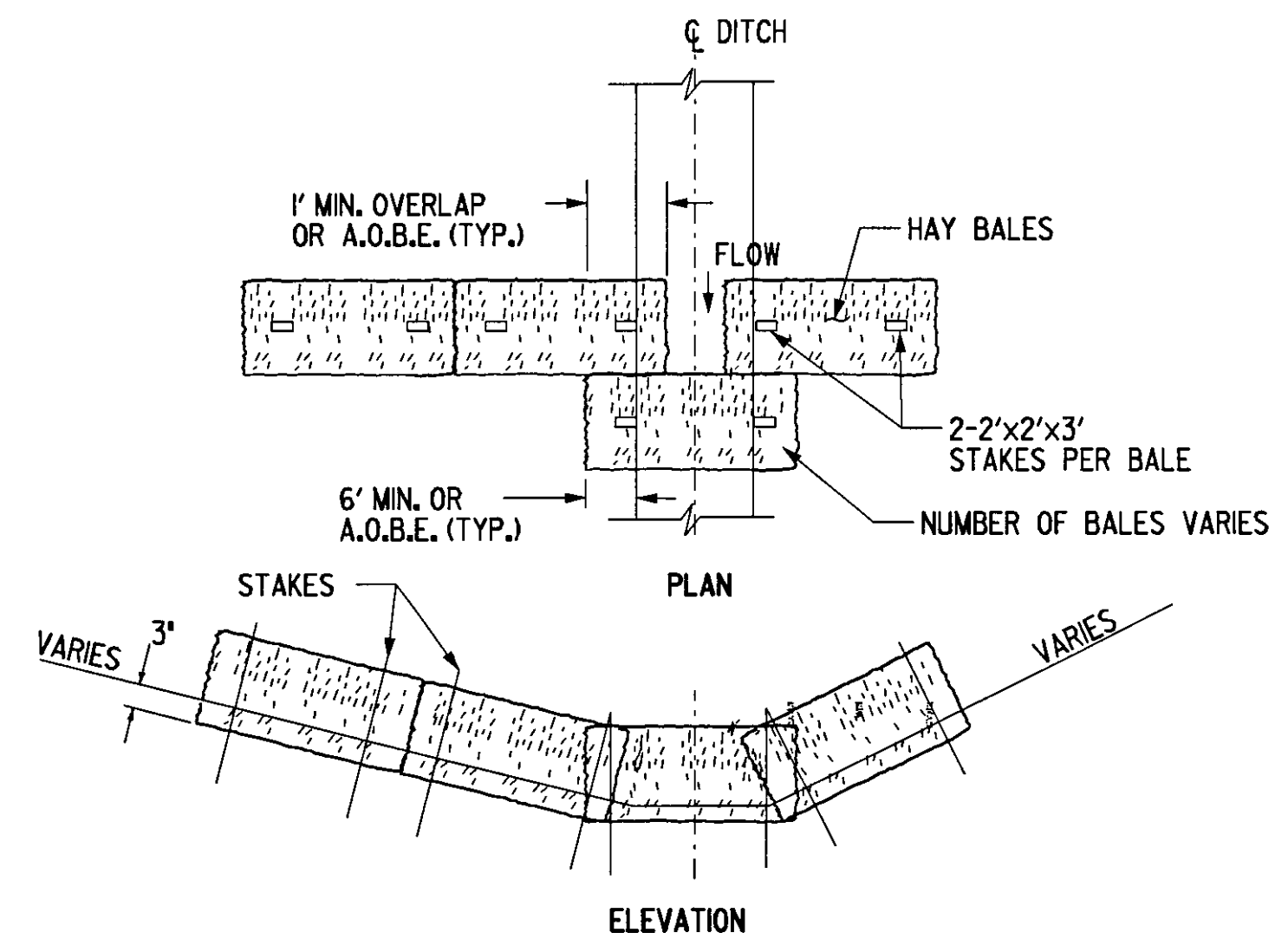
PLOT DATE: 31-MAY-2001
DRAWN BY: R. PERKINS
CHECKED BY: E. NASSAR
SHEET 8 OF 13



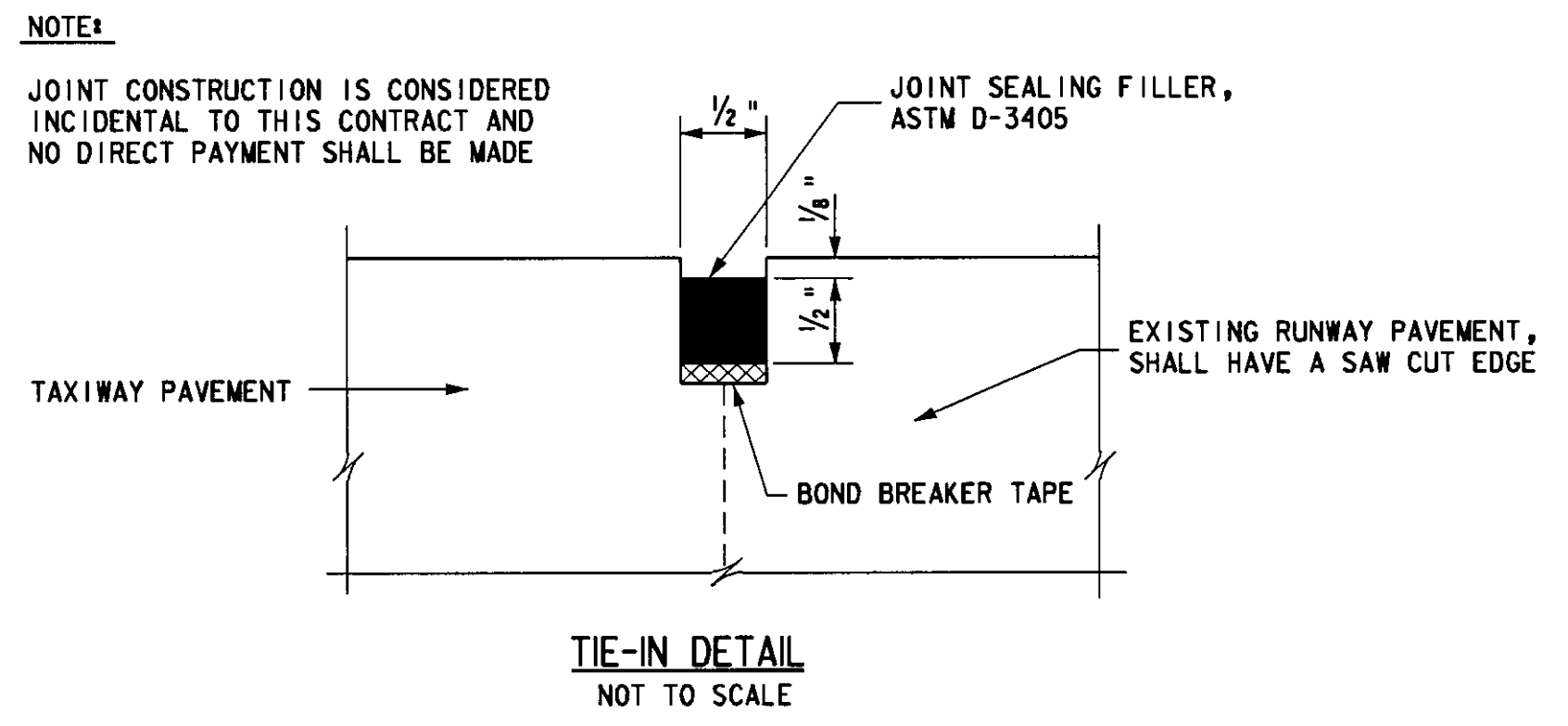
ALUMINUM CANTILEVERED SLIDE GATE
ITEM 620.16 (MOD.)
NOT TO SCALE



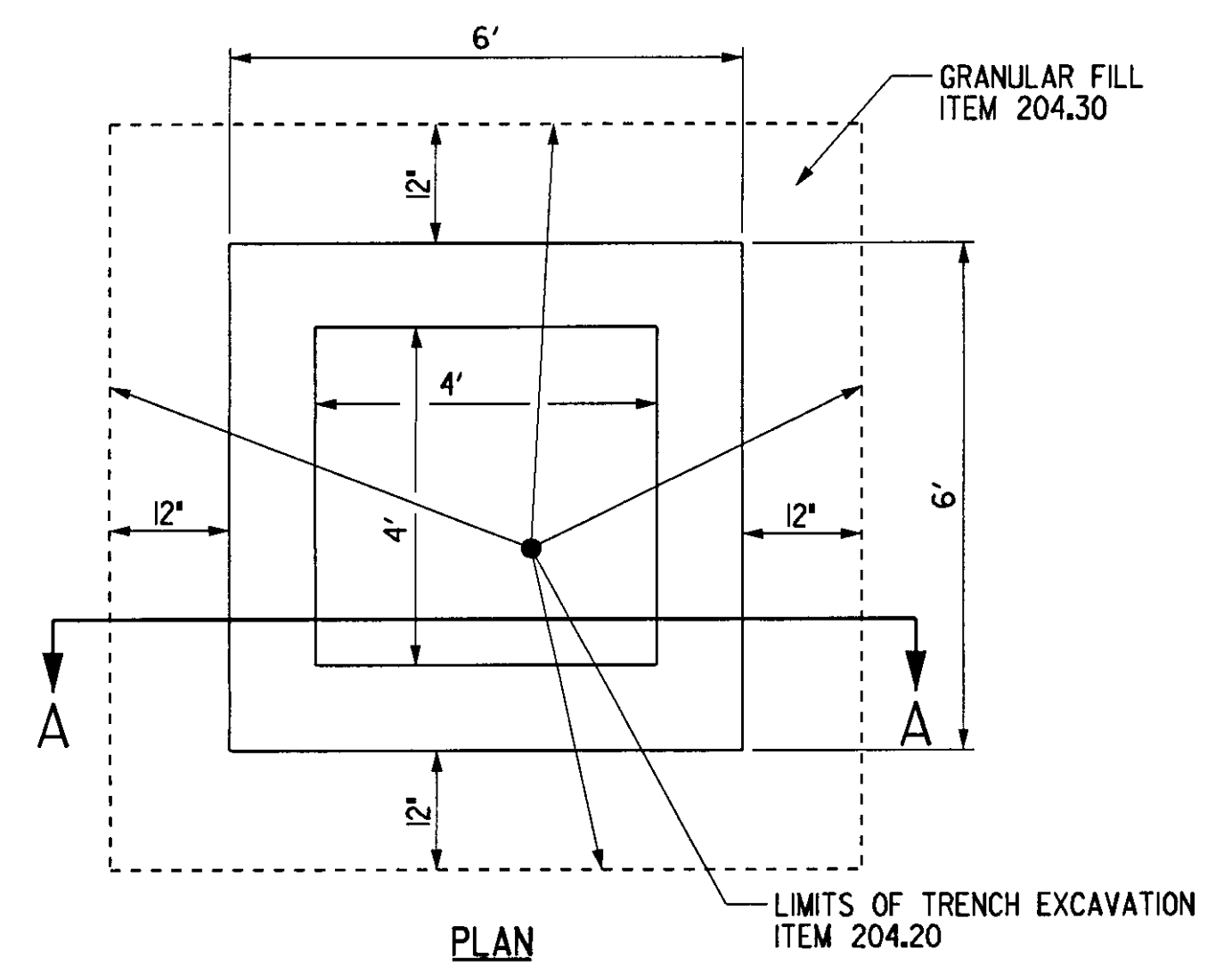
- WHITE BACKGROUND WITH BLACK LETTERS. SHADED AREA TO BE RED.
 - SIGN TO BE POSTED IN A VANDAL PROOF MANNER ON EACH GATE AND EVERY 200 FT (MAX.) ALONG INSTALLED FENCE OR AS DIRECTED BY THE ENGINEER, ITEM 620.12.
- SIGN FOR CHAIN-LINK GATE & FENCE**
ITEM 620.12
NOT TO SCALE



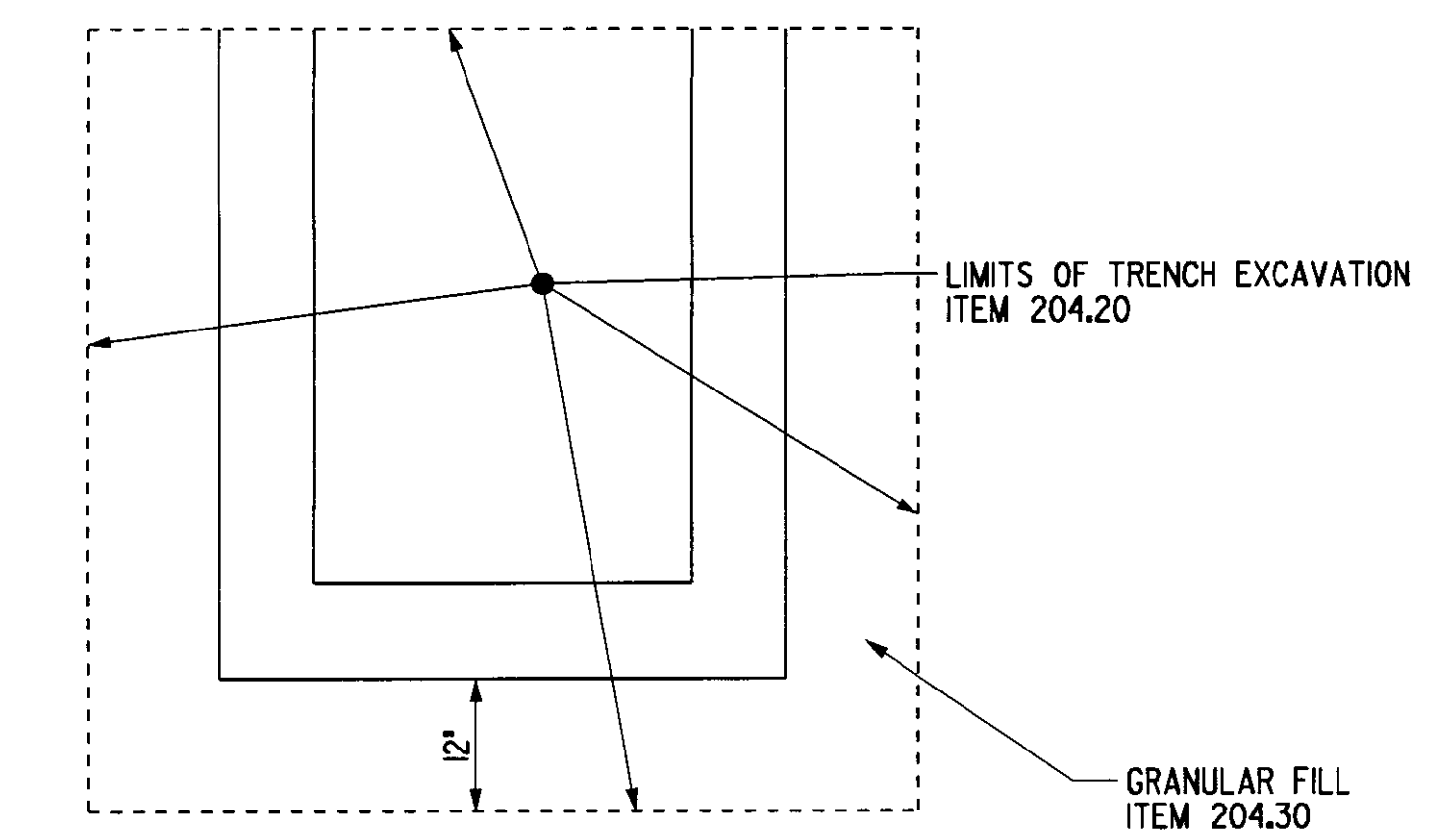
TYPE B-DITCH OR SWALE PROTECTION
ITEM 651.26 - NOT TO SCALE



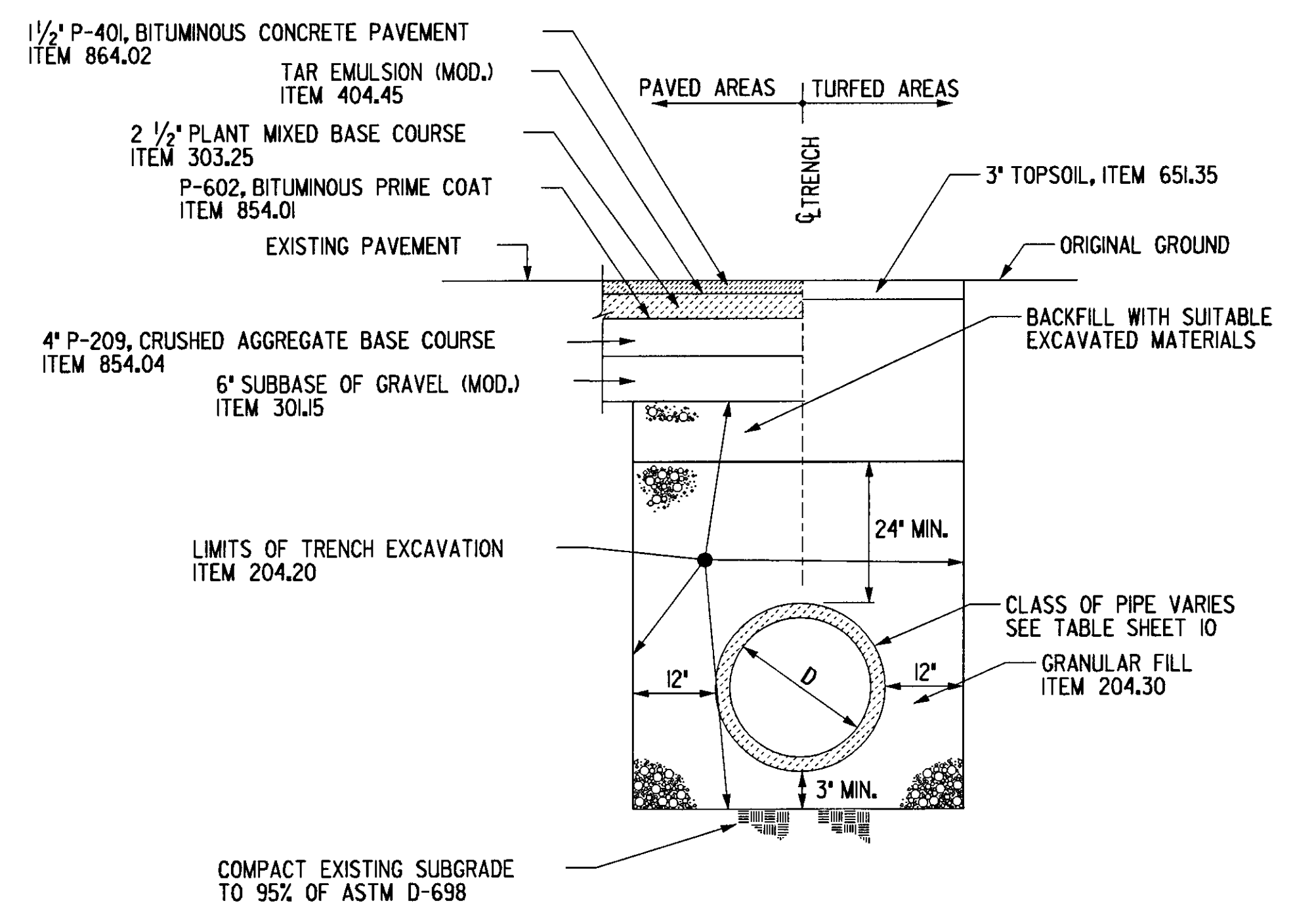
TIE-IN DETAIL
NOT TO SCALE



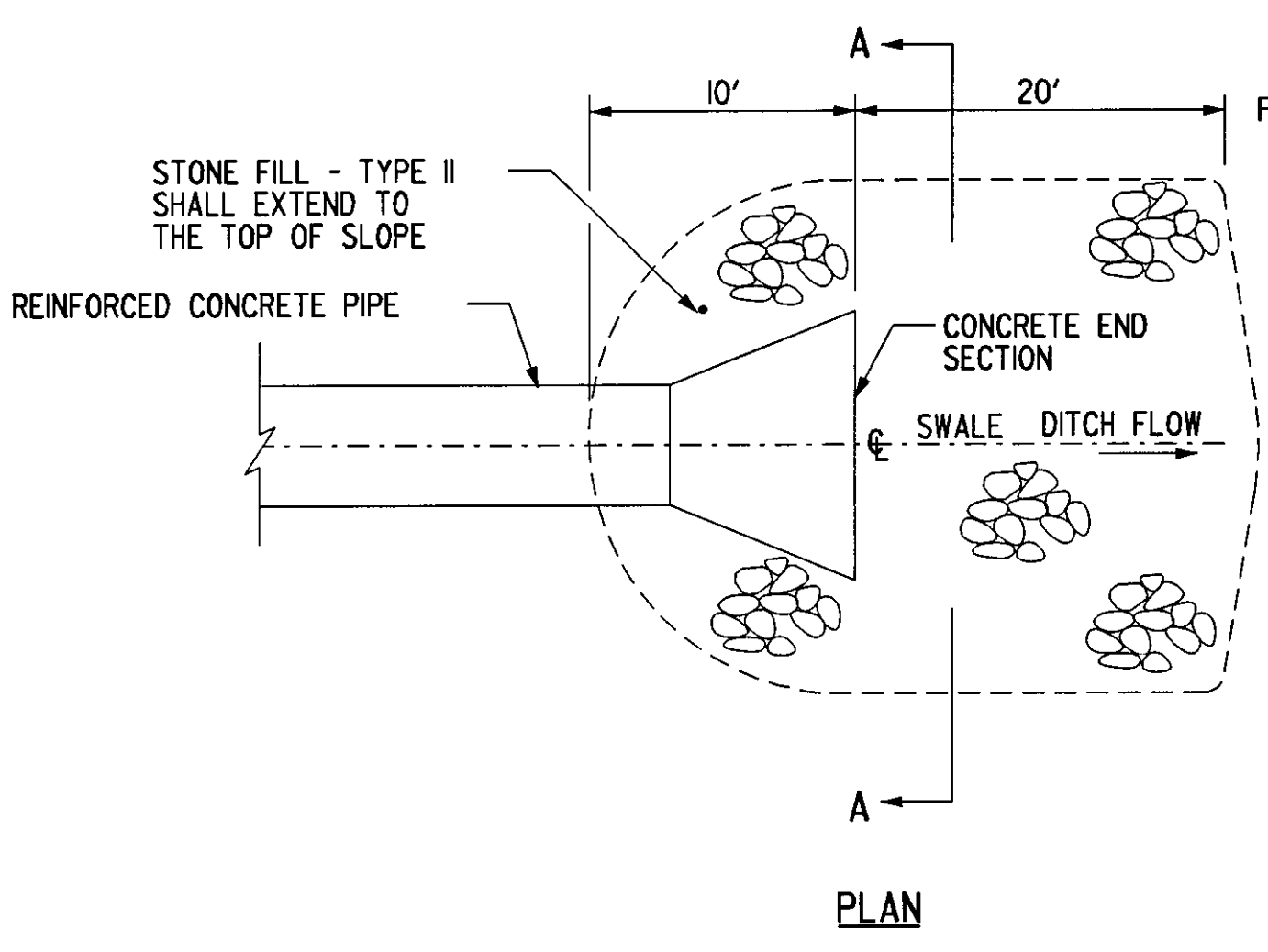
CATCH BASIN DETAIL
NOT TO SCALE



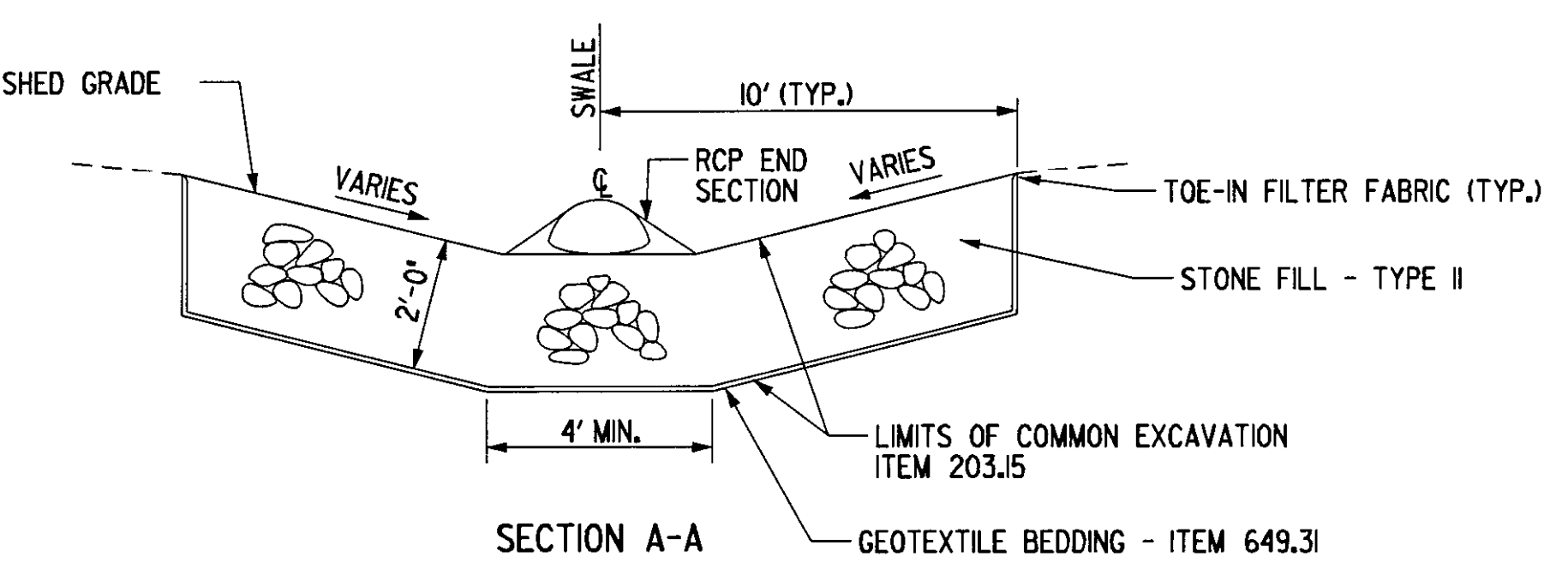
SECTION A-A



CONCRETE PIPE TRENCHING DETAIL
NOT TO SCALE

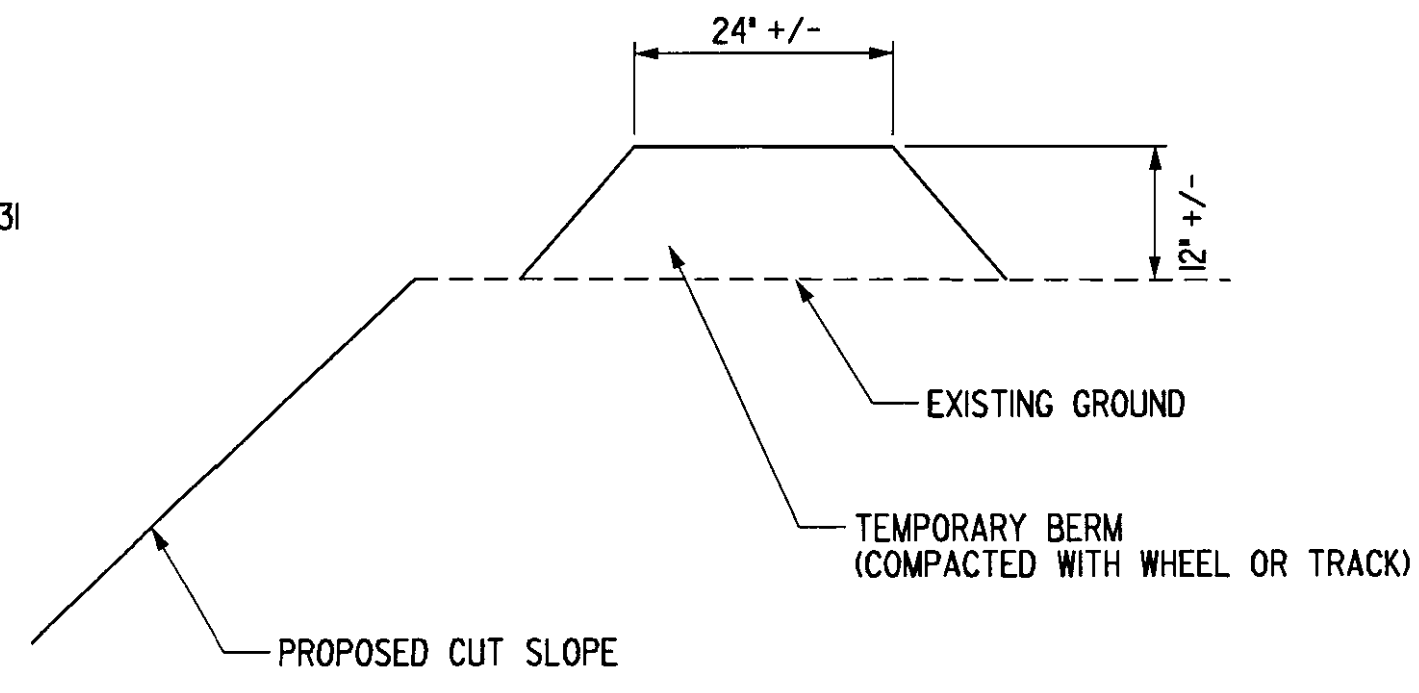


OUTLET PROTECTION DETAIL
ITEM 613.11
NOT TO SCALE

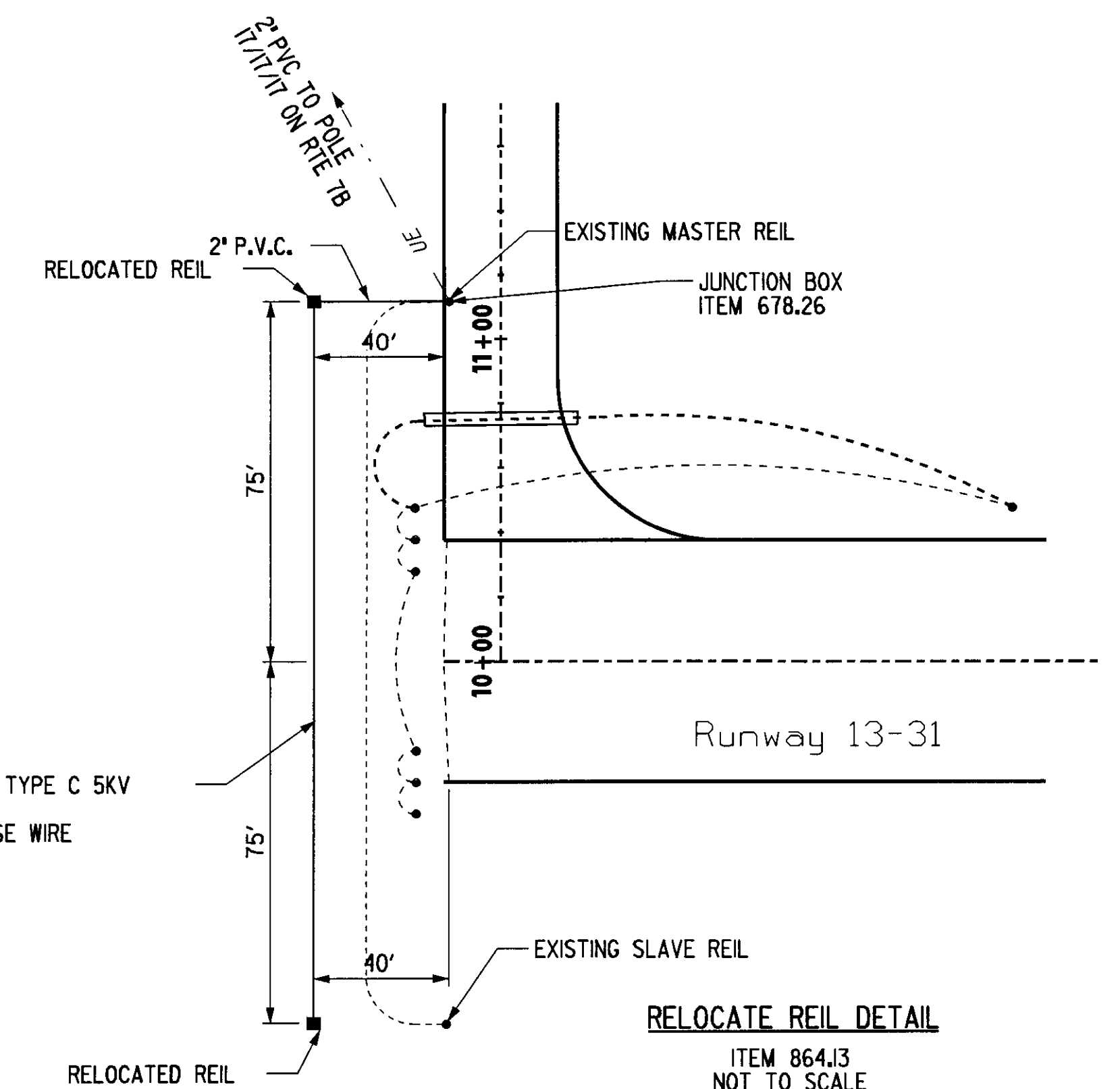


NOTE:
CHANNEL PROTECTION SHALL BE PROVIDED FOR EACH PIPE END SECTION. DIMENSIONS FOR CHANNEL PROTECTION SHALL BE AS SHOWN UNLESS OTHERWISE INDICATED ON THE PLANS.

SECTION A-A



TEMPORARY EARTH BERM DETAIL
ITEM 203.30
NOT TO SCALE



RELOCATE RAIL DETAIL
ITEM 864.13
NOT TO SCALE

- NOTES:
- SEE STANDARD SHEET AP-4 FOR TYPICAL RAIL VISUAL APPROACH AIDE.
 - ALL WORK REQUIRED TO RELOCATE EXISTING RAILS, TO BE INCLUDED IN PRICE BID FOR ITEM 864.13

PROJECT NAME: RUTLAND AIRPORT APRON	
PROJECT NUMBER: 15639.00	
FILE NAME: Z15639DT2.DGN	PLOT DATE: 31-MAY-2001
PROJECT LEADER: E. NASSAR	DRAWN BY: R. PERKINS
DESIGNED BY: R. PERKINS	CHECKED BY: E. NASSAR
MISCELLANEOUS DETAILS	SHEET 9 OF 13

ITEM DETAIL AND DRAINAGE SHEET

STATE OF VERMONT
AGENCY OF TRANSPORTATION

DRAINAGE STRUCTURES

STA.	STA.	POSITION	ASKEW	TYPE	DITCH	PIPE ARCH			PIPE		ALLOWABLE OPTIONS					PIPE ELBOW	ES	CB	DEPTH	CONC	REIN	DI	CHAN	CRM	TR	EXCAV	COMM	UNC	STRUC	GRAN	GRAN	EROS	STONE	FIL	MRKR	REMARKS	
						IN	R	L	D	L	PCCSP	CAAP	RCP	CSP	CPEP																						PCCSP
15+10	14+50	LT./RT.		CB/CB				24	340			IV											202													214	
17+40	17+40	RT.		CB/CB				15	126			IV											62												57		
17+40	16+33	RT.		CB/CB				24	115			IV											75												72		
16+33	14+50	RT.		CB/CB				24	169			IV											156												106		
14+50	14+03	RT.		CB/ES				24	120			III											147												76		
13+63	13+73	RT./LT.		ES/ES				36	156			IV											6												116		
13+61	13+61	RT.		CB/ES				24	145			III											81												91		
16+00	16+00	RT.		CB/CB				15	126			IV											62												57		
10+50	14+00	LT.						6	350			UNDERDRAIN											173												FROM INLET		
14+00	15+10	LT.						6	110			UNDERDRAIN											55												STONE OUTLET, 40 LF. CARRIER PIPE		
10+50	14+00	RT.						6	350			UNDERDRAIN											172												FLUSHING BASIN ON INLET		
14+00	14+70	RT.						6	348			UNDERDRAIN											171												FLUSHING BASIN ON INLET, OUTLET TO CB-8, 20 L.F. CARRIER PIPE		

TOTALS								15	252			IV											1474													789		TOTALS
								24	265			III																										
								24	624			IV																										
								36	156			IV																										
								6	1158			UNDERDRAIN																										
								6	60			UNDERDRAIN CARRIER PIPE																										

PROJECT NAME: RUTLAND AIRPORT APRON

PROJECT NUMBER: 15639.00

FILE NAME: Z15639DRT.DGN

PROJECT LEADER: E. NASSAR

DESIGNED BY: FORM

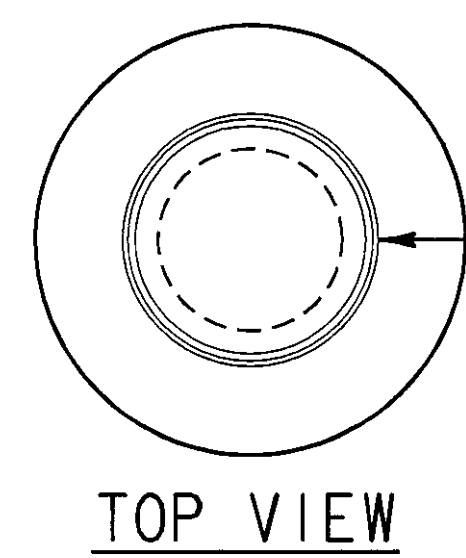
DRAINAGE TABLES

PLOT DATE: \$\$\$DATE\$\$\$

DRAWN BY: G.F.O'NEIL

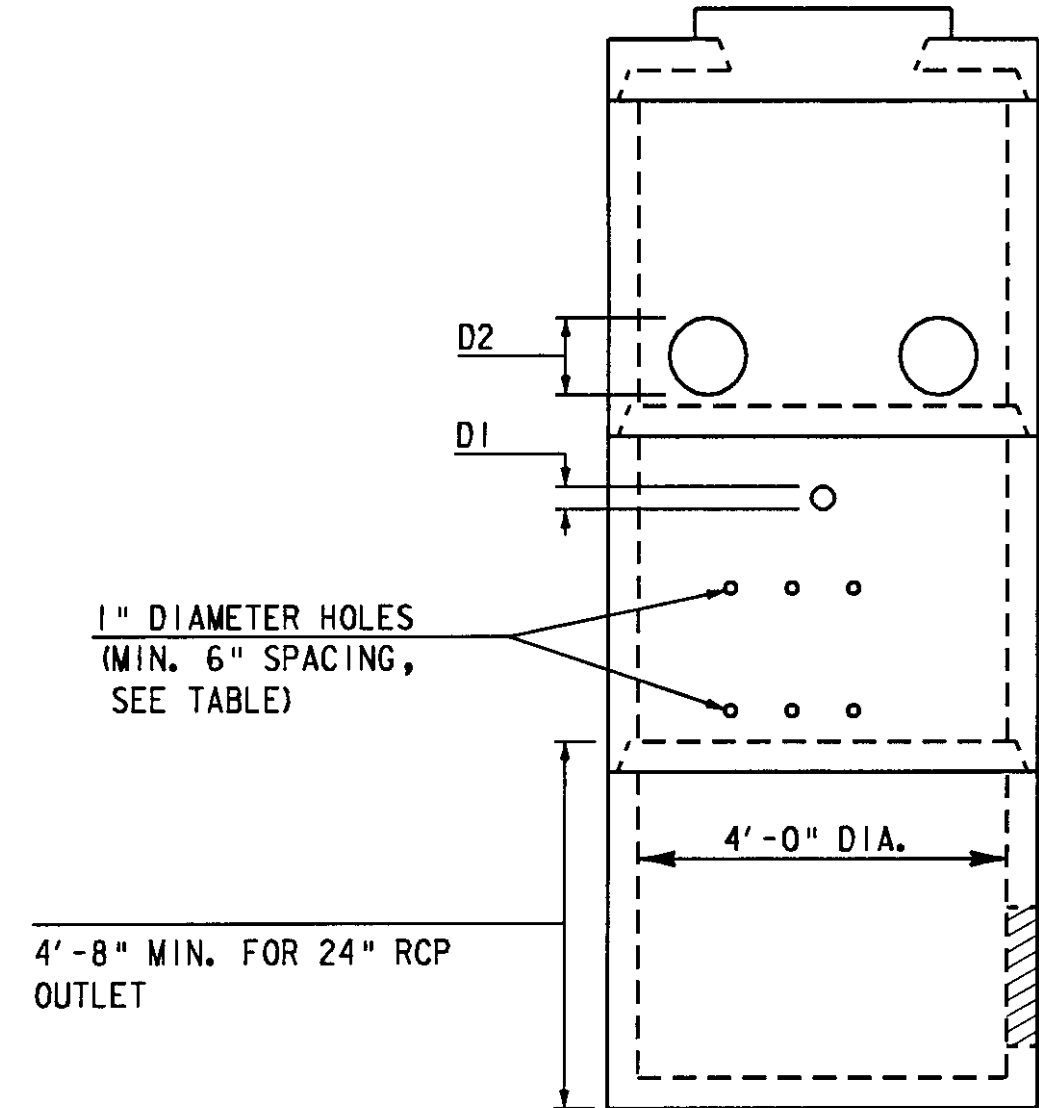
CHECKED BY: W.R.MERWARTH

SHEET 10 OF 13



CAST IRON FRAME & COVER AS PER VTRANS STD. D-11

TOP VIEW

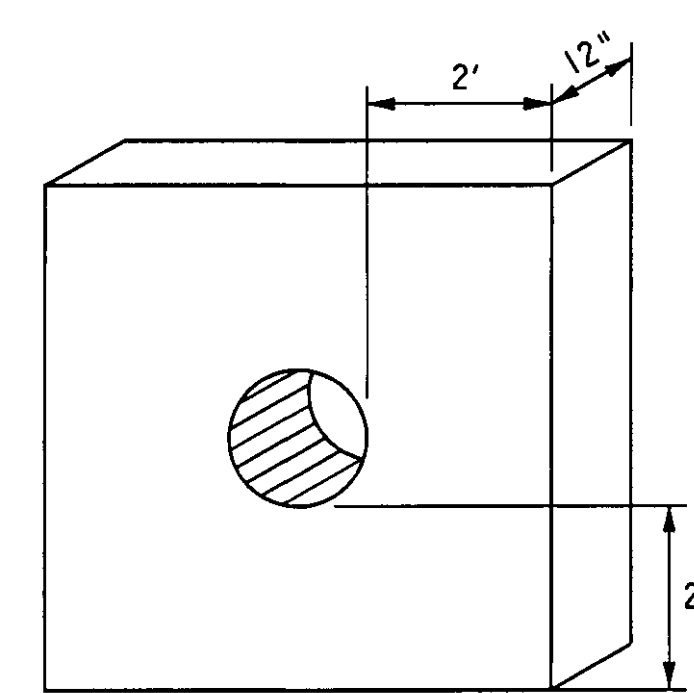


1" DIAMETER HOLES (MIN. 6" SPACING, SEE TABLE)

4'-8" MIN. FOR 24" RCP OUTLET

CONCRETE OUTLET STRUCTURE (FRONT VIEW)

N. T. S.

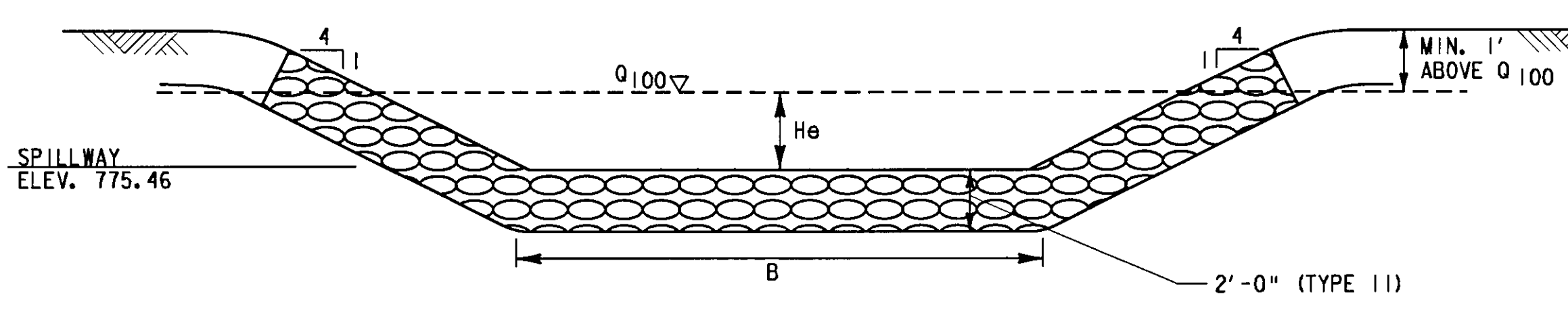


CAST IN PLACE CONCRETE CLASS "A" COLLAR (SUBSIDIARY TO PIPE)

2' PROJECTION

ANTI-SEEP COLLAR

N. T. S.



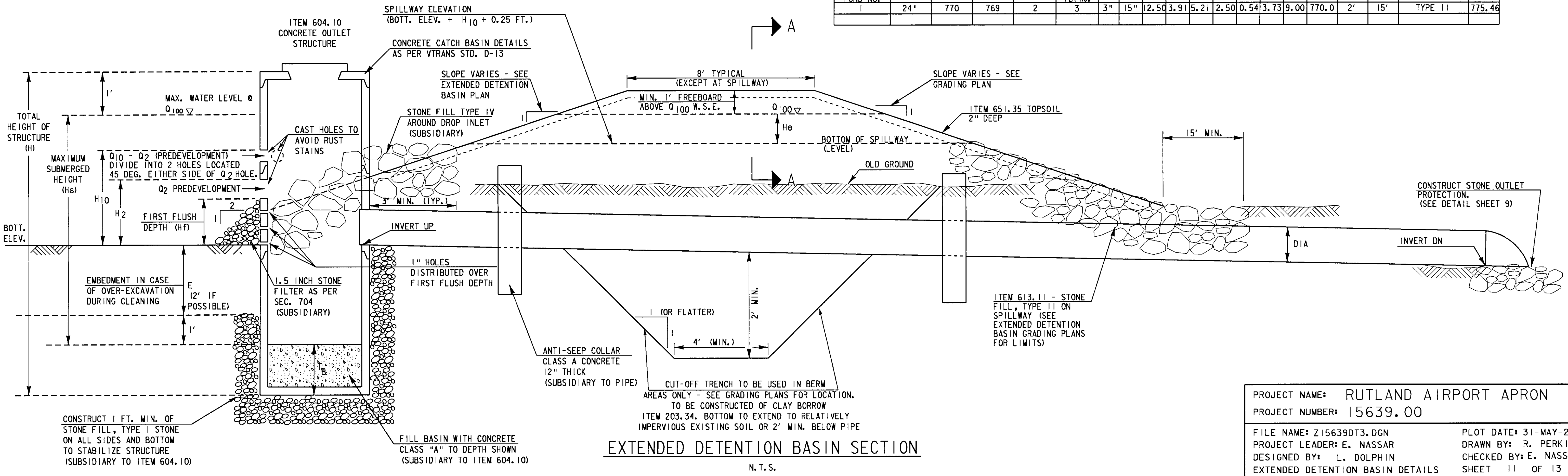
SECTION A-A AT SPILLWAY

N. T. S.

GENERAL NOTES:

1. THE EXTENDED DETENTION BASIN AREA SHALL BE CLEARED OF ALL TREES, ROOTS, STUMPS, BOULDERS AND SOD TO A DEPTH OF 2' BELOW FINAL GRADE.
2. CONSTRUCT BERM USING EMBANKMENT MATERIAL FREE OF SOD, ROOTS, FROZEN MATERIAL, LARGE ROCKS, OR OTHER OBJECTIONABLE MATERIAL. COMPACT AS PER SPECIFICATIONS.
3. CONSTRUCT CUT OFF TRENCH AT CENTERLINE OF BERM OR SLIGHTLY UPSTREAM. FILL WITH CLAY BORROW TO REDUCE SEEPAGE AND STABILIZE THE BERM. COMPACT MATERIAL TO AT LEAST 95% OF MAXIMUM DENSITY.
4. CONCRETE OUTLET STRUCTURE TO BE PRECAST WITH HOLE SIZES AND SPACING AS SHOWN WITH ANY FIELD ADJUSTMENTS APPROVED BY THE RESIDENT ENGINEER. 1" HOLES MAY BE CORE DRILLED OR CAST WITH THE SECTION AT REQUIRED LOCATIONS. OTHER HOLES SHALL BE CAST WITH THE SECTION TO AVOID POSSIBLE RUST STAINS FROM EXPOSED REINFORCEMENT.
5. TOPSOIL AND SEED ALL EARTH SLOPES AS SOON AS POSSIBLE. STABILIZE THE INLET AREA WITH REQUIRED EROSION CONTROL.
6. PROVIDE ACCESS ROAD FOR REPAIR AND CLEAN OUT OF EXTENDED DETENTION BASIN.
7. REMOVE ACCUMULATED SEDIMENT FROM EXTENDED DETENTION POND AT COMPLETION OF PROJECT.
8. ANTI-SEEP COLLARS SHALL BE INSTALLED AS SHOWN TO RESIST FLOW ALONG THE OUTSIDE OF THE PIPE. COLLARS SHOULD PROJECT 2 FEET FROM THE PIPE. TWO COLLARS ARE REQUIRED. THE FIRST COLLAR IS TO BE PLACED 2 FEET PAST THE FIRST PIPE JOINT. THE SECOND COLLAR IS TO BE PLACED 10 FEET BEYOND THE FIRST COLLAR. COST OF THE CONCRETE ANTI-SEEP COLLARS WILL BE INCLUDED WITH THE ITEM FOR THE OUTLET PIPE.

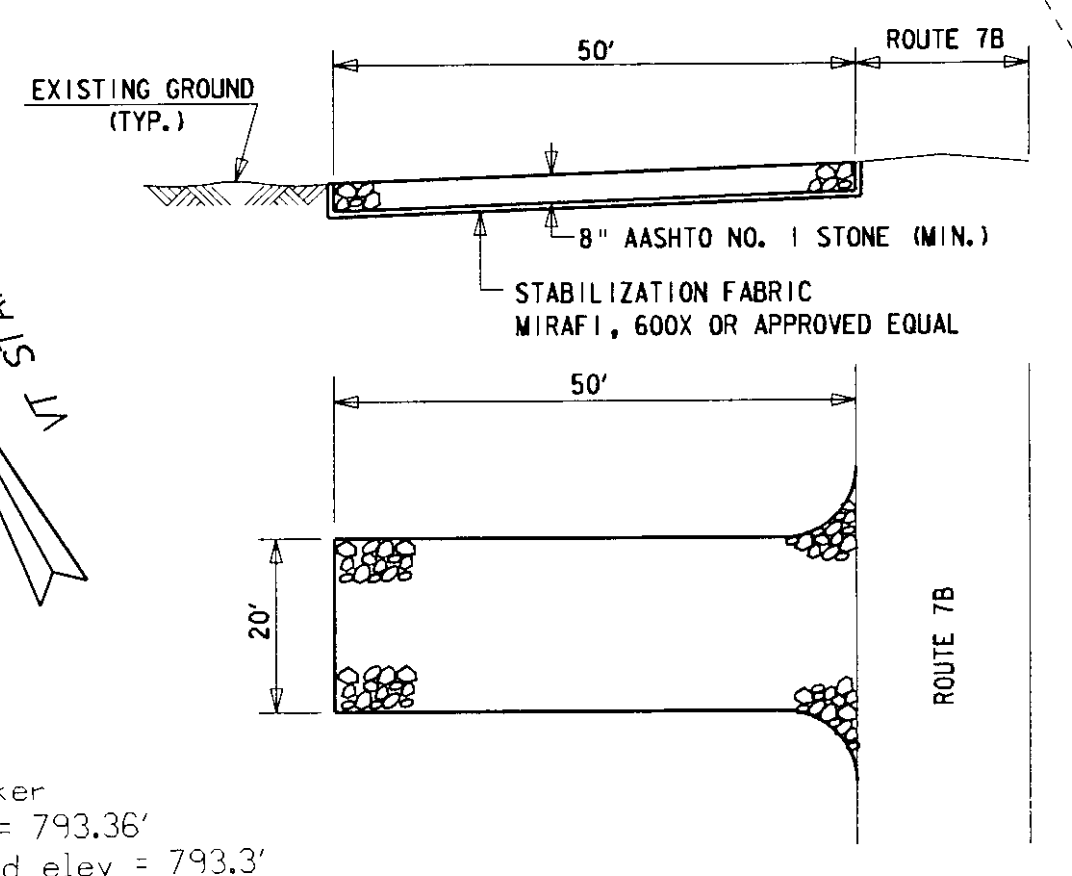
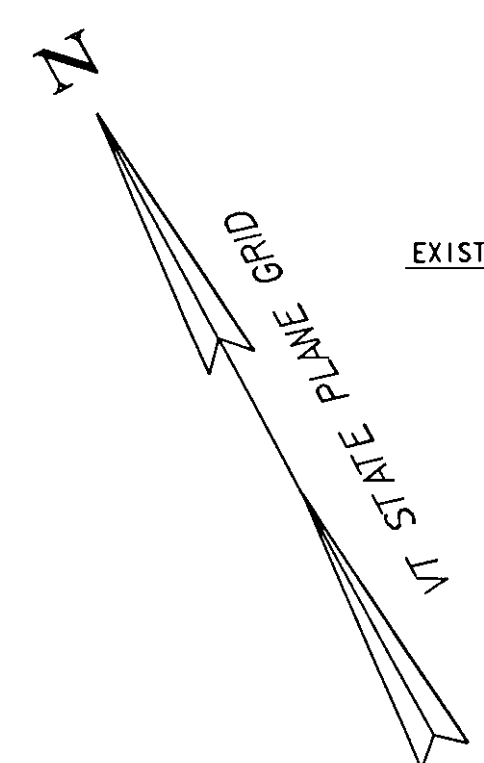
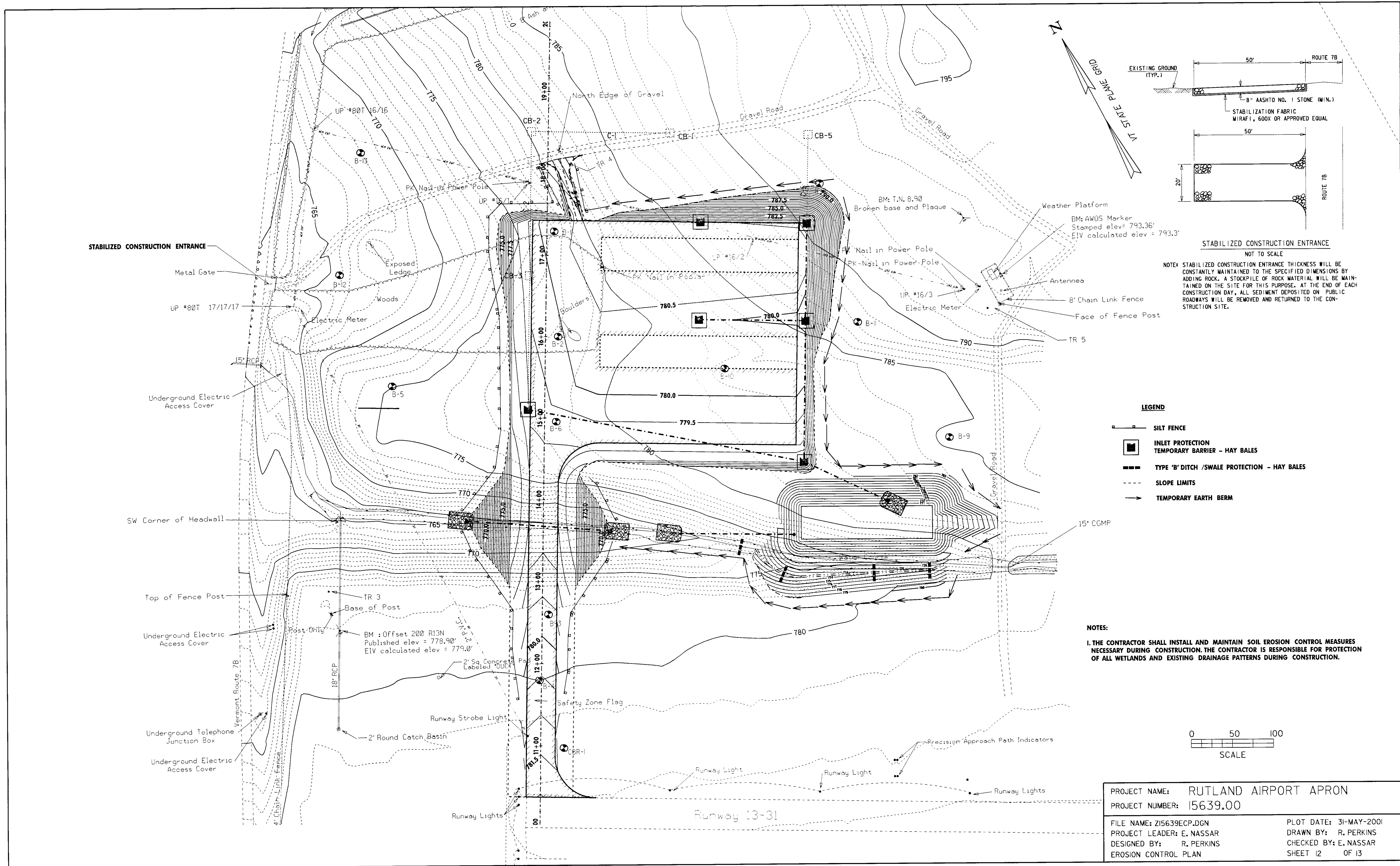
EXTENDED DETENTION POND NO.	OUTLET PIPE		1" DIA. OUTLETS		D1	D2	H	H ₂	H ₁₀	T _B	H _e	H _f	H _s	BOT. ELEV.	E	SPILLWAY		ELEV.	
	DIA	INV UP	INV DN	ROWS												OUTLETS PER ROW	B		STONE FILL
1	24"	770	769	2	3	3"	15"	12.50	3.91	5.21	2.50	0.54	3.73	9.00	770.0	2'	15'	TYPE 11	775.46



EXTENDED DETENTION BASIN SECTION

N. T. S.

PROJECT NAME: RUTLAND AIRPORT APRON
 PROJECT NUMBER: 15639.00
 FILE NAME: Z15639DT3.DGN PLOT DATE: 31-MAY-2001
 PROJECT LEADER: E. NASSAR DRAWN BY: R. PERKINS
 DESIGNED BY: L. DOLPHIN CHECKED BY: E. NASSAR
 EXTENDED DETENTION BASIN DETAILS SHEET 11 OF 13

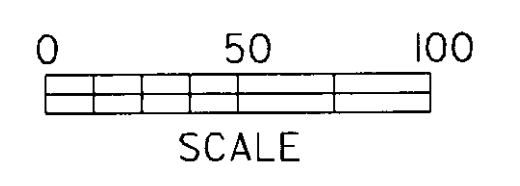


NOTE: STABILIZED CONSTRUCTION ENTRANCE THICKNESS WILL BE CONSTANTLY MAINTAINED TO THE SPECIFIED DIMENSIONS BY ADDING ROCK. A STOCKPILE OF ROCK MATERIAL WILL BE MAINTAINED ON THE SITE FOR THIS PURPOSE. AT THE END OF EACH CONSTRUCTION DAY, ALL SEDIMENT DEPOSITED ON PUBLIC ROADWAYS WILL BE REMOVED AND RETURNED TO THE CONSTRUCTION SITE.

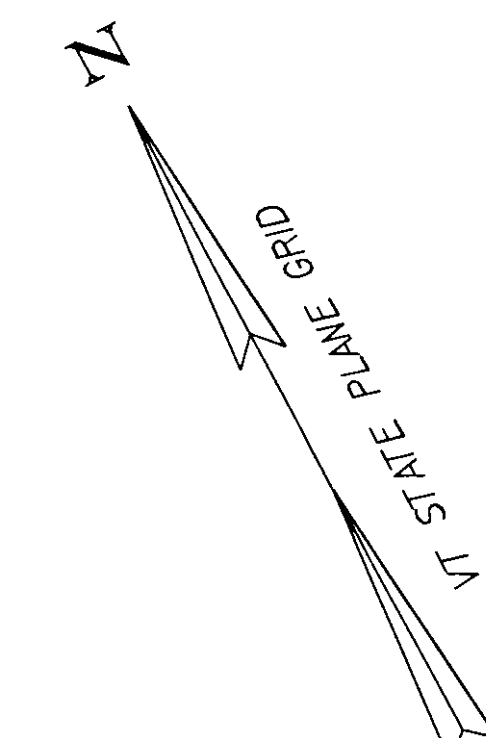
LEGEND

- SILT FENCE
- INLET PROTECTION
- TEMPORARY BARRIER - HAY BALES
- TYPE 'B' DITCH /SWALE PROTECTION - HAY BALES
- - - SLOPE LIMITS
- TEMPORARY EARTH BERM

NOTES:
 1. THE CONTRACTOR SHALL INSTALL AND MAINTAIN SOIL EROSION CONTROL MEASURES NECESSARY DURING CONSTRUCTION. THE CONTRACTOR IS RESPONSIBLE FOR PROTECTION OF ALL WETLANDS AND EXISTING DRAINAGE PATTERNS DURING CONSTRUCTION.

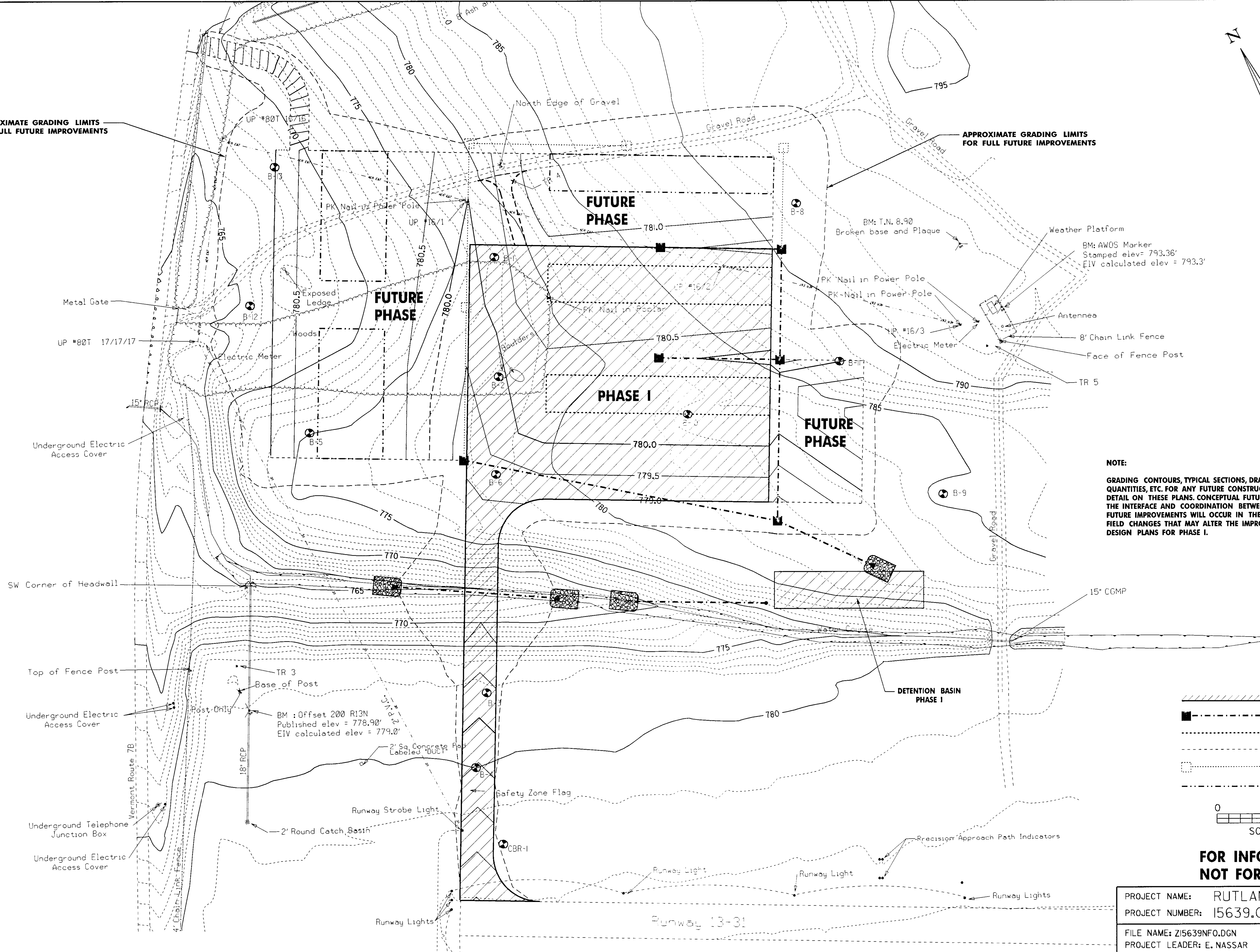


PROJECT NAME:	RUTLAND AIRPORT APRON
PROJECT NUMBER:	15639.00
FILE NAME:	Z15639ECP.DGN
PROJECT LEADER:	E. NASSAR
DESIGNED BY:	R. PERKINS
EROSION CONTROL PLAN	
PLOT DATE:	31-MAY-2001
DRAWN BY:	R. PERKINS
CHECKED BY:	E. NASSAR
SHEET 12	OF 13



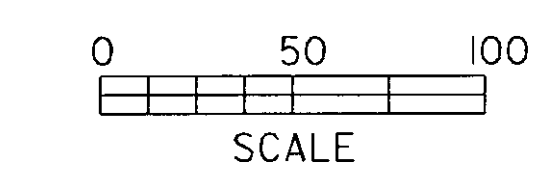
APPROXIMATE GRADING LIMITS FOR FULL FUTURE IMPROVEMENTS

APPROXIMATE GRADING LIMITS FOR FULL FUTURE IMPROVEMENTS



NOTE:
 GRADING CONTOURS, TYPICAL SECTIONS, DRAINAGE FACILITIES, PAVEMENT MARKINGS, QUANTITIES, ETC. FOR ANY FUTURE CONSTRUCTION PHASE HAVE NOT BEEN SHOWN IN DETAIL ON THESE PLANS. CONCEPTUAL FUTURE DRAINAGE IS ALSO SHOWN ON SHEET 6. THE INTERFACE AND COORDINATION BETWEEN THE PHASE I IMPROVEMENTS AND ANY FUTURE IMPROVEMENTS WILL OCCUR IN THE FUTURE AND WILL INCORPORATE ANY FIELD CHANGES THAT MAY ALTER THE IMPROVEMENTS FROM THOSE SHOWN ON THE DESIGN PLANS FOR PHASE I.

- LEGEND**
- PHASE I IMPROVEMENTS
 - PHASE I DRAINAGE
 - PHASE I HANGAR PAD
 - FUTURE PHASE IMPROVEMENTS
 - FUTURE DRAINAGE IMPROVEMENTS
 - FUTURE HANGAR PAD



**FOR INFORMATION ONLY
 NOT FOR CONSTRUCTION**

PROJECT NAME:	RUTLAND AIRPORT APRON
PROJECT NUMBER:	15639.00
FILE NAME:	Z15639NFO.DGN
PROJECT LEADER:	E. NASSAR
DESIGNED BY:	R. PERKINS
FULL FUTURE IMPROVEMENTS	
PLOT DATE:	31-MAY-2001
DRAWN BY:	R. PERKINS
CHECKED BY:	E. NASSAR
SHEET	13 OF 13