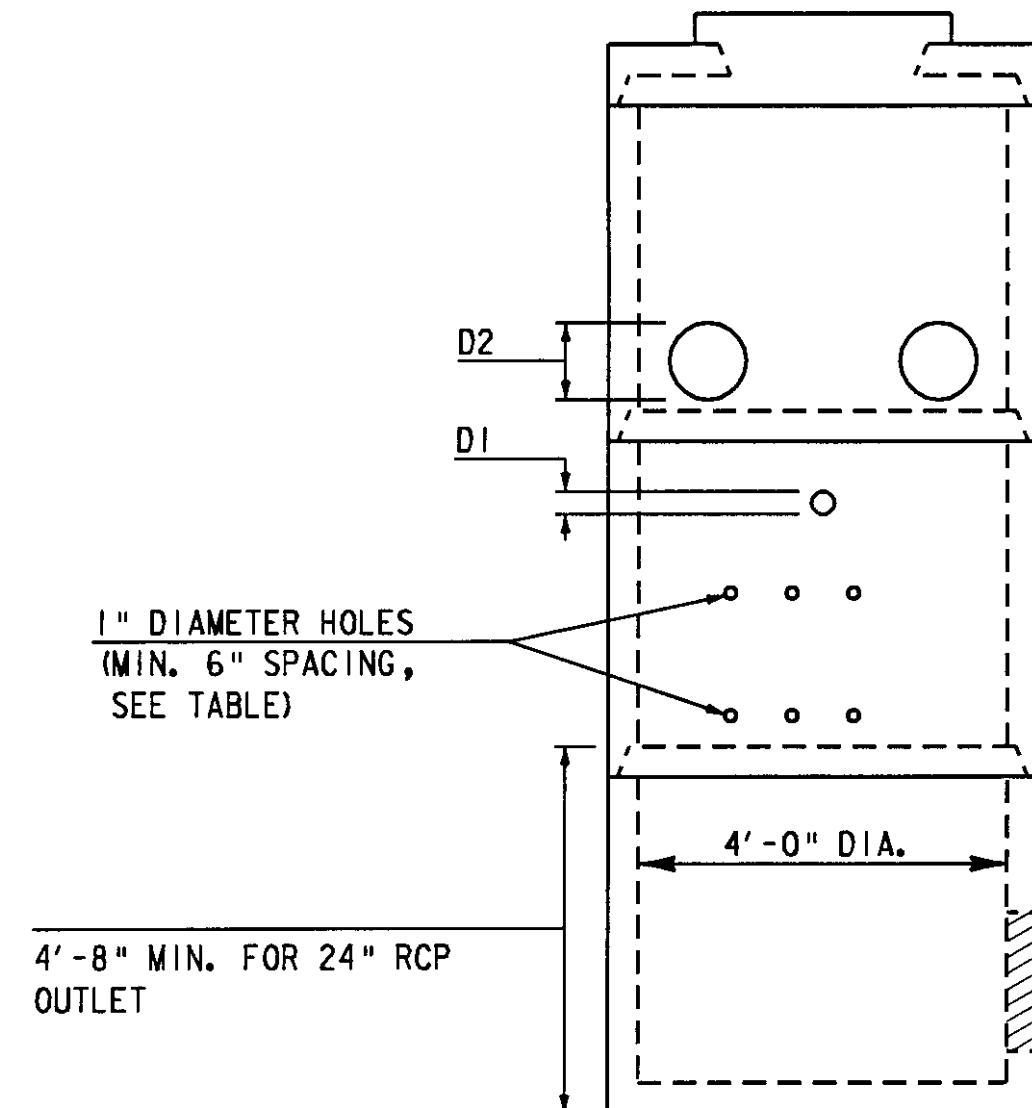


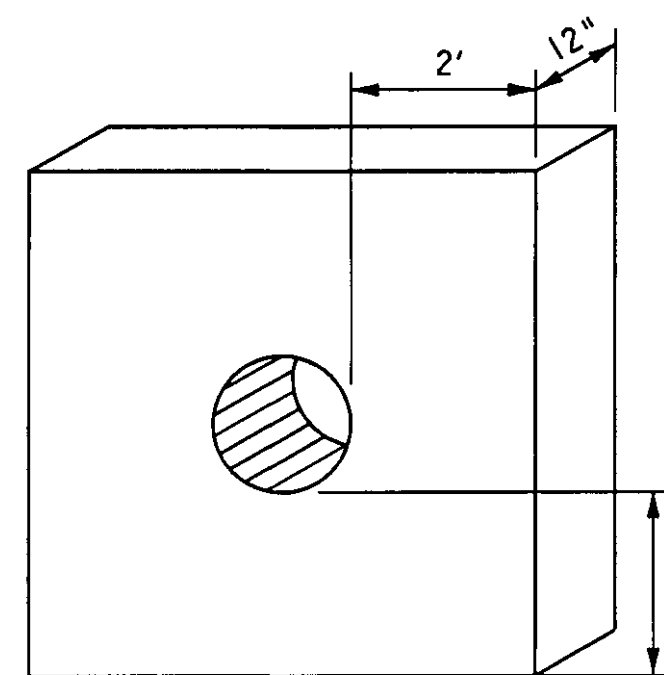
TOP VIEW

CAST IRON FRAME & COVER AS PER VTRANS STD. D-11



CONCRETE OUTLET STRUCTURE (FRONT VIEW)

N. T. S.

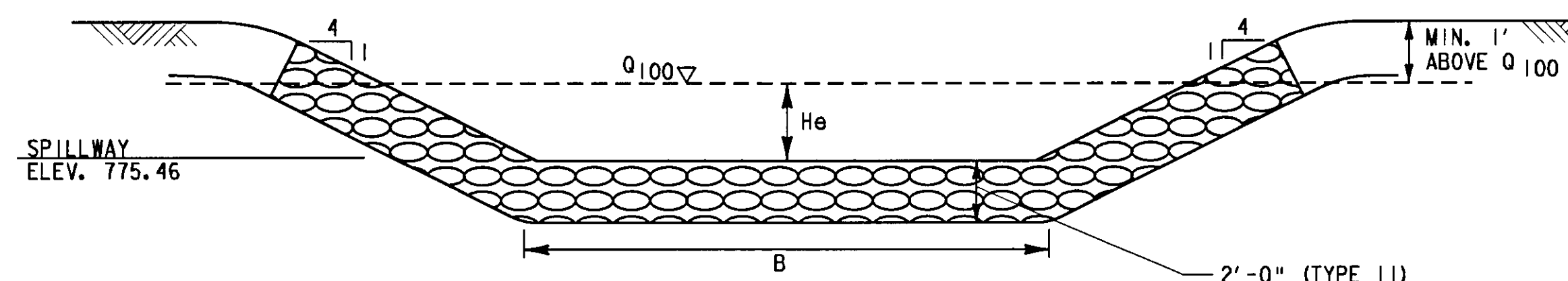


CAST IN PLACE CONCRETE CLASS "A" COLLAR (SUBSIDIARY TO PIPE)

2' PROJECTION

ANTI-SEEP COLLAR

N. T. S.



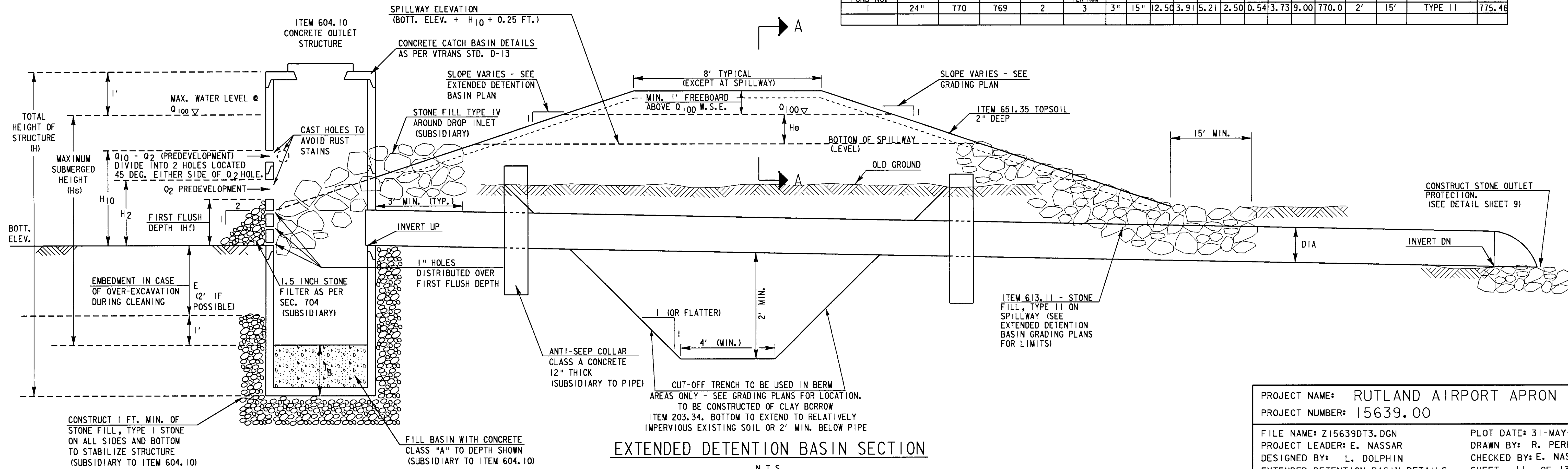
SECTION A-A AT SPILLWAY

N. T. S.

GENERAL NOTES:

1. THE EXTENDED DETENTION BASIN AREA SHALL BE CLEARED OF ALL TREES, ROOTS, STUMPS, BOULDERS AND SOD TO A DEPTH OF 2' BELOW FINAL GRADE.
2. CONSTRUCT BERM USING EMBANKMENT MATERIAL FREE OF SOD, ROOTS, FROZEN MATERIAL, LARGE ROCKS, OR OTHER OBJECTIONABLE MATERIAL. COMPACT AS PER SPECIFICATIONS.
3. CONSTRUCT CUT OFF TRENCH AT CENTERLINE OF BERM OR SLIGHTLY UPSTREAM. FILL WITH CLAY BORROW TO REDUCE SEEPAGE AND STABILIZE THE BERM. COMPACT MATERIAL TO AT LEAST 95% OF MAXIMUM DENSITY.
4. CONCRETE OUTLET STRUCTURE TO BE PRECAST WITH HOLE SIZES AND SPACING AS SHOWN WITH ANY FIELD ADJUSTMENTS APPROVED BY THE RESIDENT ENGINEER. 1" HOLES MAY BE CORE DRILLED OR CAST WITH THE SECTION AT REQUIRED LOCATIONS. OTHER HOLES SHALL BE CAST WITH THE SECTION TO AVOID POSSIBLE RUST STAINS FROM EXPOSED REINFORCEMENT.
5. TOPSOIL AND SEED ALL EARTH SLOPES AS SOON AS POSSIBLE. STABILIZE THE INLET AREA WITH REQUIRED EROSION CONTROL.
6. PROVIDE ACCESS ROAD FOR REPAIR AND CLEAN OUT OF EXTENDED DETENTION BASIN.
7. REMOVE ACCUMULATED SEDIMENT FROM EXTENDED DETENTION POND AT COMPLETION OF PROJECT.
8. ANTI-SEEP COLLARS SHALL BE INSTALLED AS SHOWN TO RESIST FLOW ALONG THE OUTSIDE OF THE PIPE. COLLARS SHOULD PROJECT 2 FEET FROM THE PIPE. TWO COLLARS ARE REQUIRED. THE FIRST COLLAR IS TO BE PLACED 2 FEET PAST THE FIRST PIPE JOINT. THE SECOND COLLAR IS TO BE PLACED 10 FEET BEYOND THE FIRST COLLAR. COST OF THE CONCRETE ANTI-SEEP COLLARS WILL BE INCLUDED WITH THE ITEM FOR THE OUTLET PIPE.

EXTENDED DETENTION POND NO.	OUTLET PIPE		1" DIA. OUTLETS		D1	D2	H	H2	H10	TB	He	HF	Hs	BOTT. ELEV.	E	SPILLWAY		ELEV.	
	DIA	INV UP	INV DN	ROWS												OUTLETS PER ROW	B		STONE FILL
1	24"	770	769	2	3	3"	15"	12.50	3.91	5.21	2.50	0.54	3.73	9.00	770.0	2'	15'	TYPE II	775.46



EXTENDED DETENTION BASIN SECTION

N. T. S.

PROJECT NAME:	RUTLAND AIRPORT APRON	PLOT DATE:	31-MAY-2001
PROJECT NUMBER:	15639.00	DRAWN BY:	R. PERKINS
FILE NAME:	Z15639DT3.DGN	DESIGNED BY:	L. DOLPHIN
		CHECKED BY:	E. NASSAR
		EXTENDED DETENTION BASIN DETAILS	SHEET 11 OF 13