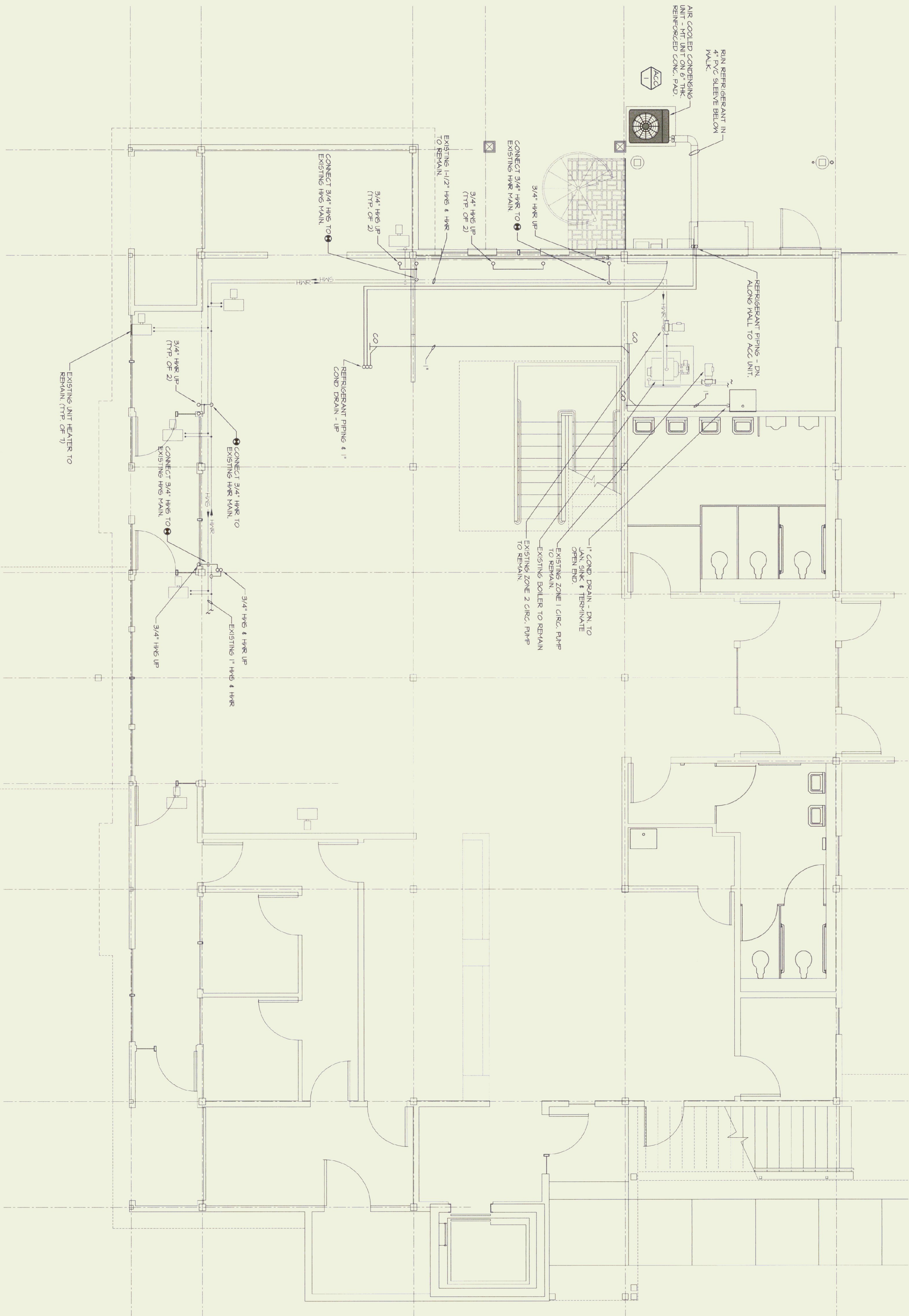


HVAC SYMBOL LIST

ALL SYMBOLS ARE NOT NECESSARILY USED

LD5	LOW PRESSURE STEAM
MD5	MEDIUM PRESSURE STEAM
HD5	HIGH PRESSURE STEAM
LD6	LOW PRESSURE CONDENSATE
MD6	MEDIUM PRESSURE CONDENSATE
HD6	HIGH PRESSURE CONDENSATE
LD7	LOW WATER SUPPLY
MD7	MEDIUM WATER SUPPLY
HD7	HIGH WATER SUPPLY
LD8	LOW WATER RETURN
MD8	MEDIUM WATER RETURN
HD8	HIGH WATER RETURN
LD9	LOW CHILLED WATER SUPPLY
MD9	MEDIUM CHILLED WATER SUPPLY
HD9	HIGH CHILLED WATER SUPPLY
LD10	LOW CONDENSER WATER SUPPLY
MD10	MEDIUM CONDENSER WATER SUPPLY
HD10	HIGH CONDENSER WATER SUPPLY
LD11	LOW CONDENSER WATER RETURN
MD11	MEDIUM CONDENSER WATER RETURN
HD11	HIGH CONDENSER WATER RETURN
LD12	LOW BOILER FEED
MD12	MEDIUM BOILER FEED
HD12	HIGH BOILER FEED
LD13	LOW BOILER BLOW DOWN
MD13	MEDIUM BOILER BLOW DOWN
HD13	HIGH BOILER BLOW DOWN
LD14	LOW REFRIGERANT VENT
MD14	MEDIUM REFRIGERANT VENT
HD14	HIGH REFRIGERANT VENT
LD15	LOW REFRIGERANT LIQUID
MD15	MEDIUM REFRIGERANT LIQUID
HD15	HIGH REFRIGERANT LIQUID
LD16	LOW REFRIGERANT SUCTON
MD16	MEDIUM REFRIGERANT SUCTON
HD16	HIGH REFRIGERANT SUCTON
LD17	LOW REFRIGERANT HOT GAS
MD17	MEDIUM REFRIGERANT HOT GAS
HD17	HIGH REFRIGERANT HOT GAS
LD18	LOW GAS REFRIGERATED AIR
MD18	MEDIUM GAS REFRIGERATED AIR
HD18	HIGH GAS REFRIGERATED AIR
LD19	LOW FUEL OIL SUPPLY
MD19	MEDIUM FUEL OIL SUPPLY
HD19	HIGH FUEL OIL SUPPLY
LD20	LOW FUEL OIL RETURN
MD20	MEDIUM FUEL OIL RETURN
HD20	HIGH FUEL OIL RETURN
LD21	LOW FUEL OIL FILL
MD21	MEDIUM FUEL OIL FILL
HD21	HIGH FUEL OIL FILL
LD22	LOW FUEL OIL COOL WATER (CW)
MD22	MEDIUM FUEL OIL COOL WATER (CW)
HD22	HIGH FUEL OIL COOL WATER (CW)
LD23	LOW REDUCER
MD23	MEDIUM REDUCER
HD23	HIGH REDUCER
LD24	LOW CAP OR FLUE
MD24	MEDIUM CAP OR FLUE
HD24	HIGH CAP OR FLUE
LD25	LOW BOTTOM CONNECTION/TURN AWAY
MD25	MEDIUM BOTTOM CONNECTION/TURN AWAY
HD25	HIGH BOTTOM CONNECTION/TURN AWAY
LD26	LOW VALVE (SHUT OFF)
MD26	MEDIUM VALVE (SHUT OFF)
HD26	HIGH VALVE (SHUT OFF)
LD27	LOW CHECK VALVE
MD27	MEDIUM CHECK VALVE
HD27	HIGH CHECK VALVE
LD28	LOW CONTROL VALVE (2-WAY)
MD28	MEDIUM CONTROL VALVE (2-WAY)
HD28	HIGH CONTROL VALVE (2-WAY)
LD29	LOW PRESSURE RELIEF VALVE
MD29	MEDIUM PRESSURE RELIEF VALVE
HD29	HIGH PRESSURE RELIEF VALVE
LD30	LOW TRIPLE DUCT VALVE
MD30	MEDIUM TRIPLE DUCT VALVE
HD30	HIGH TRIPLE DUCT VALVE
LD31	LOW PRESSURE REDUCING VALVE
MD31	MEDIUM PRESSURE REDUCING VALVE
HD31	HIGH PRESSURE REDUCING VALVE
LD32	LOW BALANCING COCK
MD32	MEDIUM BALANCING COCK
HD32	HIGH BALANCING COCK
LD33	LOW FLOW BALANCER
MD33	MEDIUM FLOW BALANCER
HD33	HIGH FLOW BALANCER
LD34	LOW STRAINER
MD34	MEDIUM STRAINER
HD34	HIGH STRAINER
LD35	LOW THERMOSTATIC TRAP ASSEMBLY
MD35	MEDIUM THERMOSTATIC TRAP ASSEMBLY
HD35	HIGH THERMOSTATIC TRAP ASSEMBLY
LD36	LOW BUCKET TRAP ASSEMBLY
MD36	MEDIUM BUCKET TRAP ASSEMBLY
HD36	HIGH BUCKET TRAP ASSEMBLY
LD37	LOW THERMOWEATER
MD37	MEDIUM THERMOWEATER
HD37	HIGH THERMOWEATER
LD38	LOW PRESSURE GAUGE
MD38	MEDIUM PRESSURE GAUGE
HD38	HIGH PRESSURE GAUGE
LD39	LOW AIR VENT TEST/CONTROL WELL
MD39	MEDIUM AIR VENT TEST/CONTROL WELL
HD39	HIGH AIR VENT TEST/CONTROL WELL
LD40	LOW PIPE FITCH DOWN/CURVE RISE
MD40	MEDIUM PIPE FITCH DOWN/CURVE RISE
HD40	HIGH PIPE FITCH DOWN/CURVE RISE
LD41	LOW FINNED TUBE RADIATION ELEMENT
MD41	MEDIUM FINNED TUBE RADIATION ELEMENT
HD41	HIGH FINNED TUBE RADIATION ELEMENT
LD42	LOW TRANSITION/SQUARE TO ROUND
MD42	MEDIUM TRANSITION/SQUARE TO ROUND
HD42	HIGH TRANSITION/SQUARE TO ROUND
LD43	LOW RETURN OR EXHAUST DUCT SECTION
MD43	MEDIUM RETURN OR EXHAUST DUCT SECTION
HD43	HIGH RETURN OR EXHAUST DUCT SECTION
LD44	LOW FIRE DAMPER
MD44	MEDIUM FIRE DAMPER
HD44	HIGH FIRE DAMPER
LD45	LOW BACKDRAUGHT DAMPER
MD45	MEDIUM BACKDRAUGHT DAMPER
HD45	HIGH BACKDRAUGHT DAMPER
LD46	LOW SMOKE DAMPER
MD46	MEDIUM SMOKE DAMPER
HD46	HIGH SMOKE DAMPER
LD47	LOW VALVE DAMPER
MD47	MEDIUM VALVE DAMPER
HD47	HIGH VALVE DAMPER
LD48	LOW MOTOR OPERATED DAMPER
MD48	MEDIUM MOTOR OPERATED DAMPER
HD48	HIGH MOTOR OPERATED DAMPER
LD49	LOW CUBIC FEET/MINUTE
MD49	MEDIUM CUBIC FEET/MINUTE
HD49	HIGH CUBIC FEET/MINUTE
LD50	LOW NOT TO SCALE
MD50	MEDIUM NOT TO SCALE
HD50	HIGH NOT TO SCALE
LD51	LOW EXISTING
MD51	MEDIUM EXISTING
HD51	HIGH EXISTING
LD52	LOW THERMOSTAT
MD52	MEDIUM THERMOSTAT
HD52	HIGH THERMOSTAT
LD53	LOW ELECTRIC THERMOSTAT
MD53	MEDIUM ELECTRIC THERMOSTAT
HD53	HIGH ELECTRIC THERMOSTAT
LD54	LOW THERMOSTAT WITH MULTIPLE SET POINTS
MD54	MEDIUM THERMOSTAT WITH MULTIPLE SET POINTS
HD54	HIGH THERMOSTAT WITH MULTIPLE SET POINTS
LD55	LOW STATIC PRESSURE SENSOR
MD55	MEDIUM STATIC PRESSURE SENSOR
HD55	HIGH STATIC PRESSURE SENSOR
LD56	LOW HANDICAP UNDERCUT DOOR (1" BY THE 6'6")
MD56	MEDIUM HANDICAP UNDERCUT DOOR (1" BY THE 6'6")
HD56	HIGH HANDICAP UNDERCUT DOOR (1" BY THE 6'6")
LD57	LOW AIR FLOW
MD57	MEDIUM AIR FLOW
HD57	HIGH AIR FLOW
LD58	LOW ACODING
MD58	MEDIUM ACODING
HD58	HIGH ACODING
LD59	LOW WORK TO BE REMOVED
MD59	MEDIUM WORK TO BE REMOVED
HD59	HIGH WORK TO BE REMOVED
LD60	LOW REGISTER DIFFERER OR
MD60	MEDIUM REGISTER DIFFERER OR
HD60	HIGH REGISTER DIFFERER OR
LD61	LOW GRILLE DESIGNATION
MD61	MEDIUM GRILLE DESIGNATION
HD61	HIGH GRILLE DESIGNATION



FIRST FLOOR MECHANICAL PLAN
SCALE: 1/4" = 1'-0"

	PROJECT NORTH	REV PLAN
	PROJECT 98000	DRAWN: MAM
<p>RUTLAND STATE AIRPORT 1002 AIRPORT ROAD, TERMINAL BUILDING NORTH CLARNDON, VERMONT 05789 TEL: 802-776-8891 FAX: 802-773-8880</p>		
<p>FIRST FLOOR MECHANICAL PLAN</p>		
<p>Renovations and Addition for the</p>		
NO.	REVISION	DATE
01	RD DATE	9/15/2002
<p>JANUARY 2002</p>		
<p>BID SET</p>		
<p>BUILDING OWNER: STATE OF VERMONT AGENCY OF TRANSPORTATION DEPT. OF MAINTENANCE AND AVIATION NATIONAL LIFE BUILDING, ROOM 33 MONTPELIER, VERMONT 05633-8001 TEL: 802-255-5767 / FAX: 802-255-5848</p>		
<p>DEPT. OF BUILDINGS & GENERAL SERVICES 2 GOVERNOR ALLEN AVENUE MONTPELIER, VERMONT 05633 TEL: 802-255-5314 FAX: 802-255-5353</p>		
<p>PROJECT MANAGEMENT: STATE OF VERMONT</p>		
<p>ZAREMBA-SOPKO ASSOCIATES, PLLC STRUCTURAL ENGINEERING 5 BROADWAY, SUITE 203 TRULY, NEW YORK 12180 TELEPHONE: 518-679-2555 FAX: 518-679-2552</p>		
<p>W.V. ENGINEERING ASSOCIATES, P.C. MECHANICAL AND ELECTRICAL ENGINEERING 11 KING COURT KEENE, NEW HAMPSHIRE 03431 TELEPHONE: 603-582-7007 FAX: 603-582-7008 WWW.DM12A.COM</p>		
<p>Browning Moore Zuckert Ackerman 103 Wales Street Rutland, Vermont 05701 Tel: 802-773-8245 Fax: 802-773-8235 info@dm12a.com www.dm12a.com</p>		
<p>Architects & Planners</p>		
<p>BMZA</p>		