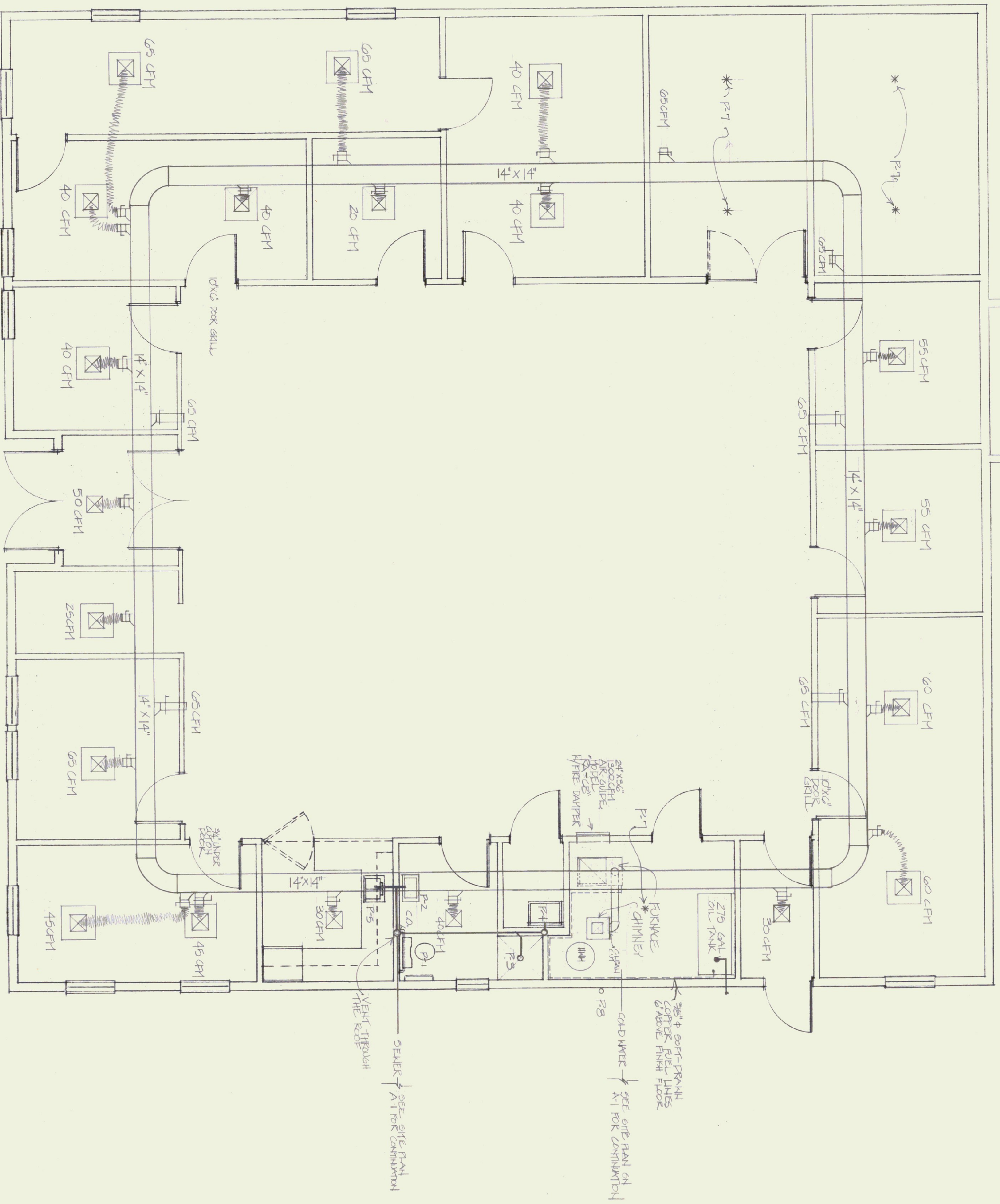


PLUMBING ROUGH-IN		SCHEDULE			
FIXTURE#	FIXTURE	SUPPLY	NOTE	VENT	REMARKS
P1	TOILET/TANK TYPE	1/2"	4"	4" (VTR)	
P2	LABORATORY	1/2"	2"	2"	
P3	SHOWER	1/2"	2"	2"	
P4	SERVICE SINK	3/4"	4"	2"	
P5	KITCHEN SINK	1/2"	2"	2"	
P6	WATER HEATER	3/4"	N/A	N/A	ROUTE WITH FIT RELIEF VALVE
P7	SPRINKLER HEAD	1"	N/A	N/A	
P8	ROOF SILL COCK	N/A	3/4"	N/A	ROUTE WITH WOOD BARRIER

RISER DIAGRAMS



HEATING & PLUMBING FLOOR PLAN

SCALE: 1/4" = 1'-0"

NOTE: SEE REFLECTED CEILING PLAN X-3 FOR DIFFUSER LOCATIONS

NOTES

- 1) Furnace shall be Carrier Model 58RU, upflow, size 085, Series 110-CV, output capacity 94,000 Btu/hr., 1300 CFM at .35" TSP. Furnace intake shall be equipped with a filter rack and filters.
- 2) Fuel tank shall be a 275 gallon, UL listed, above-ground tank.
- 3) Fuel tank accessories shall include:
 - a) Locking fill cap, 2", Universal 71M
 - b) Vent, 2", Universal 45-2
 - c) Vent/gauge combination, "Scally Ventalum gauge"
 - d) Heat activated valve, 3/8", "Firematic"
- 4) Ceiling diffusers shall be sized as shown:
 - a) for T-bar ceilings "Airguide" Model A19-PR-GR-SR
 - b) for suspended drywall ceilings "Airguide" Model A19-PR-GR-SR
- 5) Supply grilles shall be "Airguide" Model HV-GR-PF
- 6) Return grille shall be "Airguide" Model RV-GR
- 7) Ductwork shall be 24 gauge galvanized steel.
- 8) Electric heater shall be 1500 Watt, Center flow heater with built in electric fan, 120V base, suitable for surface mounting. Stock #23454 with 23466 housing.
- 9) Toilet shall be American Standard, 2108-SR, "Elongated Cadet" with "AguaGuard" tank liner and open front seat.
- 10) Lavatory shall be wall hung American Standard, 0355-012, "Tacome Lavatory", 20" x 18" with 4" centers, and wall bracket. Fittings shall be Delta, Series 500, Model 520, or American Standard "Ceramix" Model 2000-101, single lever, central faucet with pop-up drain.
- 11) Shower shall be Universal-Remble, "Sumit" 365" Model 6066R with 4539-0055 flange base assembly with grab bar and vacuum breaker. Delta Series 600, Model 603, or American Standard "Ceramic" Model 2000-500 with pressure balance, and stops.
- 12) Service sink shall be American Standard, "Takewell" service sink Model 7692-023, 18" x 22", enameled cast-iron. Provide with wall hanger, 3" P-trap, and American Standard "Heritage" service sink faucet #8340-242.
- 13) Kitchen sink shall be Elkay, simple compartment, 18 gauge stainless steel sink, Model LR-2222, 19 x 16 x 7 1/2, with a four hole faucet deck. Fittings shall be Delta Series 400, Model 400, or American Standard "Ceramic" Model 2000-641, faucet with separate spray. Drain shall be a stainless body Duo strainer with cap strainer.
- 14) Sprinkler head shall be Intermediate range, Viking "Micromatic" with chrome plated frame.
 - a) Bishops:
 - b) Water piping shall be soft-drawn type-L copper with flare type fittings.
 - c) Water piping shall be Type-L drawn copper with wrought copper or bronze fittings and 95-5 solder.
 - d) Sanitary waste and vent piping:
 - 1) Below grade: hwy or hubless, standard weight cast iron.
 - 2) Above grade: schedule 40 galvanized steel, service weight cast iron or 4" DWV copper piping to be schedule 40 PVC with solvent welded joints or type-K soft drawn copper.
 - e) All interior water piping shall be insulated. Insulation shall be 1" fiberglass with an all service gasket or 1" "Yamaflo".
- 15) Water heater shall be a Bradford-White Model M2005S, 20 gallon water heater with a 6 gph recovery of 100°F.
- 16) All piping shall be installed in accordance with the National Plumbing Code, and all other locally applicable requirements.
- 17) All piping shall be inspected prior to concealing: underground, in wall, ceilings, etc.

XVI ELECTRICAL

- 1) Electrical work is to comply with National Electric Code and other applicable codes and regulations. Electrical items are located on drawings P-1 (Site service and pump station), A-2 (Electric Panel), wall outlets, light switches, emergency lighting, A-3 (Light Fixtures), and M-1 (Furnace, electric water heater and unit heater). Work is to be supervised by a Certified Master Electrician and inspected before being covered.

STATE OF VERMONT
DEPARTMENT OF STATE BUILDINGS
AGENCY OF ADMINISTRATION
MONTPELIER, VERMONT

PLUMBING / HEATING

CIVIL AIR PATROL BUILDING
RUTLAND AIR FORCE BASE
NOTED CHANGES

SCALE: 1/4" = 1'-0"

DATE: 09/09/09

SCALE: A.N.

REVISIONS:

DATE: 09/09/09

SCALE: A.N.

APPROVED BY: [Signature]

DATE: 09/09/09

SCALE: A.N.

DWG NO: A-1