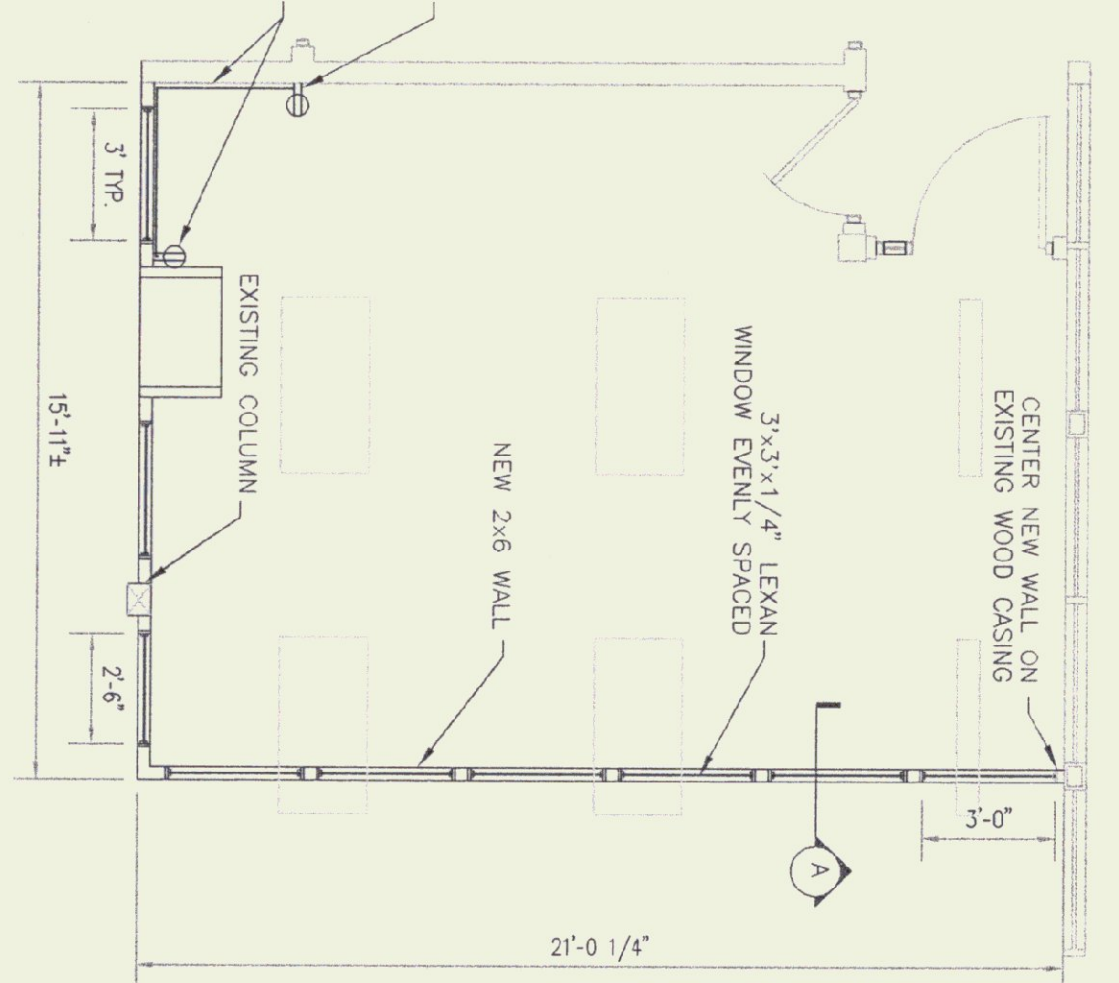


FIRST FLOOR PLAN
1/8" = 1'-0"

INSTALL WIREMOLD BOX TO EXTEND CURRENT BOX AND INSTALL NEW RECEPTACLE WITH COVER PLATE. (COLOR: W/OT)
FINISH NEW WIREMOLD SERIES 200 FROM EXISTING OUTLET TO LOCATION SHOWN. INSTALL NEW COVER PLATE (COLOR: W/OT) COMPLY WITH ALL FEDERAL, STATE, AND LOCAL CODES. ALL MATERIAL AND METHODS PER N.E.C.



NEW WALL PLAN
1/4" = 1'-0"

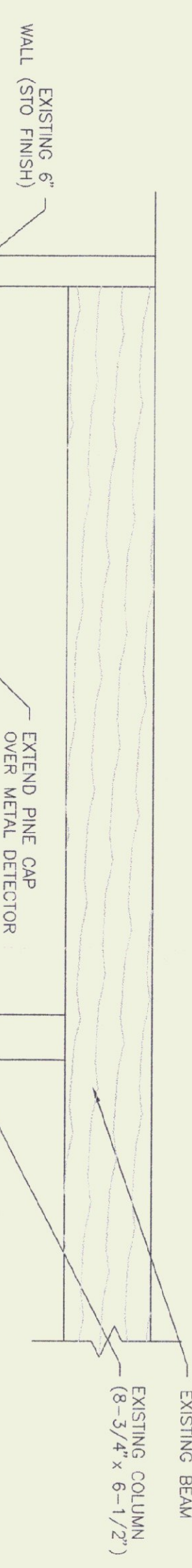
NOTES:

MATERIALS:
ALL LUMBER MUST COMPLY WITH #200 AMERICAN SOFTWOOD LUMBER STANDARD INCLUDING WOOD GROUNDS, FRAMING, BLOCKING, AND SHEATHING.
PROVIDE STANDARD GRADE 2"x4" STUD FRAMING FOR AREAS NOTED BLOCKING TO BE STANDARD GRADE 2"x4".

FASTENERS AND ANCHORAGES:
PROVIDE SIZE, TYPE, MATERIAL AND FINISH AS INDICATED AND AS RECOMMENDED BY APPLICABLE STANDARDS, COMPLYING WITH APPLICABLE FEDERAL STANDARDS FOR NAILS, SCREWS, BOLTS, NUTS, AND ANCHORING DEVICES.
FASTEN 2"x4" BOTTOM PLATE TO MARBLE FLOOR BY PILOT DRILLING MARBLE O.C. INSTALLING 5/16" x 3" PHILLIPS HEAD TAPCON THREADED ANCHORS 2'-0" O.C. INSTALL ANCHORS IN PAIRS, NOT STAGGERED TO PREVENT CURLING OR MOVEMENT OF 2x4.
SCREW OR NAIL FRAMING MATERIAL FIRMLY AND SECURELY TO PREVENT MOVEMENT, SHIFTING, OR WARPING OF FRAMING MEMBERS AND FINISHED WALL.
INSTALL THE T&G PINE SHEATHING NETLY. ALL CUTS AND MITERS SHALL BE FITTED ACCURATELY TO AVOID LEAKING FINISHES.
DO NOT INSTALL SPLIT OR CHECKED MATERIAL.
ALL PINE T&G SHEATHING SHALL BE BLIND NAILED USING APPROPRIATELY SIZED COMMON FINISH NAILS.

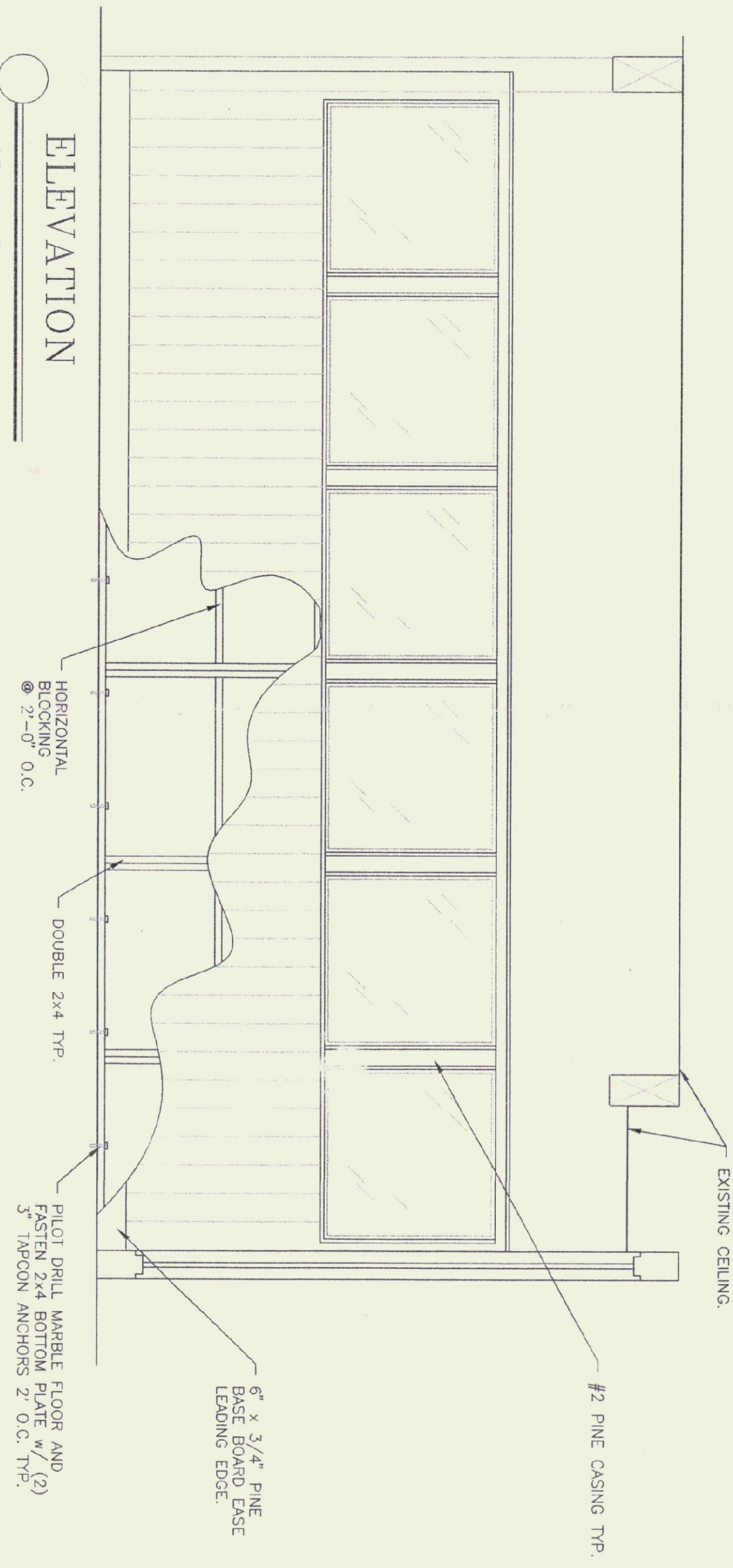
FINISHES - EXPOSED PINE
ALL MATERIAL TO RECEIVE TRANSPARENT FINISHES USING "MIN-WAX" OR APPROVED PRODUCT OF EQUAL QUALITY.
PREPARE ALL EXPOSED SURFACES BY SANDING SMOOTH AND CLEANING ALL DUST FROM SURFACE.
APPLY ONE (1) TRANSPARENT SEAL COAT USING PENETRATING SEALER.
APPLY TWO (2) COATS SATIN FINISH. SAND SURFACES SMOOTH BETWEEN COATS.
FILL ALL NAIL SET HOLES WITH WAX SEALER IN MATCHING COLOR AFTER FINISHES ARE APPLIED.

COORDINATION:
CONTRACTOR TO COORDINATE WORK SCHEDULE AND USE OF THE FACILITIES INCLUDING ELECTRICAL, TOLLIES, AND STORAGE OF MATERIALS WITH THE AIRPORT SECURITY DIVISION AND THE AIRPORT SECURITY DIVISION. THE SECURITY OF THE TERMINAL AND ITS PASSENGERS MUST BE MAINTAINED AS A TOP PRIORITY. THE CONTRACTOR WILL BE REQUIRED TO APPLY FOR AND RECEIVE ALL NECESSARY PERMITS FOR CONSTRUCTION OF THIS PROJECT.



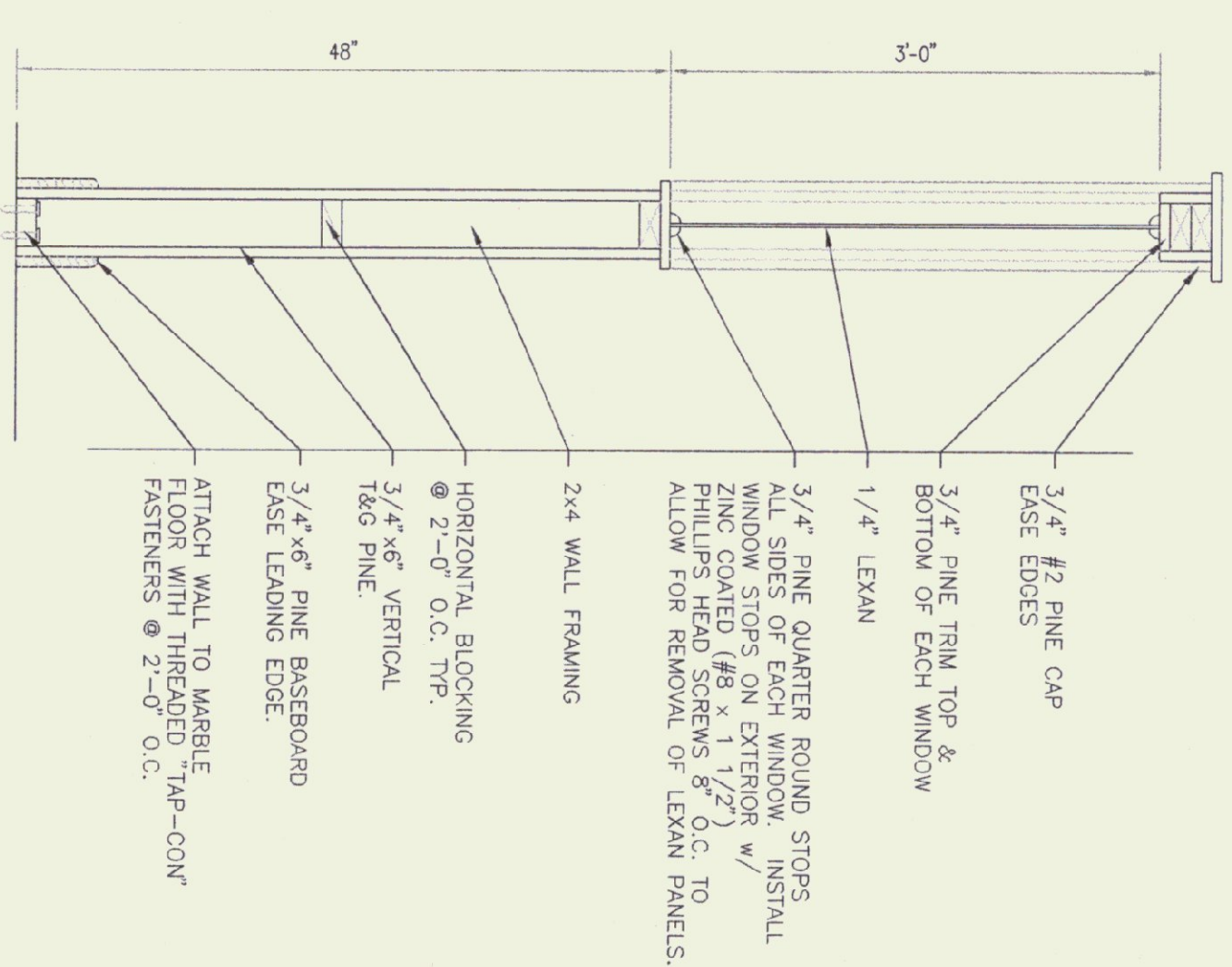
ELEVATION
1/2" = 1'-0"

EXISTING BEAM (8'-3/4" x 8'-1/2")
EXISTING COLUMN (8'-3/4" x 8'-1/2")
EXISTING METAL DETECTOR
EXTEND PINE CAP OVER METAL DETECTOR
1/4" LEXAN w/ 3/4" TRIM AND 3/4" QUARTER ROUND STOPS
3/4" x 6" VERTICAL T&G PINE BLIND NAILED



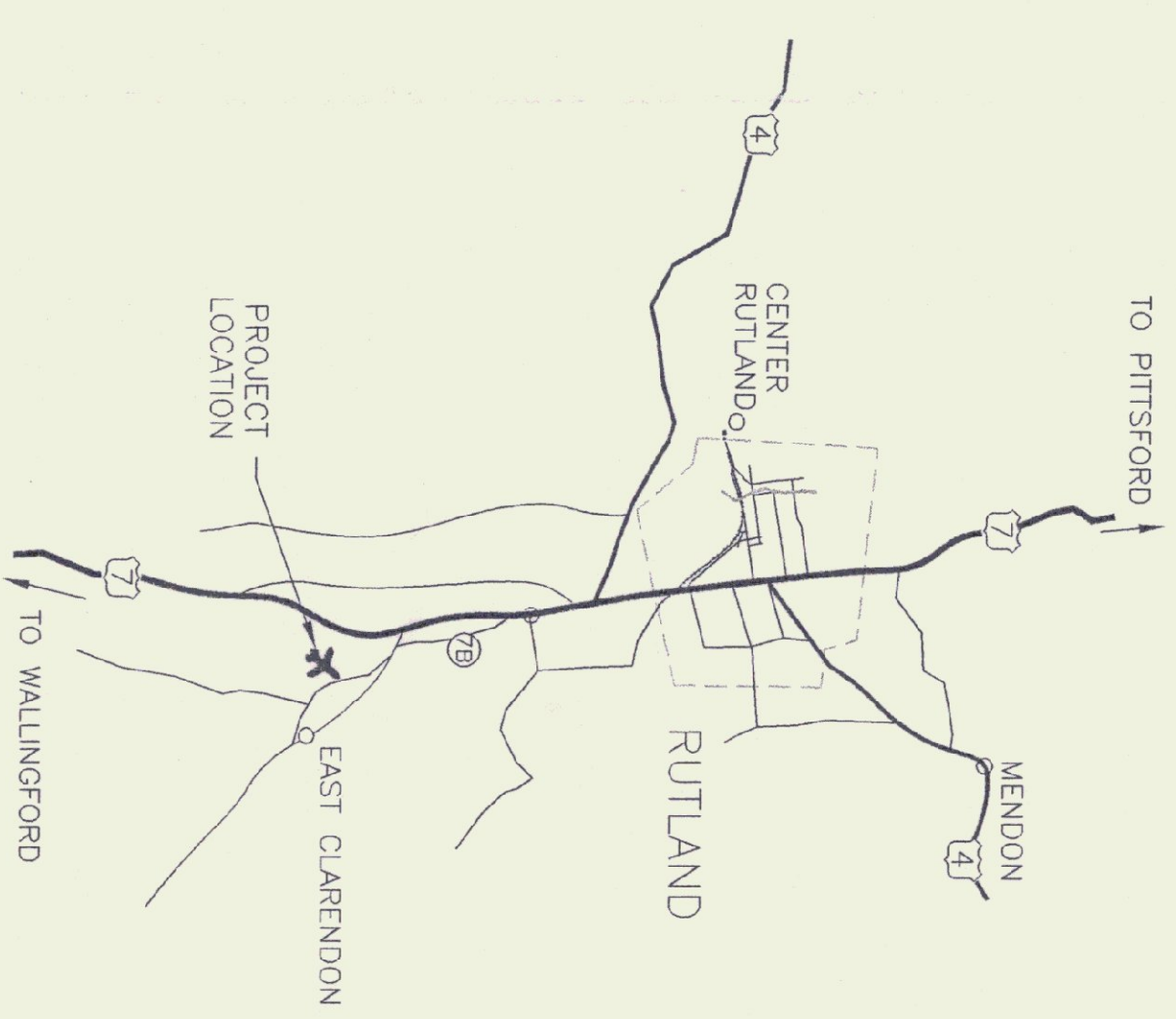
ELEVATION
1/2" = 1'-0"

EXISTING CEILING.
#2 PINE CASING TYP.
6" x 3/4" PINE BASEBOARD CASE LEADING EDGE.
DOUBLE 2x4 TYP.
PILOT DRILL MARBLE FLOOR AND FASTEN 2x4 BOTTOM PLATE w/ (2) 5" TAPCON ANCHORS 2' O.C. TYP.
HORIZONTAL BLOCKING @ 2'-0" O.C.



SECTION
1" = 1'-0"

3/4" #2 PINE CAP EASE EDGES
3/4" PINE TRIM TOP & BOTTOM OF EACH WINDOW
1/4" LEXAN
3/4" PINE QUARTER ROUND STOPS ALL SIDES OF EACH WINDOW. INSTALL ZINC COATED (#8 x 1 1/2") PHILLIPS HEAD SCREWS 8" O.C. TO ALLOW FOR REMOVAL OF LEXAN PANELS.
2x4 WALL FRAMING
HORIZONTAL BLOCKING @ 2'-0" O.C. TYP.
3/4" x 6" VERTICAL T&G PINE
3/4" x 6" PINE BASEBOARD EASE LEADING EDGE.
ATTACH WALL TO MARBLE FLOOR WITH THREADED TAP-CON FASTENERS @ 2'-0" O.C.



LOCATION MAP
N.T.S.

RUTLAND AIRPORT SECURITY RENOVATIONS PLAN & DETAILS

SCALE: AS NOTED
DATE: JAN 1997
DRAWN BY: G. D. NORWOOD
APPR. BY: <i>Merle Miller</i>

REVISIONS

RUTLAND SECURITY RENOVATIONS PLAN & DETAILS

A-1
1 OF 1



STATE OF VERMONT
Department of Buildings and General Services
Agency of Administration
Montpelier, Vermont

