

STATE OF VERMONT
RUTLAND AIRPORT
AMERICANS WITH DISABILITIES ACT COMPLIANCE PROGRAM

Clarendon, Vermont

April 26, 1994

Agency of Administration

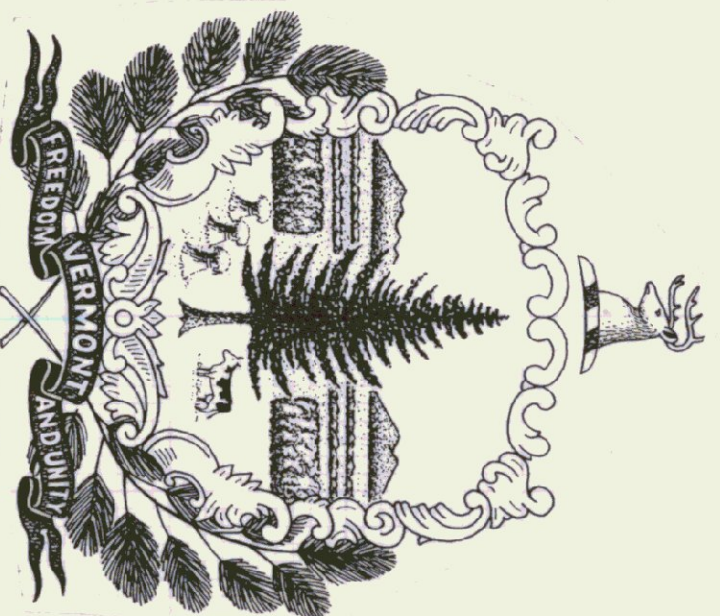
Department of State Buildings

John J. Zampieri, Commissioner

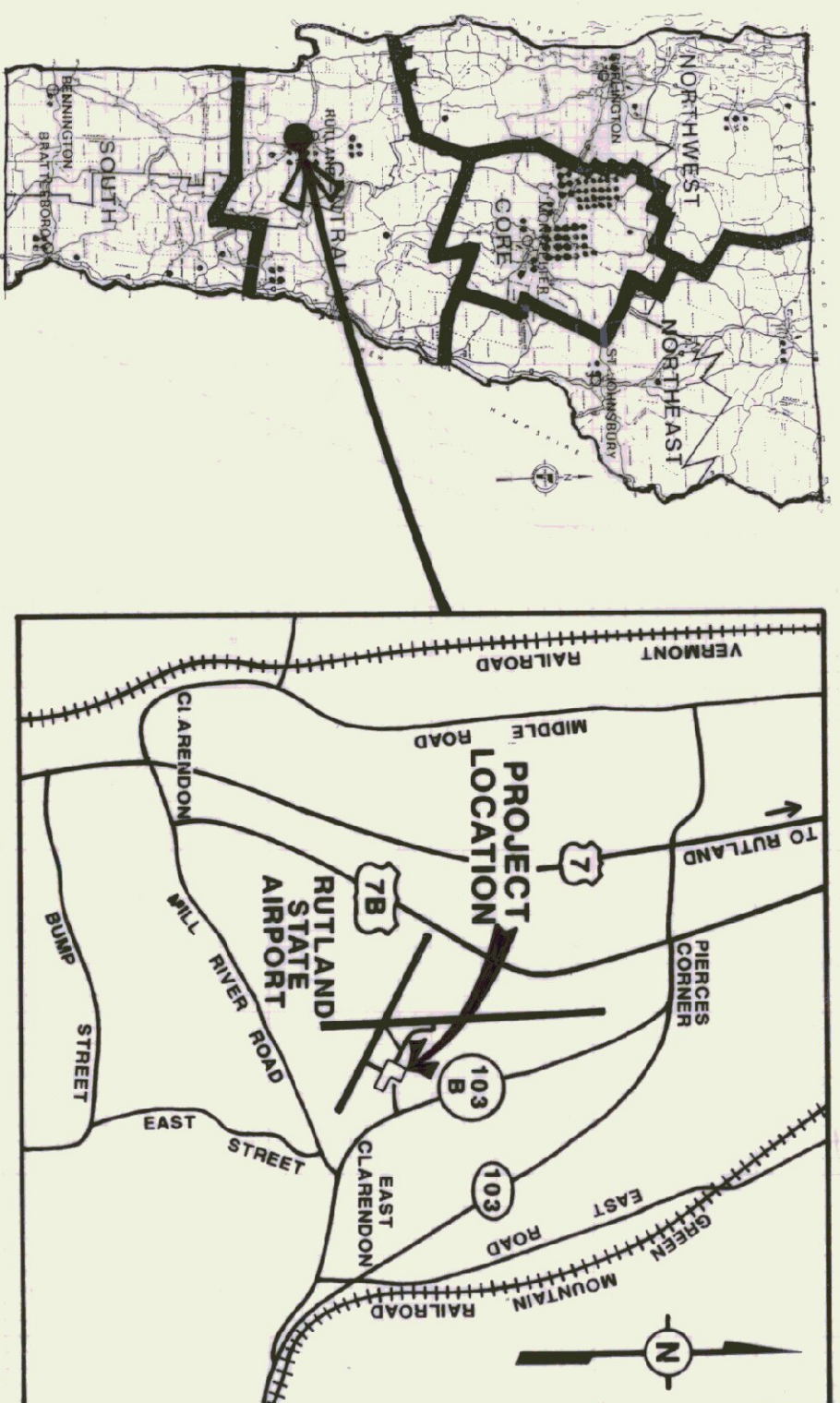
Agency of Transportation

Division of Rail, Air & Public Transportation

Patrick J. Garahan, Secretary

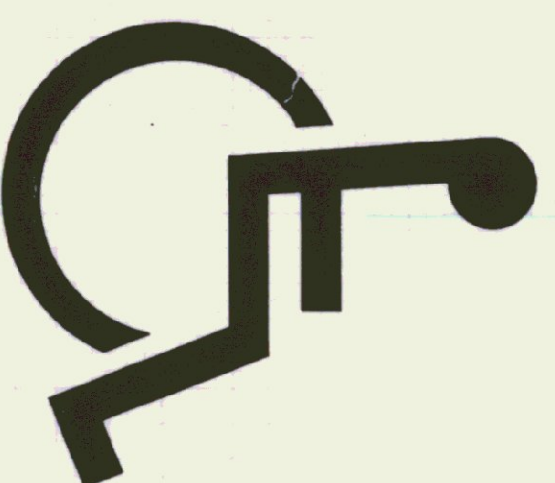


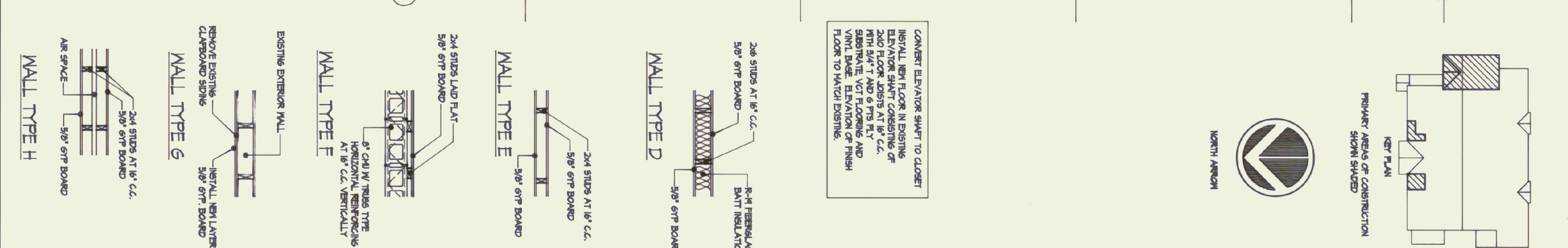
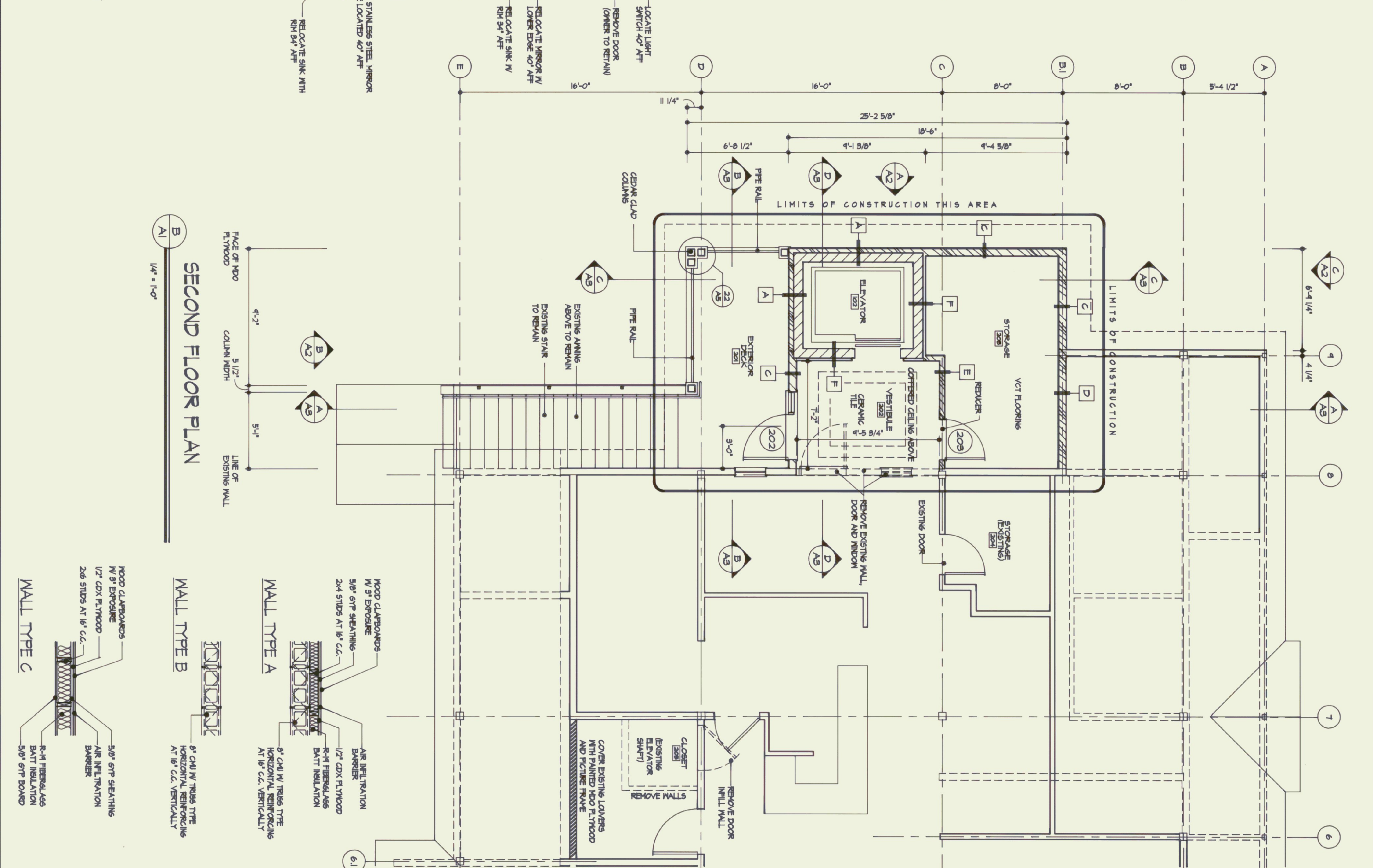
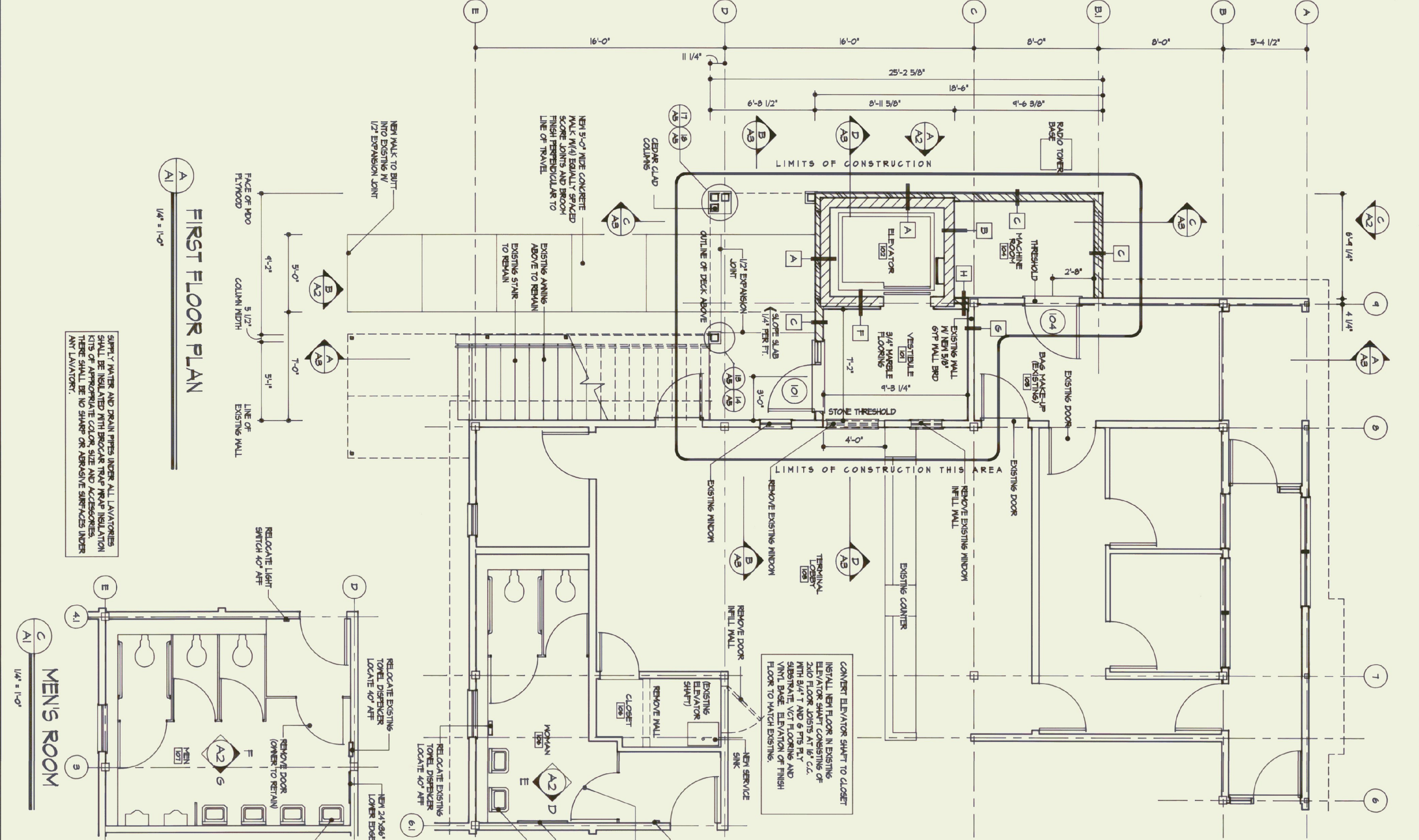
Governor Howard Dean, M.D.



INDEX OF DRAWINGS

ST-1 Site & Demo Plan
A-1 Plans
A-2 Elevations
A-3 Building Sections
A-4 Wall Sections
A-5 Details
S-1 Structural
E-1 Electrical First Floor
E-2 Electrical Second Floor
M-1 Mechanical First Floor
M-2 Mechanical Second Floor
M-3 Mechanical Details & Schedules





NO.	DATE	REVISIONS
1	4/28/94	RELEASED FOR BIDS
2	9/16/94	RELEASED FOR REVIEW
3	12/6/95	SUBMITTED FOR REVIEW
4	4/27/95	CONCEPTUAL REVIEW

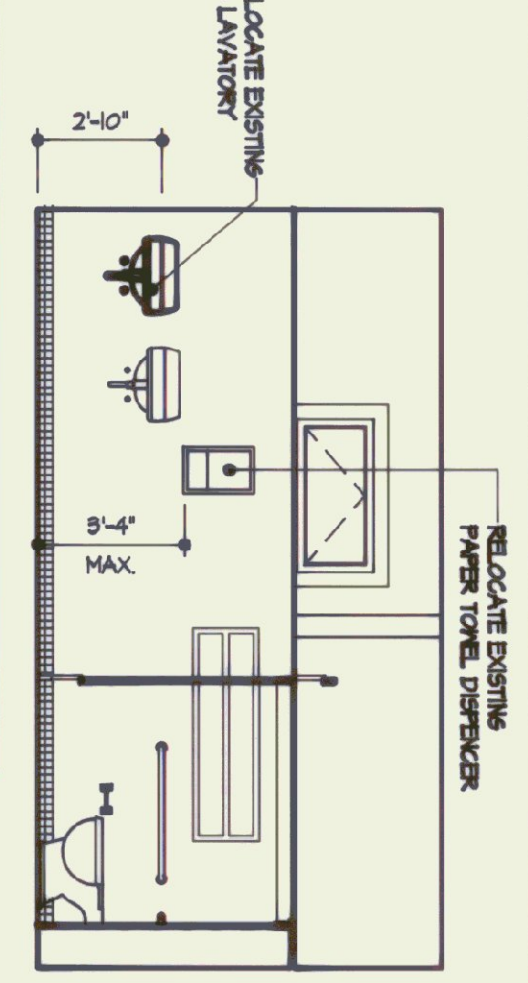
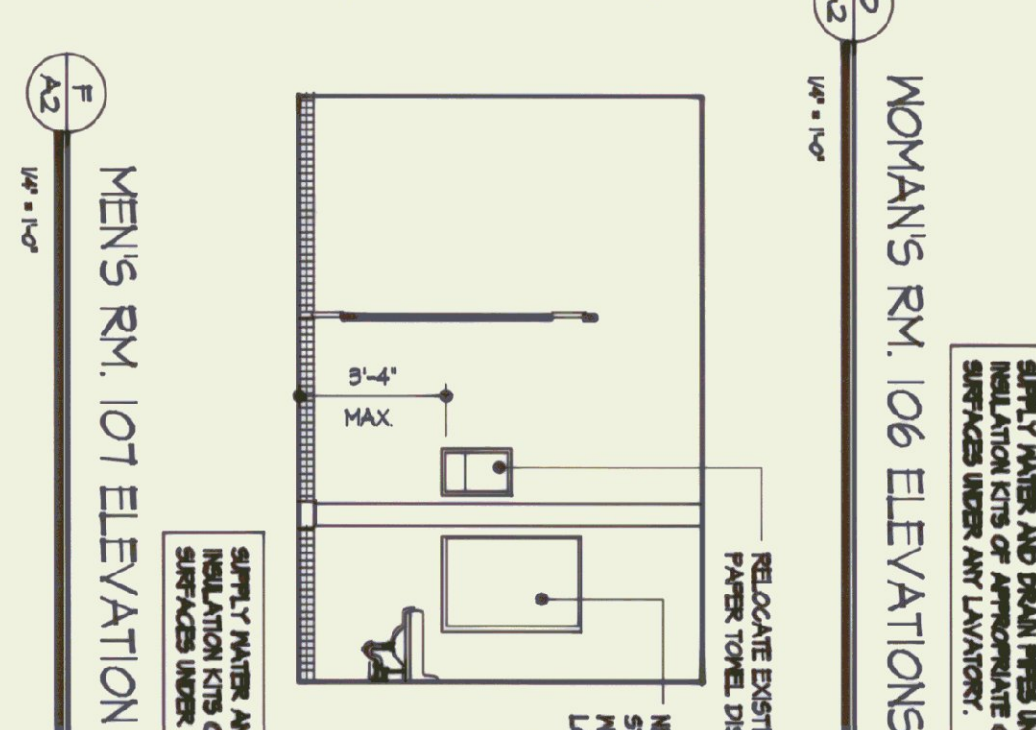
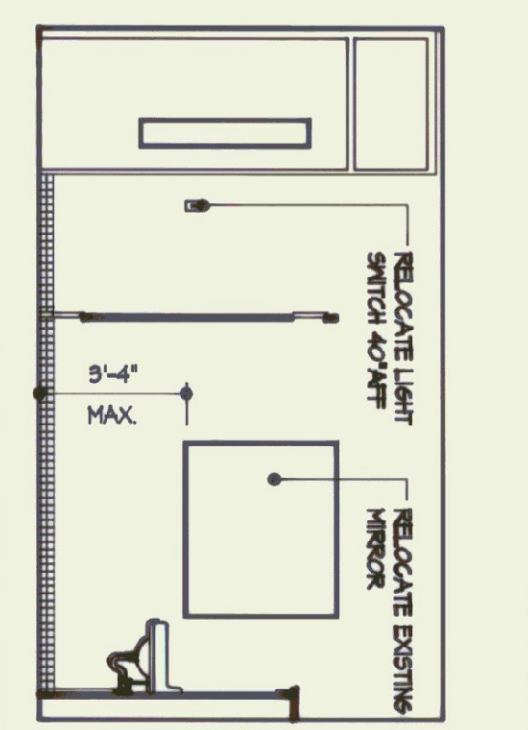
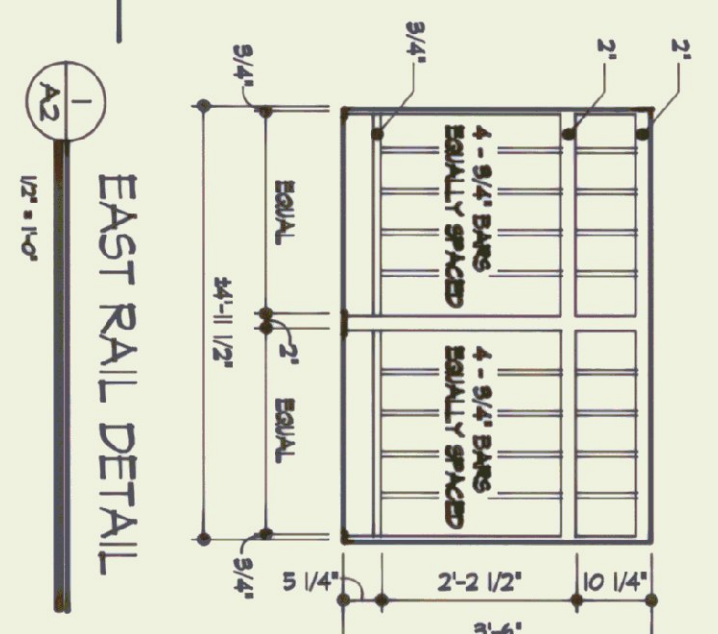
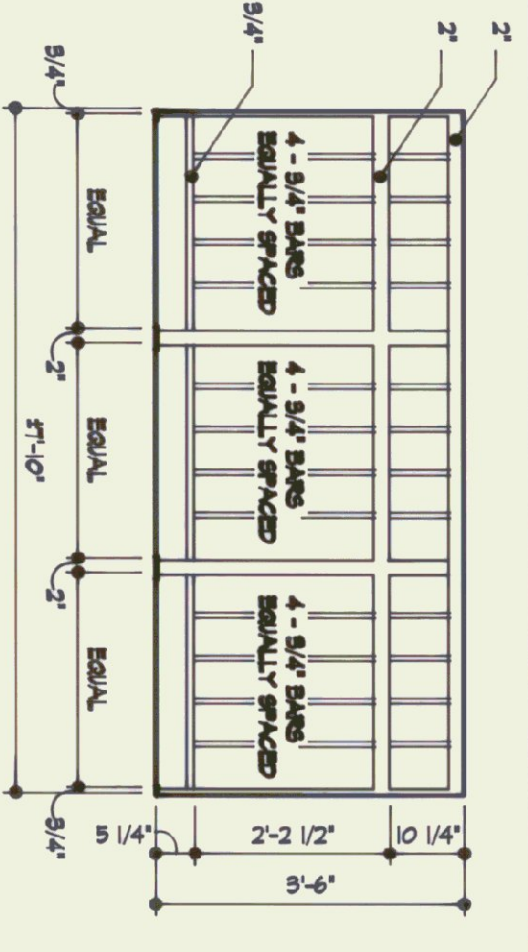
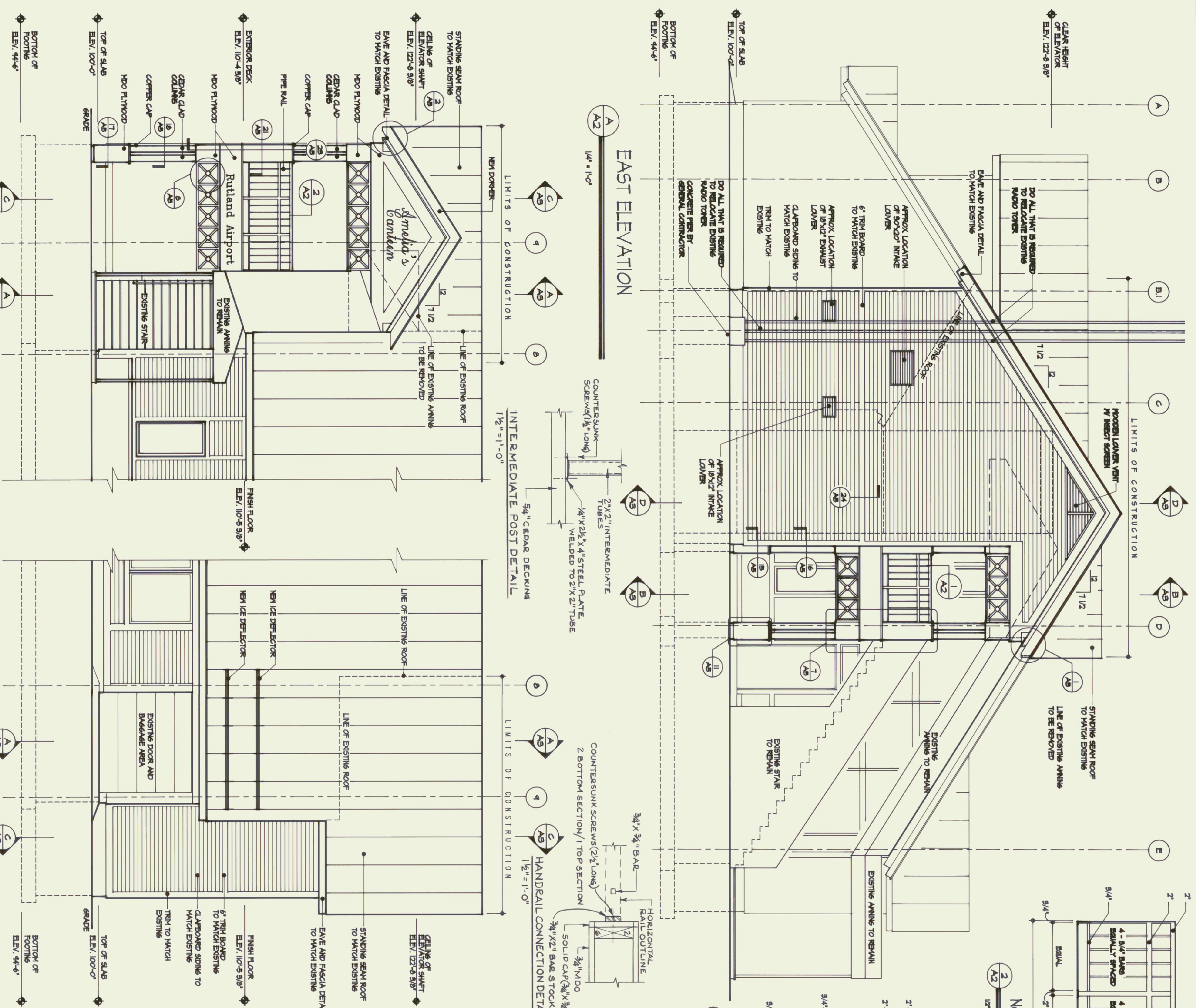
BROWNING ASSOCIATES
PLANNING AND ARCHITECTURE
54 1/2 CENTER STREET
RUTLAND, VERMONT 05701
PHONE: 802-778-8248 FAX: 802-778-8258

WV ENGINEERING
CONSULTING ENGINEERS
PO BOX 1464
KEENE, NEW HAMPSHIRE 03431
PHONE: 603-952-1007 FAX: 603-952-1005

RUTLAND STATE AIRPORT
STATE OF VERMONT
DEPARTMENT OF STATE BUILDINGS
2 GOVERNOR AIKEN AVENUE
MONTPELIER, VERMONT 05602

REGISTERED ARCHITECT
CHRISTOPHER P. BROWNING
No. 12706
STATE OF VERMONT

PROJECT: DATE: 8/19/95
DATE: 4/27/95
DATE: 12/6/95
DATE: 9/16/94
DATE: 4/28/94



RM. NO.	ROOM	FLOOR	MATERIAL	FINISH	BASE			WALLS			CEILING			REMARKS	
					N	E	M	N	E	M	N	E	M		
101	VESTIBULE	CONC.	MT	M	M	M	N	E	S	M	N	E	S	M	CONCRETE CEILING
102	ELEVATOR	NA	VCT	-	-	-	-	-	-	-	-	-	-	-	CEILING OF SHIRT TO BE 2\"/>
103	LOBBY	EXISTING	VCT	-	-	-	-	-	-	-	-	-	-	-	PAINT AND PAINT SURFACES DAMAGED IN CONSTRUCTION
104	MACHINE RM	CONC.	HANDGRER	V	V	V	CB	6	6	6	P	P	P	P	PAINT ONLY SURFACES DAMAGED IN CONSTRUCTION
105	BAGGAGE	EXISTING	EXISTING	-	-	-	-	-	-	-	-	-	-	-	
201	EXT. DECK	WOOD	WOOD	-	-	-	-	-	-	-	-	-	-	-	
202	VESTIBULE	WOOD	CT	CT	CT	CT	CT	6	6	6	P	P	P	P	VARIES
203	STORAGE	WOOD	VCT	V	V	V	V	6	6	6	P	P	P	P	VARIES

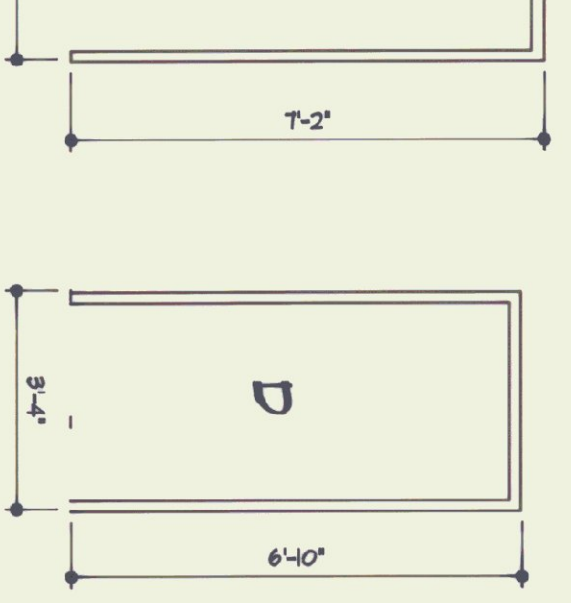
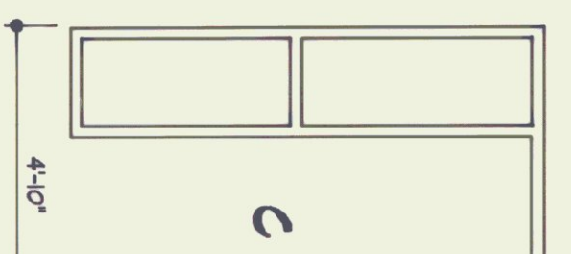
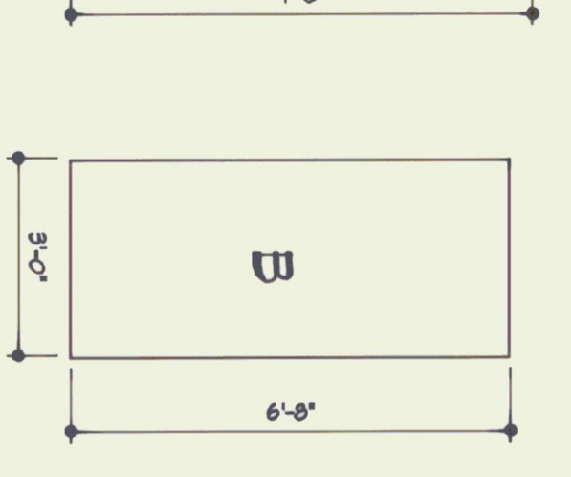
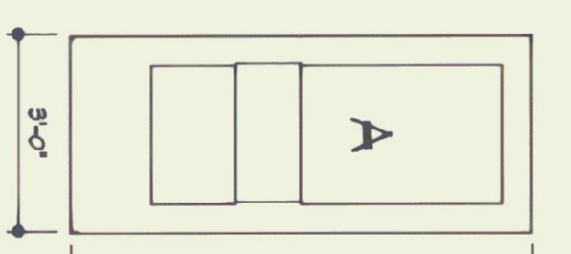
LEGEND: MT - MARBLE TILE VCT - VINYL TILE CT - CERAMIC TILE M - WOOD CB - CONCRETE BLOCK C - STYRUM P - PAINT

DOOR SCHEDULE

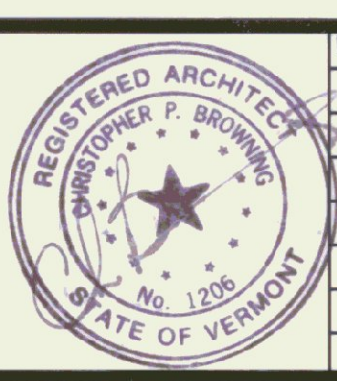
NO.	TO FROM	HAND	MATERIAL	HEIGHT	WIDTH	THICK	RATINGS	ELEV	HEAD	JAMB	SILL	ELEV
101	EXT. 101	LH	INS. MTL.	7'-0"	3'-0"	1 3/4"			GLASS			A
104	104 105	RHR	METAL	6'-9"	3'-0"	1 3/4"			HELD AND GLASS	NA		A
202	EXT. 202	LH	INS. MTL.	7'-0"	3'-0"	1 3/4"			NONE	90 MIN.		B
203	203 202	RH	METAL	6'-9"	3'-0"	1 3/4"			TYPED AND GLASS	NA		A
									NONE	45 MIN.		B

FRAME SCHEDULE

NO.	MATERIAL	HEIGHT	WIDTH	THICK	RATINGS	ELEV	HEAD	JAMB	SILL	CLOSER	THRESHOLD	SPRING HINGE	1/2 PR BUTTS	PANIC DEVICE	FLOOR BUMPER	KICK PLATE	WALL BUMPER	WEATHERSTRIPPING	DOOR BOTTOM	FALCON LOCKSET NO. M501-QM
101	6 GA. METAL	7'-2"	4'-10"	7 3/4"	NA	C	1/AS	2/AS	3/AS	●	●	●	●	●	●	●	●	●	●	●
104	6 GA. METAL	6'-10"	3'-4"	7 3/4"	90 MIN.	D	5/AS	6/AS	7/AS	●	●	●	●	●	●	●	●	●	●	●
202	6 GA. METAL	7'-2"	4'-10"	7 3/4"	NA	C	1/AS	2/AS	3/AS	●	●	●	●	●	●	●	●	●	●	●
203	6 GA. METAL	6'-10"	3'-4"	5 3/4"	45 MIN.	D	5/AS	6/AS	7/AS	●	●	●	●	●	●	●	●	●	●	●



NO.	REVISIONS	DATE
1	CONCEPTUAL REVIEW	4/21/93
2	SUBMITTED FOR REVIEW	12/5/93
3	RELEASED FOR REVIEW	3/18/94
4	RELEASED FOR BIDS	4/25/94



RUTLAND STATE AIRPORT
STATE OF VERMONT
DEPARTMENT OF STATE BUILDINGS
2 GOVERNOR AIKEN AVENUE
MONTPELIER, VERMONT 05602

WV ENGINEERING
CONSULTING ENGINEERS
PO BOX 1464
KEENE, NEW HAMPSHIRE 03431

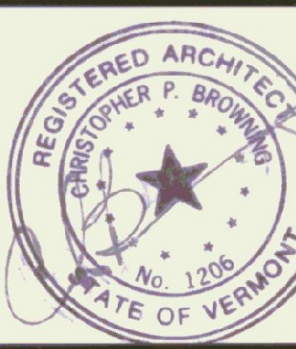
BROWNING ASSOCIATES
PLANNING AND ARCHITECTURE
54 1/2 CENTER STREET
RUTLAND, VERMONT 05701

DESIGNED BY: CPB
DRAWN BY: SERCHB
CHECKED BY: TC
ELEVATIONS
SHEET NUMBER
A2
JOB NO. 820201
DATE: SEPTEMBER 1993

PHONE: 802-778-8248 FAX: 802-778-8285

PHONE: 603-852-1001 FAX: 603-852-1005

NO.	REVISIONS	DATE
1	SUBMITTED FOR REVIEW	1/29/84
2	RELEASED FOR REVIEW	5/16/84
3	RELEASED FOR BID	4/25/84

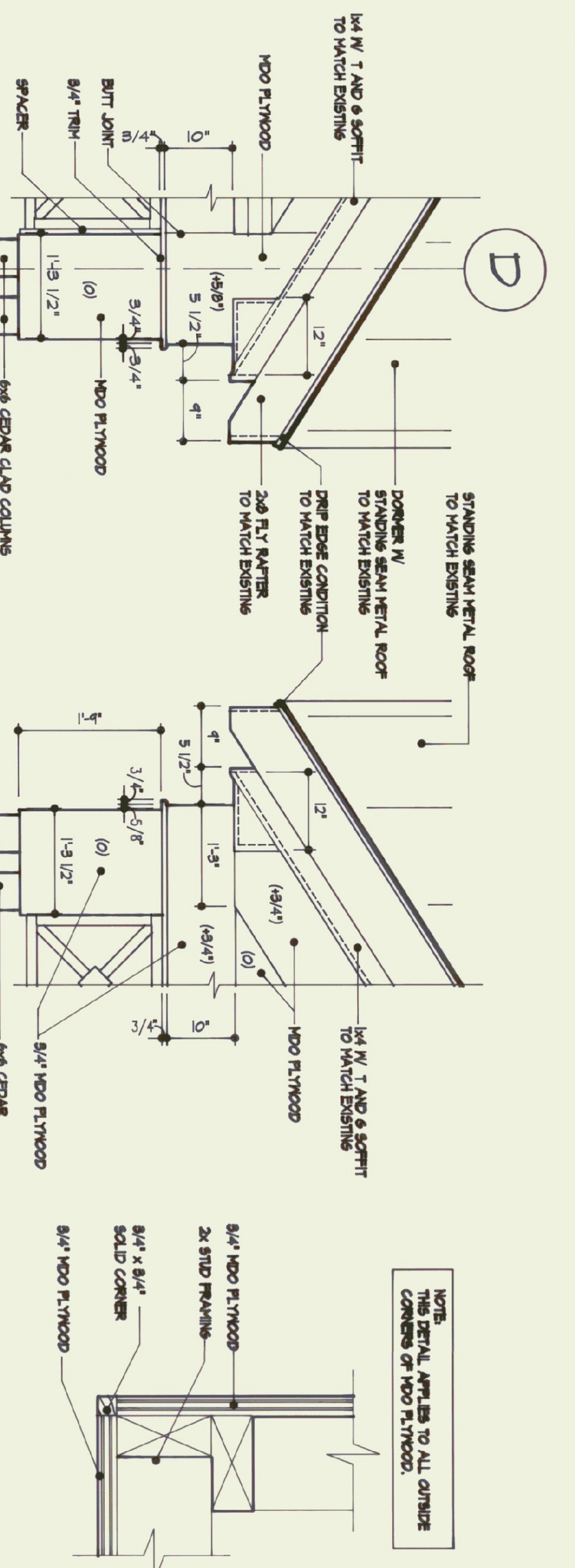


RUTLAND STATE AIRPORT
STATE OF VERMONT
DEPARTMENT OF STATE BUILDINGS
2 GOVERNER AIKEN AVENUE
MONTPELIER, VERMONT 05602

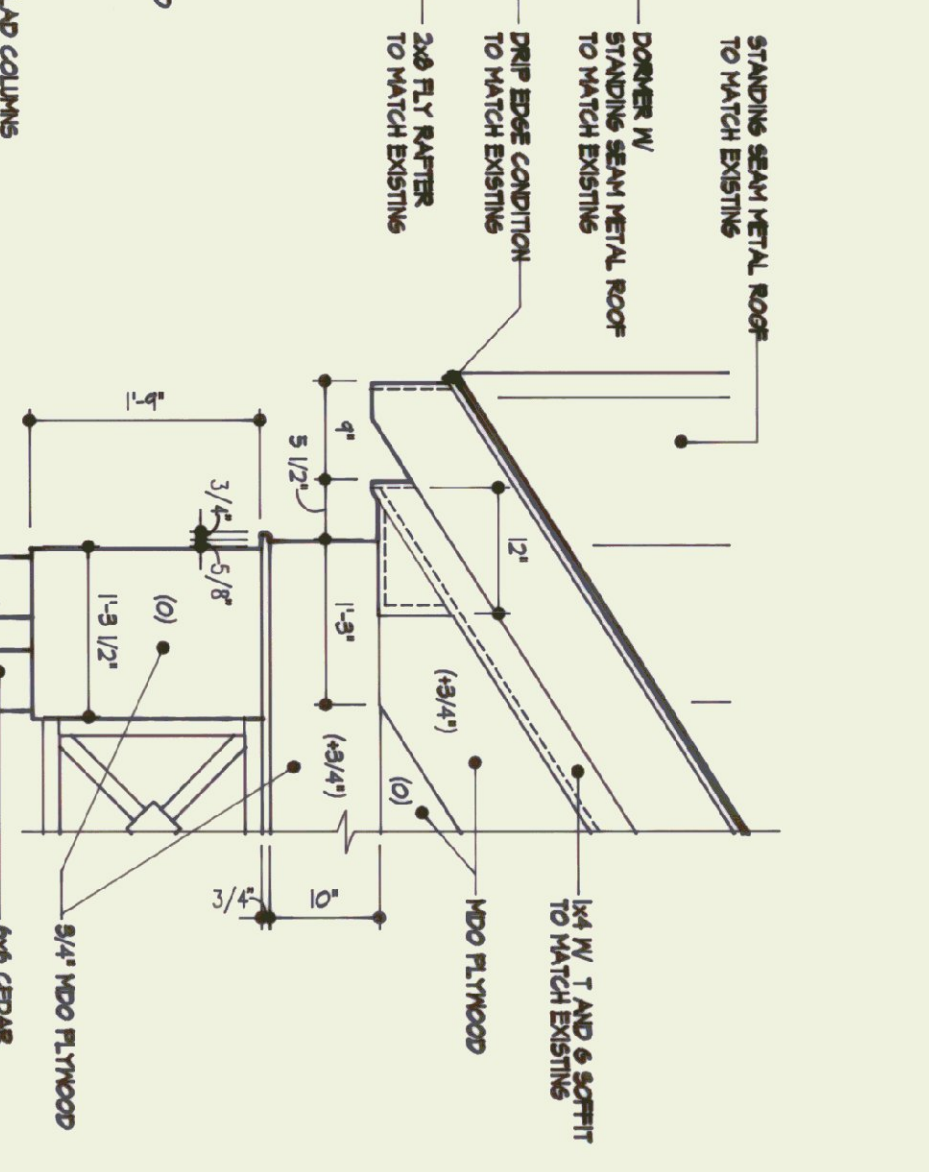
WV ENGINEERING
CONSULTING ENGINEERS
PO BOX 1464
KEENE, NEW HAMPSHIRE 03431

BROWNING ASSOCIATES
PLANNING AND ARCHITECTURE
54 1/2 CENTER STREET
RUTLAND, VERMONT 05701

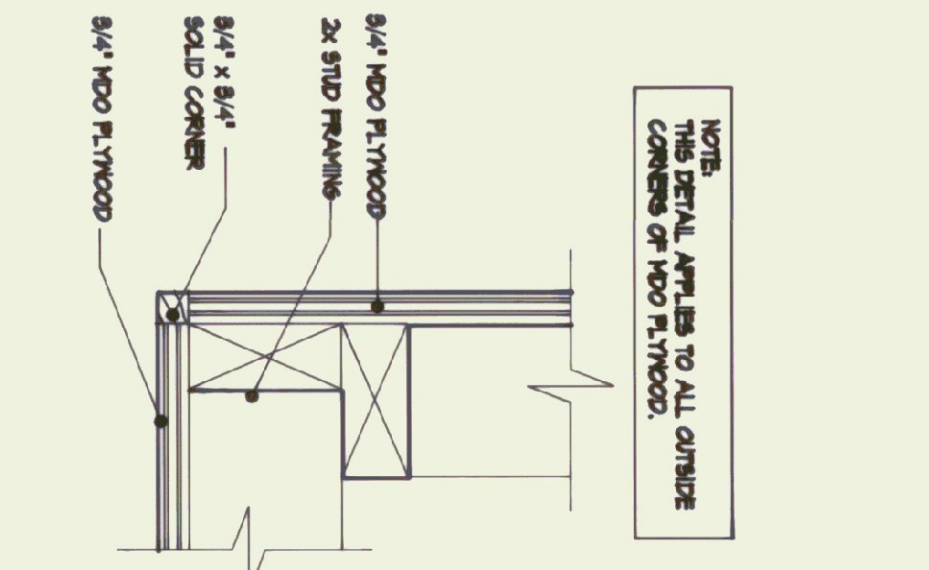
PHONE: 802-778-8245 FAX: 802-778-8295
PHONE: 603-882-7007 FAX: 603-882-7005



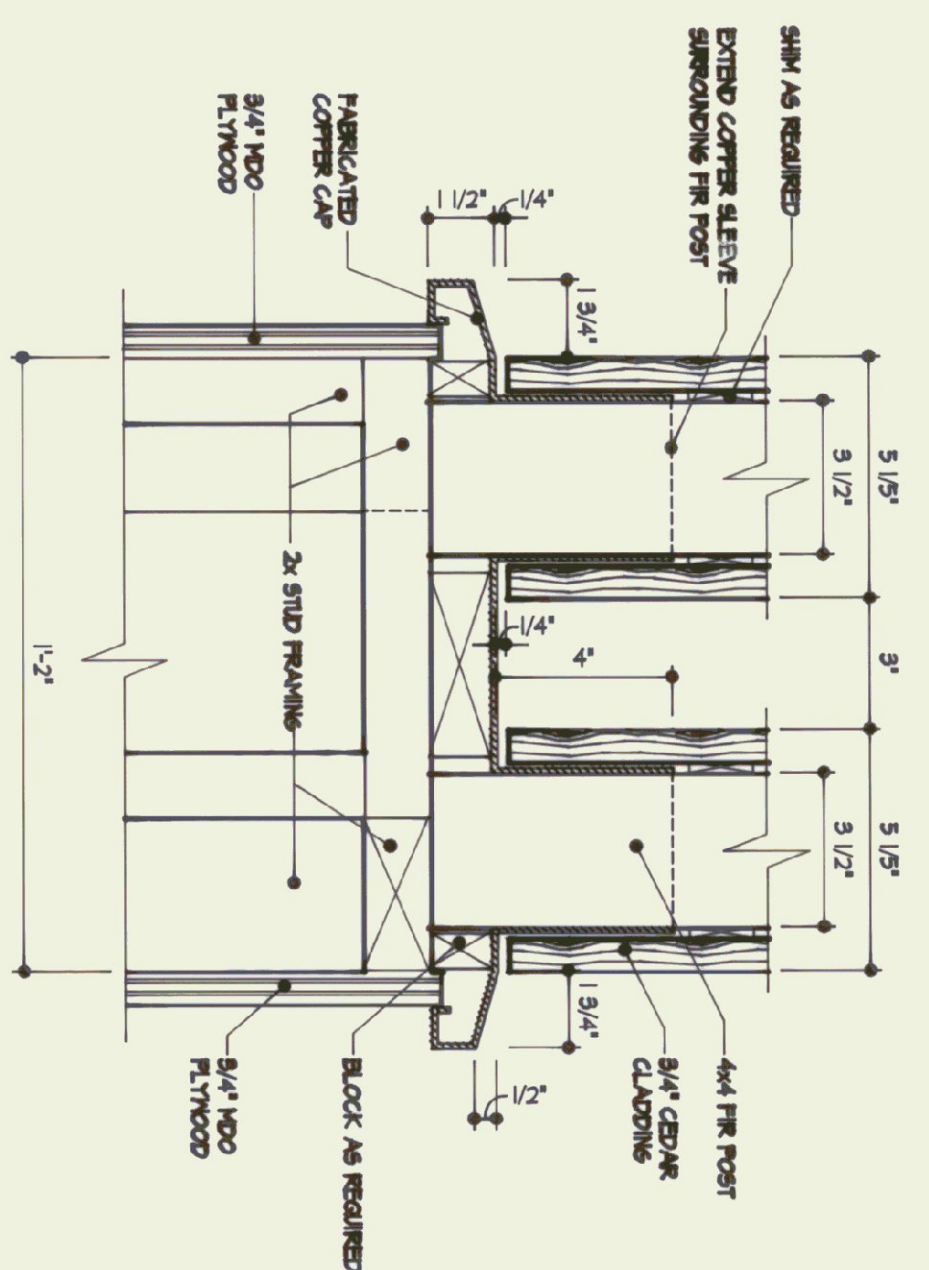
1 EAST RAKE FASCIA DETAIL
8/4\"/>



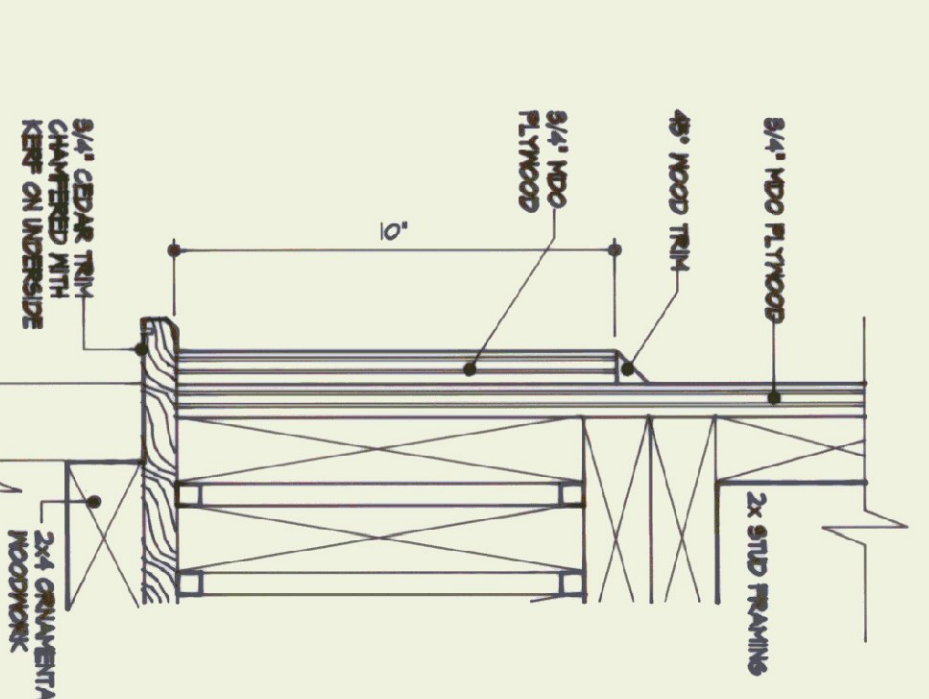
2 NORTH RAKE FASCIA DETAIL
8/4\"/>



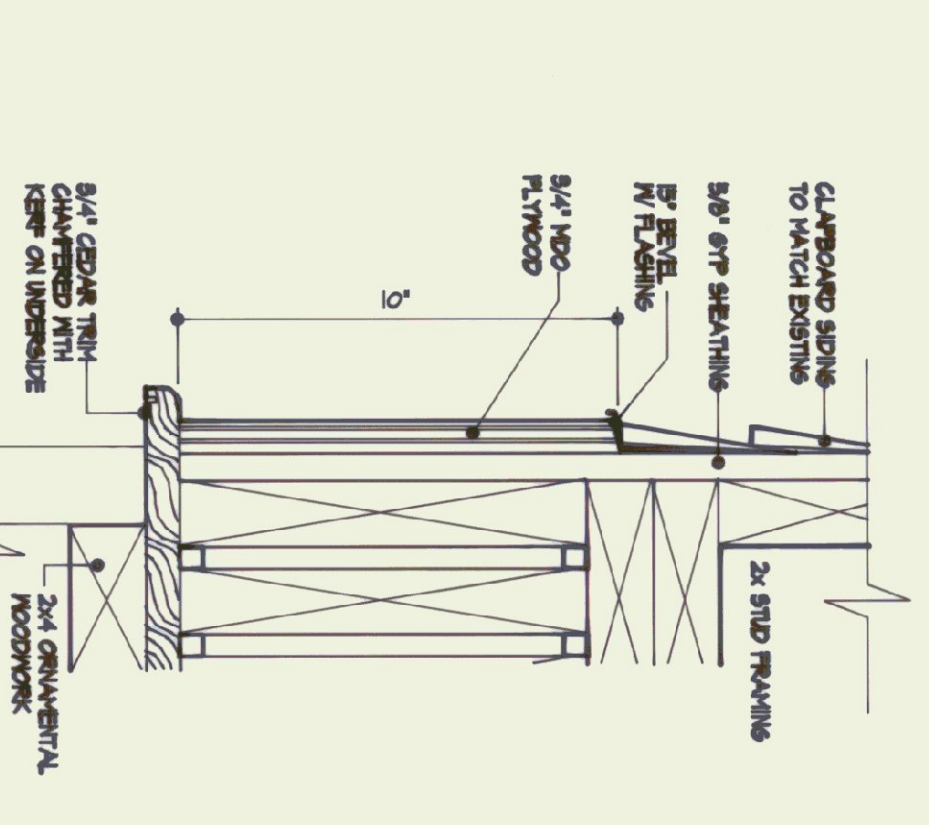
3 TYP. CORNER TRIM DETAIL
8/4\"/>



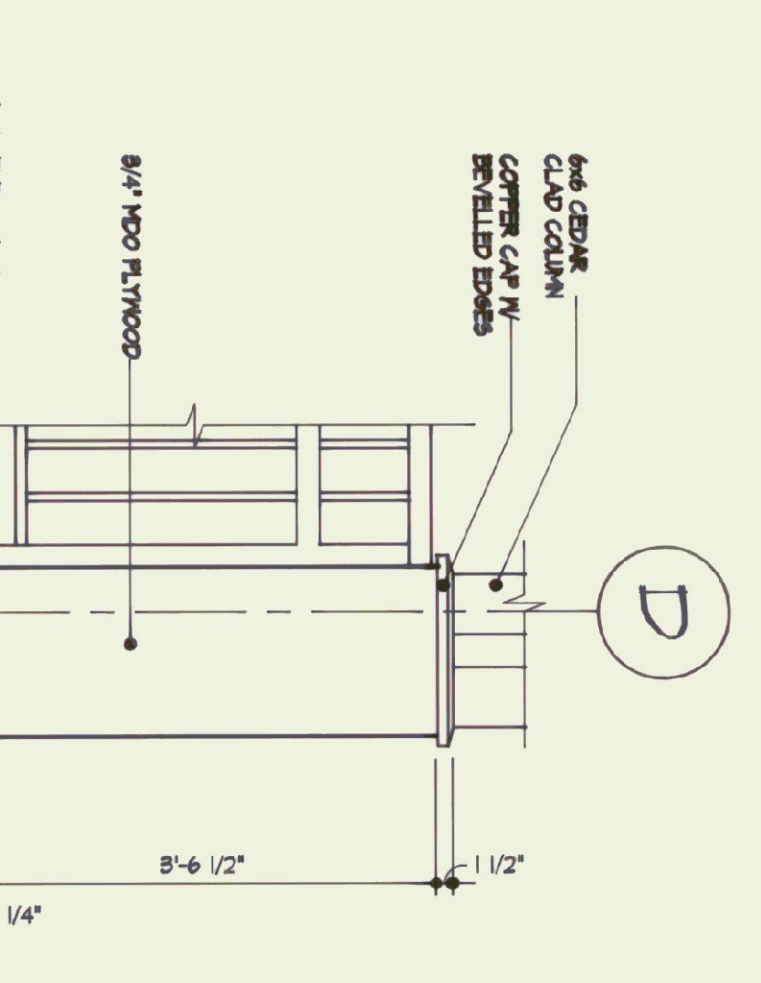
4 COPPER CAP DETAIL
8/4\"/>



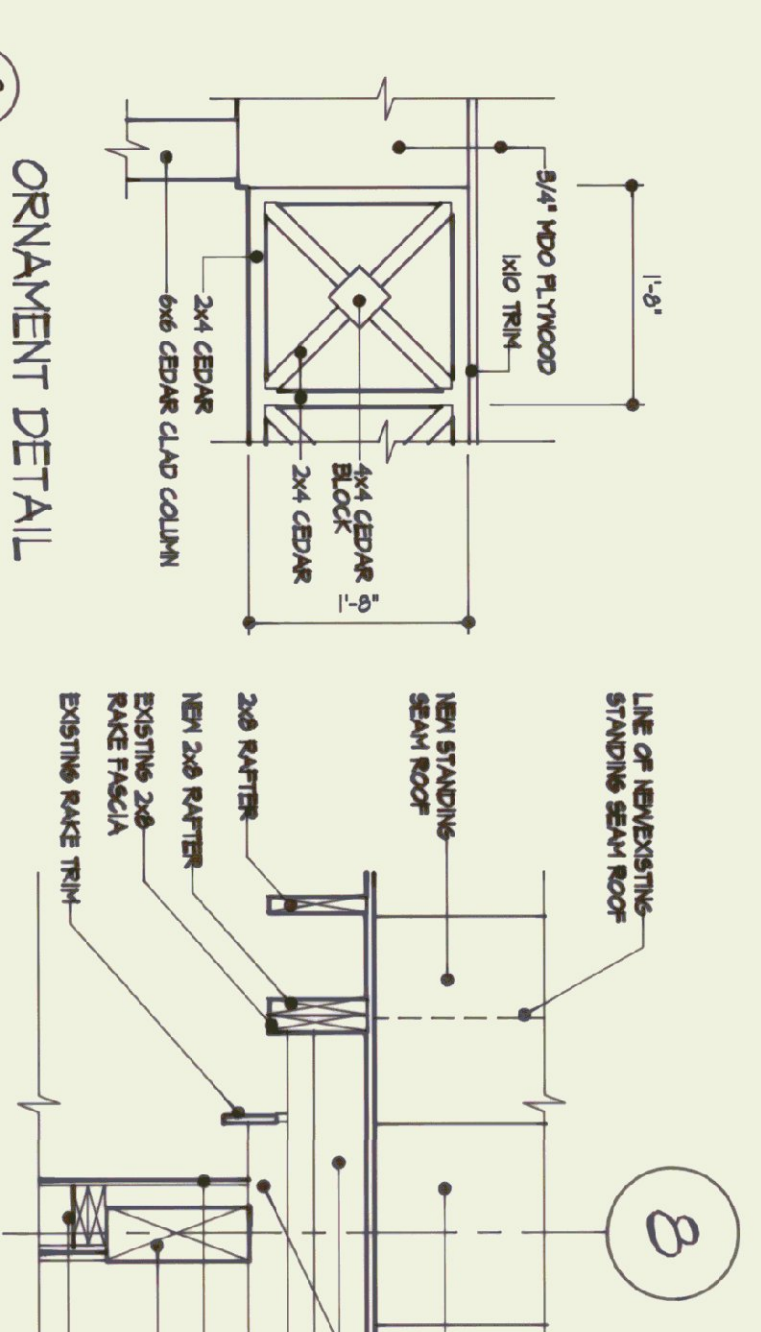
5 TRIM DETAIL
8/4\"/>



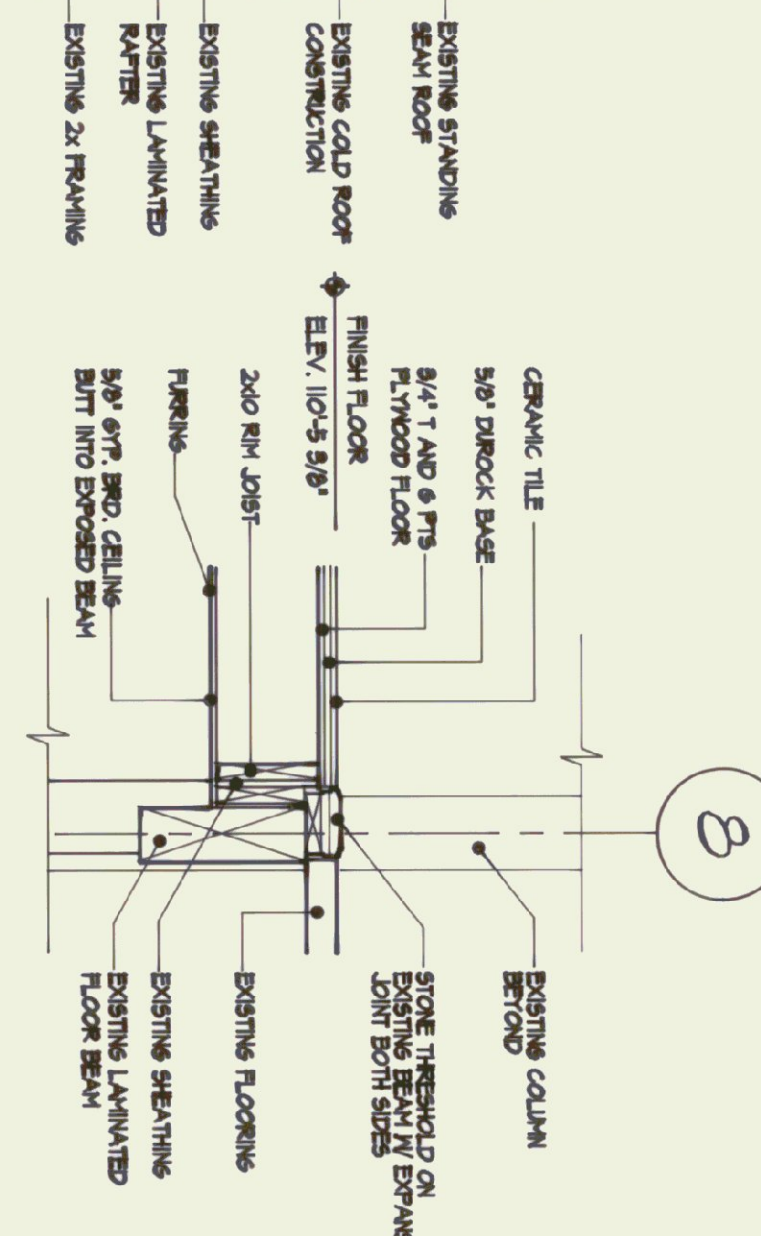
6 TRIM DETAIL
8/4\"/>



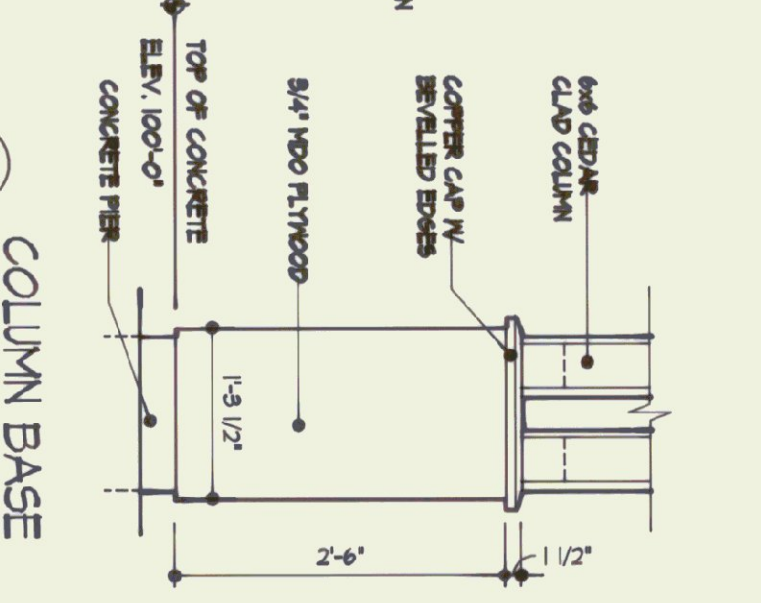
7 ORNAMENT DETAIL
8/4\"/>



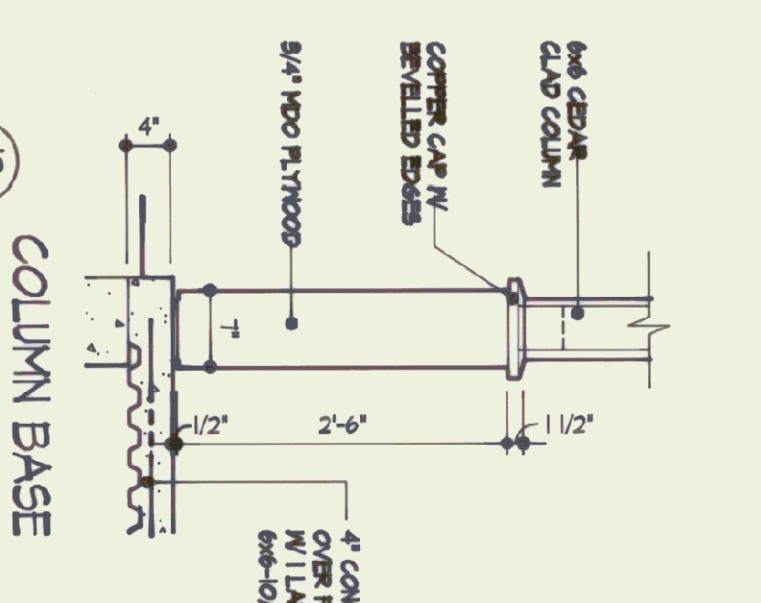
8 RAKE CONNECTION SECTION DETAIL
8/4\"/>



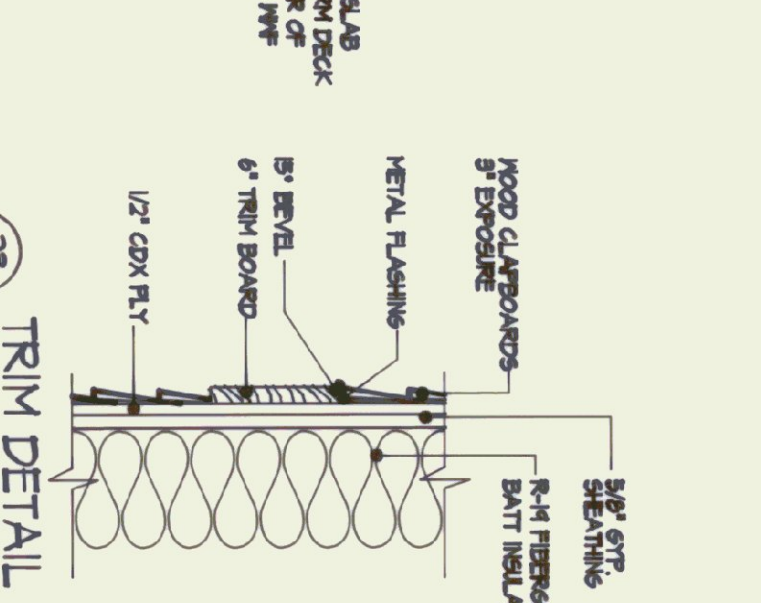
9 EXISTING BEAM SECTION DETAIL
8/4\"/>



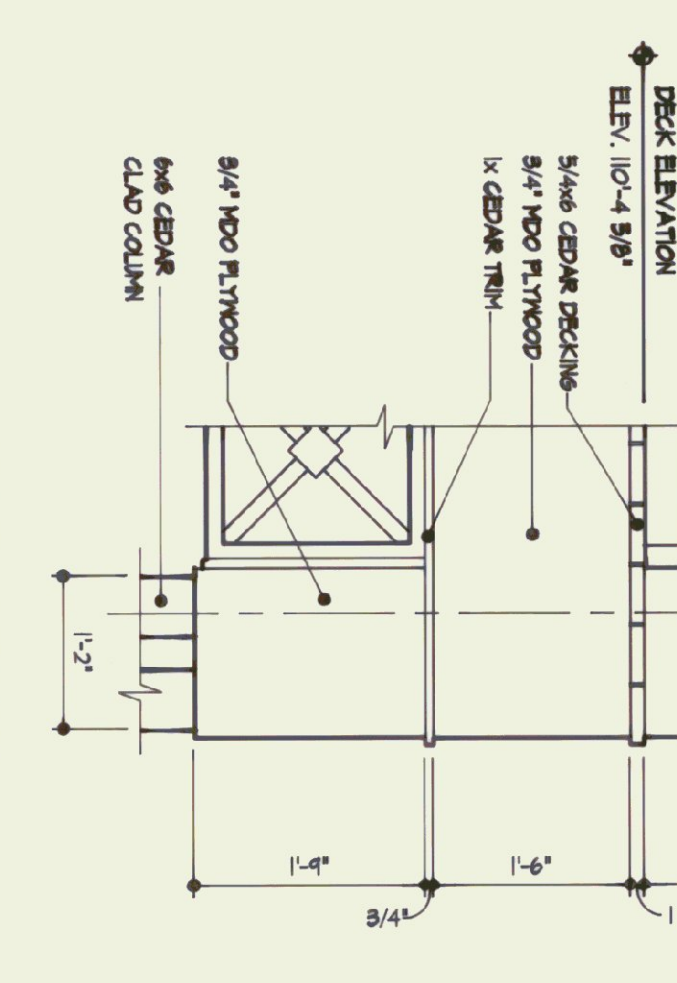
10 COLUMN BASE
8/4\"/>



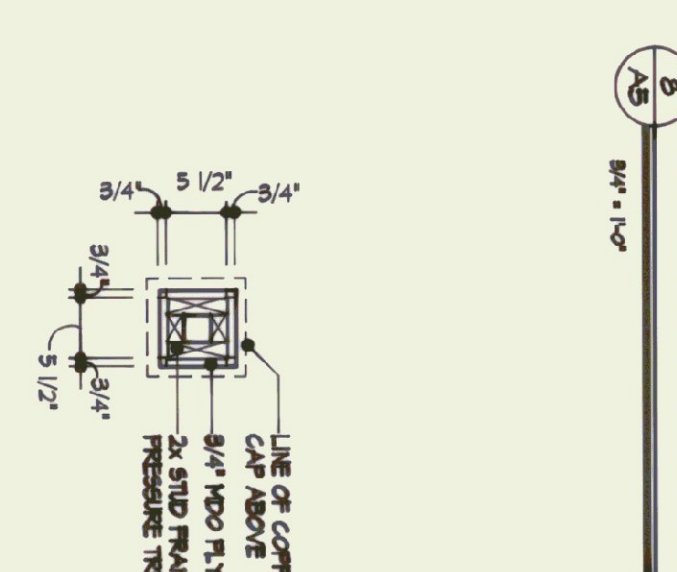
11 COLUMN BASE
8/4\"/>



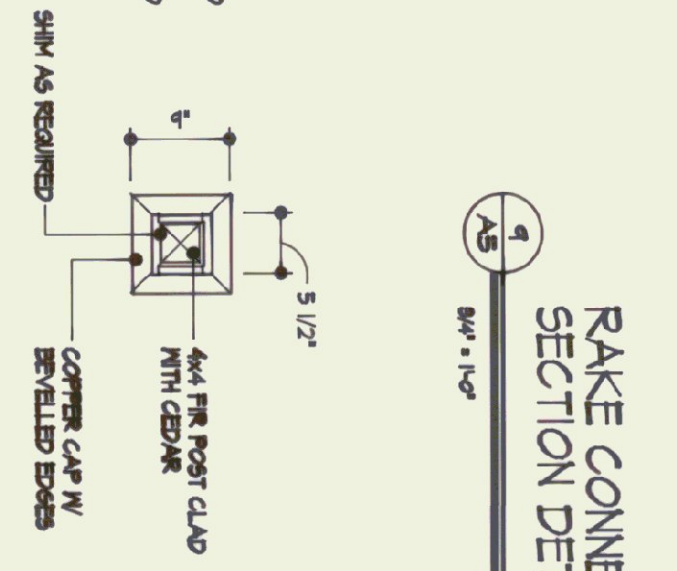
12 TRIM DETAIL
1/2\"/>



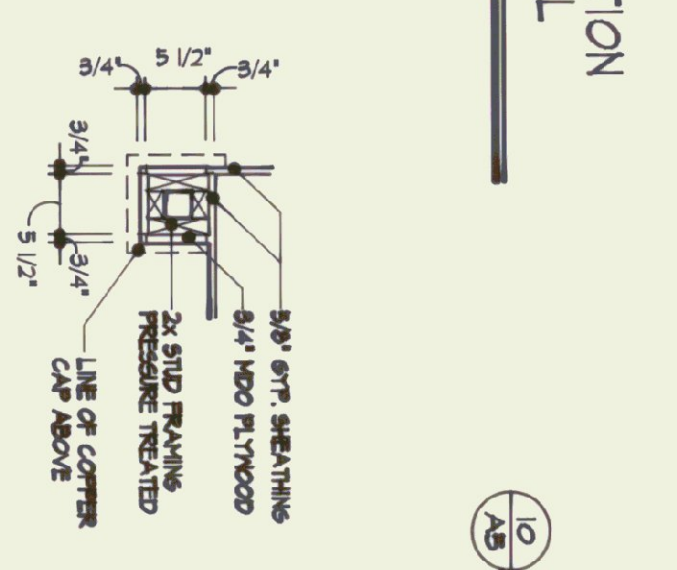
13 EAST CORNER COLUMN DETAIL
8/4\"/>



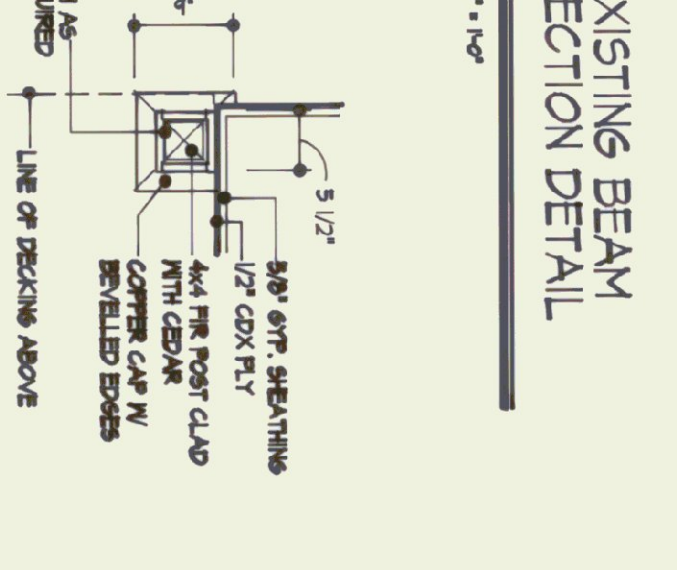
14 SECTION THRU COLUMN BASE
8/4\"/>



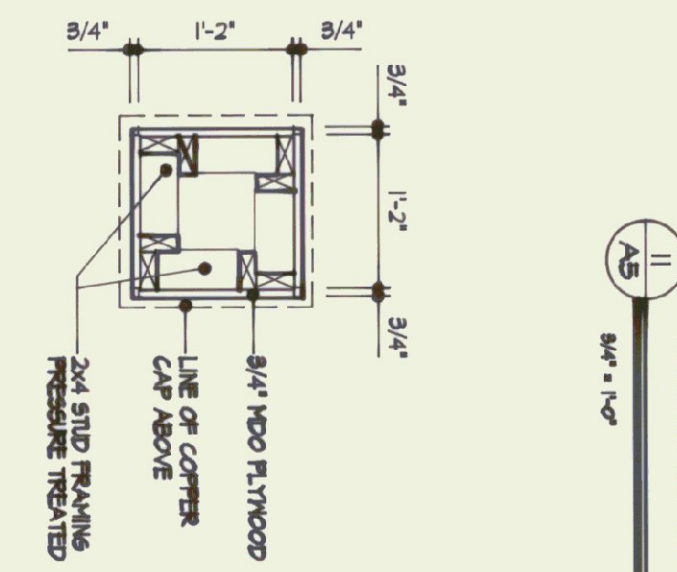
15 SECTION THRU COLUMN SECTION
8/4\"/>



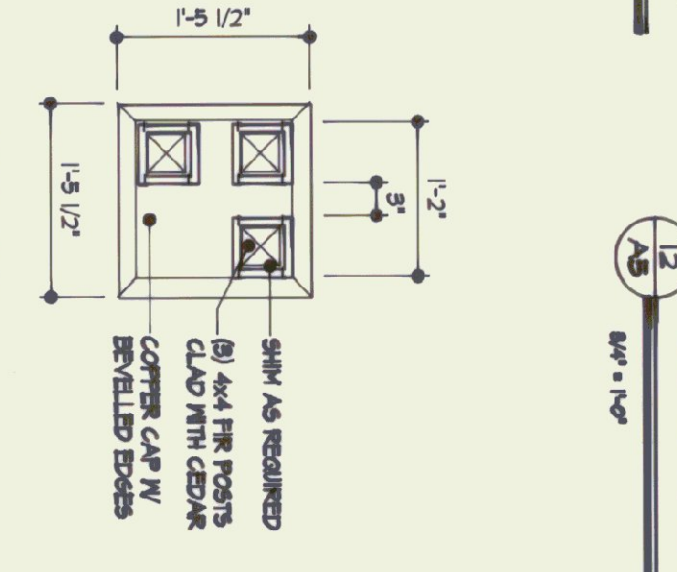
16 SECTION THRU COLUMN BASE
8/4\"/>



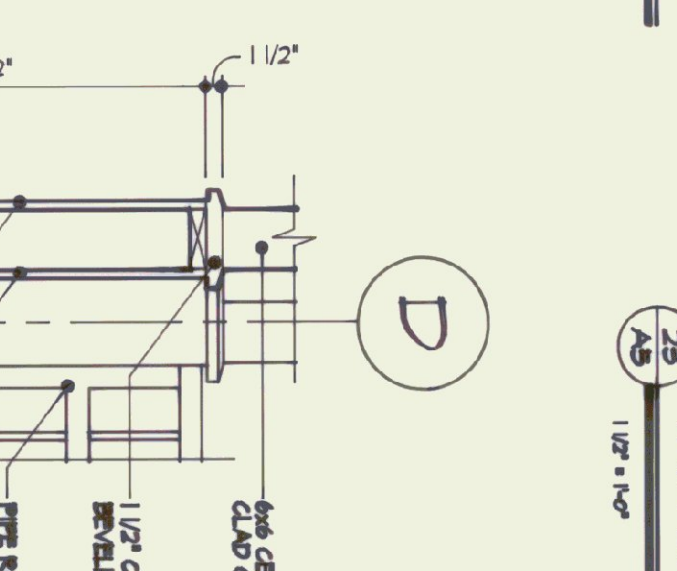
17 SECTION THRU COLUMN SECTION
8/4\"/>



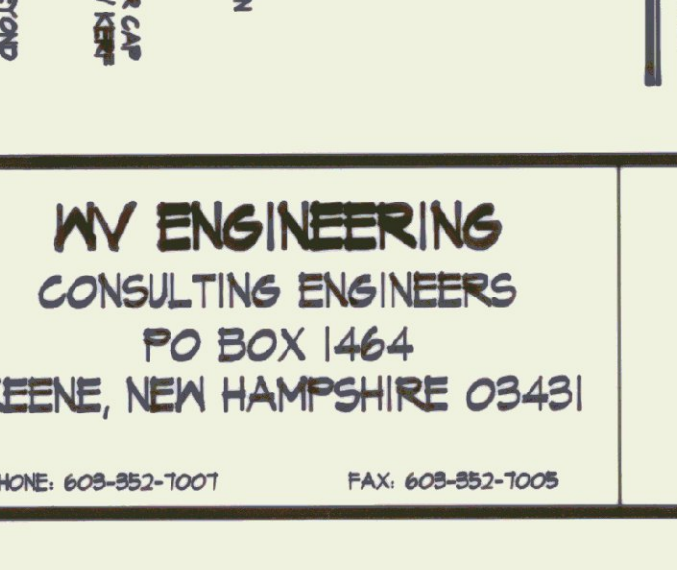
18 SECTION THRU COLUMN BASE
8/4\"/>



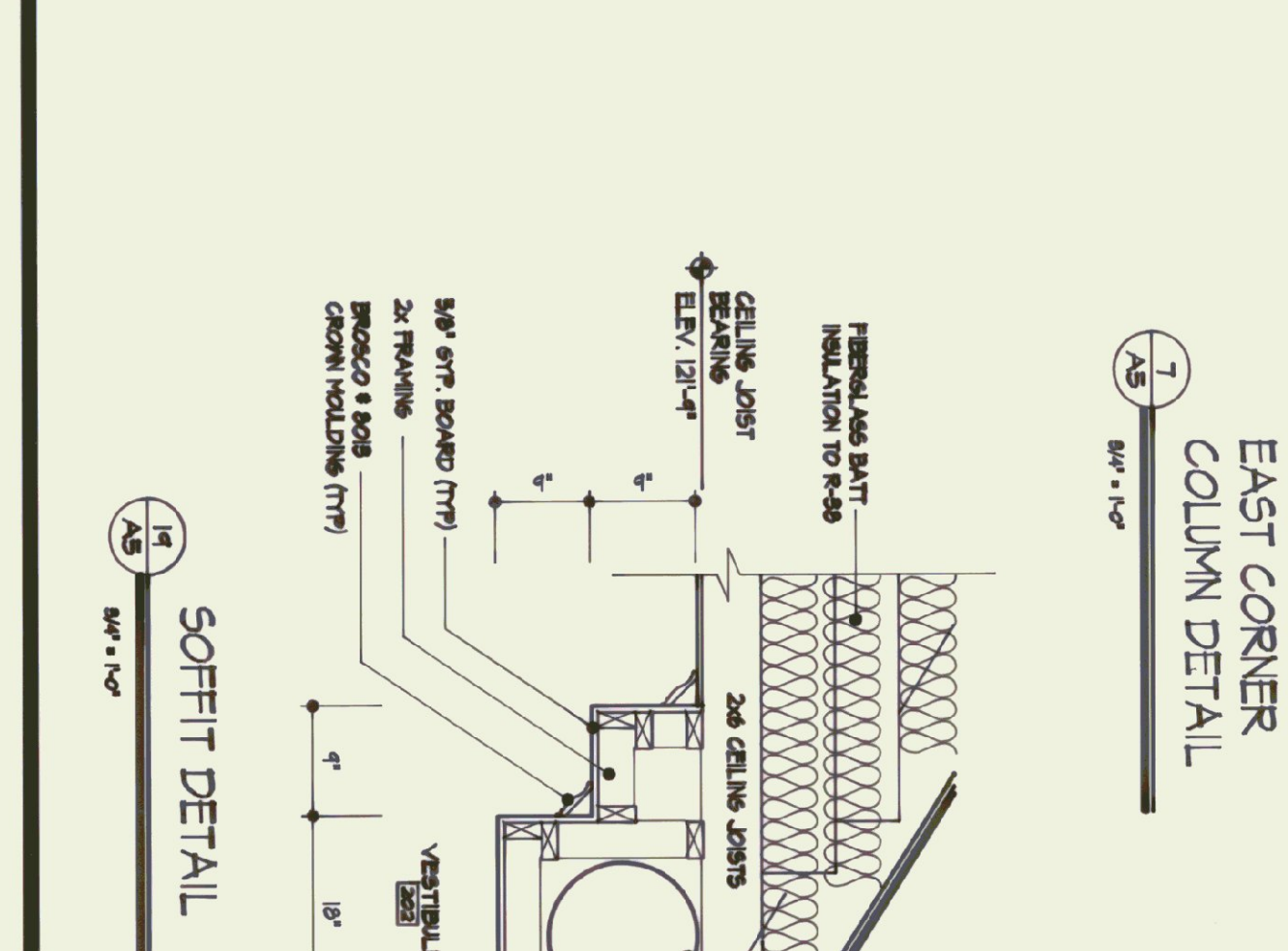
19 SECTION THRU COLUMN SECTION
8/4\"/>



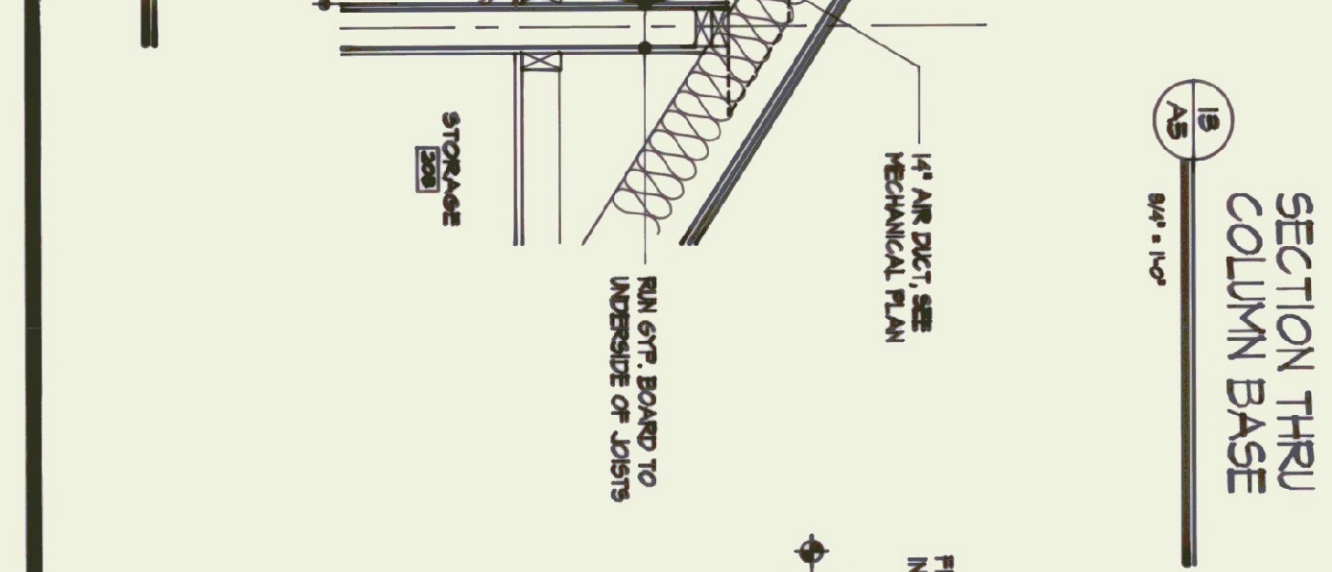
20 SECTION THRU COLUMN SECTION
8/4\"/>



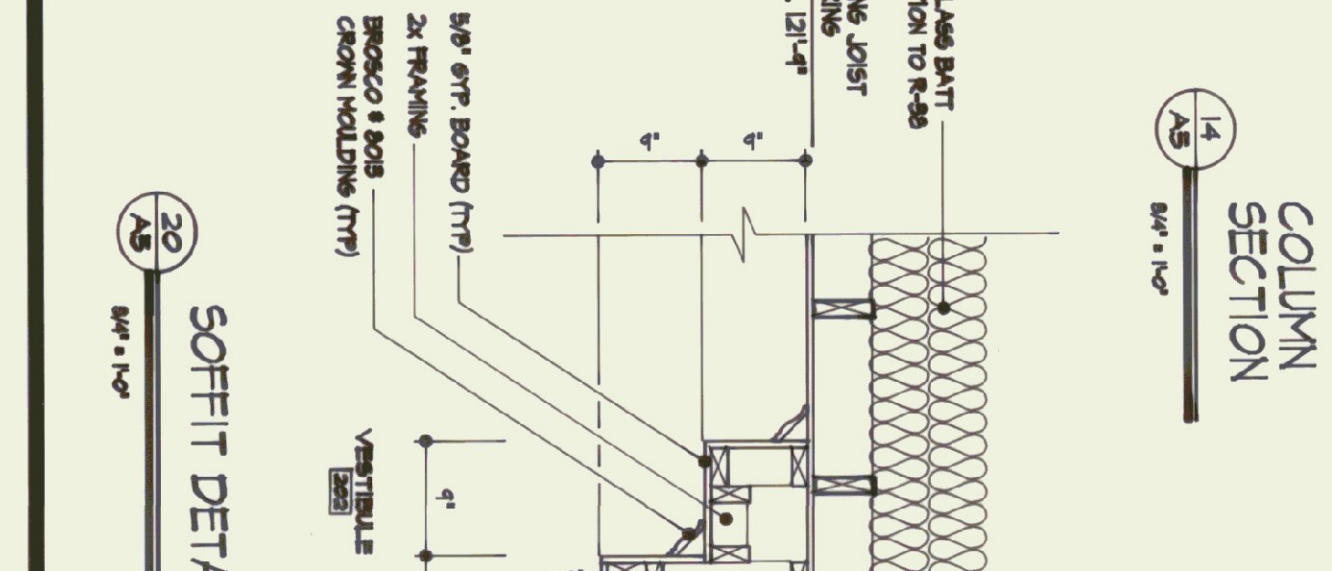
21 CORNER COLUMN SECTION DETAIL
8/4\"/>



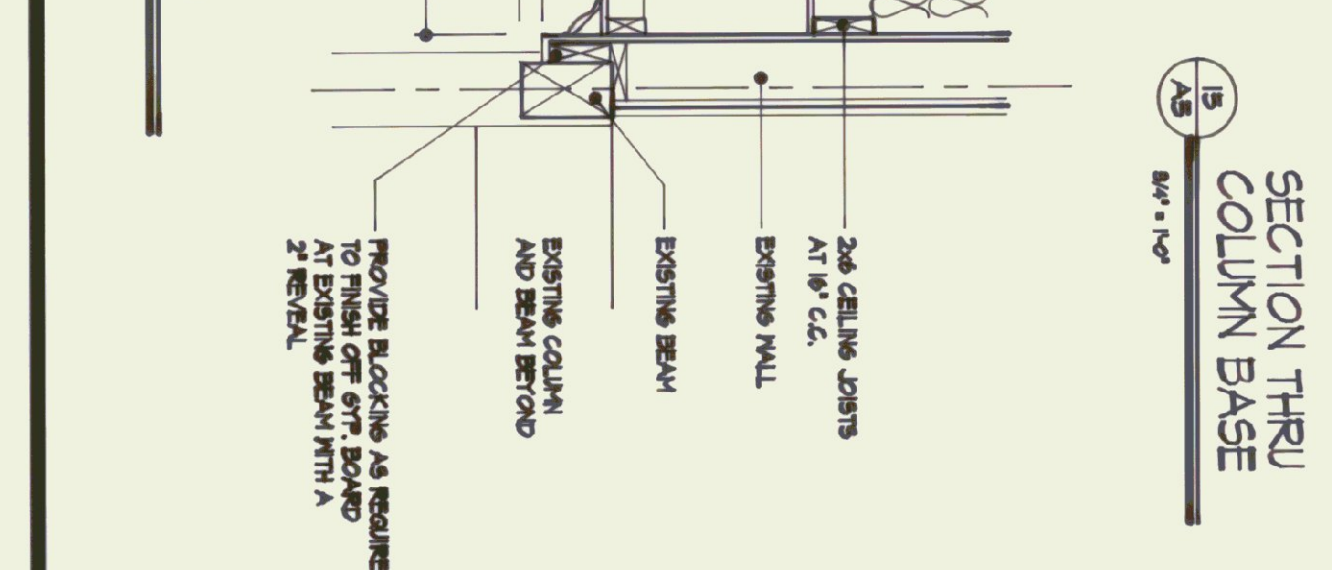
22 SOFFIT DETAIL
8/4\"/>



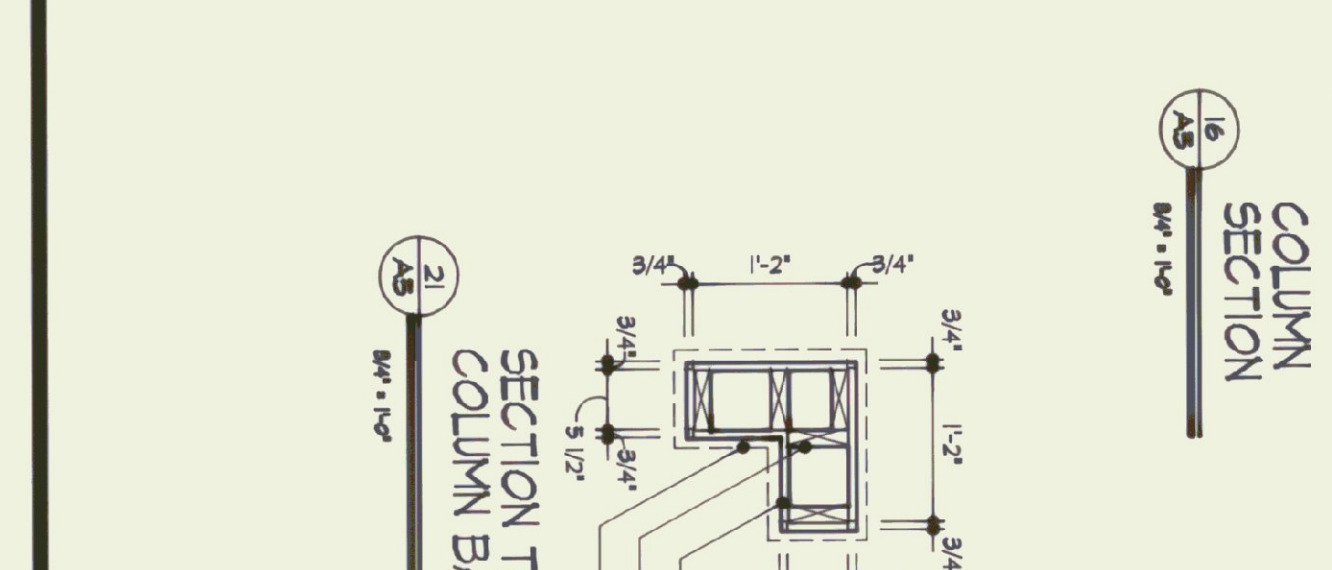
23 SOFFIT DETAIL
8/4\"/>



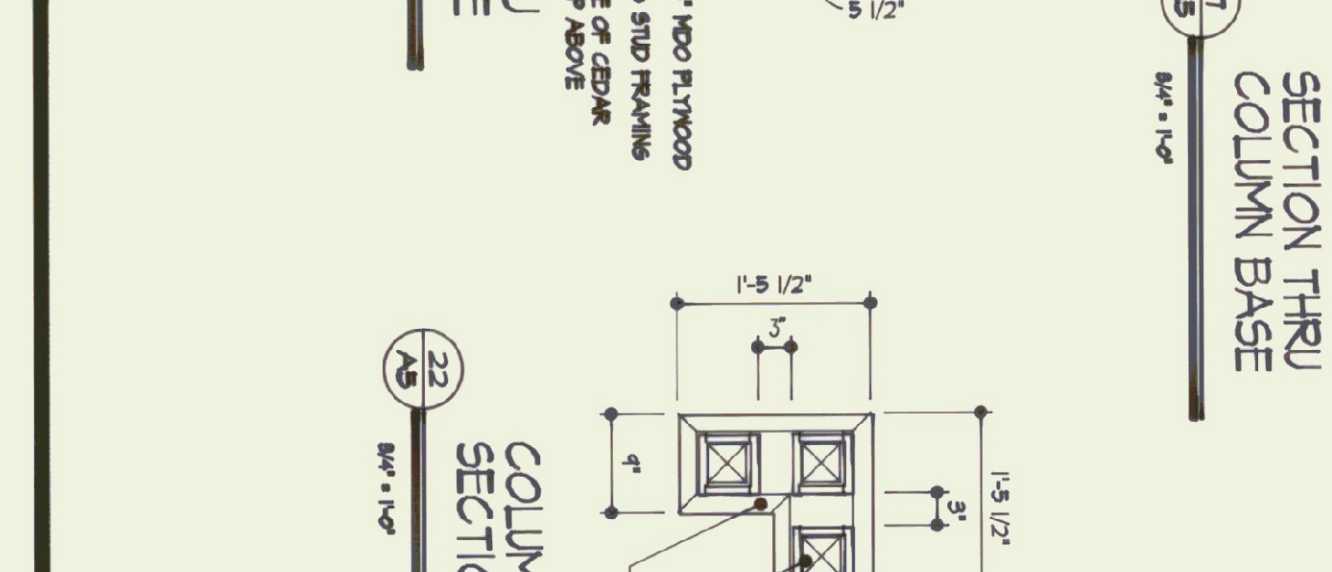
24 SOFFIT DETAIL
8/4\"/>



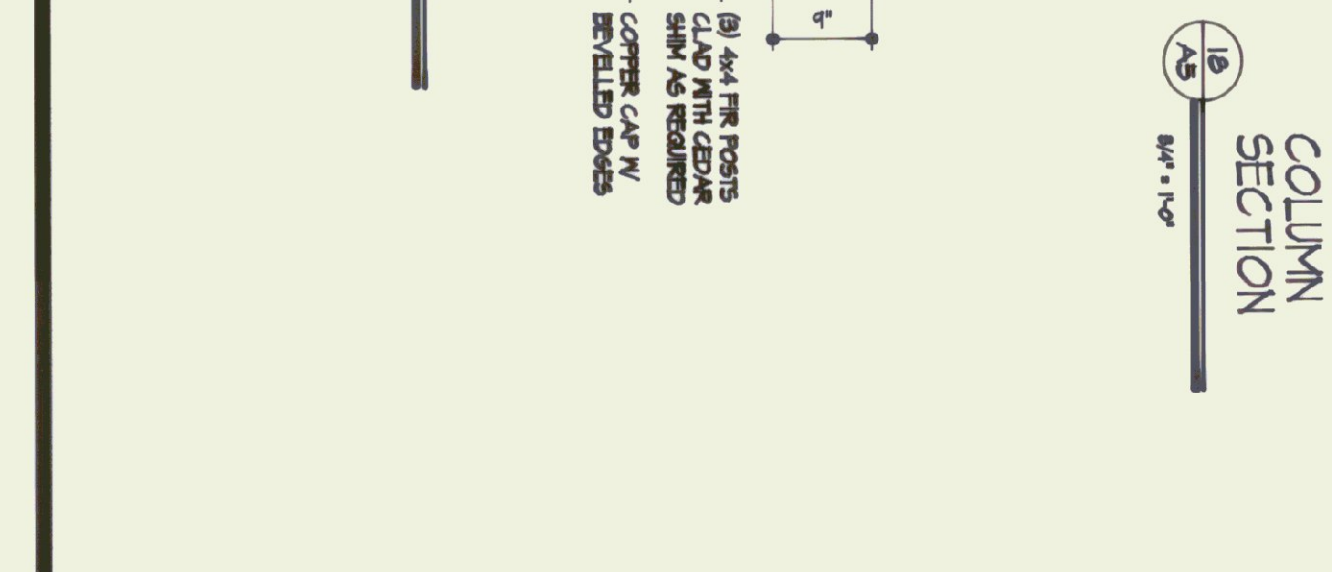
25 SOFFIT DETAIL
8/4\"/>



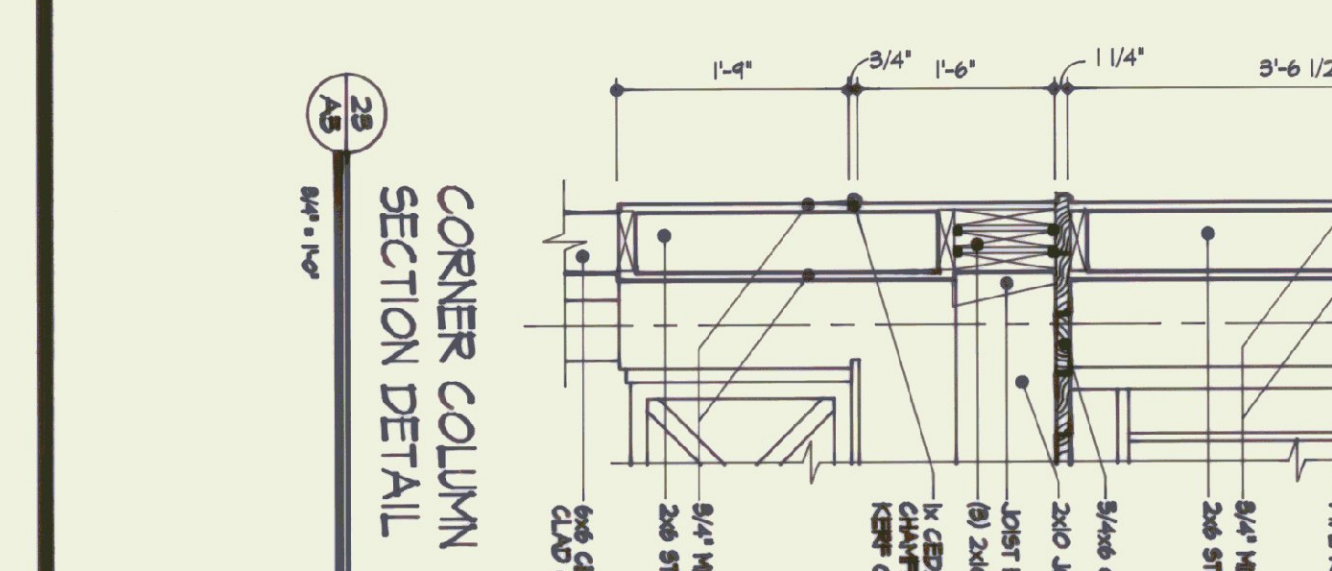
26 SOFFIT DETAIL
8/4\"/>



27 SOFFIT DETAIL
8/4\"/>

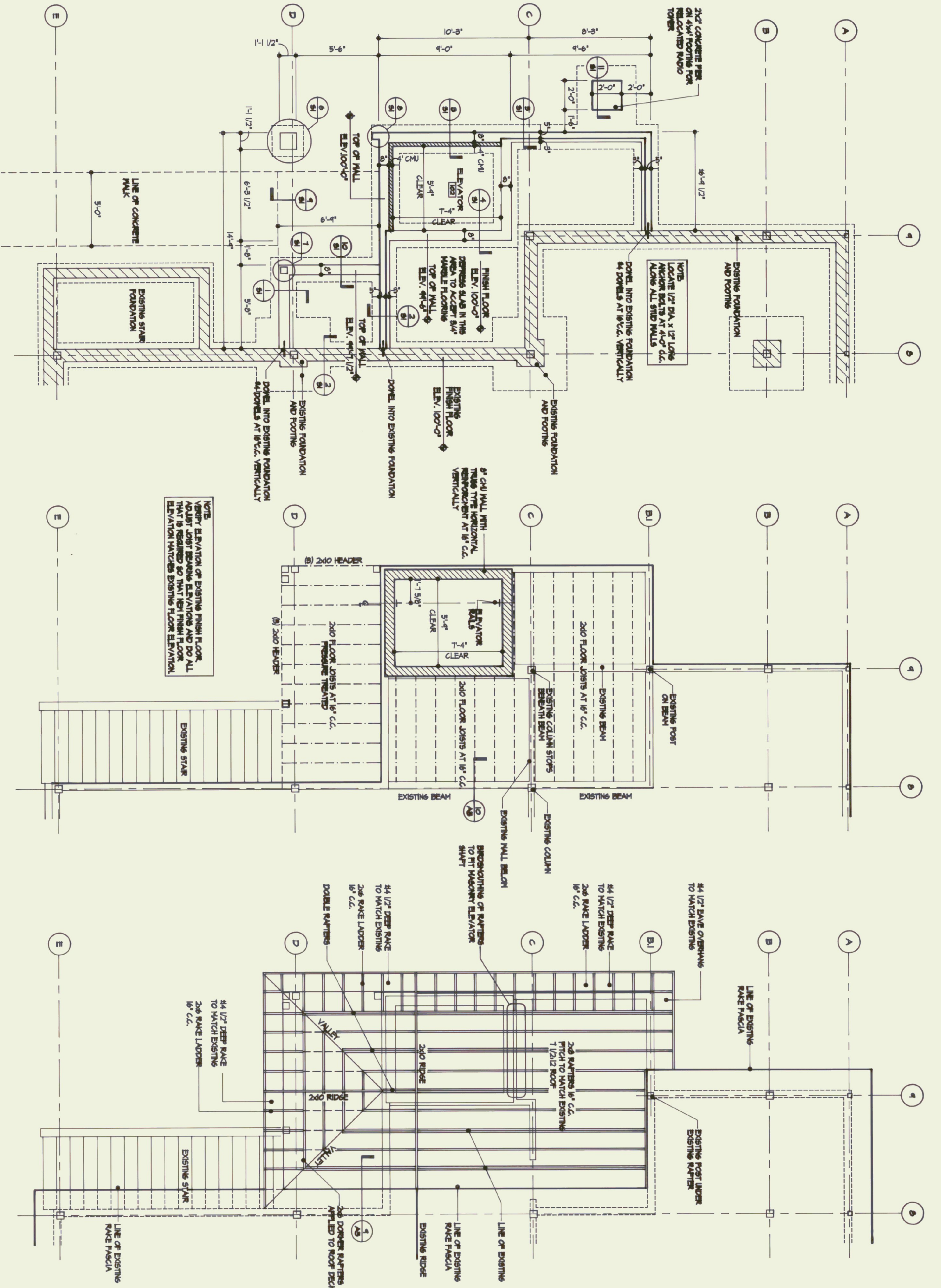


28 SOFFIT DETAIL
8/4\"/>



29 SOFFIT DETAIL
8/4\"/>

DESIGNED BY: CHS
DRAWN BY: SERGIO
CHECKED BY: T.E.
DETAILS
SHEET NUMBER
JOB NO. 8022101
DATE: SEPTEMBER 1985



FOUNDATION PLAN

SECOND FLOOR FRAMING

ROOF FRAMING

PIER DETAIL

CORNER DETAIL

CORNER DETAIL

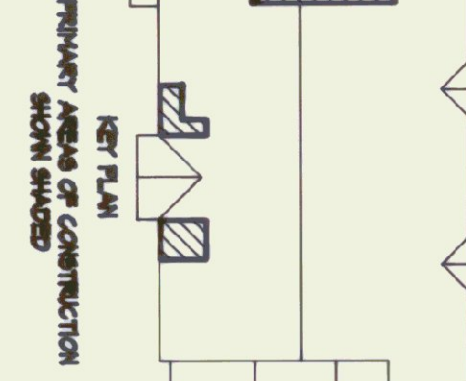
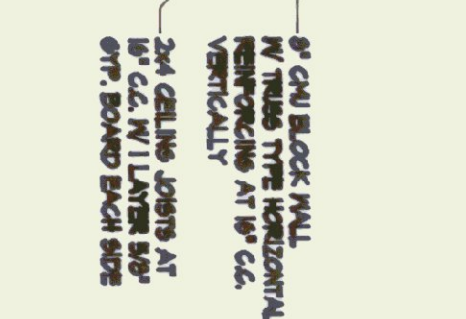
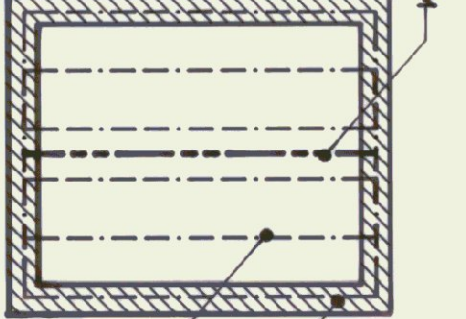
CONC. WALK EXPANSION AND SCORE JOINT DETAIL

WALK EXPANSION JOINT DETAIL

PIER DETAIL

SLAB DET.

ELEVATOR CEILING FRAMING

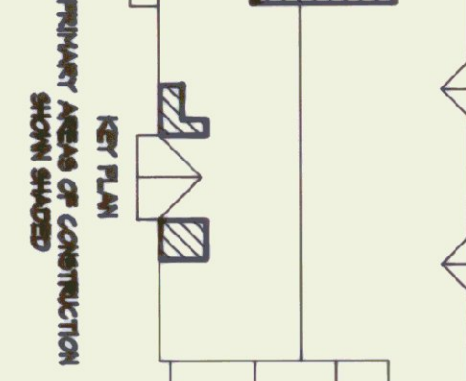
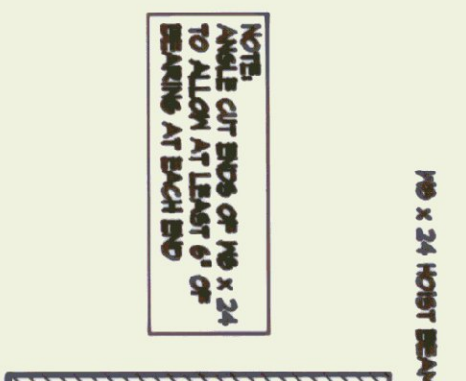
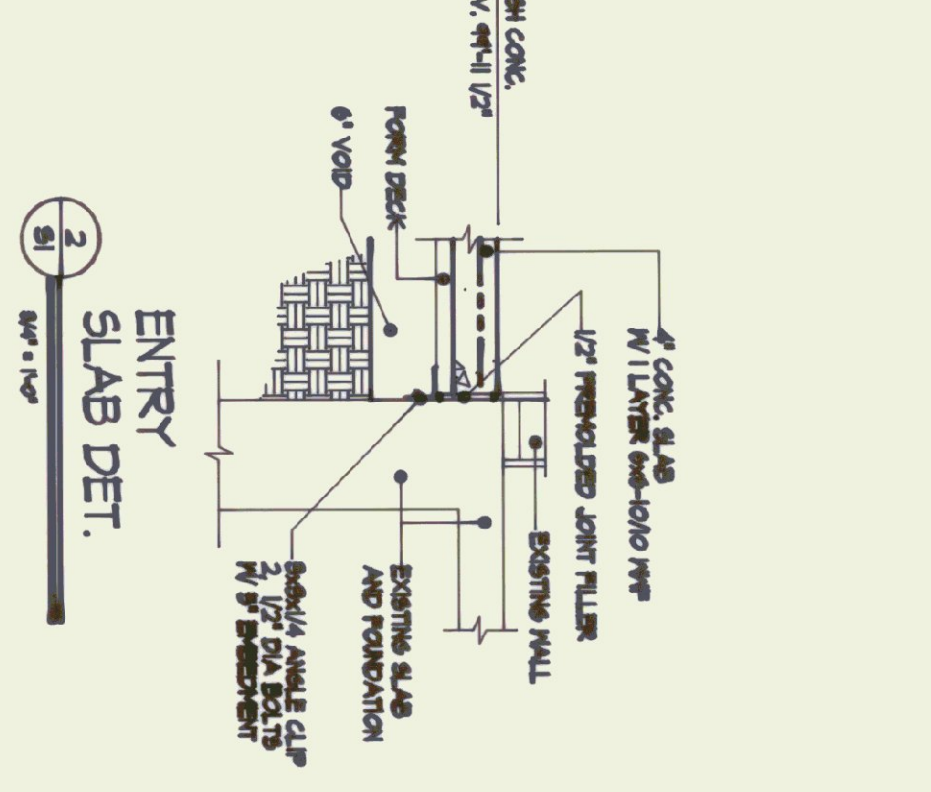
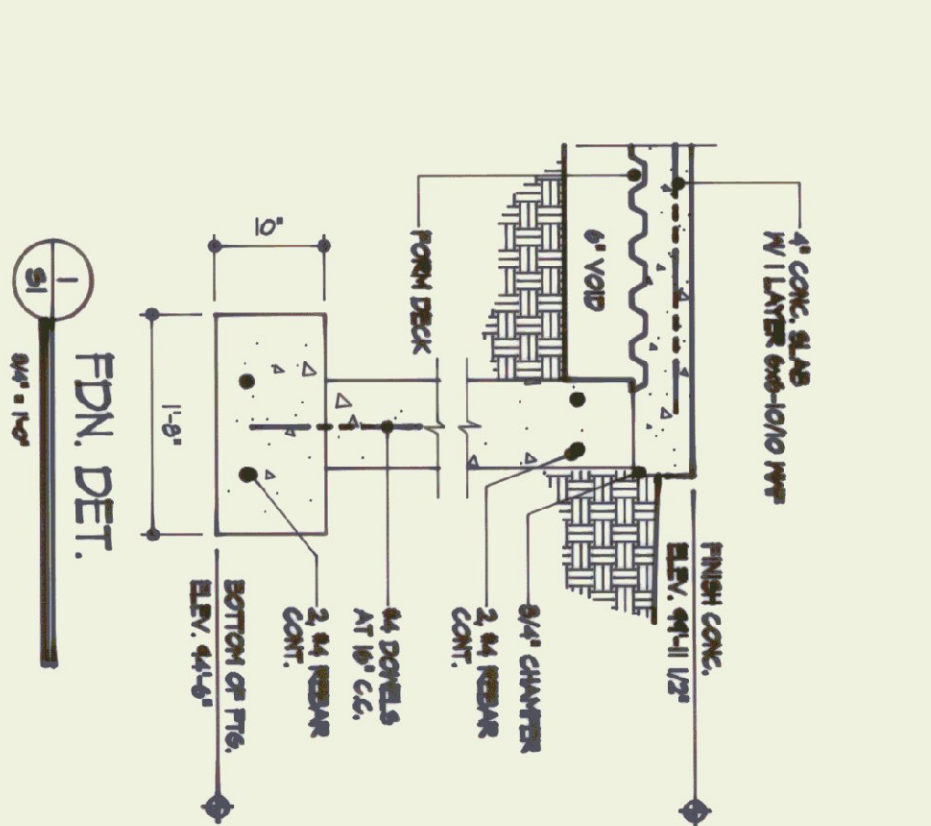
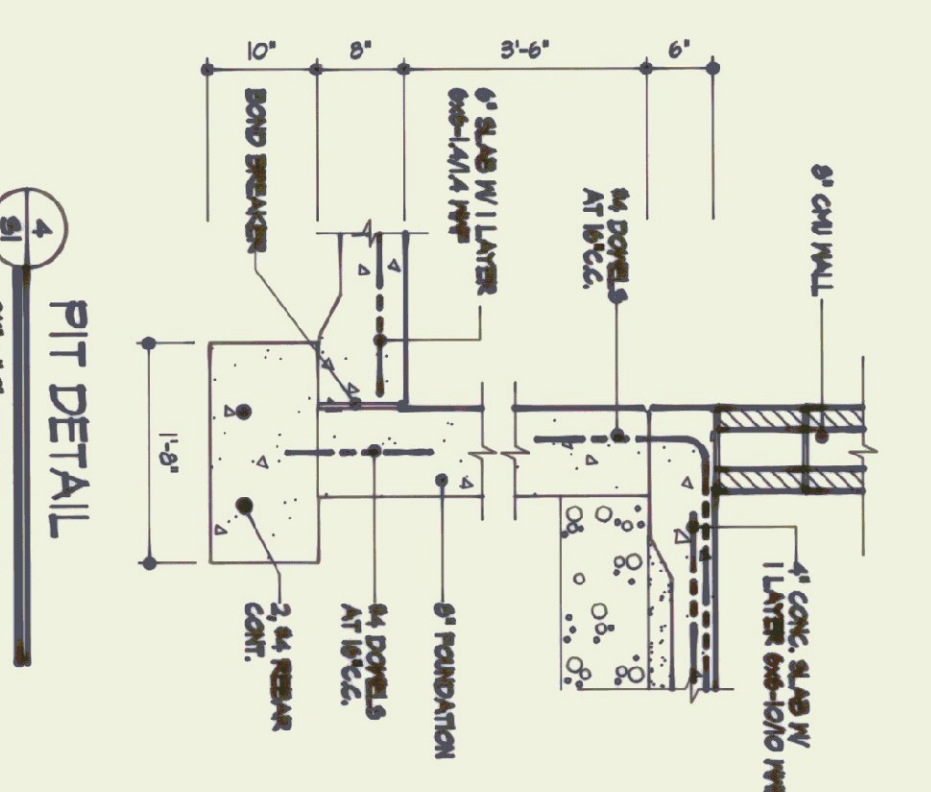
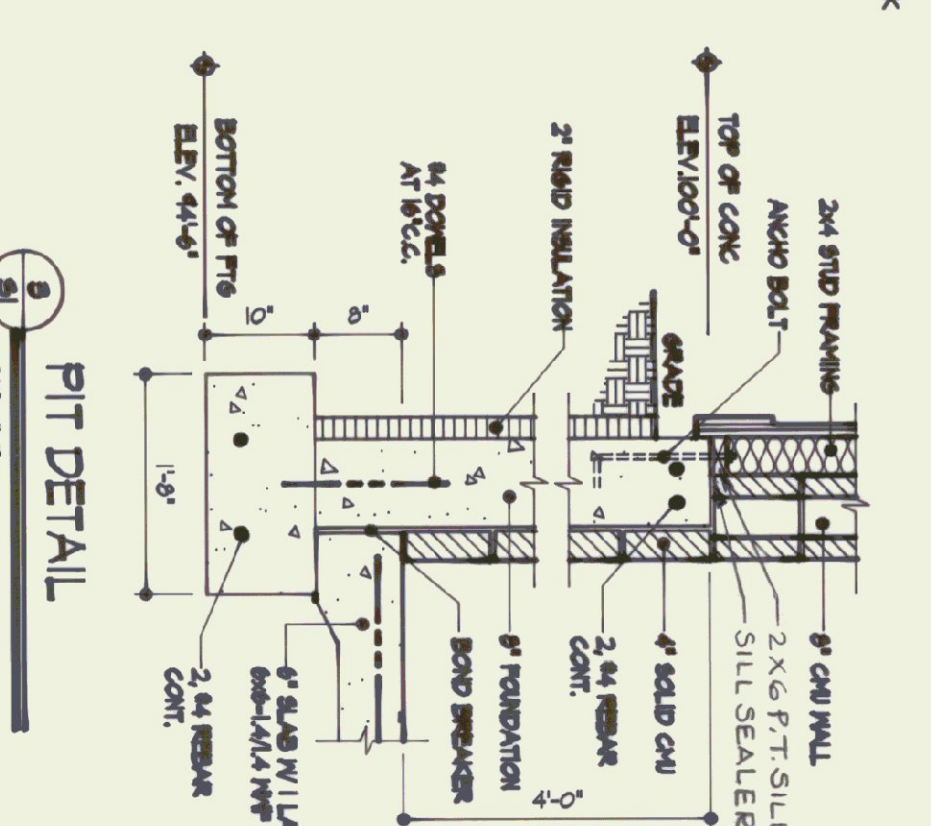
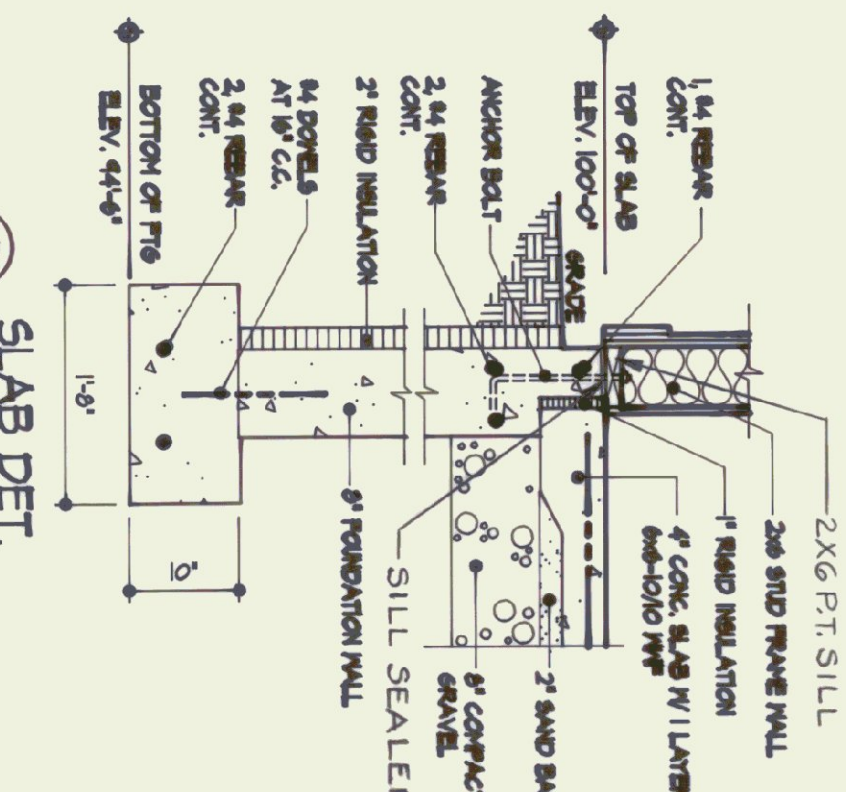
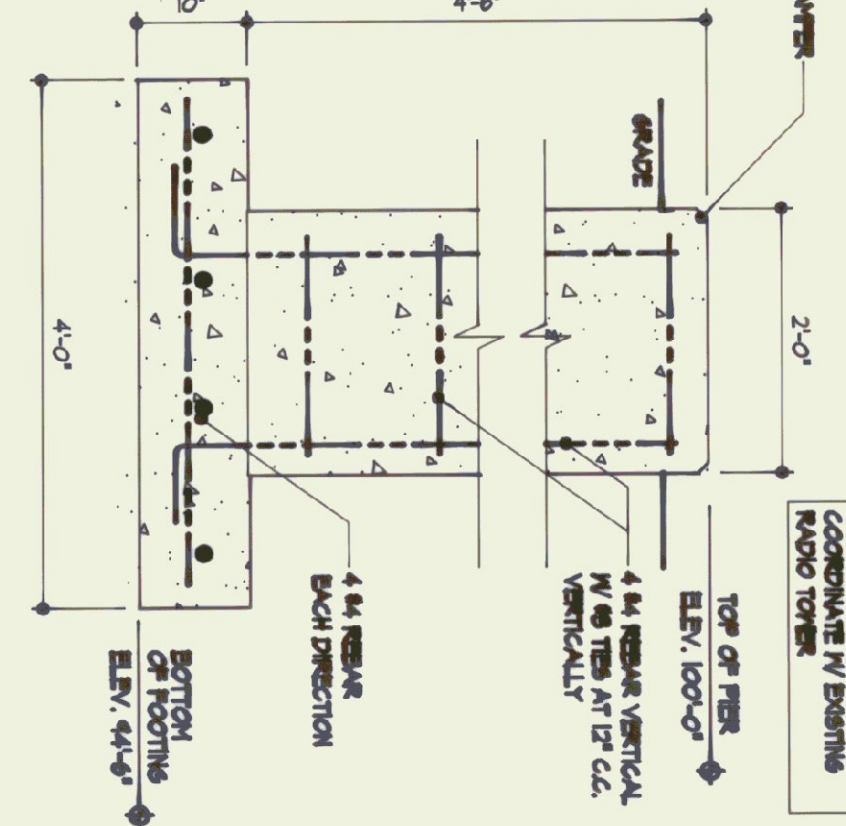


PIT DETAIL

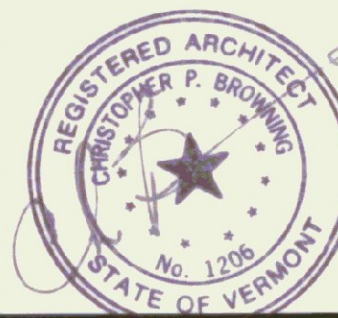
PIT DETAIL

FDN. DET.

ENTRY SLAB DET.



NO.	REVISIONS	DATE
1	RELEASSED FOR BIDS	4/25/94
2	RELEASED FOR REVIEW	5/18/94
3	SUBMITTED FOR REVIEW	1/28/94
4		



RUTLAND STATE AIRPORT
STATE OF VERMONT
DEPARTMENT OF STATE BUILDINGS
2 GOVERNER AIKEN AVENUE
MONTPELIER, VERMONT 05602

WY ENGINEERING
CONSULTING ENGINEERS
PO BOX 1464
KEENE, NEW HAMPSHIRE 03431

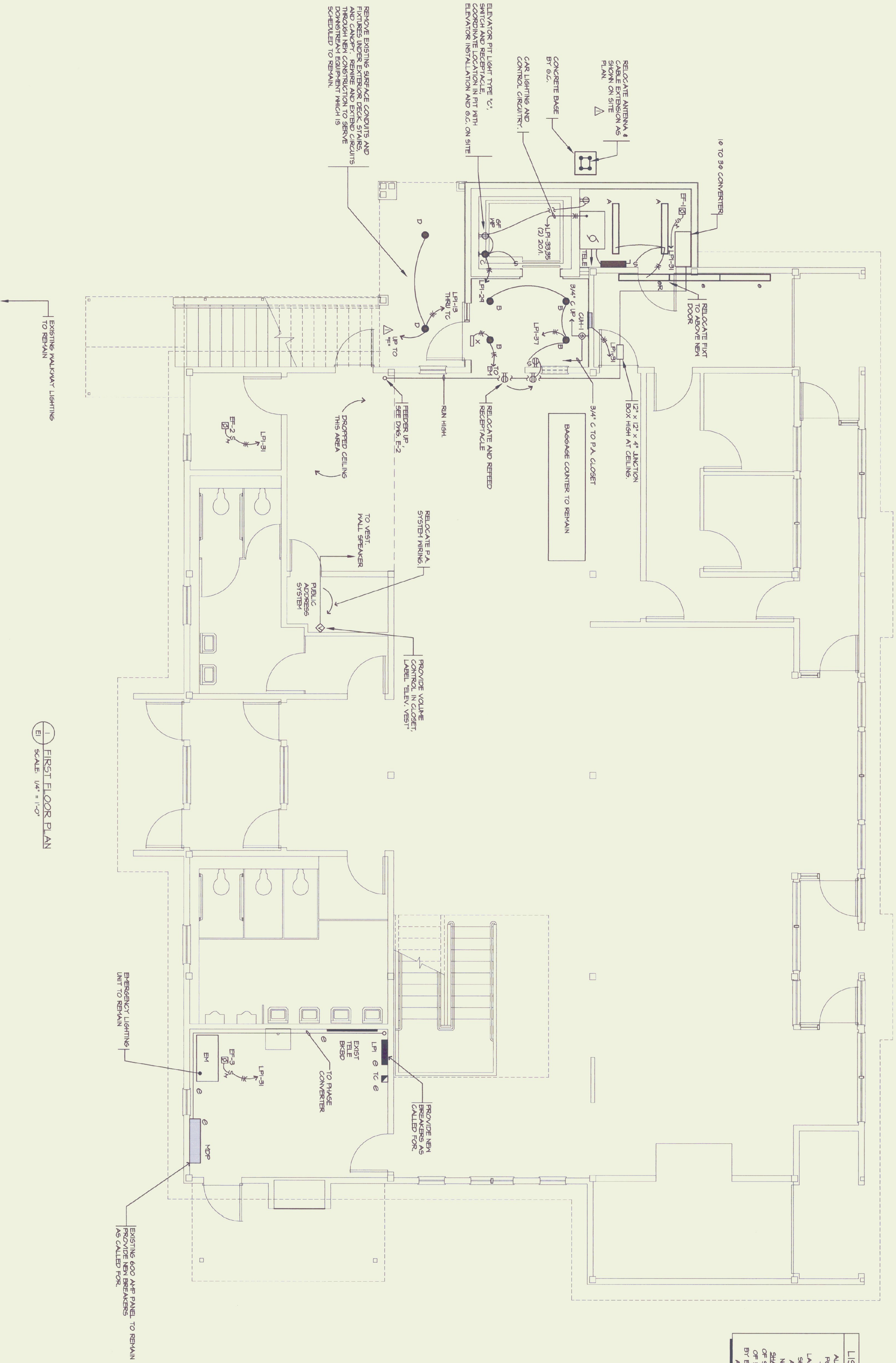
BROWNING ASSOCIATES
PLANNING AND ARCHITECTURE
54 1/2 CENTER STREET
RUTLAND, VERMONT 05701

DESIGNED BY: CMB
DRAWN BY: SER/CPB
CHECKED BY: TJC
STRUCTURAL
SHEET NUMBER: 51
JOB NO. 830210

PHONE: 802-778-8245 FAX: 802-778-8295

PHONE: 603-852-7007 FAX: 603-852-7005

PROJECT DATE: SEPTEMBER 1993



1 FIRST FLOOR PLAN
SCALE: 1/4" = 1'-0"

- EXISTING EQUIPMENT SYMBOLS**
- EXISTING EQUIPMENT TO REMAIN
 - EXISTING EQUIPMENT TO BE RELOCATED AS SHOWN
 - X EXISTING EQUIPMENT TO BE REMOVED AND DISPOSED OF.

LISTED EQUIPMENT NOTICE

ALL EQUIPMENT NEEDING ELECTRICAL POWER IS INTRODUCED AND SPECIFIED TO BE UL® OR CSA® LISTED AND LABELED. ELECTRICAL CONTRACTOR SHALL IMMEDIATELY NOTIFY OWNER AND ENGINEER OF ANY EQUIPMENT NOT SO LISTED AND LABELED AND SHALL NOT PROCEED WITH ANY WIRING OF SUCH EQUIPMENT UNTIL REPLEASANT OF EQUIPMENT OR DIRECTED IN WRITING BY ENGINEER. TYPICAL OF ALL DEVICES AND EQUIPMENT ON THIS PROJECT.

- ELECTRICAL ABBREVIATIONS**
- AFP ABOVE FINISHED FLOOR
 - ALG ALUMINUM
 - BC BARE COPPER
 - DBED BACKWARD
 - CMV CABLE TELEVISION
 - CU COPPER
 - CVP5 CENTRAL VERMONT PUBLIC SERVICE
 - ERT ELECTRICAL METALLIC TUBING
 - FSIB FIBRILE
 - GC GENERAL CONTRACTOR
 - GFCL GROUND FAULT (TRIPPER)
 - GMV GENERAL MECHANICAL CONTRACTOR
 - MCB MAIN CIRCUIT BREAKER
 - NEC NATIONAL ELECTRICAL CODE
 - NIC NOT IN CONTRACT
 - NF NON FINISHED
 - PC PLUMBING CONTRACTOR
 - PLT POLY(VINYL CHLORIDE)
 - TELE TELEPHONE
 - RMG RIGID GALVANIZED METAL CONDUIT
 - W6 WITH GROUND CONDUCTOR
 - WP WEATHERPROOF

NO.	REVISIONS	DATE
1	RELEASED FOR BID	4/25/14

DESIGNED BY: **NAH**
DRAWN BY: **CMN**
CHECKED BY: **NAH**



1ST FLOOR LIGHTING

STATE OF VERMONT
DEPARTMENT
OF STATE BUILDINGS

BROWNING ASSOCIATES
PLANNING AND ARCHITECTURE
54 1/2 CENTER STREET
RUTLAND, VERMONT 05701

wv engineering associates
inc. pa
mechanical electrical consulting engineers
po box 1464 keene, new hampshire 03431
603 352 7007 fax 352 7005
MV No. 93350

SCALE: AS NOTED
DATE: MARCH 21, 1994

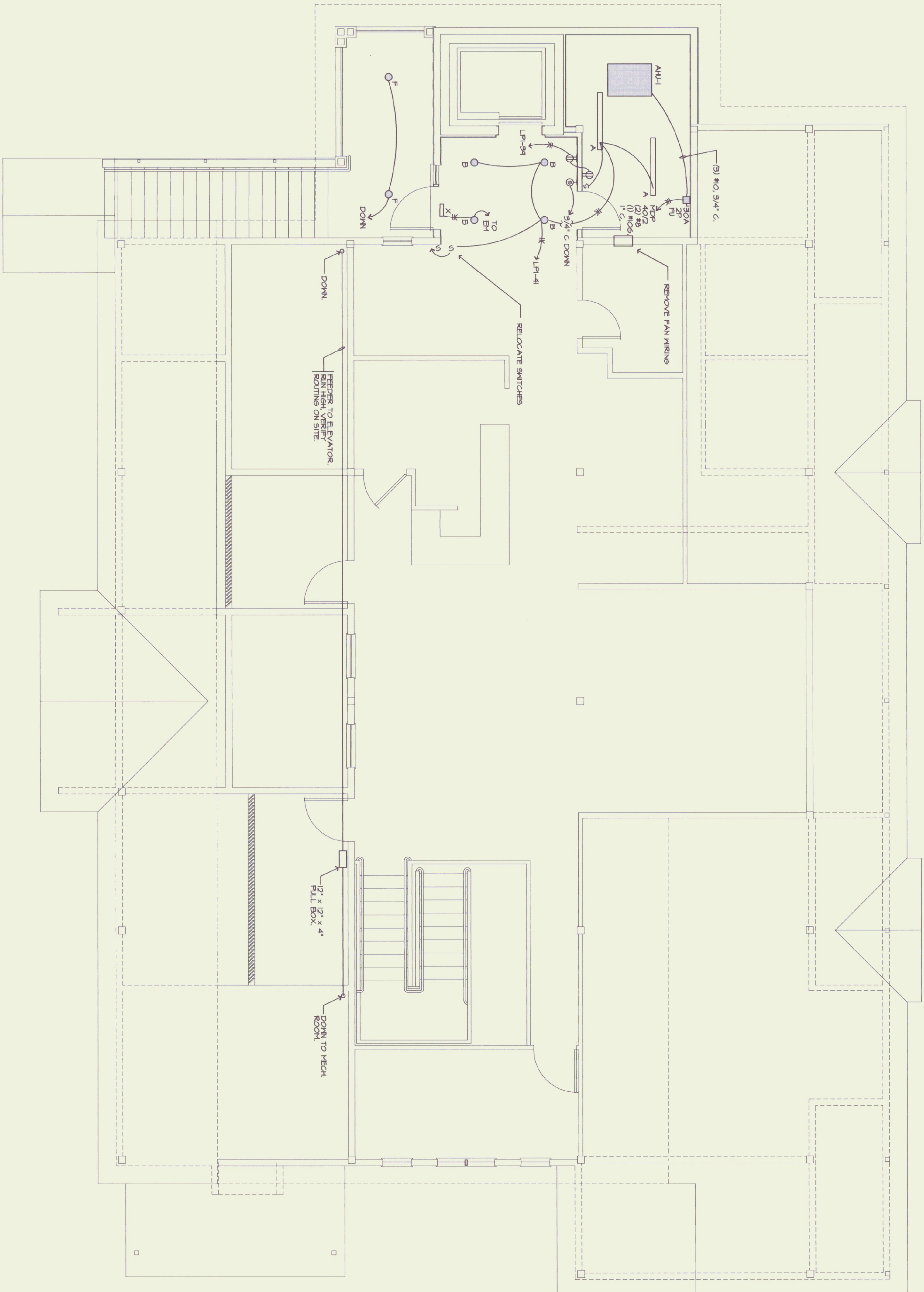
E1

SEAL
REGISTERED PROFESSIONAL ENGINEER
STATE OF VERMONT
1994

ELECTRICAL SYMBOL LIST

NOT ALL USED

- FLUORESCENT STRIP FIXTURE
- RECESSED, FLUORESCENT FIXTURE
- FLUORESCENT WALL FIXTURE
- WALL MOUNTED FIXTURE
- CEILING FIXTURE
- EMERGENCY BATTERY UNIT, NO ATTACHED HEADS
- EMERGENCY BATTERY UNIT, ATTACHED HEADS
- EXIT SIGN, SELF POWERED
- SINGLE POLE SWITCH 20 AMP 125 VOLT TOGGLE, FLUSH MOUNT
- 3-WAY SWITCH 20 AMP 125 VOLT TOGGLE, FLUSH MOUNT
- 4-WAY SWITCH 20 AMP 125 VOLT TOGGLE, FLUSH MOUNT
- PILOT LIGHT SWITCH 20 AMP 125 VOLT TOGGLE, FLUSH MOUNT
SEE NOTES AT DEVICE FOR SPECIFIC MOUNTING INSTRUCTIONS
- DINNER SWITCH 20 AMP 125 VOLT SLIDE TYPE
INSTALL IN SEPARATE SINGLE GANG BOX AND PROVIDE SEPARATE NEUTRAL FROM EACH DIMMER TO BE CONTROLLED
- TRIP SWITCH 20 AMP 125 VOLT ROTARY KNOB TYPE
15 MIN TRIP WITH HOLD FEATURE, INSTALL IN SEPARATE SINGLE GANG BOX WHERE SHOWN ON PLANS. (MIN 3 1/2" WALL BOX)
- DIPLEX RECEPTACLE 20 AMP 125 VOLT FLUSH MOUNT
- DIPLEX RECEPTACLE ABOVE COUNTER AND BACKSPLASH VERIFY TRIP MOUNTING HEIGHT ON SITE PRIOR TO INSTALL IN:
- DIPLEX RECEPTACLE, SPLIT WIRE, TOP HALF SWITCH CONTROLLED
- DOUBLE DIPLEX RECEPTACLE, INSTALL IN 2-GANG BOX UNDER ONE 2-GANG FLUTE WIRE TO COMMON CIRCUIT AS SHOWN
- DIPLEX RECEPTACLE WITH WEATHERPROOF GASKETED COVER
- GROUND FAULT TYPE DIPLEX RECEPTACLE 20 AMP 125 VOLT CLASS A WITH 20 AMP FEED THROUGH RATING, PLATE TO MATCH OTHER DEVICES (MIN 3 1/2" WALL BOX)
- GROUND FAULT TYPE DIPLEX RECEPTACLE, WITH WEATHERPROOF COVER, INSTALL IN SEPARATE SINGLE GANG BOX WHERE SHOWN ON PLANS (MIN 3 1/2" WALL BOX)
- TELEPHONE SYSTEM NETWORK INTERFACE (TERMINATION) POINT, FURNISHED AND INSTALLED BY LOCAL TELEPHONE SERVICE CO., QUANTITY AS REQUESTED BY OWNER TO SERVE NEEDS
- TELEPHONE COUNTEY BOY AND COUNTRY PROP BY EQUIPMENT PLATE, WIRING AND EQUIPMENT COMPLETE BY PHONE VENDOR, UNDER SEPARATE CONTRACT WITH OWNER. SEE TELEPHONE RISER DIAGRAM
- TELEPHONE OUTLET, WALL OR PAV TYPE AS NOTED
- WIRING HOSE RUN TO PANEL, AS NOTED. (2) #12 (1) #12 GND MIN. BACK TO 20 AMP SINGLE POLE BREAKER UNLESS NOTED OTHERWISE.
- INDICATES (2) POWER CONDUCTORS WITH FULL SIZE GROUND.
- INDICATES (3) POWER CONDUCTORS WITH FULL SIZE GROUND.
- INDICATES (4) POWER CONDUCTORS WITH FULL SIZE GROUND.
- CABLE OR RACEWAY RUN CONCEALED IN WALLS OR CEILINGS
- CABLE OR RACEWAY RUN CONCEALED IN WALLS OR CEILINGS UNFINISHED AREAS.
- EMERGENCY LIGHTING LOW VOLTAGE (12 VDC) WIRING, RUN CONCEALED IN WALLS OR ABOVE CEILINGS, SURFACE MOUNTED OUTLET IN UTILTY AREAS OR WHERE SPECIFICALLY ALLOWED.
- ELECTRICAL PANELBOARD, 120/208 VOLT 3 Ø 4 WIRE REFER TO POWER RISER DIAGRAM AND PANEL SCHEDULES FOR DETAILS
- TELEPHONE AND CATV BACKBOARD BY EC, SEE SYSTEMS RISER DIAGRAMS FOR ADDITIONAL DETAILS AND SPECIFICATIONS
- DISCONNECT SWITCH BY EC, 250 OR 600 VOLT, NEHA 110% BR AS NOTED, FIGURE SIZE AS NOTED OR REQUIRED PANEL ELEMENT, THE DELAY FEES SIZED FURNISHED AND INSTALLED BY EC PER EQUIPMENT MANUFACTURE VALUES.



1 SECOND FLOOR PLAN
SCALE: 1/4" = 1'-0"



NORTH ARROW

NO.	REVISIONS	DATE
1	RELEASED FOR BID	4/25/14

2ND FLOOR LIGHTING

STATE OF VERMONT
DEPARTMENT
OF STATE BUILDINGS

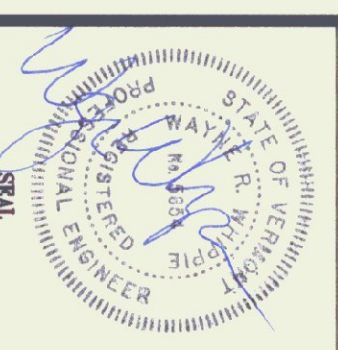
nv engineering associates inc. pa

mechanical electrical consulting engineers
po box 1464 keene, new hampshire 03431
603 352 7007 fax 352 7005

INV No. 93356

BROWNING ASSOCIATES
PLANNING AND ARCHITECTURE
54 1/2 CENTER STREET
RUTLAND, VERMONT 05701

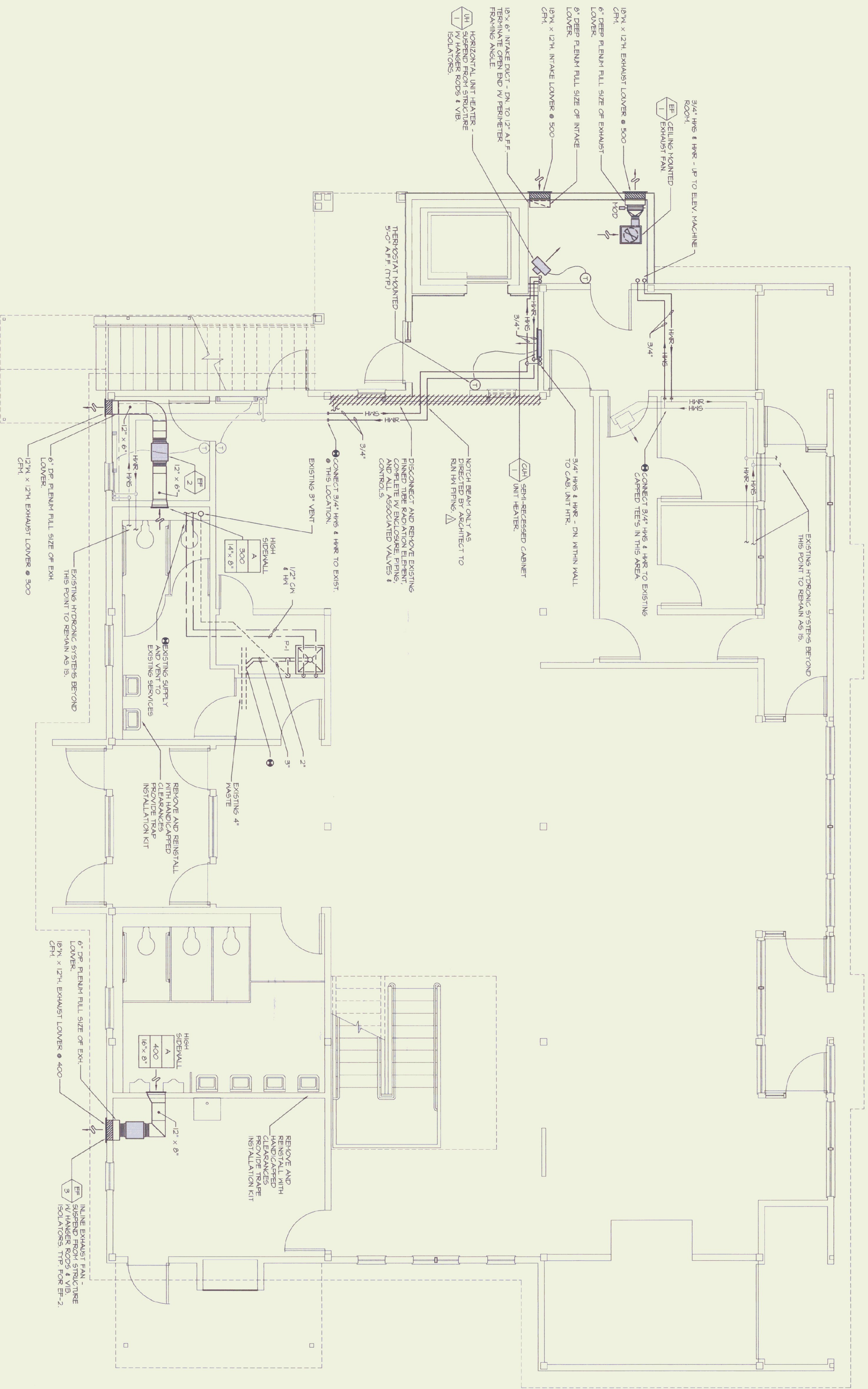
802-773-8245 FAX: 802-773-8235



SCALE: AS NOTED
DATE: MARCH 21, 1994

F2

SHEET NUMBER



FIRST FLOOR HVAC PLAN
SCALE: 1/4" = 1'-0"



NORTH ARROW
DESIGNED BY: ADY
DRAWN BY: MAM
CHECKED BY: ADY

NO.	REVISIONS	DATE
1	RELEASED FOR BID	4/25/44

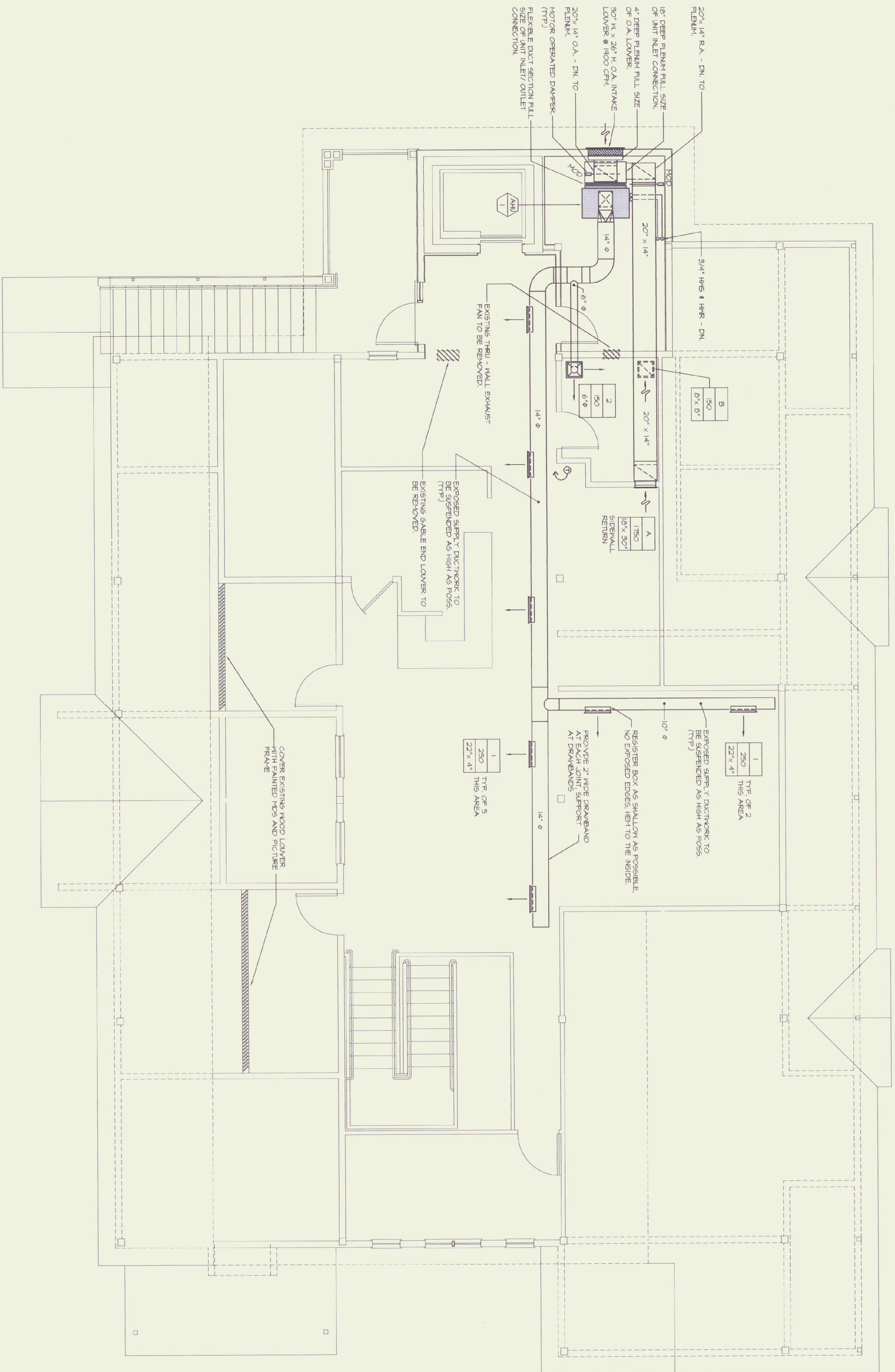
1ST FLOOR HVAC
STATE OF VERMONT
DEPARTMENT
OF STATE BUILDINGS

wv engineering associates
inc. pa
mechanical electrical consulting engineers
po box 1464 keene, new hampshire 03431
603 352 1007 fax 352 1005
HV No. 93350

BROWNING ASSOCIATES
PLANNING AND ARCHITECTURE
54 1/2 CENTER STREET
RUTLAND, VERMONT 05701
802-773-8245 FAX: 802-773-8235



SCALE: AS NOTED
DATE: MARCH 21, 1994
M1
SHEET NUMBER



SECOND FLOOR HVAC PLAN
SCALE: 1/4" = 1'-0"

NO.	REVISIONS	DATE
1	RELEASED FOR BID	4/25/94

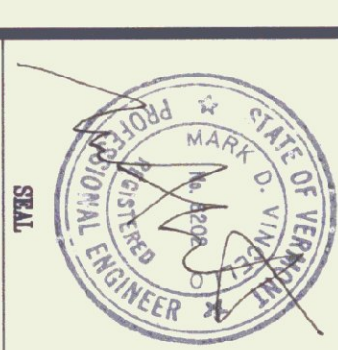


NORTH ABOVE
 DESIGNED BY: JNY
 DRAWN BY: NAM
 CHECKED BY: JNY

2ND FLOOR HVAC
 STATE OF VERMONT
 DEPARTMENT
 OF STATE BUILDINGS

wv engineering associates
 inc. pa
 mechanical electrical consulting engineers
 po box 1464 keene, new hampshire 03431
 603 352 7007 fax 352 7005
 WV No. 93358

BROWNING ASSOCIATES
 PLANNING AND ARCHITECTURE
 54 1/2 CENTER STREET
 RUTLAND, VERMONT 05701
 802-773-8245 FAX: 802-773-8235



SCALE: AS NOTED
 DATE: MARCH 21, 1994
 SHEET NUMBER
M2
 SEAL

