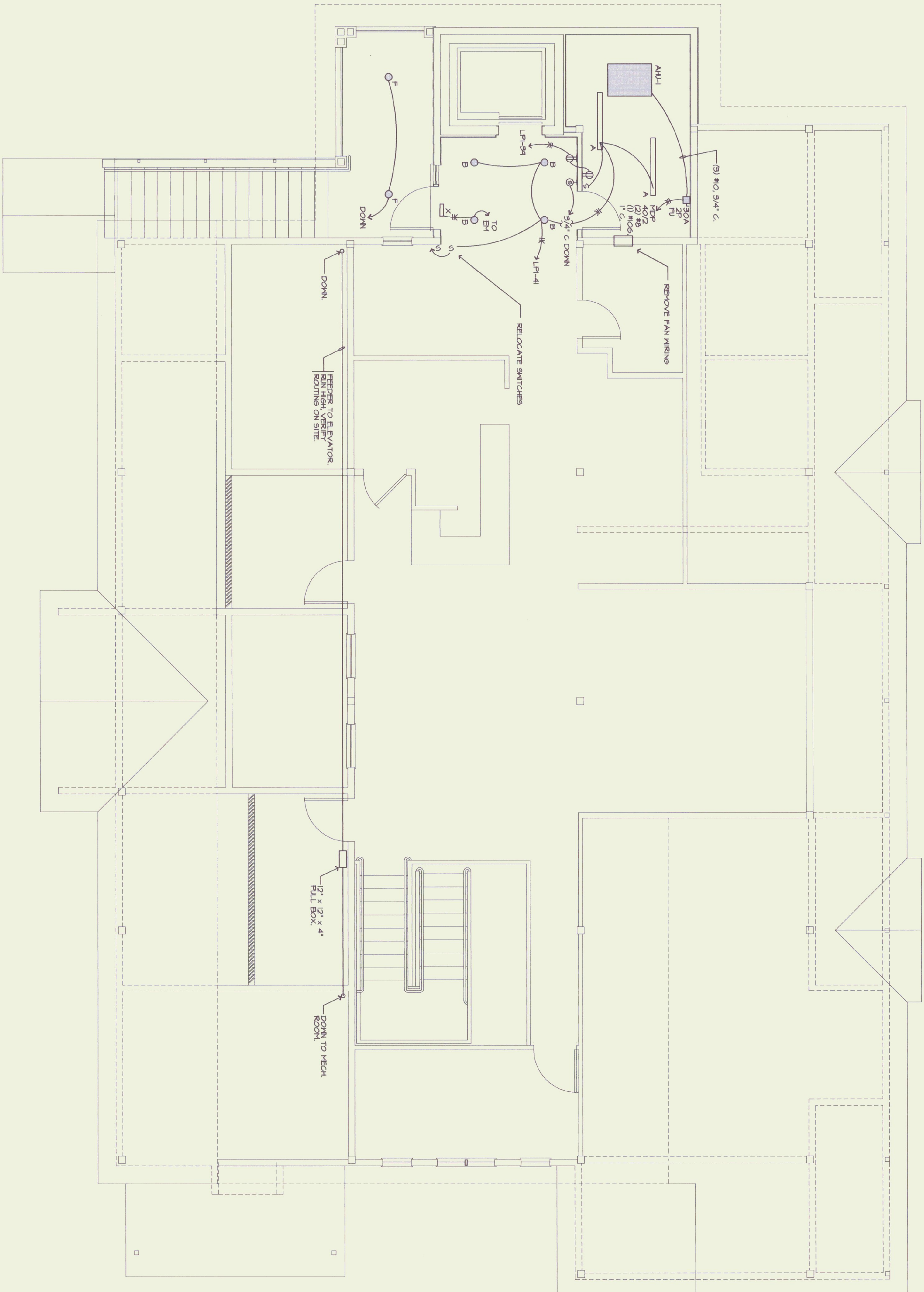


ELECTRICAL SYMBOL LIST

NOT ALL USED

- FLUORESCENT STRIP FIXTURE
- RECESSED, FLUORESCENT FIXTURE
- FLUORESCENT WALL FIXTURE
- WALL MOUNTED FIXTURE
- CEILING FIXTURE
- EMERGENCY BATTERY UNIT, NO ATTACHED HEADS
- EMERGENCY BATTERY UNIT, ATTACHED HEADS
- EXIT SIGN, SELF POWERED
- SINGLE POLE SWITCH 20 AMP 125 VOLT TOGGLE, FLUSH MOUNT
- 3-WAY SWITCH 20 AMP 125 VOLT TOGGLE, FLUSH MOUNT
- 4-WAY SWITCH 20 AMP 125 VOLT TOGGLE, FLUSH MOUNT
- PILOT LIGHT SWITCH 20 AMP 125 VOLT TOGGLE, FLUSH MOUNT
SEE NOTES AT DEVICE FOR SPECIFIC MOUNTING INSTRUCTIONS
- DINNER SWITCH 20 AMP 125 VOLT SLIDE TYPE
INSTALL IN SEPARATE SINGLE GANG BOX AND PROVIDE SEPARATE NEUTRAL FROM EACH DINNER TO BE CONTROLLED
- TRIPER SWITCH 20 AMP 125 VOLT ROTARY KNOB TYPE
15 MIN TRIPER WITH HOLD FEATURE, INSTALL IN SEPARATE SINGLE GANG BOX WHERE SHOWN ON PLANS. (MIN 3 1/2" WALL BOX)
- FLUORESCENT RECEPTACLE 20 AMP 125 VOLT FLUSH MOUNT
- FLUORESCENT RECEPTACLE ABOVE CANTER AND BACKSLASH VERIFY TRIPER MOUNTING HEIGHT ON SITE PRIOR TO INSTALL IN
- FLUORESCENT RECEPTACLE, SPLIT WIRED, TOP HALF SWITCH CONTROLLED
- FLUORESCENT RECEPTACLE, INSTALL IN 2-GANG BOX UNDER ONE 2-GANG FLUTE WIRE TO COMMON CIRCUIT AS SHOWN
- FLUORESCENT RECEPTACLE WITH WEATHERPROOF GASKETED COVER
- GROUND FAULT TYPE FLUORESCENT RECEPTACLE 20 AMP 125 VOLT CLASS A WITH 20 AMP FEED THROUGH RATING, PLATE TO MATCH OTHER DEVICES (MIN 3 1/2" WALL BOX)
- GROUND FAULT TYPE FLUORESCENT RECEPTACLE WITH WEATHERPROOF COVER, INSTALL IN SEPARATE SINGLE GANG BOX WHERE SHOWN ON PLANS (MIN 3 1/2" WALL BOX)
- TELEPHONE SYSTEM NETWORK INTERFACE (DEPARTATION) POINT FURNISHED AND INSTALLED BY LOCAL TELEPHONE SERVICE CO, QUANTITY AS REQUESTED BY OWNER TO SERVE NEEDS
- TELEPHONE OUTLET, BOY AND CANTY PROP BY EQUIPMENT PLATE MOUNTING AND EQUIPMENT COMPLETE BY PHONE VENDOR, UNDER SEPARATE CONTRACT WITH OWNER, SEE TELEPHONE RISER DIAGRAM
- TELEPHONE OUTLET, WALL OR PAV TYPE AS NOTED
- WIRING HOSE RUN TO PANEL, AS NOTED, (2) #12 (1) #12 GND MIN, BACK TO 20 AMP SINGLE POLE BREAKER UNLESS NOTED OTHERWISE.
- INDICATES (2) POWER CONDUCTORS WITH FULL SIZE GROUND.
- INDICATES (3) POWER CONDUCTORS WITH FULL SIZE GROUND.
- INDICATES (4) POWER CONDUCTORS WITH FULL SIZE GROUND.
- CABLE OR RACEWAY RUN CONCEALED IN WALLS OR CEILING
- CABLE OR RACEWAY RUN CONCEALED IN WALLS OR CEILING, SURFACE MOUNTED
- CONCEALED IN WALLS OR ABOVE CEILING, SURFACE MOUNTED
- CONCEALED IN UTILITY AREAS OR WHERE SPECIFICALLY ALLOWED.
- EMERGENCY LIGHTING LOW VOLTAGE (12 VDC) WIRING, RUN
- CONCEALED IN WALLS OR ABOVE CEILING, SURFACE MOUNTED
- CONCEALED IN UTILITY AREAS OR WHERE SPECIFICALLY ALLOWED.
- ELECTRICAL PANELBOARD, 120/208 VOLT 3 0 4 WIRE
- REFER TO POWER RISER DIAGRAM AND PANEL SCHEDULES FOR DETAILS
- TELEPHONE AND CANTY BACKBOARD BY EC, SEE SYSTEMS RISER DIAGRAMS FOR ADDITIONAL DETAILS AND SPECIFICATIONS
- DISCONNECT SWITCH BY EC, 250 OR 600 VOLT, NEHA 1, 100 BR AS NOTED, FIGURE SIZE AS NOTED OR REQUIRED PANEL ELEMENT, THE DELAY FEES SIZED FURNISHED AND INSTALLED BY EC PER EQUIPMENT MANUFACTURE VALUES.



1 SECOND FLOOR PLAN
SCALE: 1/4" = 1'-0"



NORTH ABOVE

NO.	REVISIONS	DATE
1	RELEASED FOR BID	4/25/14

2ND FLOOR LIGHTING

STATE OF VERMONT
DEPARTMENT
OF STATE BUILDINGS

nv engineering associates inc. pa

mechanical electrical consulting engineers
po box 1464 keene, new hampshire 03431
603 352 7007 fax 352 7005

INV No. 93356

BROWNING ASSOCIATES
PLANNING AND ARCHITECTURE
54 1/2 CENTER STREET
RUTLAND, VERMONT 05701

802-773-8245 FAX: 802-773-8235



SCALE: AS NOTED
DATE: MARCH 21, 1994

F2

SHEET NUMBER