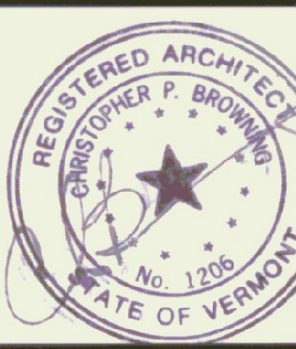


NO.	REVISIONS	DATE
1	SUBMITTED FOR REVIEW	1/29/84
2	RELEASED FOR REVIEW	5/16/84
3	RELEASED FOR BID	4/25/84



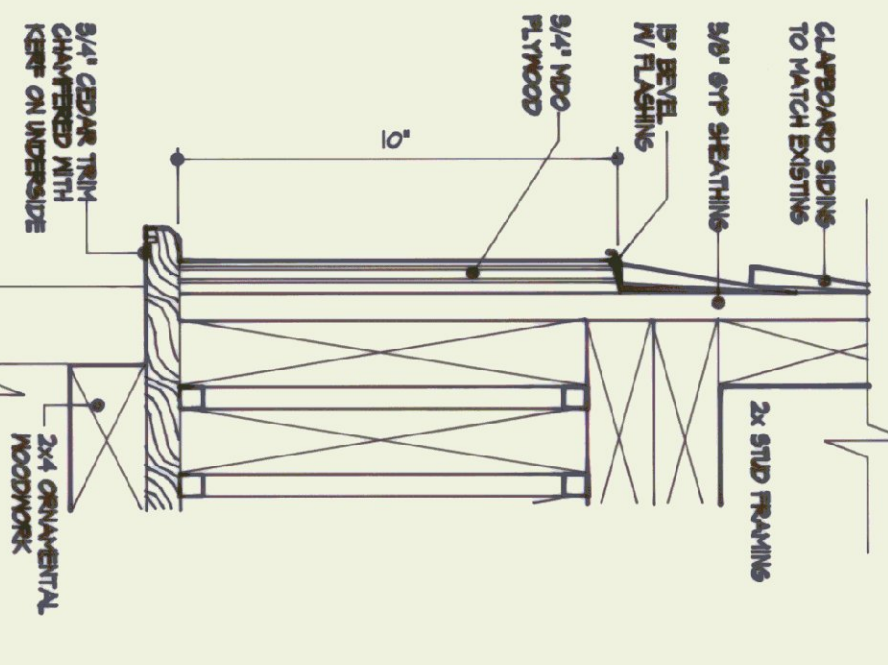
**RUTLAND STATE AIRPORT**  
STATE OF VERMONT  
DEPARTMENT OF STATE BUILDINGS  
2 GOVERNER AIKEN AVENUE  
MONTPELIER, VERMONT 05602

**WV ENGINEERING**  
CONSULTING ENGINEERS  
PO BOX 1464  
KEENE, NEW HAMPSHIRE 03431

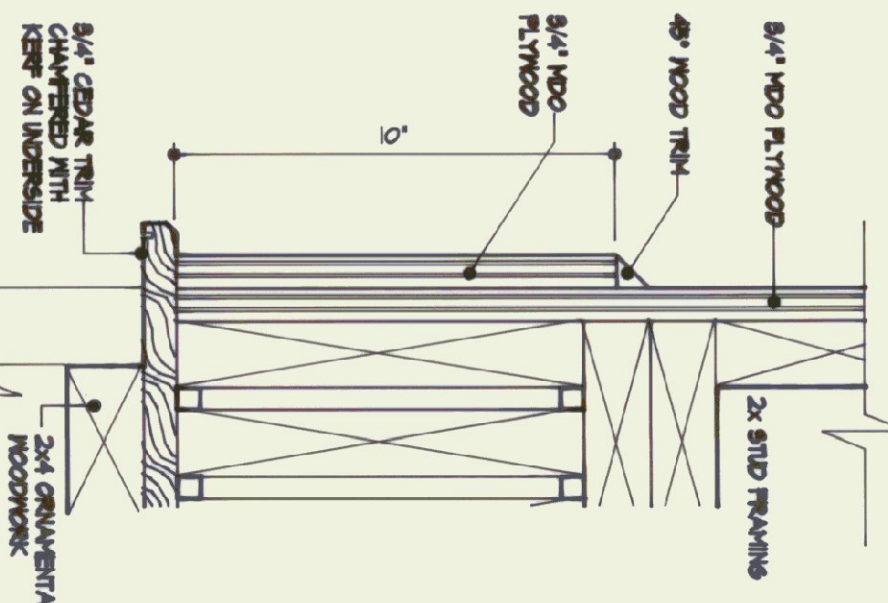
**BROWNING ASSOCIATES**  
PLANNING AND ARCHITECTURE  
54 1/2 CENTER STREET  
RUTLAND, VERMONT 05701

PHONE: 802-778-8245 FAX: 802-778-8295  
PHONE: 603-882-7007 FAX: 603-882-7005

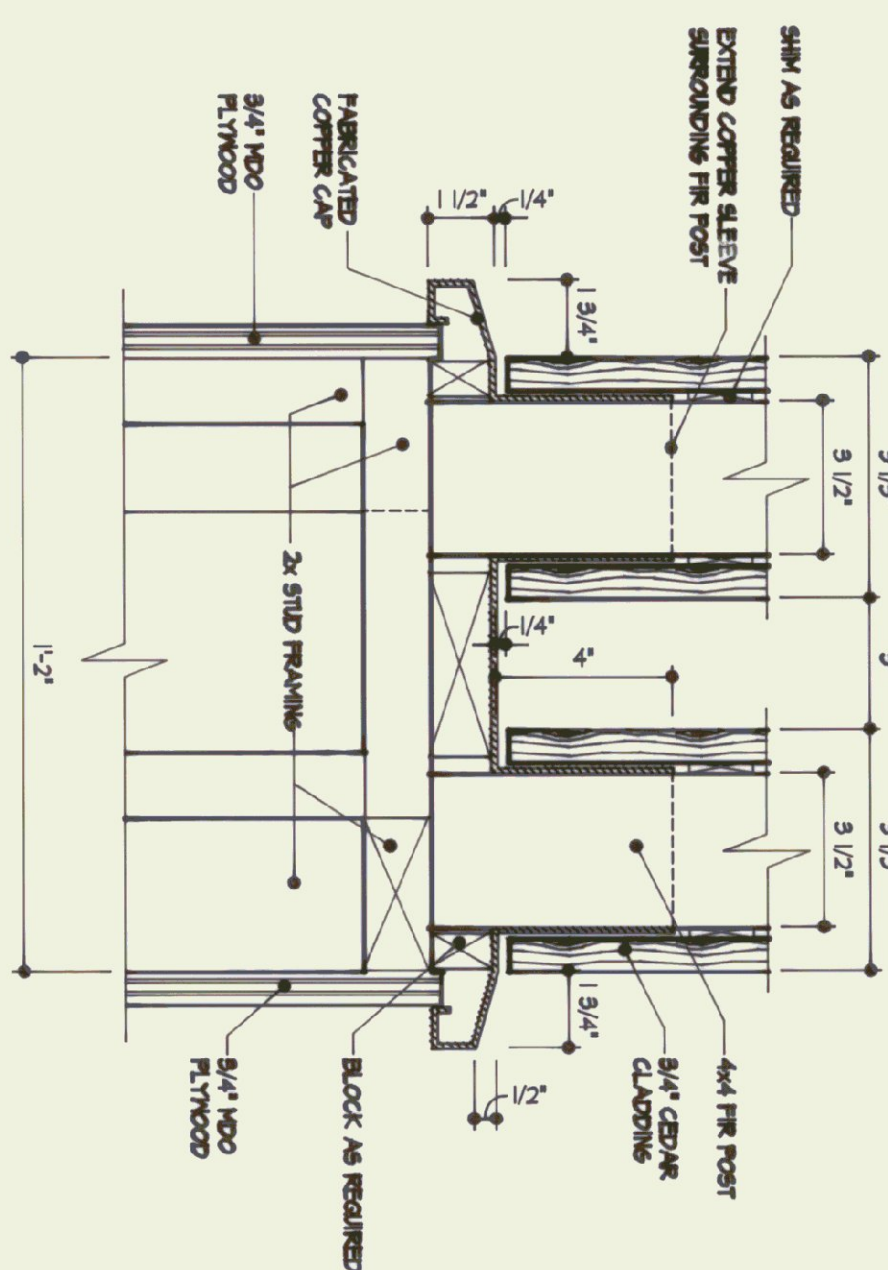
DESIGNED BY: CHS  
DRAWN BY: SERGIO  
CHECKED BY: TJC  
**AS**  
SHEET NUMBER  
JOB NO. 8022101  
DATE: 1/29/84



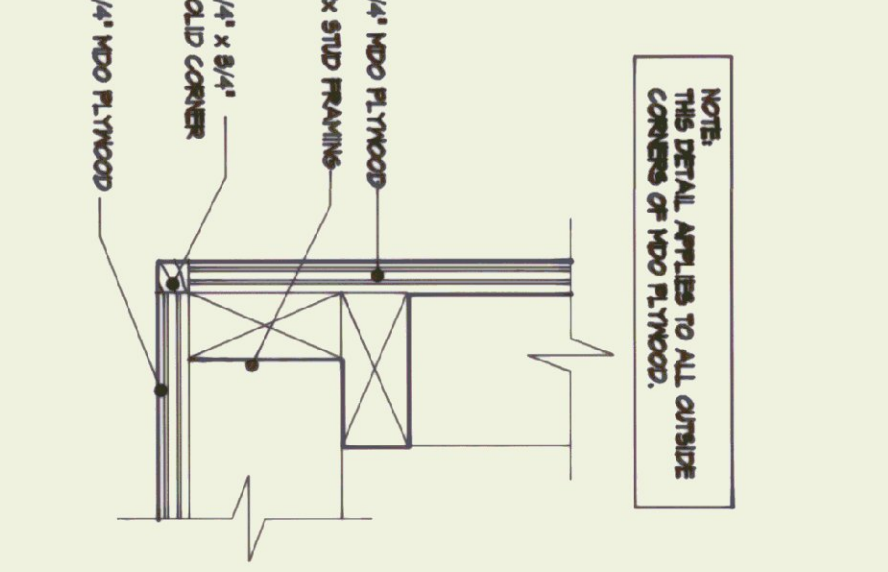
TRIM DETAIL 6  
8/4\"/>



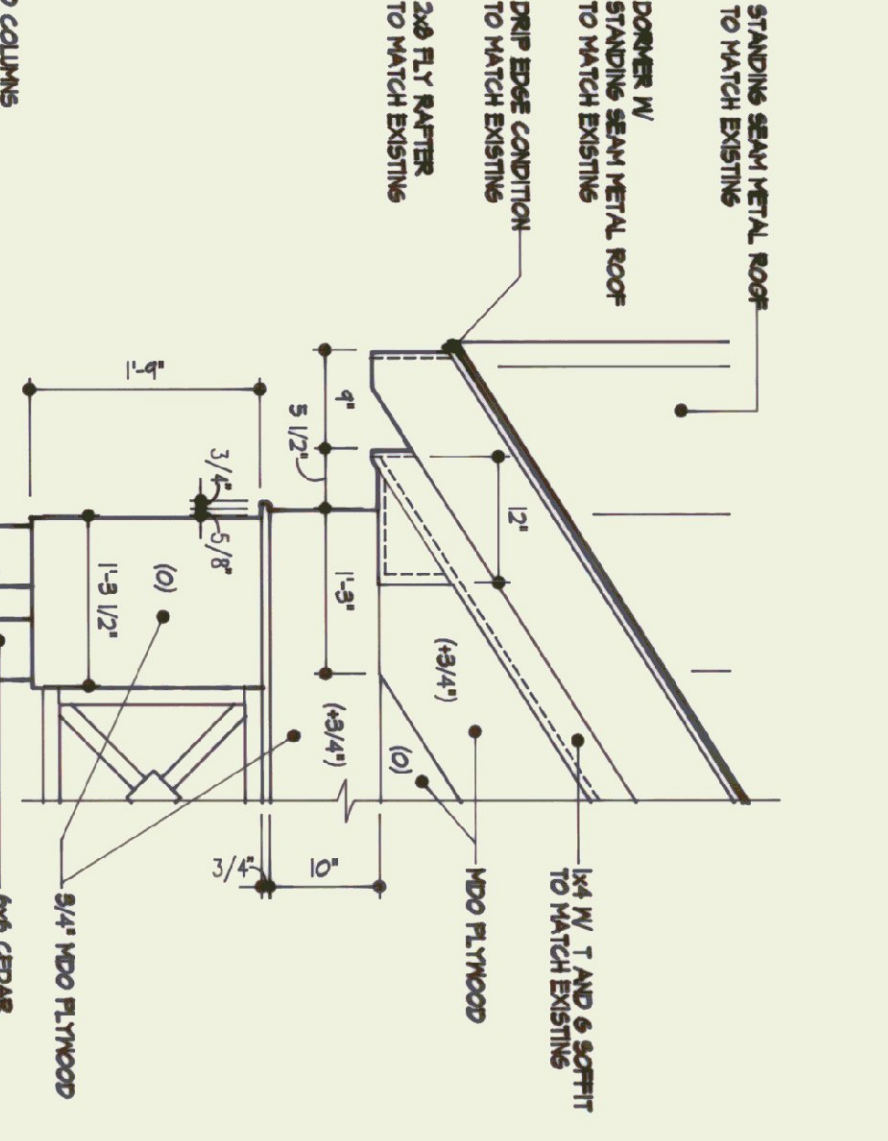
TRIM DETAIL 5  
8/4\"/>



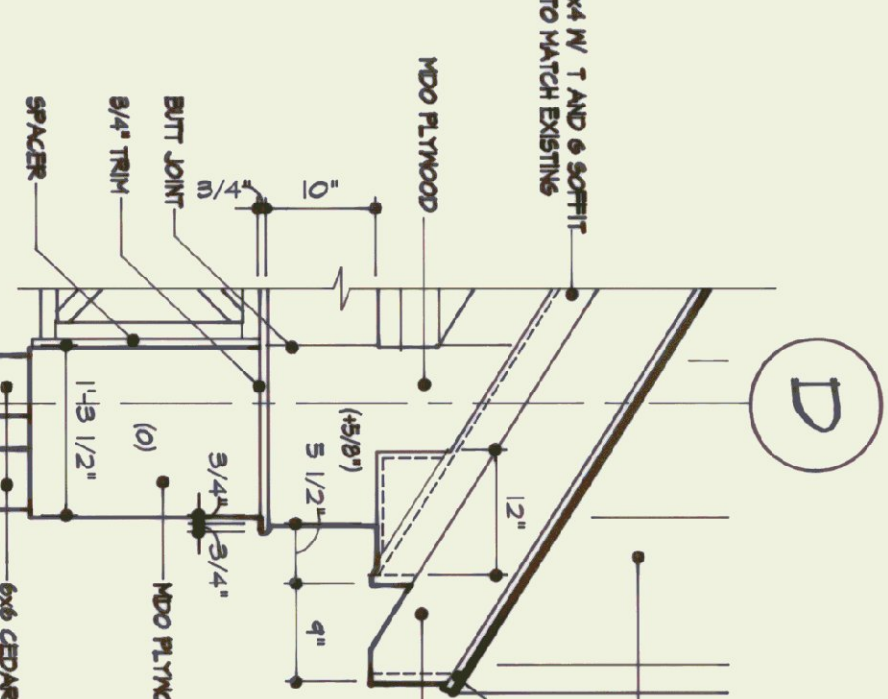
COPPER CAP DETAIL 4  
8/4\"/>



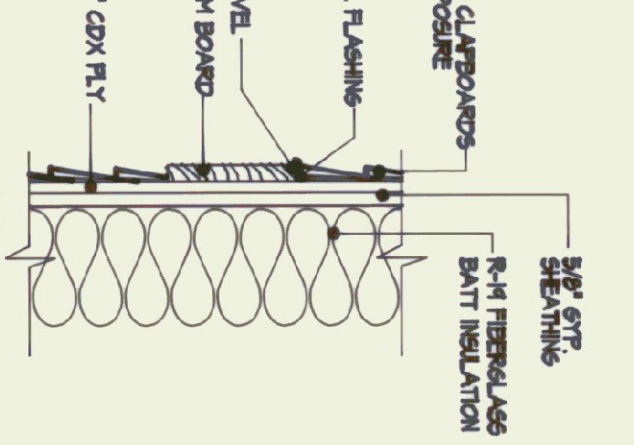
TYP. CORNER TRIM DETAIL 3  
8/4\"/>



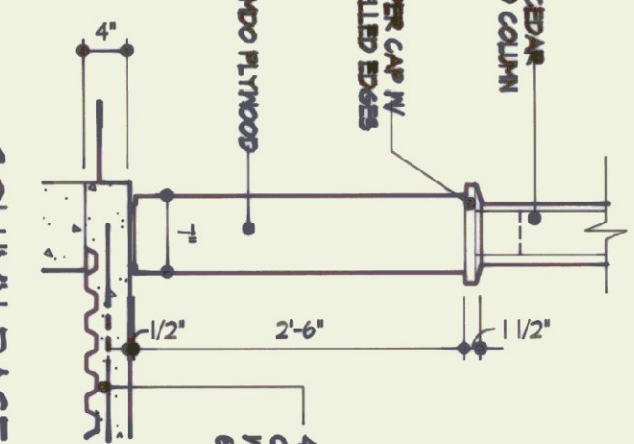
NORTH RAKE FASCIA DETAIL 2  
8/4\"/>



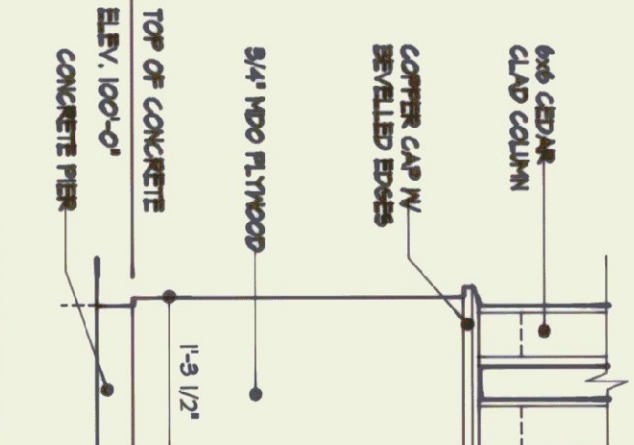
EAST RAKE FASCIA DETAIL 1  
8/4\"/>



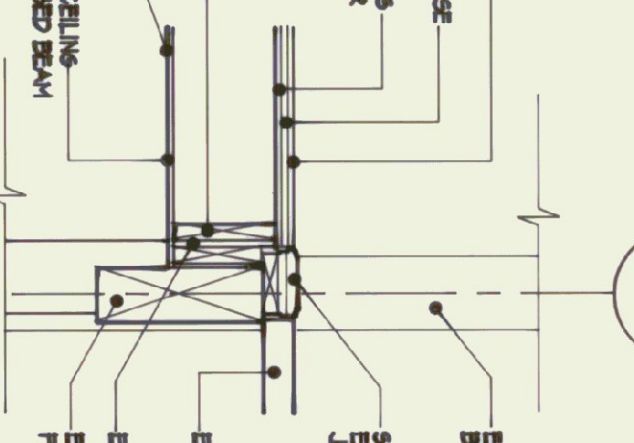
TRIM DETAIL 28  
1/2\"/>



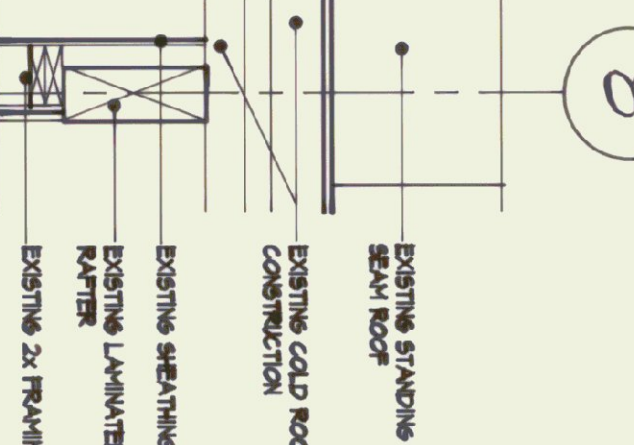
COLUMN BASE 12  
8/4\"/>



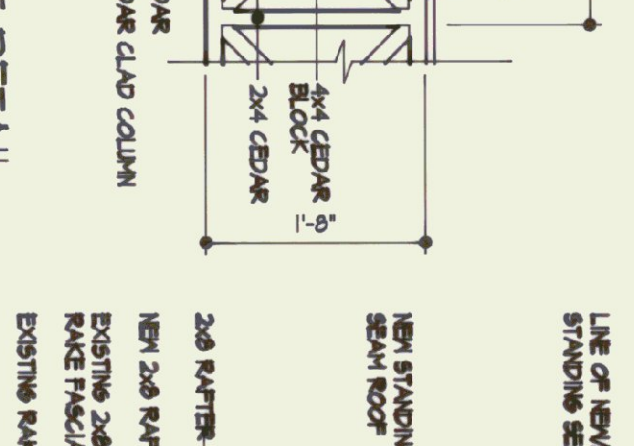
COLUMN BASE 11  
8/4\"/>



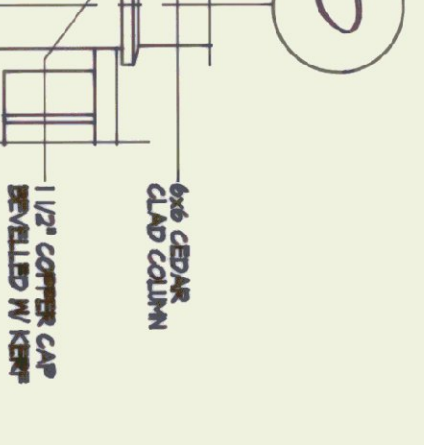
EXISTING BEAM SECTION DETAIL 10  
8/4\"/>



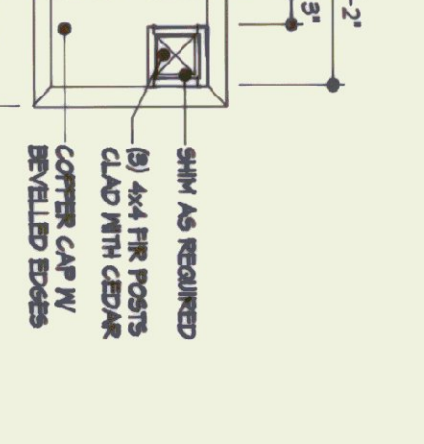
RAKE CONNECTION SECTION DETAIL 9  
8/4\"/>



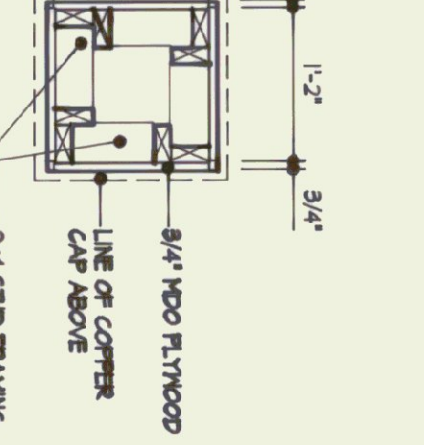
ORNAMENT DETAIL 8  
8/4\"/>



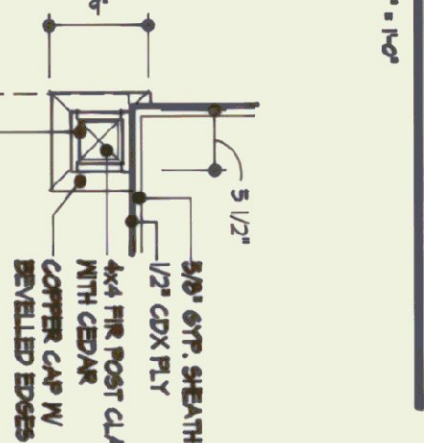
CORNER COLUMN SECTION DETAIL 28  
8/4\"/>



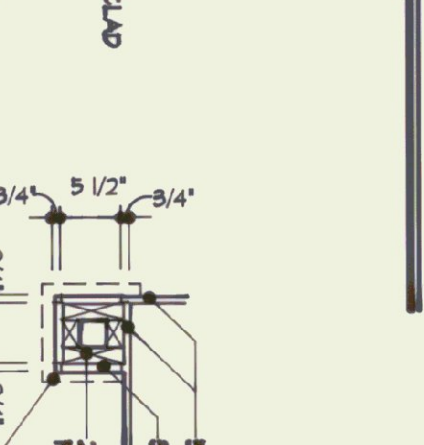
COLUMN SECTION 18  
8/4\"/>



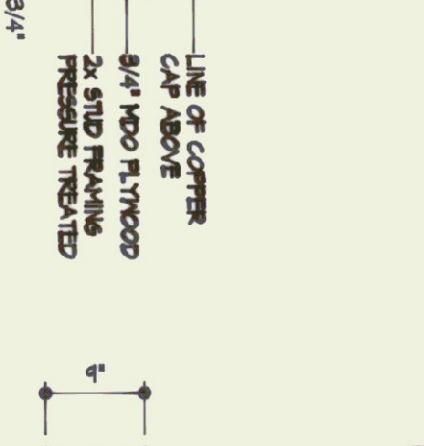
COLUMN SECTION 17  
8/4\"/>



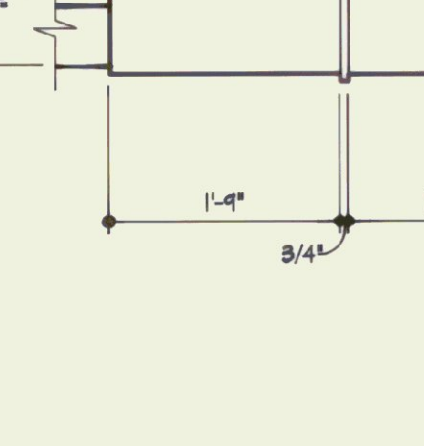
COLUMN SECTION 16  
8/4\"/>



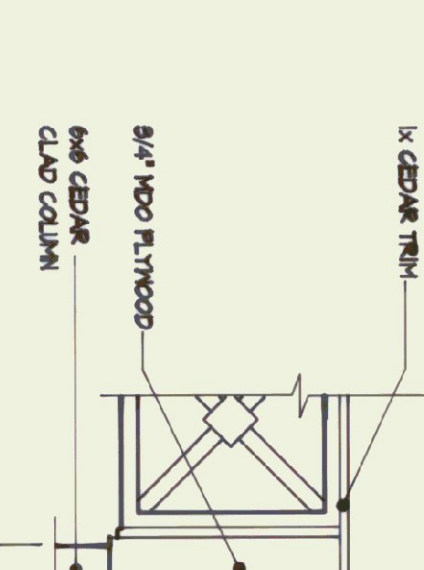
SECTION THRU COLUMN BASE 15  
8/4\"/>



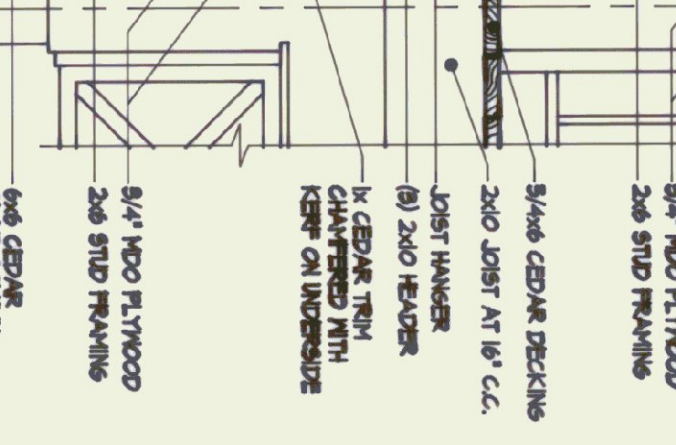
SECTION THRU COLUMN SECTION 14  
8/4\"/>



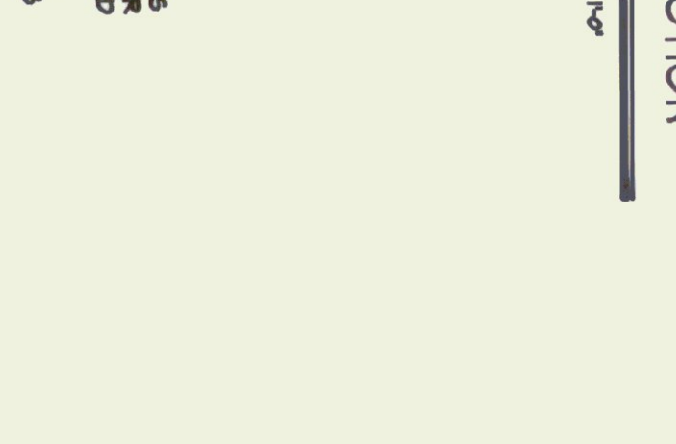
SECTION THRU COLUMN BASE 13  
8/4\"/>



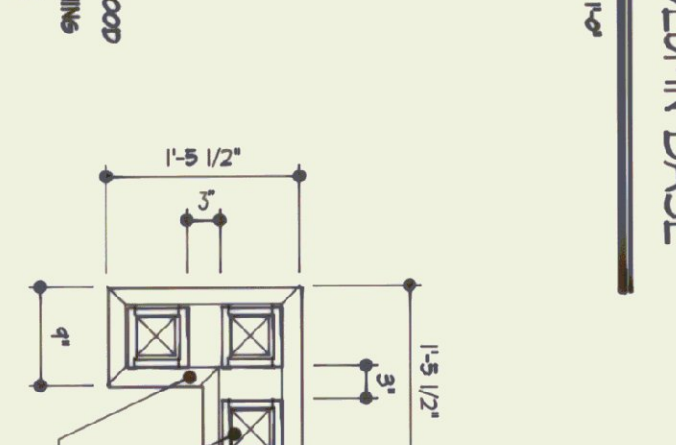
EAST CORNER COLUMN DETAIL 7  
8/4\"/>



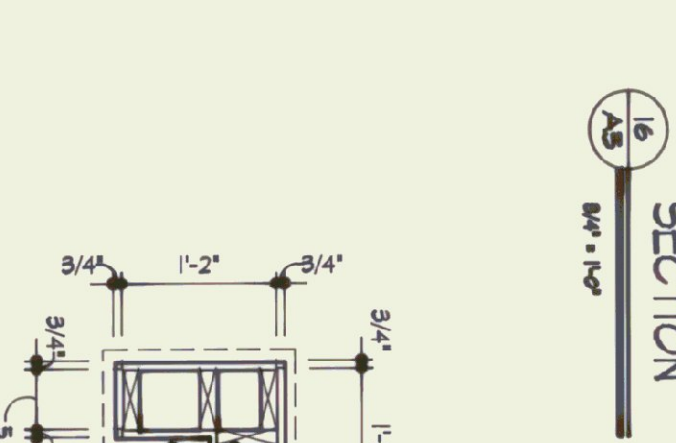
CORNER COLUMN SECTION DETAIL 28  
8/4\"/>



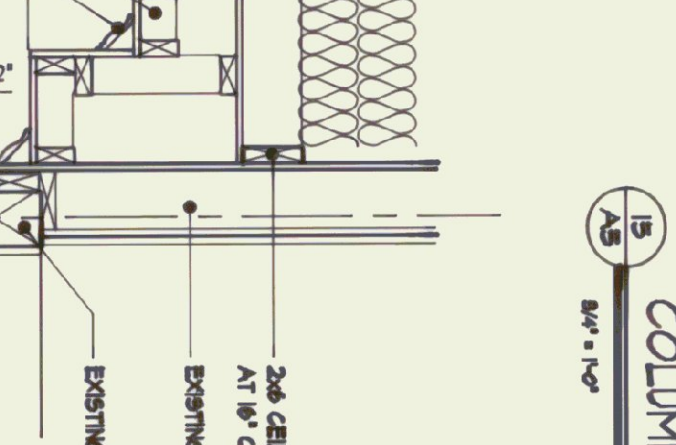
COLUMN SECTION 22  
8/4\"/>



COLUMN SECTION 21  
8/4\"/>



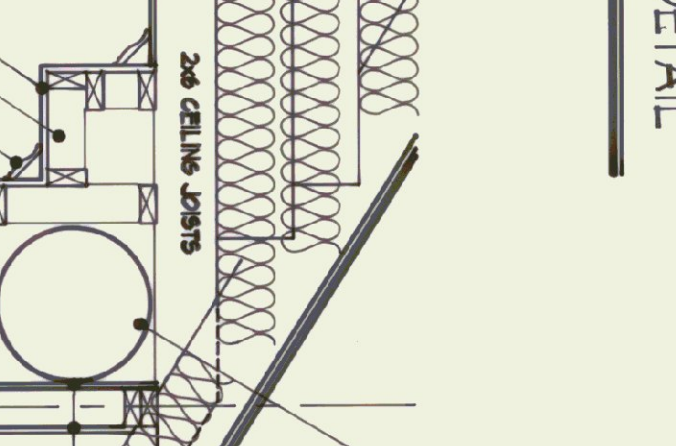
SECTION THRU COLUMN BASE 20  
8/4\"/>



SECTION THRU COLUMN SECTION 19  
8/4\"/>



SECTION THRU COLUMN BASE 18  
8/4\"/>



SOFFIT DETAIL 15  
8/4\"/>



SOFFIT DETAIL 14  
8/4\"/>