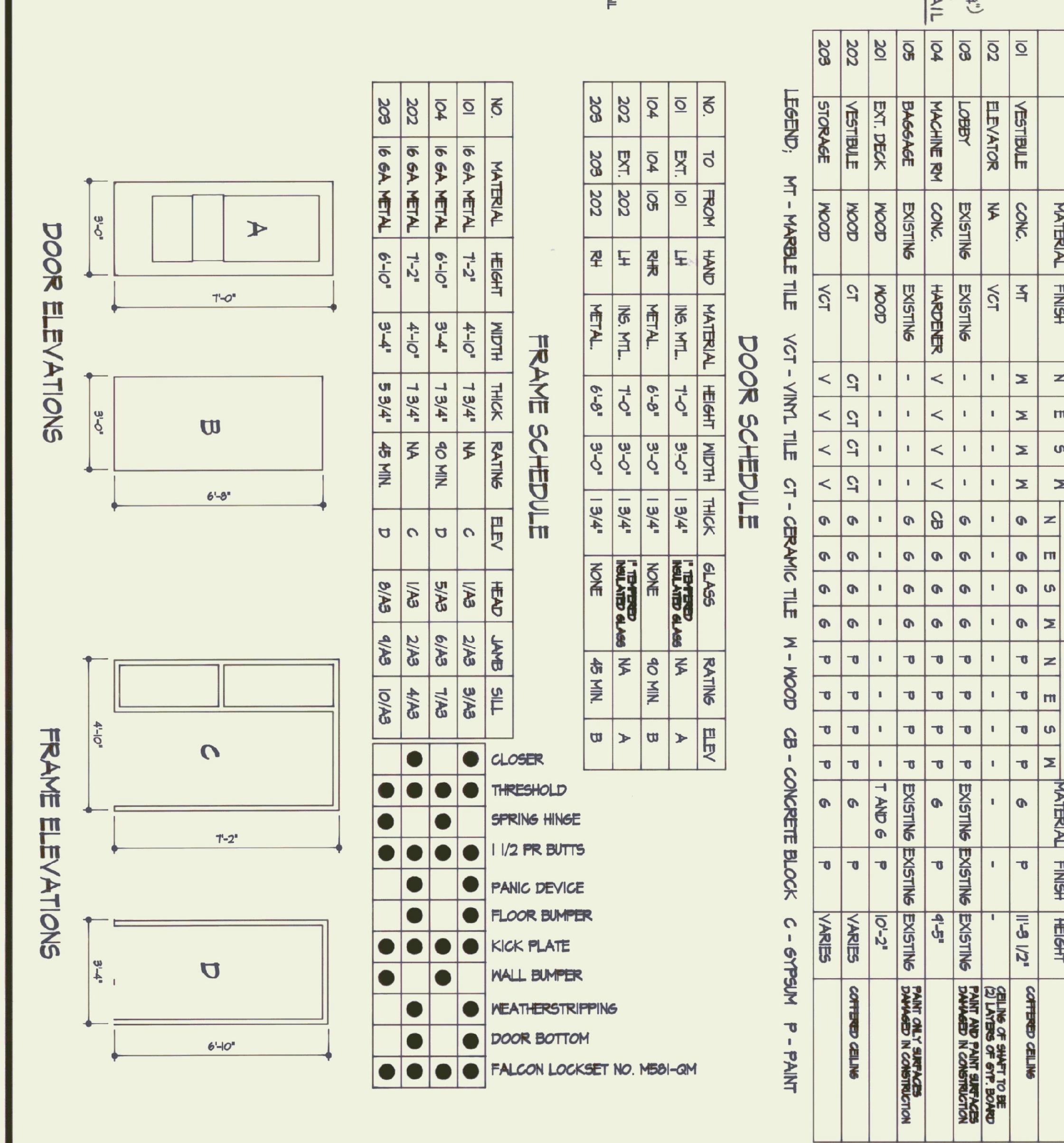
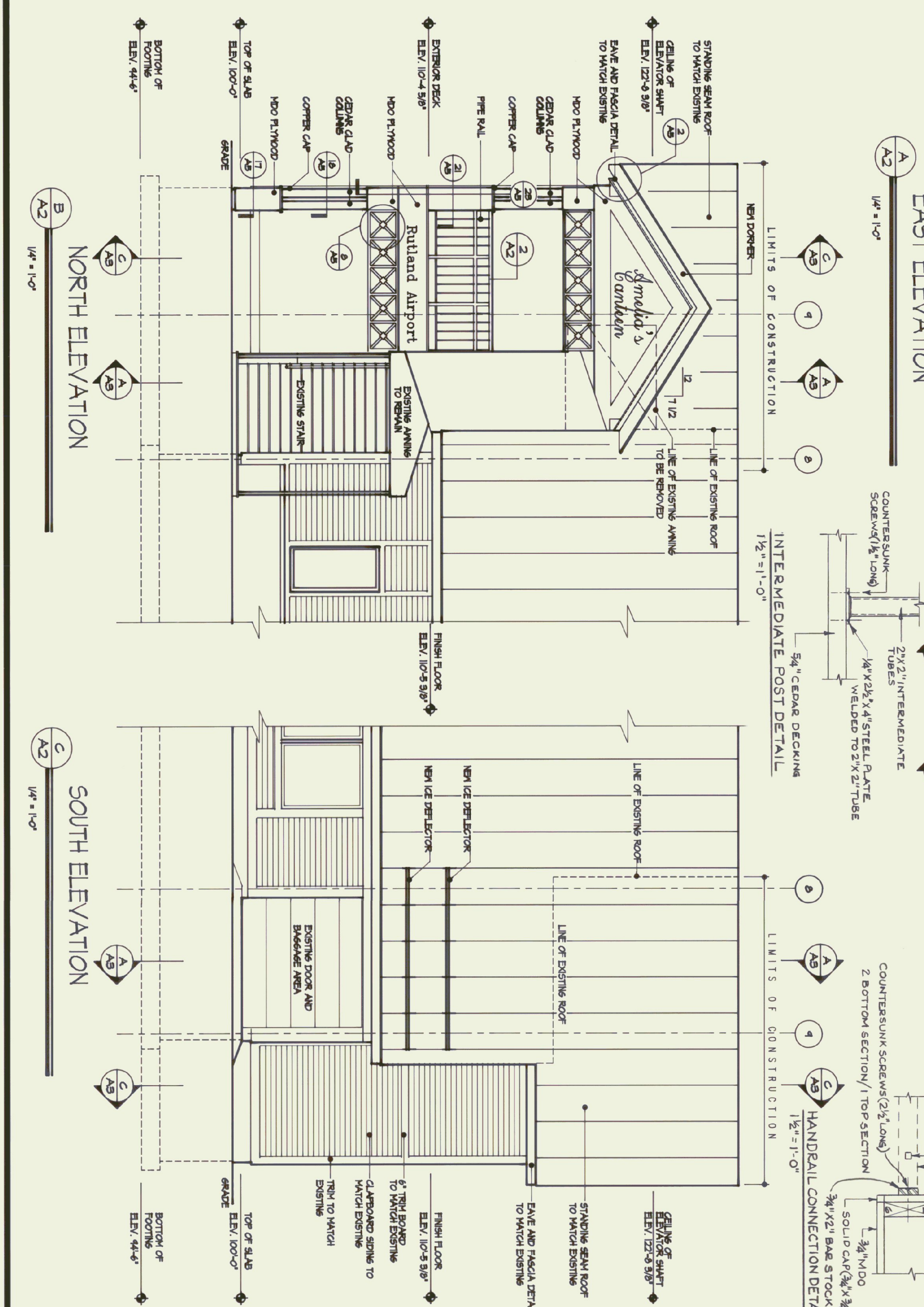


NO.	REVISIONS	DATE
1	CONCEPTUAL REVIEW	4/21/13
2	SUBMITTED FOR REVIEW	12/5/13
3	RELEASED FOR REVIEW	3/18/14
4	RELEASED FOR BIDS	4/25/14



RM. NO.	ROOM	FLOOR	FINISH	BASE	WALLS	CEILING	REMARKS
101	VESTIBULE	CONC.	MT	M	M	M	CONCRETE CEILING
102	ELEVATOR	NA	VCT	-	-	-	11'-9 1/2"
103	LOBBY	EXISTING	VCT	-	-	-	CEILING OF SHIRT TO BE PAINTED AND PAINT SURFACES DAMAGED IN CONSTRUCTION
104	MACHINE RM	CONC.	V	V	V	V	9'-5"
105	BAGGAGE	EXISTING	V	V	V	V	PAINT ONLY SURFACES DAMAGED IN CONSTRUCTION
201	EXT. DECK	WOOD	-	-	-	-	10'-2"
202	VESTIBULE	WOOD	CT	CT	CT	CT	VARIABLES
203	STORAGE	WOOD	VCT	V	V	V	VARIABLES

LEGEND: MT - MARBLE TILE VCT - VINYL TILE CT - CERAMIC TILE M - WOOD CB - CONCRETE BLOCK C - STYRUM P - PAINT

NO.	TO FROM	HAND	MATERIAL	HEIGHT	WIDTH	THICK	RATING	ELEV
101	101	LH	1/8" MTL	1'-0"	3'-0"	1 3/4"	A	A
104	104	RHR	METAL	6'-9"	1 3/4"	1 3/4"	B	B
202	202	LH	1/8" MTL	1'-0"	3'-0"	1 3/4"	A	A
203	203	RH	METAL	6'-9"	3'-0"	1 3/4"	B	B

NO.	MATERIAL	HEIGHT	WIDTH	THICK	RATING	ELEV	HEAD	JAMB	SILL
101	16 GA METAL	1'-2"	4'-10"	7 3/4"	NA	C	1/16"	2/16"	3/16"
104	16 GA METAL	6'-10"	3'-4"	7 3/4"	90 MIN	D	5/16"	6/16"	7/16"
202	16 GA METAL	1'-2"	4'-10"	7 3/4"	NA	C	1/16"	2/16"	3/16"
203	16 GA METAL	6'-10"	3'-4"	5 3/4"	45 MIN	D	5/16"	6/16"	7/16"

NO.	FRAME SCHEDULE	CLOSER	THRESHOLD	SPRING HINGE	1/2 PR BUTTS	PANIC DEVICE	FLOOR BUMPER	KICK PLATE	WALL BUMPER	WEATHERSTRIPPING	DOOR BOTTOM	FALCON LOCKSET NO. M581-QM
101	A	●	●	●	●	●	●	●	●	●	●	●
104	B	●	●	●	●	●	●	●	●	●	●	●
202	C	●	●	●	●	●	●	●	●	●	●	●
203	D	●	●	●	●	●	●	●	●	●	●	●

DESIGNED BY: CRB  
 DRAWN BY: SERICB  
 CHECKED BY: TC

**BROWNING ASSOCIATES**  
 PLANNING AND ARCHITECTURE  
 54 1/2 CENTER STREET  
 RUTLAND, VERMONT 05701  
 PHONE: 802-778-8248 FAX: 802-778-8285

**WV ENGINEERING**  
 CONSULTING ENGINEERS  
 PO BOX 1464  
 KEENE, NEW HAMPSHIRE 03431  
 PHONE: 603-852-1001 FAX: 603-852-1005

**RUTLAND STATE AIRPORT**  
 STATE OF VERMONT  
 DEPARTMENT OF STATE BUILDINGS  
 2 GOVERNOR AIKEN AVENUE  
 MONTPELIER, VERMONT 05602

REGISTERED ARCHITECT  
 CHRISTOPHER P. BROWNING  
 No. 1206  
 STATE OF VERMONT

PROJECT: DATE: SEPTEMBER 1989  
 DATE: 4/21/13  
 DATE: 12/5/13  
 DATE: 3/18/14  
 DATE: 4/25/14

DESIGN TITLE: ELEVATIONS  
 SHEET NUMBER: A2  
 JOB NO.: 05.02.01