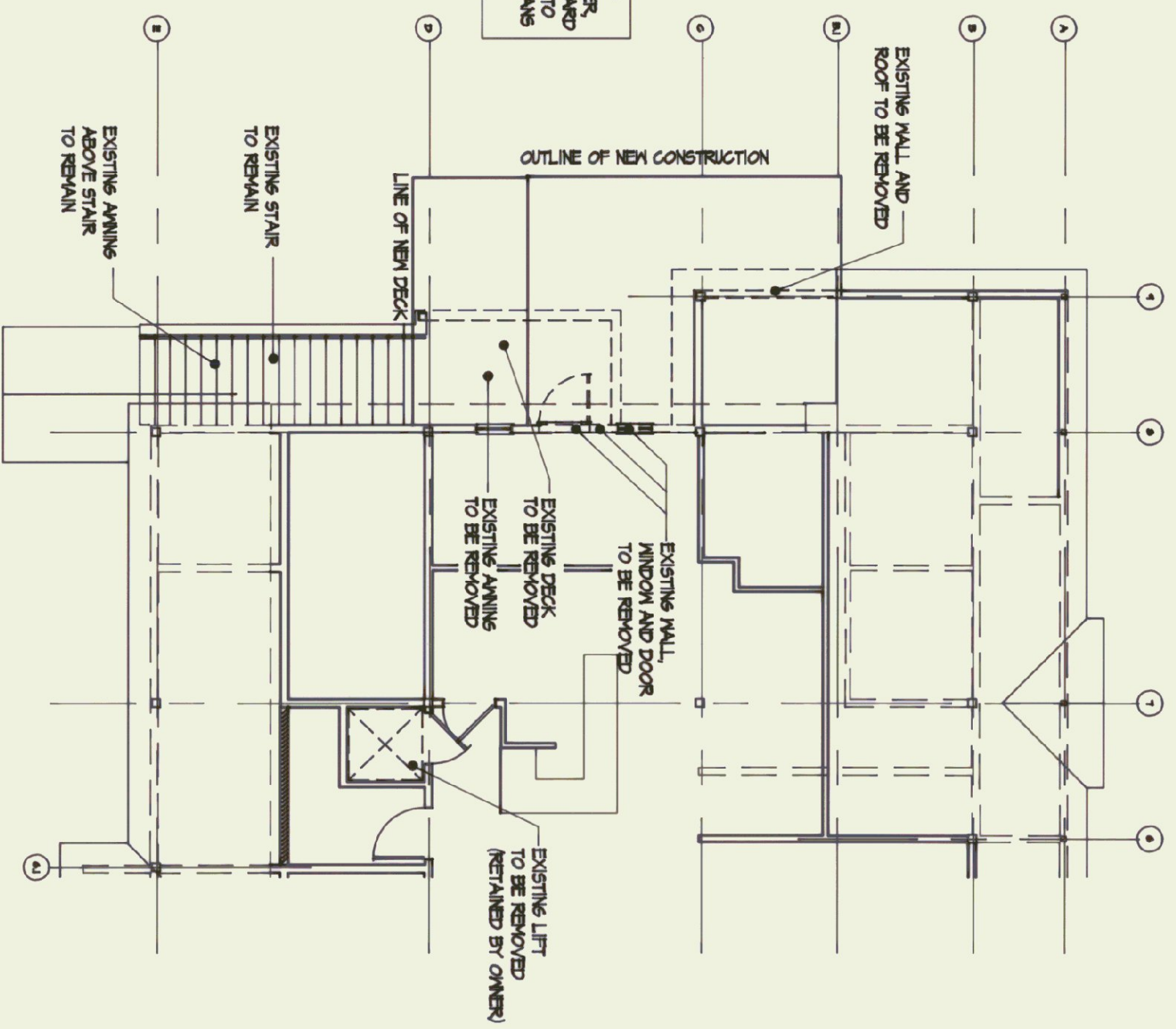
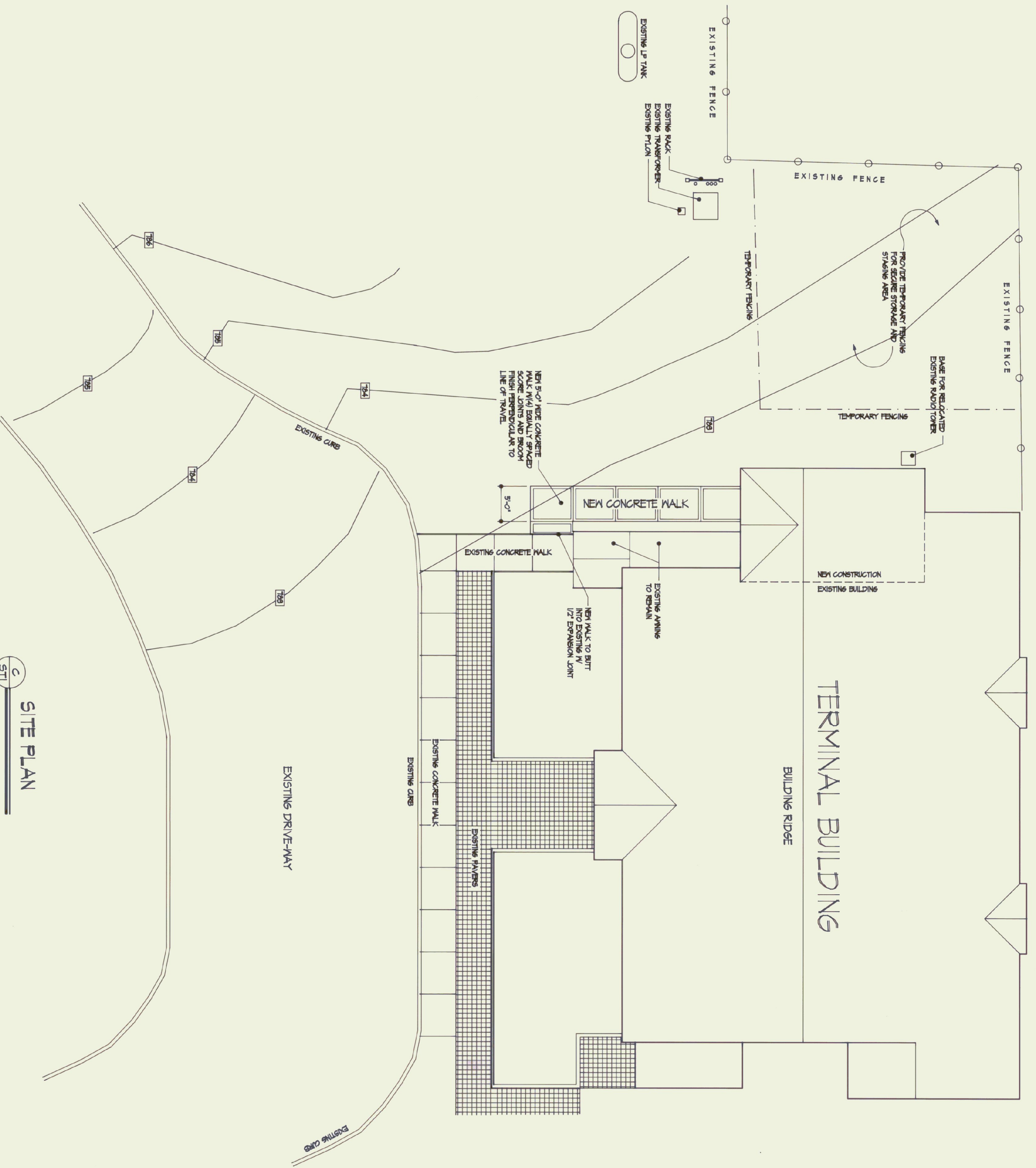


**FIRST FLOOR  
DEMOLITION PLAN**  
1/8" = 1'-0"  
STI A



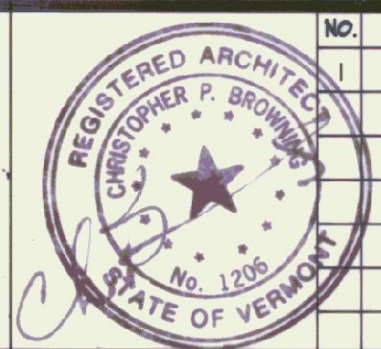
**SECOND FLOOR  
DEMOLITION PLAN**  
1/8" = 1'-0"  
STI B



**SITE PLAN**  
1/8" = 1'-0"  
STI C



NO.	REVISIONS	DATE
1	RELEASED FOR BIDS	4/28/94



**RUTLAND STATE AIRPORT**  
STATE OF VERMONT  
DEPARTMENT OF STATE BUILDINGS  
2 GOVERNOR AIKEN AVENUE  
MONTPELIER, VERMONT 05602

**WV ENGINEERING**  
CONSULTING ENGINEERS  
PO BOX 1464  
KEENE, NEW HAMPSHIRE 03431

**BROWNING ASSOCIATES**  
PLANNING AND ARCHITECTURE  
54 1/2 CENTER STREET  
RUTLAND, VERMONT 05701

DESIGNED BY: CMB  
DRAWN BY: SGT/OPS  
CHECKED BY: TJC  
**SITE/DEMOLITION PLAN**  
SHEET NUMBER  
**STI**  
JOB NO. 89-02101

THE EXISTING DECK AND SECTION OF ANNEX IS TO BE REMOVED. HOWEVER, DO ALL THAT IS REQUIRED WITH REGARD TO CONSTRUCTION AND SCHEDULING TO MAINTAIN THE EXIST AS A VIABLE REMAIN OF BRICKS.