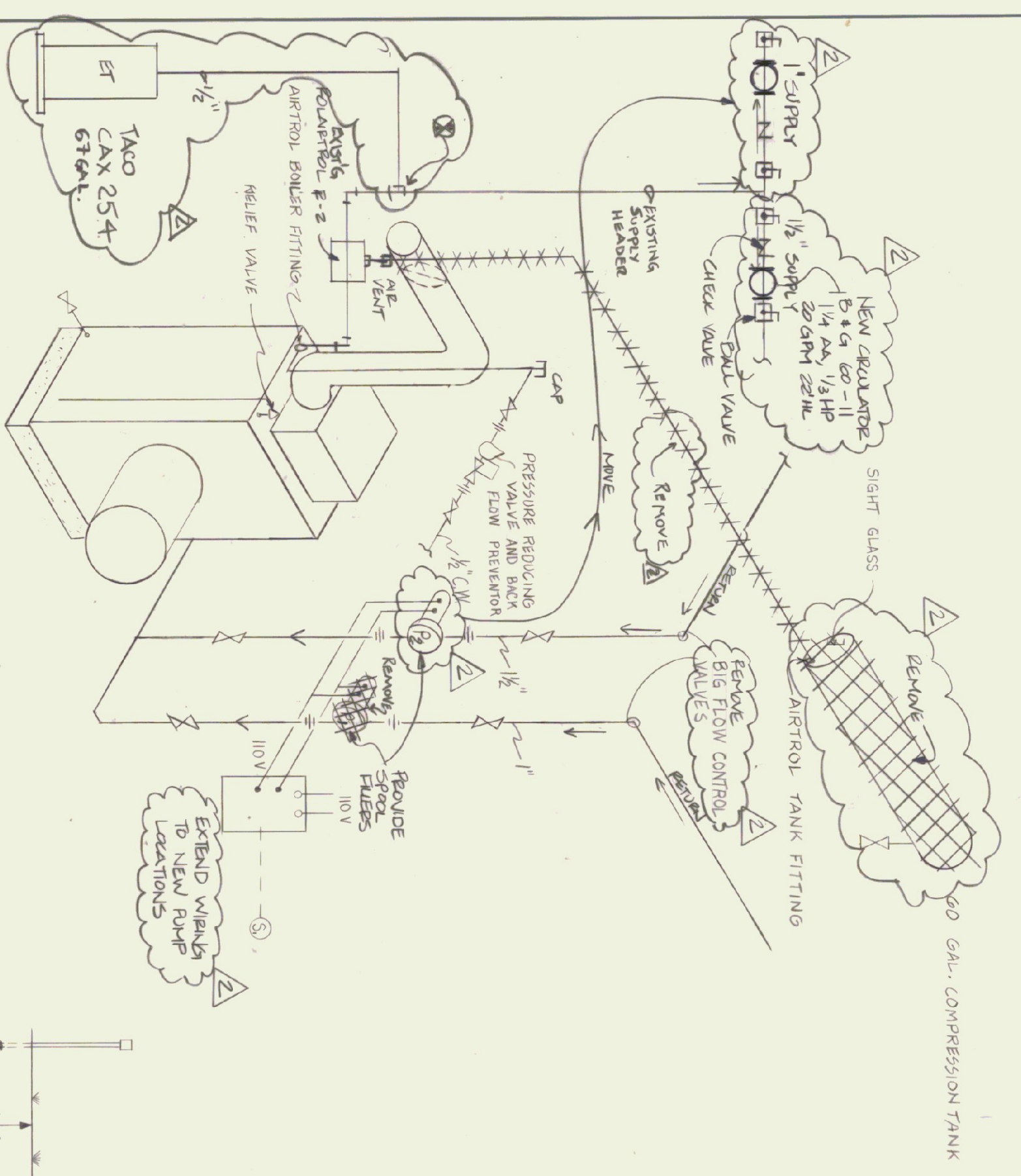
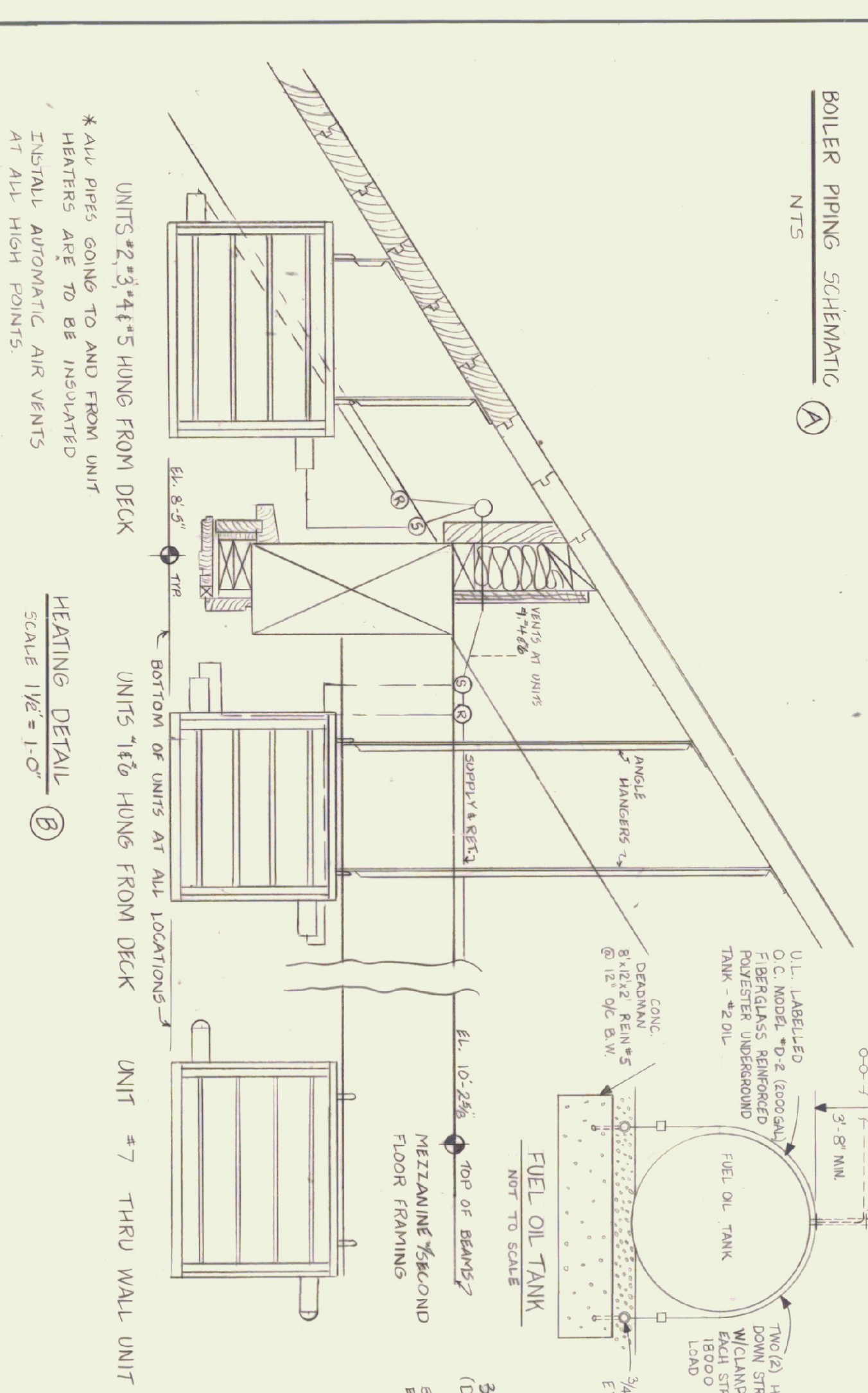


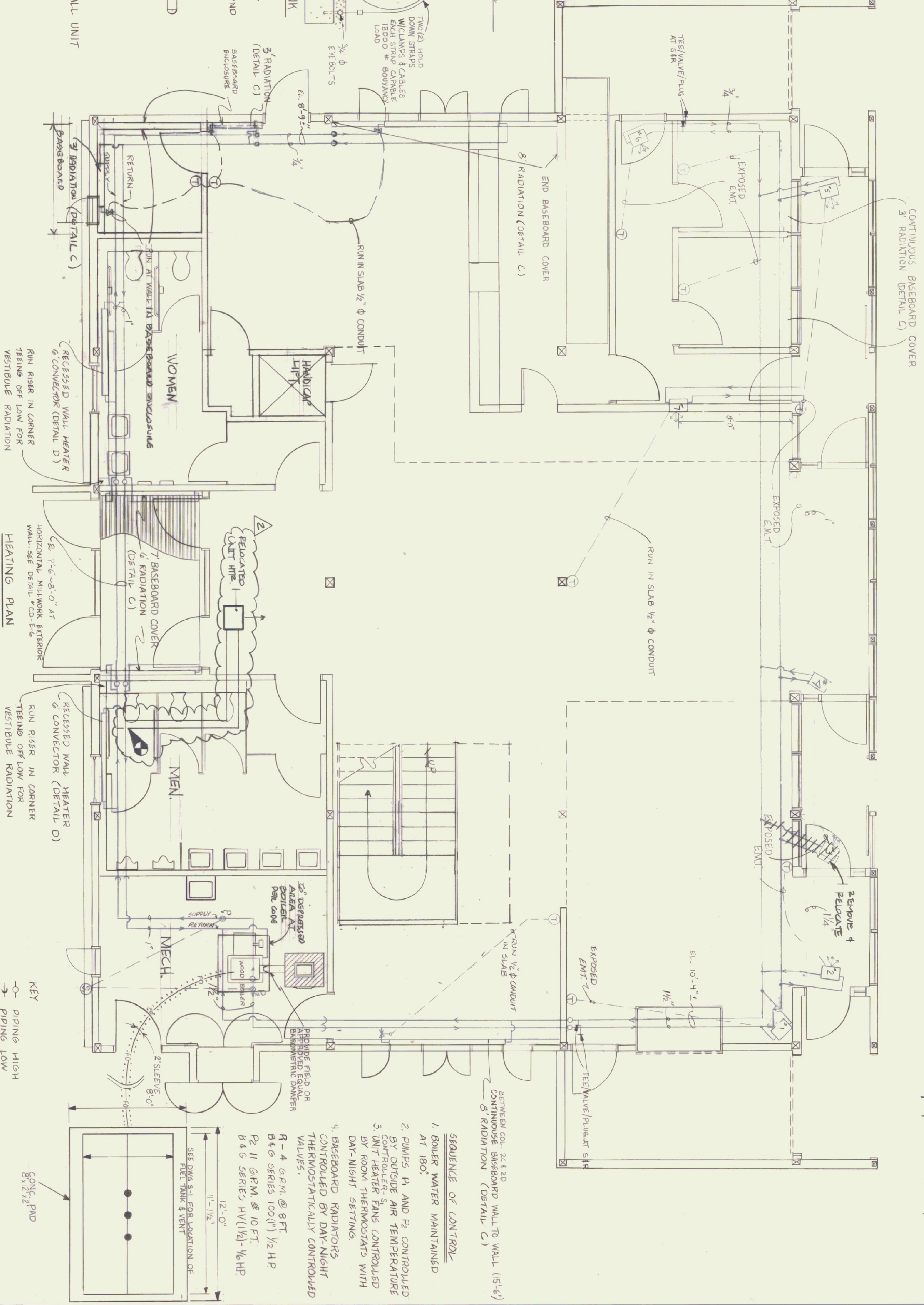
| ISSUE RECORD | NO. | DATE | DESCRIPTION |
|--------------|----------|---|-------------|
| 1 | 12-17-84 | DESIGNS | 1 |
| 2 | 12-20-84 | REVISED SECTIONS HILITE FOR A NEW VENTILATION SCHEDULE | 2 |
| 3 | 12-15-87 | REVISIONS - AIR PIPING, MORE UNITS | 7 |



BOILER PIPING SCHEMATIC
UNITS



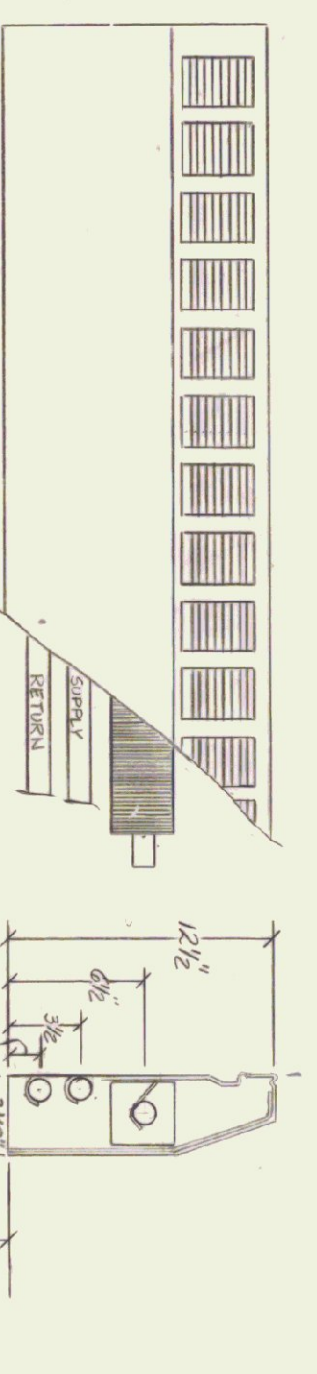
HEATING DETAIL
SCALE 1/2" = 1'-0"



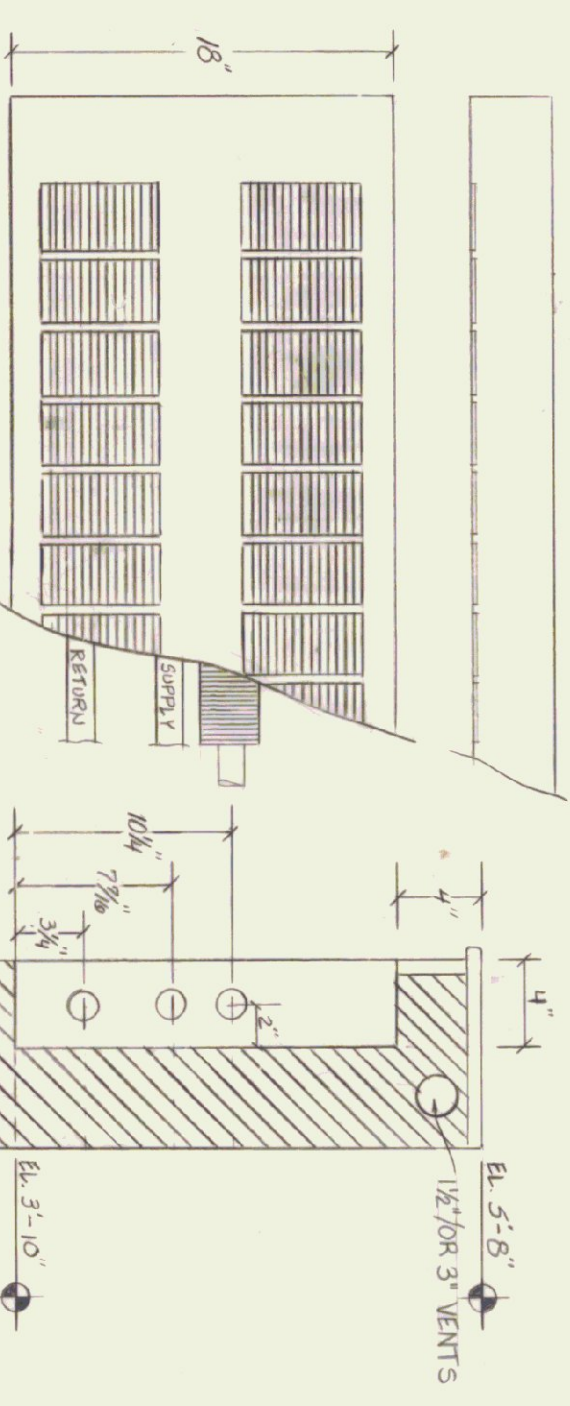
HEATING PLAN
SCALE 1/4" = 1'-0"

KEY
→ PIPING HIGH
→ PIPING LOW

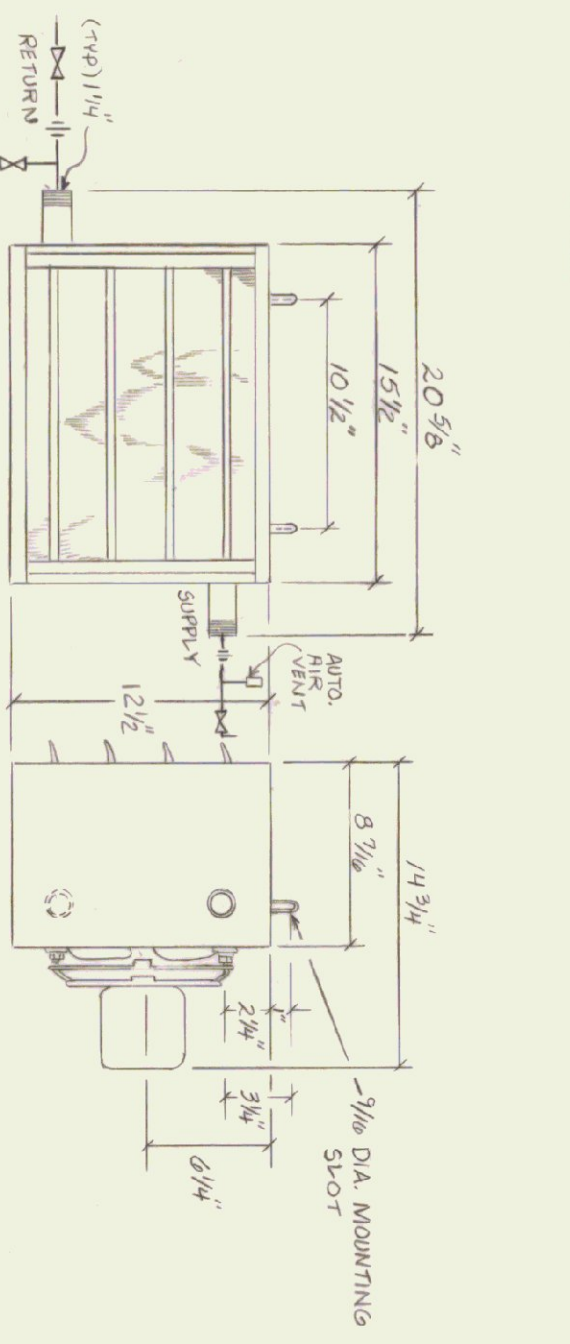
REVISIONS:
10-30-84
AS BUILT



BASEBOARD HEATING UNIT
SCALE 1/2" = 1'-0"



FULLY RECESSED WALL HEATER
SCALE 1/2" = 1'-0"



UNIT HEATER
SCALE 1/2" = 1'-0"

STATE OF VERMONT
DIVISION OF STATE BUILDINGS
AGENCY OF ADMINISTRATION
MONTPELIER, VERMONT

RUTLAND TERMINAL BUILDING AIR 23-2024
HEATING PLAN
CLARENDON, VERMONT

DWG. NO. H-1
16 OF 20

DATE: 6/8/84
DRAWN BY: AS NOTED
APPROVED BY: AS NOTED
R. TETTERLUST