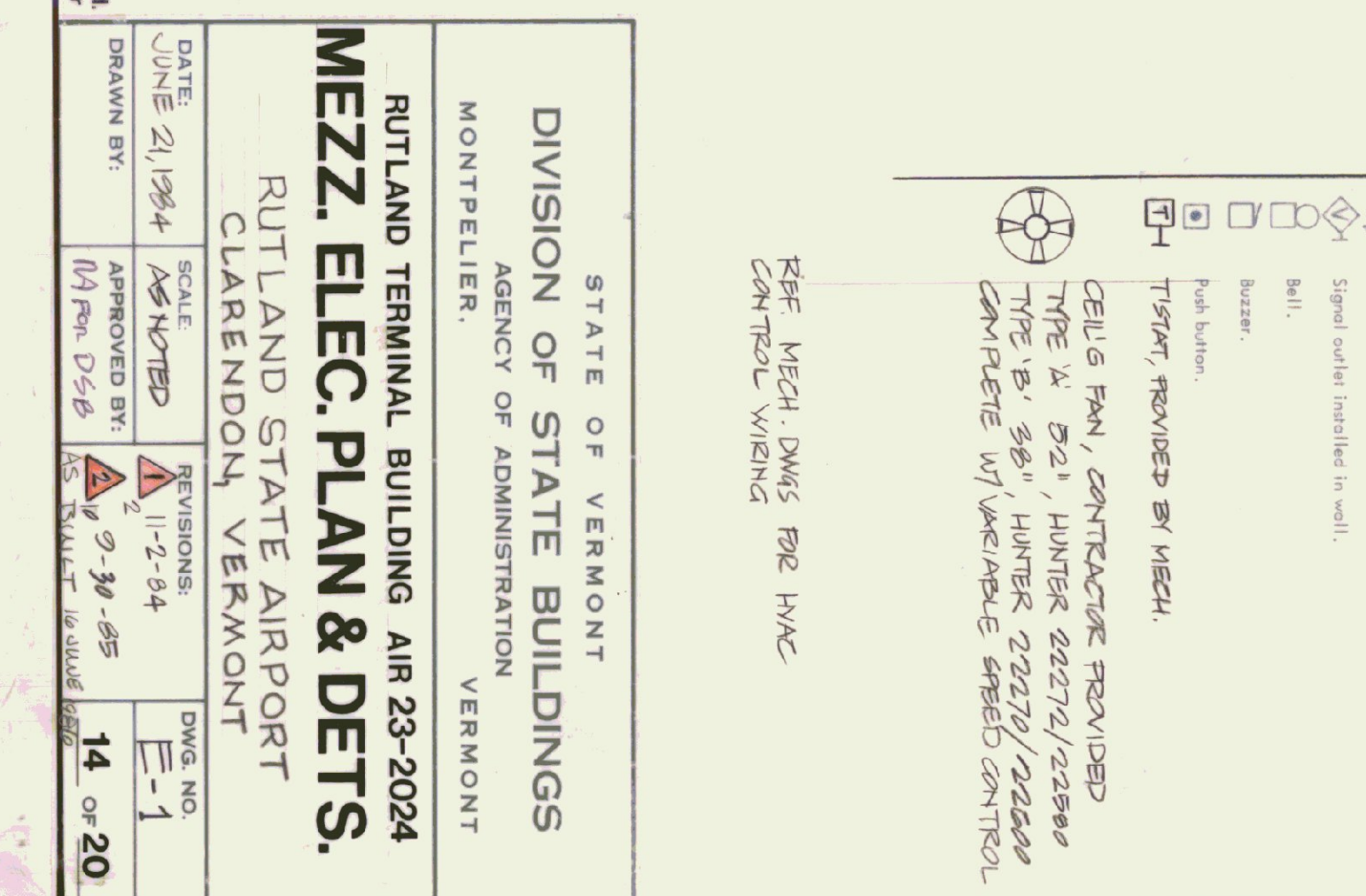
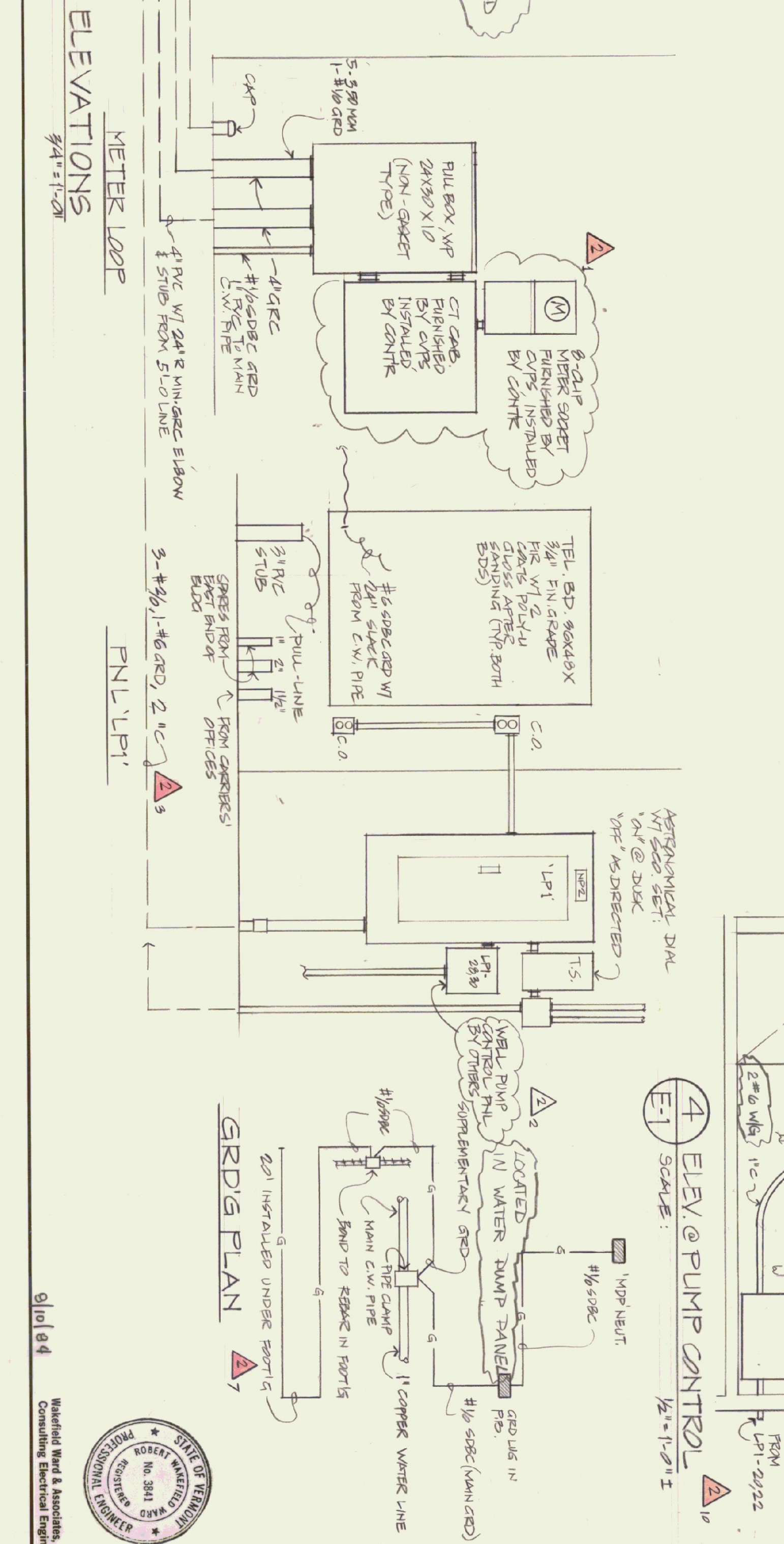
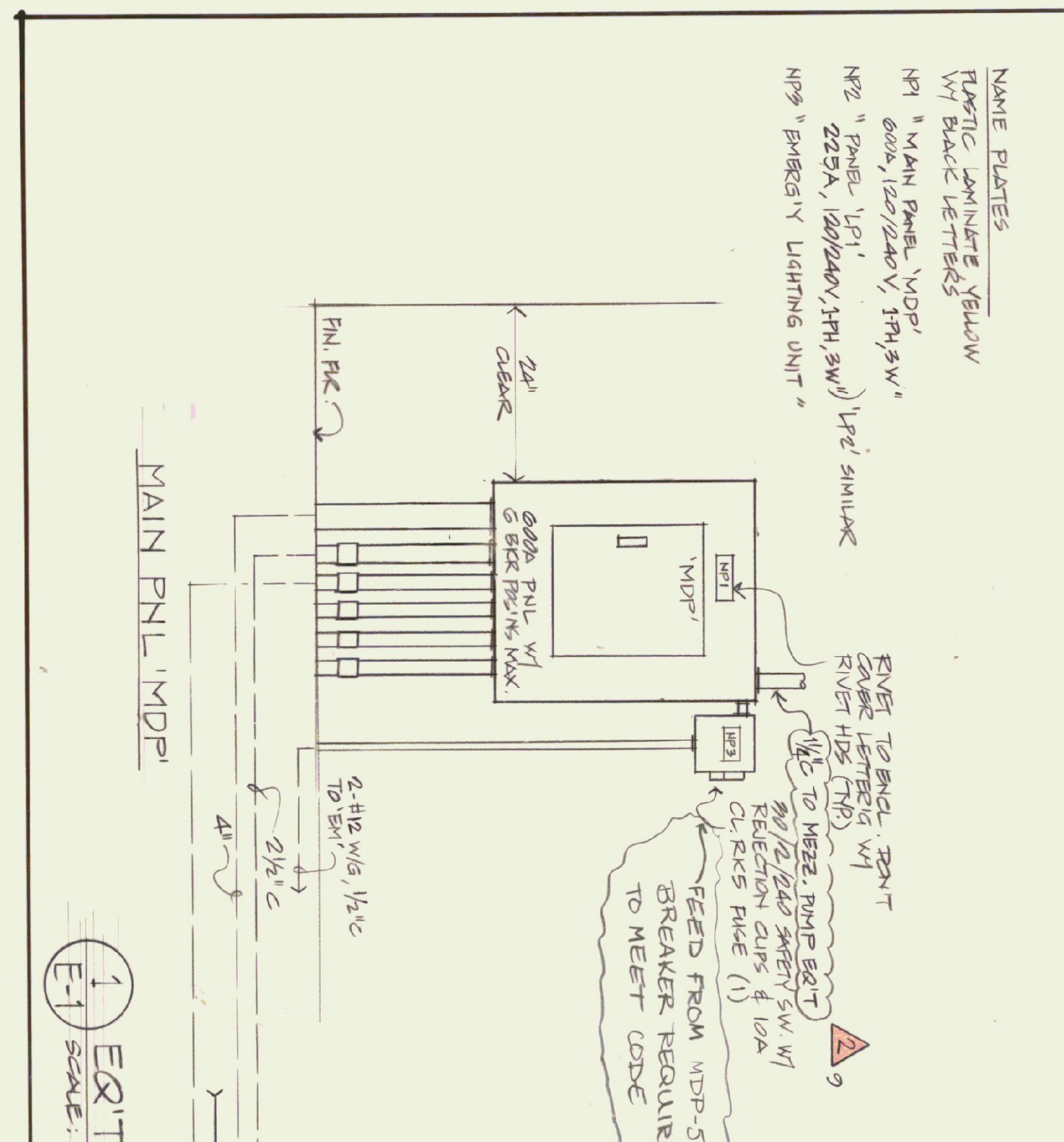
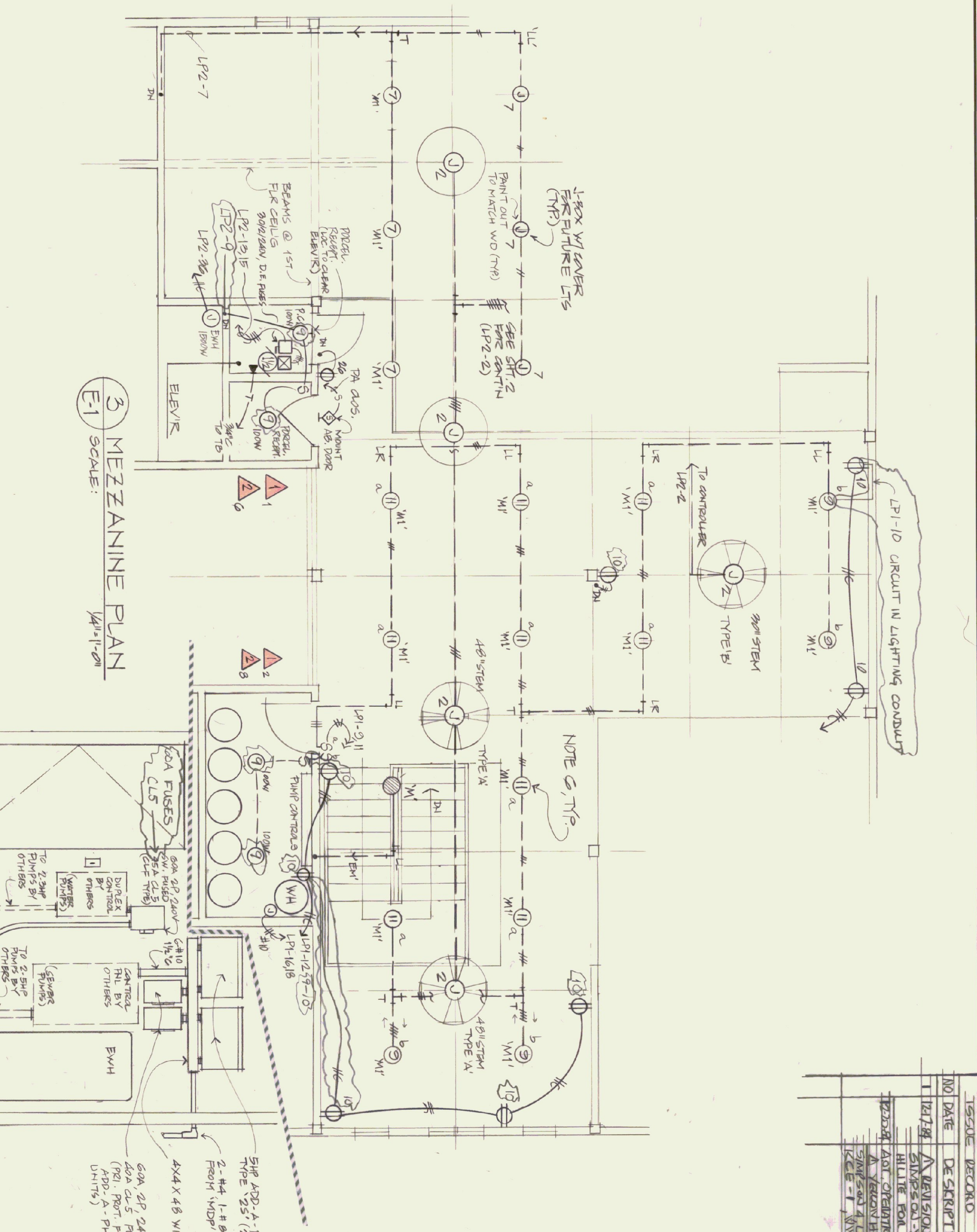
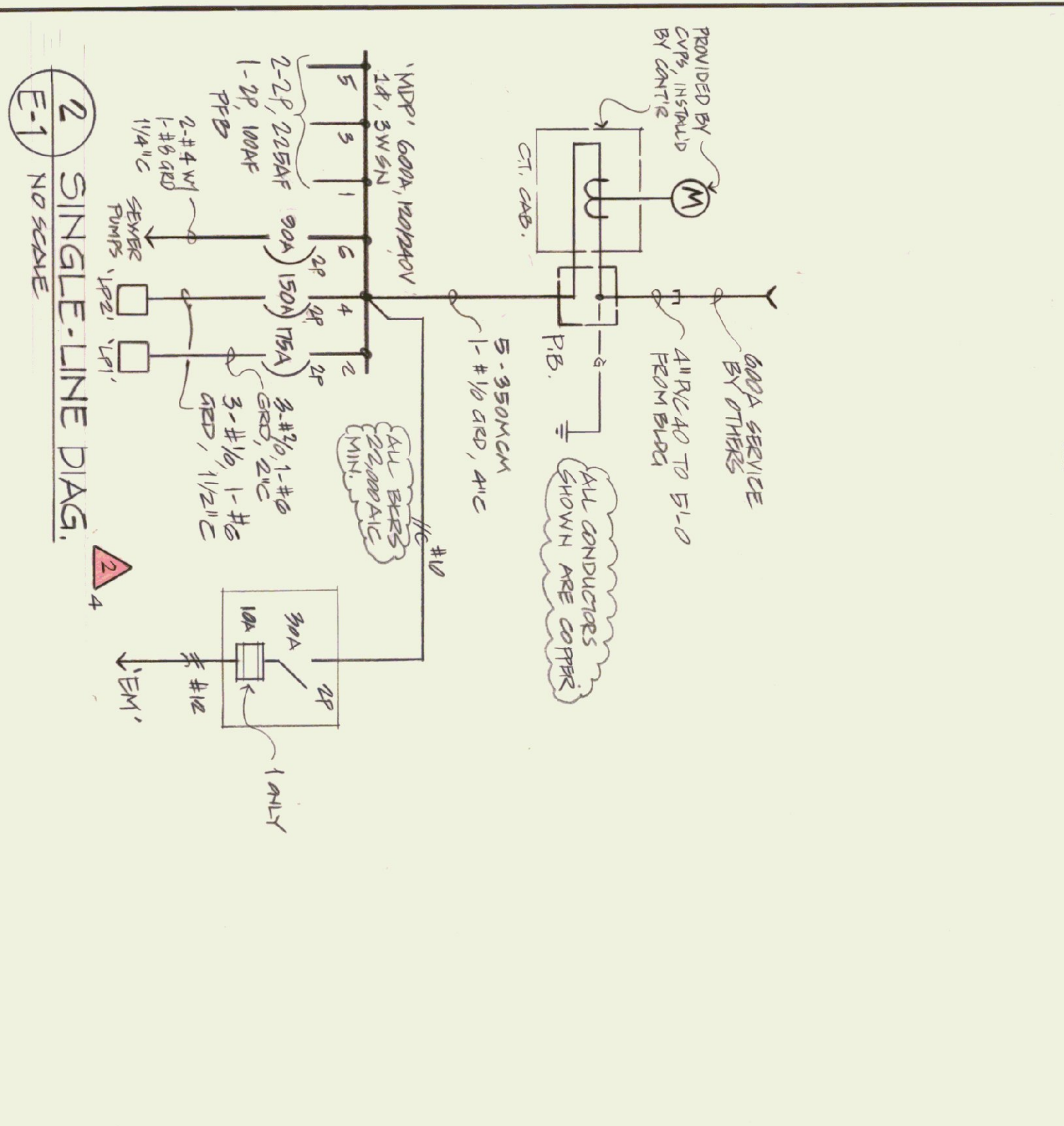


Type	Description	Lamps	Equal to	Lighting
A	FLUORESCENT 2-LAMP W/40-AROUND WITH PRISMATIC ACRYLIC DIFFUSER	2-F40W	LITONIMA SC240	LIGHTING
B	OPEN			
C	SIMILAR TO 'A', 4 LAMPS	4-F40W	LITONIMA SC440	LIGHTING
D	FLUORESCENT 24 X 48 SURFACE WITH 4-F40W	4-F40W	DAY-BRITE DAY-LUMES	LIGHTING
E	SIMILAR TO 'D', 24 X 48, 2-LAMP	2-F40W		
F	SAME AS 'E', BUT WITH 2 SINGLE LAMP BALLASTS	2-F40W		
G	FLUORESCENT OPEN STRIP, 2-LAMP	2-F40W	LITONIMA C140	LIGHTING
H	FLUORESCENT OPEN STRIP, 1-LAMP	1-F40W	LITONIMA C240	LIGHTING
I	WALL MOUNTED SINGLE-LAMP FLUOR. METAL BOX SHIELD, BRONZE FIN.	1-F40W	CH-4281	LIGHTING
J	SIMILAR TO 'I', BUT 8 FT LONG	2-F40W		
K	WALL-MOUNTED SINGLE-LAMP FLUOR. OPEN ACRYLIC W/40-AROUND DIFFR.	1-F40W	PRESCOLITE 3089	LIGHTING
L	5 IN. DIA., BRONZE FIN.	A19 9W	PRESCOLITE 1155-353	LIGHTING
M	SAME AS 'M'	R-30, 75W		
N	INCANDESCENT, 5-IN. CYLINDER BRONZE FIN.	R-30 75W	PRESCOLITE 105-2-910	LIGHTING
O	FLUORESCENT SINGLE-LAMP VANDAL PROOF, POLY CARB LENS	F40W	RENNAL 7140	LIGHTING



NO	DATE	DESCRIPTION	BY
1	11-21-84	DESIGN	W&A
2	12-11-84	REVISED	W&A
3	1-11-85	REVISED	W&A
4	2-11-85	REVISED	W&A
5	3-11-85	REVISED	W&A
6	4-11-85	REVISED	W&A
7	5-11-85	REVISED	W&A
8	6-11-85	REVISED	W&A
9	7-11-85	REVISED	W&A
10	8-11-85	REVISED	W&A
11	9-11-85	REVISED	W&A
12	10-11-85	REVISED	W&A
13	11-11-85	REVISED	W&A
14	12-11-85	REVISED	W&A

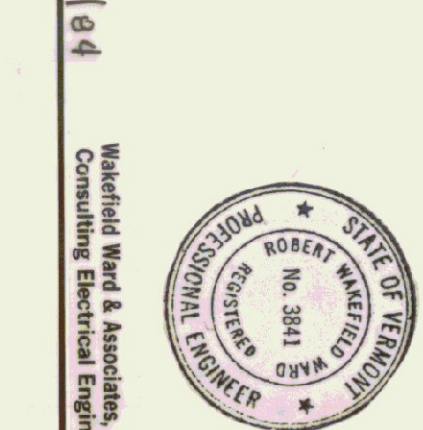
SYMBOL LEGEND

- Single electrical symbol in ceiling or wall, 2 to 13 when in memory unless otherwise noted. Main notes indicate number of wires when more than two.
- Branch circuit on above specified.
- Branch circuit on above specified in floor or ground.
- Branch circuit on above specified.
- Auxiliary circuit (T = telephone, S = sound, A.S.).
- Home run to panelboard or cabinet (No. of wires = No. circuits).
- Fluorescent light fixture, ceiling mounted, with circuit number inside and type designation outside.
- Fluorescent fixture, wall mounted, on above.
- Fluorescent strip fixture, ceiling mounted, on above.
- Fluorescent strip fixture, wall mounted, on above.
- Incandescent fixture, ceiling mounted, on above. FC = Fluor. Conv.
- Incandescent fixture, wall mounted, on above.
- Exit light, ceiling mounted, directional arrow as required.
- Exit light, wall mounted, **TYPE INDICATED**.
- Junction box installed in floor or ceiling.
- Junction box installed in wall.
- Duplex convenience outlet, 20, 30W grounding type, 1/2" W x 1/2" D.
- Duplex convenience outlet, 20, 30W grounding type, 1/2" W x 1/2" D.
- Duplex outlet on above **TYPE INDICATED**.
- Convenience outlet installed in floor.
- Special purpose outlet, rating as noted.
- Clock outlet.
- Telephone outlet.
- Telephone outlet installed in floor.
- Wall switch, single-pole (P = pilot light), +48V, 1/2" D x 1/2" H.
- Wall switch, double-pole.
- Wall switch, three-way (4 = 4-way).
- Dimmer, rating as noted.
- Panelboard, power.
- Panelboard or load center, lighting.
- Telephone cabinet.
- Electric meter with HP noted.
- Functional HP note less than 1/8" HP.
- Safety switch, HP noted, non-removable unless otherwise noted.
- Magnetic motor starter, across-the-line unless otherwise noted.
- Manual motor starter.
- Dry-type transformer, rating as noted.
- Fire alarm pull station.
- Fire alarm bell with bell diameter noted.
- Fire alarm annunciator panel.
- Fire alarm control cabinet.
- Fire alarm control cabinet.
- Fire alarm detector, temperature type.
- Fire alarm detector, smoke type.
- Signal outlet installed in ceiling (I = intercom, S = speaker, TV = television, M = microphone, PA = public address, V = volume control).
- Signal outlet installed in floor.
- Ball.
- Buzzer.
- Push button.
- TRIP SWITCH, PROVIDED BY MECH.
- CELLS FAN, CONTRACTOR PROVIDED.
- TYPE 'A' 52", HUNTER 22272/22280.
- TYPE 'B' 38", HUNTER 22270/22280.
- COMPLETE W/ VARIABLE SPEED CONTROL.
- REF. MECH. DWGS FOR HVAC CONTROL WIRING.

STATE OF VERMONT
DIVISION OF STATE BUILDINGS
 AGENCY OF ADMINISTRATION
 MONTPELIER, VERMONT

RUTLAND TERMINAL BUILDING AIR 23-2024
MEZZ. ELEC. PLAN & DETS.
 RUTLAND STATE AIRPORT
 CLARENDON, VERMONT

DATE: JUNE 21, 1984
 SCALE: AS SHOWN
 APPROVED BY: [Signature]
 DRAWN BY: [Signature]
 DWG. NO.: E-1
 14 OF 20



Waterfield Ward & Associates, Ltd.
 Consulting Electrical Engineers
 9101 84