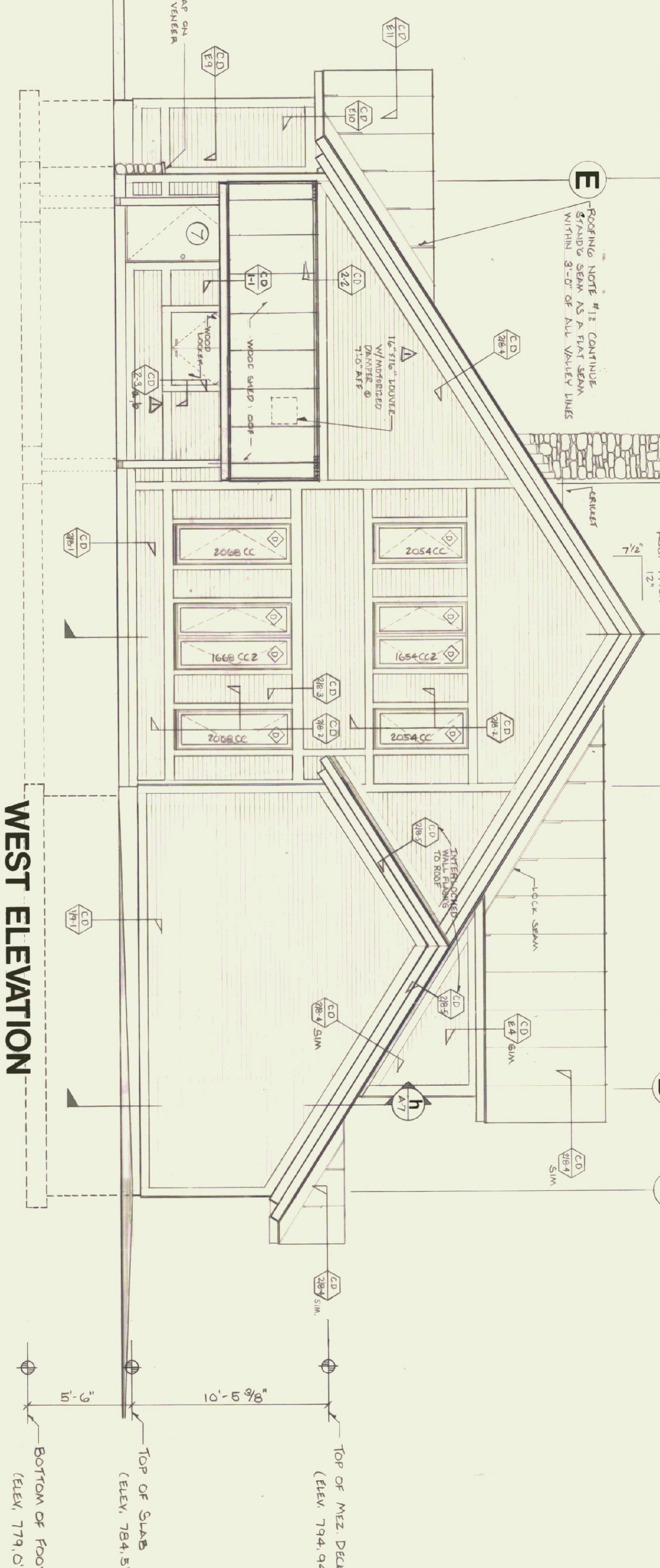
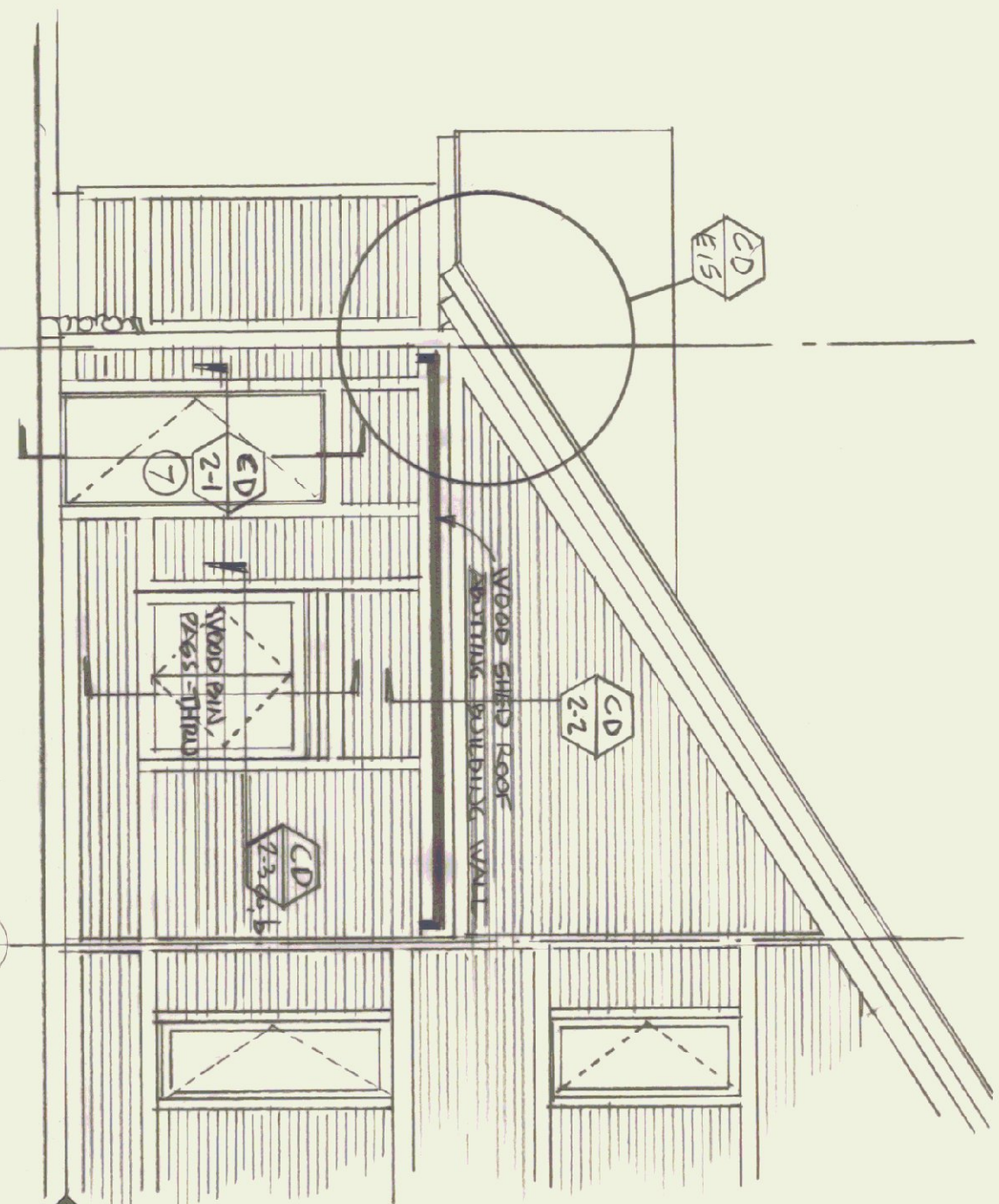
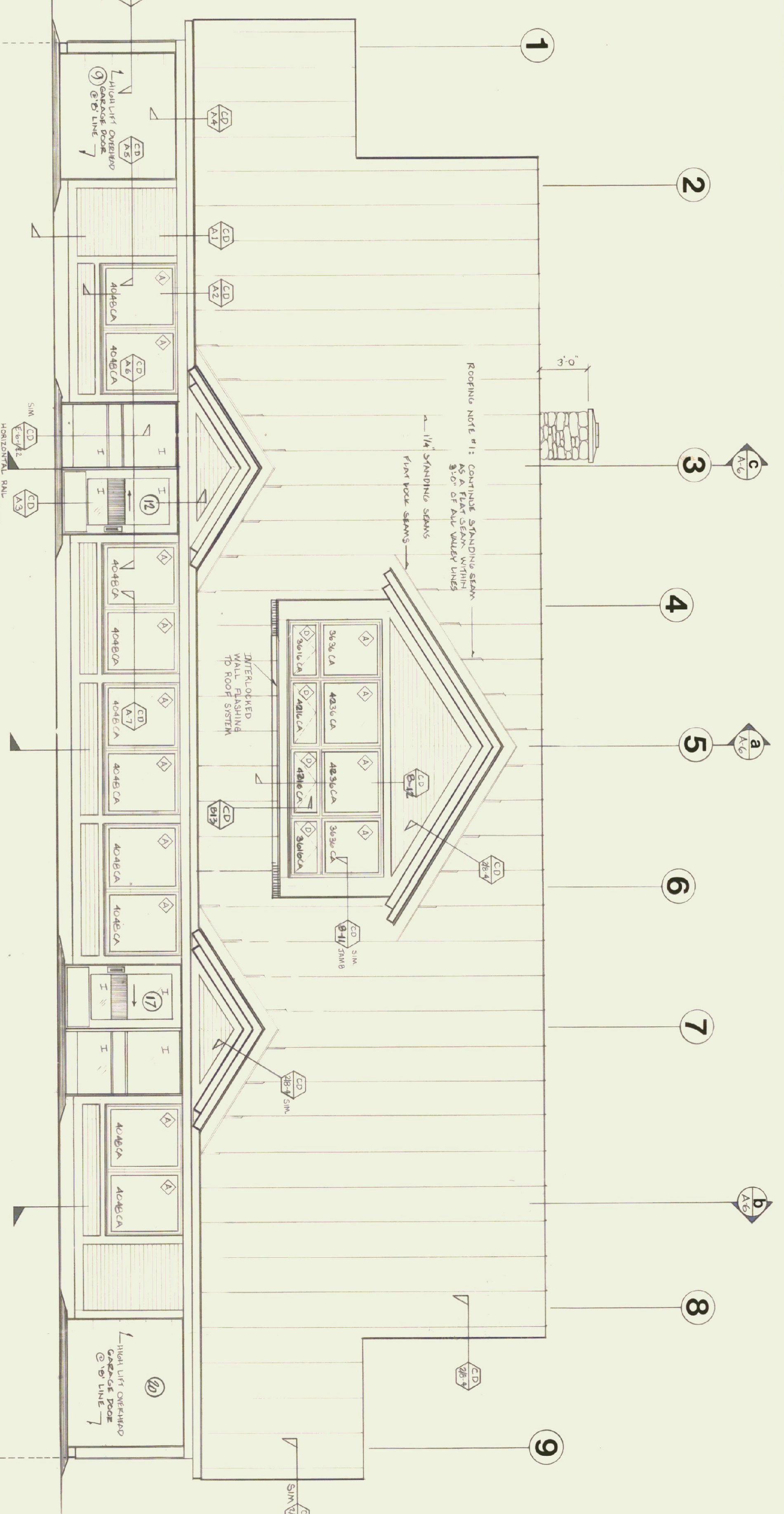


**PART WEST ELEVATION
WOOD SHED**



SOUTH ELEVATION



NOTE
SEE DWG. A7 FOR WINDOW UNITS CORRIDOR-SECTION (B)
AT INTERIOR WALL OF AIR SIDE

NO	DATE	DESCRIPTION	BY
1	12/1/24	REVISIONS FOR CONSTRUCTION	SA
2	12/30/24	NOT OPERATIONS - 1	SA
3	1/1/25	ADDITIONAL CHANGES	SA
4	1/1/25	REVISIONS FOR CONSTRUCTION	SA
5	1/1/25	REVISIONS FOR CONSTRUCTION	SA
6	1/1/25	REVISIONS FOR CONSTRUCTION	SA
7	1/1/25	REVISIONS FOR CONSTRUCTION	SA

WEST ELEVATION

TOP OF MEZ. DECK'G (ELEV. 794.94')
TOP OF SLAB (ELEV. 784.5')
BOTTOM OF FOOT'G (ELEV. 779.0')

STATE OF VERMONT
DIVISION OF STATE BUILDINGS
AGENCY OF ADMINISTRATION
MONTPELIER, VERMONT

RUTLAND TERMINAL BUILDING AIR 23-2024
ELEVATIONS
RUTLAND STATE AIRPORT
CLARENDON, VERMONT

DATE	SCALE	REVISIONS	DWG. NO.
0-8-24	1/4" = 1'-0"	48/188 SA MILLER	A-5
DRAWN BY: JPO	APPROVED BY: RJA	NO. 30-24	8 OF 20

8/10/24