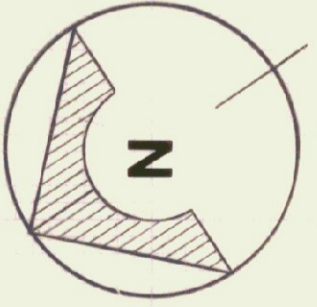
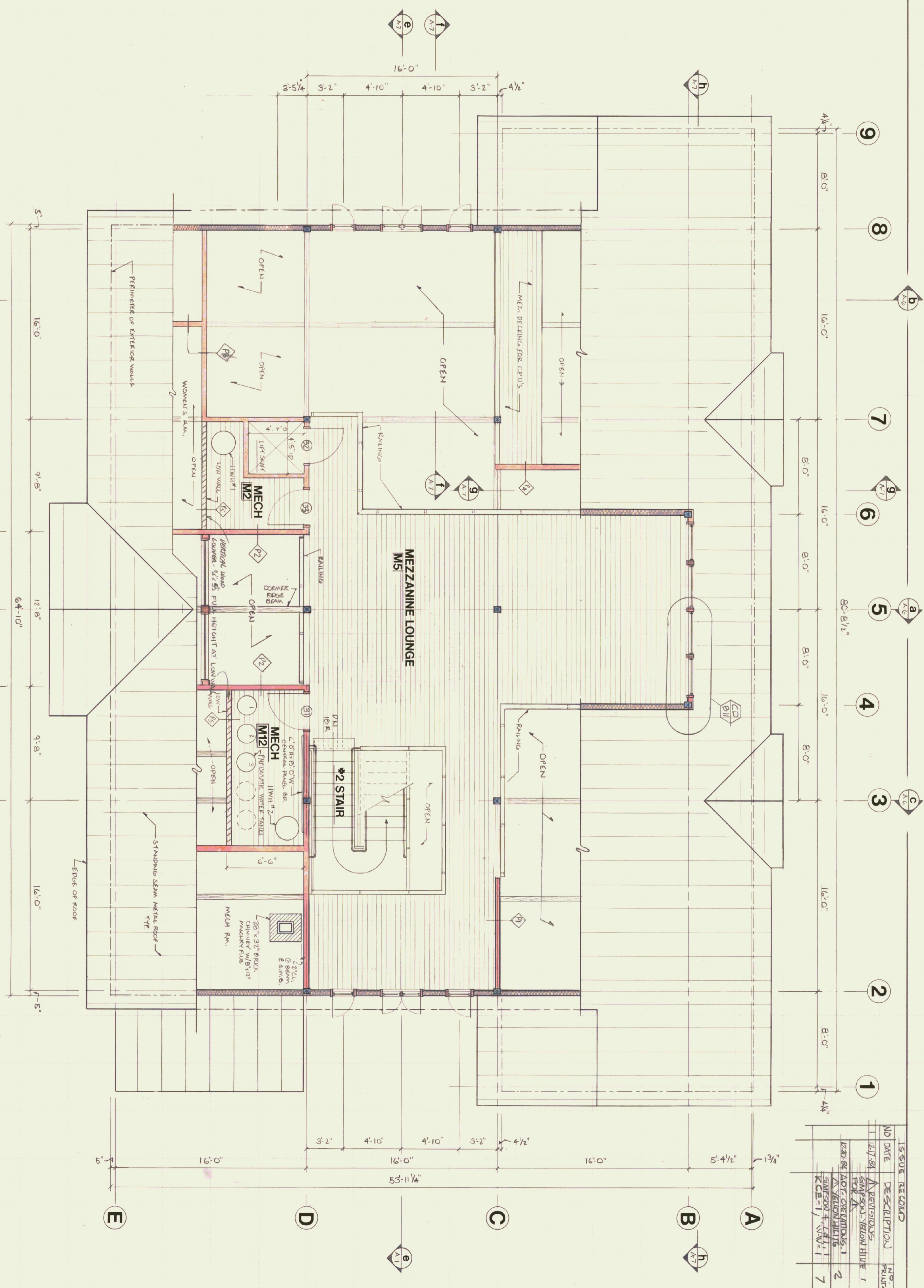


NO.	DATE	DESCRIPTION	REVISED
1	12/7/24	REVISIONS AIRPORT BELOW HURVE FOR A	1
2	1/23/25	REVISED MEZZANINE PLAN	2
7	1/23/25	REVISED MEZZANINE PLAN	7



STATE OF VERMONT  
 DIVISION OF STATE BUILDINGS  
 AGENCY OF ADMINISTRATION  
 MONTPELIER, VERMONT

**RUTLAND TERMINAL BUILDING AIR 23-2024**  
**MEZZANINE PLAN**  
 RUTLAND STATE AIRPORT  
 CLARENDON, VERMONT

DATE: 0-8-24  
 SCALE: 1/4" = 1'-0"  
 DRAWN BY: 02/18 SAMUELHERN  
 APPROVED BY: 01/03-0-24  
 STG

REVISIONS:  
 02/18 SAMUELHERN  
 10-30-24

DWG. NO. A-3  
 6 OF 20

01/01/24