

SECOND FLOOR PLAN

SCALE: 1/4" = 1'-0"

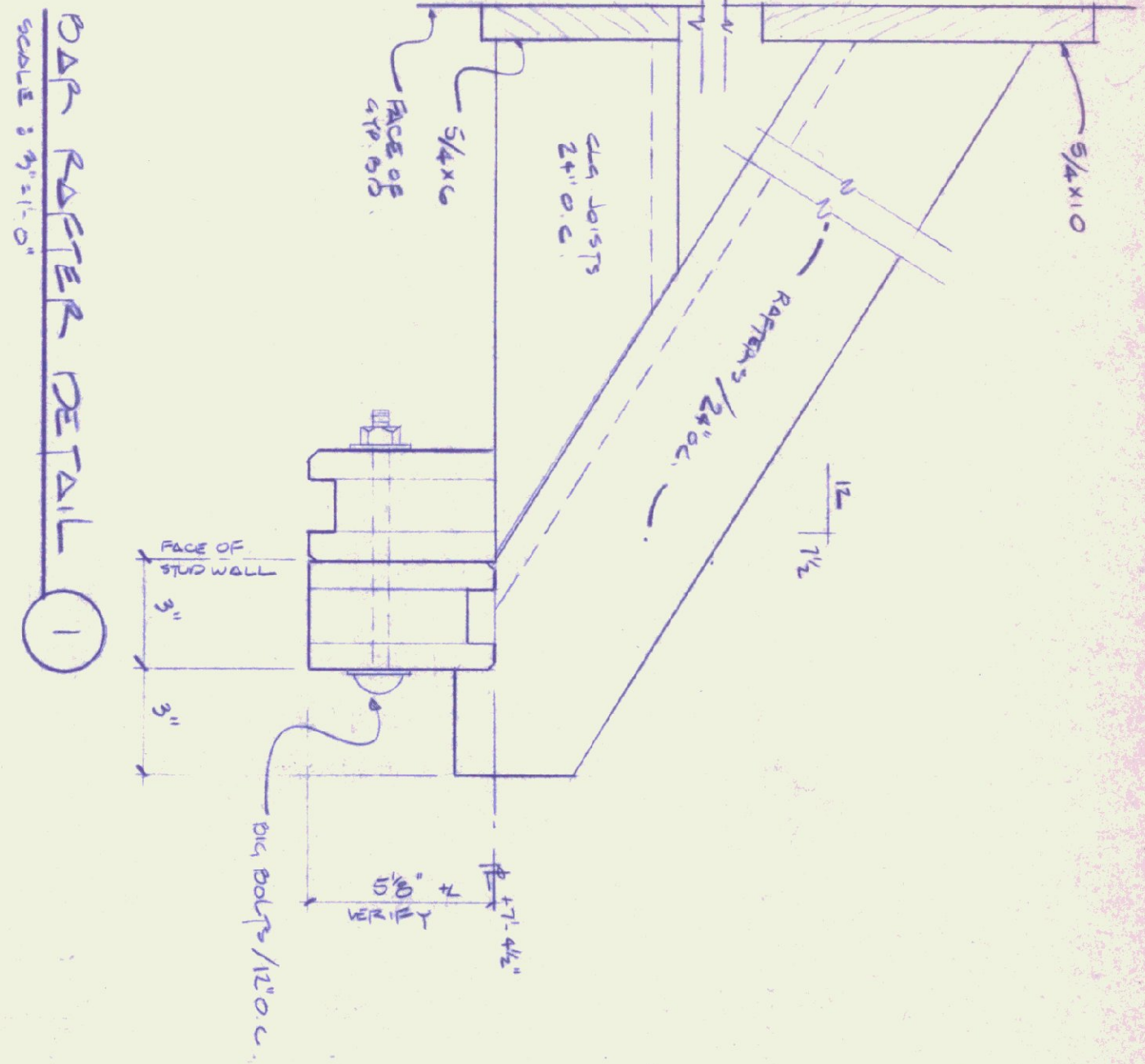
DRG GRAY

A-1

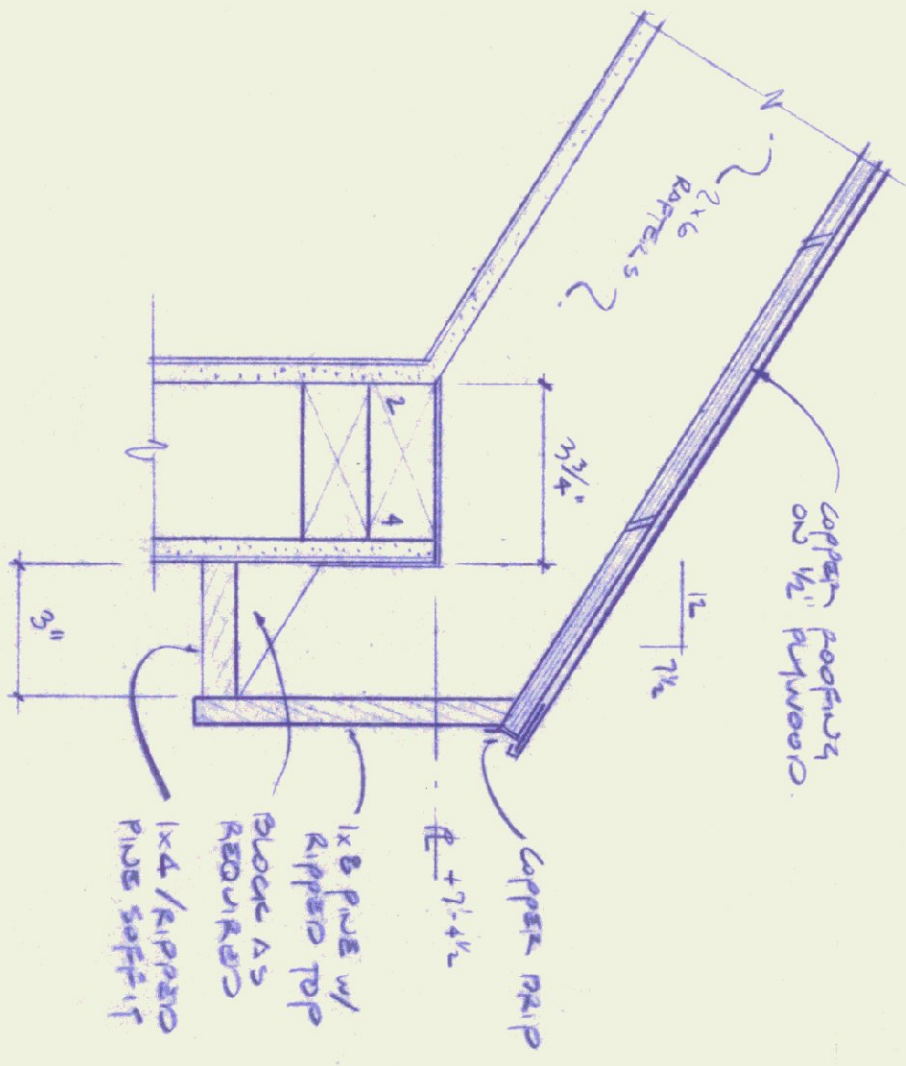
PROPOSED ALTERATIONS TO PASSENGER TERMINAL BUILDING @ THE RUTLAND AIRPORT
 POP: AMELIA'S CANTEEN
 AIRPORT ROAD
 SHREWSBURY, VERMONT

Mark R. McManus
ARCHITECT
 Box 1204
 Middletown Springs, VT 05757
 (802)235-2518

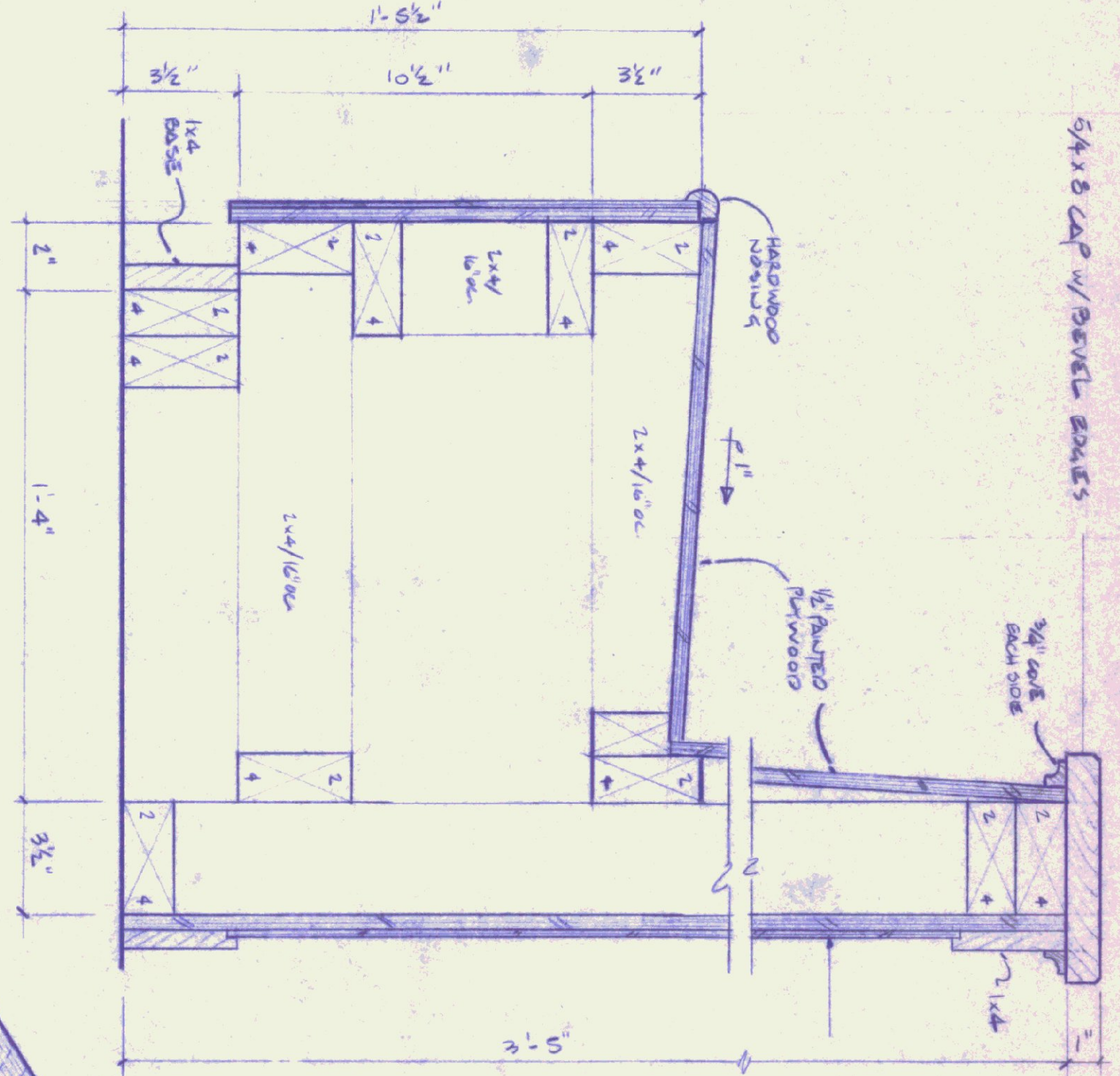
DATE REVISIONS
 1 & 2's / ISSUED FOR PERMIT WORK
 3 & 4's / ADDED BAR DETAIL #1



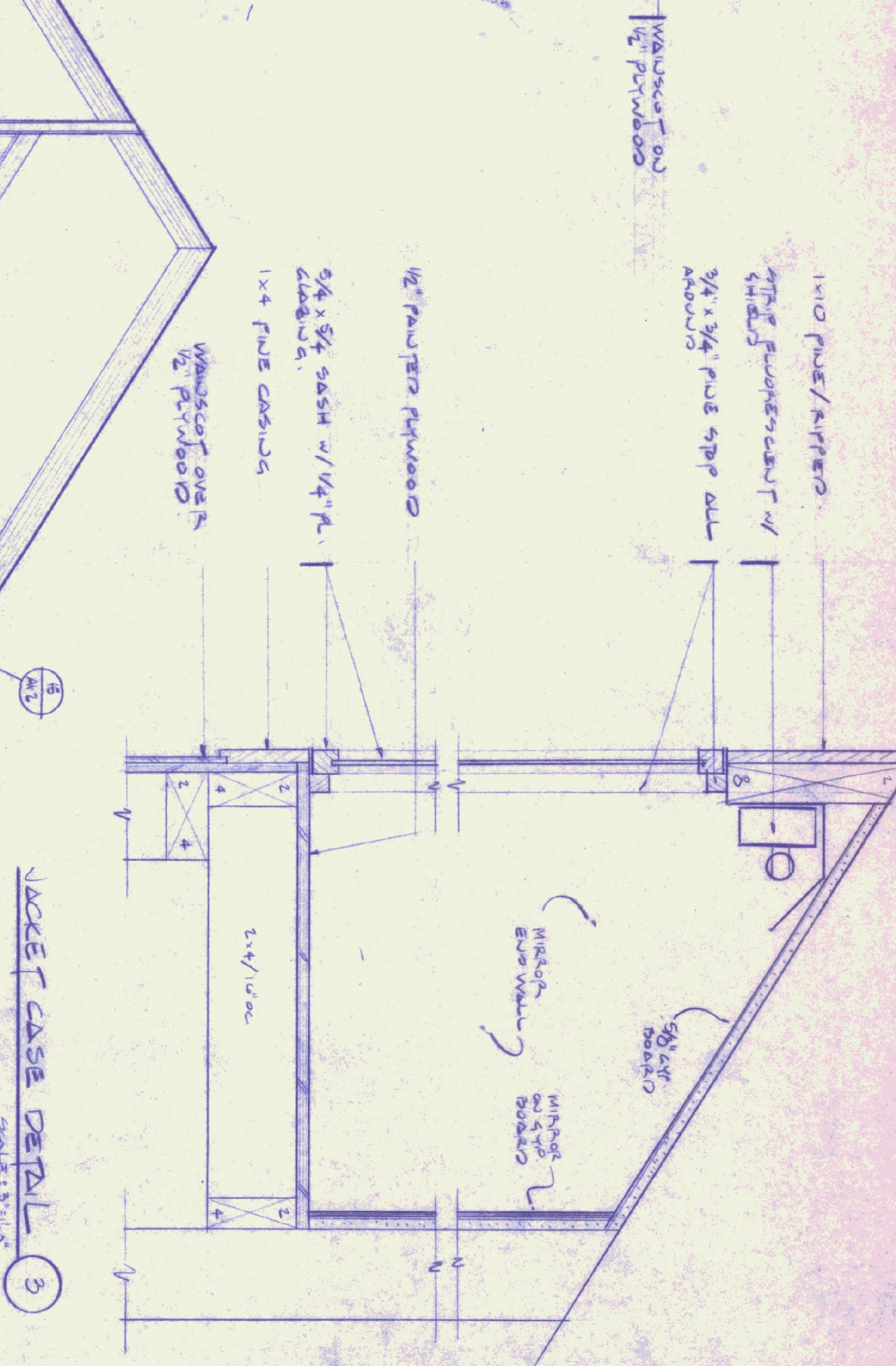
DAN RAFTER DETAIL 1
SCALE: 3/4" = 1'-0"



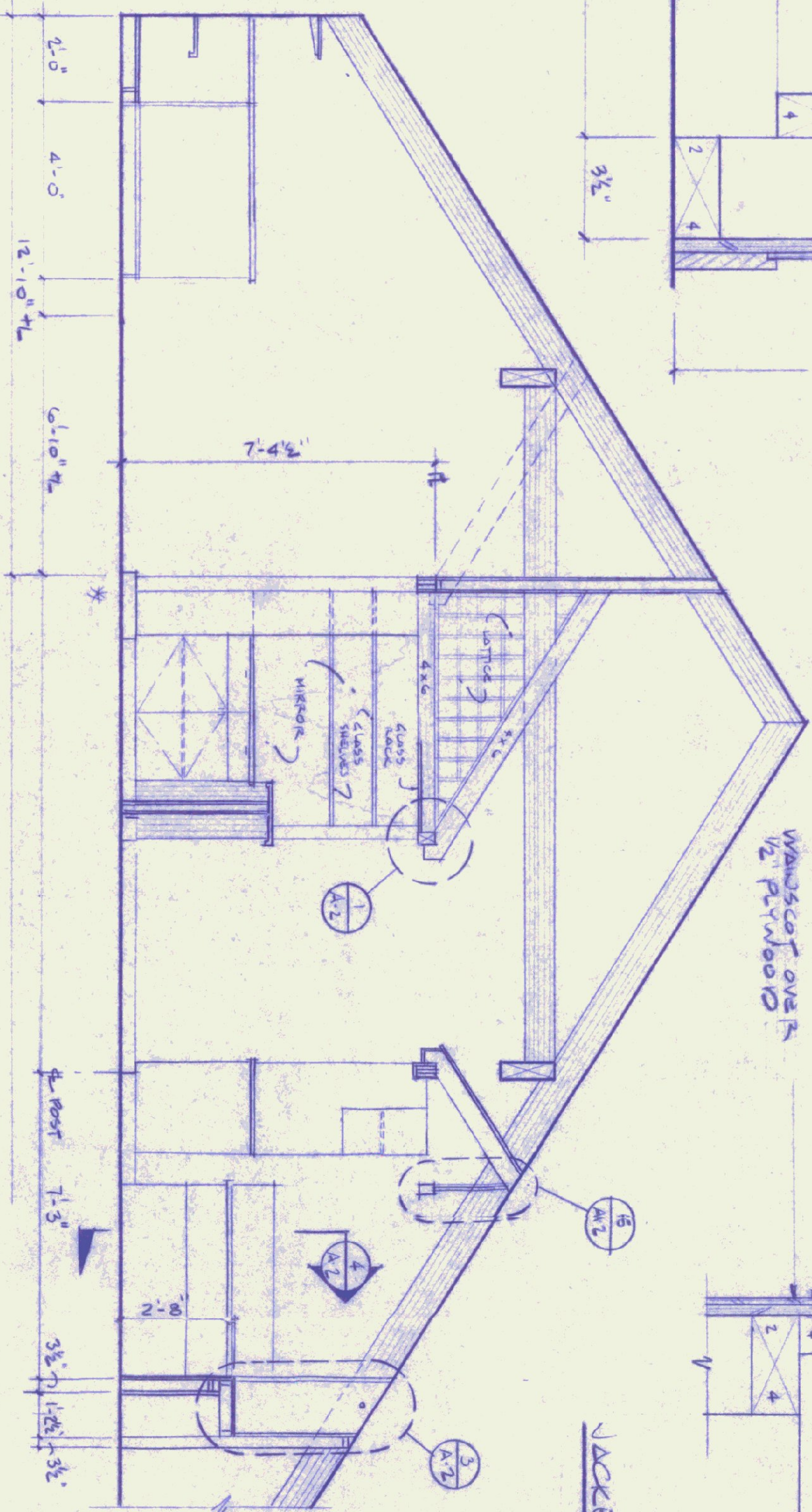
RAFTER DETAIL 2
SCALE: 3/4" = 1'-0"



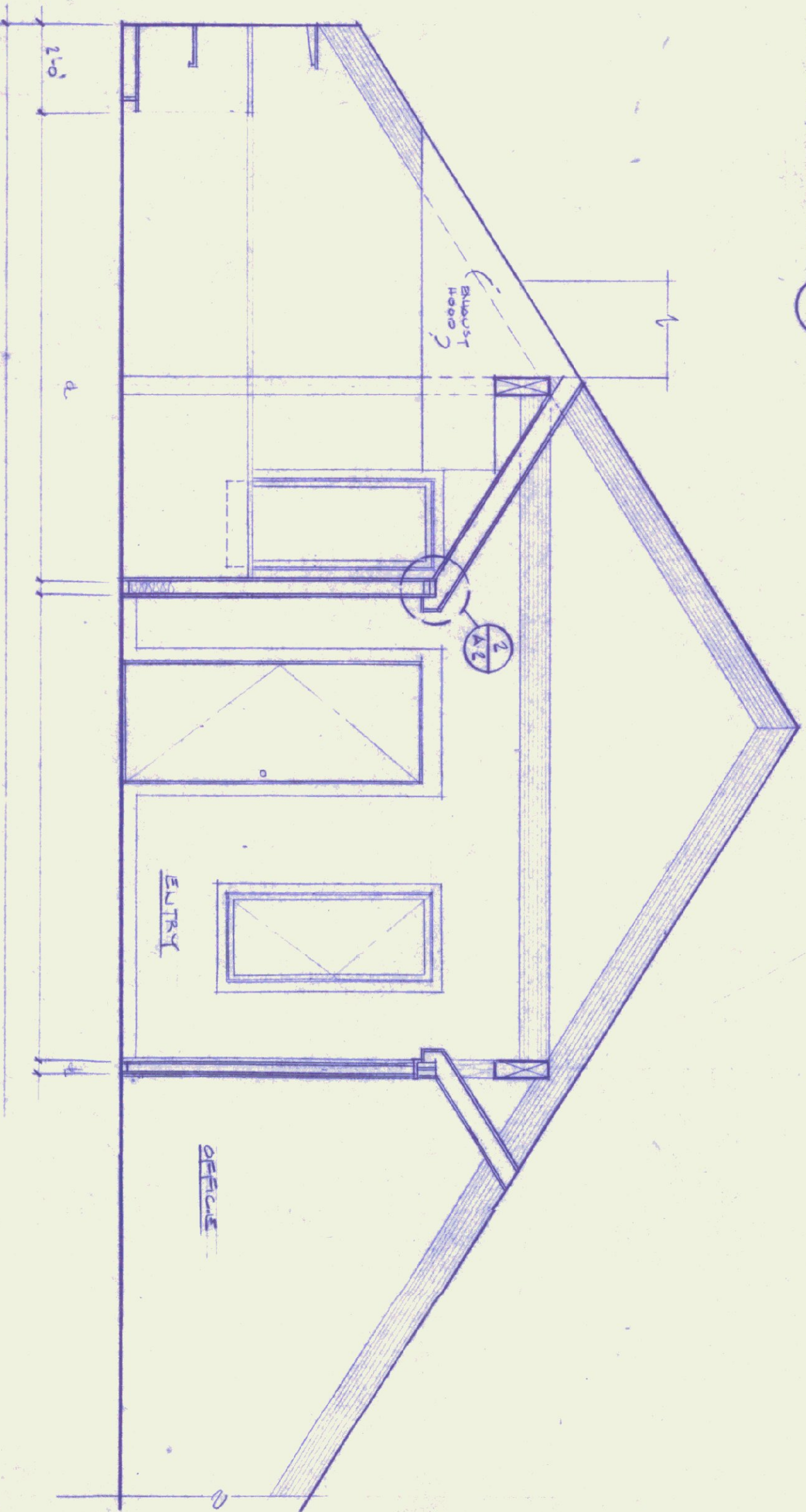
BOOTH/BENCH DET. 4
SCALE: 3/4" = 1'-0"



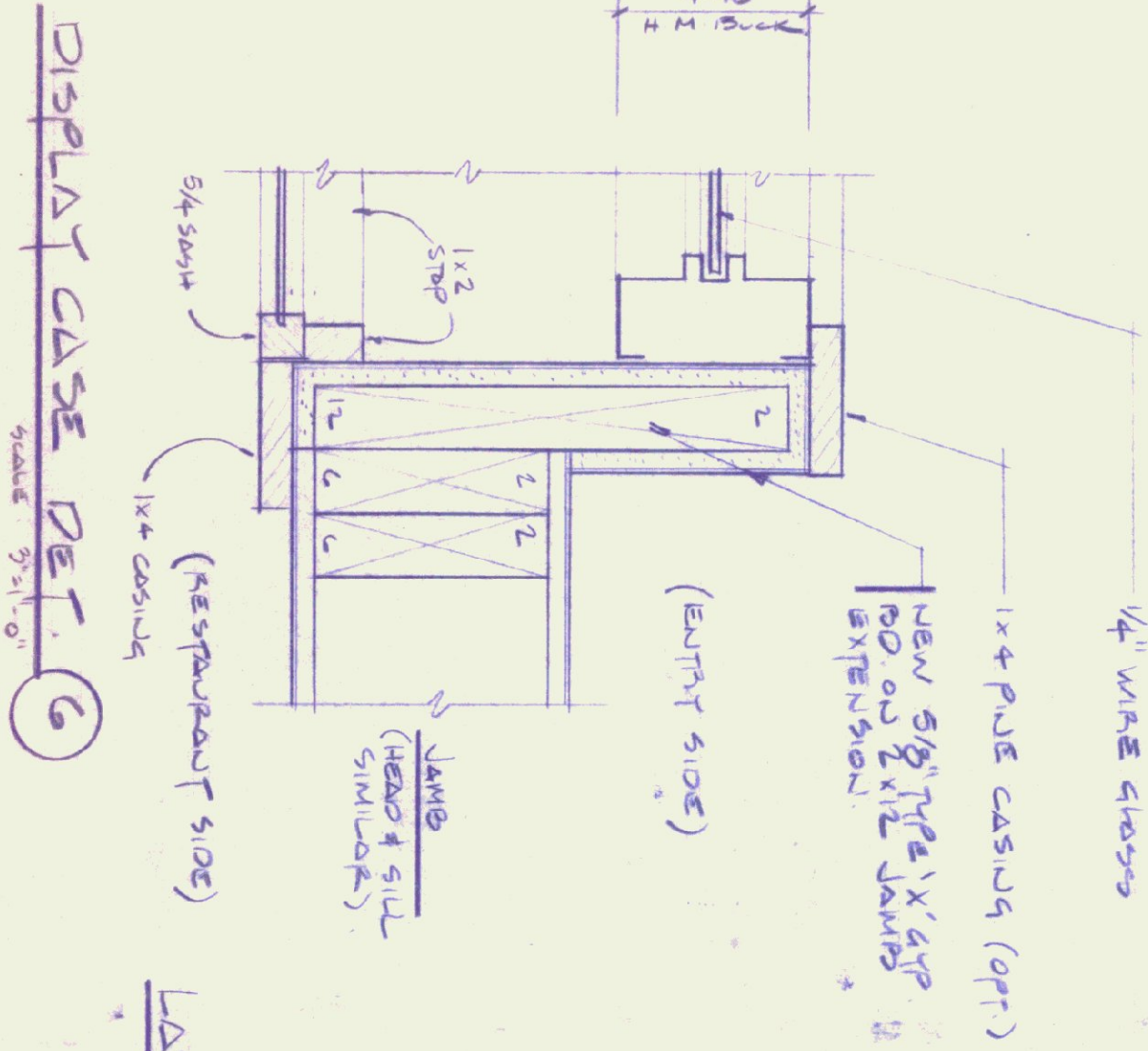
VACUET CASE DETAIL 3
SCALE: 3/4" = 1'-0"



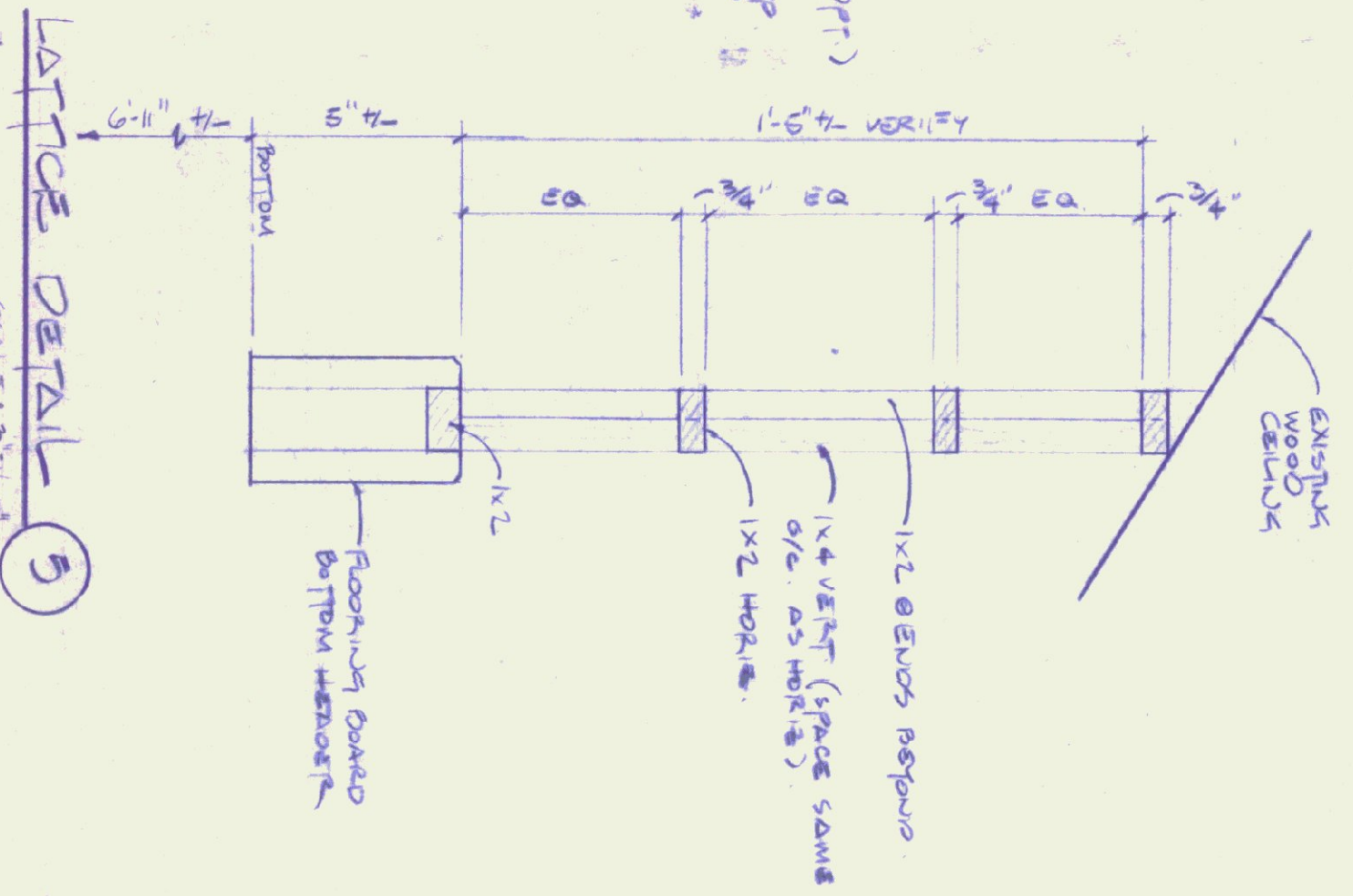
SECTION B



SECTION A
SCALE: 3/8" = 1'-0"



DISPLAY CASE DET. 6
SCALE: 3/4" = 1'-0"



LATTICE DETAIL 5
SCALE: 3/4" = 1'-0"

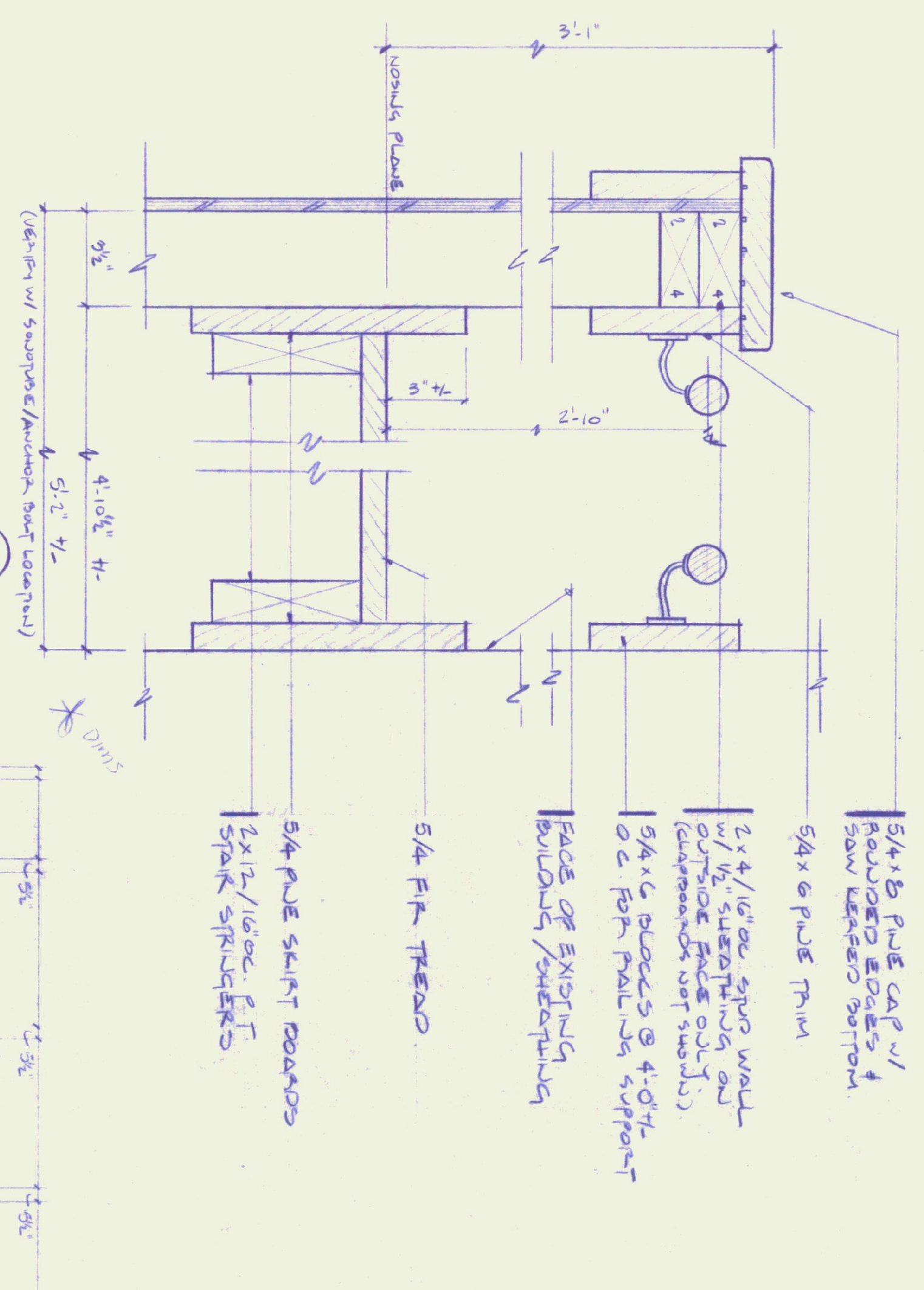
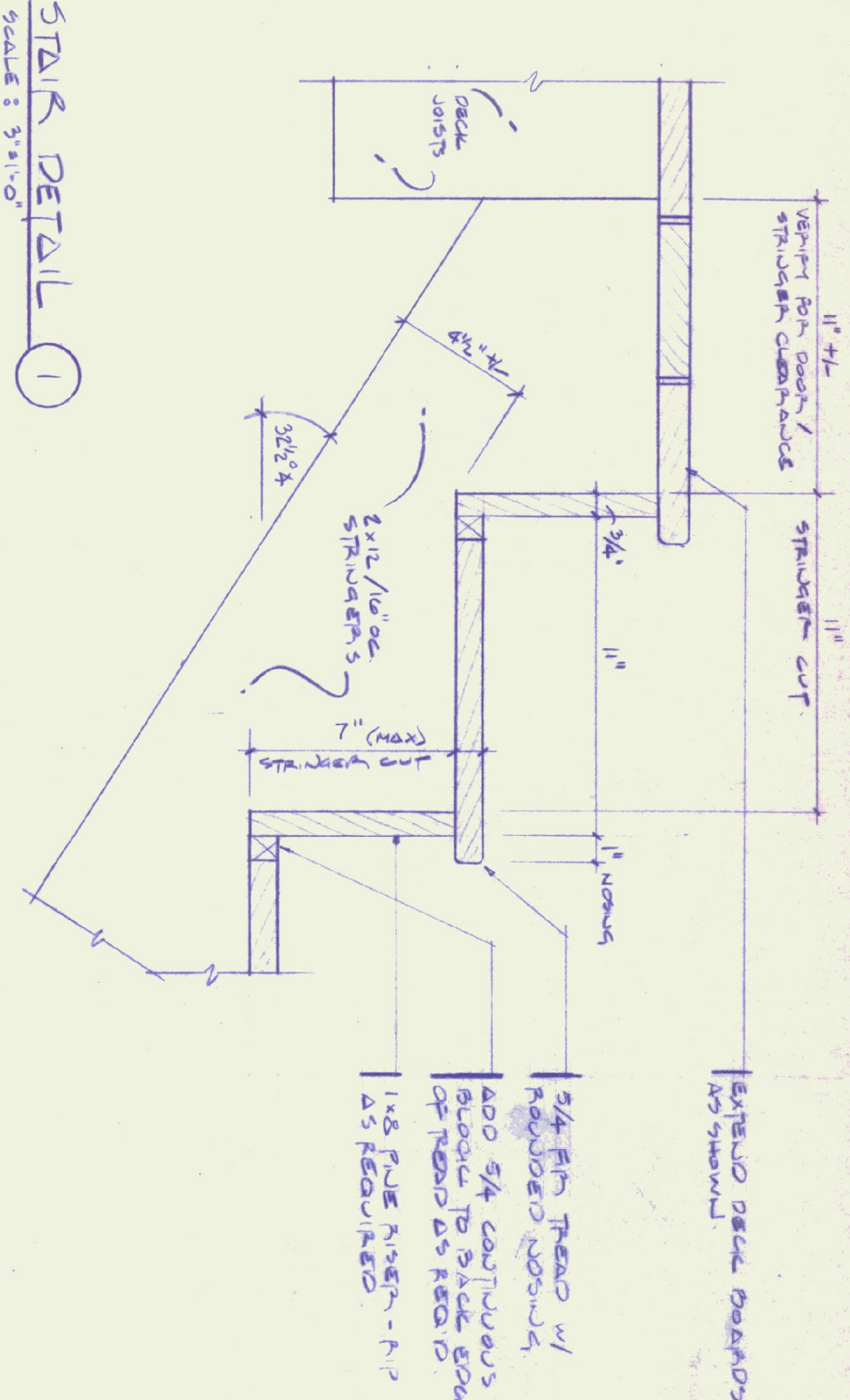
DATE / REVISIONS
1-4-95 / 1/4" WOOD PAINT REVISION WORK
2-18-95 / 1/4" WOOD PAINT DETAILS 1x2
3-2-93 / 1/4" WOOD PAINT 3/4, 5, 16

Mark R. McManus
ARCHITECT
Box 1204
Middletown Springs, VT 05757
(802)235-2518

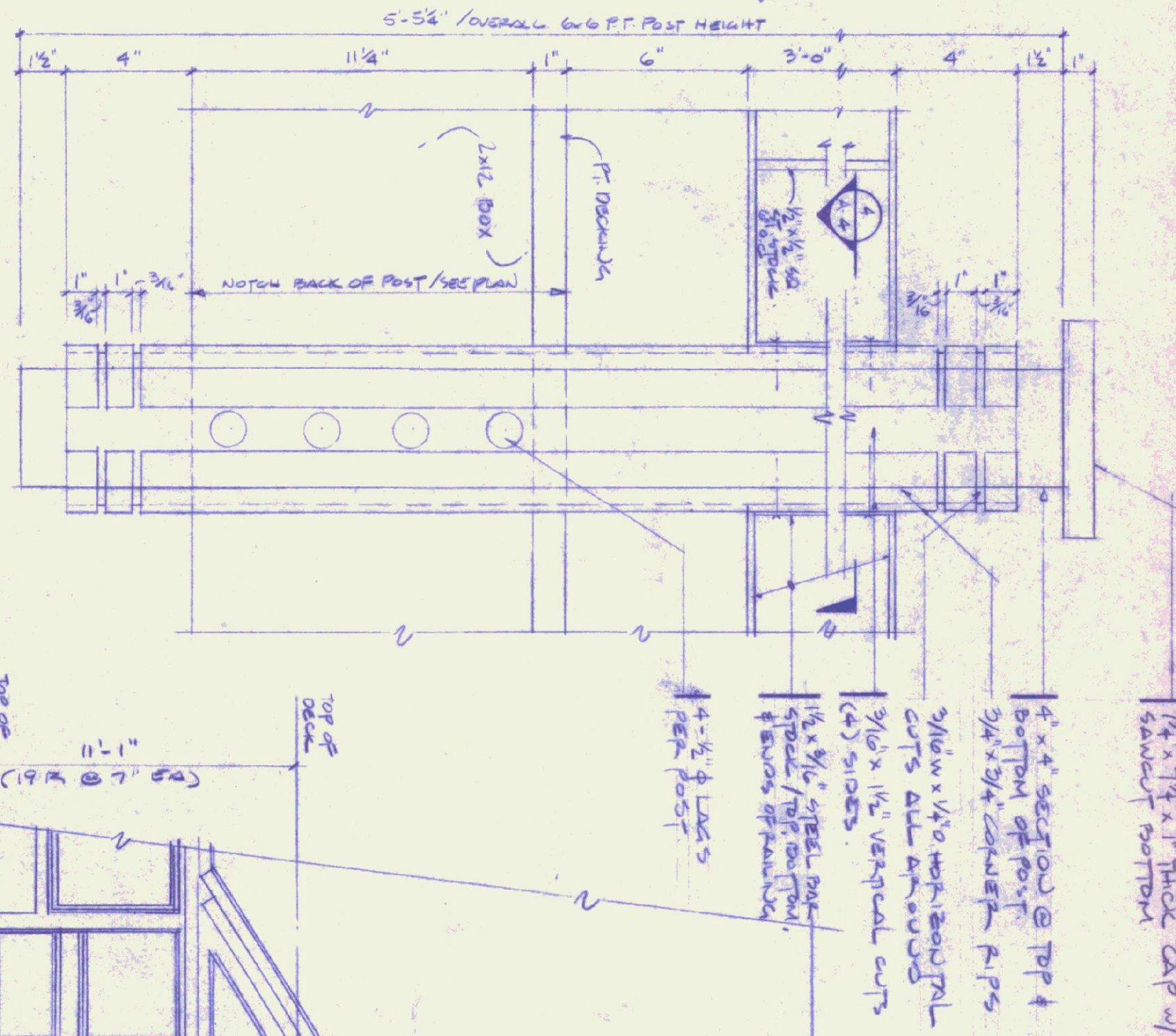
PROPOSED ALTERATIONS TO PASSENGER TERMINAL BUILDING @ THE RUTLAND AIRPORT
FOR:
AMELIA'S CANTINE
AIRPORT BOARD
CLARENDON, VERMONT

DRAWING NO. **A-2**

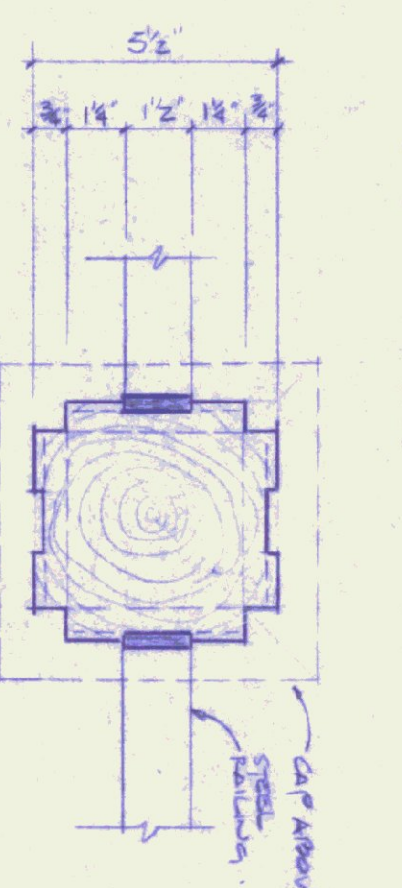
STAIR DETAIL 1
SCALE: 3/8"=1'-0"



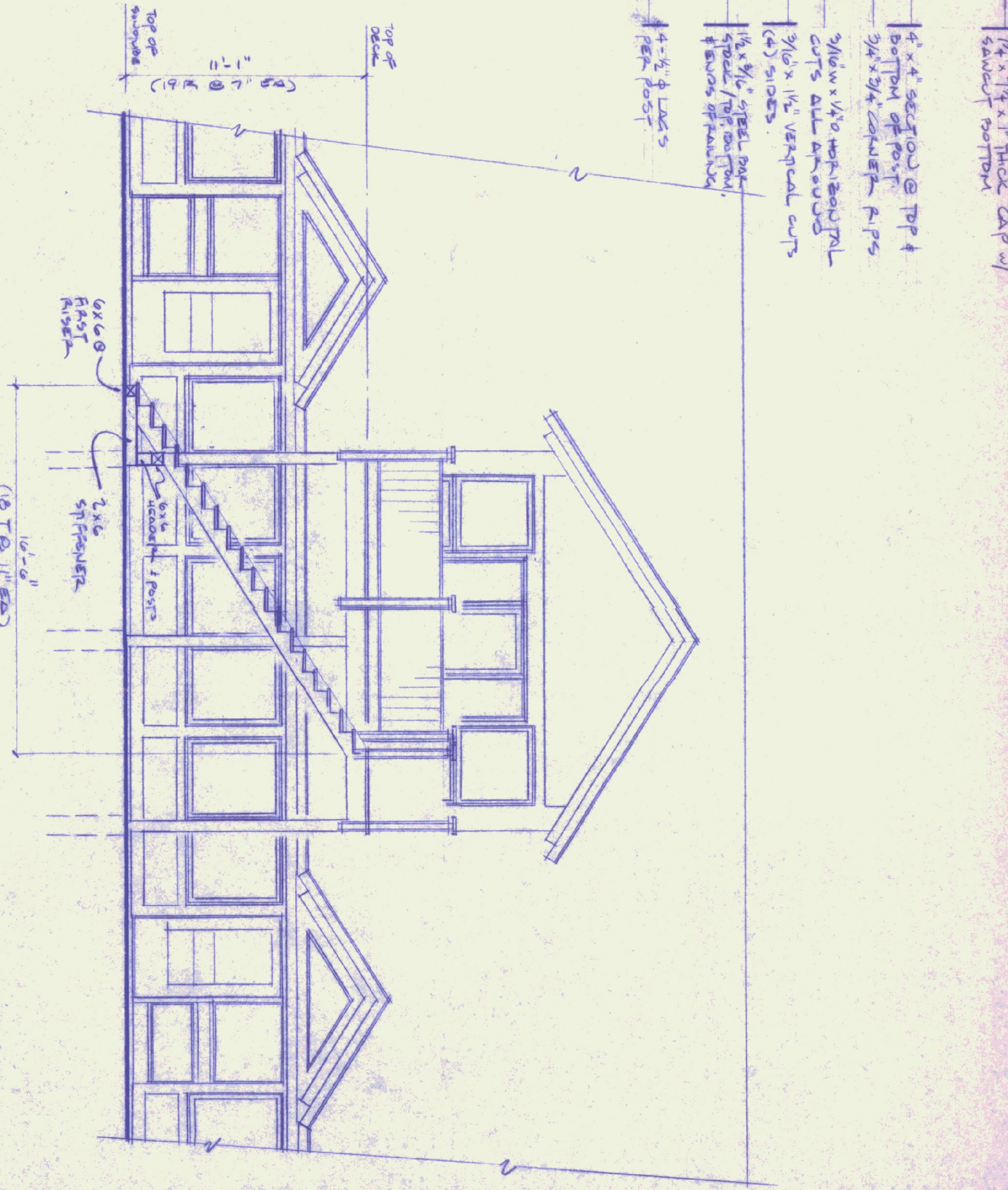
STAIR DETAIL 2
SCALE: 3/8"=1'-0"



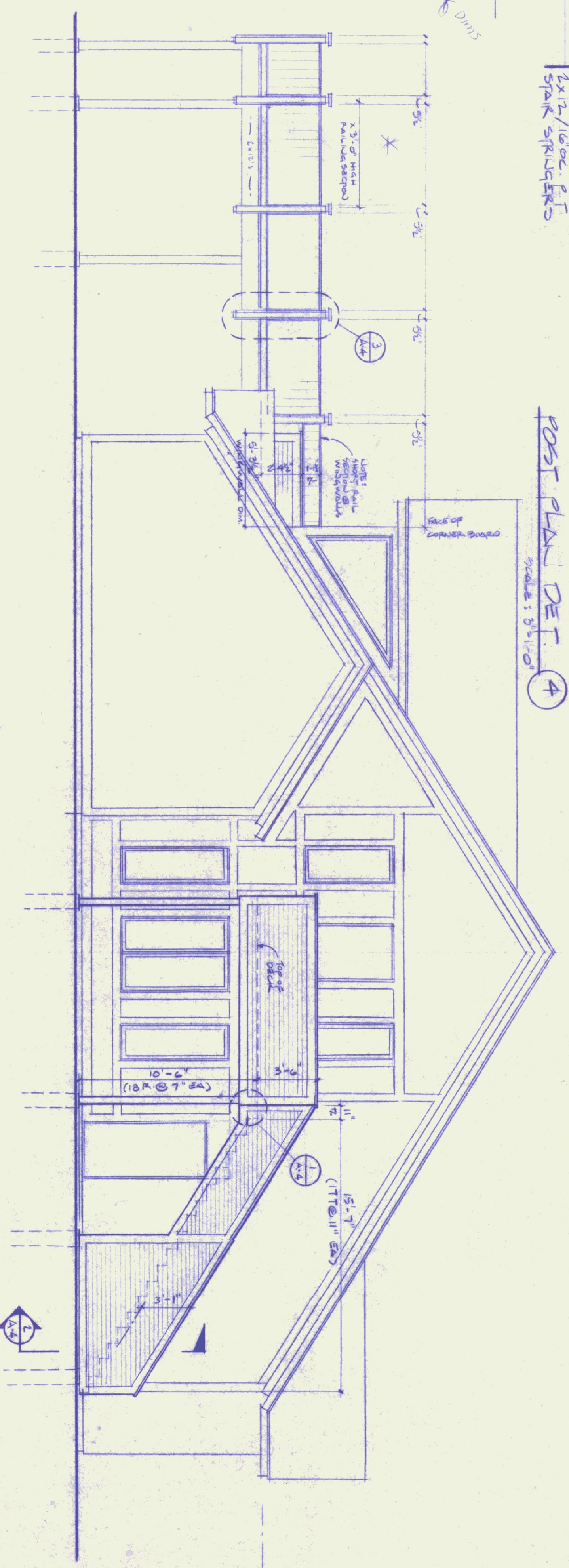
DECK POST DETAIL 3
SCALE: 3/8"=1'-0"



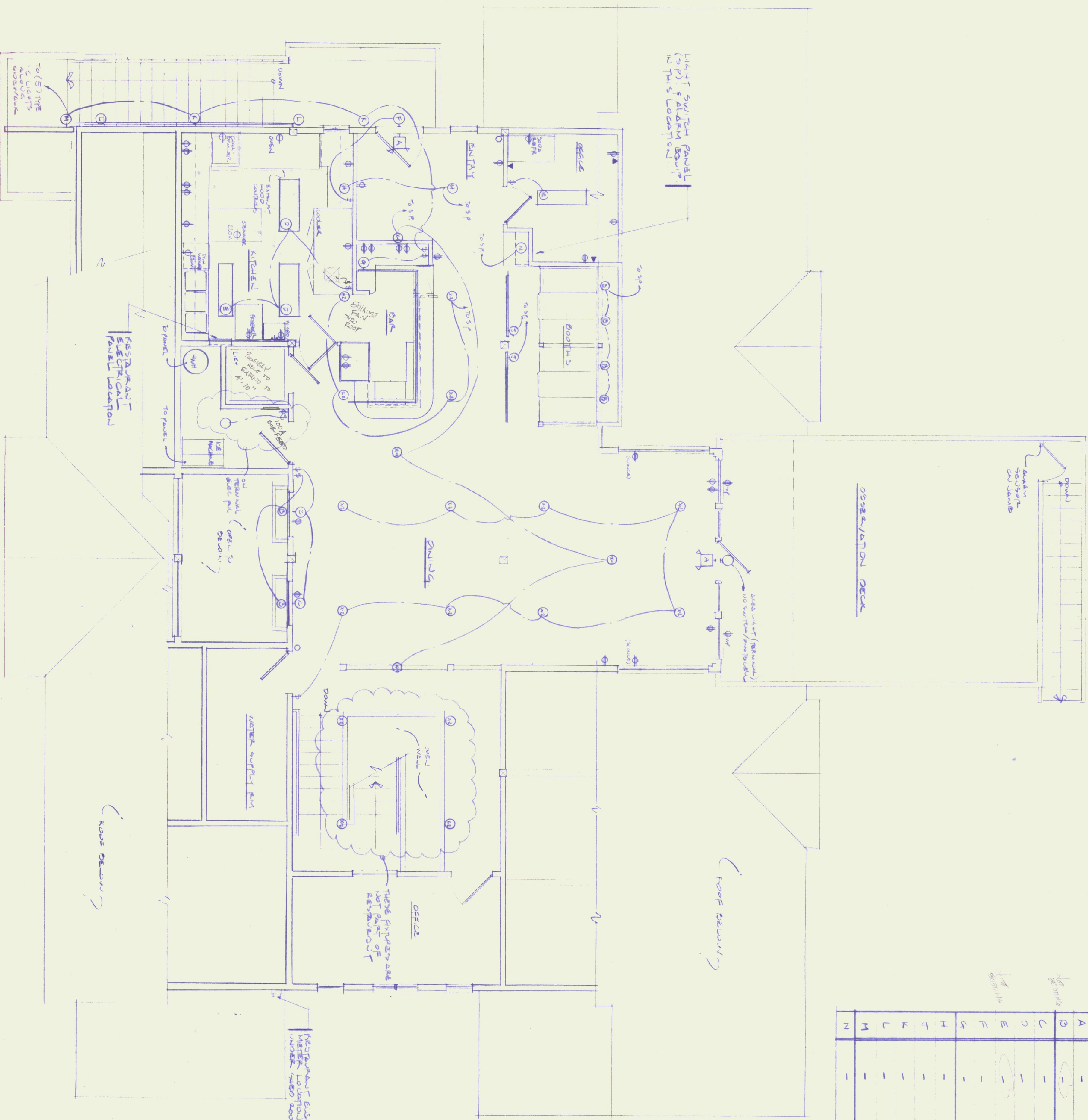
POST PLAN DET. 4
SCALE: 3/8"=1'-0"



BASAL SOUTH ELEVATION
SCALE: 1/4"=1'-0"



EAST ELEVATION



LIGHTING SCHEDULE			
SYM	MANUFACTURER	MODEL NO.	DESCRIPTION
X-1	EXISTING	-	ceiling fan
X-2	EXISTING	-	ceiling fan
A	-	-	EXIT SIGN/LIGHT/EMERGENCY LIGHT
B	-	-	2 FT LONG FLUORESCENT CANISTER LIGHT / SURFACE MTO.
C	-	-	4 FOOT FLUORESCENT LIGHT / WALL SURFACE MOUNTED
D	-	-	4 FT LONG SURFACE MOUNTED FLUORESCENT
E	-	-	4 FT LONG SURFACE MOUNTED FLUORESCENT
F	-	-	2 FT LONG SURFACE MOUNTED FLUORESCENT
G	-	-	EXHAUST FAN
H	-	-	TRACK LIGHTS OVER BATH COUL TERM.
I	-	-	TWO HEAD SPOT LIGHTS / REQUIRES EXISTING CANS.
J	-	-	+ FT TRACK LIGHT
K	-	-	EXTERIOR/FLUORESCENT LIGHT / SURFACE - WALL MTO.
L	-	-	EMERGENCY LIGHT
M	-	-	4 FT / 2 FT LONG FLUORESCENT LIGHT UNDER AWNING
N	-	-	RECESSED FLUORESCENT DOWNLIGHT

SYMBOL LEGEND	
⊕	OUTLET RECEPTACLE / SWITCH ABOVE FLOOR VARIETY
⊙	WIREWAY/FLUORESCENT RECEPTACLE
⊚	WALL MOUNTED SWITCH
⊕	APPLIANCE HOOD-UP
⊙	TELEPHONE JACK
○	NORMAL SWITCH / ALARM STATION

NOTE:
 REFER TO ORIGINAL "AS-BUILT" DRAWING, SHEET E-1 / RUTLAND TERMINAL BUILDING/AIR 25-2024, FOR ADDITIONAL INFORMATION

"AS-BUILT ELECTRICAL" SECOND FLOOR PLAN

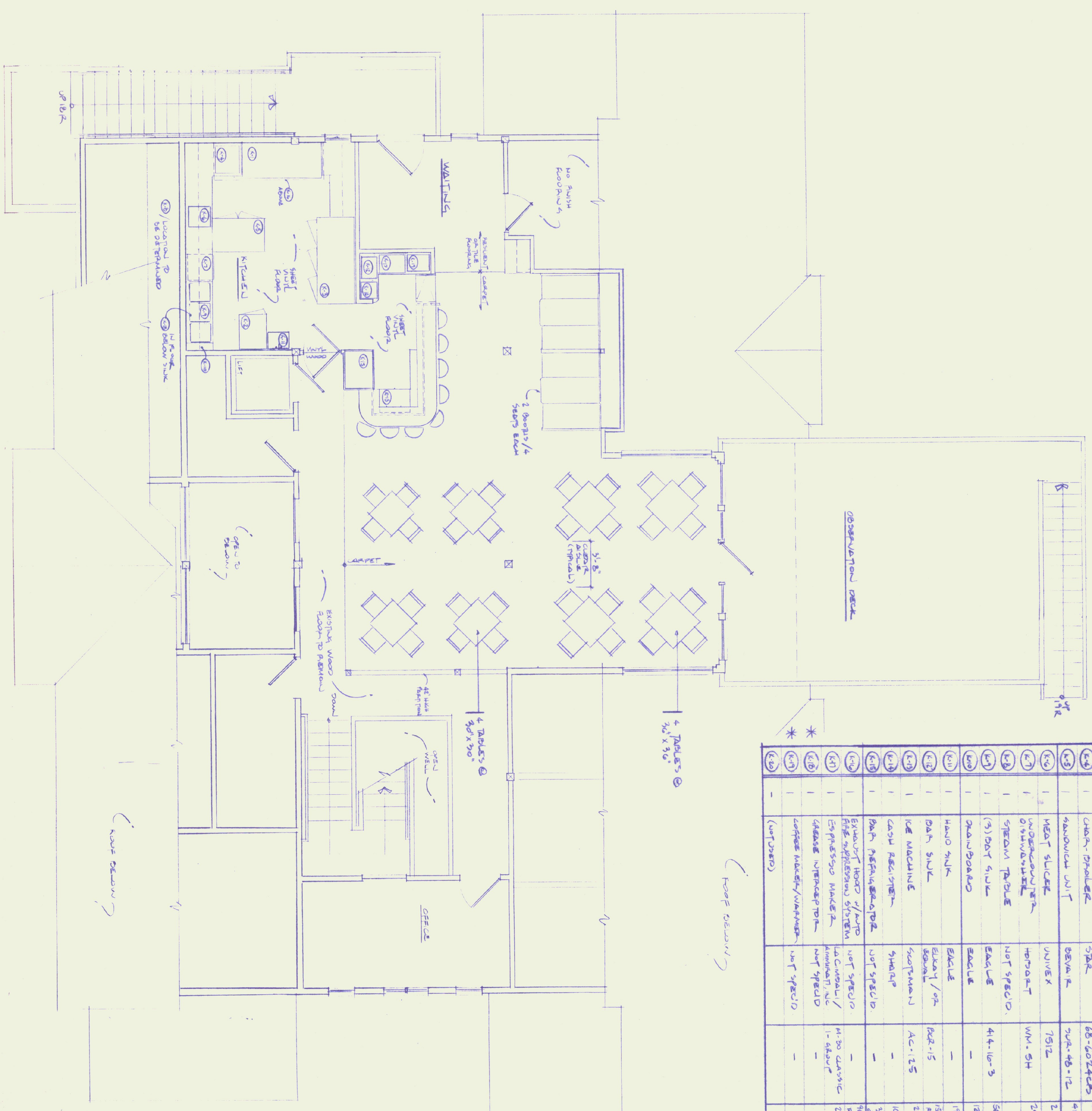
Scale: 1/4" = 1'-0"

DATE REVISIONS
 5/26/95/AS-BUILT ELECTRICAL
 6/14/95/REVISIONS
 8/14/95/REVISIONS
 11/14/95/REVISIONS

Mark R. McManus
ARCHITECT
 Box 1204
 Middletown Springs, VT 05757
 (802)235-2518

PROPOSED ALTERATIONS TO PASSENGER TERMINAL BUILDING @ THE RUTLAND AIRPORT
 FOR:
AMELIA'S CANTEN
 AIRPORT ROAD
 CLARENDON, VERMONT

Drawings No
1
 of 1



KITCHEN / BAR EQUIPMENT SCHEDULE

SYM.	REQ'D	DESCRIPTION	MANUFACTURER	MODEL #	REMARKS
(K-1)	1	RAVINE	CARBONIO	LS29	12" W X 31 1/2" D X 57 1/2" H / 0 BURNERS, 2 COOK. OVENS, BROILERS, 61000LS
(K-2)	1	(1) POPE FRIG. CABINET	DAVITA	EF-24	36" W X 33 1/2" D X 84 1/2" H
(K-3)	1	(3) POPE COOLER	DAVITA	ER-14	18" W X 33 1/2" D X 84 1/2" H
(K-4)	1	COFF. PROLEK	DAVITA	68-6024C9	24" W X 24" D X 16" H
(K-5)	1	HANDWASH UNIT	DAVITA	24A-46-12	48" W X 27" D X 35 1/2" H
(K-6)	1	HEAT SLICER	UNIVEX	7512	21" W X 20 1/2" D X 19" H
(K-7)	1	UNDERCOUNTER DISHWASHER	HORBAET	WM-5H	24" W X 24" D X 34 1/2" H
(K-8)	1	SPEEDY TABLE	NOT SPEC'D	44-16-3	36" W X 24" D X 37 1/2" H
(K-9)	1	(3) BAR STUKE	EALE	-	12" W X 24" D / VERTICAL STUKE - SEE PLAN
(K-10)	1	DRAWBOARD	EALE	-	17" W X 14 3/4" D X 6" H
(K-11)	1	HAND SINK	EALE	-	31" W X 15" D / COMPARTMENT, HOT, COLD WATER ONLY, OVER-SINK DRAIN LUGS ON REAR FOR VENT-VALVED SET UP
(K-12)	1	ICE MACHINE	SCOTSMAN	AC-125	24 1/2" W X 20 1/2" D X 55 1/2" H
(K-13)	1	COFF. REFRIG.	SHARP	-	16" W X 17" H X 12" D
(K-14)	1	BATH REF. REFRIG.	NOT SPEC'D	-	32" W X 28" D X 78" H (APPROX. 91" H - VENTIL. 91" H, MODEL, 576 W/ARCH REFRIG. OVER) (16" W X 16" D X 11" H (APPROX. 51" H - PROVIDE SHOP DRAWINGS TO ARCHITECT FOR REVIEW & APPROVAL).
(K-15)	1	ESPRESSO MAKER	LA CROMA / AMERICAN	M-30 CLASSIC	16" W X 16" D X 11" H
(K-16)	1	GRABBER INTERCEPTION	NOT SPEC'D	-	23 1/2" W X 20 1/2" D X 18 1/2" H
(K-17)	1	COFFEE MAKER / WARMER	NOT SPEC'D	-	-
(K-18)	1	(NOT SHOWN)	NOT SPEC'D	-	-

OCCUPANT LOAD
 32 SEATS (MOVABLE TABLES)
 8 SEATS (BOOTH)
 8 SEATS (BAR)
 2 EMPLOYEES
 50 MAX. TOTAL OCCUPANTS

KITCHEN / BAR EQUIPMENT FLOORING & SEATING PLAN SECOND FLOOR PLAN
 SCALE: 1/4" = 1'-0"

DATE REVISED
 1-5-95 / ISSUED FOR SHOWN
 1-26-95 / ISSUED FOR MEET. MEET. REVIEW

Mark R. McManus
ARCHITECT
 Box 1204
 Middletown Springs, VT 05757
 (802)235-2518

PROPOSED ALTERATIONS TO PASSENGER TERMINAL BUILDING @ THE RUTLAND AIRPORT FOR:
AMELIA'S CANTINE
 AIRPORT ROAD
 CLARENDON, VERMONT

Drawings No. **K-1**