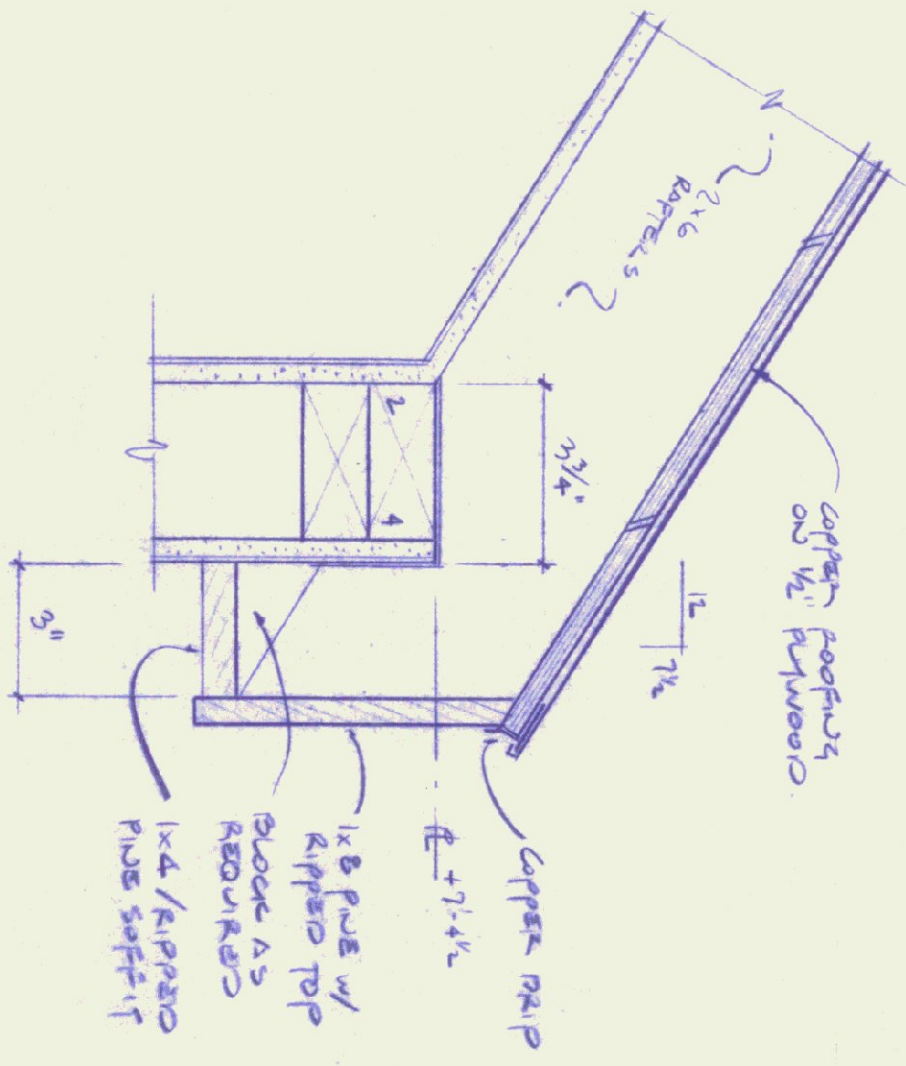
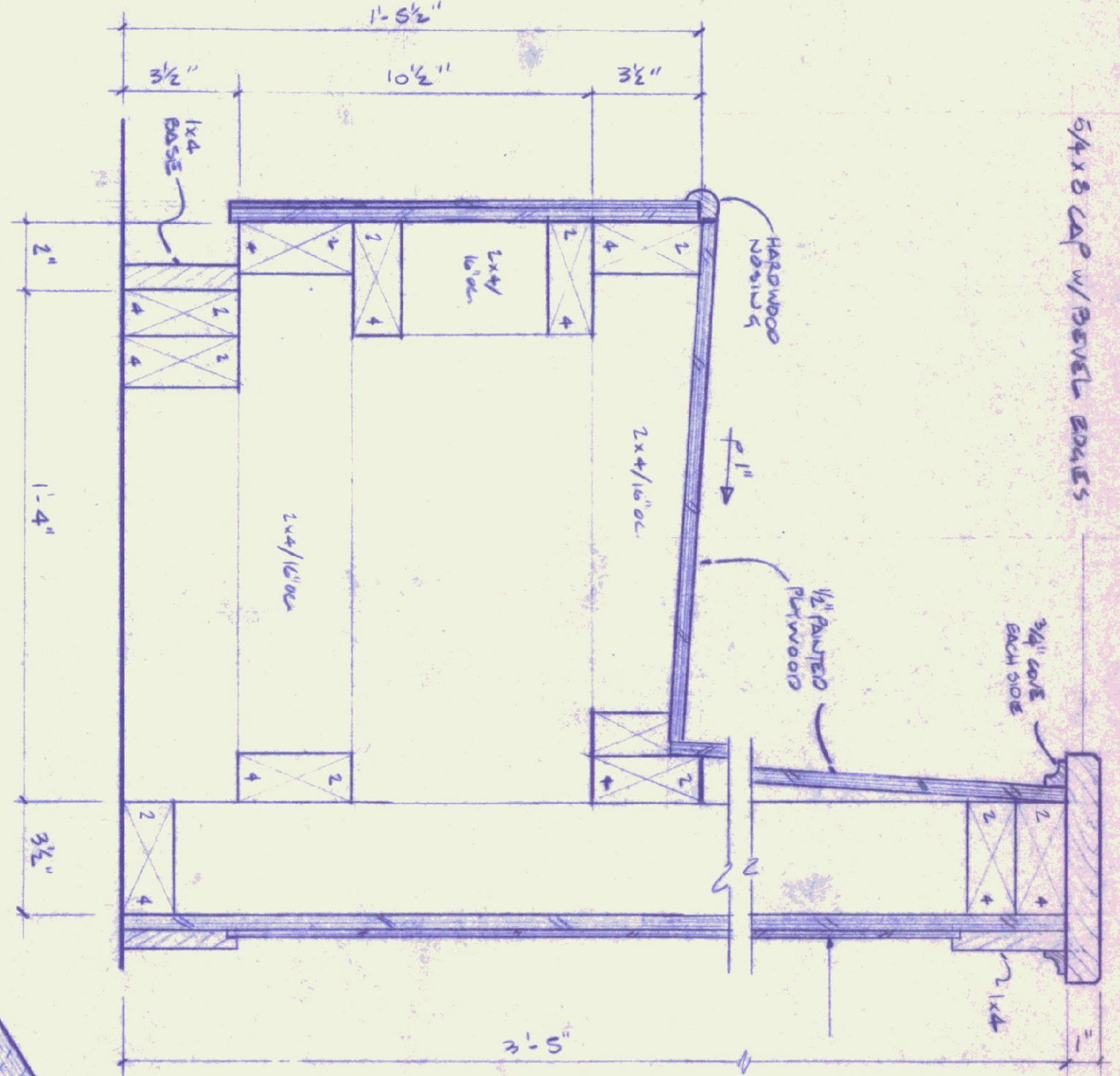


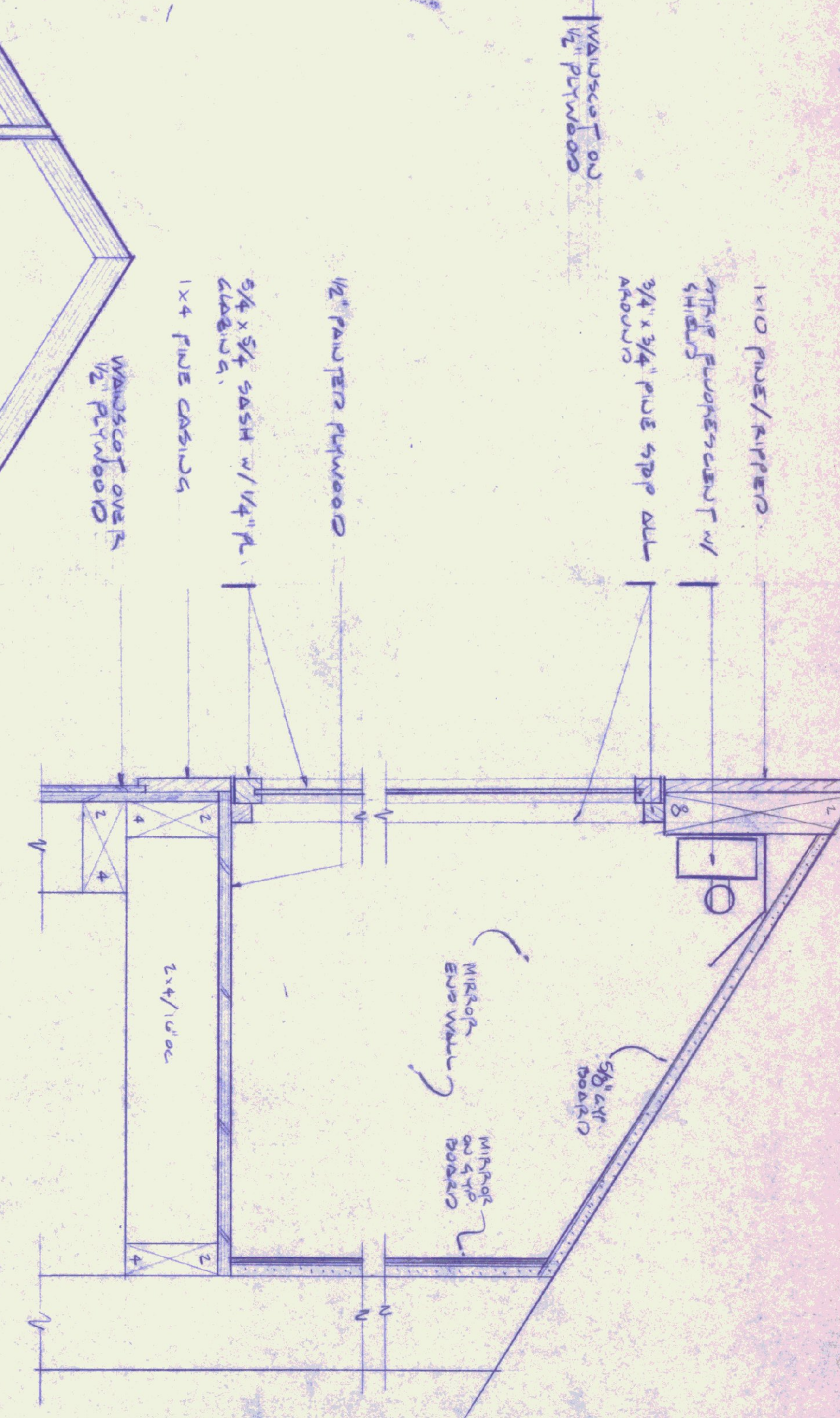
DAN RAFTER DETAIL 1  
SCALE: 3/4" = 1'-0"



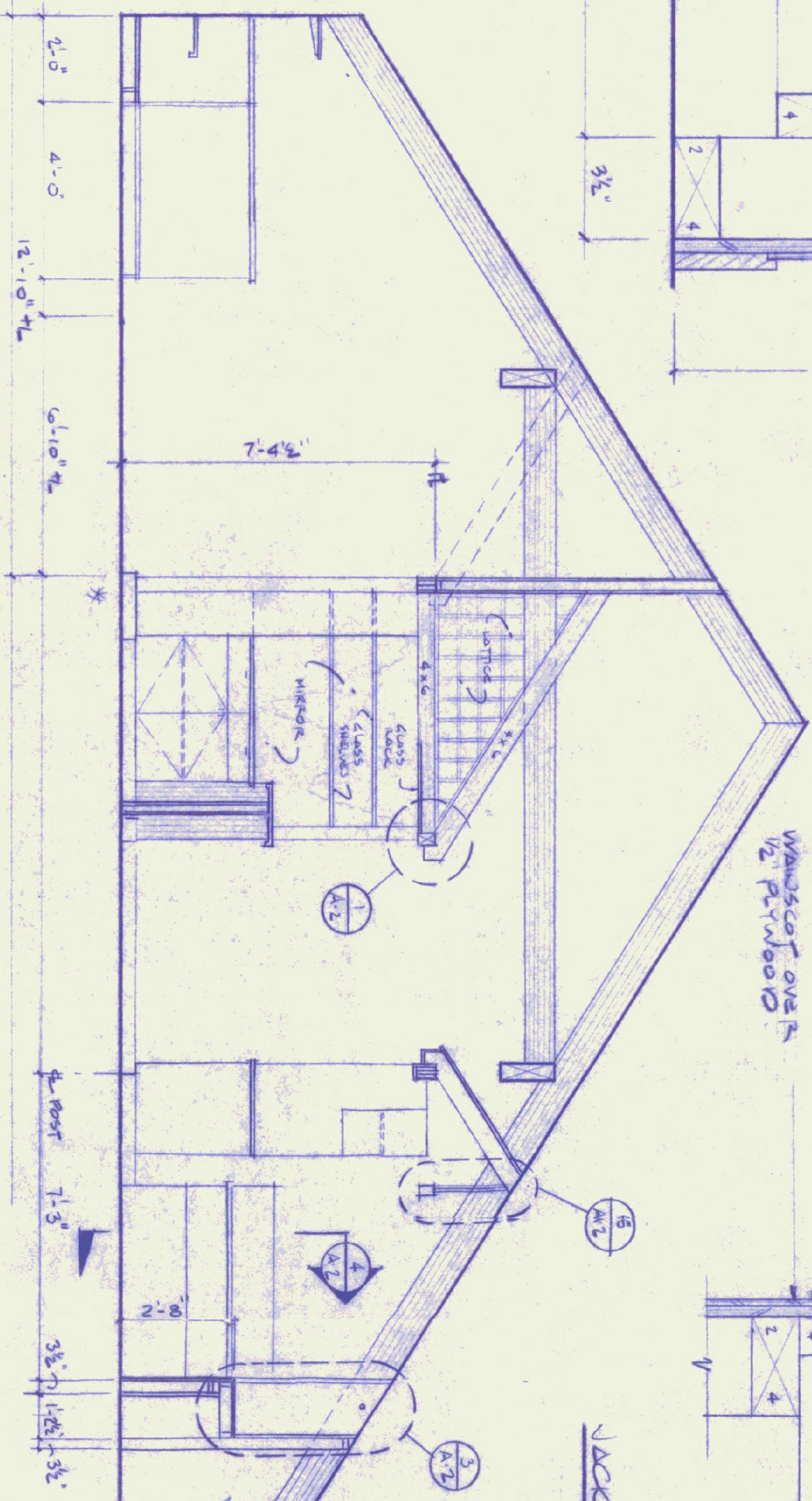
RAFTER DETAIL 2  
SCALE: 3/4" = 1'-0"



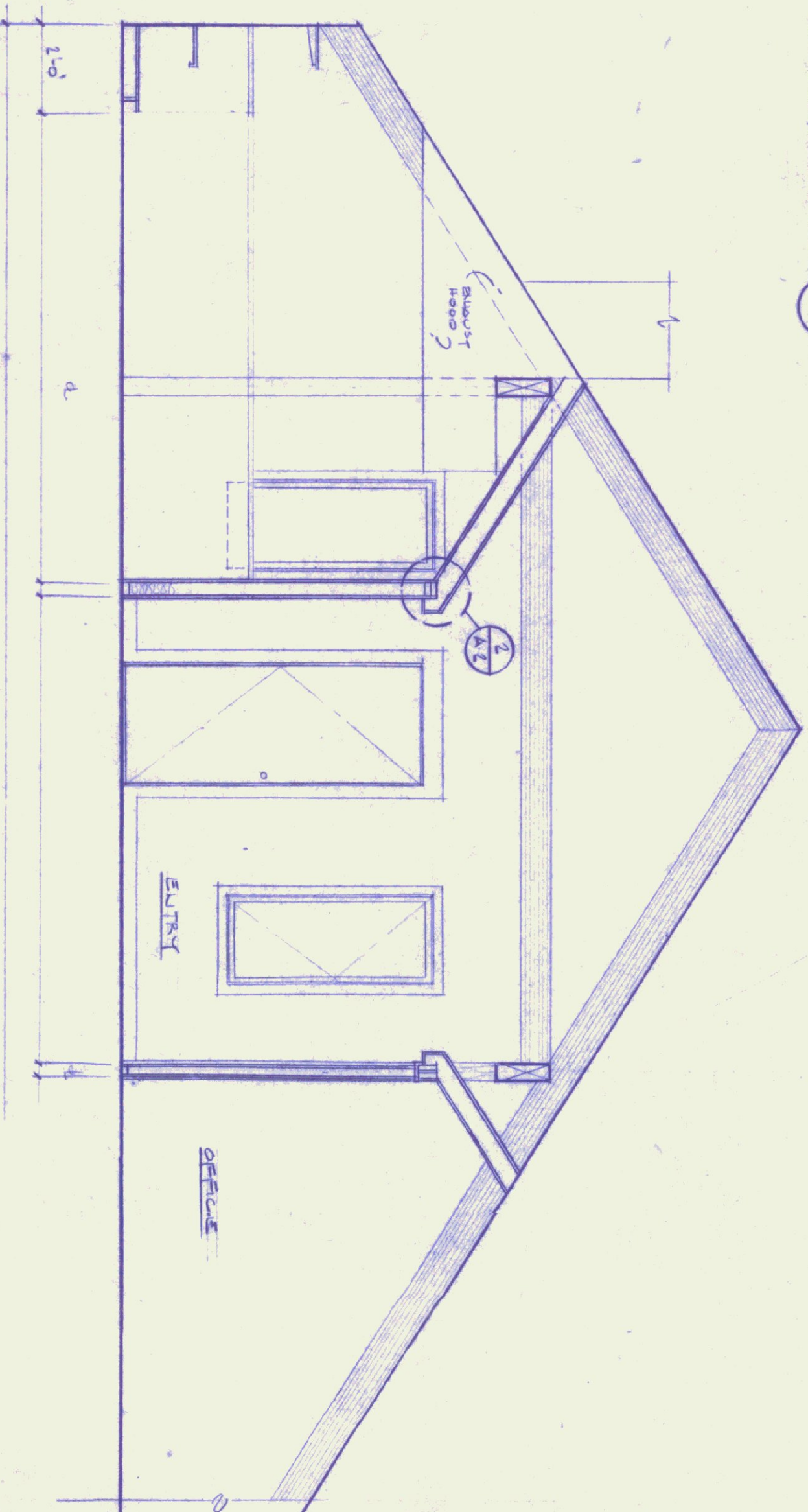
BOOTH/BENCH DET. 4  
SCALE: 3/4" = 1'-0"



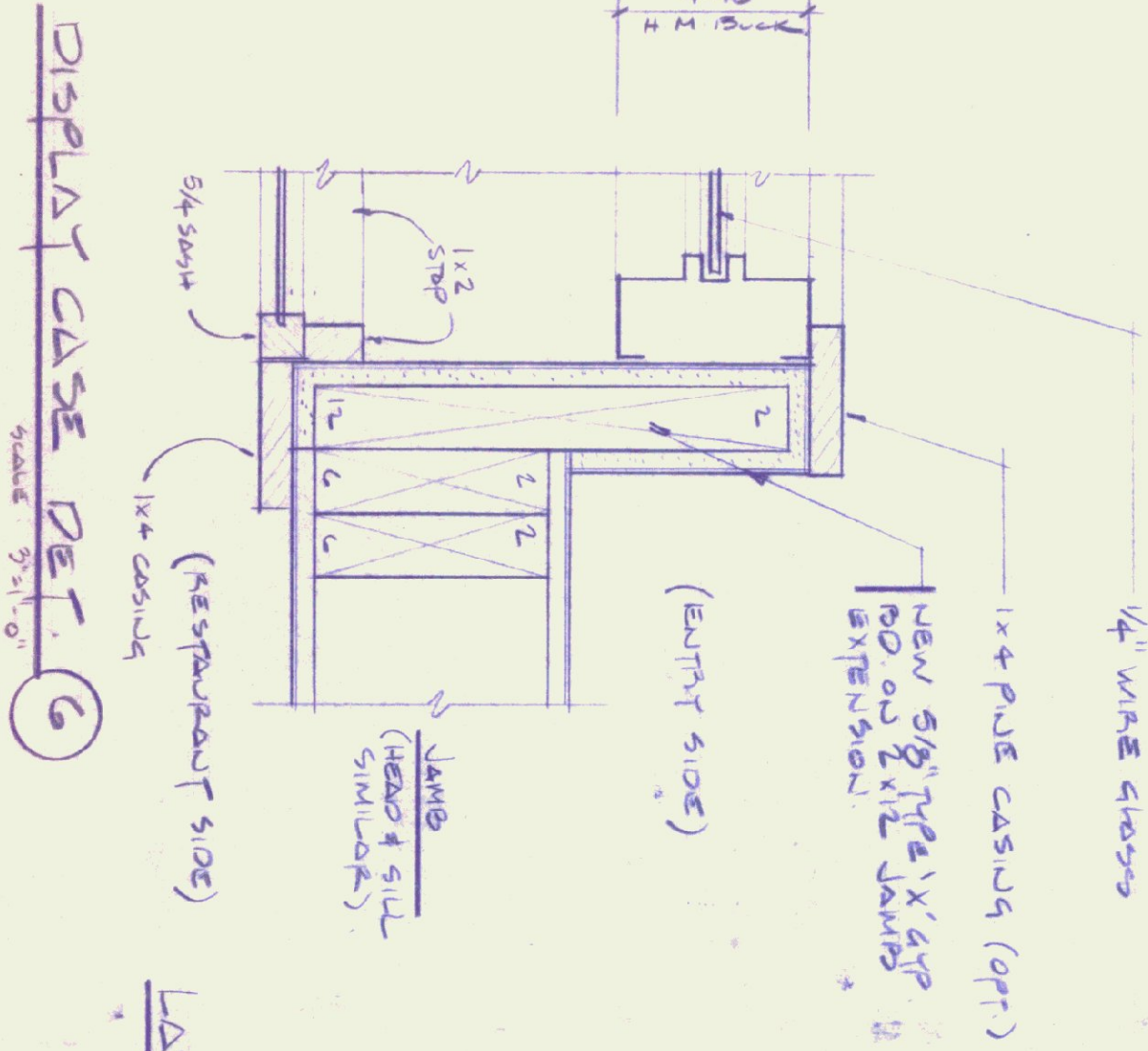
VACUET CASE DETAIL 3  
SCALE: 3/4" = 1'-0"



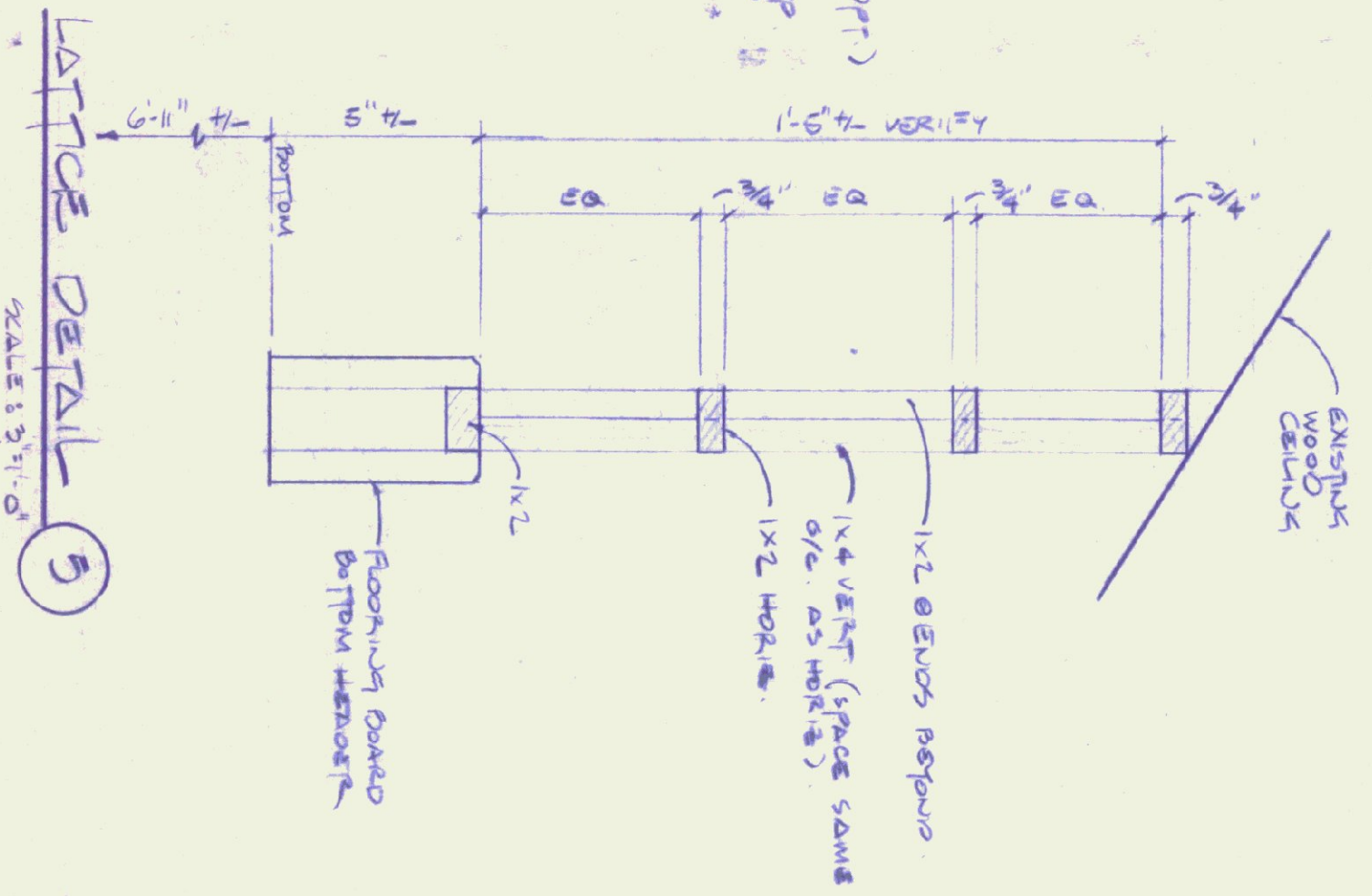
SECTION B



SECTION A



DISPLAY CASE DET. 6  
SCALE: 3/4" = 1'-0"



LATTICE DETAIL 5  
SCALE: 3/4" = 1'-0"

DATE / REVISIONS  
1-4-95 / 1/4" WOOD PART  
REVISION WORK  
2-18-95 / 1/4" WOOD PART  
DETAILS 1/4" = 1'-0"  
3-2-93 / 1/4" WOOD PART  
3-4-93

Mark R. McManus  
**ARCHITECT**  
Box 1204  
Middletown Springs, VT 05757  
(802)235-2518

PROPOSED ALTERATIONS TO PASSENGER  
TERMINAL BUILDING @ THE RUTLAND AIRPORT  
FOR:  
**AMELIA'S CANTINE**  
AIRPORT BOARD  
CLARENDON, VERMONT

DRAWING NO. **A-2**