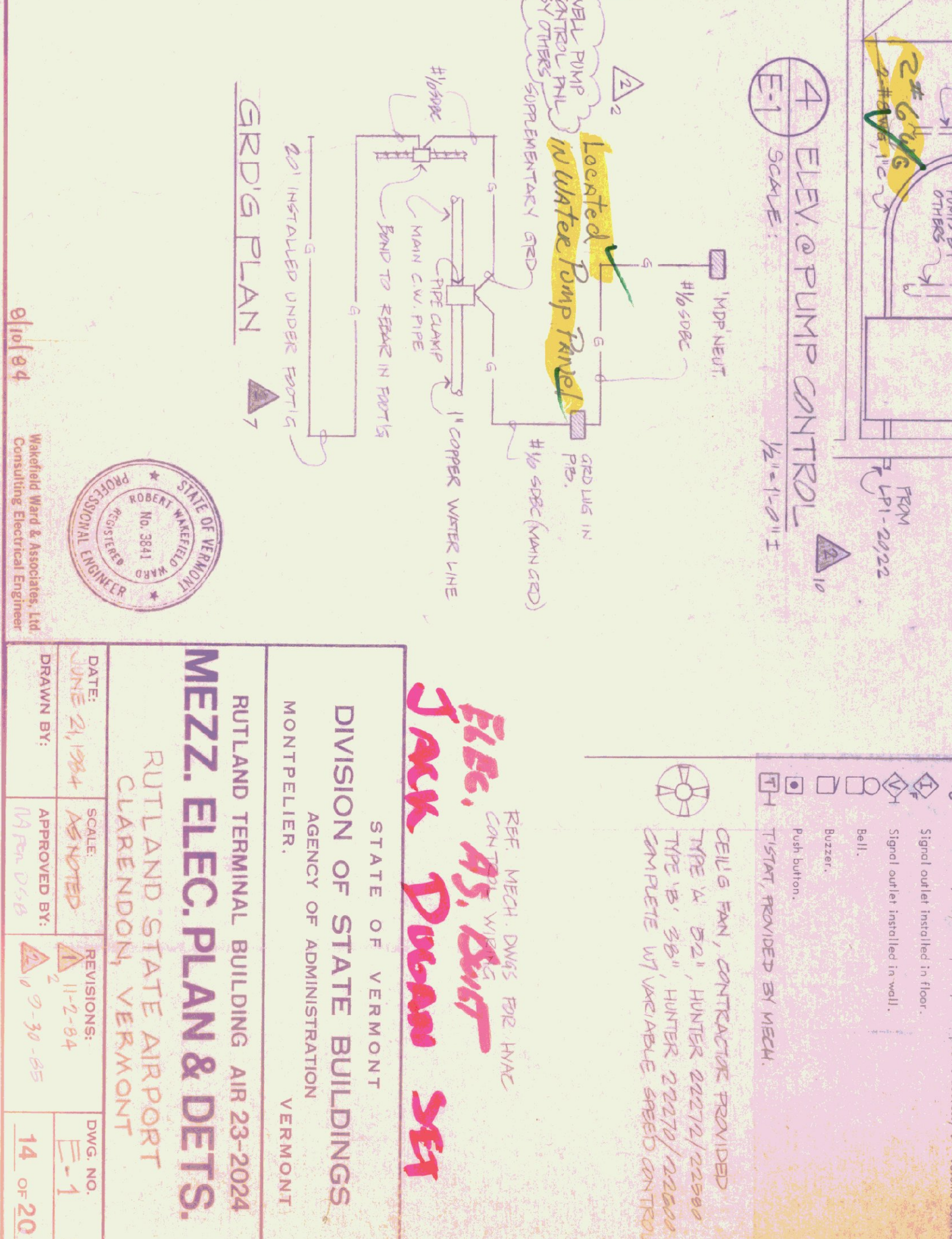
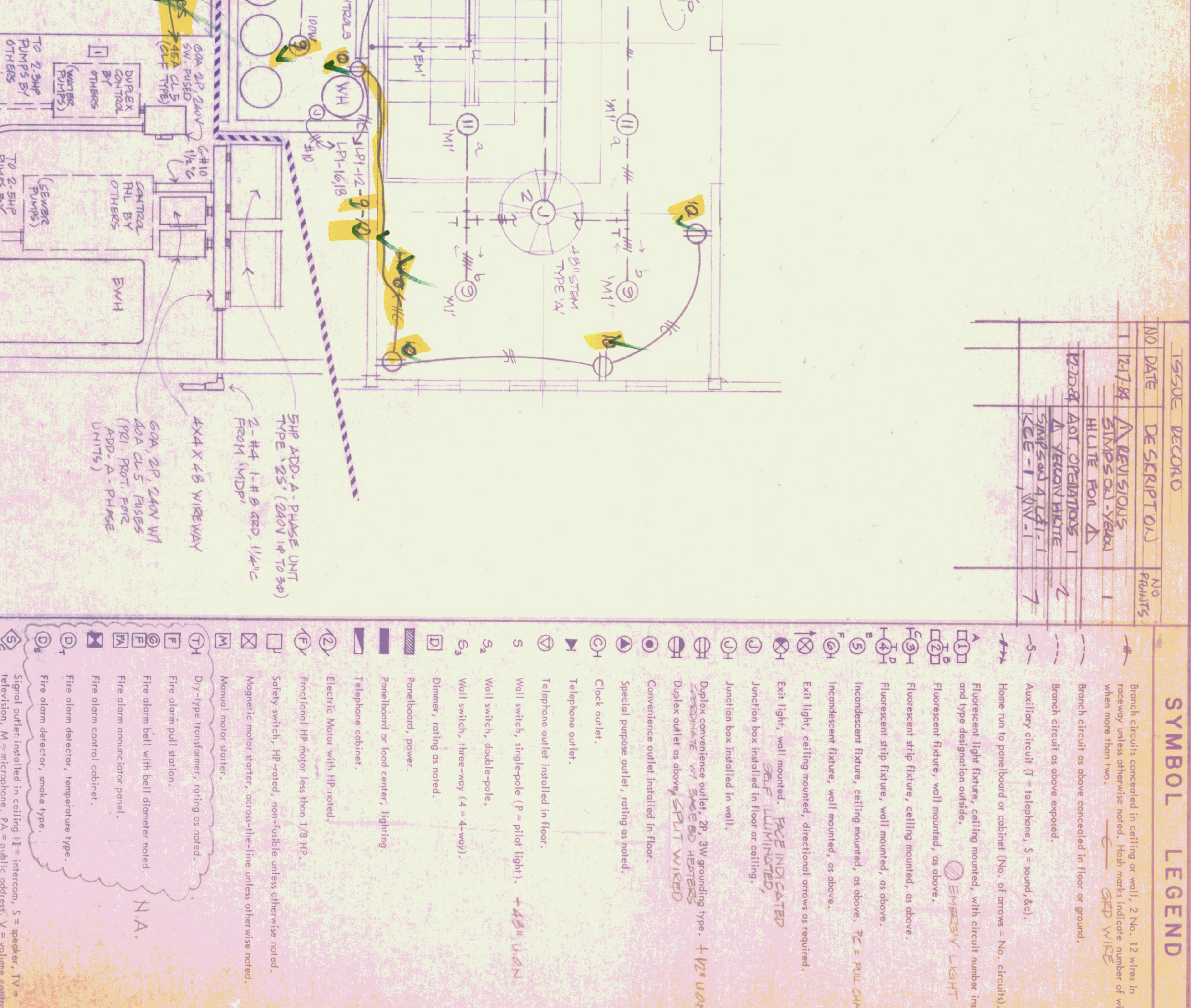
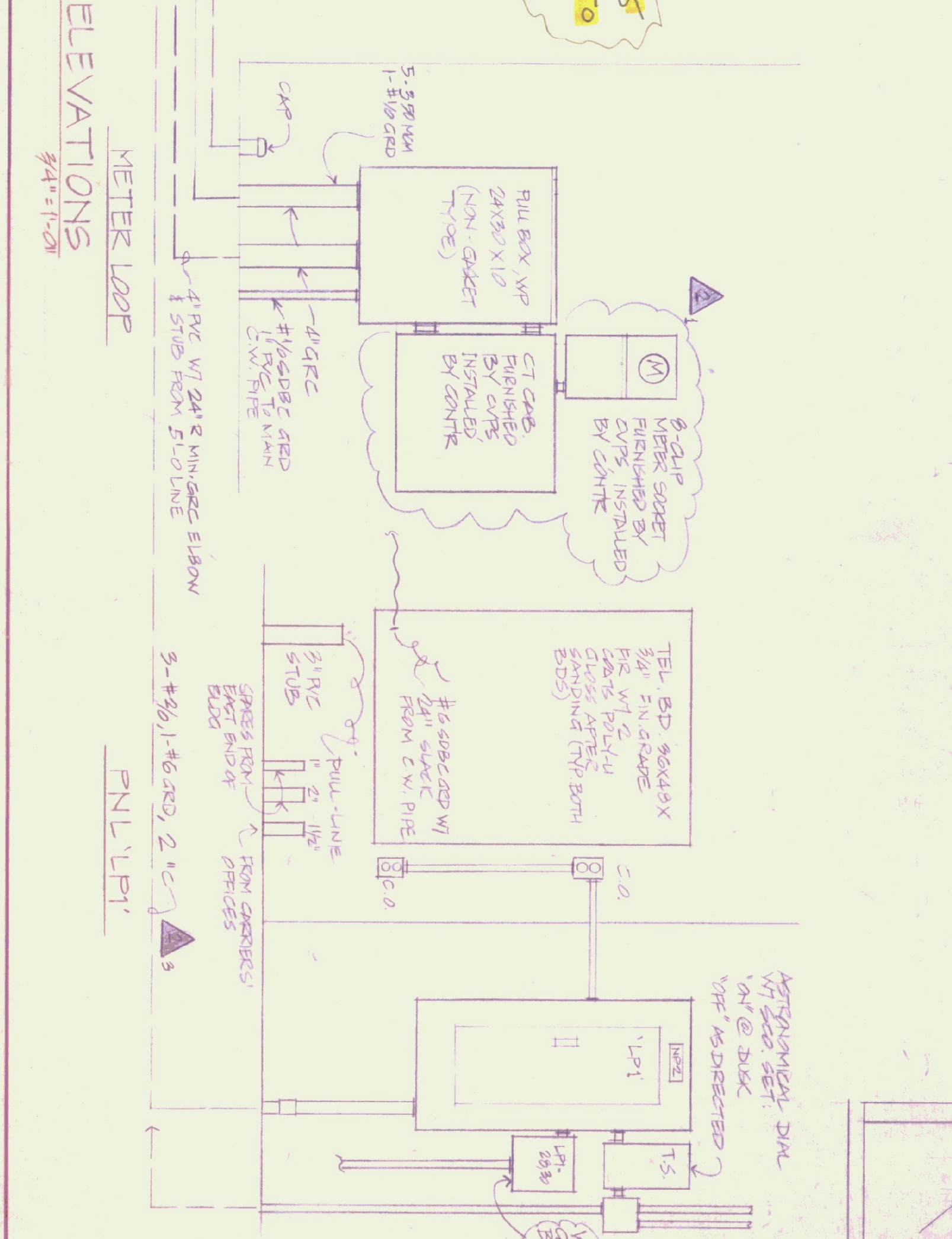
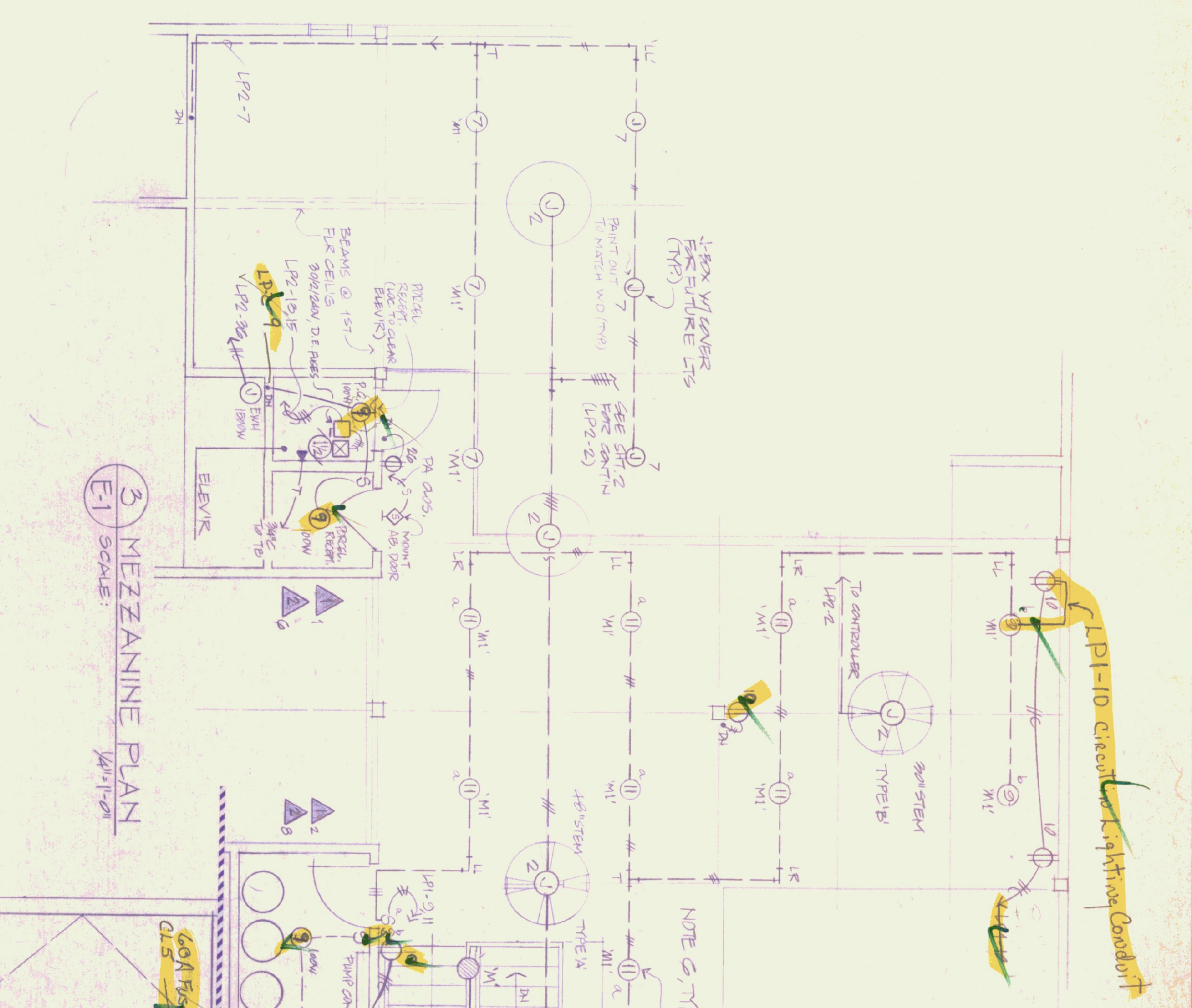
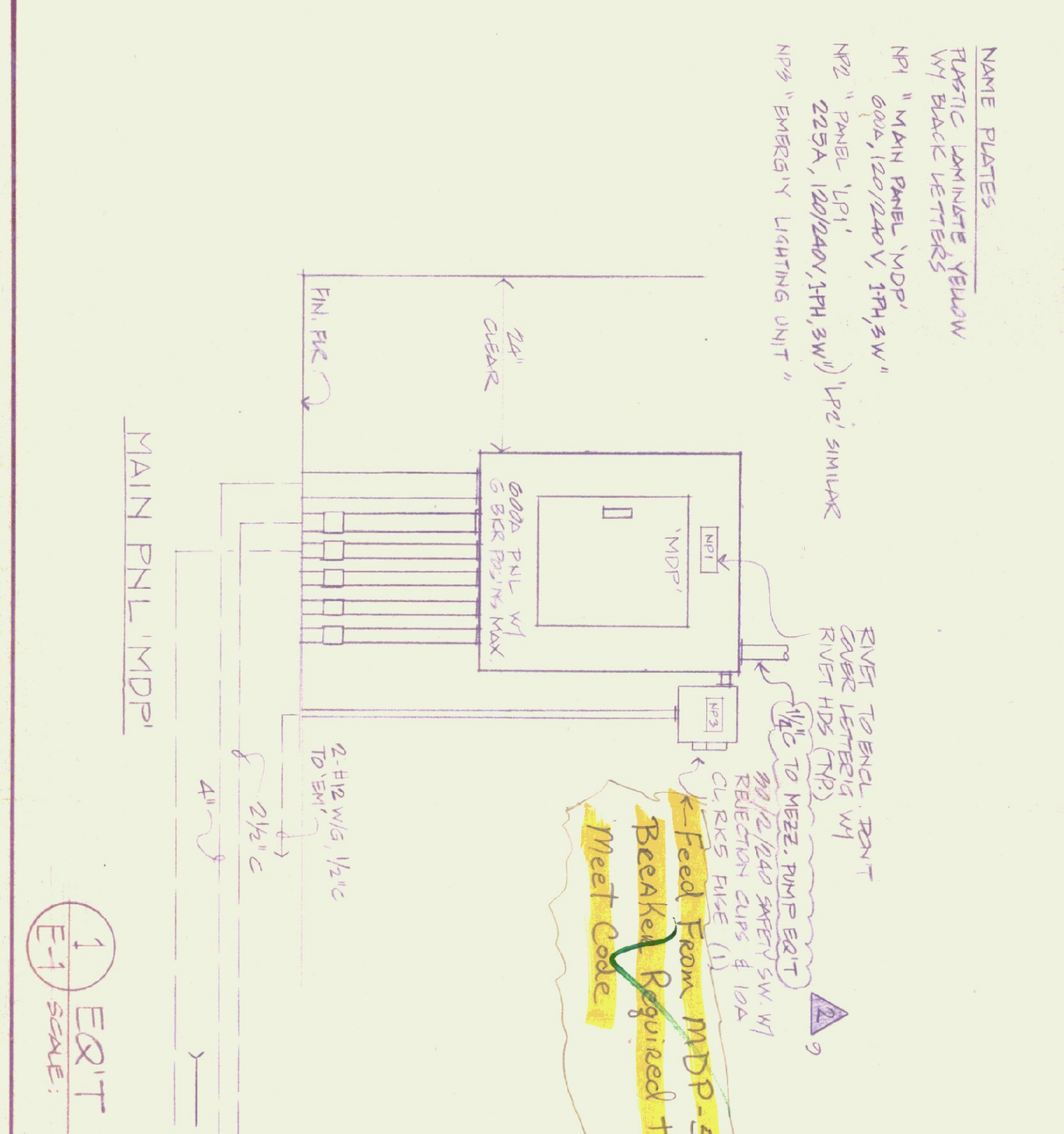
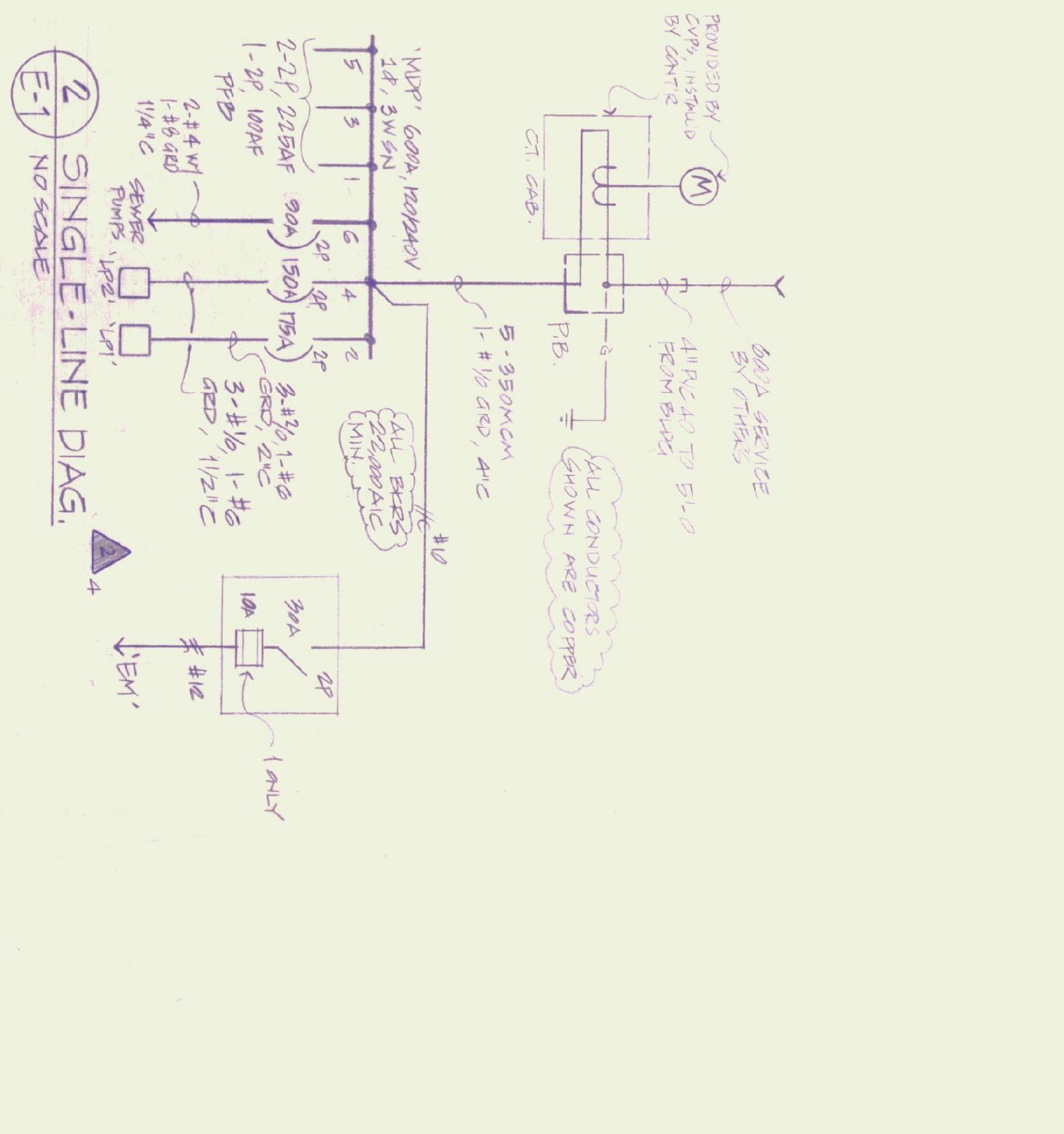


Lighting Fixture Schedule	Description	Lamps	Equal to	Lighting Fixture Schedule	Description	Lamps	Equal to
1	WALL MOUNTED SINGLE-LAMP FLUOR. METAL BOX SHIELD, BRONZE FIN.	1-F40W	LM1000	11	SMC AS '1', BUT WITH LO-TEMP BALLASTS	2-F40W	LIGHTING FIX 034-4281
2	SMC AS '1', BUT WITH LO-TEMP BALLASTS	2-F40W	LM1000	12	SMC AS '1', BUT WITH LO-TEMP BALLASTS	2-F40W	LIGHTING FIX 034-4281
3	SMC AS '1', BUT WITH LO-TEMP BALLASTS	2-F40W	LM1000	13	SMC AS '1', BUT WITH LO-TEMP BALLASTS	2-F40W	LIGHTING FIX 034-4281
4	SMC AS '1', BUT WITH LO-TEMP BALLASTS	2-F40W	LM1000	14	SMC AS '1', BUT WITH LO-TEMP BALLASTS	2-F40W	LIGHTING FIX 034-4281
5	SMC AS '1', BUT WITH LO-TEMP BALLASTS	2-F40W	LM1000	15	SMC AS '1', BUT WITH LO-TEMP BALLASTS	2-F40W	LIGHTING FIX 034-4281



NO.	DATE	DESCRIPTION	BY
1	11-2-84	REVISIONS	AS NOTED
2	11-2-84	REVISIONS	AS NOTED
3	11-2-84	REVISIONS	AS NOTED

**SYMBOL LEGEND**

- 1. Single circuit in ceiling or wall, 2 No. 12 wires in raceway (more than two conductors), floor finish indicator, number of wires when more than two.
- 2. Branch circuit as shown concealed in floor or ground.
- 3. Branch circuit as shown exposed.
- 4. Auxiliary circuit (1 telephone, 5 sound bell).
- 5. Home run to panelboard or cabinet (No. of wires = No. circuit).
- 6. Fluorescent light fixture, ceiling mounted, with circuit number inside and type designation outside.
- 7. Fluorescent fixture, wall mounted, as above.
- 8. Fluorescent strip fixture, ceiling mounted, as above.
- 9. Fluorescent strip fixture, wall mounted, as above.
- 10. Incandescent fixture, ceiling mounted, as above.
- 11. Incandescent fixture, wall mounted, as above.
- 12. Exit light, ceiling mounted, directional arrow as required.
- 13. Exit light, wall mounted, as above.
- 14. Junction box installed in floor or ceiling.
- 15. Junction box installed in wall.
- 16. Duplex convenience outlet, 20, 3W grounding type, 115V/100V.
- 17. Duplex outlet as shown, SPLIT WIRING.
- 18. Convenience outlet installed in floor.
- 19. Special purpose outlet, rating as noted.
- 20. Clock outlet.
- 21. Telephone outlet.
- 22. Telephone outlet installed in floor.
- 23. Wall switch, single-pole (P = pilot light), 480V (UL-01).
- 24. Wall switch, double-pole.
- 25. Dimmer, rating as noted.
- 26. Panelboard, power.
- 27. Panelboard or local center, lighting.
- 28. Telephone cabinet.
- 29. Electric motor with HP noted.
- 30. Functional HP motor, less than 1/8 HP.
- 31. Safety switch, HP-rated, non-reversible unless otherwise noted.
- 32. Magnetic motor starter, across-the-line unless otherwise noted.
- 33. Manual motor starter.
- 34. Dry-type transformer, rating as noted.
- 35. Fire alarm bell station.
- 36. Fire alarm bell with bell diameter noted.
- 37. Fire alarm connection panel.
- 38. Fire alarm control cabinet.
- 39. Fire alarm detector, temperature type.
- 40. Fire alarm detector, smoke type.
- 41. Signal outlet installed in ceiling (I = intercom, S = speaker, TV = television, M = microphone, PA = public address, V = volume control).
- 42. Signal outlet installed in floor.
- 43. Signal outlet installed in wall.
- 44. Bell.
- 45. Buzzer.
- 46. Pub. station.
- 47. TYPED PROVIDED BY MECH.
- 48. CELL'S FAN, CONTRACTOR PROVIDED.
- 49. TYPE 'A' 501, HUNTER 20210/20200.
- 50. TYPE 'B' 501, HUNTER 20210/20200.
- 51. COMPLETE W/ VARIABLE SPEED CONTROL.

**STATE OF VERMONT**  
 DIVISION OF STATE BUILDINGS  
 AGENCY OF ADMINISTRATION  
 MONTPELIER, VERMONT

**RUTLAND TERMINAL BUILDING AIR 23-2024**  
**MEZZ. ELEC. PLAN & DETS.**  
 RUTLAND STATE AIRPORT  
 CLARENDON, VERMONT

**DATE:** JUNE 21, 1984  
**SCALE:** AS NOTED  
**APPROVED BY:** [Signature]  
**DRAWN BY:** [Signature]

**REVISIONS:**  
 1 11-2-84  
 2 11-2-84  
 3 9-30-85

**DWG. NO.:** E-1  
**14 OF 20**

**FILE: Jack Deane SET**

**Waterfield Ward & Associates, Ltd.**  
 Consulting Electrical Engineer