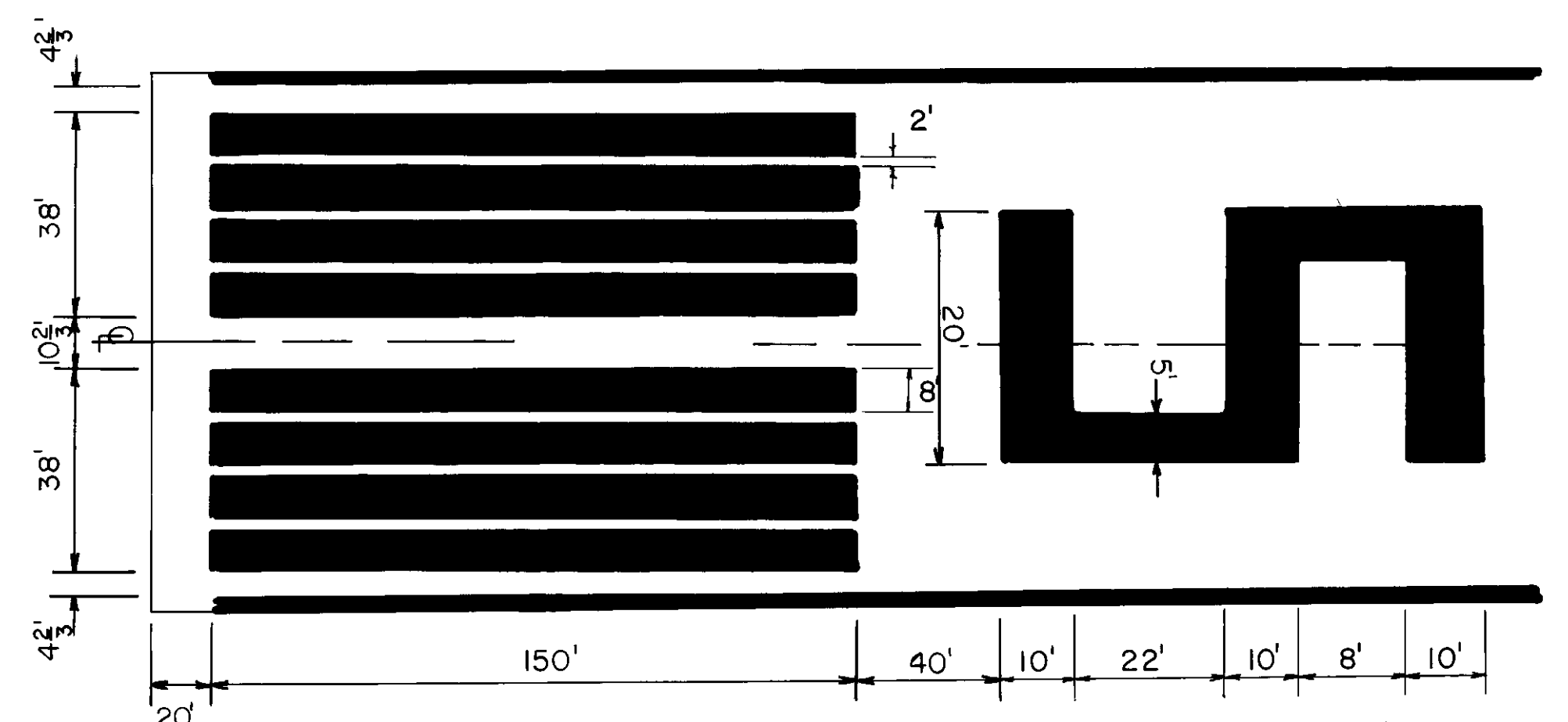
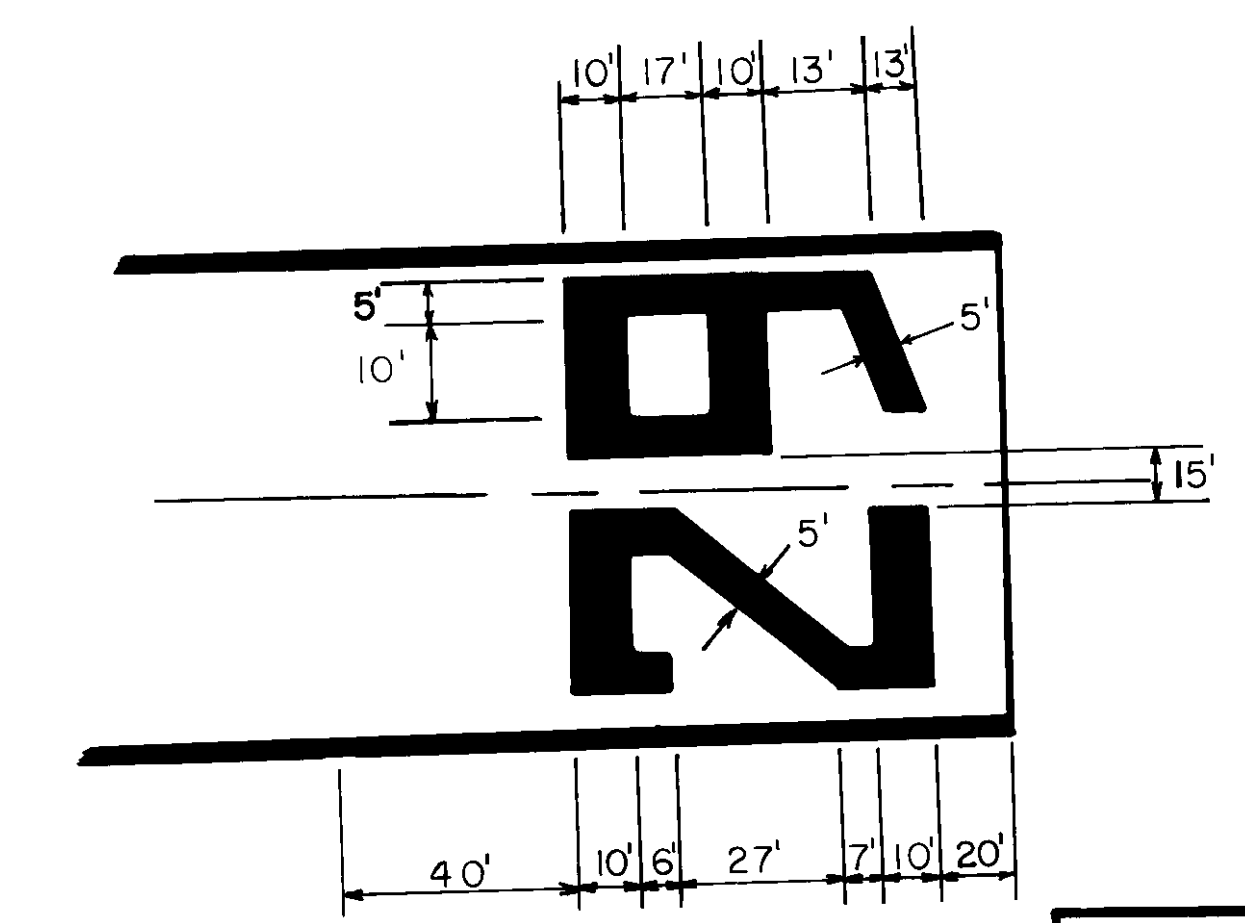
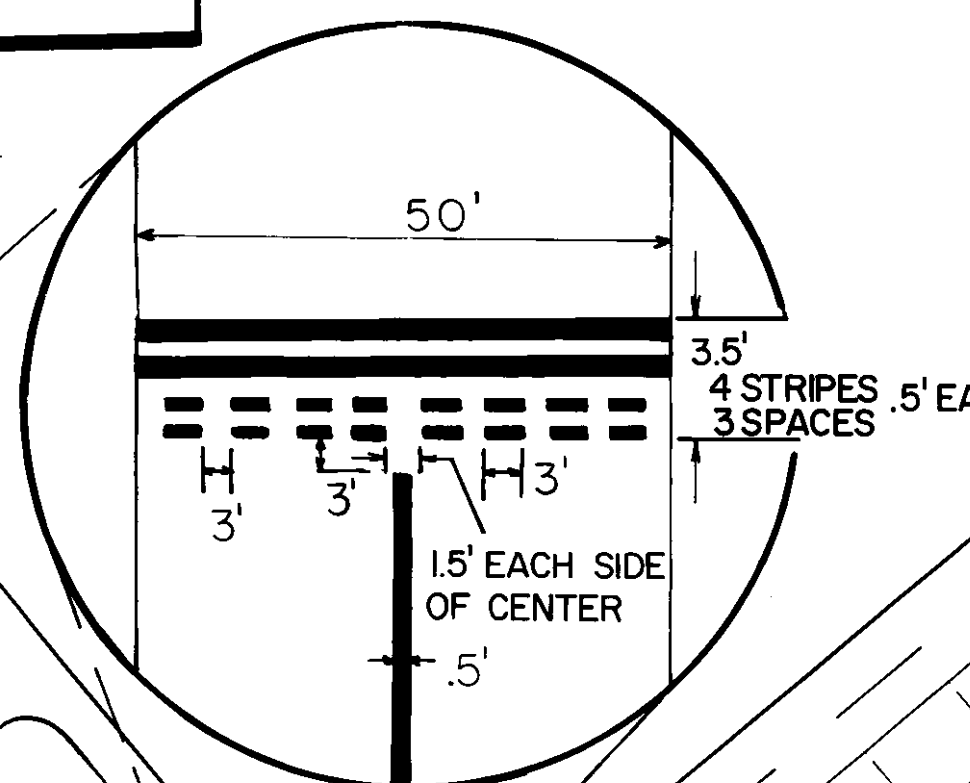
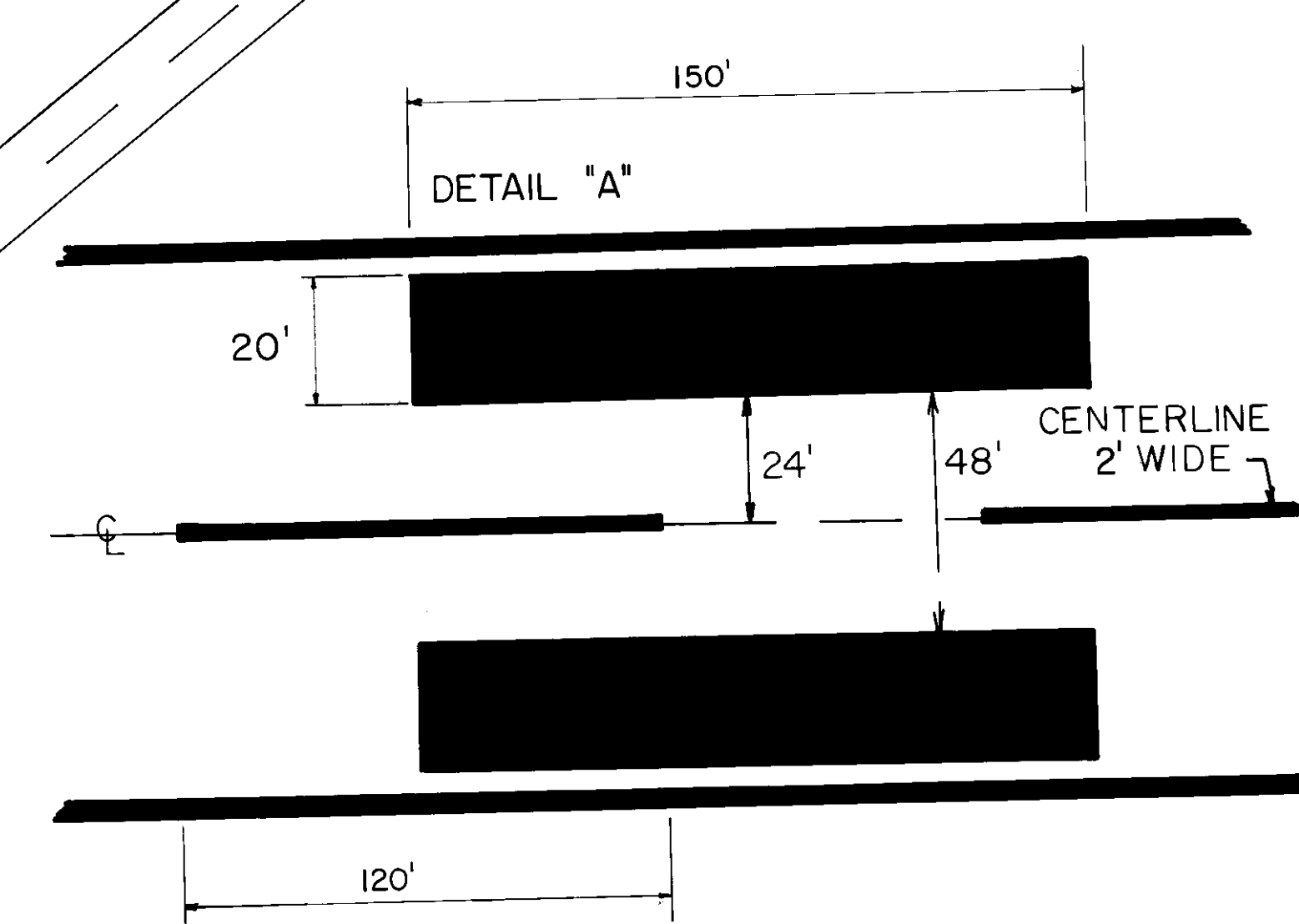
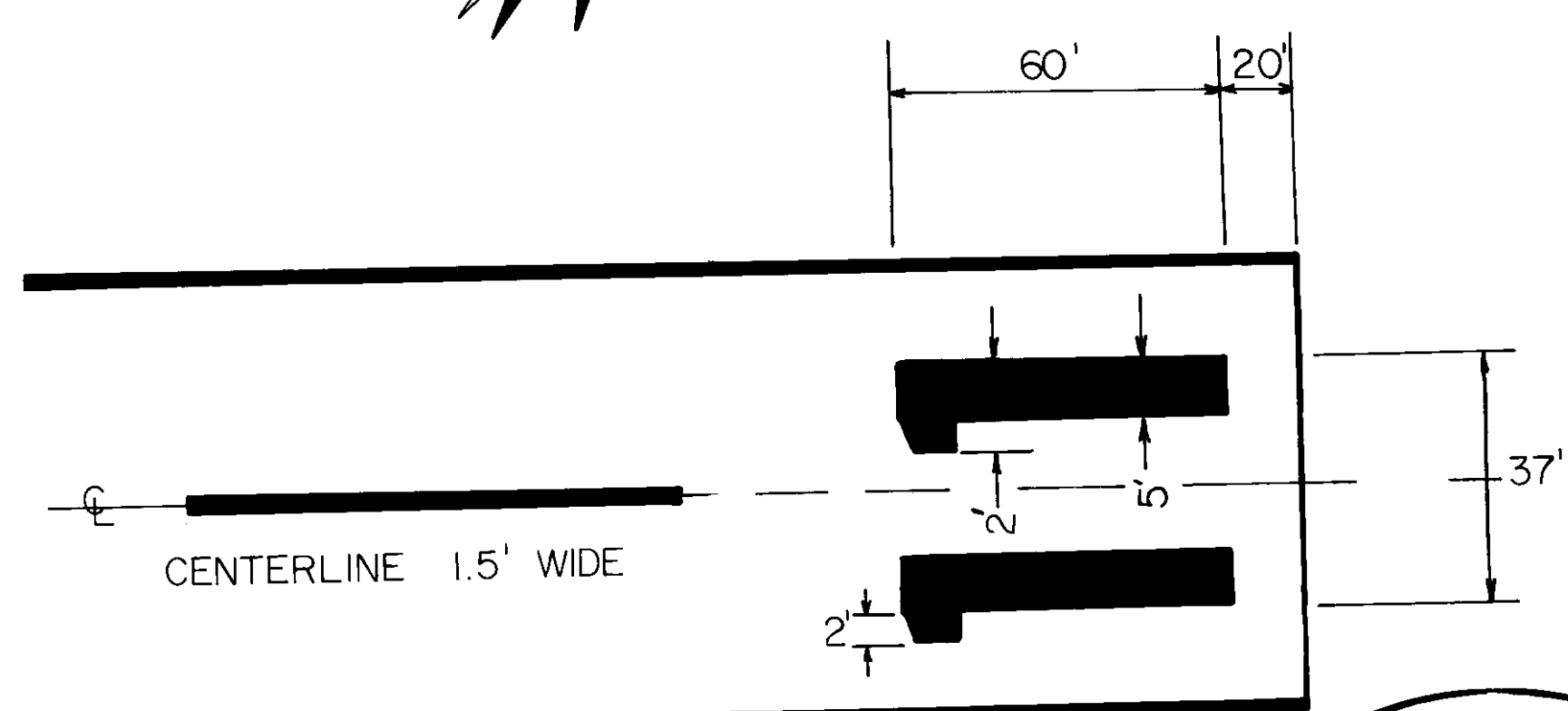
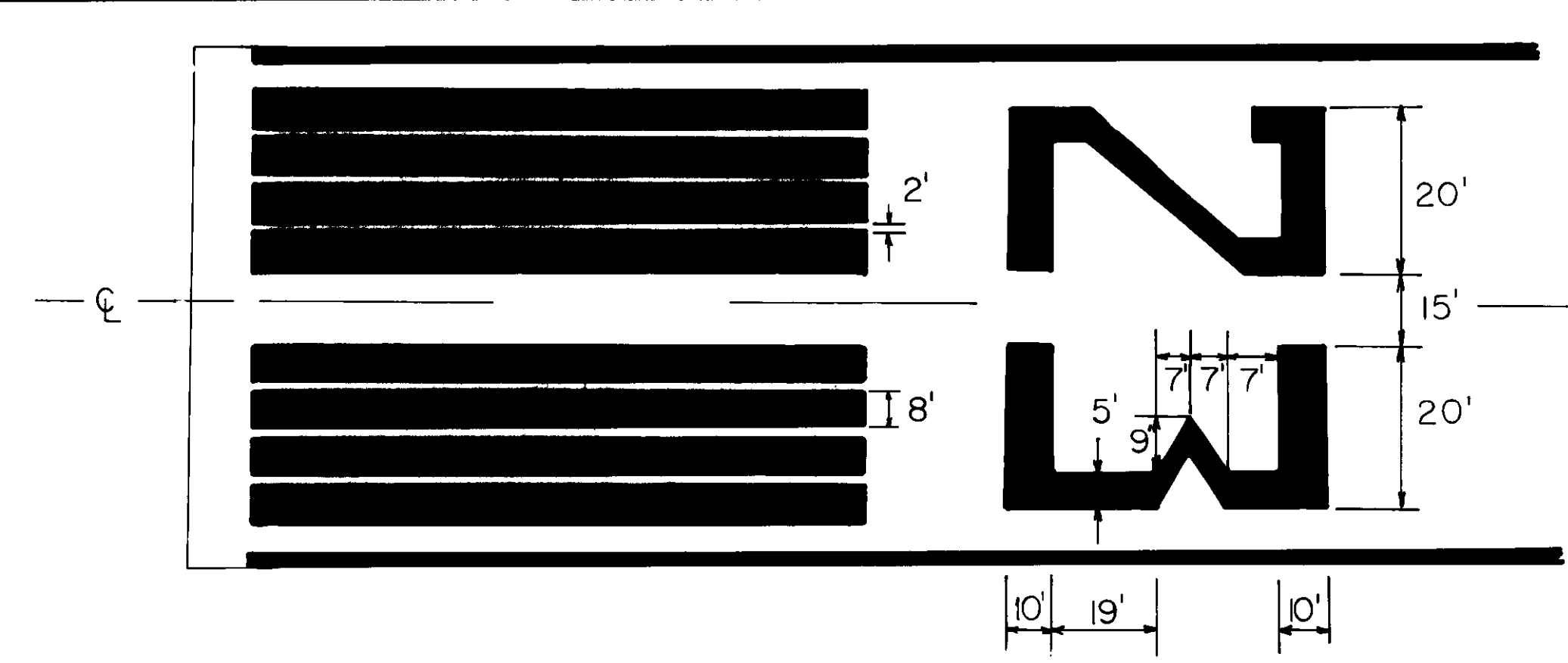
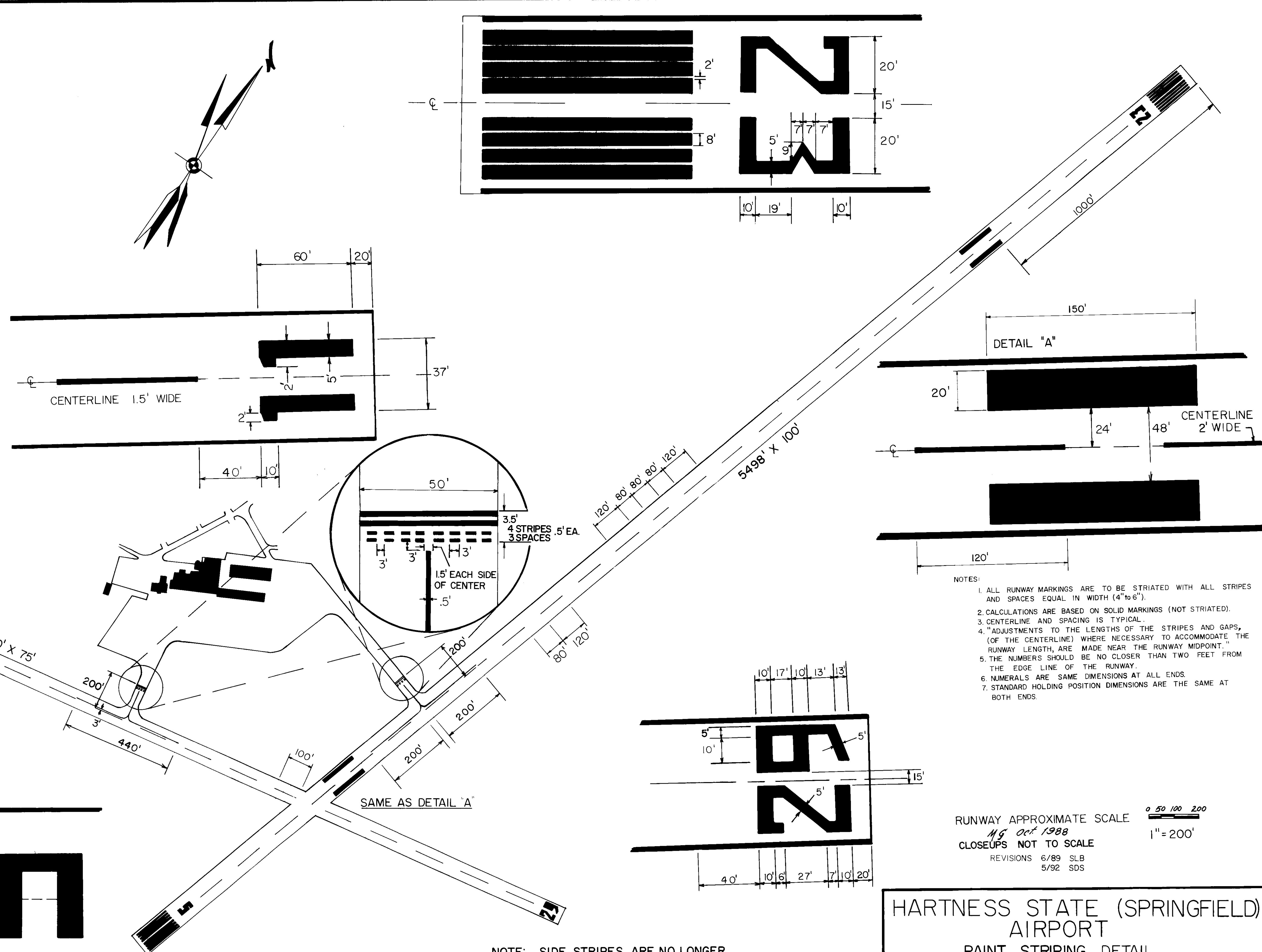


PAINT QUANTITIES						
LOCATION	SQUARE FEET		No. OF GALLONS		COLOR	
	5/23	11/29	5/23	11/29	WHITE	YELLOW
CENTERLINE STRIPE	5920	2490	59	24	★	
THRESHOLD MARKINGS	19200	—	192	—	★	
NUMERALS	1998	1994	20	20	★	
FIXED DISTANCE MARKING	12000	—	120	—	★	
HOLDING POSITION MARKING	74	74	1	1		★
TAXIWAY CENTERLINE	285	285	3	3		★



- NOTES:
1. ALL RUNWAY MARKINGS ARE TO BE STRIATED WITH ALL STRIPES AND SPACES EQUAL IN WIDTH (4" TO 6").
 2. CALCULATIONS ARE BASED ON SOLID MARKINGS (NOT STRIATED).
 3. CENTERLINE AND SPACING IS TYPICAL.
 4. "ADJUSTMENTS TO THE LENGTHS OF THE STRIPES AND GAPS, (OF THE CENTERLINE) WHERE NECESSARY TO ACCOMMODATE THE RUNWAY LENGTH, ARE MADE NEAR THE RUNWAY MIDPOINT."
 5. THE NUMBERS SHOULD BE NO CLOSER THAN TWO FEET FROM THE EDGE LINE OF THE RUNWAY.
 6. NUMERALS ARE SAME DIMENSIONS AT ALL ENDS.
 7. STANDARD HOLDING POSITION DIMENSIONS ARE THE SAME AT BOTH ENDS.

RUNWAY APPROXIMATE SCALE $\frac{1}{200}$
 MS Oct 1988
 CLOSEUPS NOT TO SCALE 1" = 200'
 REVISIONS 6/89 SLB
 5/92 SDS

NOTE: SIDE STRIPES ARE NO LONGER NECESSARY PER AC 150/5340-1F CHANGE NO.1 DATED 8/16/91

HARTNESS STATE (SPRINGFIELD) AIRPORT
 PAINT STRIPING DETAIL
 11/29 VISUAL RUNWAY
 5/23 NON-PRECISION INSTRUMENT RUNWAY