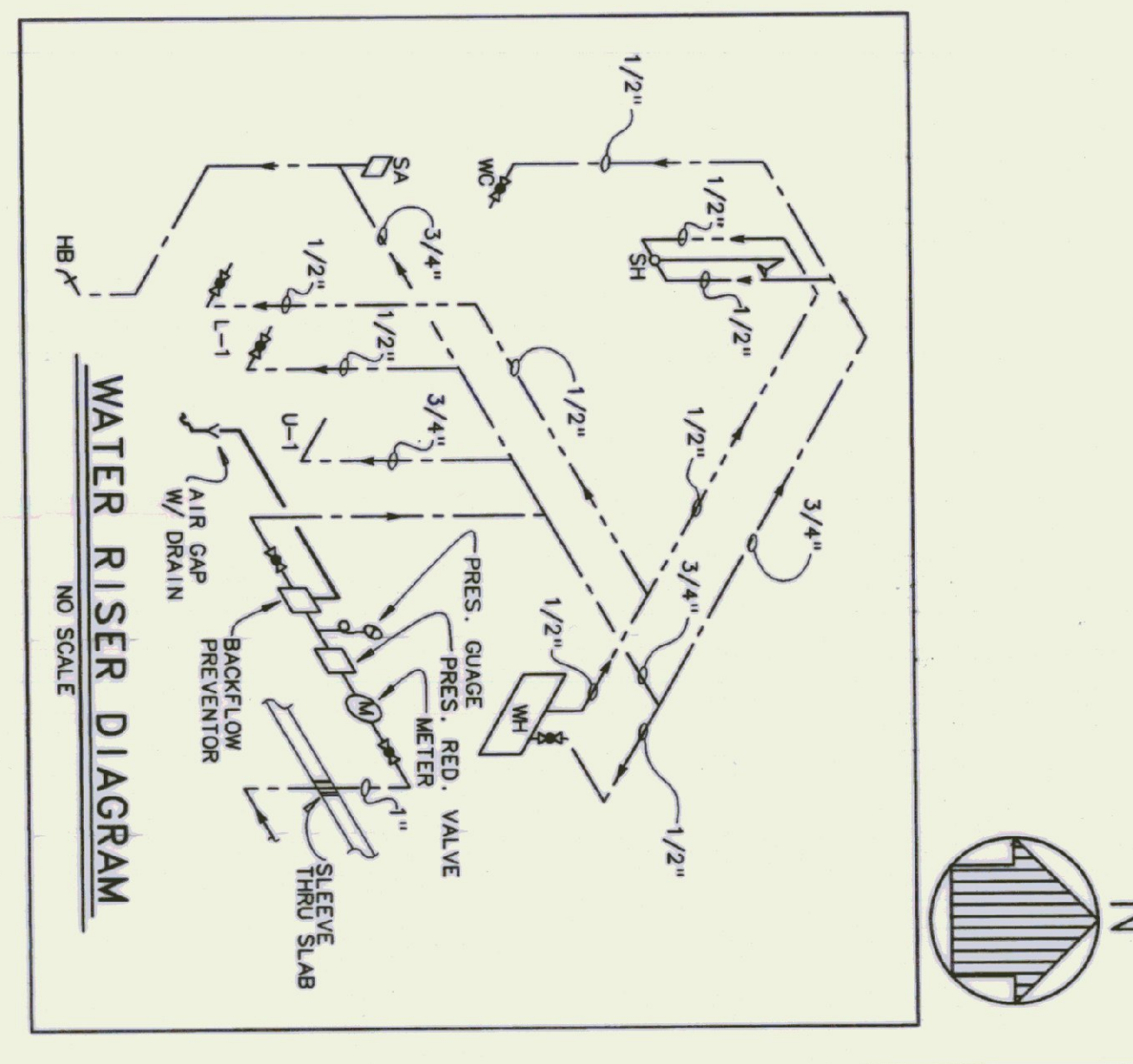
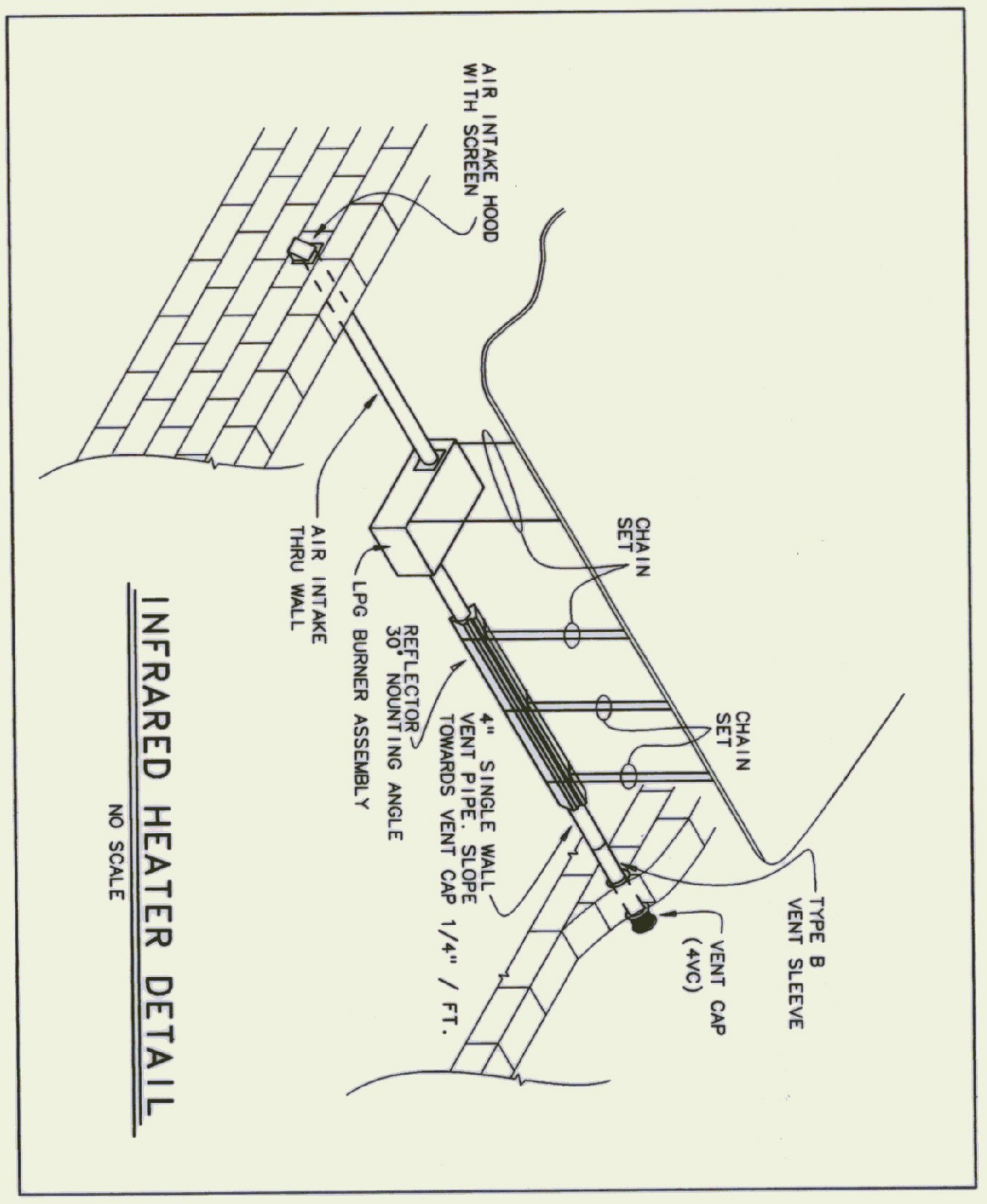
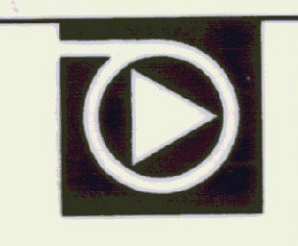


KEY	DESCRIPTION
EF-1	EXHAUST FAN - SIDEWALL, BELT-DRIVEN, 10,043 CFM, 125"SP, 535 RPM, 14.3 SONES, 1/2 HP, 120 VAC, GREENHECK SPFE38
EF-2	EXHAUST FAN - 180 CFM, 5.0 SONES, 120 VAC, 1.5 AMPS, WITH BACKDRAFT DAMPER, BROAN MODEL 509
ER	BASEBOARD RADIATION, COMMERCIAL GRADE, SLOPE TOP, 3410 BTUH, 1000 WATTS @ 240 VOLTS, 4.2 AMPS, ELECTROMODE EBST047 WITH DOUBLE POLE BUILT IN THERMOSTAT, ELECTROMODE EBSTD
IR HTR-1	INFRARED RADIANT HEATER, LP GAS FIRED STRAIGHT TUBE HEATER WITH OVERALL LENGTH OF 50' 7", DETROIT RADIANT PRODUCTS MODEL DX50 - 150P
IR HTR-2	ACCESSORIES: DIRECT SWITCH THERMOSTAT TD-128, 4" VENT TERMINAL SK-4, 4" WALL INLET CAP WITH BIRD SCREEN, 5" CHAIN SETS (MIN 8 SETS PER UNIT)
IR HTR-3	VENTED THRU-THE WALL GAS HEATER, 12,000 BTUH INPUT LP GAS, PERFECTION MODEL ASV12811
L1	COMBINATION LOUVER / MOTOR OPERATED DAMPER, 60" WIDE X 40" HIGH, EXTRUDED ALUMINUM WITH ALUMINUM INSECT SCREEN, VENT PRODUCTS MODEL 2400
	ADJUST-O-VENT HARDWARE KIT #9027
	BARBER COLMAN 120 VAC DAMPER ACTUATOR CAT. #MA 418
PTAC	PACKAGED TERMINAL AIR CONDITIONER WITH LP GAS HEAT, 12,000 BTUH COOLING, 20,000 BTUH LP GAS INPUT, 200 VOLTS, SINGLE PHASE, SUBURBAN MFG CO. MODEL DL2-1220, LP GAS



ITEM	MANUFACTURE & MODEL	TRIM & ACCESSORIES	WASTE	VENT	CW	HW	REMARKS
HB	WOOD-GRO 24P-34	VACUUM BREAKER			3/4"		
L-1	AMERICAN STANDARD TOILET LAVATORY CAT NO. 4899 012 4"	MOEN SANITESTREAM FAUCET W/ GRID DRAIN CAT NO. 9425 SUPPLIES WITH STOP	1 1/4"	1 1/2"	1/2"	1/2"	WHITE
SA	SHOCK ABSORBER	WIDE W-400 CARRIER			3/4"		
SH	SHOWER STALL, SWAN MODEL SA774S	MOEN SANITESTREAM PRESSURE BALANCED VALVE BOTS WITH VANDAL RESISTANT HEAD, AIR FLANGE Z SHOWER DRAIN	2'	1 1/2"	1/2"	1/2"	WHITE
U-1	URINAL, AMERICAN STANDARD TRIMBROOK, 6561.017	FLUSH VALVE SLOW ROYAL 186, W/ VALVE SUPPORT	2'	1 1/2"	3/4"		
WC	TOILET, AMERICAN STANDARD NEW WATER SAVING 2812.053	SEAT - GLASSITE #95 OPEN FRONT LESS COVER	4'	2'	3/8"		



**Pearson & Associates**  
MECHANICAL & ELECTRICAL ENGINEERS  
P. O. BOX 610 STOWE, VERMONT 05672  
TEL. (802) 253-9607 FAX. (802) 253-9290

**CHEMETTE ENGINEERING, INC.**  
50 STATE STREET  
MONTPELIER, VERMONT 05602

DATE: \_\_\_\_\_ SCALE: AS SHOWN  
DRAWN BY: B.W.M. APPROVED BY: \_\_\_\_\_  
CAD FILE: PS-HA-M1  
SHEET: \_\_\_\_\_ OF \_\_\_\_\_  
DWG. NO. **M-1**

STATE OF VERMONT  
DEPARTMENT OF STATE BUILDINGS  
AGENCY OF ADMINISTRATION  
VERMONT  
MONTPELIER  
NEW AIRPORT HANGER #3  
HARTNESS STATE AIRPORT  
Springfield, Vermont  
MECHANICAL PLANS AND DETAILS