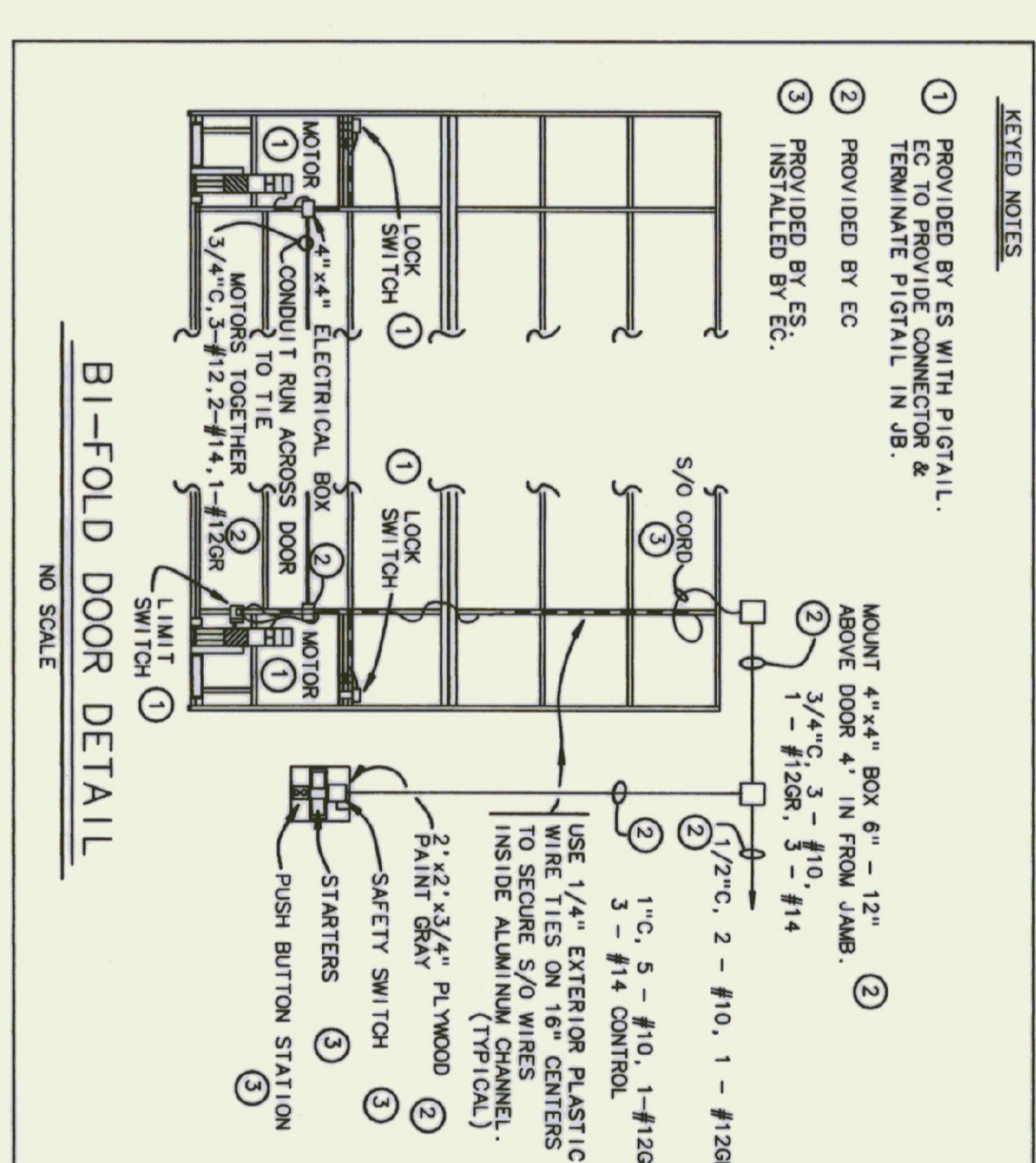


ELECTRICAL PLAN
SCALE - 1/8"=1'-0"

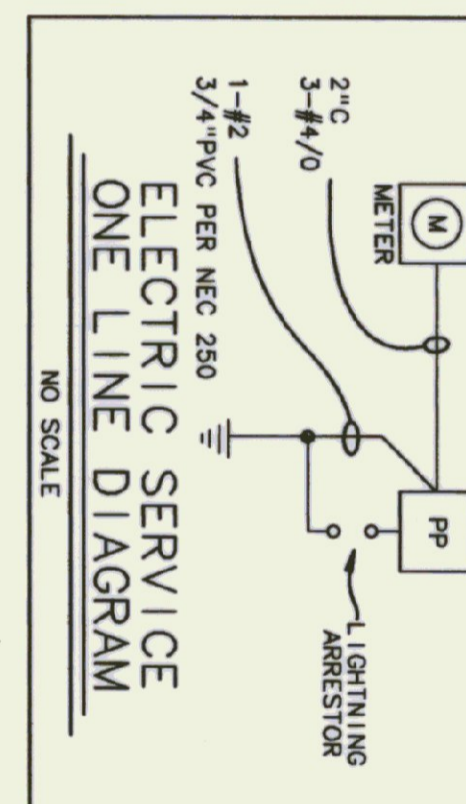
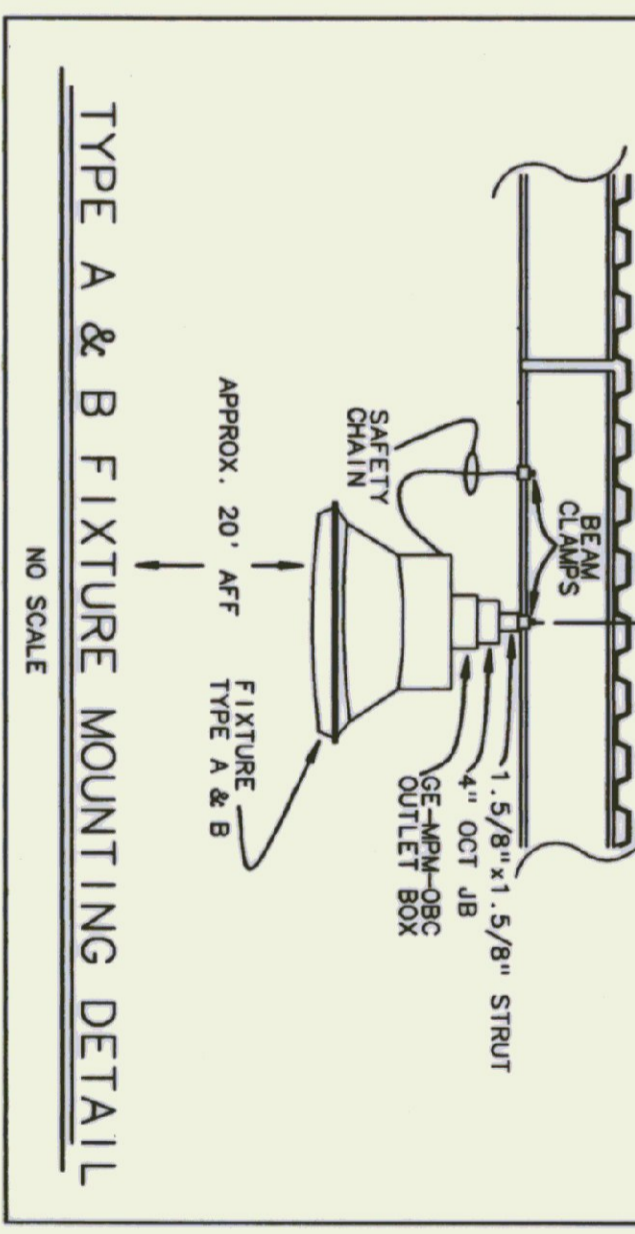
MEZZANINE
ELECTRICAL PLAN
SCALE - 1/8"=1'-0"

PANEL DESIGNATOR									
PANEL: PP MOUNTING: SURFACE MAINS: 150 AMP MAIN CIRCUIT BREAKER, 120/240 1-PHASE 3 WIRE CONNECTED LOAD: 77 KW									
NO.	RV	DESCRIPTION	P. AMP	AMP	BREAKER	DESCRIPTION	RV	NO.	DESCRIPTION
1	1.3	LIGHTS	1	20	1	20	1	4	2
3	1.3	LIGHTS	1	20	2	20	1	4	4
5	1.4	LIGHTS	1	20	2	20	1	1.5	4
7	9	LIGHTS	1	20	2	20	1	7.5	8
9	1.0	OUTLETS	1	20	1	20	1	10	10
11	1.0	OUTLETS	1	20	1	20	1	12	12
13	1.0	OUTLETS	1	20	1	20	1	12	14
15	9	OUTLETS	1	20	5	2	16	16	16
17	1.4	OUTLETS	1	20	1	20	1	18	18
19	7.5	WELDING OUTLET	2	50	20	1	20	20	20
21	3	HEATER OUTLET	2	20	20	1	20	22	24
23	3	HEATER OUTLET	2	20	20	1	20	22	24
25	-	SPACE	1	20	1	20	1	26	26
27	27	SPACE	1	20	1	20	1	28	28
29	29	SPACE	1	20	1	20	1	30	30
31	31	SPACE	1	20	1	20	1	32	32
33	33	SPACE	1	20	1	20	1	34	34
35	35	SPACE	1	20	1	20	1	36	36
37	37	SPACE	1	20	1	20	1	38	38
39	39	SPACE	1	20	1	20	1	40	40
41	41	SPACE	1	20	1	20	1	42	42

ELECTRICAL FIXTURE SCHEDULE					
KEY	MANUFACTURE & MODEL	MOUNTING	LAMPS	VOLT	REMARKS
A	GE - C8R 2551 ISTD16	SEE DETAIL	250 W. - HPS	120	SAFETY CHAIN
B	SAME AS A EXCEPT WITH AUTO SWITCHED QUARTZ	SEE DETAIL	250 W. - HPS	120	150 W QUARTZ LAMP
C	HIM HNS343100HP100D09P	WALL, SEE ARCH. ELEVATION	100W - HPS	120	EACH WITH SEPARATE PHOTOCELL CONTROL
D	HUGHES PHILIPS - 0820A1 RED SINGLE OBSTRUCTION LIGHT	3/4" RING 12" ABV. ROOF RIDGE	118 W. - LHT-18-125A210	120	18 CONDUIT ON EXT. WALL, 22 AFF.
FA	COLUMBIA WCR24A-ECOT	CEILING SURFACE	2 - TRC02-3500	120	
FB	COLUMBIA AMW20A-ECOT	CEILING SURFACE	2 - TRC02-3500	120	
FC	COLUMBIA CSR24A-ECOT	CEILING SURFACE	2 - TRC02-3500	120	
FD	COLUMBIA CSR24A-4-ECOT	CEILING SURFACE	4 - TRC02-3500	120	
FE	COLUMBIA CSR4A-ECOT	CEILING SURFACE	2 - TRC02-3500	120	
	LIGHTLUMENS - 2PT2VULH4	4" OUTLET BOX	2 - 12 WATT	12	10' AFF.
	LIGHTLUMENS - XEWRWFL	UNIVERSAL	2 - 7 WATT - FL.	120	12" ABOVE DOOR



LEGEND	
	LUMINAIRES
	FLUORESCENT LIGHT
	CEILING LIGHT
	WALL LIGHT
	EXIT LIGHT - WALL
	EMERGENCY LIGHT - DOUBLE HEAD
	WALL SWITCHES
	SWITCH + 50" AFF
	THREE WAY SWITCH
	FIREMATIC SWITCH - AT CEILING
	MANUAL MOTOR STARTER
	OIL BURNER SAFETY SWITCH
	SWITCH W/ PILOT LIGHT
	SWITCH - SPEED CONTROL
	WALL RECEPTACLES
	DUPLEX OUTLET - 42" AFF
	SPLIT WIRED DUPLEX OUTLET
	SINGLE SPECIAL PURPOSE OUTLET
	DUPLEX OUTLET - 450" AFF



SPECIAL PURPOSE OUTLET SCHEDULE											
KEY	DESCRIPTION	SUPPLIED BY	INSTALLED BY	CONDUCTOR & CAP. PROVIDED BY	ELECTRICAL REQUIREMENTS	AMPS	TYPE	STARTER PROVIDED BY	INSTALLED BY	ELECTRICAL DISCONNECT TYPE	REMARKS
1	OVERHEAD DOOR	GC	GC	-	-	120	10	ES	EC	20A - 1P	CONTROL WIRING BY EC
2	BI-FOLD DOOR	GC	GC	-	-	240	10	MC	EC	30A - 2P	CONTROL WIRING BY EC
3	INFRARED HEATER	MC	MC	EC	120	1.1	1-1	MC	EC	20A - 1P	CONTROL BY MC
4	THRU-WALL A/C & HEAT	MC	MC	EC	230	8	8	EC	EC	-	-
5	WATER HEATER	PC	PC	EC	120	12.5	-	EC	EC	-	-
6	EXHAUST FAN EF-2	MC	MC	EC	120	FHP	-	EC	EC	WALL \$	-
7	EXHAUST FAN EF-3	MC	MC	EC	120	FHP	-	EC	EC	WALL \$	-
8	WELDING OUTLET	EC	EC	EC	120	10	10	EC	EC	14-50R	-
9	HEATER OUTLET	EC	EC	EC	120/250	50	50	EC	EC	50" AFF	-
10	HEATER OUTLET	EC	EC	EC	250	20	20	EC	EC	50" AFF	-

MISCELLANEOUS EQUIPMENT	
	MOTOR STARTER
	SAFETY SWITCH
	PUSH BUTTON STATION
	ELECTRIC PANEL BOARD
	MOTOR
	TIME SWITCH
	BRANCH CIRCUIT
	ABOVE FINISHED FLOOR
	ELECTRICAL CONTRACTOR
	EQUIPMENT SUPPLIER
	GENERAL CONTRACTOR
	MECHANICAL CONTRACTOR
	PLUMBING CONTRACTOR
	GREEN MOUNTAIN POWER
	GROUND
	GALVANIZED RIGID CONDUIT
	JUNCTION BOX
	MOTOR OPERATED DAMPER
	MOTOR OPERATED LOWER
	TELEPHONE TERMINAL BOARD

Pearson & Associates
MECHANICAL & ELECTRICAL ENGINEERS
P. O. BOX 610 STOWE, VERMONT 05672
TEL. (802) 253-9607 FAX. (802) 253-9290

GF
CHENETTE ENGINEERING, INC.
50 STATE STREET
MONTPELIER, VERMONT 05602

STATE OF VERMONT
DEPARTMENT OF STATE BUILDINGS
AGENCY OF ADMINISTRATION
VERMONT

NEW AIRPORT HANGER #3
HARTNESS STATE AIRPORT
Springfield, Vermont
ELECTRICAL PLANS AND DETAILS

DATE: _____ SCALE: AS SHOWN
DRAWN BY: B.W.M. APPROVED BY: _____
REVISIONS: _____ CAD FILE: PS-HA-E1
SHEET: OF E-1

