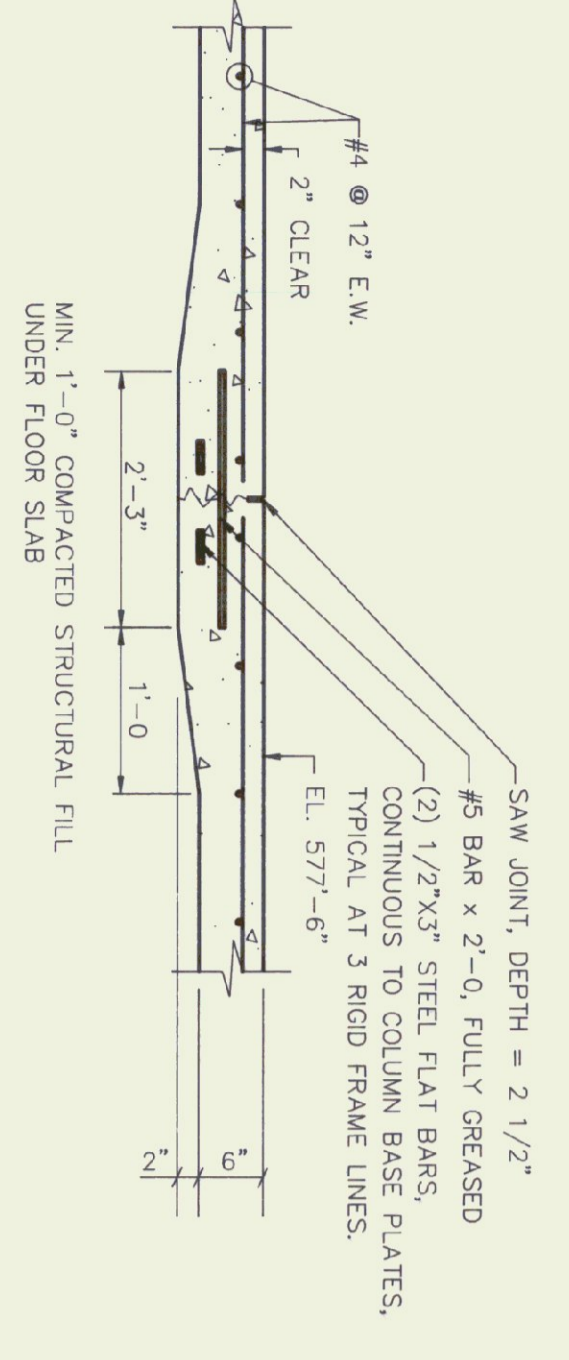
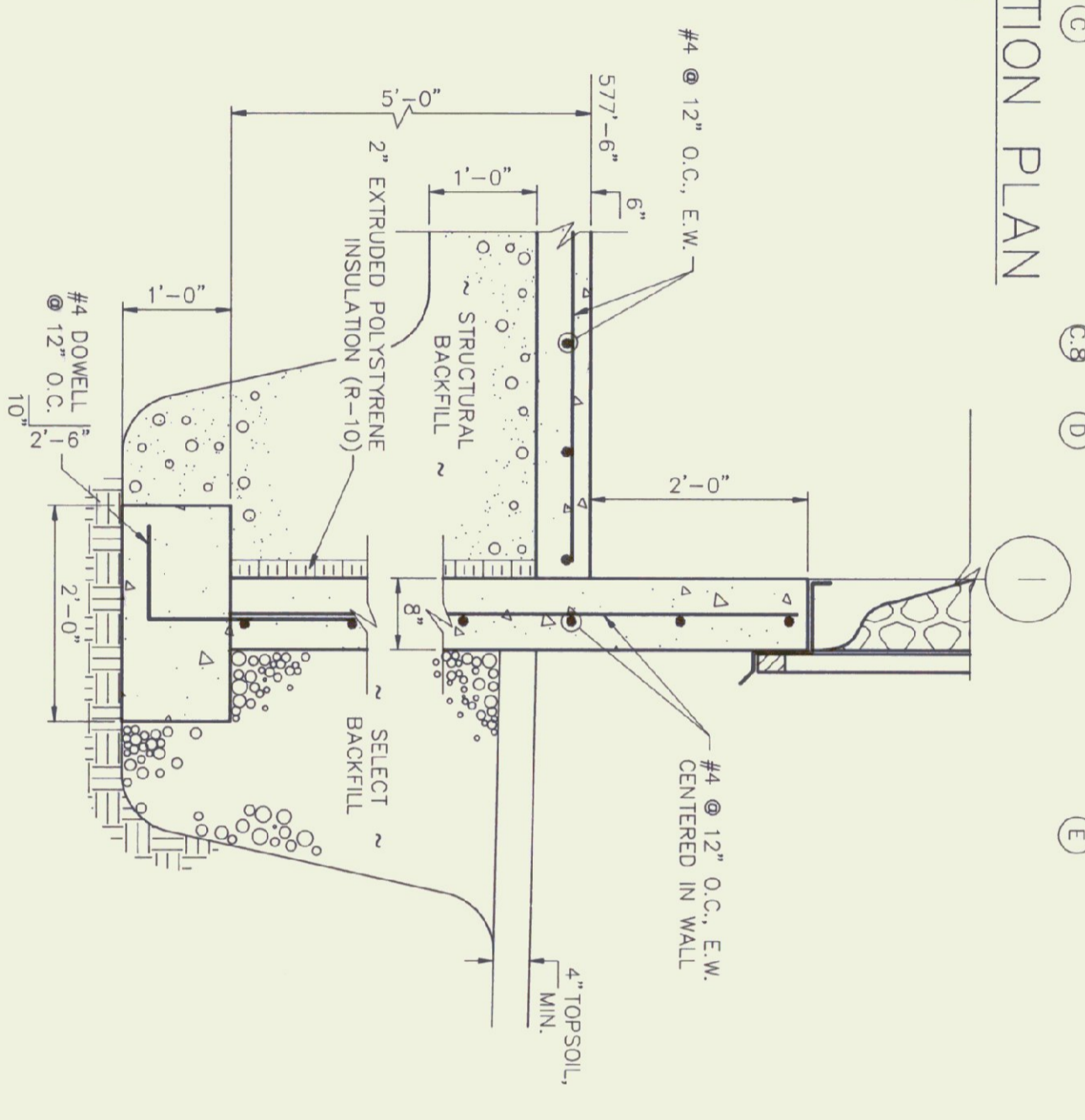


1. SLAB-ON-GRADE TO BE 6" THICK REINFORCED WITH #4 @ 12" E.W.
 2. ELEVATION TOP OF FOOTING = 577'-6" UNLESS OTHERWISE NOTED.

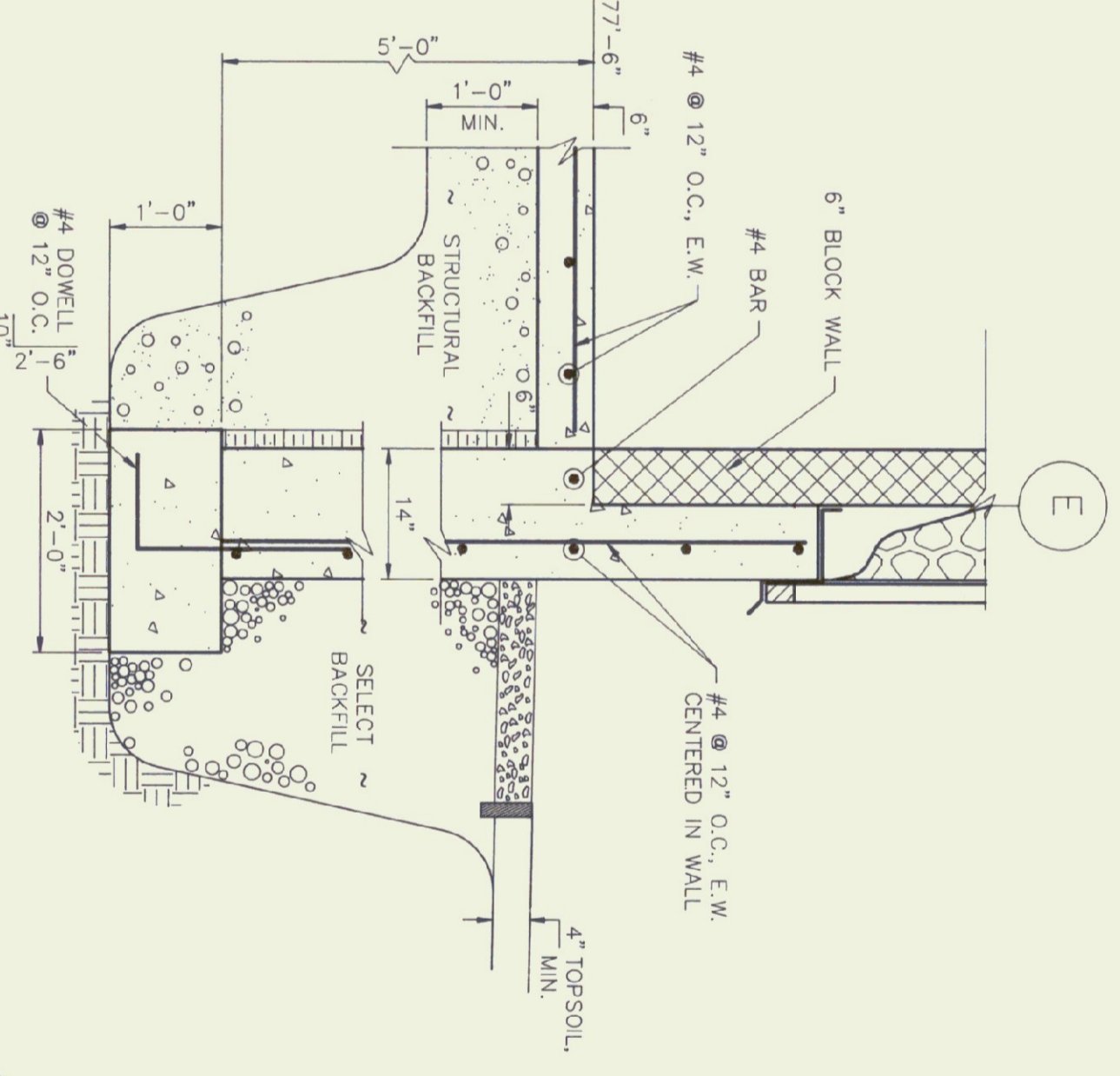
MARK	SIZE	FOOTING SCHEDULE	REINFORCING	REMARKS
F1	5'-6" x 5'-6" x 1'-3" DEEP	#6'S @ 12" O/C E.W. (B01)		
F2	4'-6" x 4'-6" x 1'-0" DEEP	#6'S @ 12" O/C E.W. (B01)		
F3	3'-6" x 3'-6" x 1'-0" DEEP	#5'S @ 12" O/C E.W. (B01)	END - WALL FOOTING	



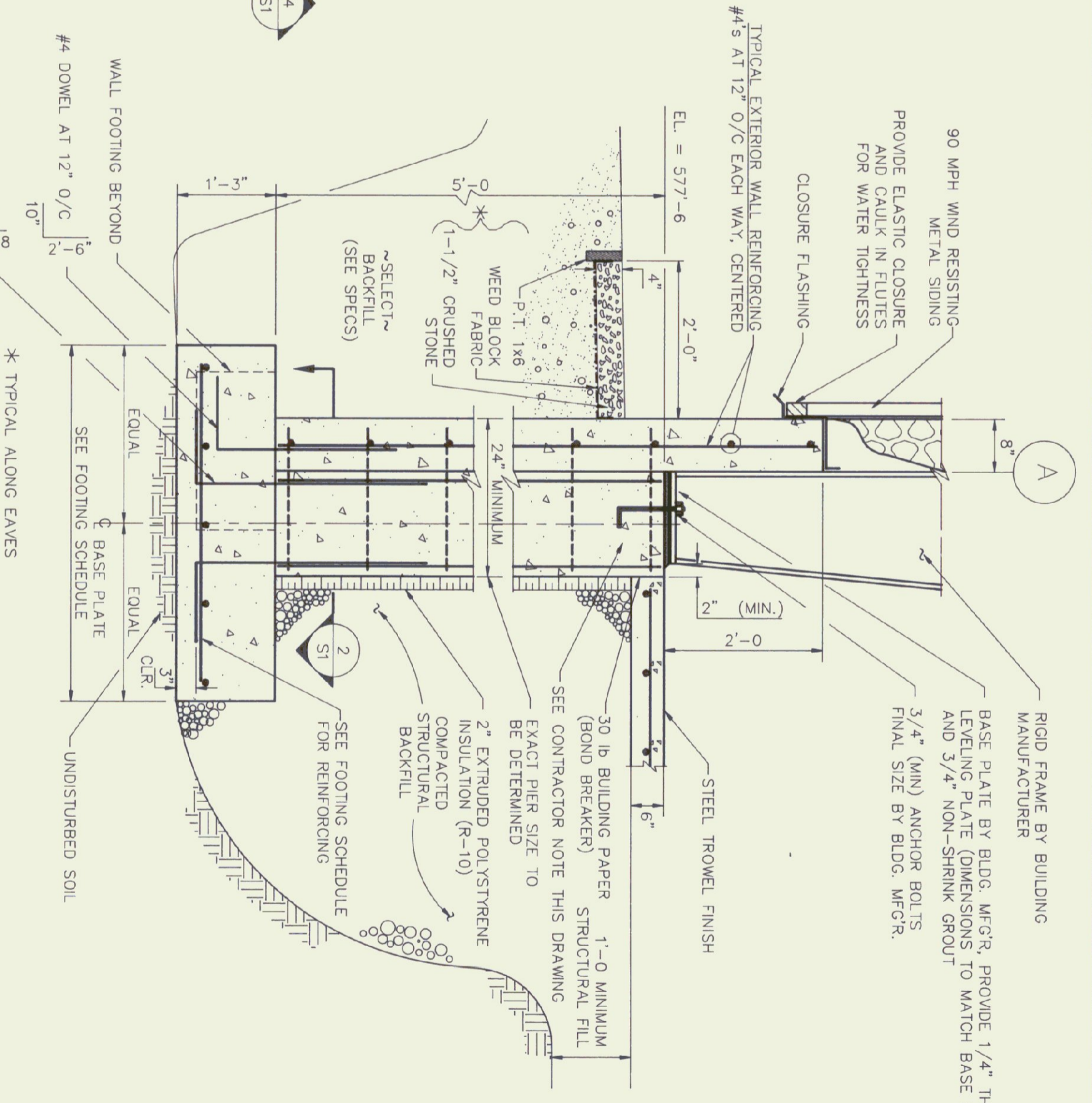
SECTION 6
 TYPICAL CONTROL JOINT AT RIGID FRAME LINES
 SCALE: 3/4" = 1'-0"



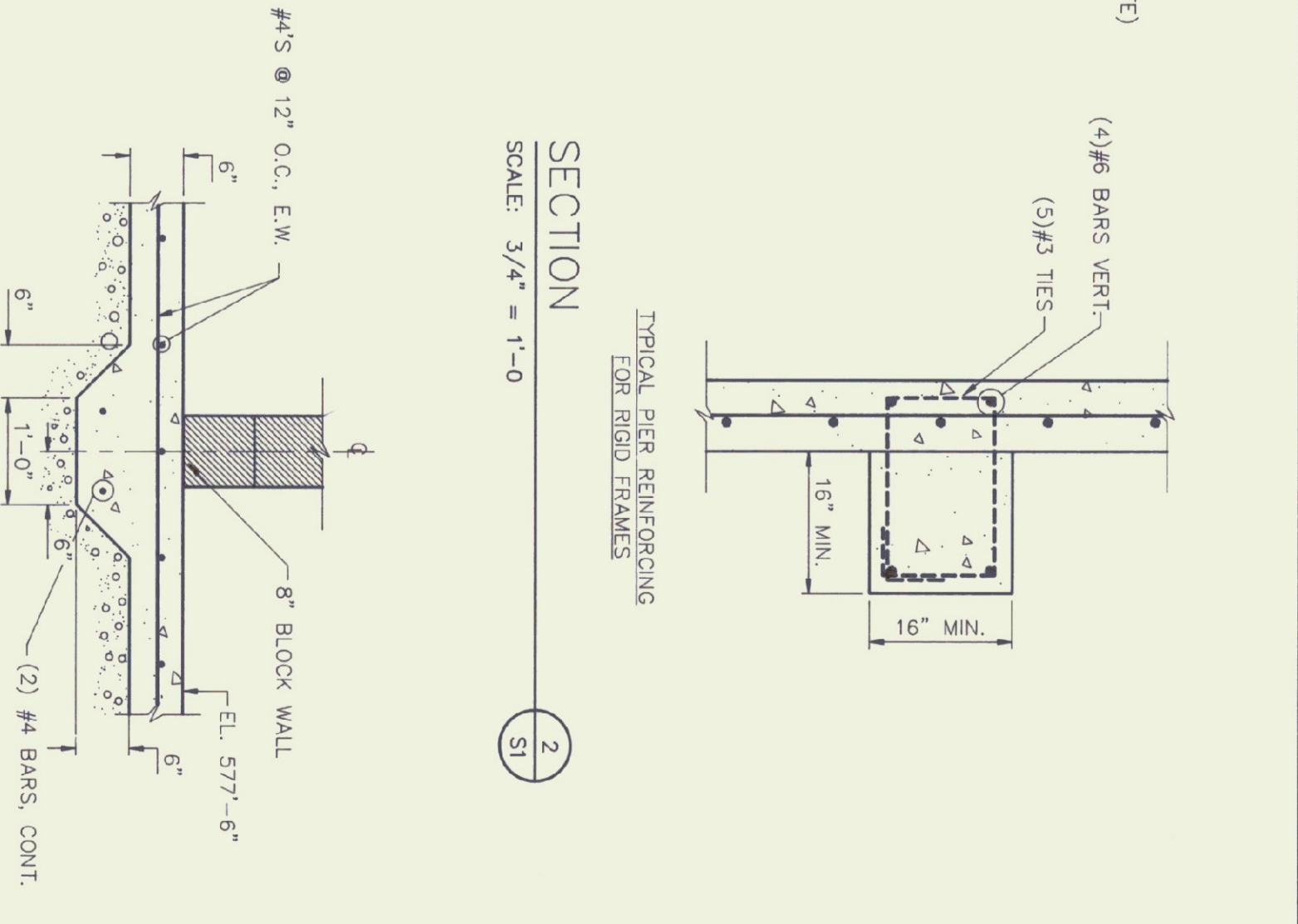
SECTION 3
 THROUGH FOUNDATION WALL
 SCALE: 3/4" = 1'-0"



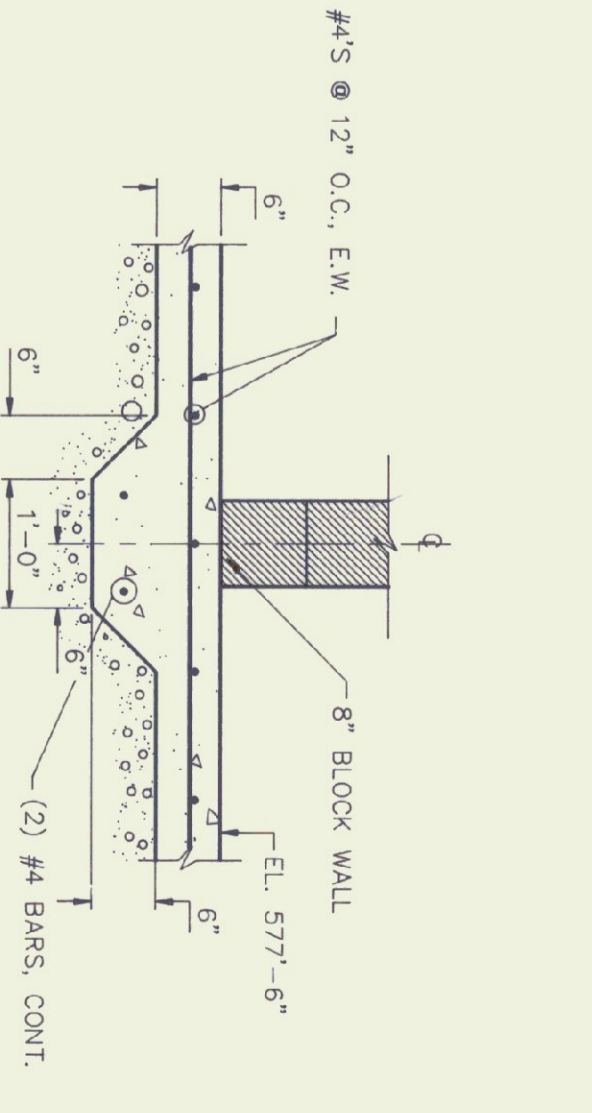
SECTION 4
 THROUGH THICKENED FOUNDATION WALL
 SCALE: 3/4" = 1'-0"



SECTION 1
 THROUGH SLAB FOOTING @ BLOCK WALL
 SCALE: 3/4" = 1'-0"



SECTION 2
 THROUGH PIER REINFORCING FOR RIGID FRAMES
 SCALE: 3/4" = 1'-0"



SECTION 5
 THROUGH SLAB FOOTING @ BLOCK WALL
 SCALE: 3/4" = 1'-0"

CONTRACTOR NOTE:
 THE FOUNDATION DESIGN SHOWN ASSUMES TYPICAL FOUNDATION LOADS FROM A METAL BUILDING OF THIS TYPE. ACTUAL PIER AND FOOTING SIZES MAY HAVE TO BE REDESIGNED BASED UPON THE CONTRACTOR'S SITE SURVEY. THE CONTRACTOR'S SITE SURVEY AND DESIGN SHOULD BE ADJUSTED TO ABSORB THESE POTENTIAL CHANGES.

PRELIMINARY
 NOT FOR CONSTRUCTION

Rev No	Date	Description	Made by	Checked by	App'd by

**NEW AIRPORT HANGAR #3
 HARTNESS STATE AIRPORT
 FOUNDATION PLAN AND DETAILS**

Sheet 5 of 8
 Scale AS NOTED
S1

CHENETTE ENGINEERING, INC.
 50 STATE STREET
 MONTPELIER, VERMONT 05602

DATE SEPT 1994
 Dwg 22-002-12

