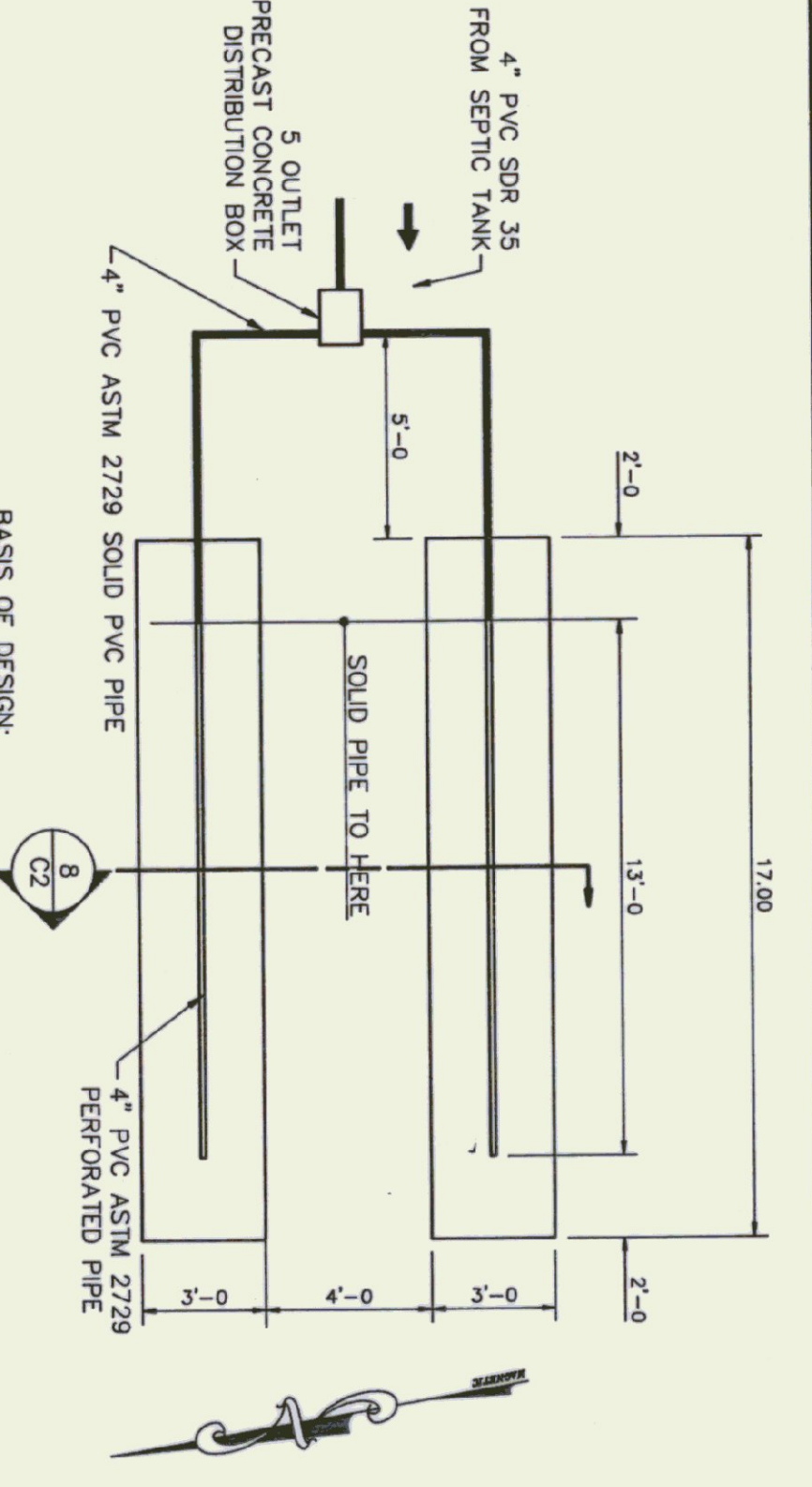
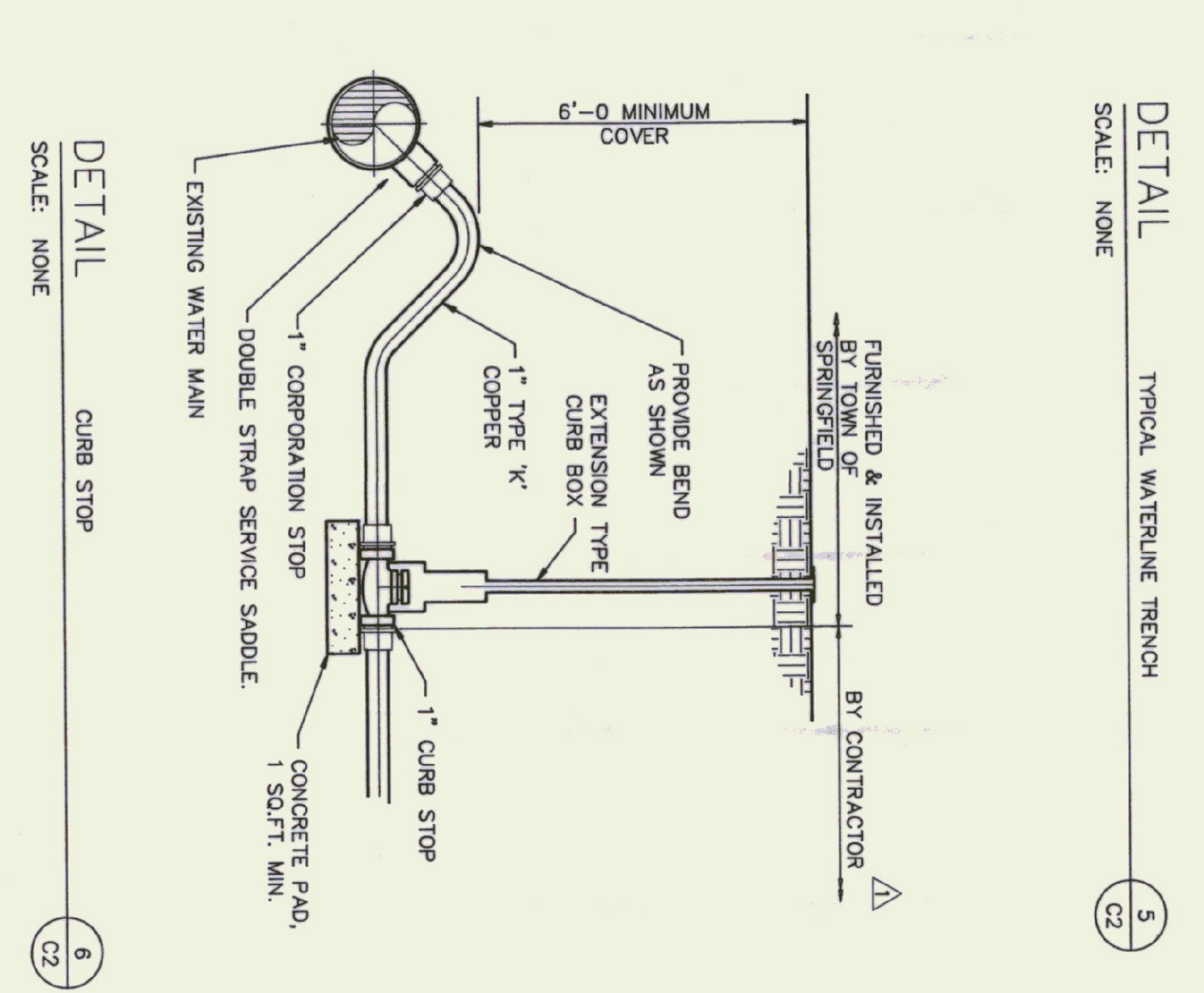
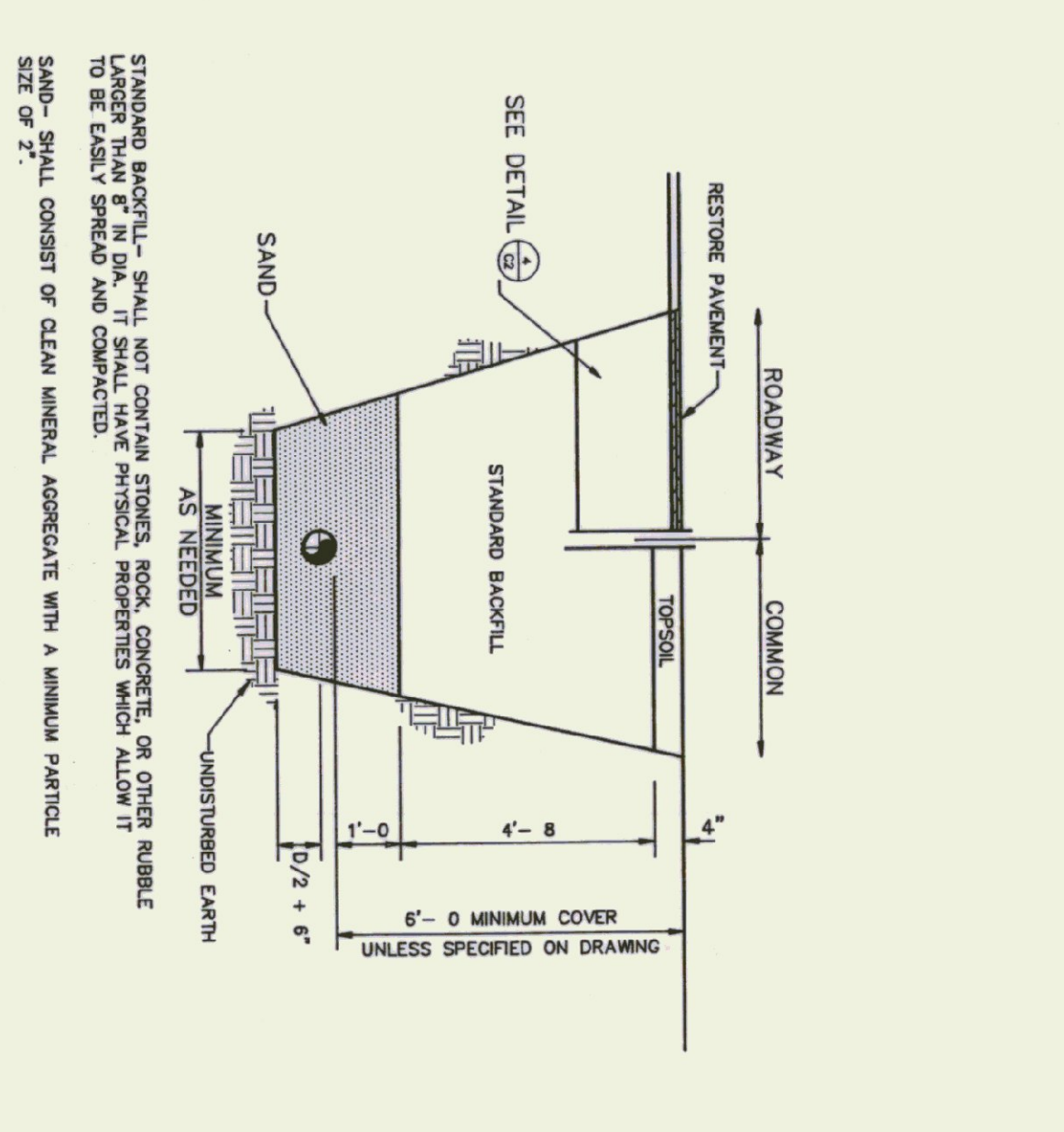
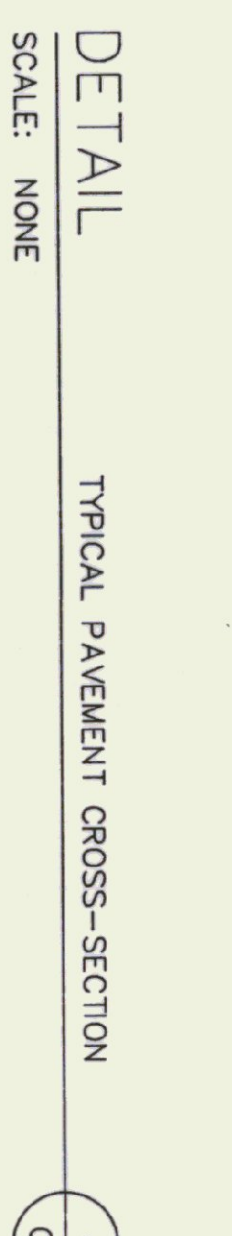
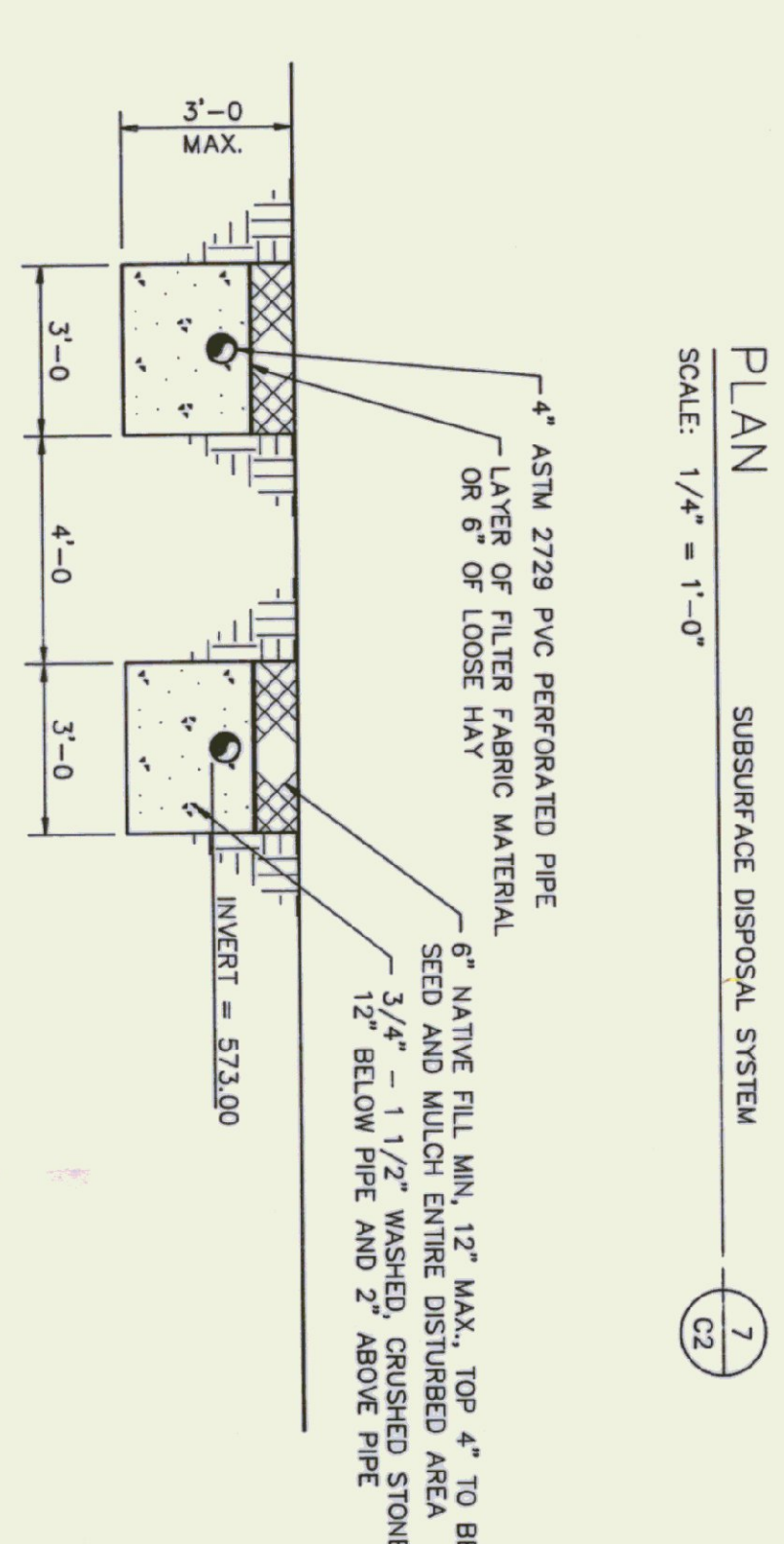


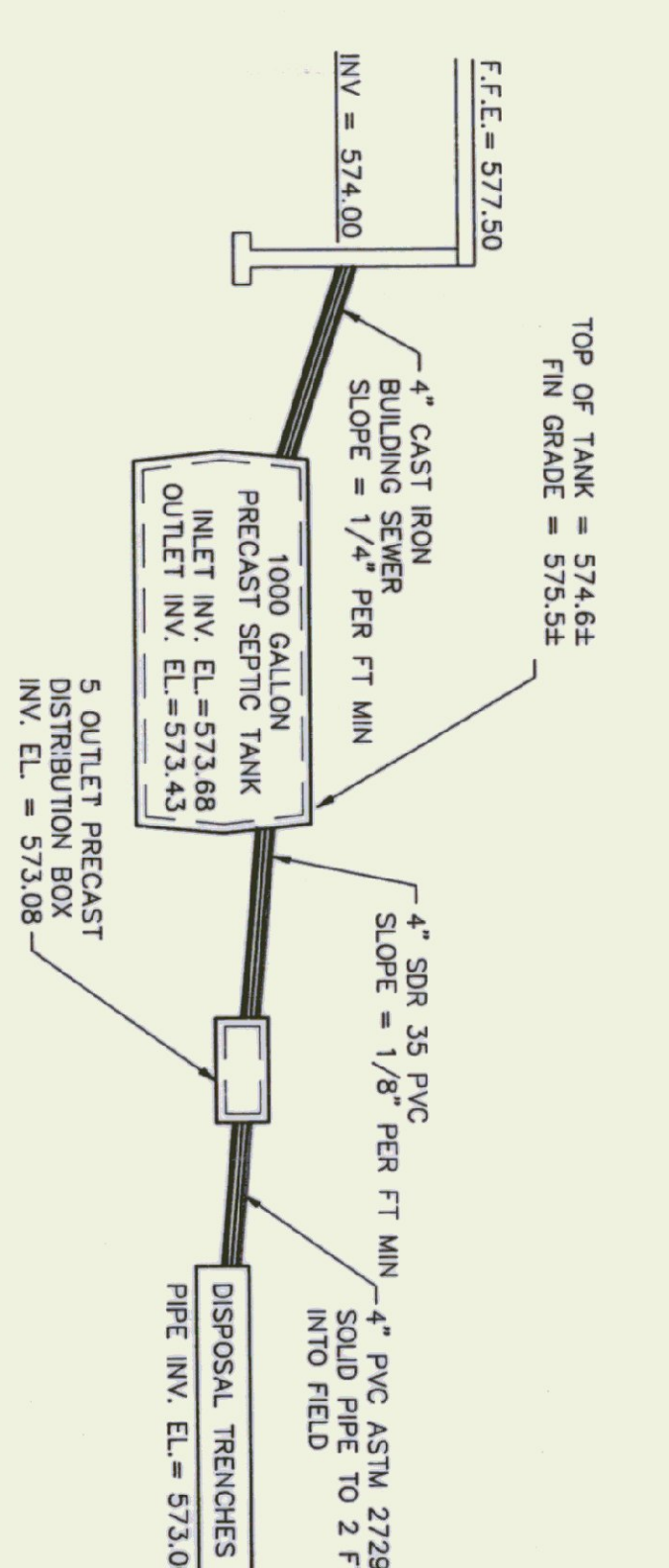
PAVEMENT AREA NOTES:
ITEM NUMBERS REFER TO VERMONT AGENCY OF TRANSPORTATION STANDARD SPECIFICATIONS FOR CONSTRUCTION.



BASIS OF DESIGN:
8 EXHAUSTERS x 15 GPD/EXHP = 120 GPD } = 150 GPD TOTAL
8 VISITORS x 5 GPD/VISITOR = 30 GPD }
PERCOLATION RATE = 1.0 MIN./IN.
APPLICATION RATE = 1.5 GAL/SF/DAY
150 GPD / 1.5 GAL/SF/DAY = 100SF
2 TRENCHES AT 3 FT WIDTH
100 SF / 3 FT / 2 TRENCHES = 33 LF
USE 2 TRENCHES AT 3 FT WIDE x 17 FT LONG = 102 SF



SECTION THROUGH DISPOSAL TRENCHES
SCALE: NONE



PROFILE HYDRAULIC PROFILE THRU SEPTIC SYSTEM
SCALE: NONE

SEPTIC SYSTEM CONSTRUCTION NOTES:

1. THE DISTRIBUTION BOX SHALL BE PRECAST CONCRETE SET LEVEL AND ARRANGED SO THAT EFFLUENT IS EVENLY DISTRIBUTED TO EACH DISTRIBUTION LINE. ADEQUATE PROVISIONS SHALL BE TAKEN TO ASSURE STABILITY AND PROVIDE ACCESS FOR INSPECTION OF THE DISTRIBUTION BOX. INSTALL FLOW EQUALIZERS AS MANUFACTURED BY S&I, INC. OR APPROVED EQUAL WHERE DISTRIBUTION PIPING LEAVES DISTRIBUTION BOX.
2. EACH DISTRIBUTION LINE SHALL CONNECT INDIVIDUALLY TO THE DISTRIBUTION BOX AND EXIT AT THE SAME SLOPE FOR THE FIRST 5 TO 10 FEET FROM THE BOX.
3. THE PIPE CONNECTING THE DISTRIBUTION BOX TO THE DISTRIBUTION LINES SHALL BE OF A TIGHT JOINT CONSTRUCTION LAID ON UNDISTURBED EARTH OR PROPERLY BEDDED MATERIAL THROUGHOUT ITS LENGTH.
4. WHEN THE TRENCHES HAVE BEEN EXCAVATED, THE SIDES AND BOTTOM SHALL BE REINFORCED AND PROTECTED FROM SURFACES AND THE LOOSE MATERIAL REMOVED. CONSTRUCTION EQUIPMENT NOT NEEDED TO CONSTRUCT THE SYSTEM SHOULD BE KEPT OFF THE AREA TO BE UTILIZED FOR THE ABSORPTION TRENCH SYSTEM TO PREVENT UNDESIRABLE COMPACTION TO THE SOILS. CONSTRUCTION SHALL NOT BE INITIATED WHEN THE SOIL MOISTURE CONTENT IS HIGH. (IF A FRAGMENT OF SOIL OCCURRING APPROXIMATELY 9" BELOW THE SURFACE CAN EASILY BE ROLLED INTO A MISE, THE SOIL MOISTURE CONTENT IS TOO HIGH FOR CONSTRUCTION PURPOSES.)
5. THE DISTRIBUTION LINE SHALL BE CAREFULLY PLACED ON THE BEDDING AT A UNIFORM SLOPE NOT EXCEEDING 1 TO 2 INCHES IN 100 FEET AND COVERED WITH AT LEAST 2 INCHES OF CRUSHED STONE. (SEE DETAIL.)
6. THE ENDS OF THE DISTRIBUTION PIPING SHALL BE CAPPED OR PLUGGED. THE ENDS ARE TO BE CONNECTED WITH THE SAME 4 INCH PVC PIPE IF THE LINES ARE ALL AT THE SAME ELEVATION.
7. SEPTIC TANK TO BE PRECAST CONCRETE. SEPTIC TANK TO HAVE ACCESS RISER TO GRADE AT THE CENTER OPENING WITH TIGHT FITTING EXPOSED COVER. INLET BAFFLE TO EXTEND 6 INCHES BELOW WATER LEVEL TO GRADE. INLET BAFFLE TO EXTEND 6 INCHES BELOW WATER LEVEL. MINIMUM (BUT LESS THAN OUTLET BAFFLE) AND OUTLET BAFFLES SHALL EXTEND TO A DEPTH EQUAL TO 40% OF LIQUID LEVEL. BAFFLES TO BE CONSTRUCTED OF EITHER PRECAST CONCRETE OR PVC SDR 35 TEES AND PIPE.



Rev No	Date	Description	Made by	Checked by	App'd by
Δ	9/8/94	CURB STOP CONTRACT LIMIT, TITLE	JIS	MJC	MJC

NEW AIRPORT HANGAR #3
MISCELLANEOUS DETAILS

CHENETTE ENGINEERING, INC.
50 STATE STREET
MONTPELIER, VERMONT 05602

Scale: NONE
Sheet 2 of 8

DESIGNED BY: JIS
CHECKED BY: MJC
DATE: JULY 94

Dwg 22-002-12