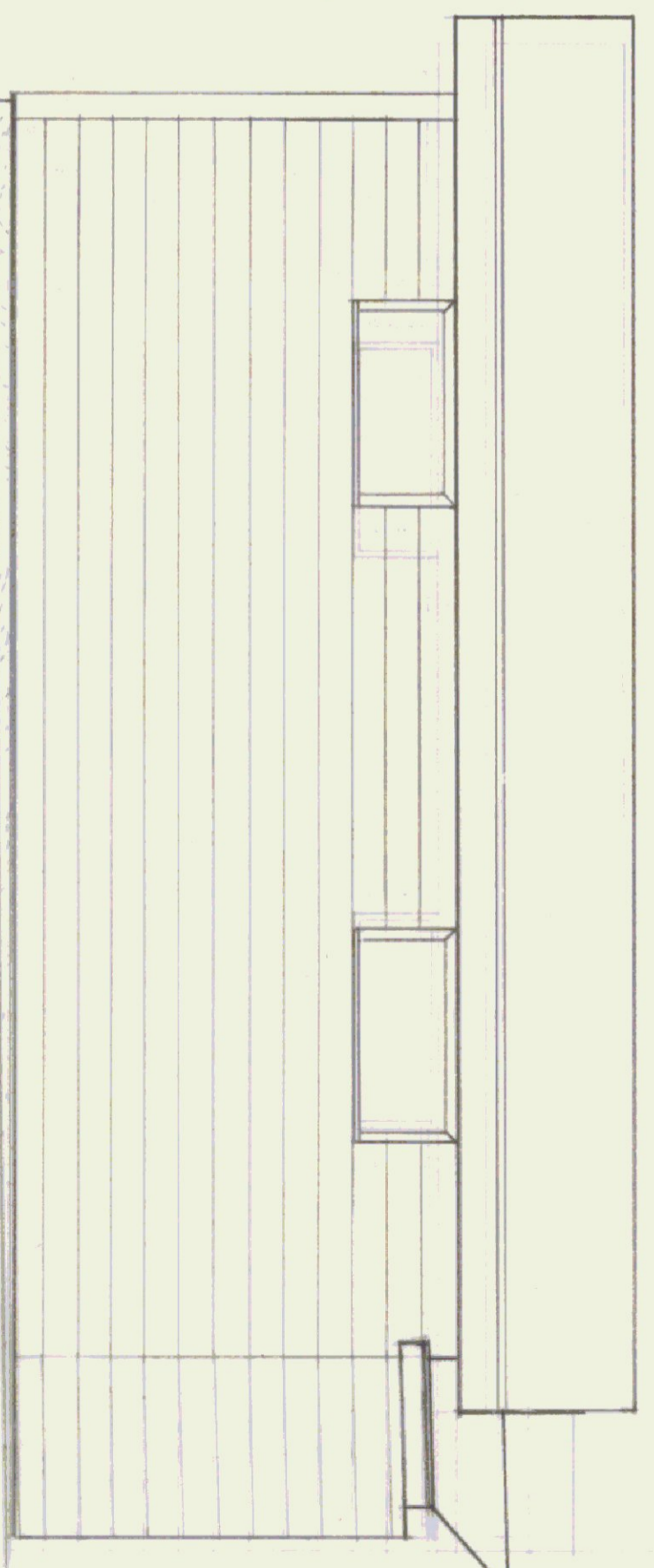
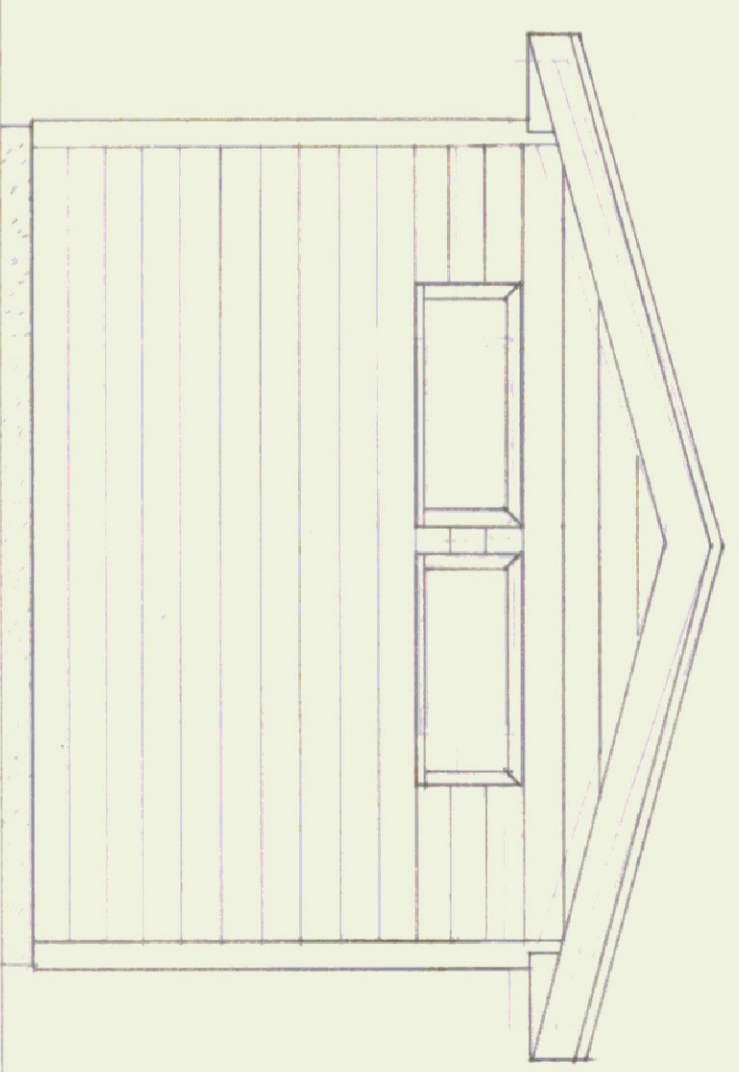
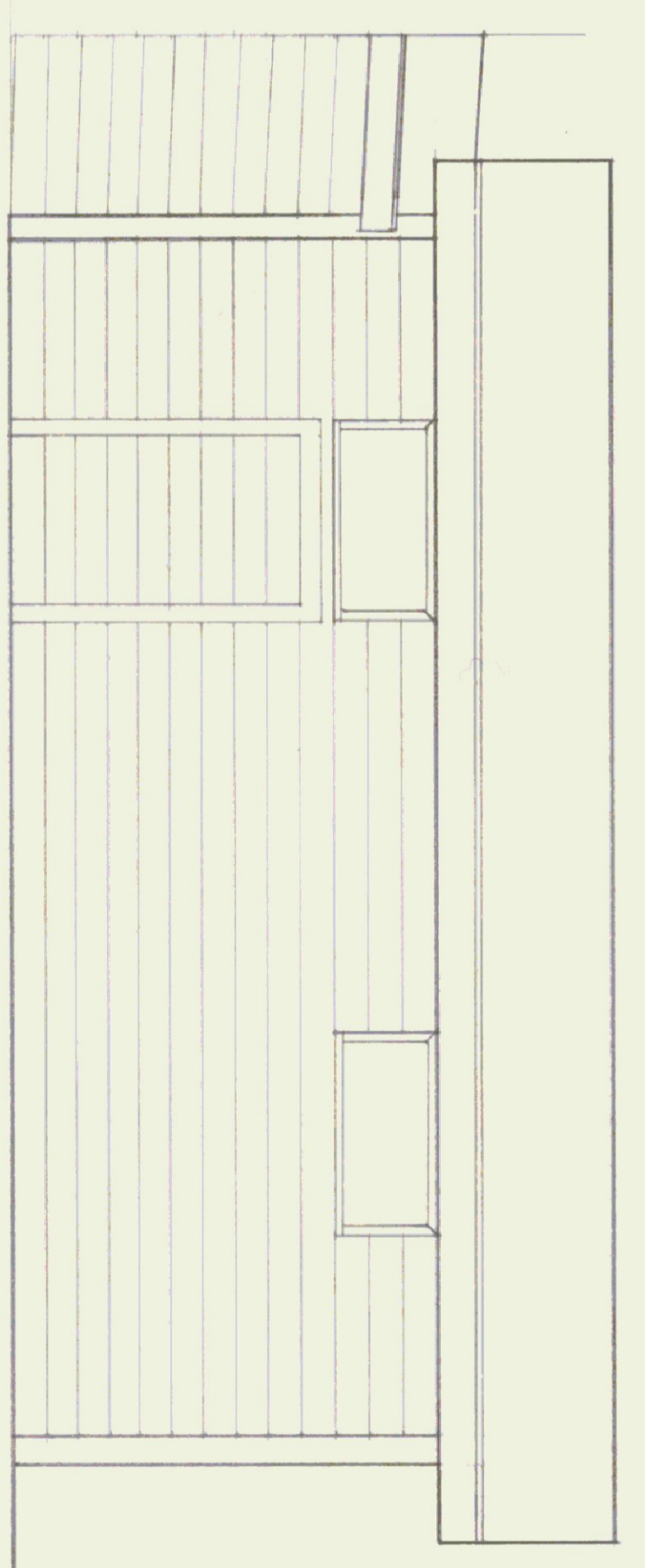
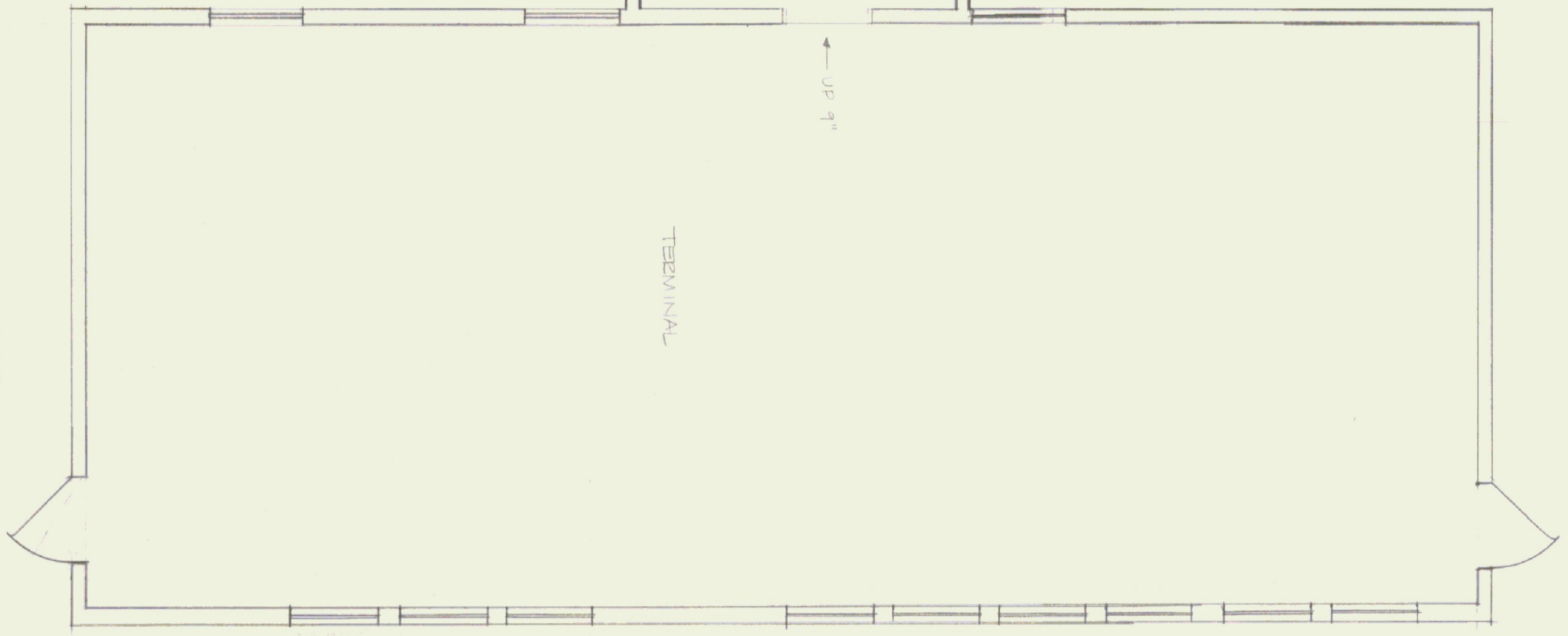


NOTES:

- 7'-0" CEILING HT. IN ADDITION
- 7'-1" " IN LINK UNIT
- 7'-11" " IN EXISTING TERMINAL

ALL OUTLETS ARE DUPLEX TYPE, 110V, MOUNTED AT 16" A.F.F.

CEILING INSULATION IN ADDITION IS 2" 6" FIBERGLASS
CEILING INSULATION IN LINK UNIT IS 2" 3" FIBERGLASS



DATE:	8.13.81	SCALE:	1/4" = 1'-0"	REVISIONS:	DWG. NO.
DRAWN BY:	HJ	APPROVED BY:			OF

STATE OF VERMONT
DIVISION OF STATE BUILDINGS
AGENCY OF ADMINISTRATION
MONTPELIER, VERMONT

AS-BUILT PLAN AND ELEVATIONS
ADDITION AND LINK TO SPRINGFIELD AIRPORT
SPRINGFIELD VERMONT