

**EMERGENCY LIGHTING SYSTEM**  
 Emergency Lighting System shall be powered with a Dual-Lite Series ED 12 Volt Lead Battery Unit. Exit Signs shall be Dual-Lite Double Sided Signs with Exit Building Mounting, 180V. 1/2" Capacity, and Downlight. Lights shall be Dual-Lite EXT-55 with Chrome Finish and Square Head Chrome Mounting Plates. Lighting System shall be capable of Main-Training Minimum Standards set by NFPA's Life Safety Code, and National Electric Code.



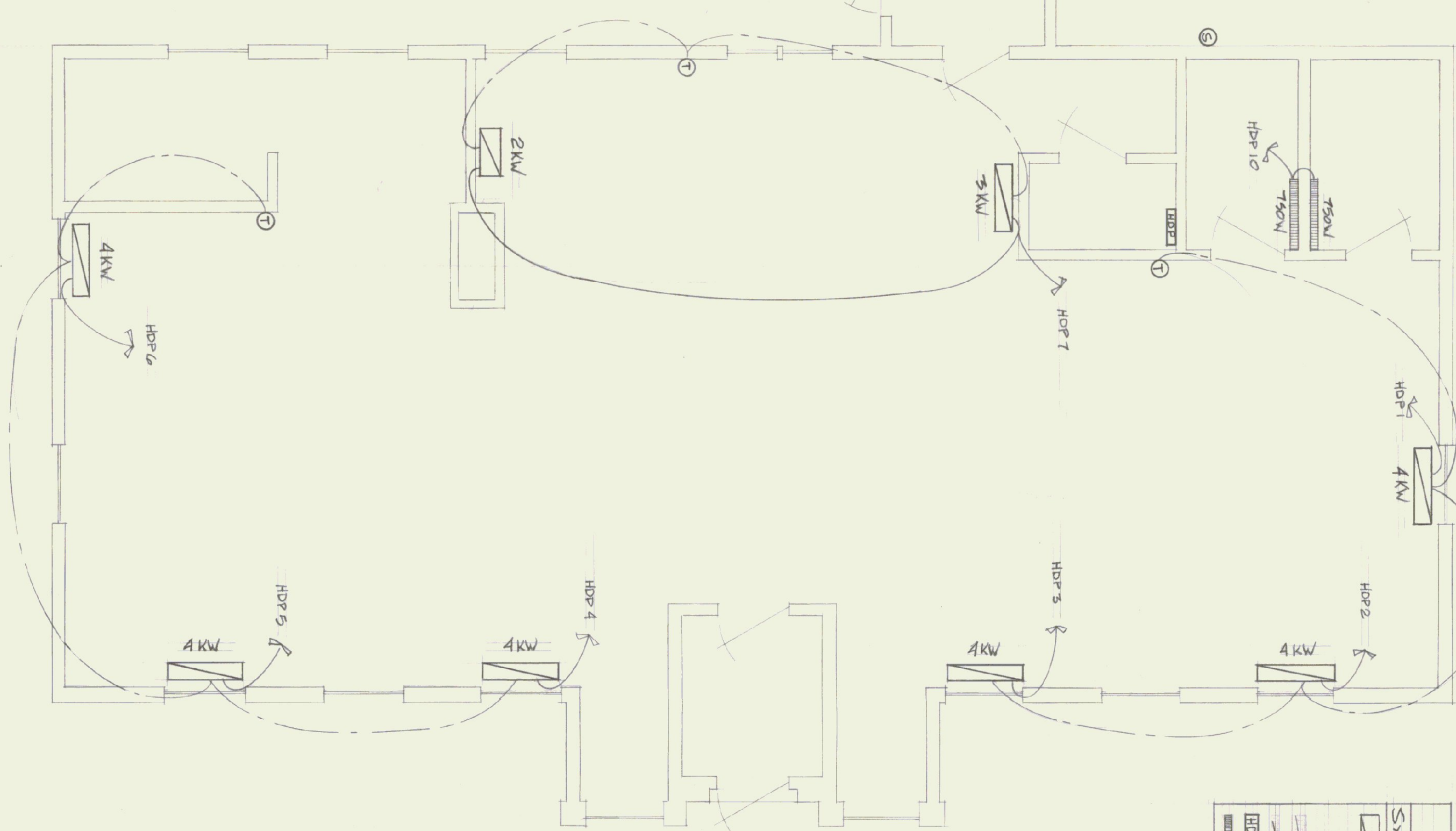
GENERAL ELECTRICAL PLAN

SYMBOL	DESCRIPTION	MANUFACTURER AND MODEL NUMBER	POSITION
S	Single Pole Switch		48" AFF
S3	3-WAY SWITCH		48" AFF
S4	4-WAY SWITCH		48" AFF
●	DINEX RECEPTACLE, 20A.		16" AFF
⊙	CLOCK RECEPTACLE		16" AFF
⊙	STANDARD DUBES, 20A.		48" AFF
⊙	2 1/2" L x 1 1/2" TUBE FUSE	LITONIA 245340 A12	See Schedule
⊙	2 1/2" L x 1 1/2" TUBE	LITONIA 245340 A12	See Schedule
⊙	INDUSTRY - GENERAL	RESISTANCE 1015HF-1	See Schedule
⊙	INDUSTRY - VENTILATE	RESISTANCE 2061WH	See Schedule
⊙	REST ROOM - FLOORHEAT	RESISTANCE WB-10	See Schedule
⊙	DUCTLESS FAN	ROSH-HAMPTON CA-90	See Schedule
⊙	MAIN DISTRIBUTION PANEL	WESTINGHOUSE Q228	54" AFF
⊙	HOT WATER HEATER	RIEHN, MOP 64-105	56" AFF
⊙	EMERGENCY LIGHTS BATTERY		56" AFF
⊙	EXIT SIGN		54" AFF
⊙	EMERGENCY LIGHT		54" AFF
⊙			54" AFF

Quant	Remarks	Equipment Served	Remarks
1	20	RECEPTACLES - DISPLAY AREA	
2	20	RECEPTACLES - LOBBY AREA	
3	20	RECEPTACLES - VENDING AREA	
4	20	RECEPTACLES - VENDING AREA	
5	20	RECEPTACLES - OFFICE AREA	
6	20	LIGHTING	
7	20	LIGHTING	
8	20	ELECTRIC HOT WATER HEATER	10 GAL 2,000 WATTS
9	20	EMERGENCY LIGHTING	
10	20	RECEPTACLES - REST ROOMS	
11	20	EXISTING BUILDING LIGHTS	
12	20	EXISTING BUILDING RECEPT.	
13-17	20	SPACES	
18	20	SPACES	
19-22	20	SPACES	

MAIN DISTRIBUTION PANEL - CIRCUIT BREAKER TYPE WESTINGHOUSE Q228, 120/240V, 1 1/2" x 1 1/2" x 1 1/2", 50A, 200A MAIN W/MAIN DISCONNECT, 24 POLE, 22,000 ILC

HEATING PLAN



4" RIGID INSULATED CONDUIT TO VENTILATION

METRIC BOX MOUNTED BY FORCE 46/280

4" PVC UNDERGROUND CONDUIT, 4" RIGID INSULATED CONDUIT SHALL BE USED TO RUN ALL METRIC AND BUILDING AND UNDERGROUND CONDUIT. ALL CONDUIT IN CONCRETE AT FOUNDATION.

SYMBOL	DESCRIPTION	MANUFACTURER AND MODEL NUMBER	POSITION
①	STORAGE HEAT UNIT w/ SIZE	AREA - TELEFUNKEN	48" AFF
②	TEMPERATURE SENSITIVE	AREA - TELEFUNKEN	48" AFF
③	TEMPERATURE SENSITIVE	AREA - TELEFUNKEN	48" AFF
④	HEATING DISTRIBUTION		54" AFF
⑤	HEATING HEAT UNIT	Chemtron RB-HI-35-2 w/ Rheonmont	54" AFF

Quant	Remarks	Equipment Served	Remarks
1-3	20	STORAGE HEATERS IN DISPLAY AREA	
4-6	20	STORAGE HEATERS IN LOBBY AREA	
7	30	STORAGE HEATERS IN OFFICE AREA	
8,9	20	STORAGE HEATERS IN EXISTING BUILDING	
10	20	RESTROOM HEATERS IN TOILETS	
11,12	20	SPACES	

STATE OF VERMONT  
 DIVISION OF STATE BUILDINGS  
 AGENCY OF ADMINISTRATION  
 MONTPELIER, VERMONT

ELECTRICAL PLAN  
 SPRINGFIELD STATE AIRPORT TERMINAL  
 VERMONT

DATE: MAY 23, 1981  
 SCALE: 1/4" = 1'-0"  
 DRAWN BY: HANSON  
 APPROVED BY: C.W.S.

REVISIONS:  
 DWG. NO. E-1  
 9 OF 9