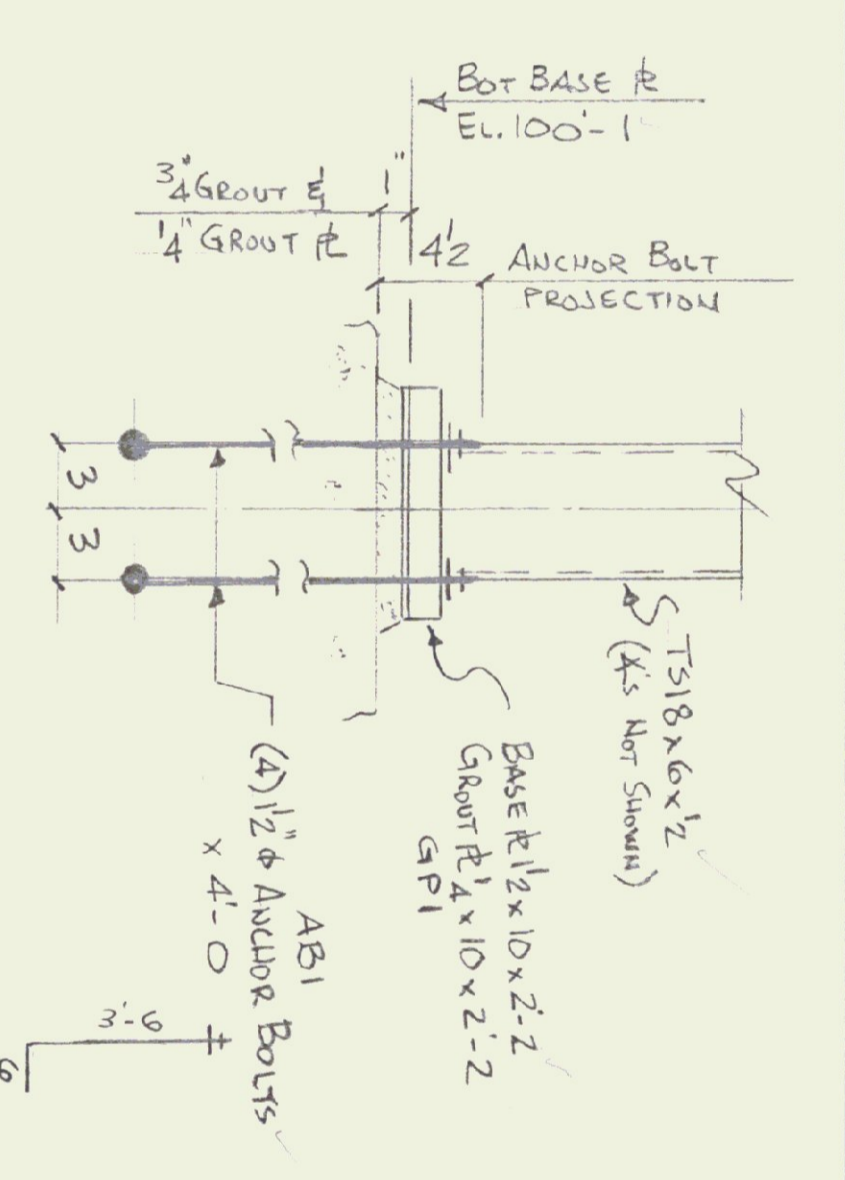
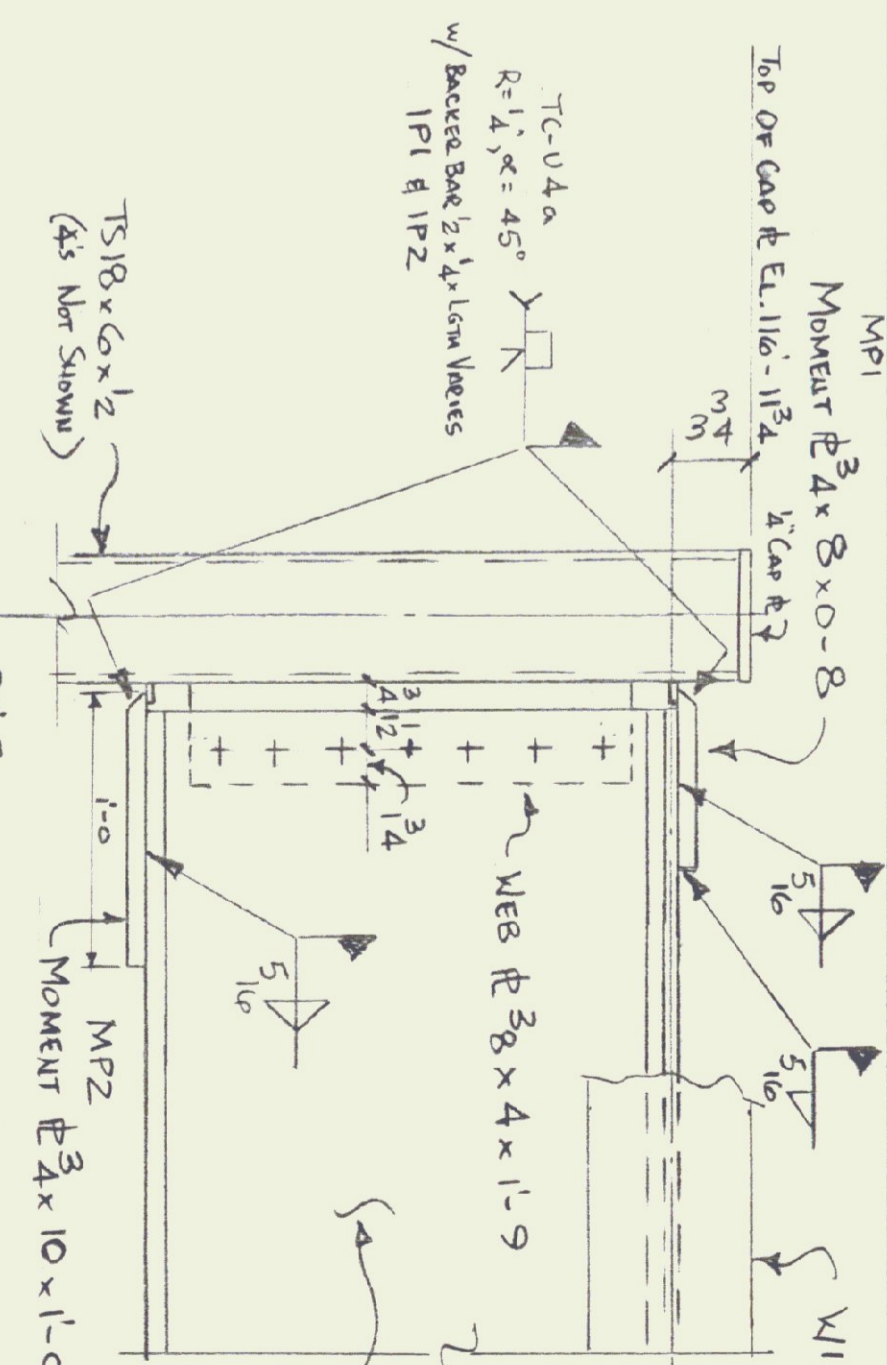


- FRAMING PLAN**
- 1) BOT OF BASE @ EL. 100'-1"
 - 2) @ OF W18x60 WEB EL. 116'-8"
 - 3) TOP OF W24x68 EL. 116'-7 3/4"
 - 4) TOP OF TS18x6 COL EL. 116'-11 3/4"



ANCHOR BOLT DETAIL A



ANCHOR BOLT DETAIL B

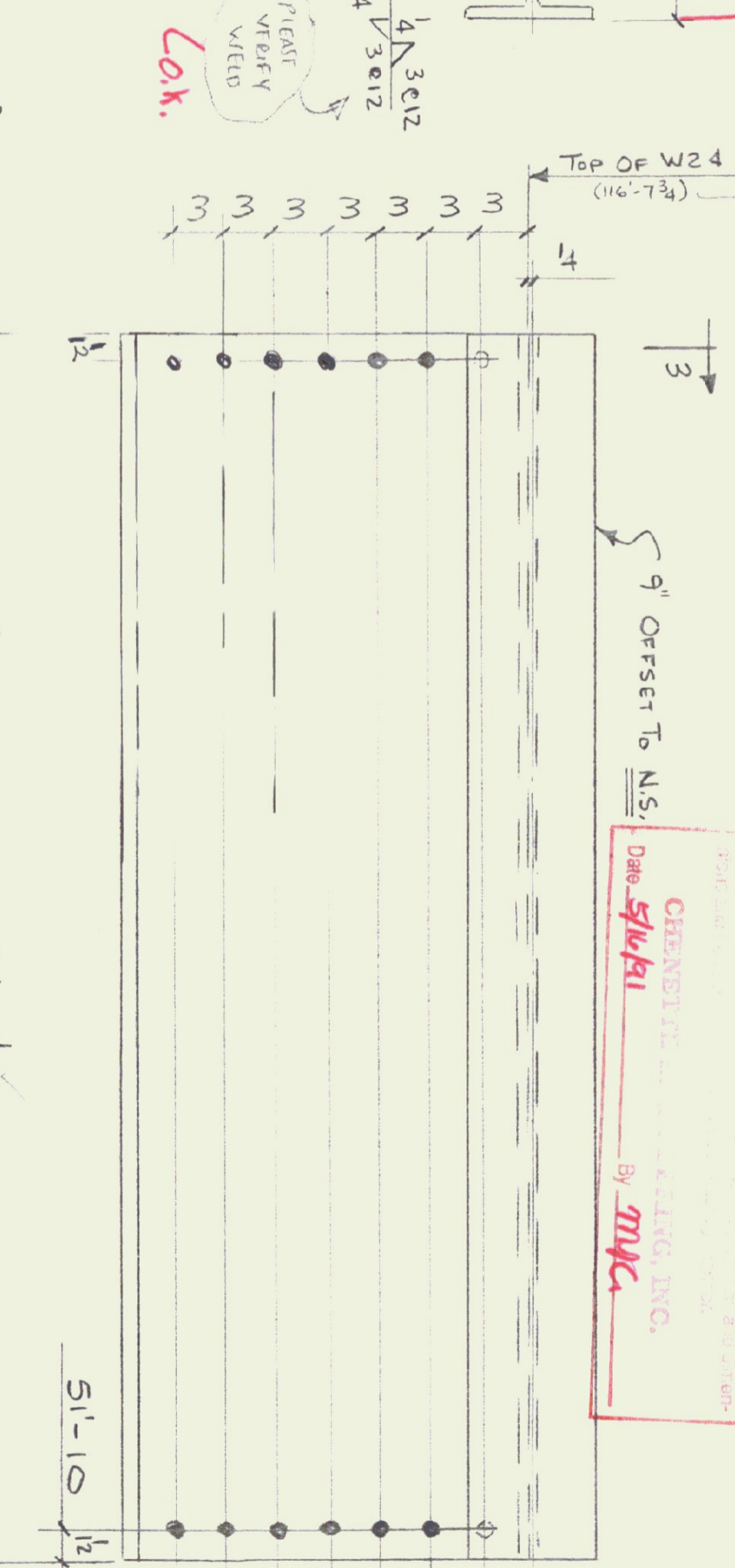
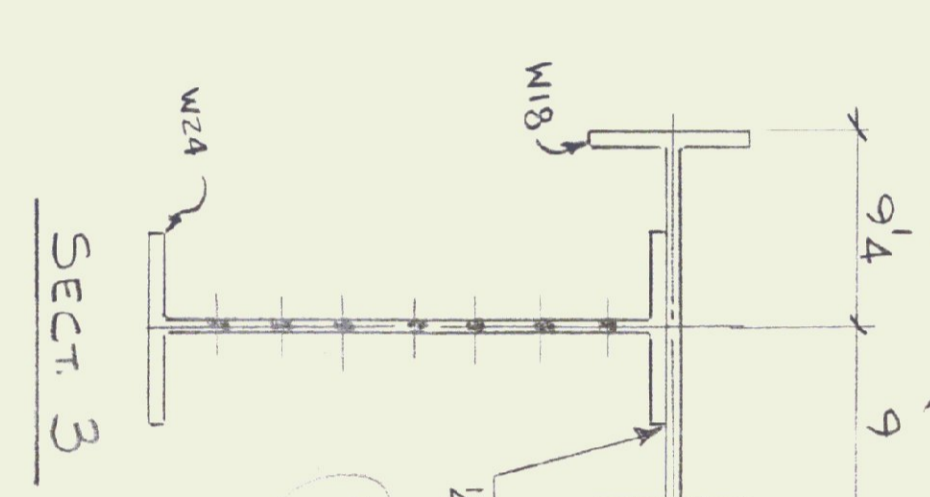
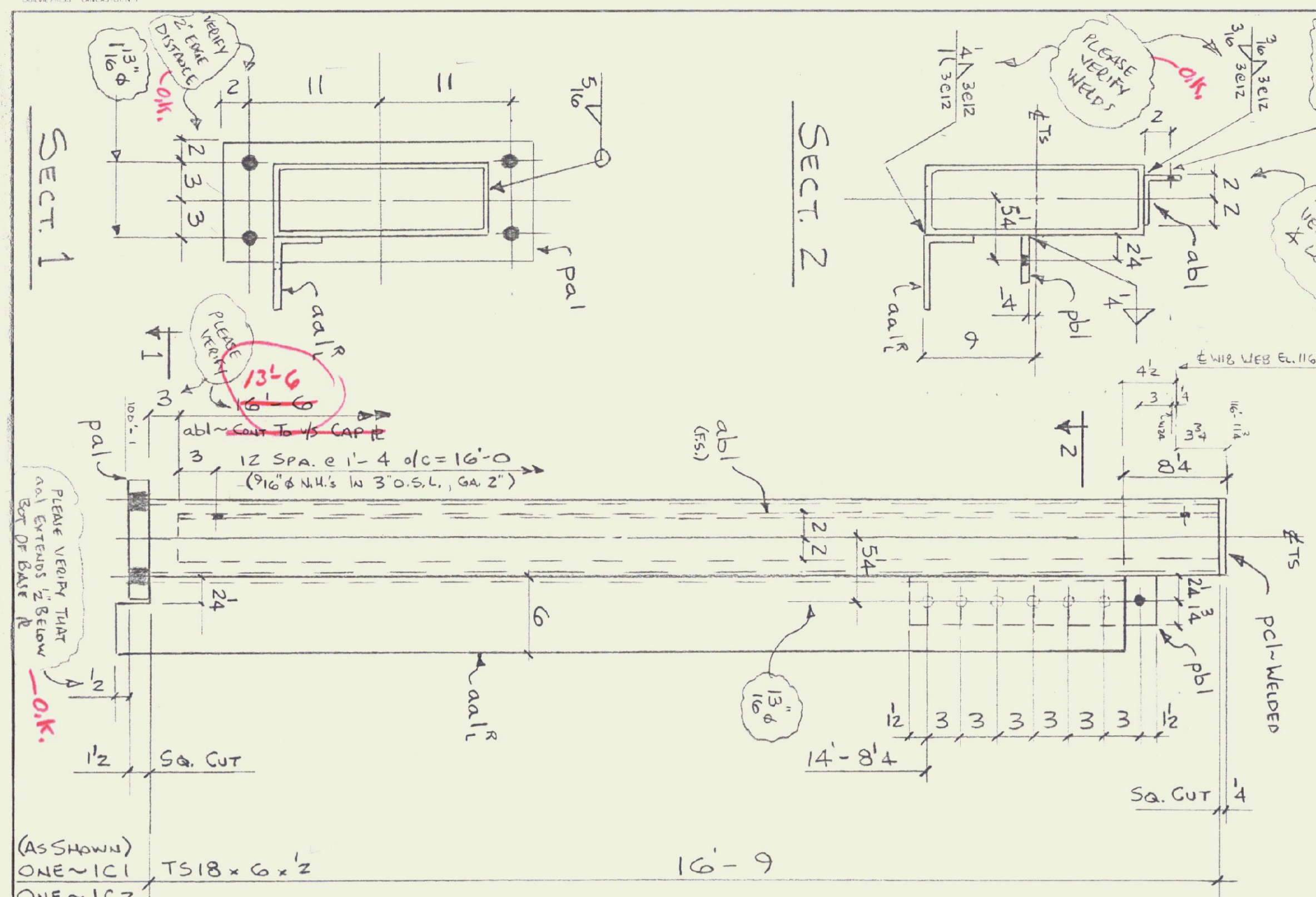
SHOP DRAWING REVIEW

DATE: 5/14/11 BY: *SLK/kl*

REVISIONS:

1	ADD TO REVISIONS
2	ADD TO REVISIONS
3	ADD TO REVISIONS
4	ADD TO REVISIONS

CHENETTE ENGINEERING, INC. BY: *mpc*



2 ~ ANCHOR BOLTS - ABI

2 ~ GROUT FTS - GPI

2 ~ TOP MOMENT FTS - MP1

2 ~ BOT MOMENT FTS - MP2

Bill of material

ONE	IC1	TS 18x6x1/2	SC2E	16'-9"
ONE	IC2	TS 18x6x1/2	SC2E	16'-9"
2	pal	PL 1/2 x 10	Z-2	1'-9"
2	pbl	PL 3/8 x 4	1-9	1'-9"
2	pcl	PL 1/4 x 6	1-6	1'-6"
2	aa1f	4x4x3/8	16'-8"	16'-8"
2	abl	4x3x3/16	16'-6"	16'-6"
ONE	IB1	W24x68	SI-11 1/2	SI-11 1/2
1		W18x60	SI-11 1/2	SI-11 1/2
8	ABI	1/2" ANCHOR BOLTS w/WASH	4'-0"	4'-0"
2	GPI	FT 4 x 10	2'-2"	2'-2"
2	MP1	FT 3/4 x 8	0'-8"	0'-8"
2	MP2	FT 3/4 x 10	1'-0"	1'-0"
3	IA1	4x3x3/4	20'-0"	20'-0"
2	IP1	BACKER BAE 1/2x1/4	0'-8"	0'-8"
2	IP2	BACKER BAE 1/2x1/4	0'-0"	0'-0"
14		FIELD BOLTS		
		3/4" A325 Bolt w/WASH	0'-2"	0'-2"

REVISION	DATE	DESCRIPTION

RELIANCE STEEL, INC.
CONCESTER, VT

DATE: 5-8-91 JOB NO: 986
DRAWN BY: *TE*
APPROVED BY: *TE*

HANGER DOOR, HAETWESS STRATE AIRPORT
SPRINGFIELD, VT.

CUST: CHENETTE ENGINEERING, INC.
DRAWING NUMBER: *1*

PAINT: (1) SLK TRAFAC 10-99 REP w/ "No Paint"
MIN 2 MILS DIFT

ENG. 2:2
PLEASE VERIFY WELDS & ALL SIZES & FIELD IN DETAIL B

5/16 4.42 4.42 4.42 4.42

CONTR 23x3x1/4 (A1):
SHOULD SUPPORT AS ABOVE, NOT SHOWN
SHOULD BE 20'-0" LONG
LOCATE, CON, & ATTACH TO BACKLUG
AS READ IN FIELD
(REF. EWB Dwg. 52 SECT 1)