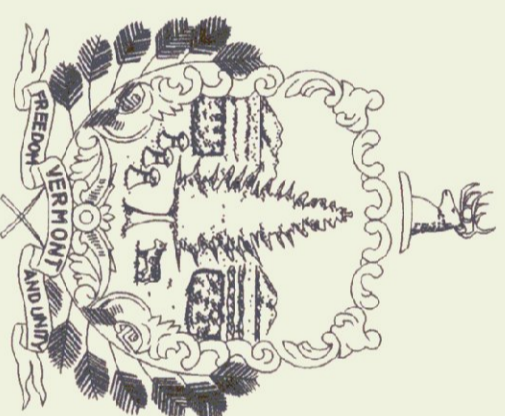


State of Vermont
Department of State Buildings and General Services

HARTNESS AIRPORT
NEW HANGAR #23
Springfield, Vermont

AGENCY OF ADMINISTRATION
DEPARTMENT OF STATE BUILDINGS AND GENERAL SERVICES
2 GOVERNOR AIKEN AVENUE
MONTPELIER, VERMONT 05633-5801
JOHN J. ZAMPIERI, COMMISSIONER



Howard Dean, M.D.
Governor

June, 1996

ENGINEERS:

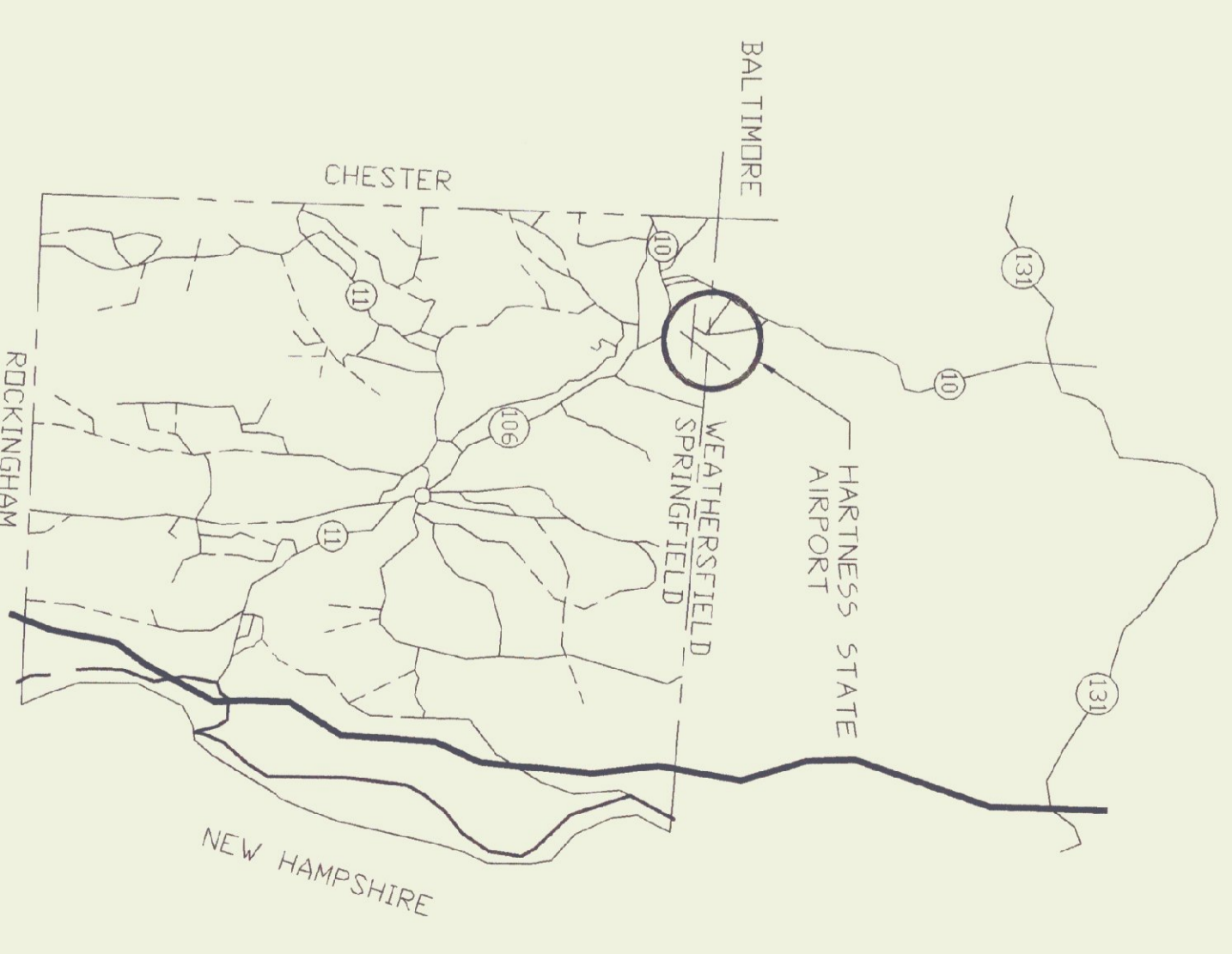
Provan & Lorber, Inc.
Engineers and Planners
7 Main Street
Montpelier, Vermont 05602

Pearson & Associates
Mechanical & Electrical Engineers
P.O. Box 610
Stowe, Vermont 05672

INDEX OF SHEETS

P-1	SITE PLAN
S-1	FLOOR PLAN & ELEVATIONS
S-2	FOUNDATION PLAN & DETAILS
S-3	ROOF FRAMING PLAN & DETAILS
D-1	MISC. DETAILS
D-2	DEMOLITION PLAN
E-1	ELECTRICAL PLAN

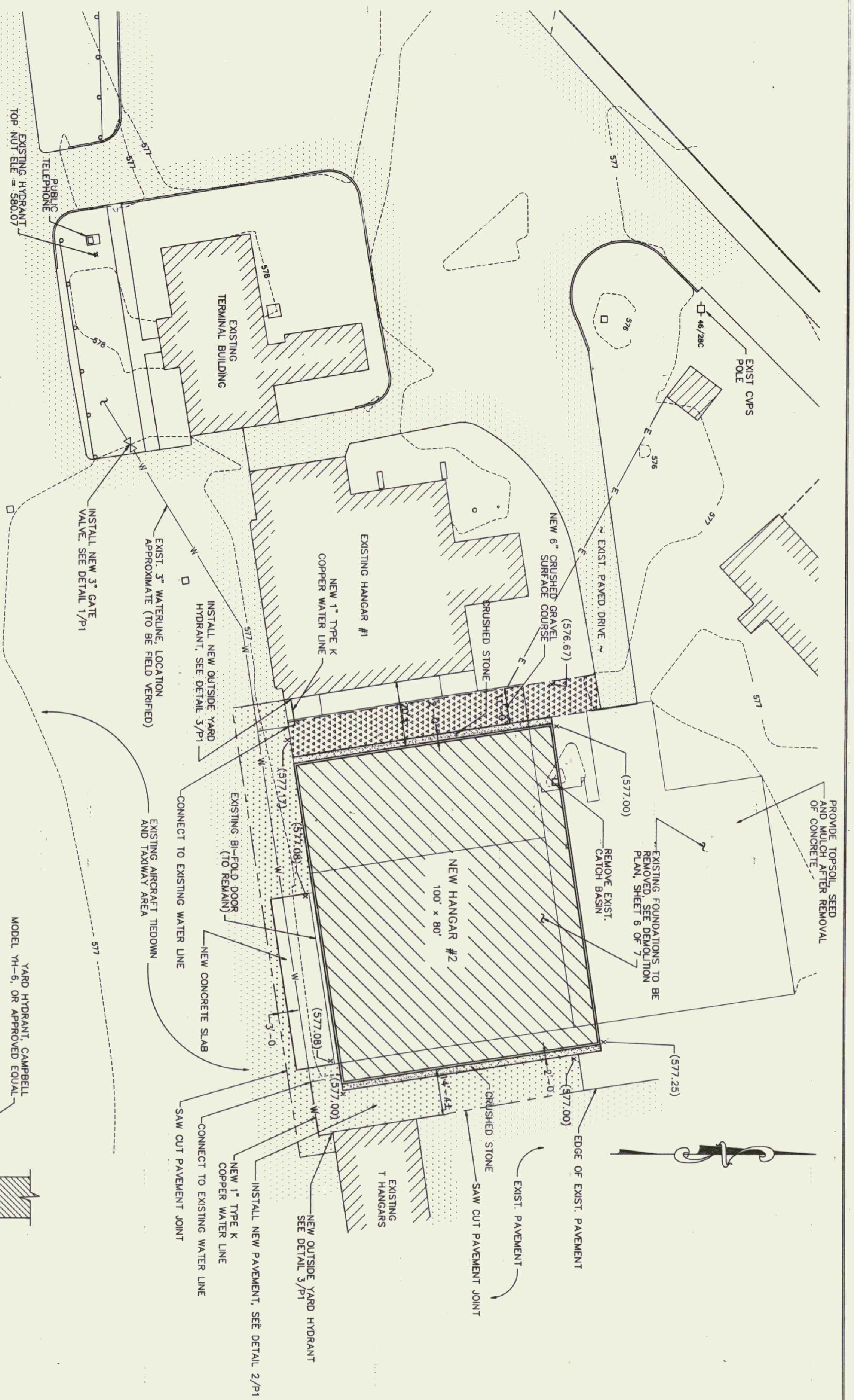
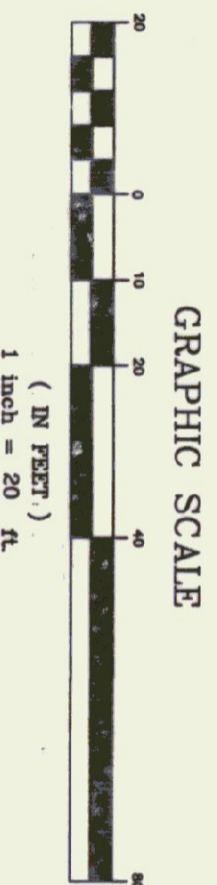
AGENCY OF TRANSPORTATION
133 STATE STREET
MONTPELIER, VERMONT 05602
GLENN GERSHANECK, SECRETARY



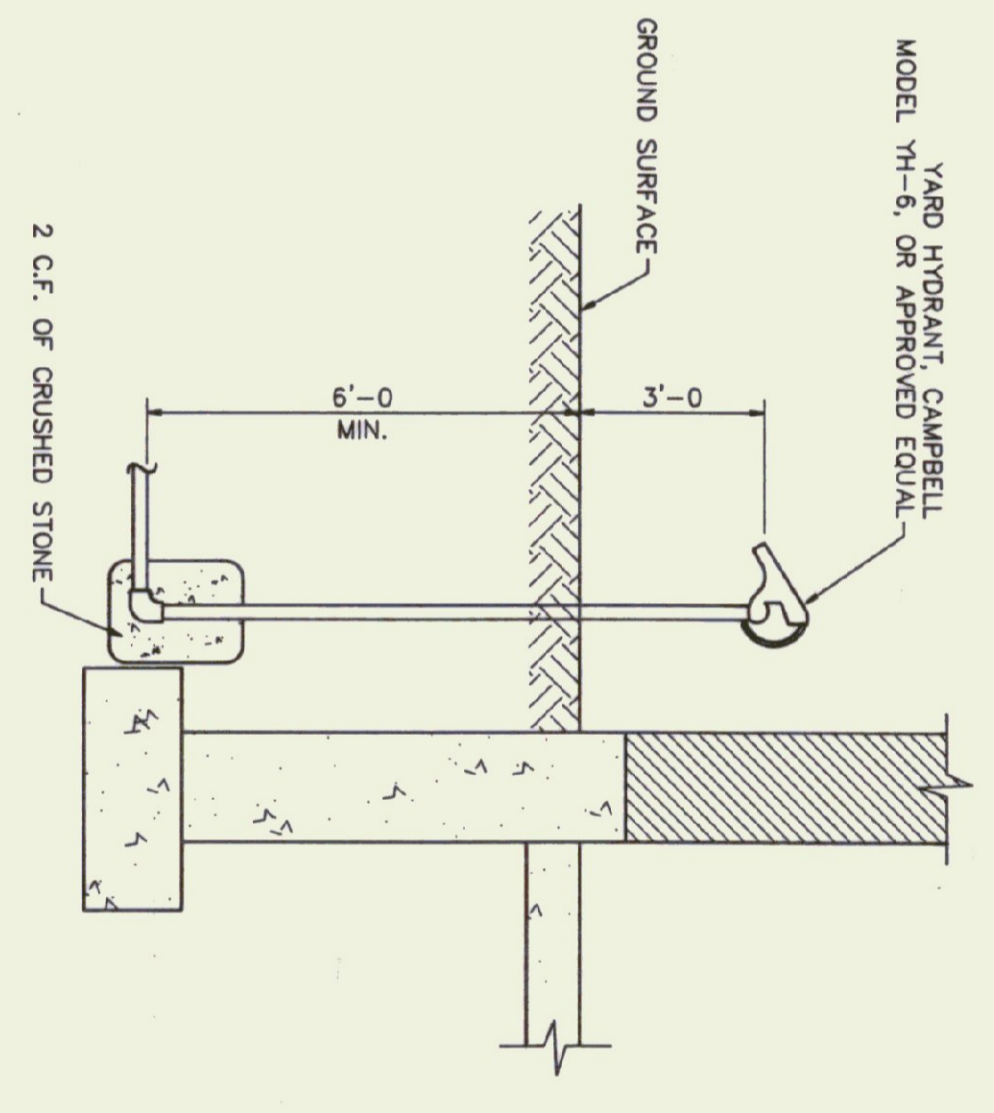
PROJECT LOCATION

LEGEND

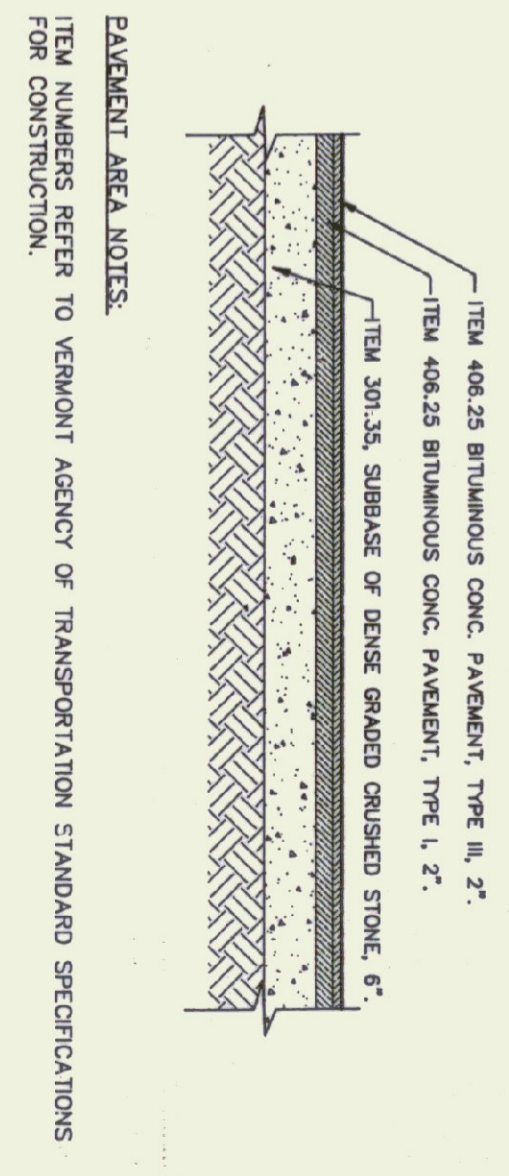
- (100)--- EXISTING CONTOUR
- (577.17)--- PROPOSED SPOT ELEVATION
- (100)--- PROPERTY LINE
- E--- EDGE OF GRAVEL
- S--- EXISTING U/G ELECTRIC
- W--- EXISTING SEWERLINE
- W--- EXISTING WATERLINE
- W--- PROPOSED WATERLINE
- ⊙ EXISTING FIRE HYDRANT
- ⊙ EXISTING TELEPHONE JUNCTION BOX
- ⊙ EXISTING UTILITY POLE
- ⊙ EXISTING CATCH BASIN
- ⊙ EXISTING ROAD SIGN
- ⊙ EXISTING STRUCTURE
- ⊙ IRF IRON ROD FOUND
- NEW PAVEMENT
- EXISTING PAVEMENT
- ⊙ EXISTING TREES



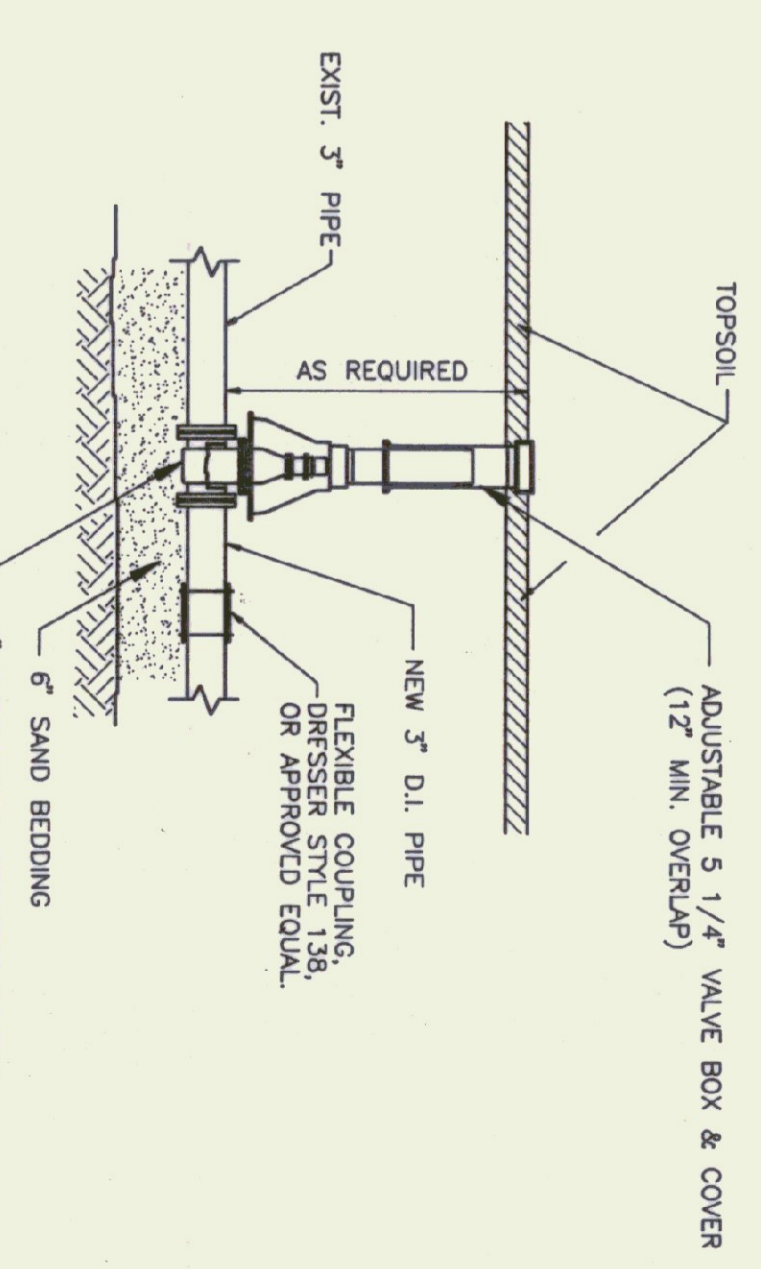
DETAIL 3
SCALE: NONE
OUTSIDE YARD HYDRANT



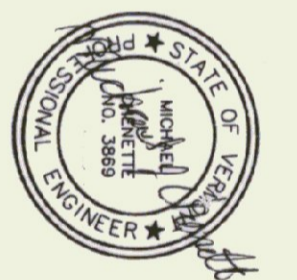
DETAIL 2
SCALE: NONE
TYPICAL PAVEMENT CROSS-SECTION



DETAIL 1
SCALE: NONE
GATE VALVE



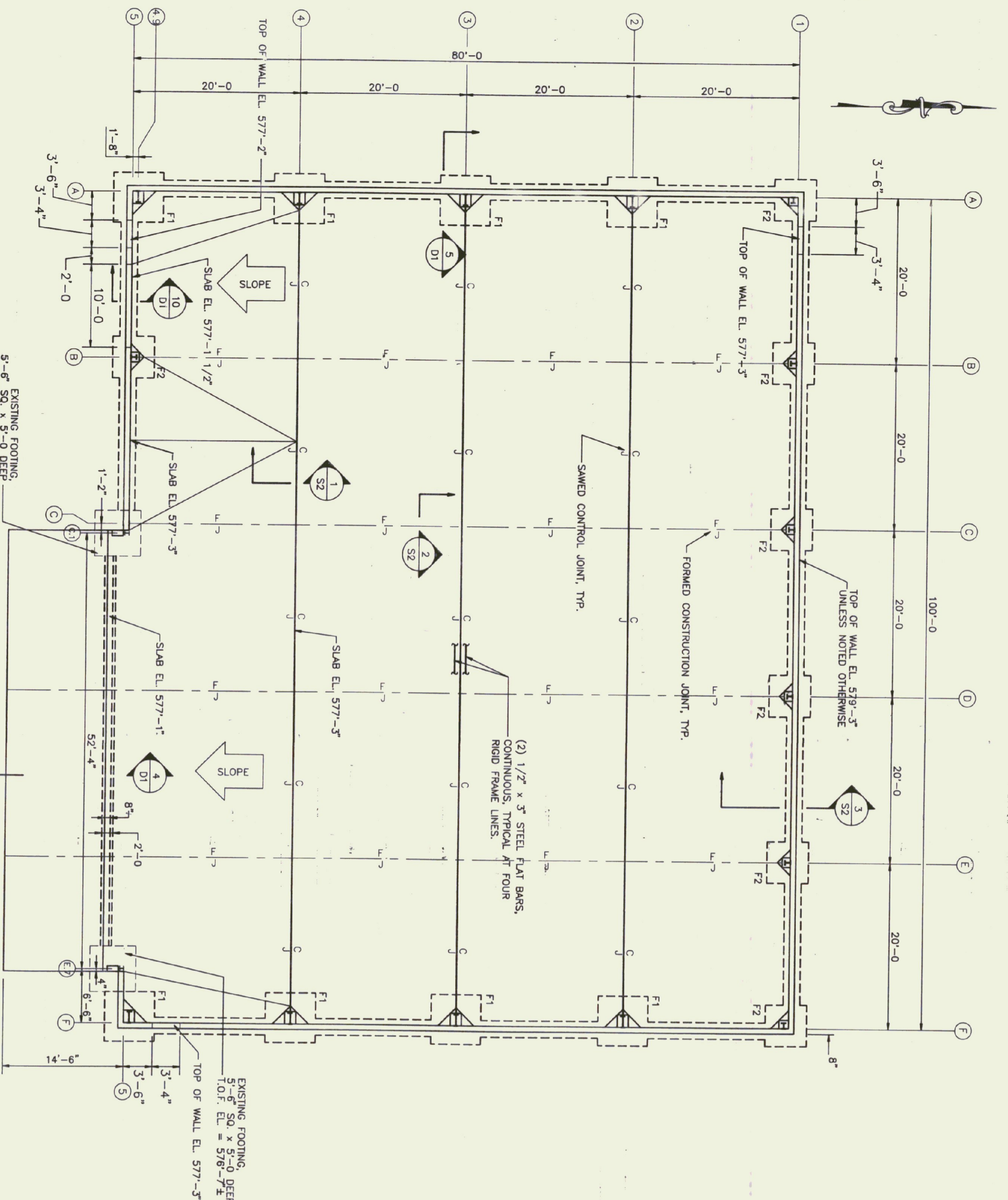
NO.	DATE	REVISION	ENDING



Provan & Lorber, Inc.
ENGINEERS AND PLANNERS
Home: PO Box 390, Cantonese, NH 03220 (603) 746-8220
North: PO Box 187, Littleton, NH 03581 (603) 444-6301
Office: 7 Main St., Montpelier, VT 05602 (802) 229-1442

HARTNESS AIRPORT
SPRINGFIELD, VT
VT STATE BUILDINGS DIVISION
NEW AIRPORT HANGAR #2
SITE PLAN
SHEET 1 OF 7

DATE	PROJ. NO.
JUNE 1996	587.01
ENG. BY: MAC	DRWN. BY: SAR
CHECK BY: MAC	DRWG. NO: P1

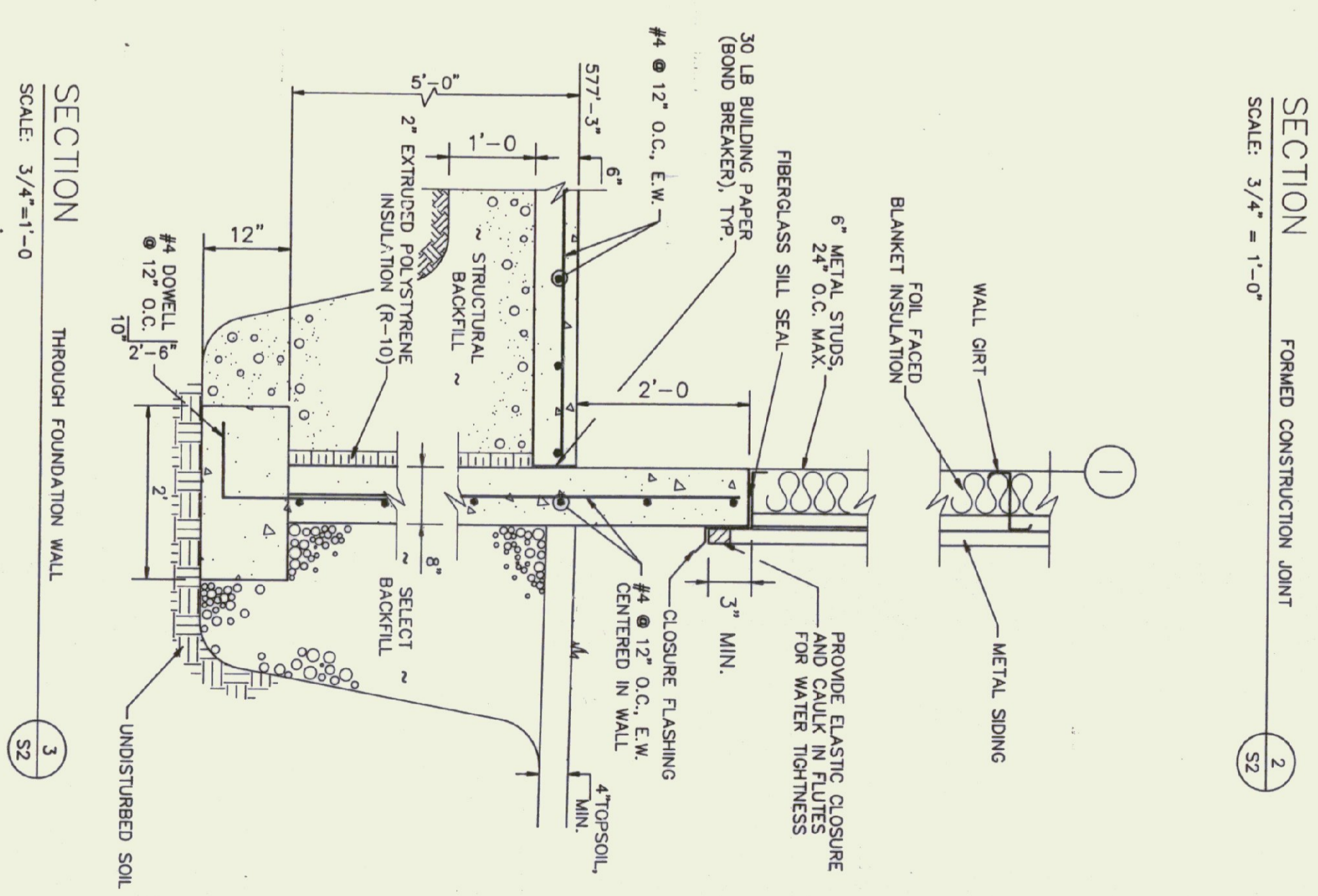
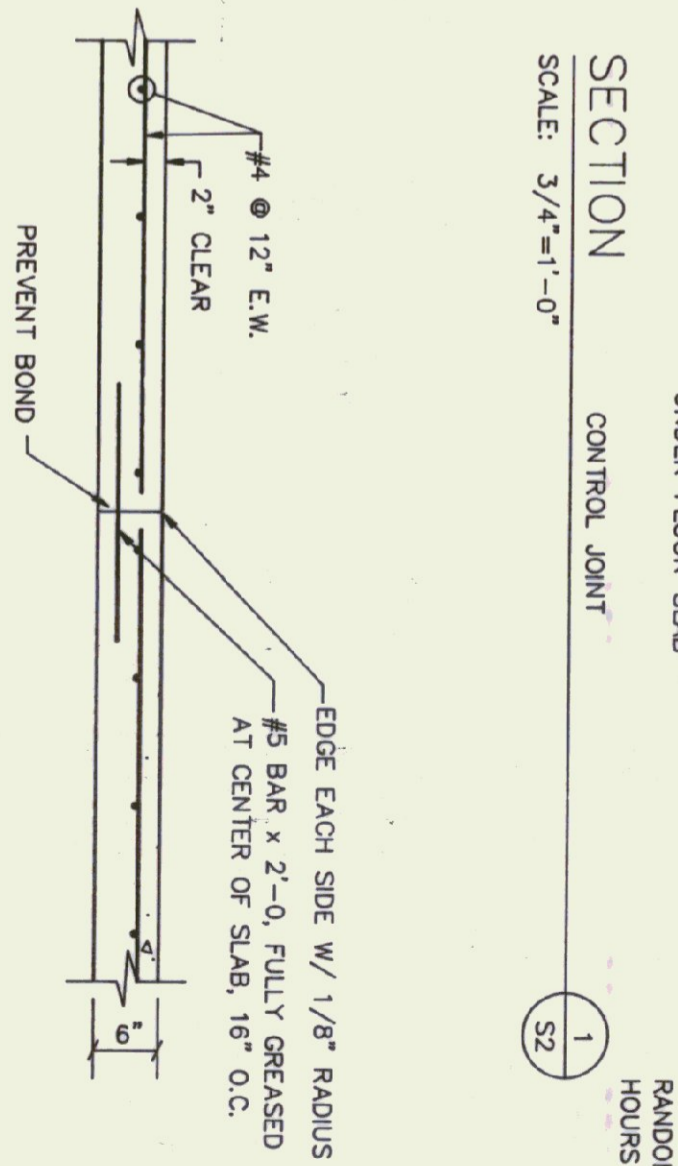
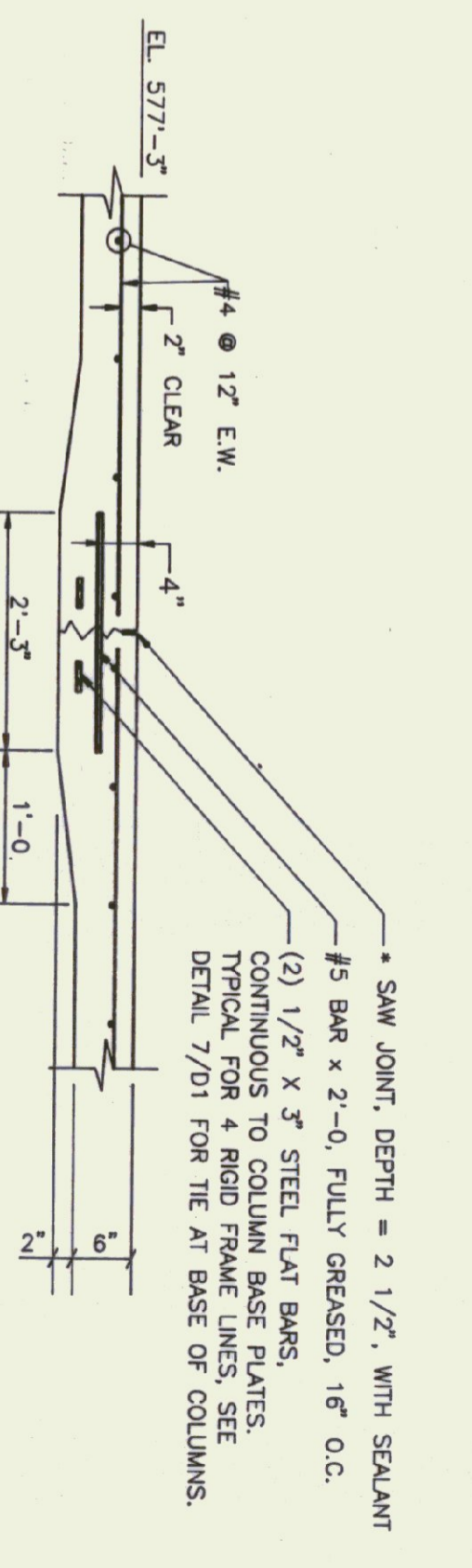


CONTRACTOR NOTE:
 THE FOUNDATION DESIGN SHOWN ASSUMES
 TYPICAL FOUNDATION LOADS FROM A MITIAL
 BUILDING OF THIS TYPE. ACTUAL PIER
 AND FOOTING SIZES MAY HAVE TO BE
 REVISED WHEN THE CONTRACTOR'S SUPER-
 STRUCTURE DESIGN IS FINALIZED. THE
 CONTRACTOR IS RESPONSIBLE FOR FOUNDATION
 CHANGES DUE TO BUILDING SUPPLIER, BID
 POTENTIAL CHANGES.

NOTES:
 1. SLAB-ON-GRADE TO BE 6" THICK REINFORCED WITH #4 @ 12" E.W.
 2. ELEVATION TOP OF FOOTING = 577-3 UNLESS NOTED OTHERWISE

PLAN
 SCALE: 1/8" = 1'-0"
 FOUNDATION PLAN

FOOTING SCHEDULE		
MARK	SIZE	REMARKS
F1	6'-0" X 6'-0" X 1'-0" DEEP	#6S @ 12" O/C EA. WAY (BOTTOM)
F2	5'-0" X 5'-0" X 1'-0" DEEP	#5S @ 12" O/C EA. WAY (BOTTOM)

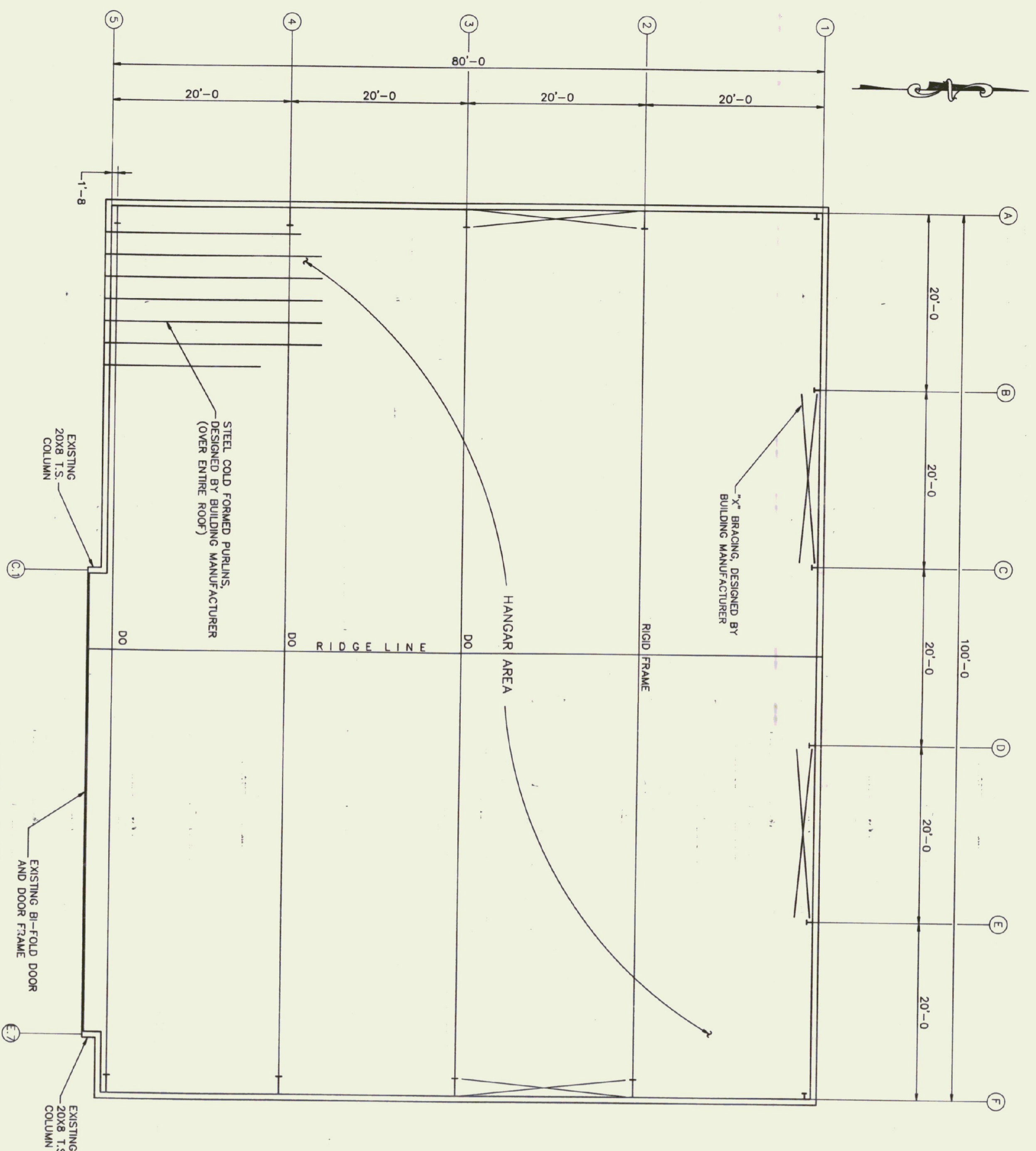


NO.	DATE	REVISION	ENGDWG

Provan & Lorber, Inc.
 ENGINEERS AND PLANNERS
 746-8220
 746-8220
 444-6501
 228-1442

HARTNESS AIRPORT
 SPRINGFIELD, VT
 VT STATE BUILDINGS DIVISION
 NEW AIRPORT HANGAR #2
 FOUNDATION PLAN AND DETAILS
 SHEET 3 OF 7

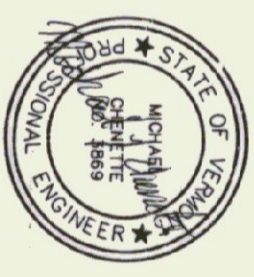
DATE	JUNE 1986	PROJ. NO.	587.01
ENG. BY	MAC	DRWN. BY	SAR
CHEK. BY	MAC	DRWG. NO.	S2



ROOF FRAMING PLAN
SCALE: 1/8" = 1'-0"

- NOTES:
1. ROOF DECK TO BE 22 GA TYPE B ROOF DECK AS MANUFACTURED BY UNITED STEEL DECK, OR APPROVED EQUAL.

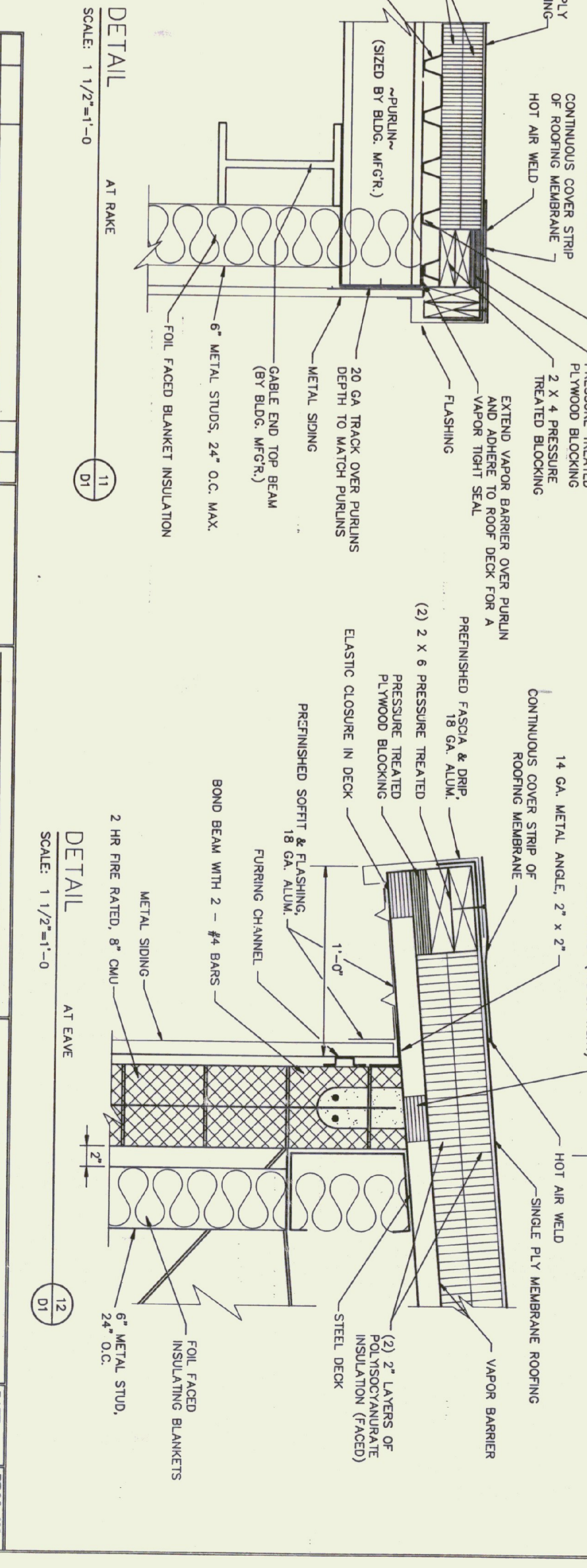
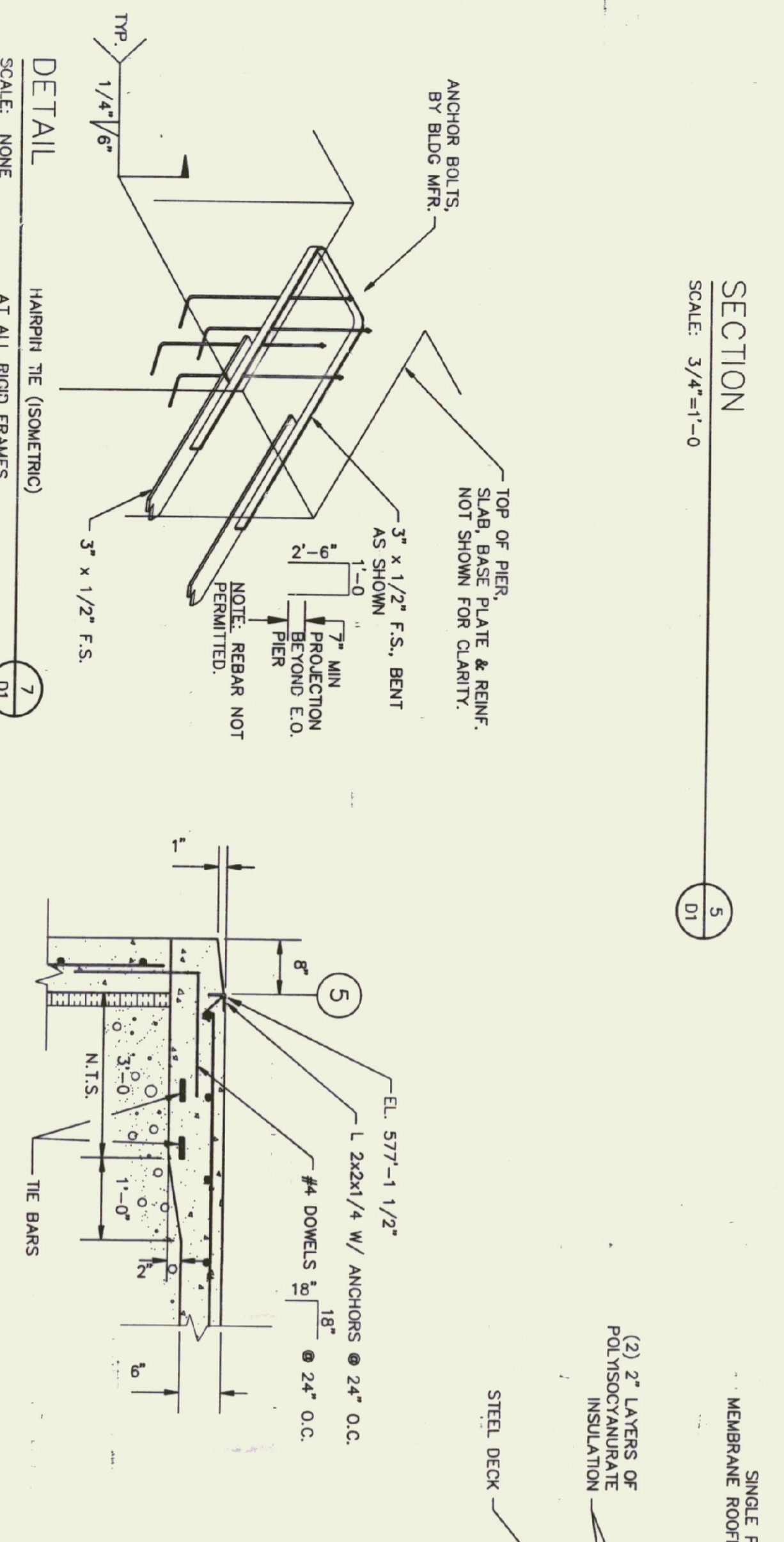
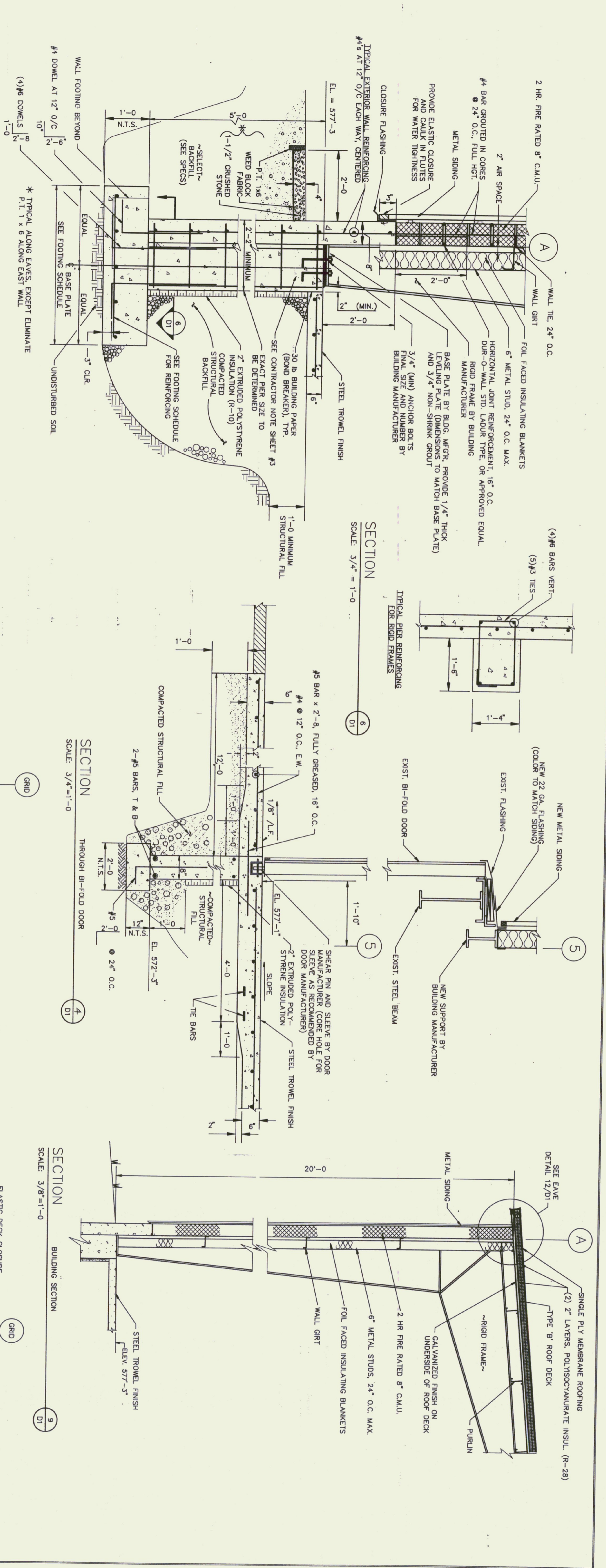
NO.	DATE	REVISION	ENG. DWG.



Provan & Lorber, Inc.
ENGINEERS AND PLANNERS
Home Office: PO Box 386, Coolebrook, NH 03270 (603) 751-3350
Northern NH Office: PO Box 187, Littleton, NH 03051 (603) 444-8301
Southern NH Office: Main St., Montpelier, VT 05602 (802) 229-1442

HARTNESS AIRPORT
SPRINGFIELD, VT
VT STATE BUILDINGS DIVISION
NEW AIRPORT HANGAR #2
ROOF FRAMING PLAN & DETAILS

DATE	PROJ. NO.
JUNE 1996	587.01
ENG. BY MLC	DRWN. BY SAR
CHRD. BY MLC	DRWG. NO S3
SHEET 4 OF 7	



NO.	DATE	REVISION	ENGINEERING

Provan & Lorber, Inc.
ENGINEERS AND PLANNERS
 Office: P.O. Box 389, Cambridge, NH 03282 (603) 746-8220
 Northbury, NH
 Office: P.O. Box 187, Littleton, NH 03611 (603) 444-9301
 Vermont: 7 Main St., Montpelier, VT 05602 (802) 228-1448

HARTNESS AIRPORT
 SPRINGFIELD, VT
VT STATE BUILDINGS DIVISION
NEW AIRPORT HANGAR #2
 MISC. DETAILS

DATE	PROJ. NO.
JUNE 1998	587.01
ENG. BY	DIRTN. BY
MAC	SAR
CHECK BY	DRWG. NO.
MAC	DI

PANEL DESIGNATOR

PANEL: PP
 FED FROM: EXISTING 200 AMP SERVICE - SEE SITE PLAN
 MOUNTING: SURFACE
 MAINS: 200 AMP MAIN CIRCUIT BREAKER
 CONNECTED LOAD:

CKT NO.	KW LOAD	DESCRIPTION	BREAKER	BREAKER	DESCRIPTION	KW LOAD	CKT NO.
1	20	EXIT, EMERGENCY	P	100	T HANGAR PANEL	NOTE 1	2
2	30	BI-FOLD DOOR	-	-	-	-	4
3	-	-	-	-	-	-	6
5	20	CONVENIENCE OUTLETS	-	-	HANGAR LIGHTS	8	10
7	20	CONVENIENCE OUTLETS	-	-	HANGAR LIGHTS	8	10
9	20	CONVENIENCE OUTLETS	-	-	HANGAR LIGHTS	8	10
11	20	EXTERIOR LIGHTING	-	-	SPARE	14	16
13	20	SPARE	-	-	SPARE	14	16
15	20	SPARE	-	-	SPACE	18	20
17	20	SPACE	-	-	SPACE	20	22
19	20	SPACE	-	-	SPACE	22	24
21	20	SPACE	-	-	SPACE	24	26
23	20	SPACE	-	-	SPACE	26	28
25	20	SPACE	-	-	SPACE	28	30
27	20	SPACE	-	-	SPACE	30	30
29	20	SPACE	-	-	SPACE	30	30

ELECTRICAL LEGEND

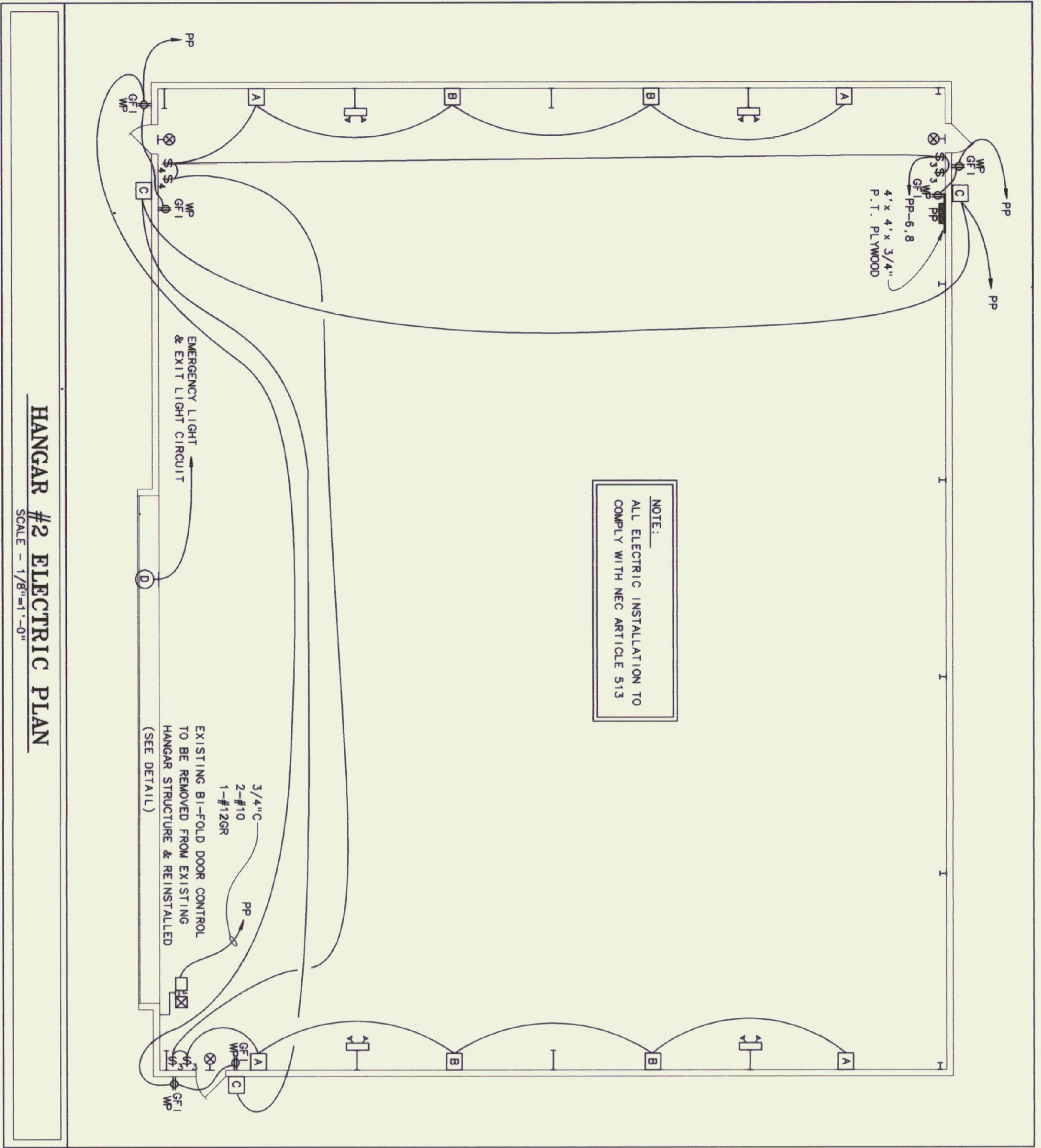
- H.I.D. FIXTURE
- WALL LIGHT
- EXIT LIGHT - WALL
- EMERGENCY LIGHT - DOUBLE HEAD
- SINGLE POLE SWITCH
- THREE WAY SWITCH
- DUPLEX OUTLET
- MOTOR STARTER
- SAFETY SWITCH
- PUSH BUTTON STATION
- ABOVE FINISHED FLOOR
- ELECTRICAL CONTRACTOR
- GROUND

NOTE 1: SEE SITE PLAN

ELECTRICAL FIXTURE SCHEDULE

KEY	MANUFACTURER & MODEL	MOUNTING	LAMPS	VOLTS	REMARKS
A	GE-VLUF-25-S-1-A-1-7X6-OB-B	21' AFF	250W-HPS 150W-Q/DC	120	TIME DELAY-AUTO SWITCHED 150W QUARTZ LAMP
B	GE-HLUF-25-S-1-A-1-4X2-OB-B	21' AFF	250W-HPS 150W-Q/DC	120	TIME DELAY-AUTO SWITCHED 150W QUARTZ LAMP
C	KIM W01402-70HPS-120-OB-F-1 A30 SOS	WALL - (SEE ARCH ELEV.)	70W-HPS	120	PHOTOCELL CONTROL
D	HUGHES PHILIPS - OB20A31 RED SINGLE OBSTRUCTION LIGHT	3/4" GRG 12" ABV ROOF RIDGE	116W-LH116 -125A210	120	LB CONDULET ON EXT WALL
<input checked="" type="checkbox"/>	LIGHTALARMS - XEBRW-FL	4" OUTLET BOX UNIVERSAL	2-7 WATT-FL	120	12" ABOVE DOOR

NOTE:
 ALL ELECTRIC INSTALLATION TO COMPLY WITH NEC ARTICLE 513

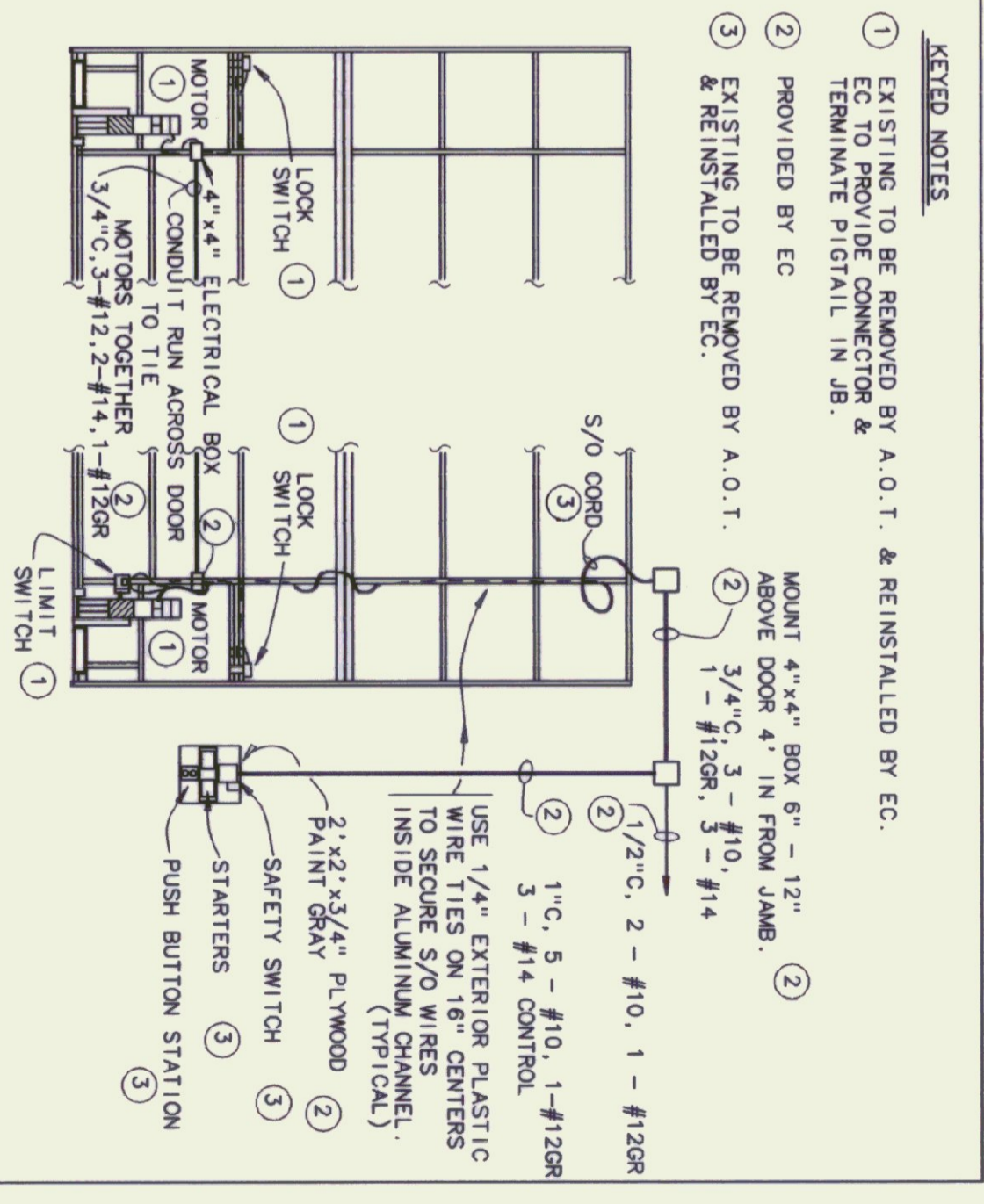


HANGAR #2 ELECTRIC PLAN

SCALE = 1/8" = 1'-0"

BI-FOLD DOOR DETAIL

NO SCALE



KEYED NOTES

- 1 EXISTING TO BE REMOVED BY A.O.T. & REINSTALLED BY EC. TO PROVIDE CONNECTOR & TERMINATE PIGTAIL IN JB.
- 2 PROVIDED BY EC
- 3 EXISTING TO BE REMOVED BY A.O.T. & REINSTALLED BY EC.

Pearson & Associates
 MECHANICAL & ELECTRICAL ENGINEERS

P.O. BOX 610 STOWE, VERMONT 05672
 TEL. (802) 253-9607 FAX. (802) 253-9290



Provan & Lorber, Inc.
 ENGINEERS & PLANNERS

Home Office: PO Box 309, Contoocook, NH 03229 (603) 746-9220
 Northern NH Office: PO Box 167, Littleton, NH 03861 (603) 444-6301
 Vermont Office: 7 Main St., Montpelier, VT 05602 (802) 229-1442

HARTNESS AIRPORT
 SPRINGFIELD, VERMONT
 VERMONT STATE BUILDINGS DIVISION
 NEW AIRPORT HANGAR #2

DATE: 1/8/1996
 SCALE: 1/8" = 1'-0"
 DRAWN BY: B.W.M.
 APPROVED BY: [Signature]