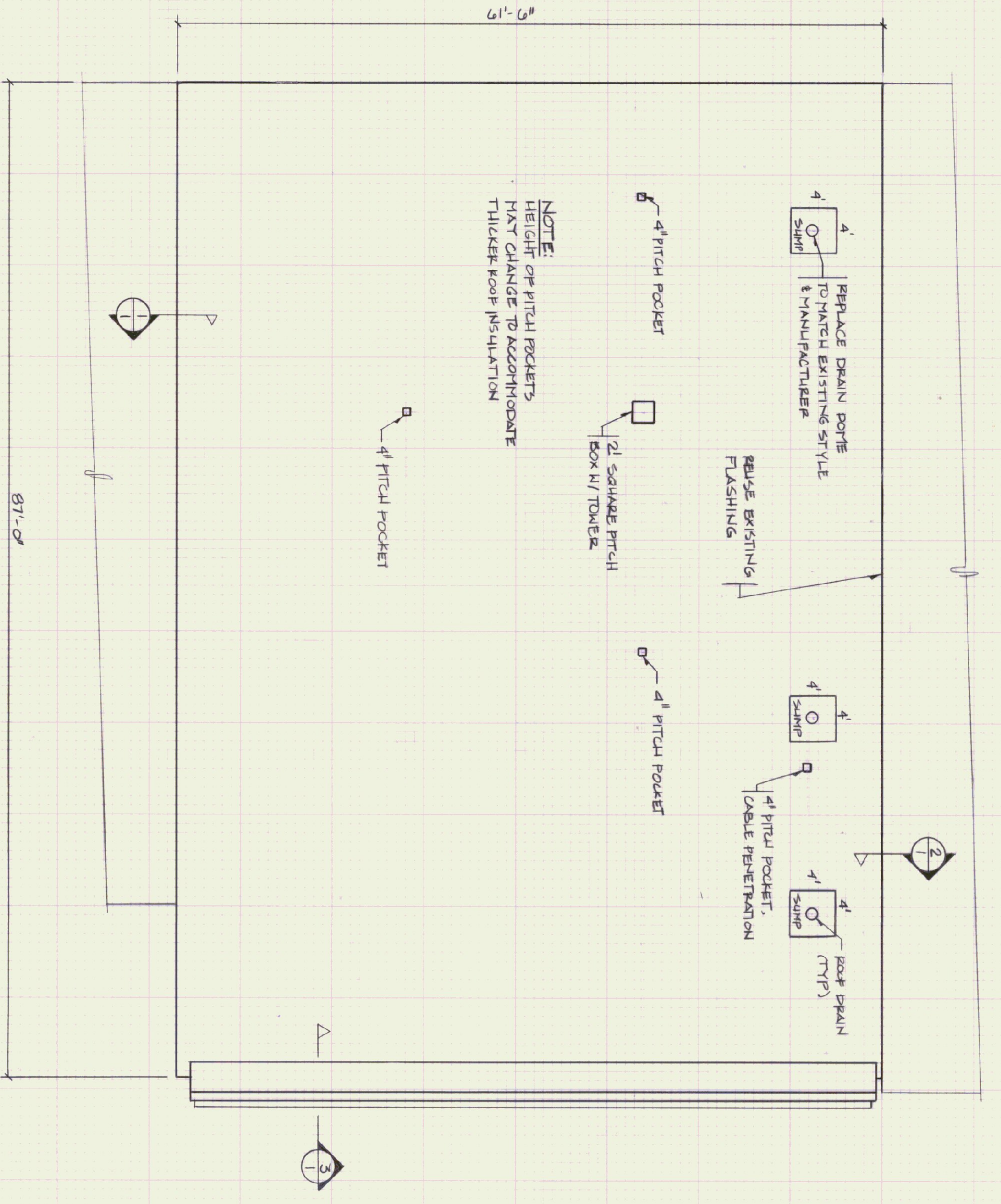
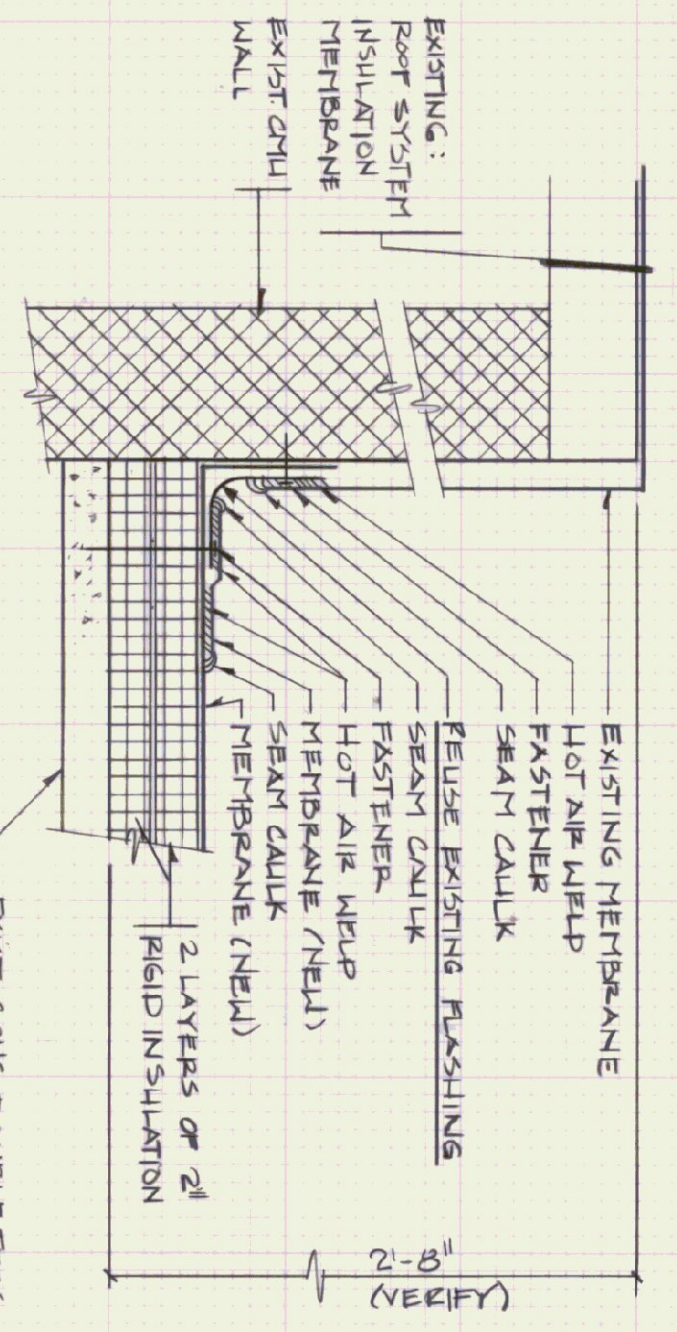


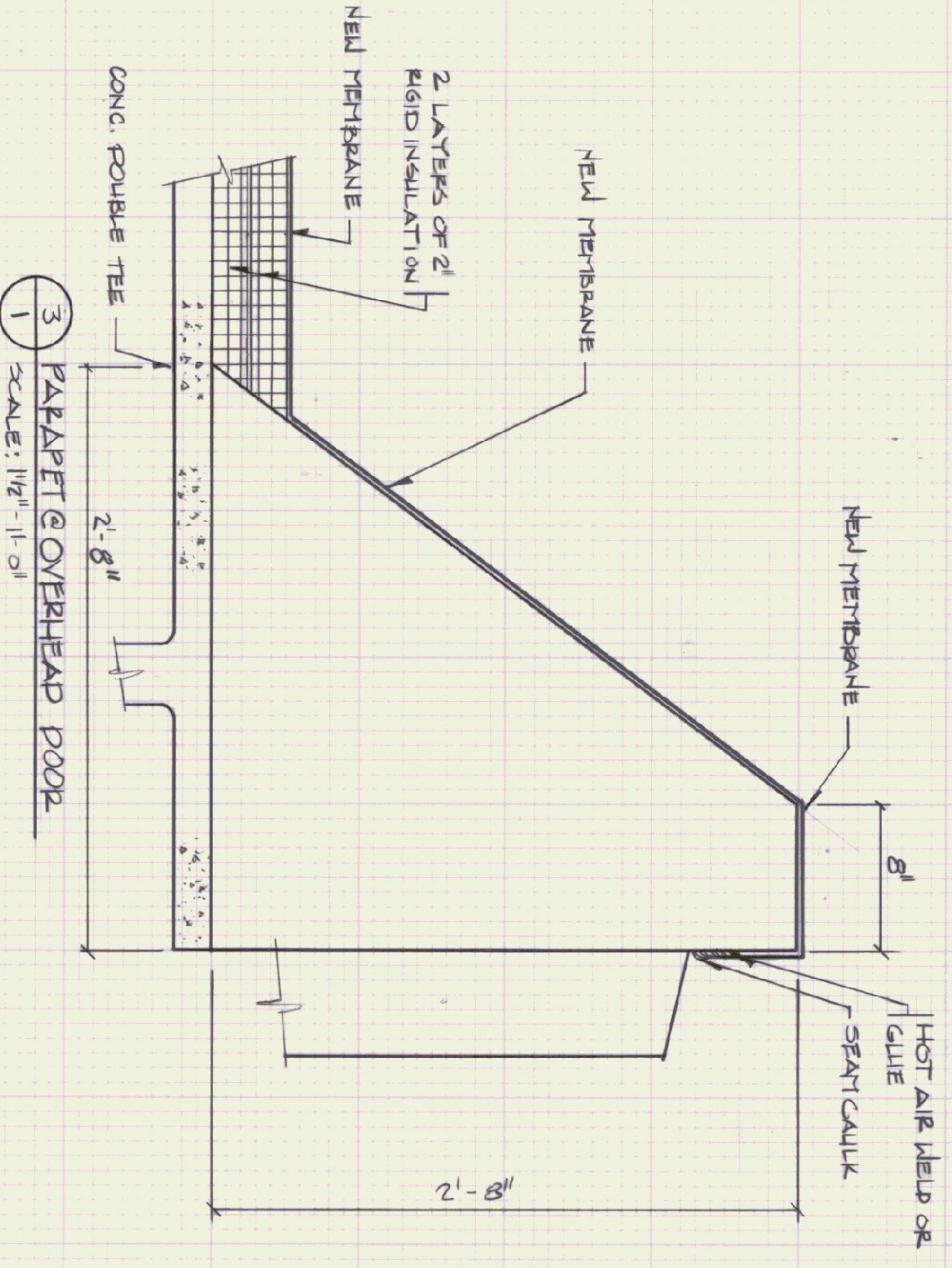
1 GRAVEL STOP & OVERHANG  
SCALE: 1/2" = 1'-0"



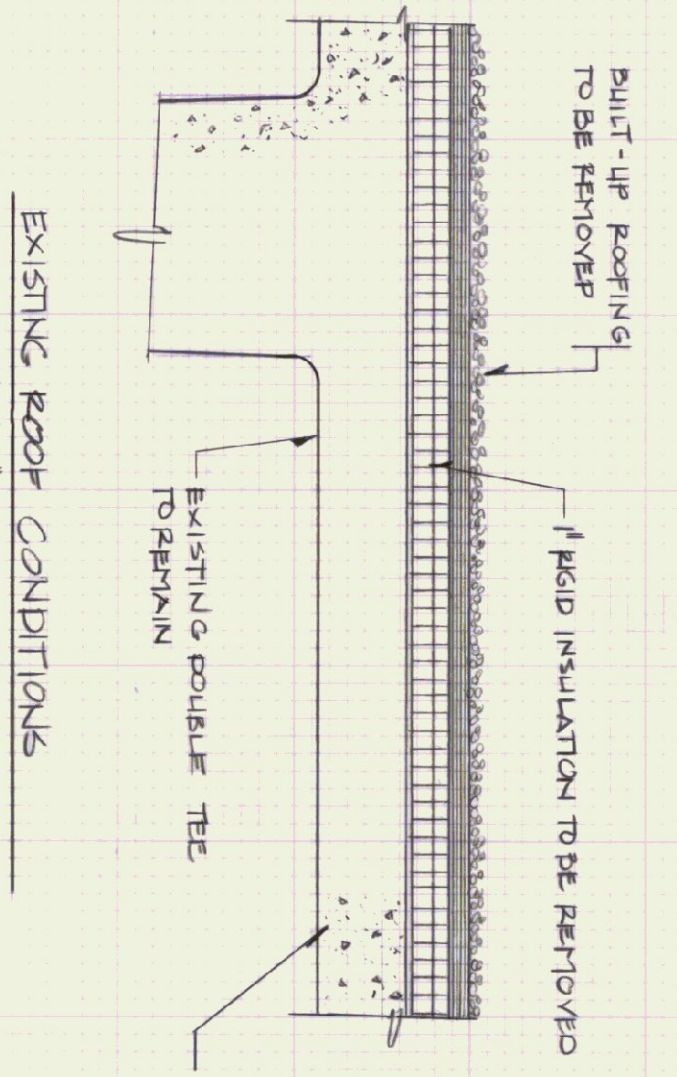
ROOF PLAN  
SCALE: 1/8" = 1'-0"



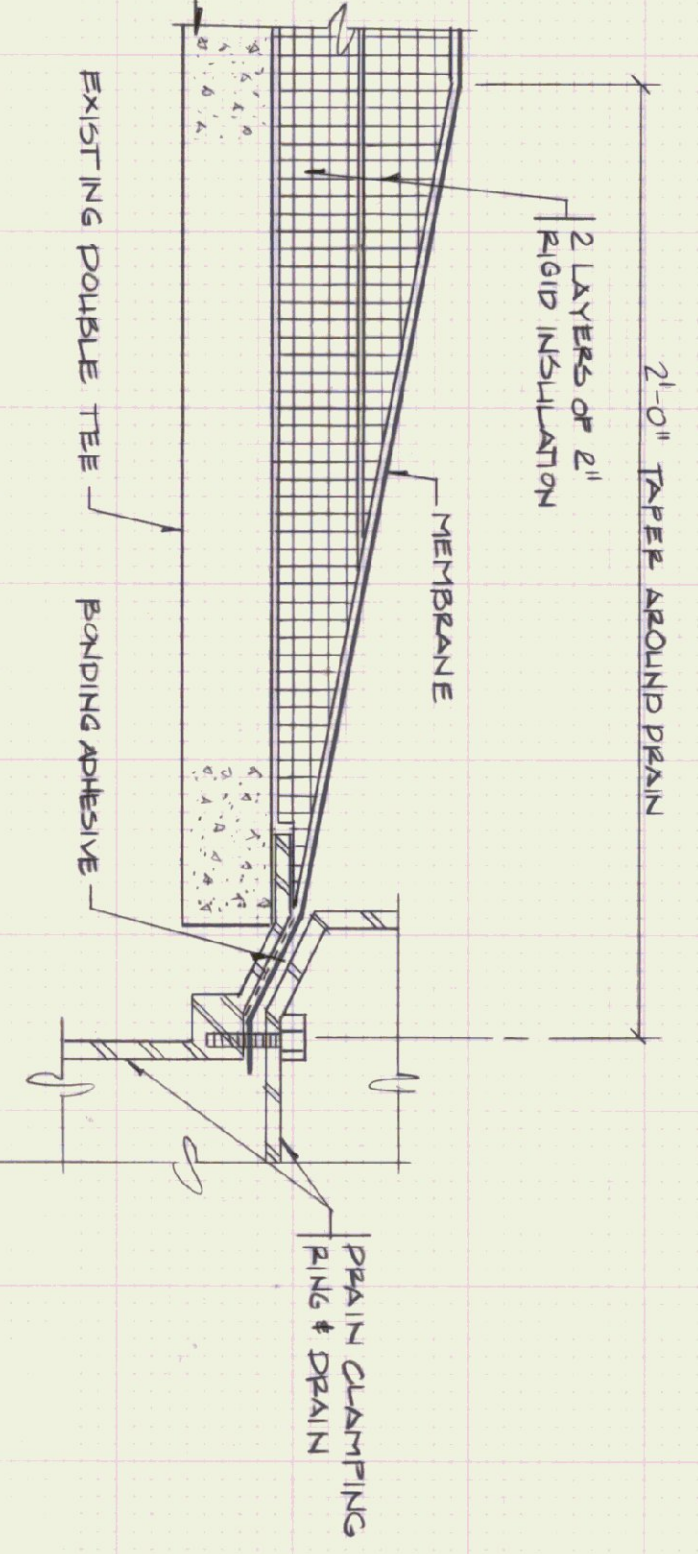
2 FLASHING DETAIL @ OFFICE BLDG WALL  
SCALE: 1/2" = 1'-0"



3 PARAPET @ OVERHEAD DOOR  
SCALE: 1/2" = 1'-0"



EXISTING ROOF CONDITIONS  
SCALE: 3/4" = 1'-0"



ROOF DRAIN DETAIL  
SCALE: 3/4" = 1'-0"

- NOTES:
- 1 REMOVE EXISTING BUILT-UP ROOF AND INSULATION. REPLACE WITH NON-BALASTED SINGLE-PLY MEMBRANE ROOFING SYSTEM.
  - 2 REPLACE ALL ALUMINUM FLASHING EXCEPT WHERE NOTED.
  - 3 HEIGHT OF PITCH POCKETS, MAY CHANGE TO ACCOMMODATE THICKER ROOF INSULATION.

STATE OF VERMONT  
DEPARTMENT OF STATE BUILDINGS  
AGENCY OF ADMINISTRATION  
MONTPELIER, VERMONT

**BENNINGTON STATE AIRPORT  
HANGAR BUILDING REROOF**

DATE: 9-15-90	SCALE: AS NOTED	REVISIONS:	VERMONT DWG. NO. R1
DRAWN BY: D. THURBER	APPROVED BY: T. RUSTY		1 OF 1