



11/14/2012 08:52



11/14/2012 08:52



11/14/2012 08:52



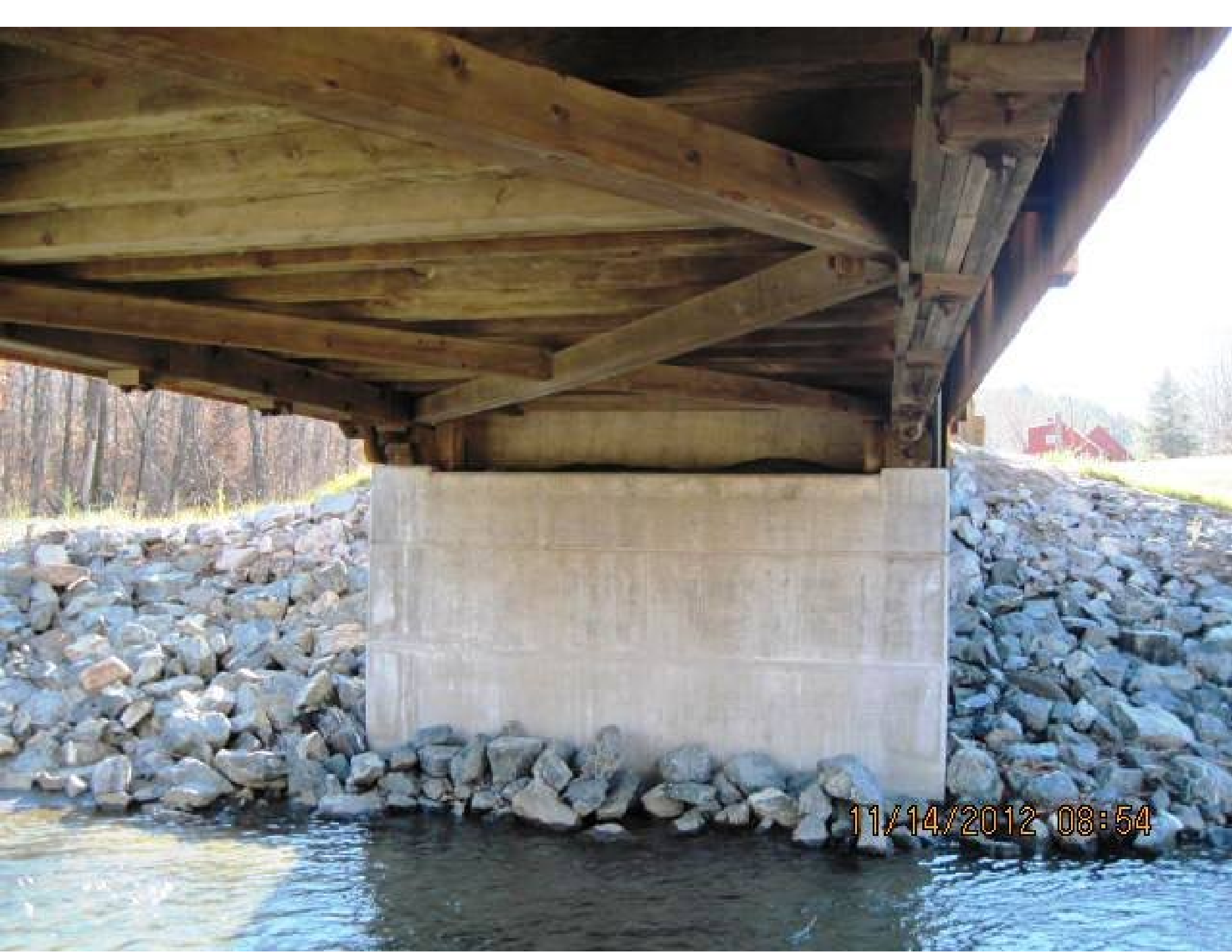
8'-0"

LEGAL LOAD
LIMIT
6,000
POUNDS

11/14/2012 08:53



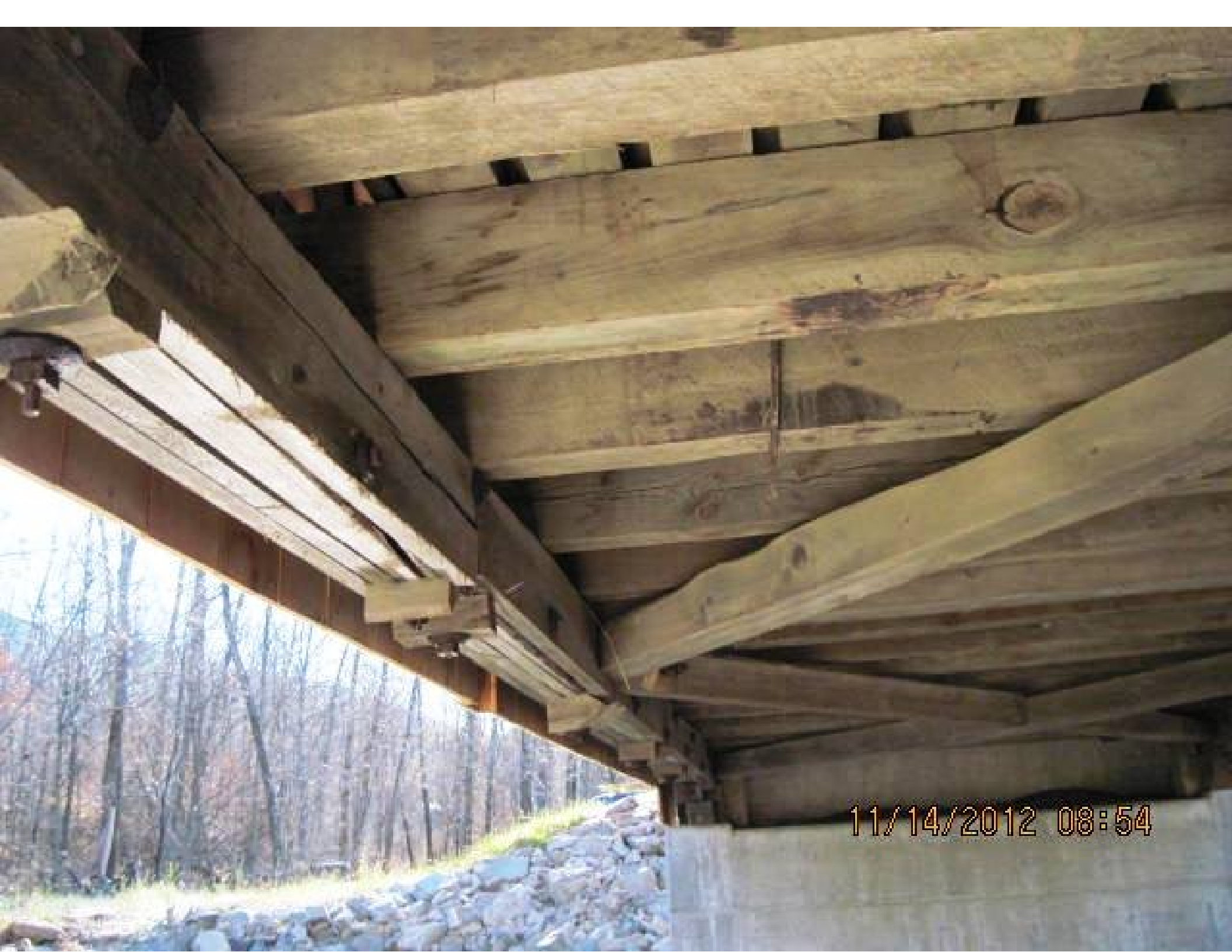
11/14/2012 08:53



11/14/2012 08:54



11/14/2012 08:54



11/14/2012 08:54



11/14/2012 08:55



11/14/2012 08:55

H-Beam
W

11/14/2012 08:56

H-BEAM

✓

11/14/2012 08:56



11/14/2012 08:57



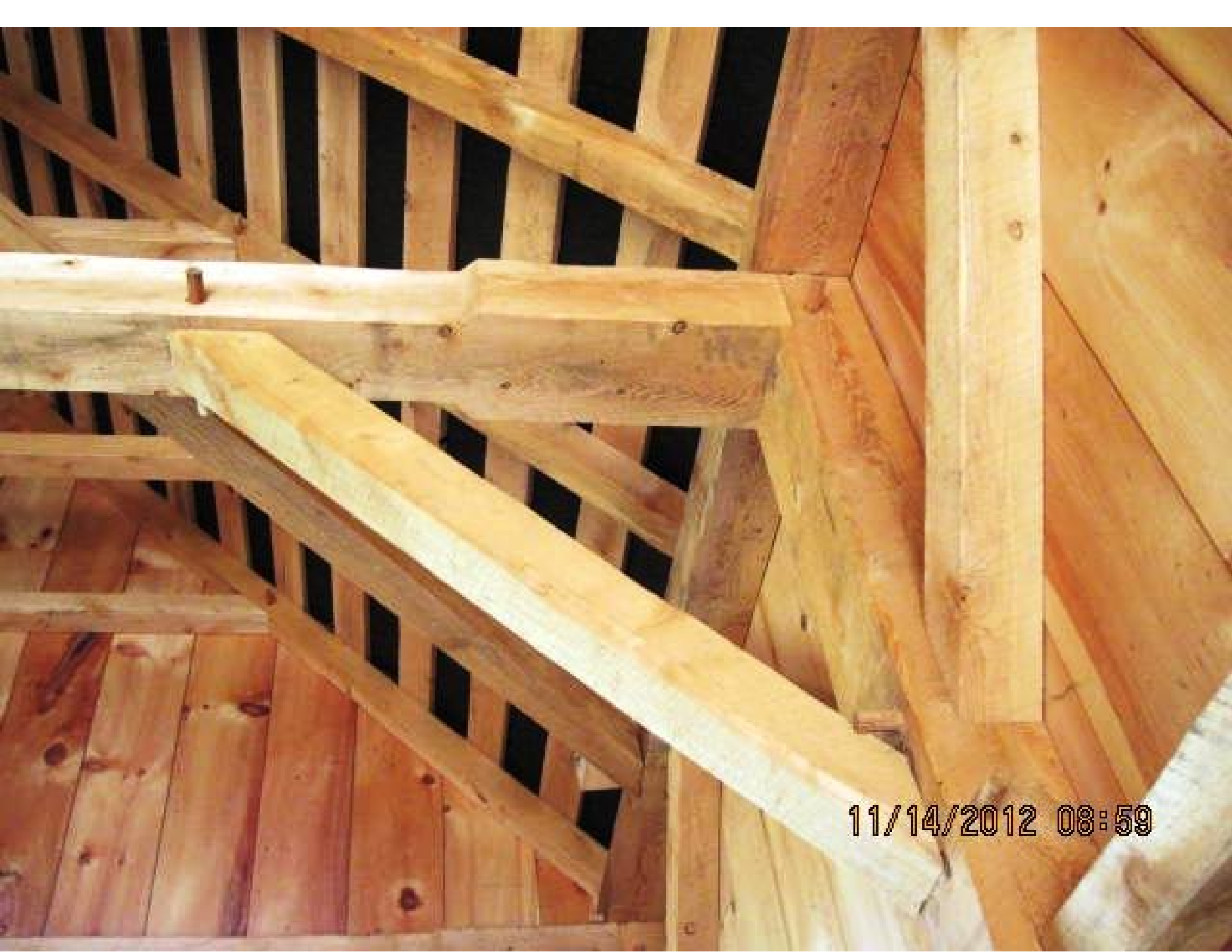
11/14/2012 08:57



11/14/2012 08:57



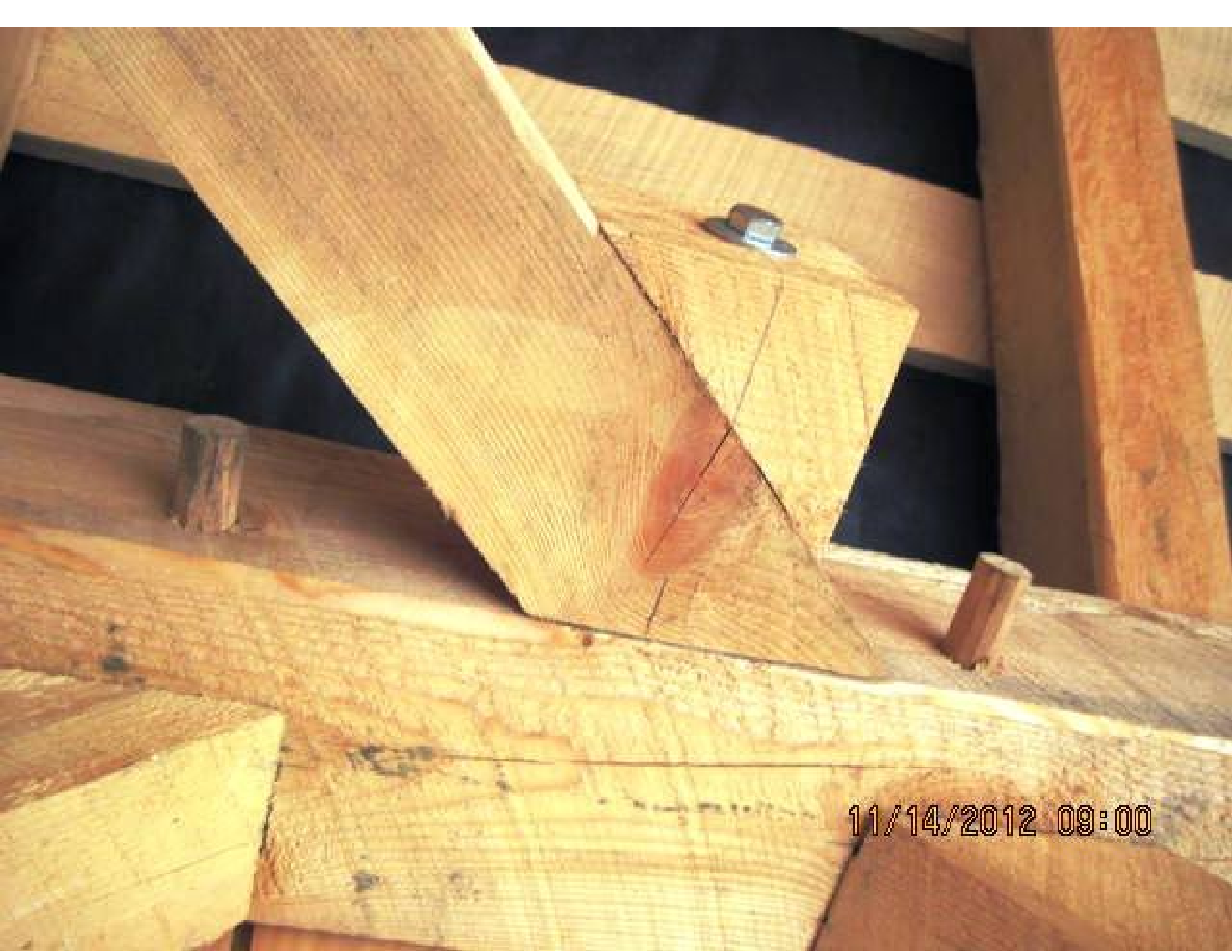
11/14/2012 08:59



11/14/2012 08:59



11/14/2012 09:00



11/14/2012 09:00



11/14/2012 09:01



11/14/2012 09:02



11/14/2012 09:02



11/14/2012 09:02



11/14/2012 09:04



11/14/2012 09:06

