

BRIDGE WEIGHT  
LIMIT  
24,000  
POUNDS

12/13/2012 09:11



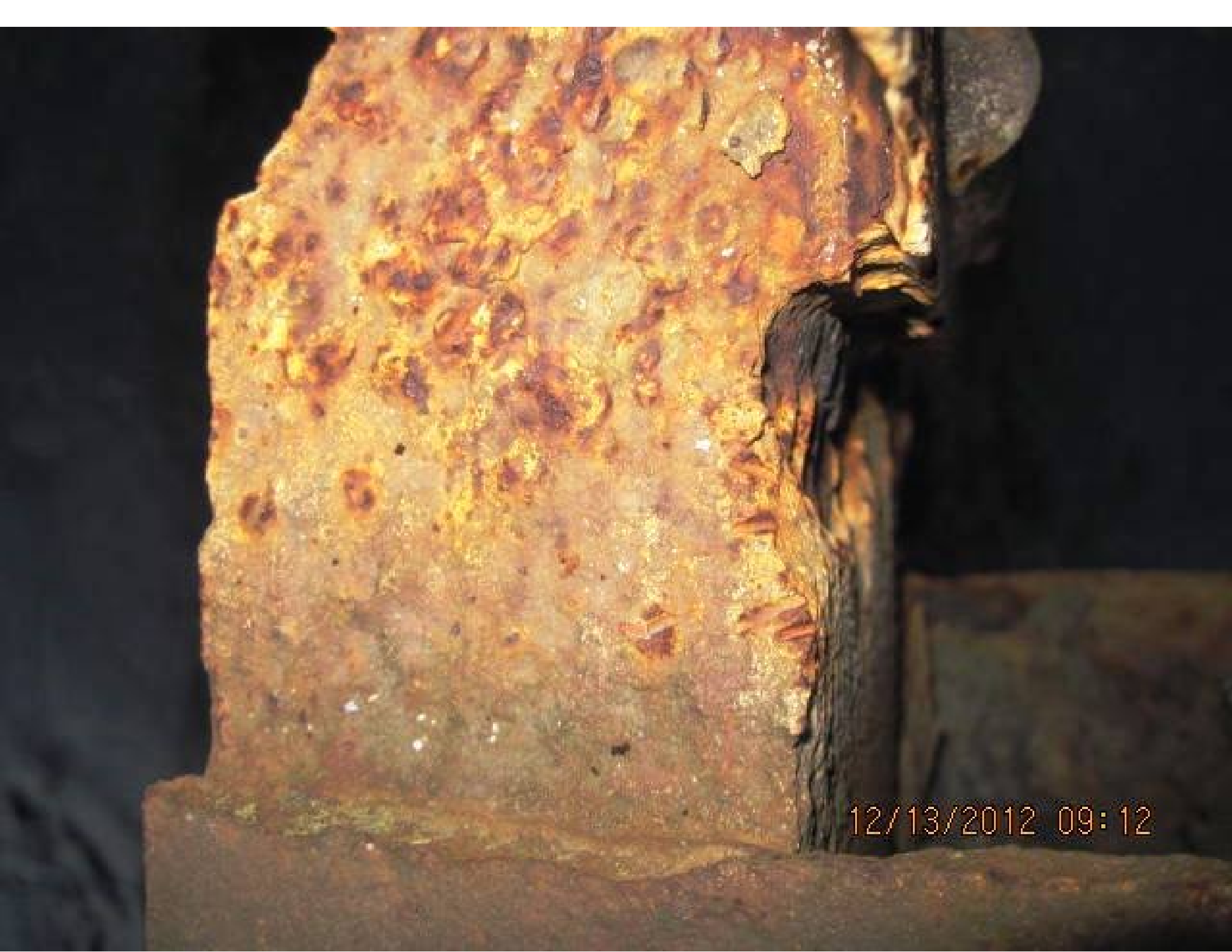
12/13/2012 09:11



12/13/2012 09:12



12/13/2012 09:12



12/13/2012 09:12



12/13/2012 09:17



12/13/2012 09:21



12/13/2012 09:23



ONE LANE  
BRIDGE

12/13/2012 09:23



12/13/2012 09:24



12/13/2012 09:25



12/13/2012 09:25