



1033

VILLAGE BRIDGE

ONE LANE
BRIDGE

9'-6"

WEIGHT
LIMIT
3
TONS

STOP

NO
TRUCKS
BUSES
OR
RV'S



ONE LANE
BRIDGE

↑
9'-6"
↓

WEIGHT
LIMIT
3
TONS





9'-6"

WOOD
X
NETICS



STOP

NO
TRUCKS
BUSES
OR RVs



1033
VILLAGE BRIDGE

ONE LANE
BRIDGE

↑
9'-6"
↓

WEIGHT
LIMIT
3
TONS

STOP

NO
TRUCKS
BUSES
OR
RV'S















STOP

NO TRUCKS BUSES OR RVs

9-6





WAITSFIELD VILLAGE
BRIDGE

CONSTRUCTED 1833

PLAQUE PROVIDED BY
WAITSFIELD HISTORICAL SOCIETY
1994















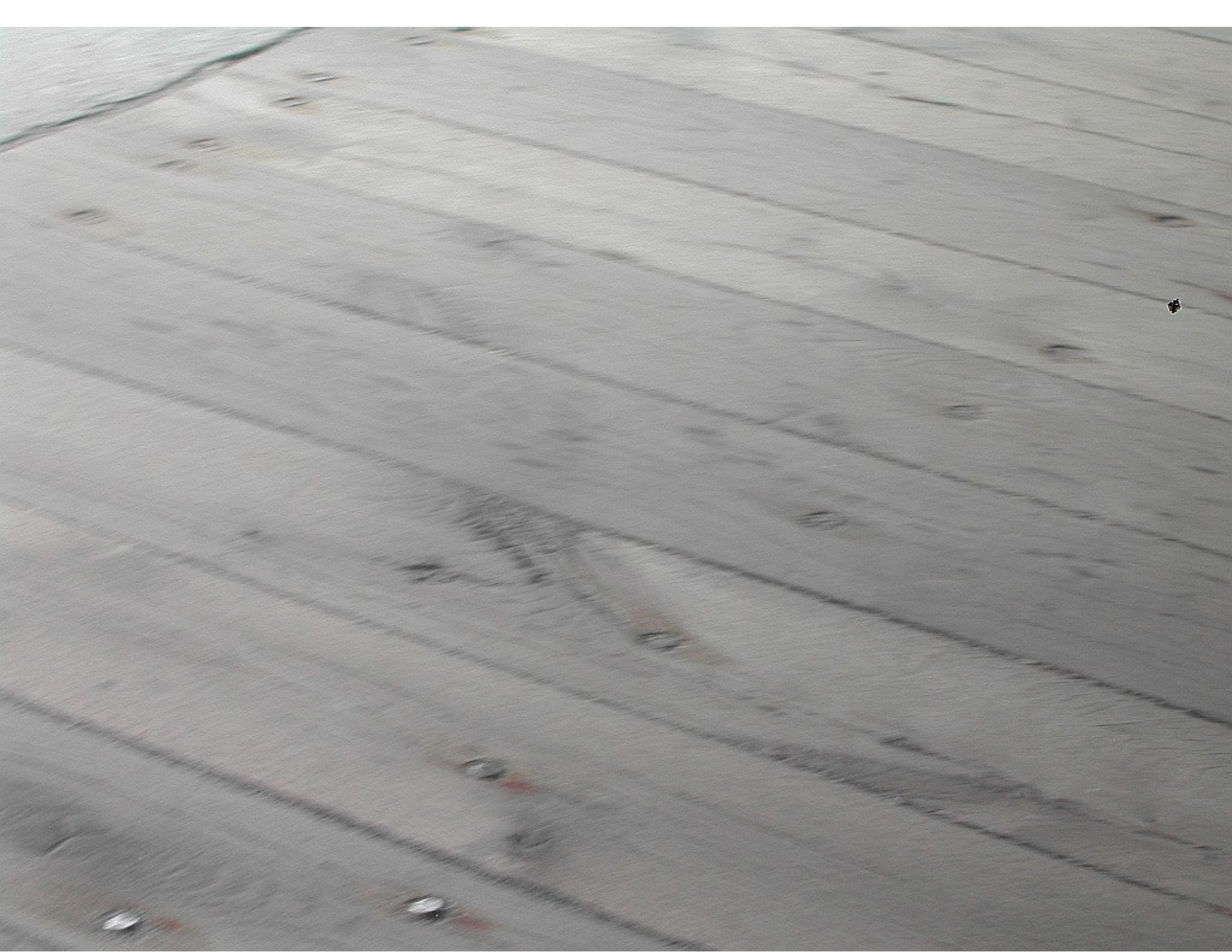


















































R33

VILLAGE BRIDGE

ONE LANE
BRIDGE

↑
9'-6"
↓

WEIGHT
LIMIT
3
TONS

Worker in safety vest



