



07/23/2010 08:46



07/23/2010 08:47



07/23/2010 08:47



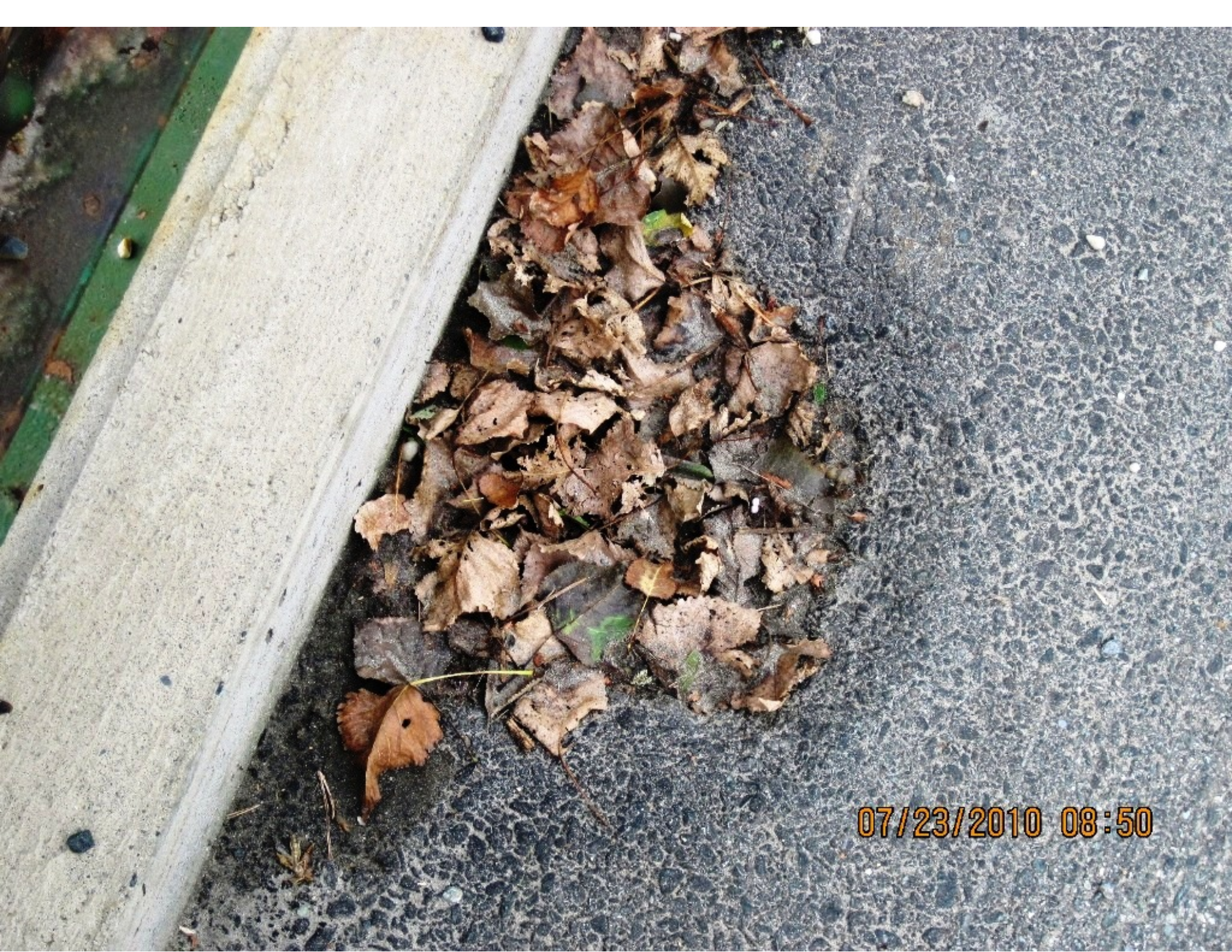
07/23/2010 08:47



07/23/2010 08:48



07/23/2010 08:49



07/23/2010 08:50



07/23/2010 08:50

BRIDGE WEIGHT LIMIT

2 AXLES	16 TONS
3 AXLES	20 TONS
4 AXLES	22 TONS
5 AXLES	OR MORE
	● 36 TONS

07/23/2010 08:51



07/23/2010 08:51



07/23/2010 08:53



07/23/2010 08:56



07/23/2010 08:56



07/23/2010 08:57



07/23/2010 08:59



07/23/2010 08:59



07/23/2010 09:01



07/23/2010 09:06































