



SPEED LIMIT
HORSES AT A WALK
MOTOR VEHICLES
10 MILES PER HR.

WEIGHT
LIMIT
8
TONS



10'-6"

WEI
L

GREEN SPRING
BRIDGE AT WALKER
HOLLOW

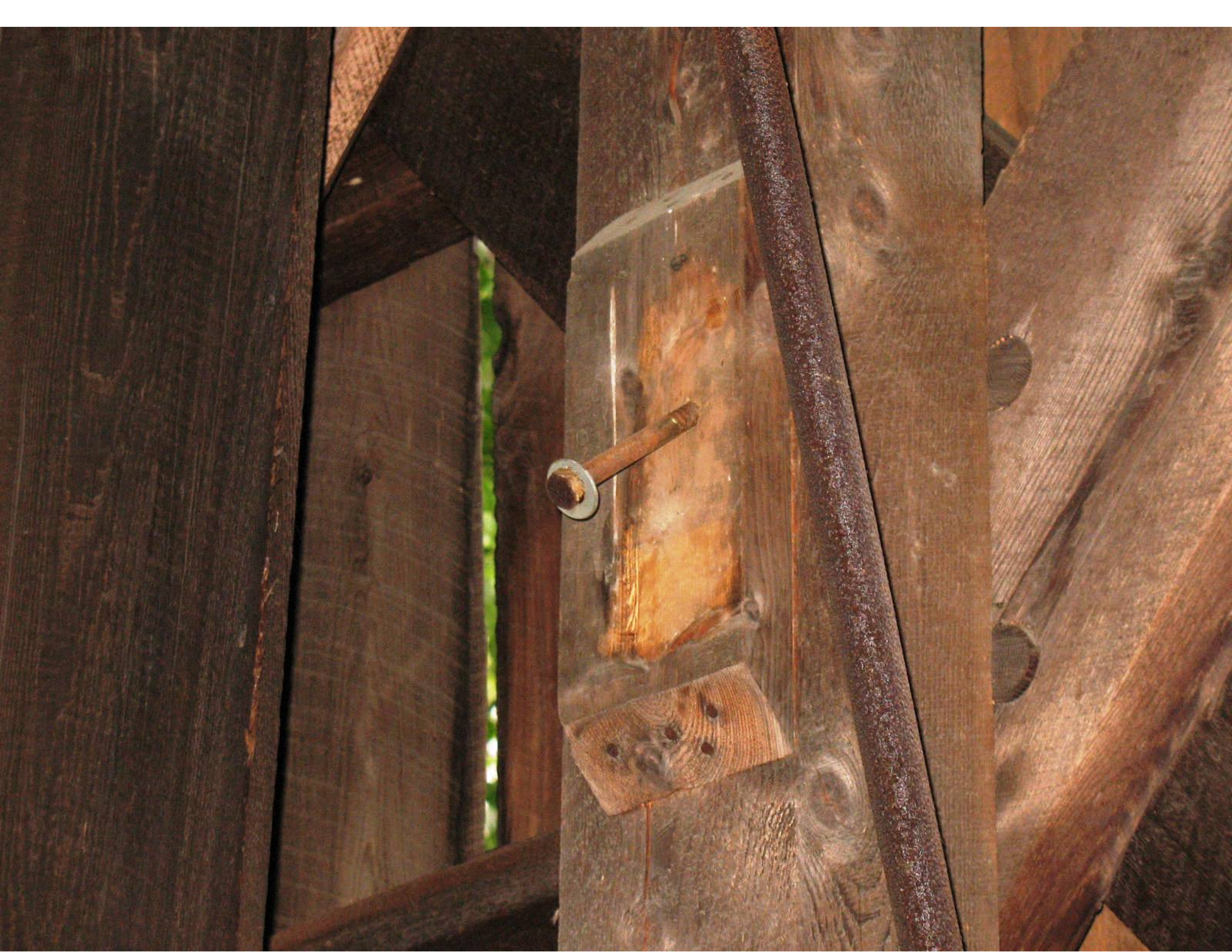


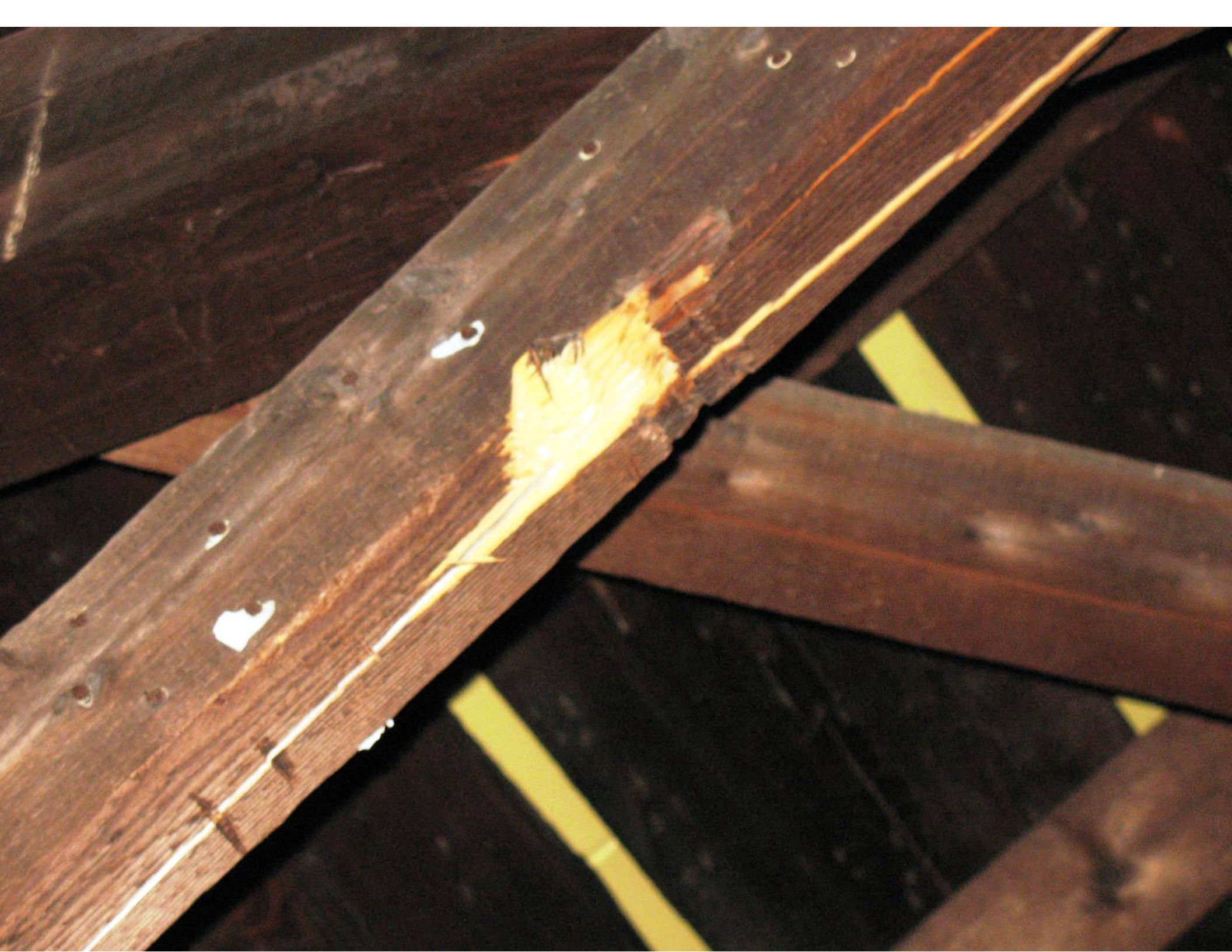


















SPEED LIMIT
HORSES AT A WALK
MOTOR VEHICLES
10 MILES PER HR.

WEIGHT
LIMIT
8
TONS

**WEIGHT
LIMIT
8
TONS**





**ONE
LANE
BRIDGE**

STATE OF OHIO
BRIDGE AT SANDY
COUNTY, OHIO
1850

**IN
AHEAD**





