

LEGAL LOAD  
LIMIT  
6,000  
POUNDS

ROAD  
CONSTRUCTION  
AHEAD

09.13.2005



09.13.2005



09.13.2005



09.13.2005



09.13.2005



09.13.2005



LEGAL LOAD  
LIMIT  
6,000  
POUNDS

09.13.2005



09.13.2005



09.13.2005





09.13.2005



09.13.2005



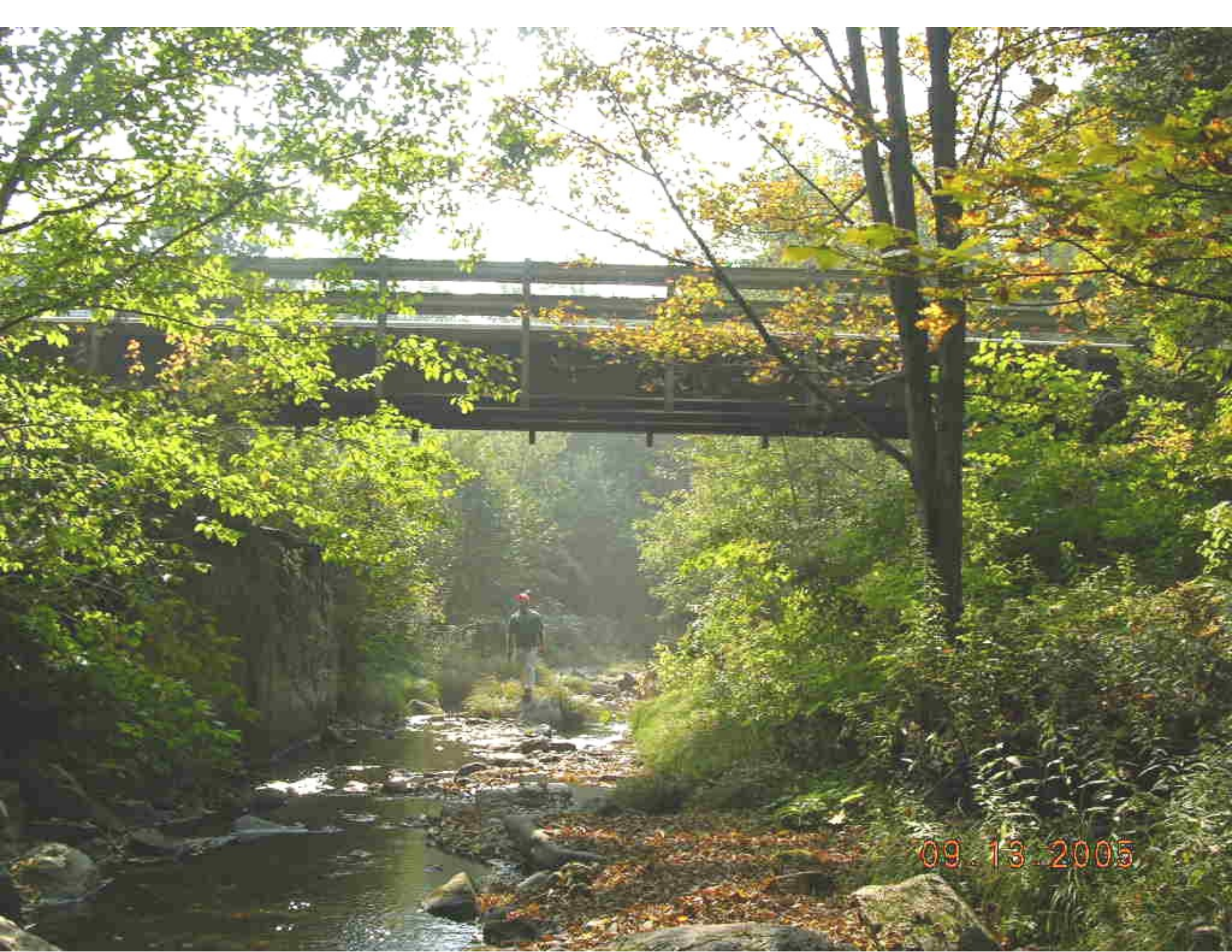
09.13.2005



09.13.2005



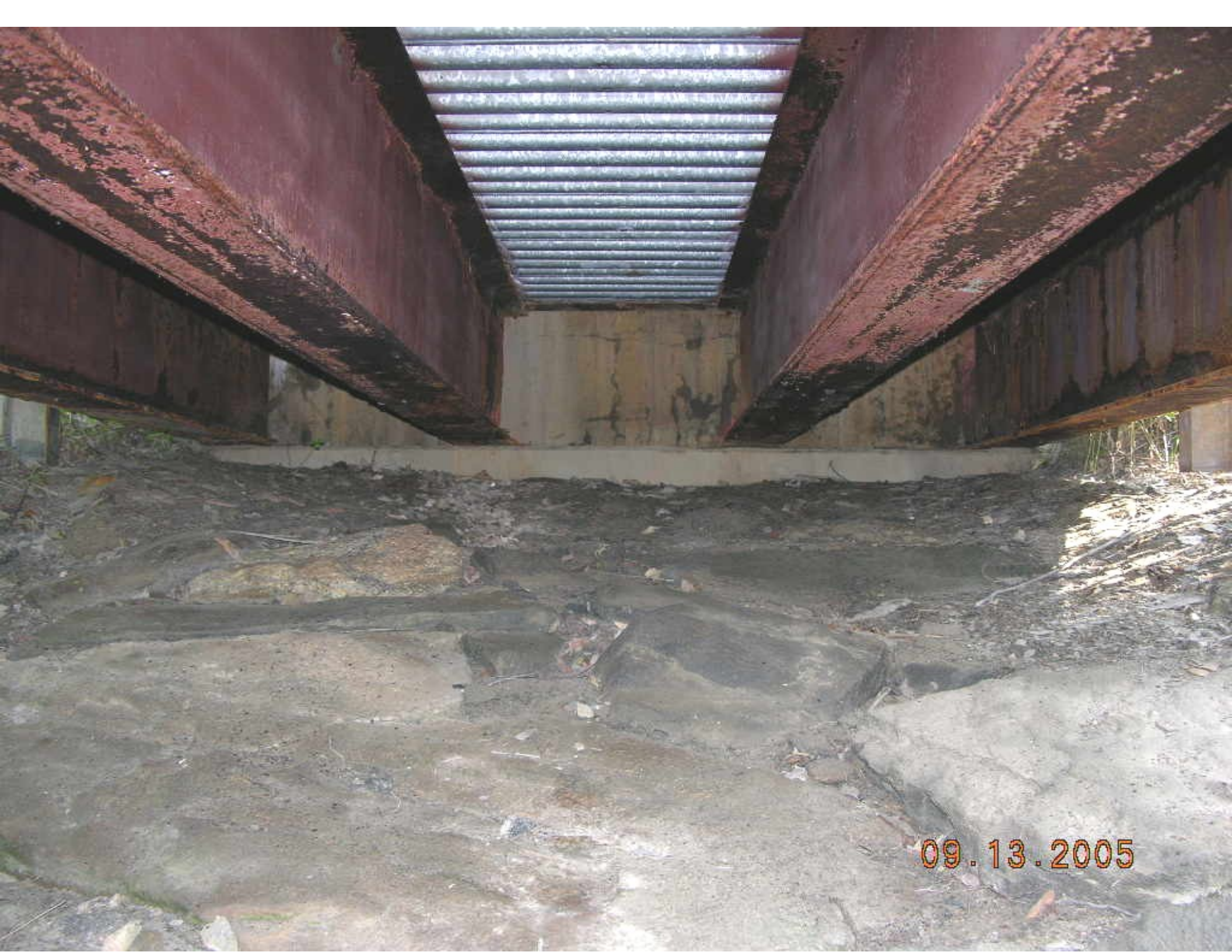
09.13.2005



09.13.2005



09.13.2005



09.13.2005



09.13.2005



09.13.2005



09.13.2005



09.13.2005