



WEIGHT  
LIMIT  
3  
TONS

























































ONE LANE  
BRIDGE

10.07.2005



LEGAL LOAD  
LIMIT  
6000  
POUNDS

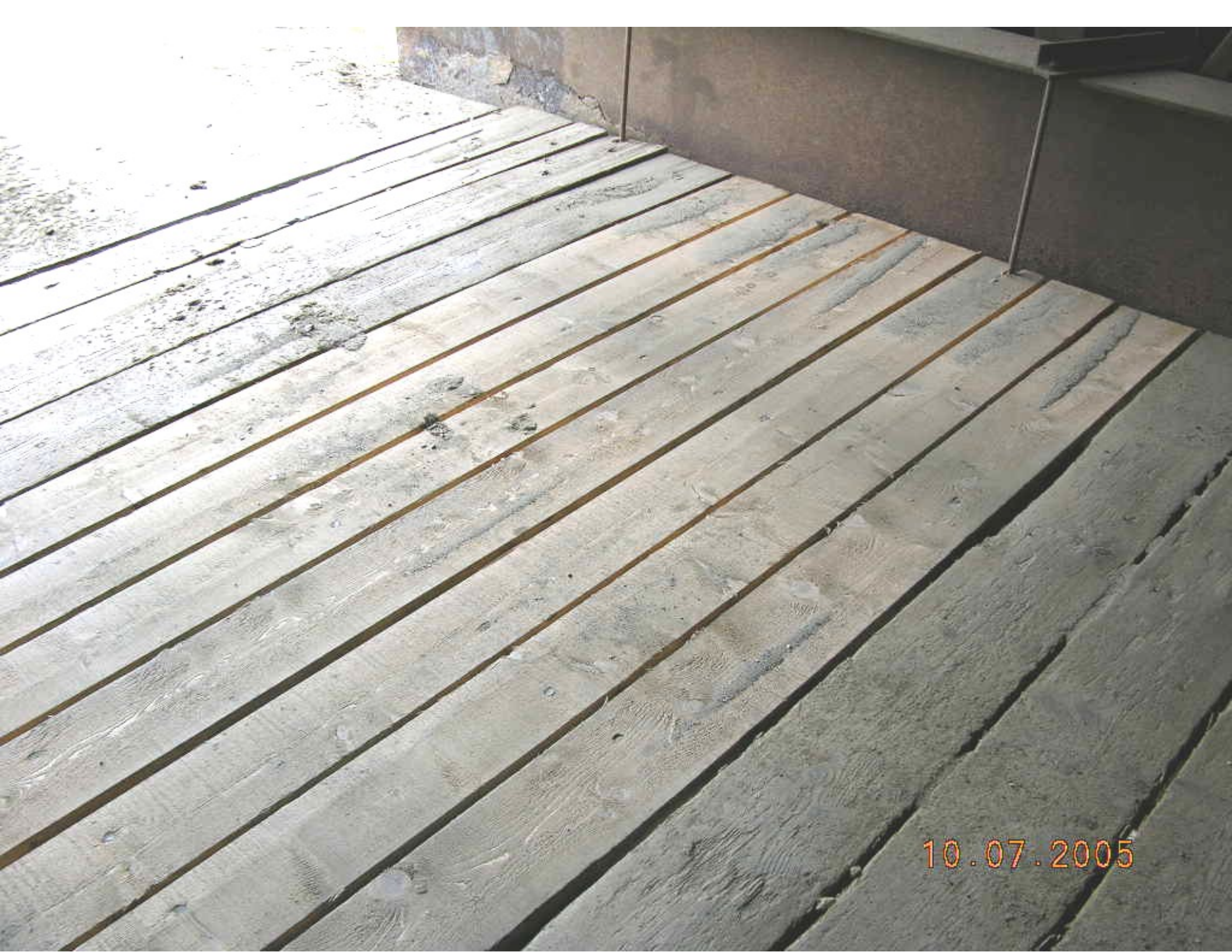
10.07.2005



10-9

WEIGHT  
LIMIT  
3  
TONS

10.07.2005



10.07.2005



10.07.2005



10.07.2005



10.07.2005



10.07.2005