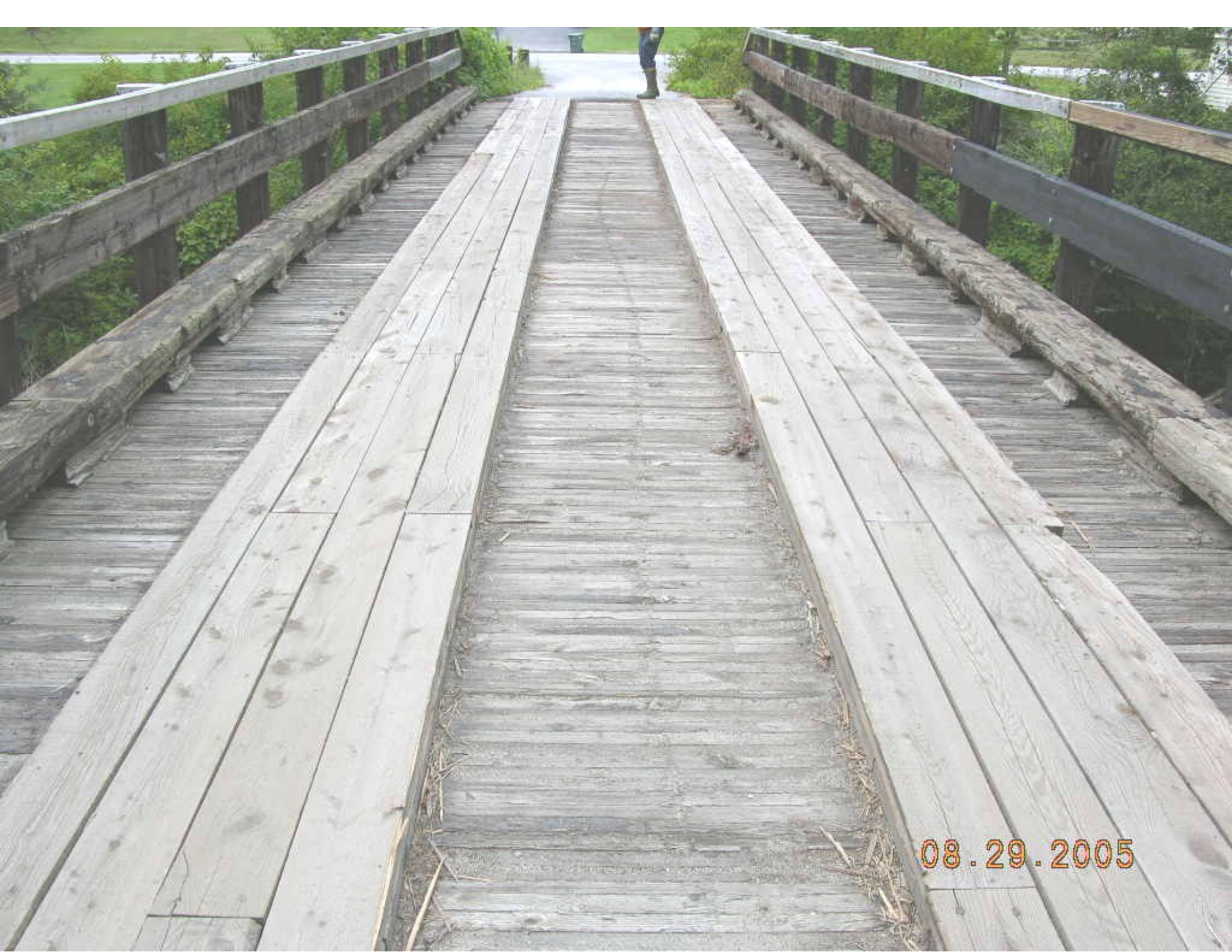




08.29.2005



08.29.2005



08.29.2005



LEGAL LOAD
LIMIT
16,000
POUNDS

DEAD
END

08.29.2005



08.29.2005



08.29.2005



08.29.2005



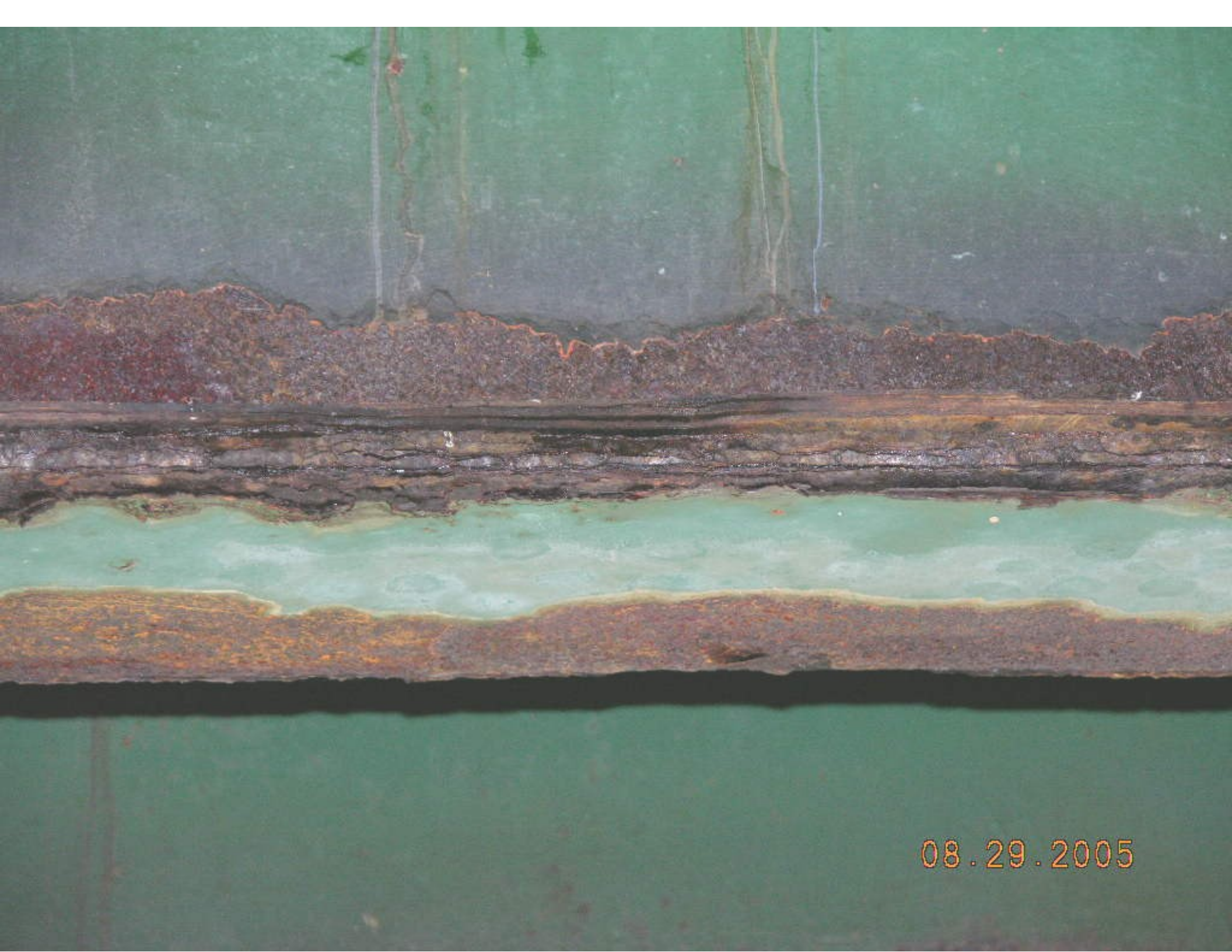
08.29.2005



08.29.2005



08.29.2005



08.29.2005



08.29.2005



08.29.2005



08.29.2005



08.29.2005