









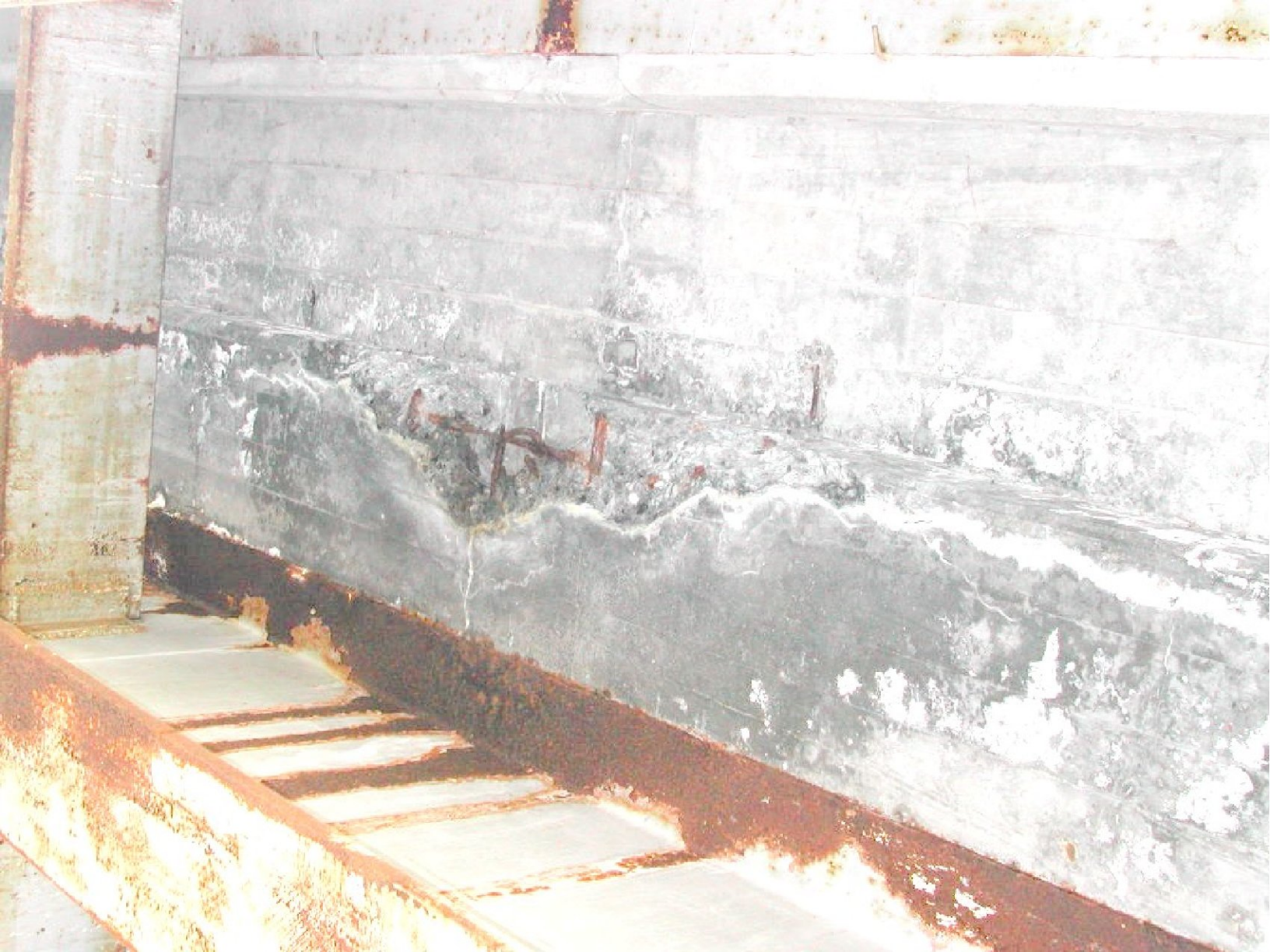




Geo
Join
Site











Two construction workers wearing hard hats and safety vests are standing on the bridge deck, possibly inspecting or working on the structure.

A white car is driving across the bridge, moving from left to right.

A white house with a red roof is visible in the background, partially obscured by trees.

A large, multi-story building with a red facade and a grey roof is visible in the background, likely a residential or commercial structure.