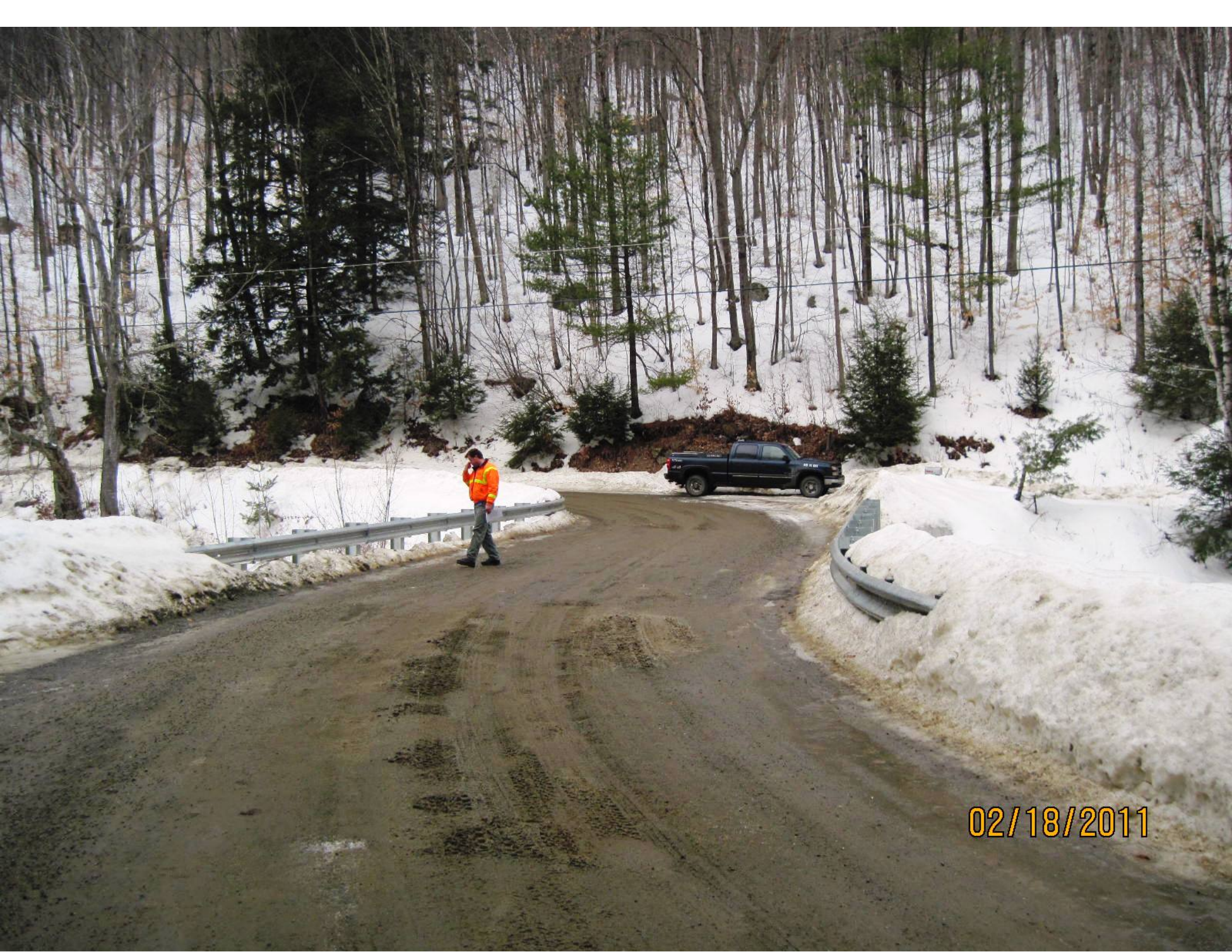




02/18/2011



02/18/2011



02/18/2011

54' 6"

02/18/2011



02/18/2011

W157263
W157174 CAPIT
0001# XX
JSC | Blvd
STEEL
157263

02/18/2011

W157263
W157174 CAPIT
0001# XX
FSC 1 Bld
STEEL EXC
157263 Capital
157263 EXC
157263 CAPITAL

X

02/18/2011

263
174

CAP 17

STEEL
5X33.9
157263 Capital
1052651

X

02/18/2011

30'
RWD
RWD

02/18/2011



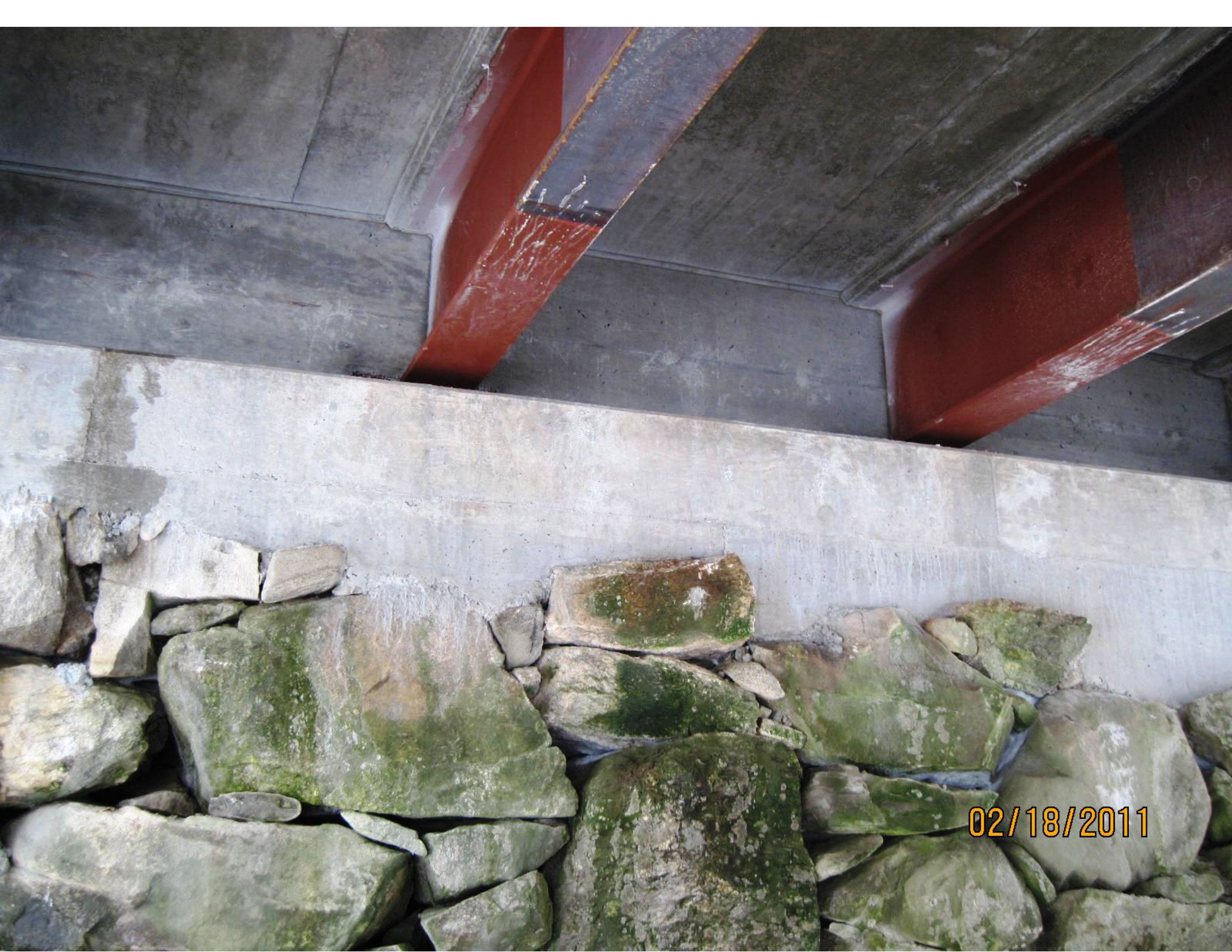
30'
Road
Rest

02/18/2011

02/18/2011



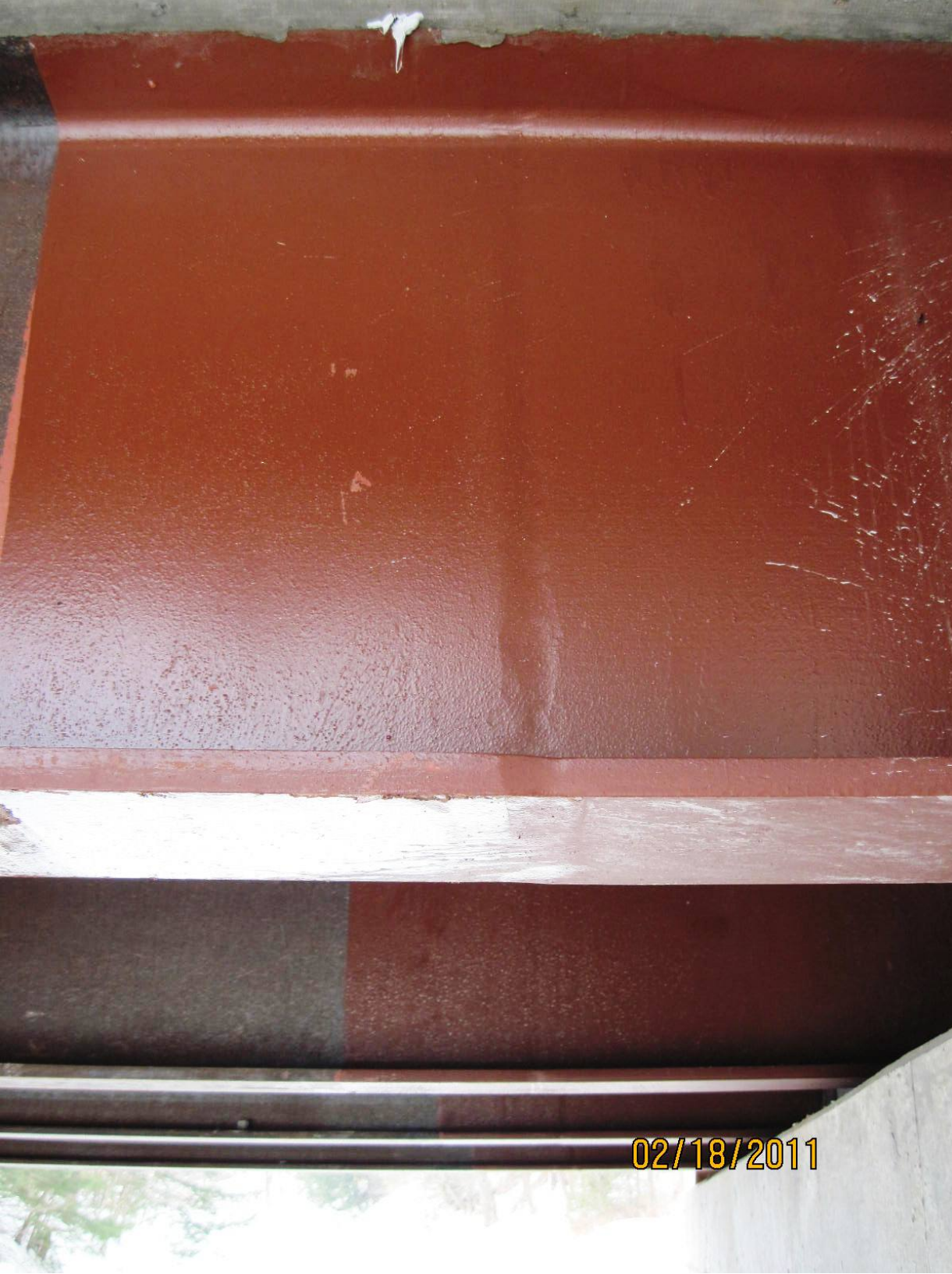
02/18/2011



02/18/2011



02/18/2011



02/18/2011



02/18/2011



02/18/2011



735
7/2/10

02/18/2011



02/18/2011



02/18/2011