



LOAD  
LIMIT  
8  
TONS

20  
CORP  
32









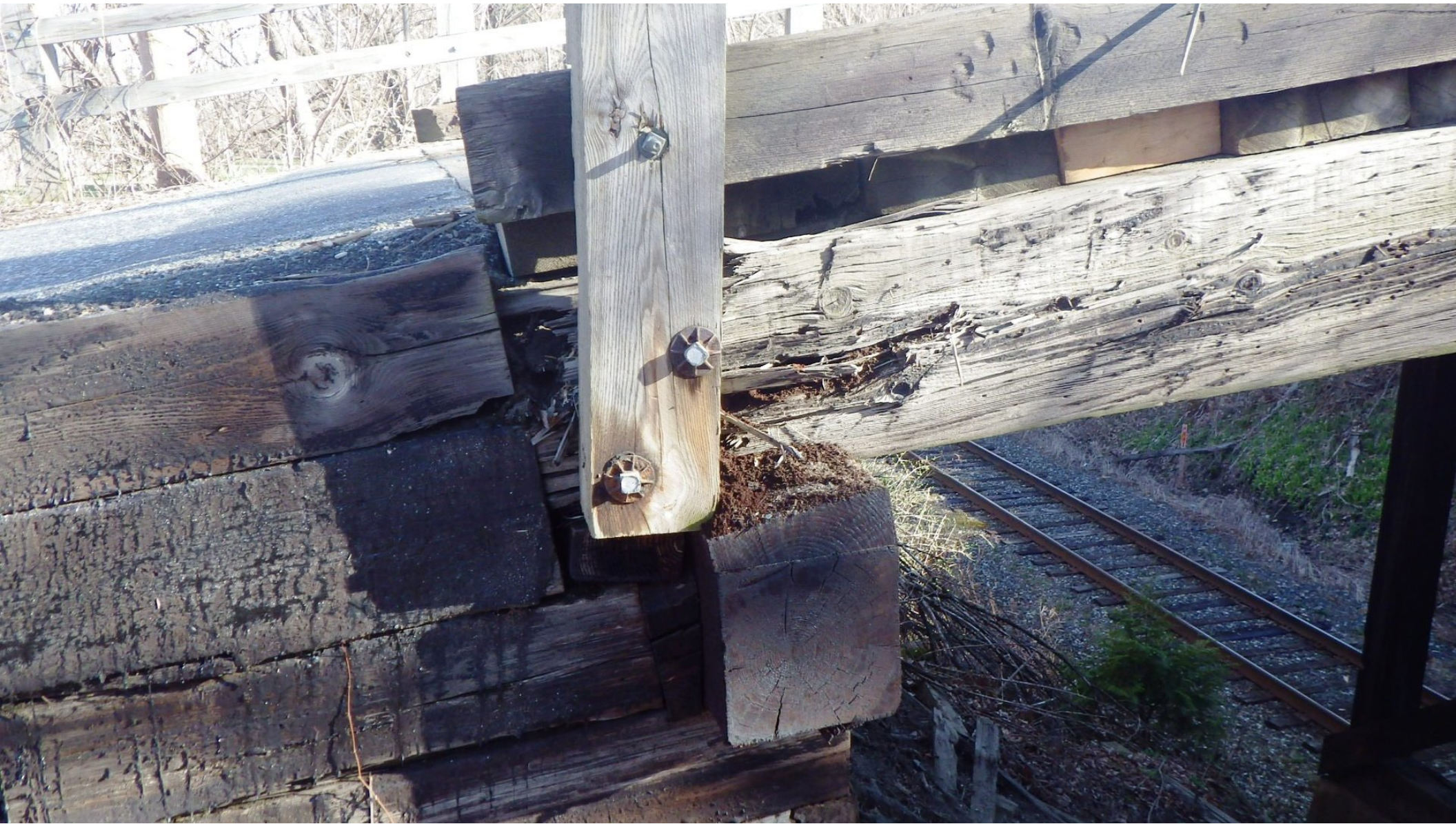
LEGAL  
LOAD  
LIMIT  
8  
TONS

**NOTICE**  
NO VEHICLE HAVING A WEIGHT,  
Including Vehicle and Load, Exceeding  
Two Axle 15,000 lbs. #26  
Three Axle 18,000 lbs.  
Tractor Trailer Unit 20,000 lbs.  
Shall Be Operated On This Road Leading  
From Rt 14 Jericho St.  
To Rt 5 Jericho St.  
In the Town of Wetford Vt.  
Until (Date) MAY 1 2016  
As per Sections 1109-1110 Title 19 Vermont Statutes Annotated  
Date 3-1-16 By Order of the Agency of Transportation  
Post: 3-1-16 Secretary of Transportation



L GAL  
LOAD  
LIMIT  
8  
TONS

**NOTICE**  
NO VEHICLES EXCEEDING A WEIGHT  
OF 10,000 LBS. OR A HEIGHT OF 13.5 FEET  
TO CROSS THIS BRIDGE. EXCEEDING THESE  
LIMITS MAY CAUSE DAMAGE TO THE BRIDGE  
AND BE A VIOLATION OF STATE LAWS.  
THE STATE OF MICHIGAN DEPARTMENT OF  
TRANSPORTATION



























5-11

16"

MAY  
DITCH

30'

REGULATE

11

