



07 / 19 / 2016



07 / 19 / 2016





07/19/2016



07 / 19 / 2016



07 / 19 / 2016



07 / 19 / 2016



07/19/2016



07 / 19 / 2016



07/19/2016



07/19/2016



07/19/2016



07 / 19 / 2016



07 / 19 / 2016



LEGAL LOAD  
LIMIT  
24,000  
POUNDS

NARROW  
BRIDGE



07 / 19 / 2016



07/19/2016

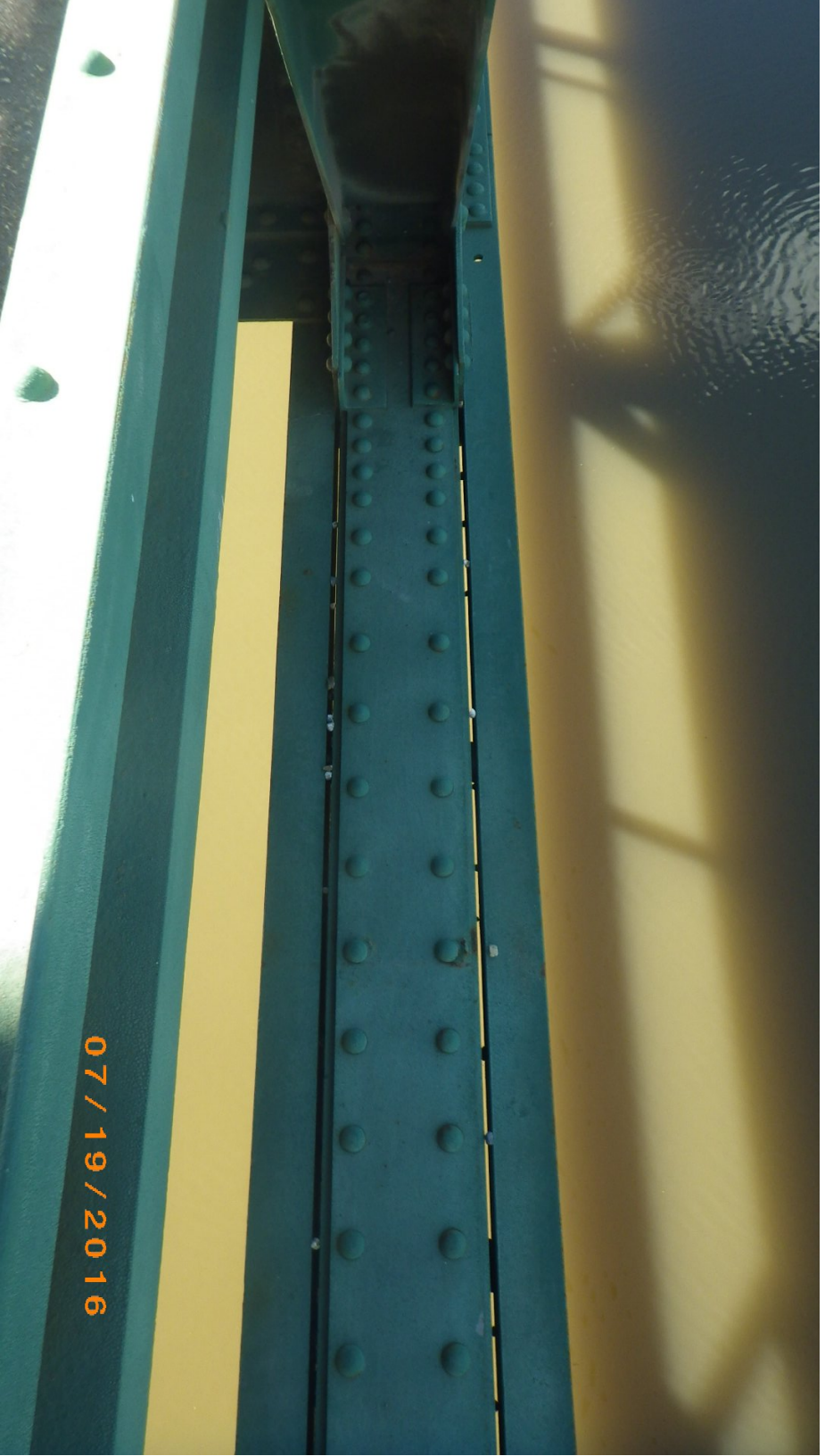


07/19/2016

07/19/2016



07/19/2016



07 / 19 / 20 16



07/19/2016



07/19/2016



07/19/2016