

BRIDGE AHEAD
LEGAL LOAD
LIMIT
10000
POUNDS

NO
TRUCKS
ALLOWED

10.26.2005



10.26.2005



BUXCAR

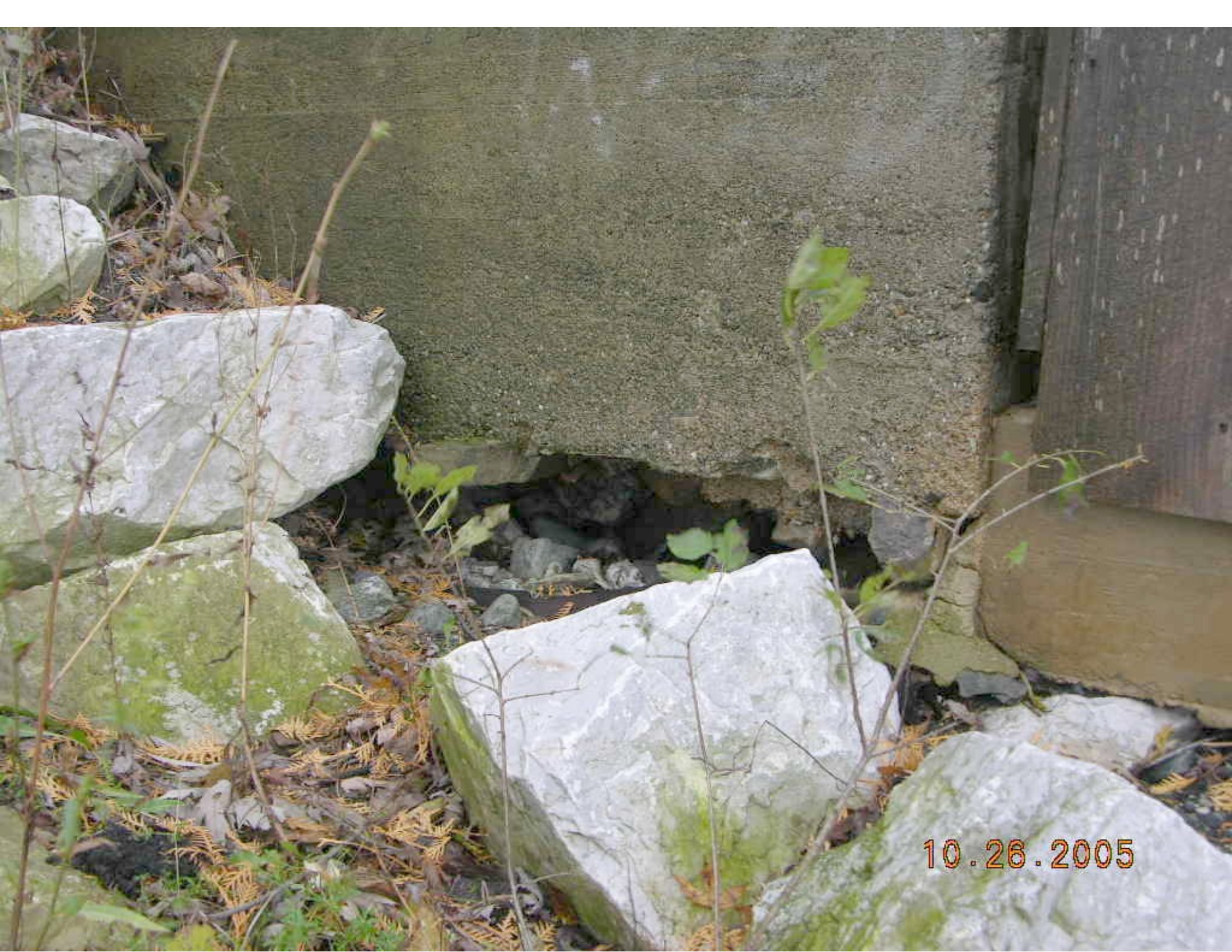
10.26.2005



10.26.2005



10.26.2005



10.26.2005



10.26.2005



10.26.2005



10.26.2005



10.26.2005



10.26.2005

**LEGAL
LOAD LIMIT
10,000
POUNDS**

10.26.2005



LEGAL
LOAD LIMIT
10000
POUNDS

10.26.2005



LEGAL
LOAD LIMIT
10000
POUNDS



10.26.2005



10.26.2005



10.26.2005



10.26.2005



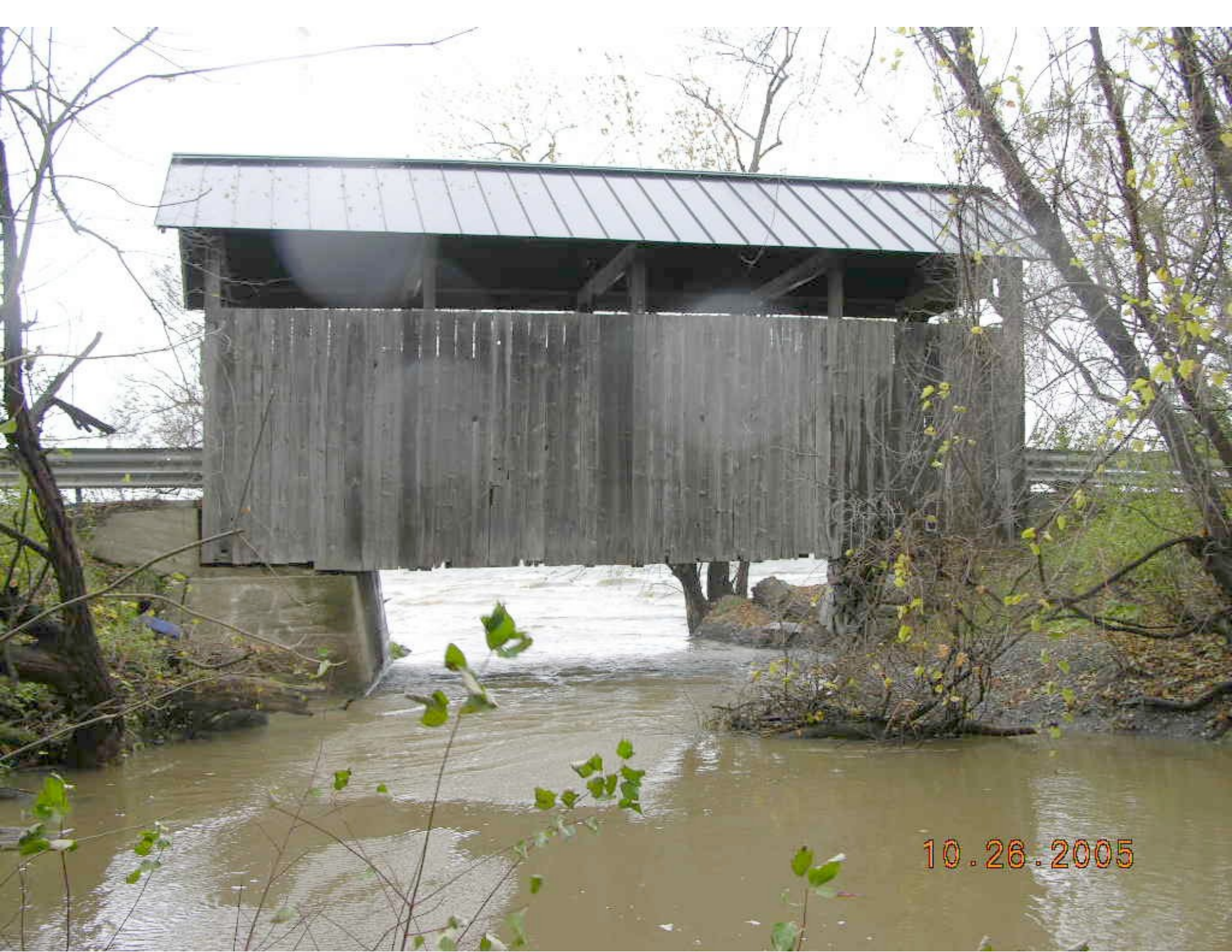
BOKEADZ

18



Must come this

10.26.2005



10.26.2005

BRIDGE AHEAD
LEGAL LOAD
LIMIT
10000
POUNDS

10.26.2005

A photograph of a rural landscape. In the foreground, a dark asphalt road curves from the bottom left towards the center. To the right of the road is a grassy area with some tall grasses and a small, thin tree. A white rectangular sign with black text is mounted on a metal post in the grass. The sign reads: "BRIDGE AHEAD", "LEGAL LOAD", "LIMIT", "10000", "POUNDS". In the background, there are several trees with green and yellow leaves, suggesting autumn. A utility pole is visible among the trees. On the right side, a red barn with a grey roof is partially visible. The sky is overcast and grey. A date stamp "10.26.2005" is in the bottom right corner.

BRIDGE AHEAD
LEGAL LOAD
LIMIT
10000
POUNDS

10.26.2005