



09/13/2017



09/13/2017



09/13/2017



09/13/2017



STOP

LEGAL LOAD
LIMIT
24000
POUNDS

09/13/2017



09/13/2017



09/13/2017



09/13/2017



09/13/2017



09/13/2017



09/13/2017



09/13/2017



09/13/2017



09/13/2017



09/13/2017



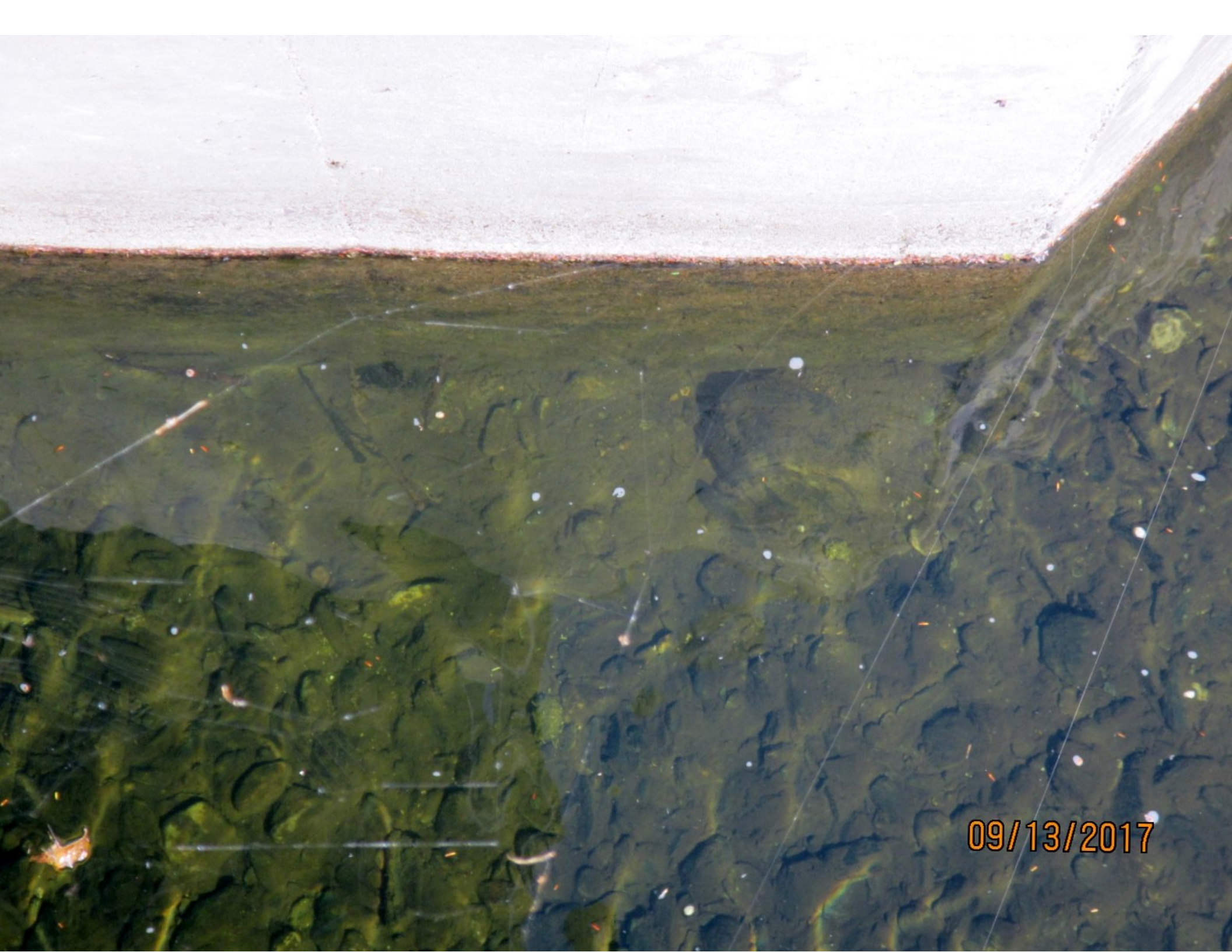
09/13/2017



09/13/2017



09/13/2017



09/13/2017