



7852

CLEARANCE
10' 6"

LEGAL LOAD
LIMIT
16,000
POUNDS

SPEED
LIMIT
25

1852

CLEARANCE
10' 6"

LEGAL LOAD
LIMIT
16,000
POUNDS

SPEED
LIMIT
25

1852

CLEARANCE

10' 6"







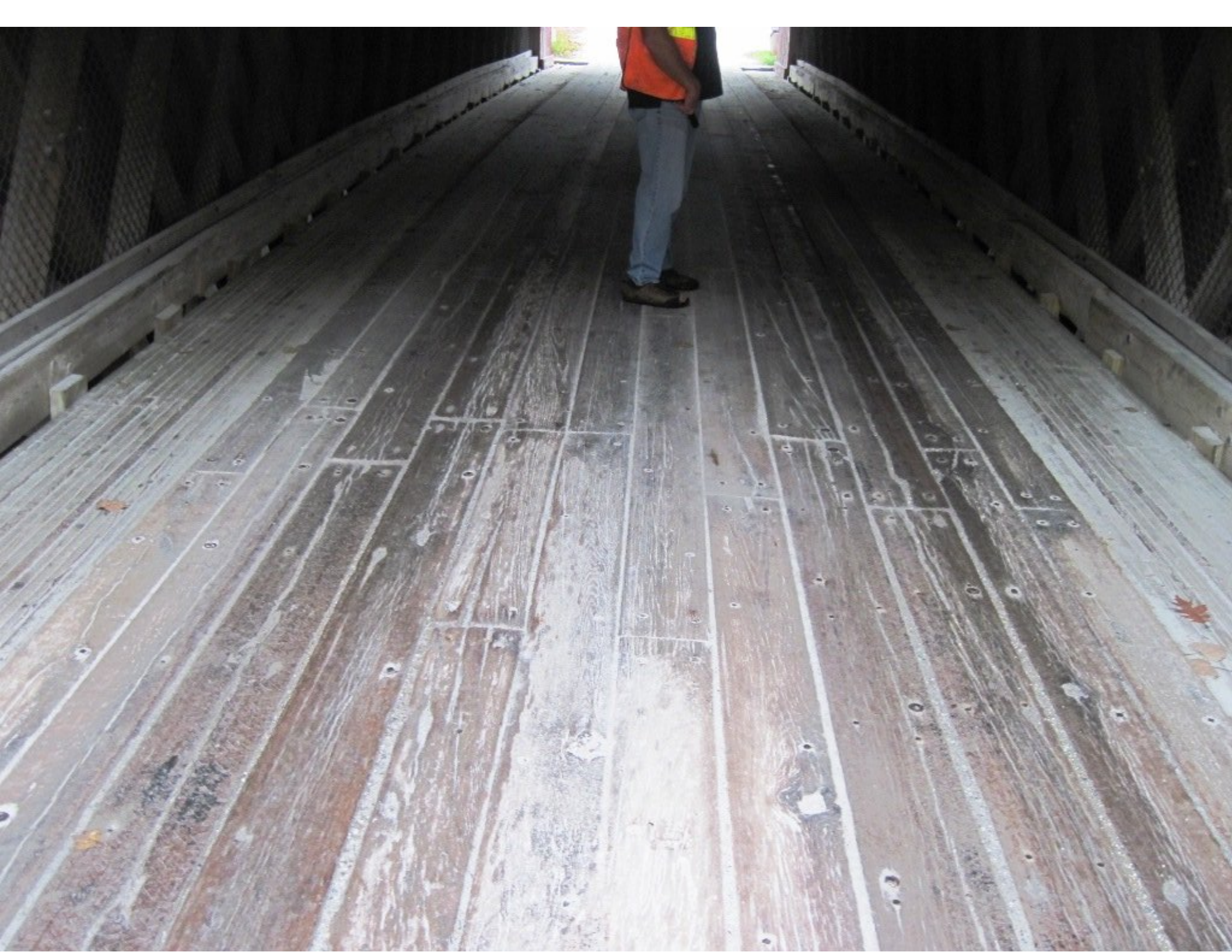






STOP

C





**BRIDGE
WEIGHT
LIMIT
16000
POUNDS**

852

**CLEARANCE
10' 6"**





CLEARANCE
10' 8"

BRIDGE
WEIGHT
LIMIT
16000
POUNDS

852

CLEARANCE

10' 6"















CLEARANCE
10' 6"



LETTERS FOR BIDDEN
PART. PROSECUTION
& PROTECTION
ELECTAEM







