



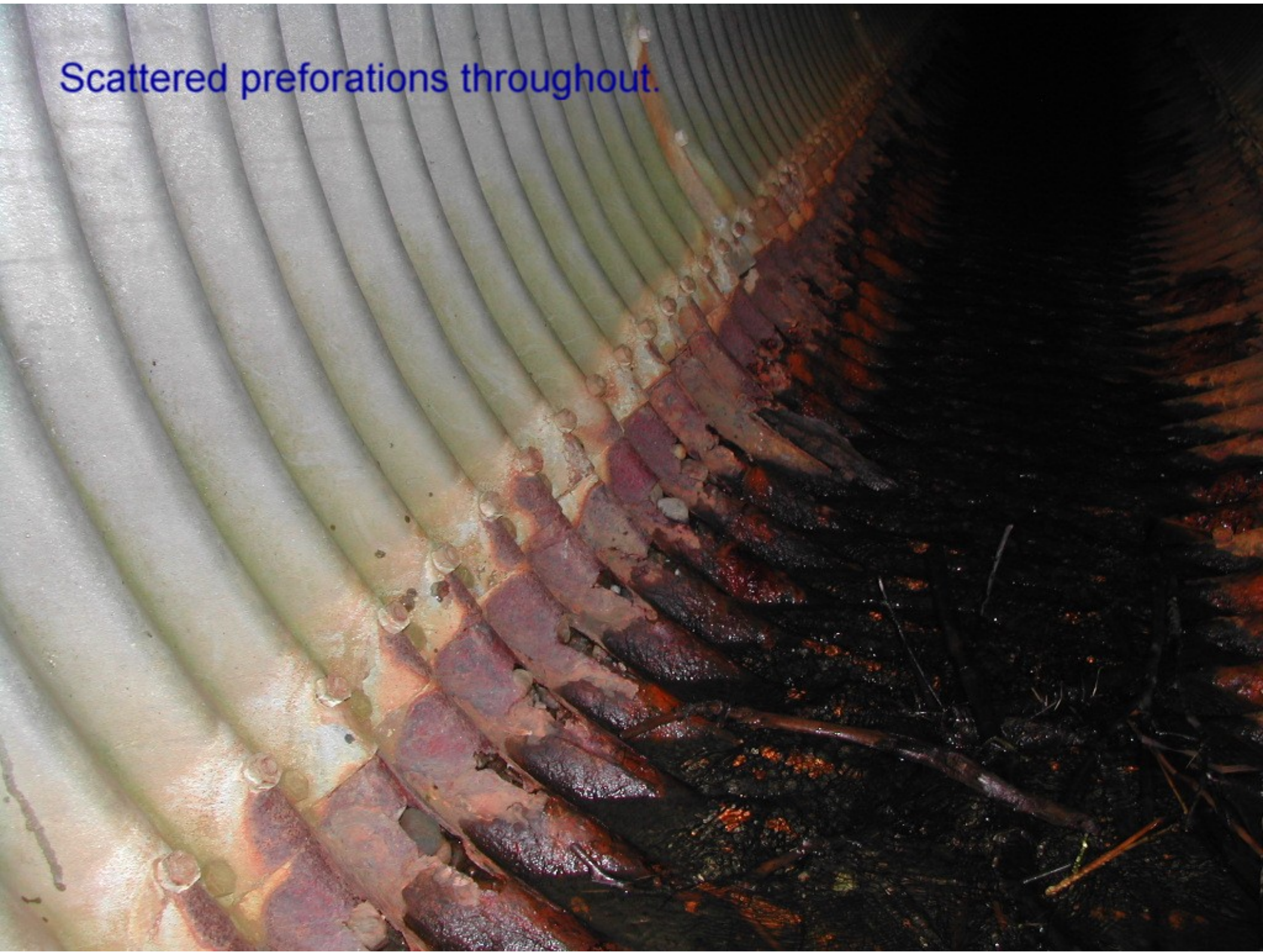


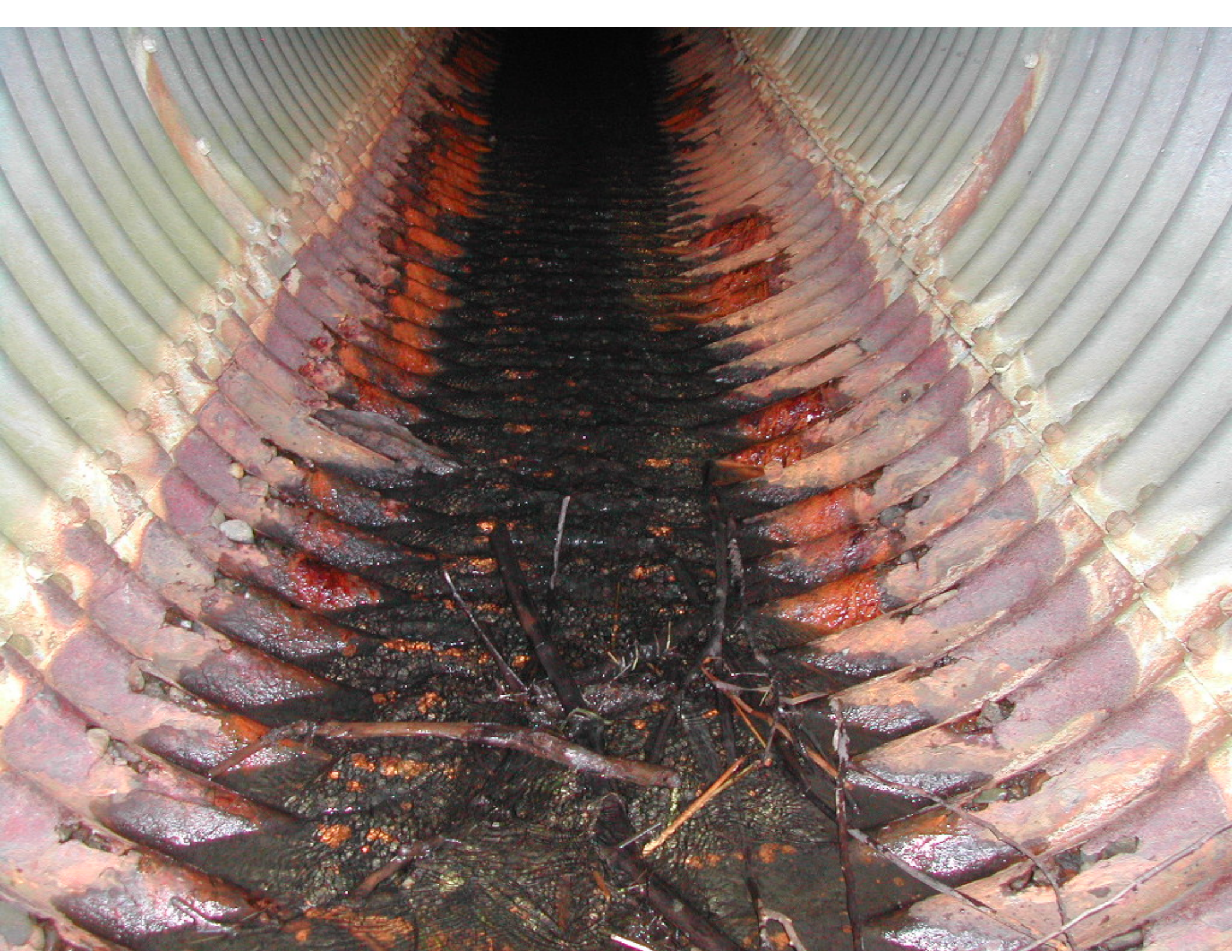


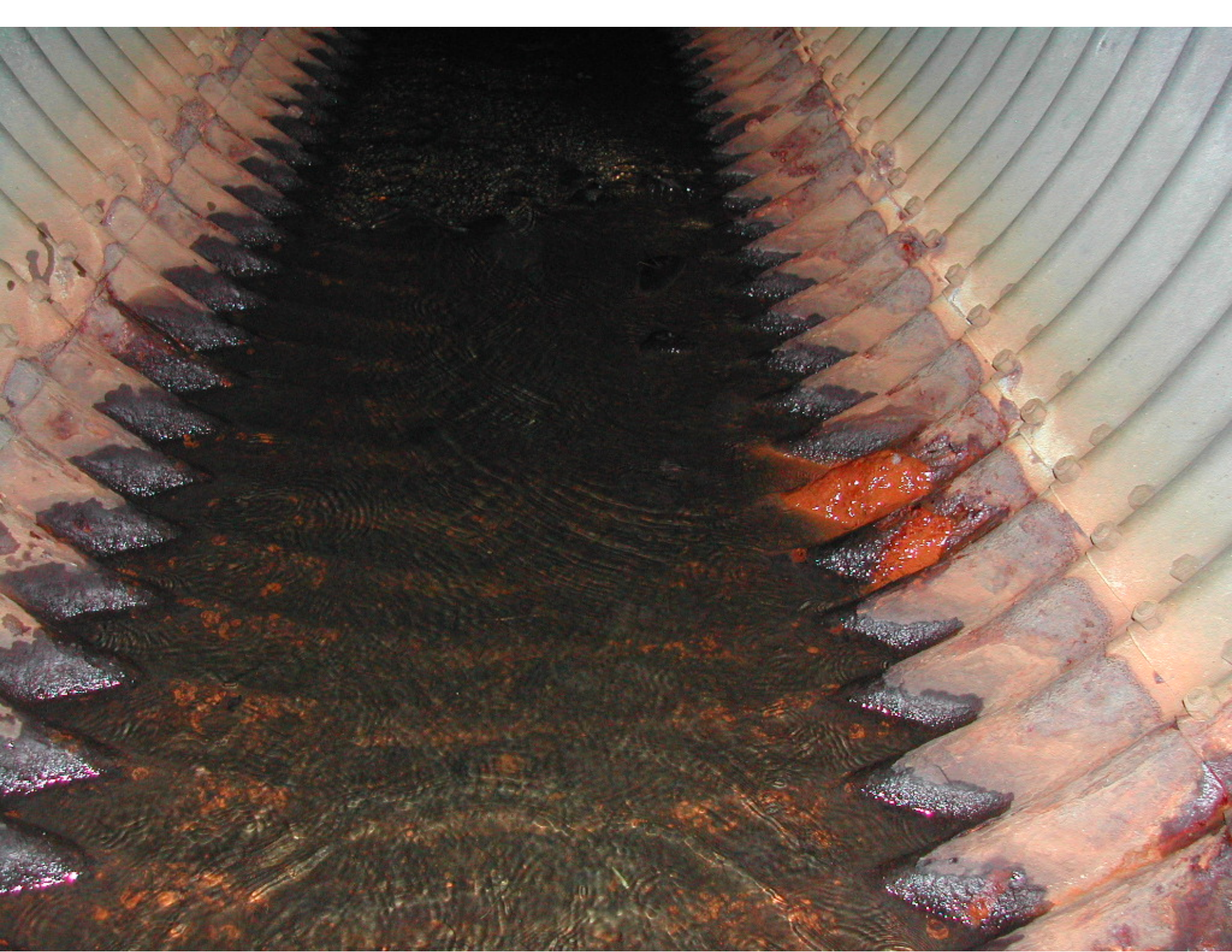
Beaver dam needs to be removed.



Scattered perforations throughout.



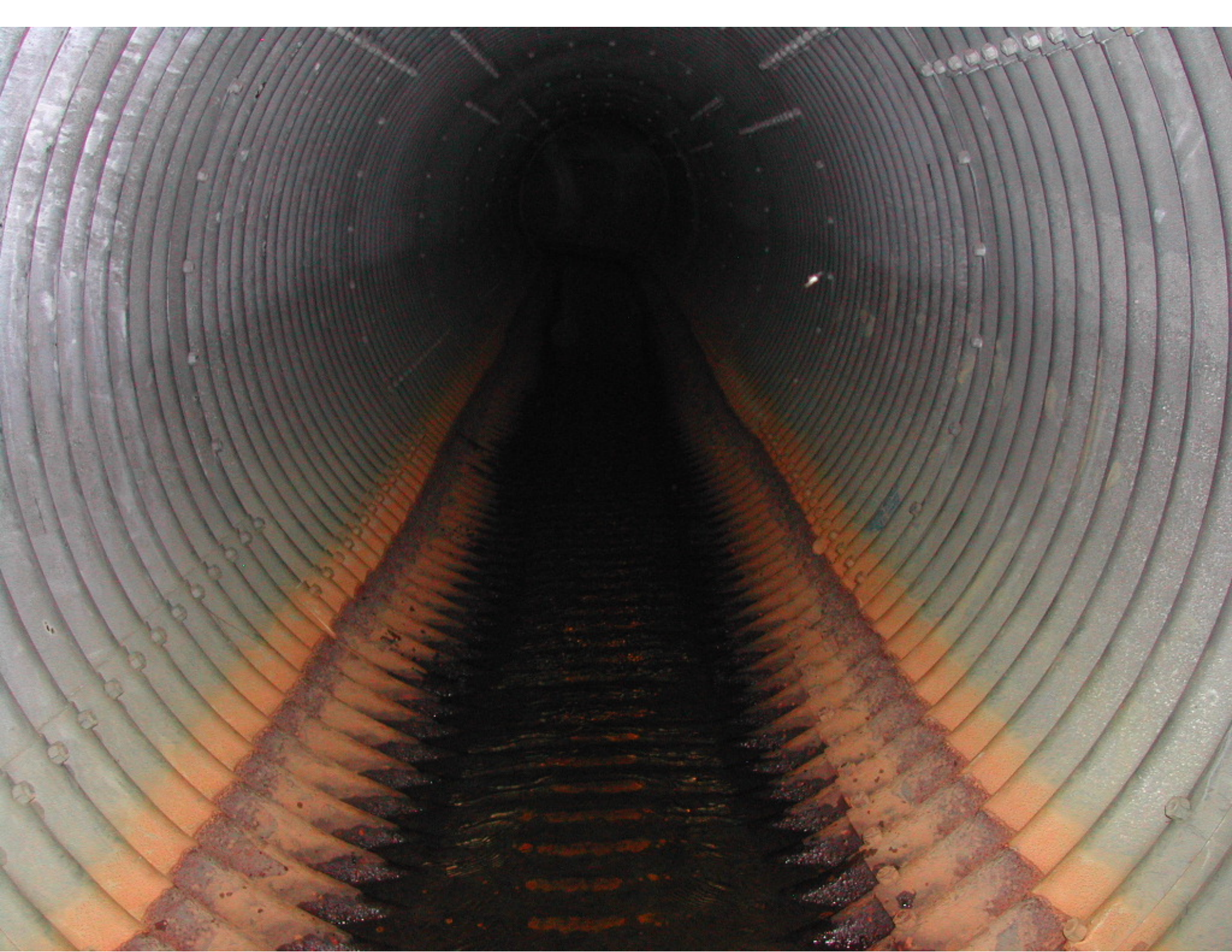






















PROHIBITED:
TRUCKS
TRAILERS
BUSES
CAMPERS
RECREATIONAL VEHICLES
OVER 10 FEET HIGH
OVER 10 FEET WIDE
OVER 10 FEET LONG
OVER 10 FEET WEIGHT

TURN SIGNAL
REQUIRED
BEFORE
CHANGING
LANES





